

Hawaii Coral Reef Initiative Research Program

Dr. Michael P. Hamnett, PI

Mission

Support monitoring and research to build capacity in managing Hawaii's coral reef ecosystems.



**How to
accomplish
the
program's
mission?**





1. Administer projects selected through an open, competitive, internationally peer reviewed process with an annual Request For Proposals.



2. Hold quarterly meetings to allow resource managers and scientists to review results of on-going and recently completed research and monitoring projects.

3. Produce technical documents and video.



4. Participate in public outreach and education activities



5. Develop a program website

HCRI-RP - Microsoft Internet Explorer

File Edit View Favorites Tools Help

Back Forward Stop Refresh Home Search Favorites Media Print Mail

Address <http://www.hawaii.edu/ssri/webdev/gen09/rbi/maui/index.htm> Go Links

About HCRI-RP Call to Action Economic Value Assessment & Monitoring Threats Results by Island Reports & Publications Media Center



Home: [Results by Island](#): Maui

Results of Maui:

- [Ahihi Tidepool](#)
- [Ahihi-Kina'u National Area Reserve](#)
- [Hana Bay](#)
- [Honokowai](#)
- [Honolua Bay](#)
- [Ho'okipa Beach Park](#)
- [Ka'anapali](#)
- [Kahekili](#)
- [Kahului Bay](#)
- [Kamaole Beach Co. Park](#)
- [Kahana Bay and Point](#)
- [Ka'ono'ulu Beach County Park](#)
- [Ke'anae Point](#)
- [Kihei \(Beach Park\)](#)
- [Kihei \(Residential\)](#)
- [La Perouse Bay](#)
- [Lahaina](#)
- [Ma'alaea Bay](#)
- [Molokini Island](#)
- [Olowalu](#)
- [Papa'ula Point](#)
- [Puamana Beach Park](#)
- [Wai'anapanapa State Park](#)
- [Wailea](#)

Ahihi Tidepool



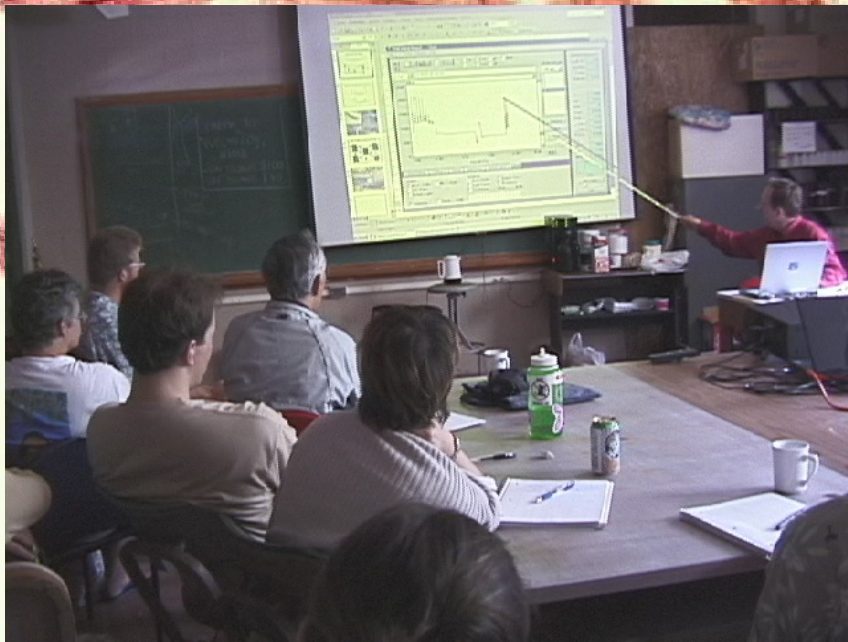
Legend:

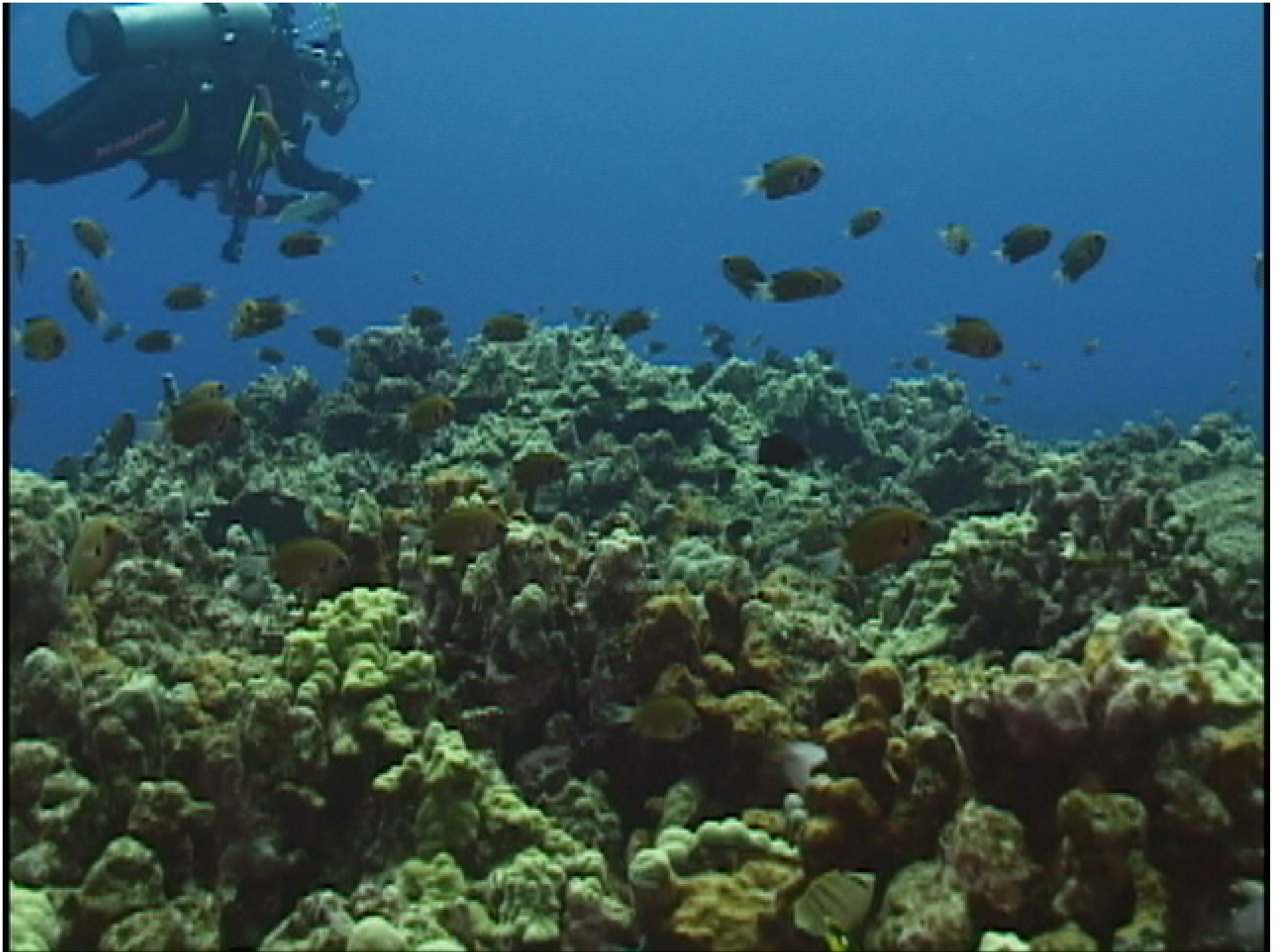
- Fish Research and Monitoring Sites
- Algae Research and Monitoring Sites
- Coral Research and Monitoring Sites

University of Hawaii at Manoa, Social Science Research Institute, 2424 Maile Way, #704, Honolulu, Hawaii 96822
Phone: (808) 956-7479, Fax: 956-2884, hcri_rp@hawaii.edu

Copyright © HCRI-RP. All rights reserved.

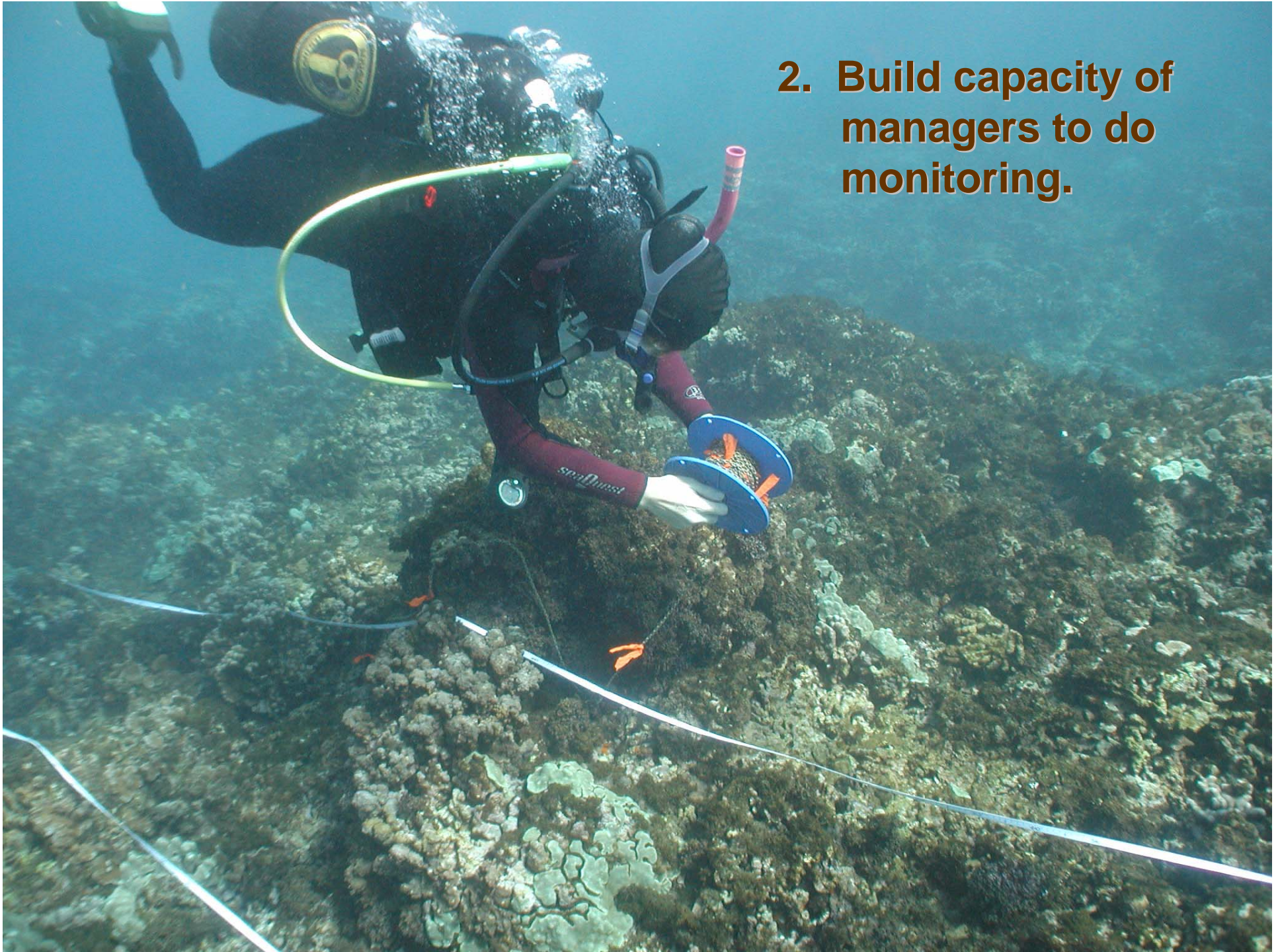
4. Sponsor technical workshops with resource managers and scientists.







1. Facilitate closer collaboration between scientists and resource managers.



2. Build capacity of managers to do monitoring.



3. Collaborate with DOH to monitor land-sea interaction and impacts on reefs.



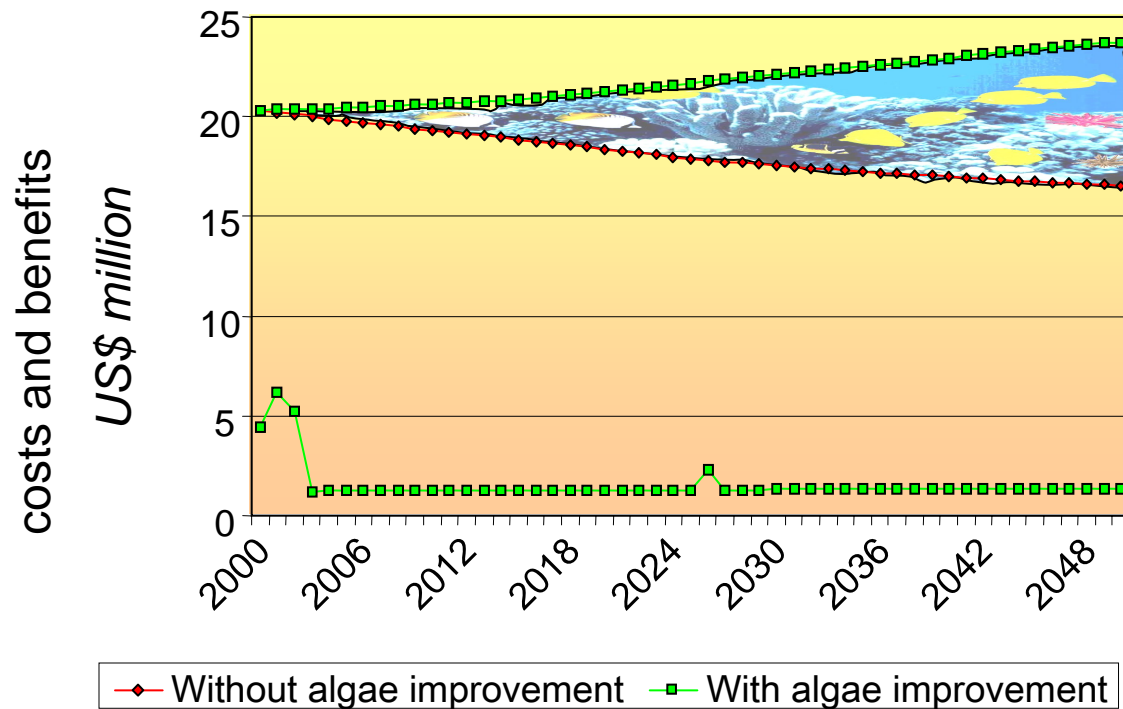
- 4. Begin to understand reproduction and recruitment for keystone species for use in developing an effective system of MPAs.**



5. Identify the physical, chemical, and biological mechanisms that result in algal blooms, coral bleaching, and disease.

6. Evaluate the costs and benefits of management measures to protect the health of reef ecosystems.

Improvement of algae situation at Kihei, Maui





7. Identify ways to finance resource management.



8. Increase public, political, and financial support for resource management through education and awareness.



**For more information, please contact
HCRI-RP at (808/956-7479). Or visit our
website: www.hawaii.edu/ssri/hcri.**