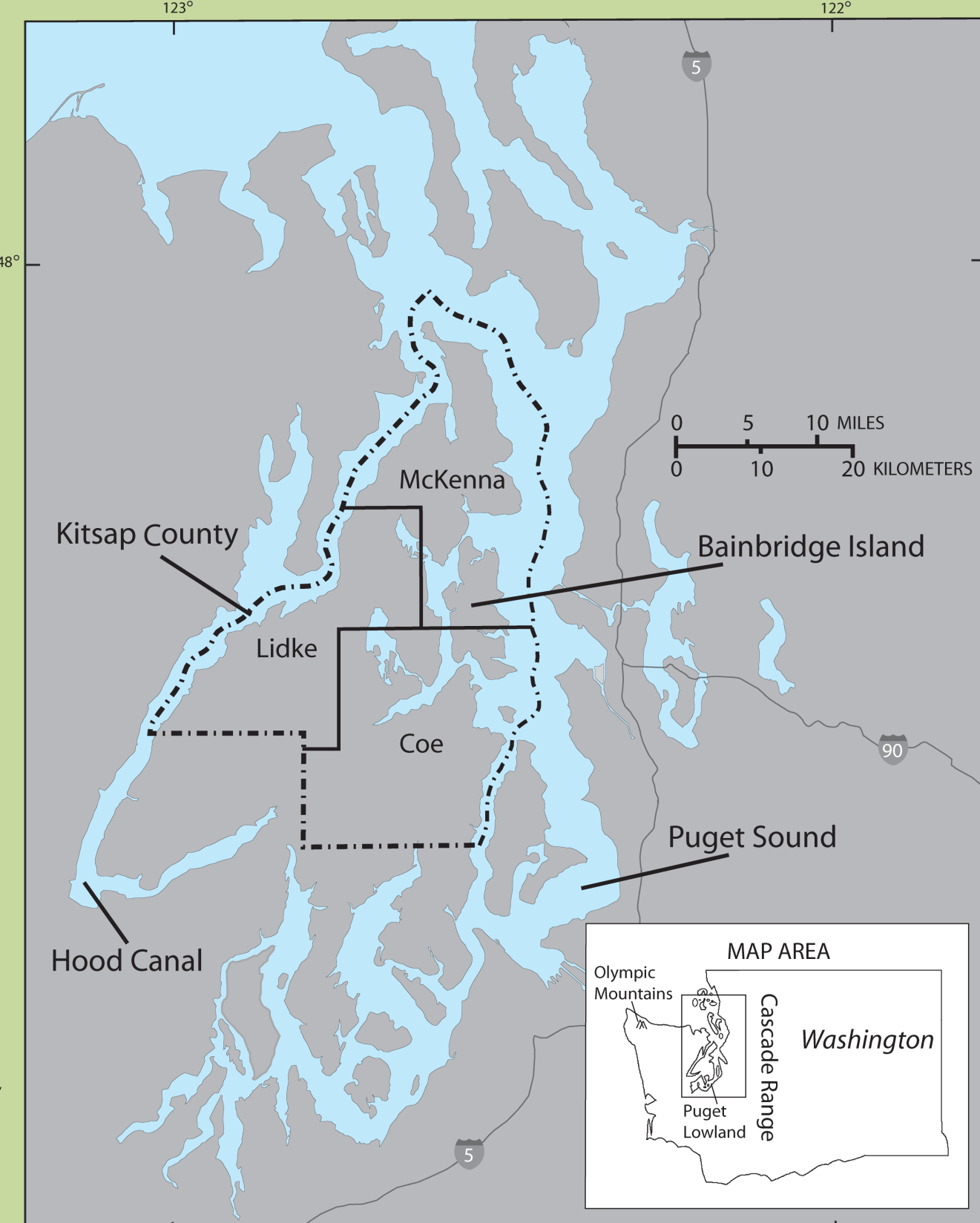
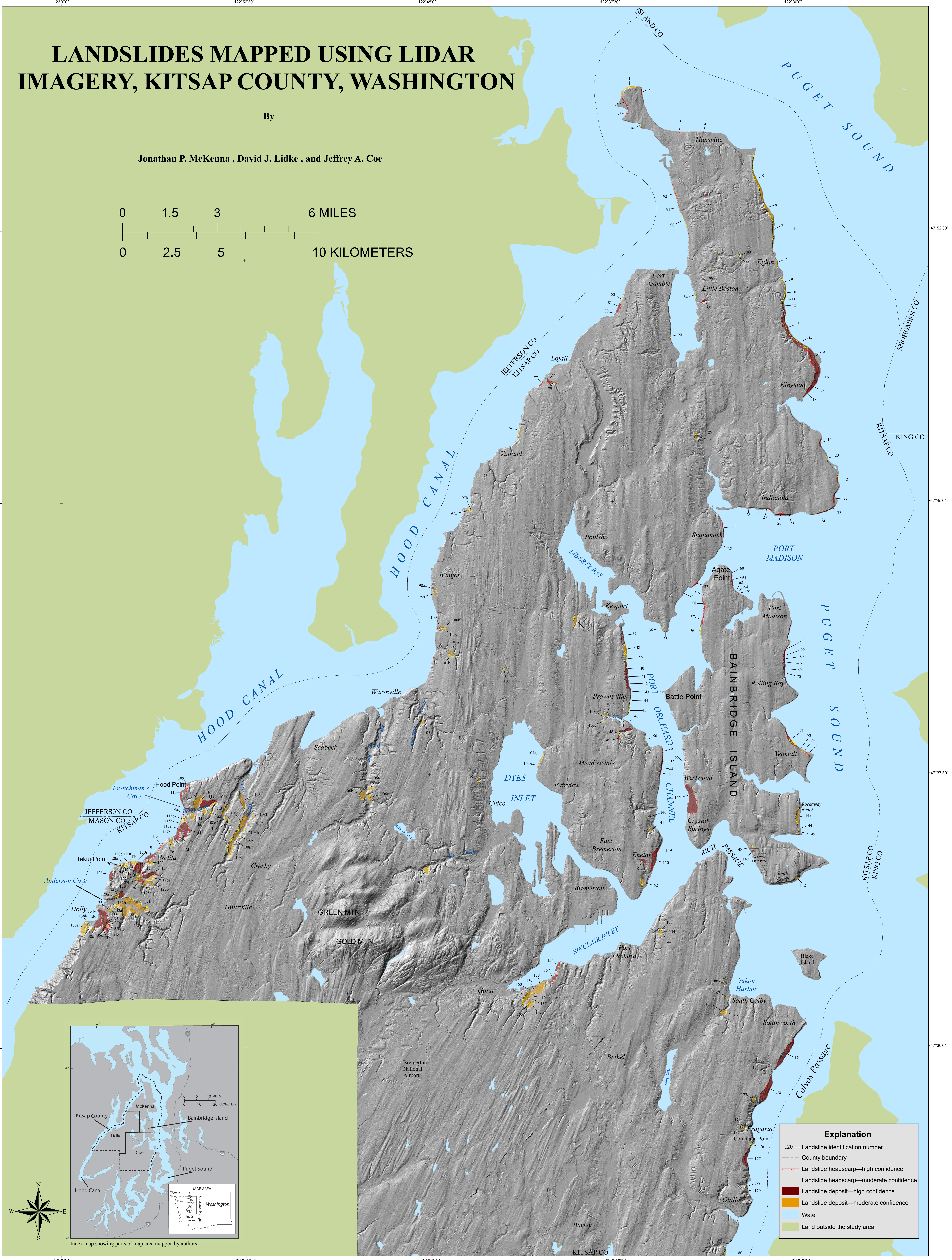
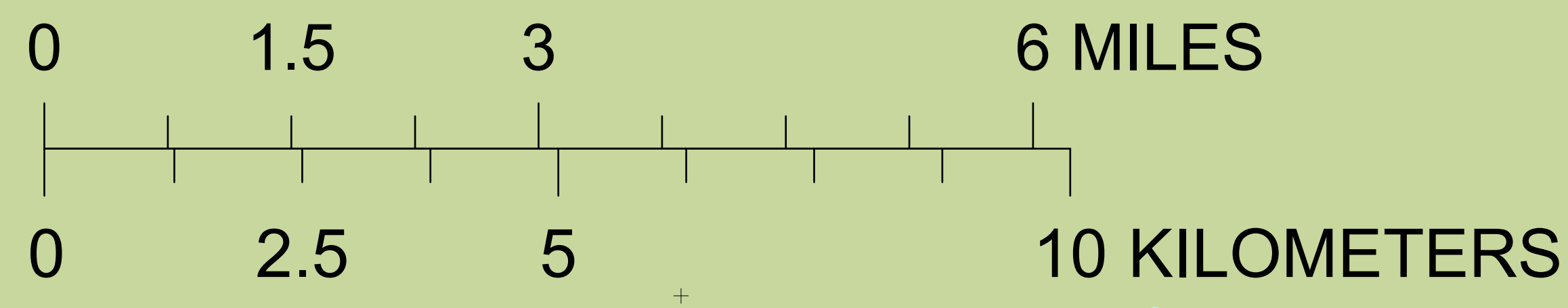


LANDSLIDES MAPPED USING LIDAR IMAGERY, KITSAP COUNTY, WASHINGTON

By

Jonathan P. McKenna, David J. Lidke, and Jeffrey A. Coe



Explanation	
120 —	Landslide identification number
—	County boundary
—	Landslide headscarp—high confidence
—	Landslide headscarp—moderate confidence
—	Landslide deposit—high confidence
—	Landslide deposit—moderate confidence
—	Water
—	Land outside the study area

Base map is a shaded relief calculated from LIDAR-derived, 2-m digital elevation model (<http://pugetsound.usgs.gov>) (1999). Virtual sun is 45° above the horizon and at an azimuth of 315°.

Any use of trade, product, or firm names is for descriptive purposes only and does not imply endorsement by the U.S. Government. Although this report is in the public domain, permission must be secured from the individual copyright owner to reproduce any copyrighted material contained within this report. For sale by U.S. Geological Survey Information Services, Box 25286, Federal Center, Denver, CO 80225. This report is available at: <http://pubs.usgs.gov/of/2008/1292>