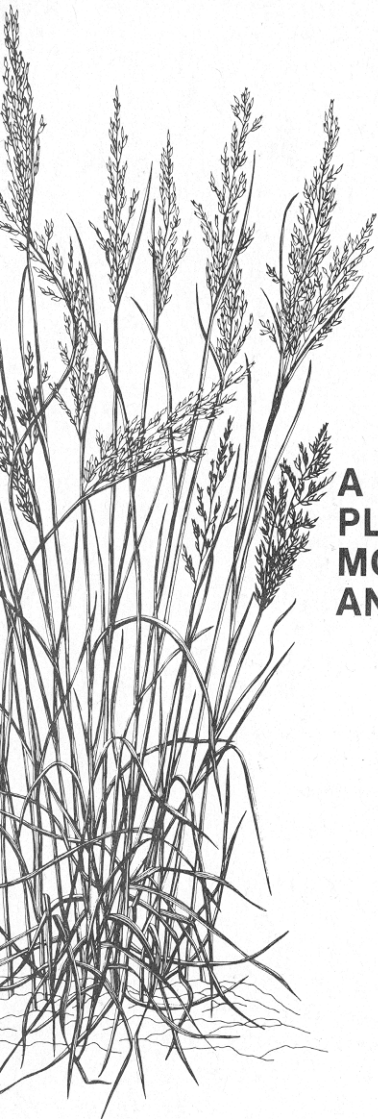


# **GOSHEN PRAIRIE SANDREED**



**A CONSERVATION  
PLANT FOR  
MONTANA  
AND WYOMING**



**U.S.D.A.  
Soil  
Conservation  
Service**

**Plant  
Materials  
Center**

**Bridger,  
Montana**

## GOSHEN PRAIRIE SANDREED

Goshen prairie sandreed, a native rhizomatous, long-lived, warm-season perennial grass, was developed to stabilize and revegetate sandy range sites. It is especially adapted to 2,000 to 5,000 feet sites in eastern Montana and Wyoming, western Nebraska, and north-eastern Colorado where 12 or more inches of annual precipitation is received.

At Bridger, Montana, Goshen grows to about 34 inches high on dryland and to 70 inches with irrigation. Vigorous spring growth begins by the end of April, full bloom usually occurs by August, and the seed ripens by October.

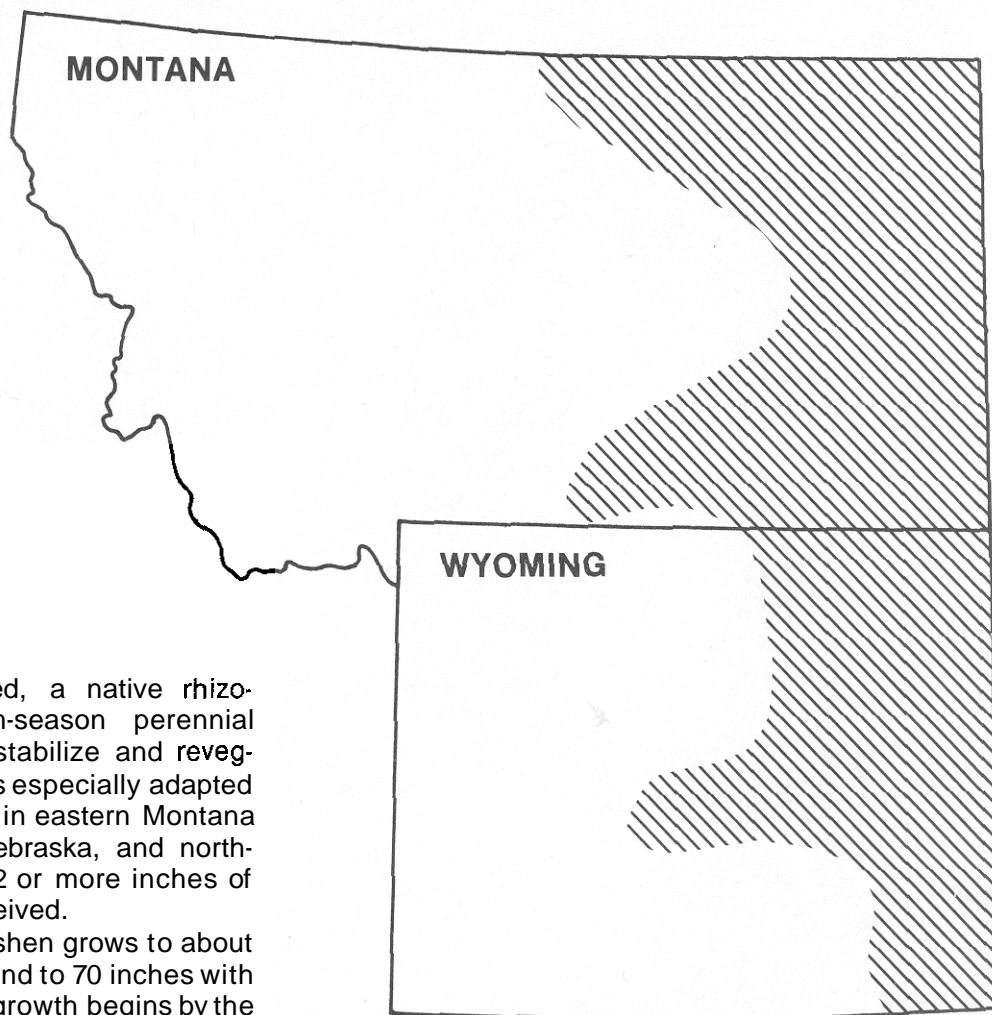
### Planting and Managing

Good stands of Goshen are usually established using standard rangeland seeding methods when planted between April and mid-May.

Goshen does well when seeded in a grass mixture including Critana thickspike wheatgrass, Rosana western wheatgrass, green needlegrass, or Indian ricegrass.

Grazing animals use prairie sandreed readily. They should not be allowed to use more than half the current season's growth by weight.

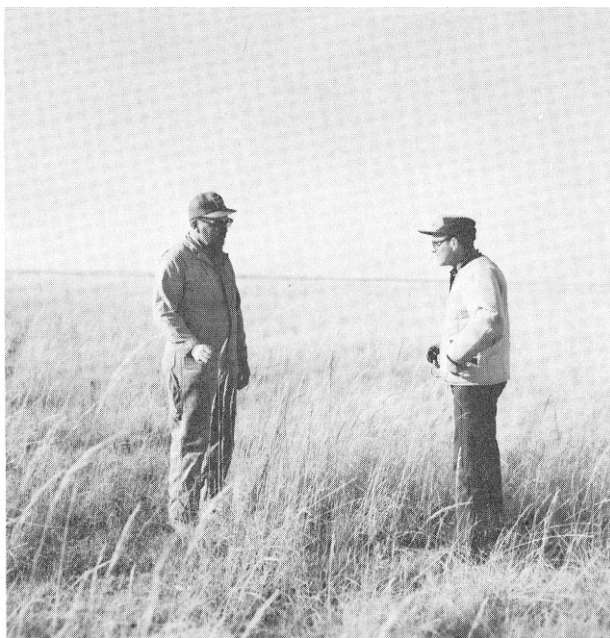
For seed production, Goshen should be



Areas where Goshen Prairie Sandreed is adapted

planted in rows and irrigated. Several cultivations are required the first year to suppress weed competition, but thereafter a late fall and early spring cultivation is usually enough. To maximize seed production do not irrigate Goshen during bloom. Fertilize in the spring according to soil test recommendations.

Goshen seed production is more difficult than most other grasses and requires some special management techniques.



## HISTORY

Goshen was originally collected in 1959 near Torrington, Wyoming. After testing at the Bridger Plant Materials Center, it was cooperatively released for commercial use in 1976 by the Soil Conservation Service (SCS) and Montana and Wyoming Agricultural Experiment Stations.

The Plant Materials Center (PMC) at Bridger, Montana, grows and evaluates grasses, legumes, shrubs, forbs, and trees for specific conservation uses in Montana and Wyoming. The Center is part of a national plant materials program administered by SCS.

The Bridger PMC is owned by the conservation districts of Montana and Wyoming and is operated by the SCS.

For more information on Goshen prairie sandreed, contact your local SCS office or conservation district.

Assistance provided by SCS is available to everyone without regard to race, sex, color, creed, or national origin. (March 1981)