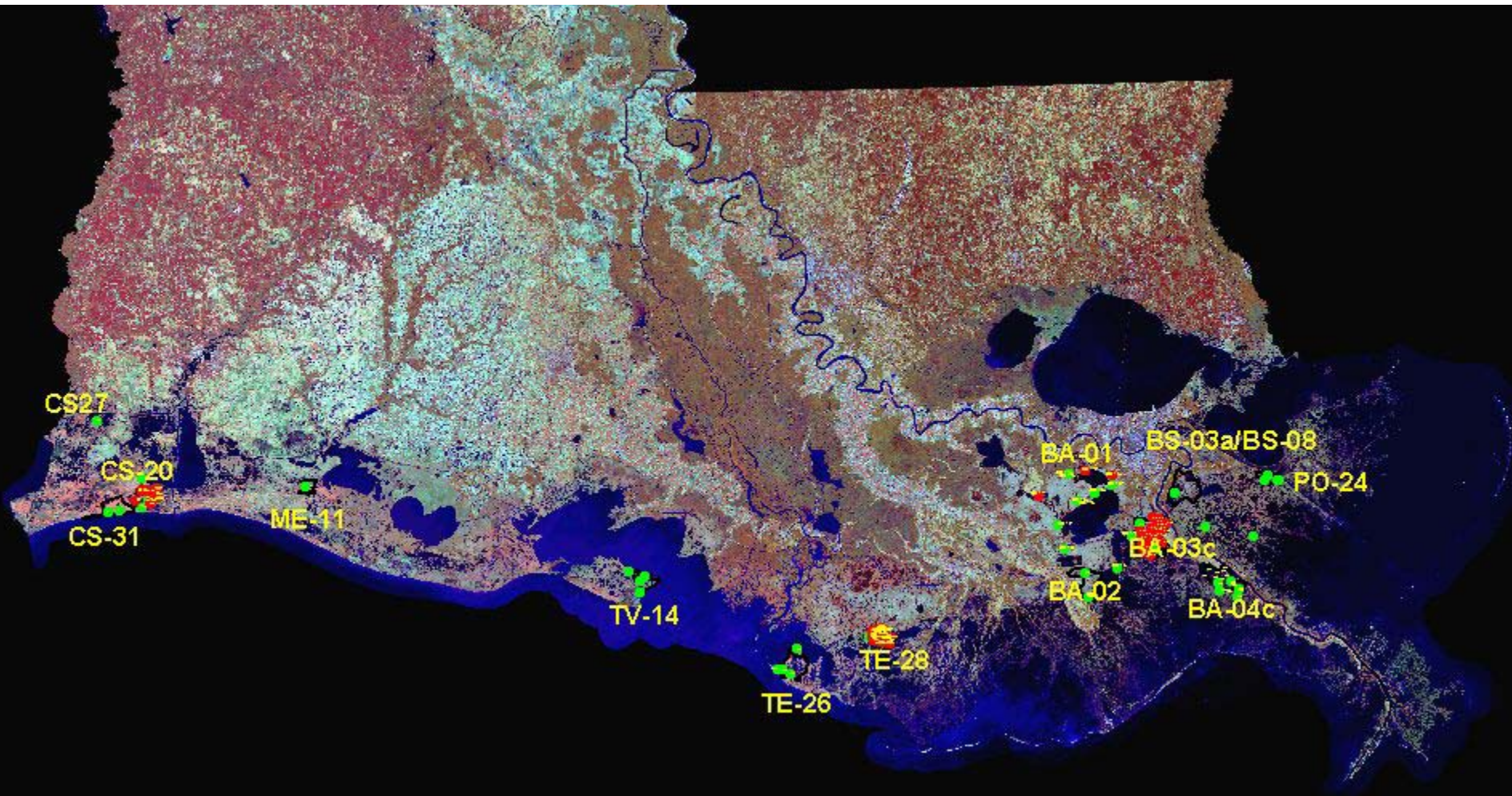


OVERVIEW of Continuous Recorders and Discrete stations for monthly sampling under Task 3, MODULE 1 of the Coastwide Reference Monitoring System – Wetlands RFP: Project Specific Monitoring

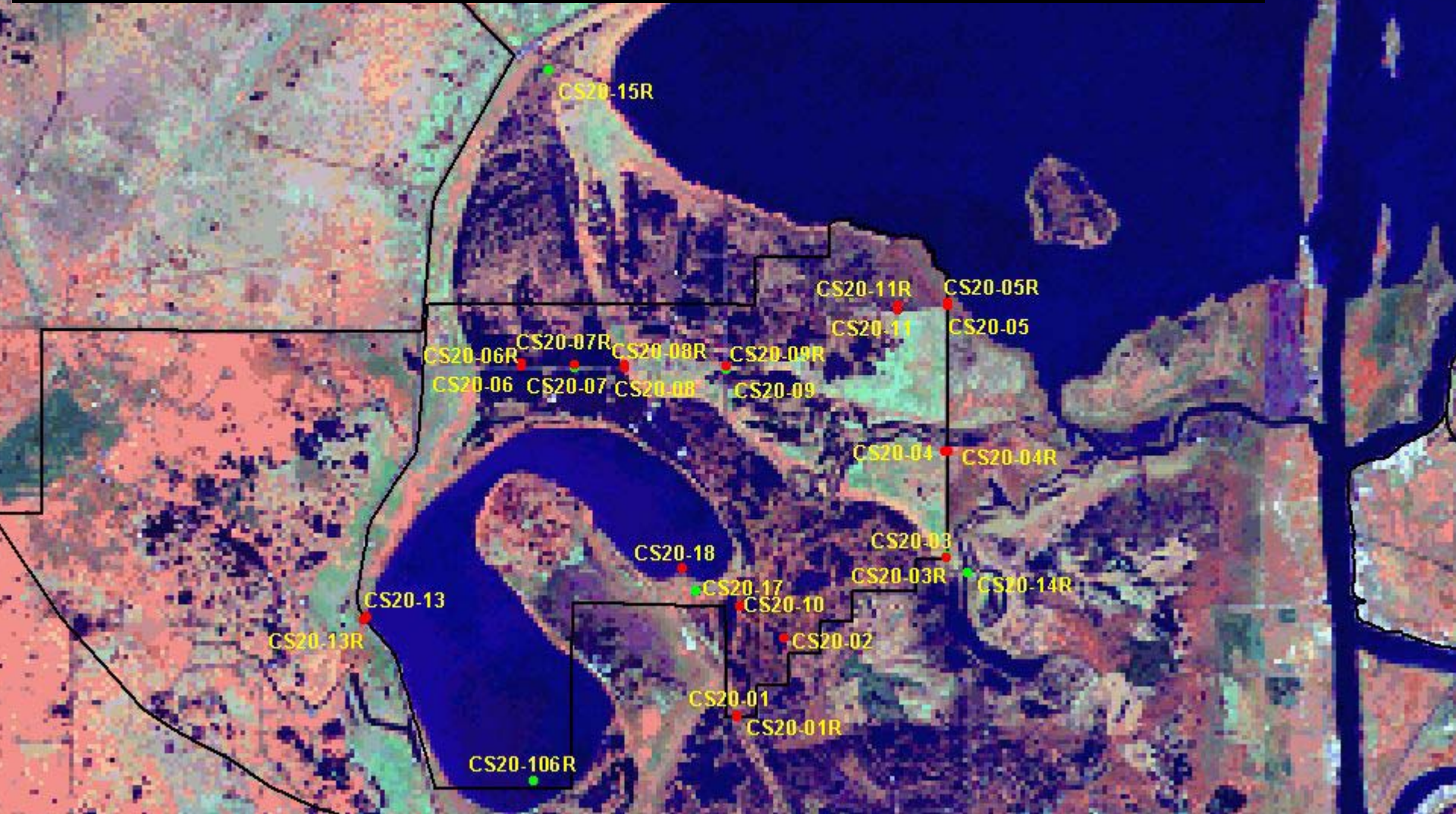




## Continuous recorder and Discrete station locations

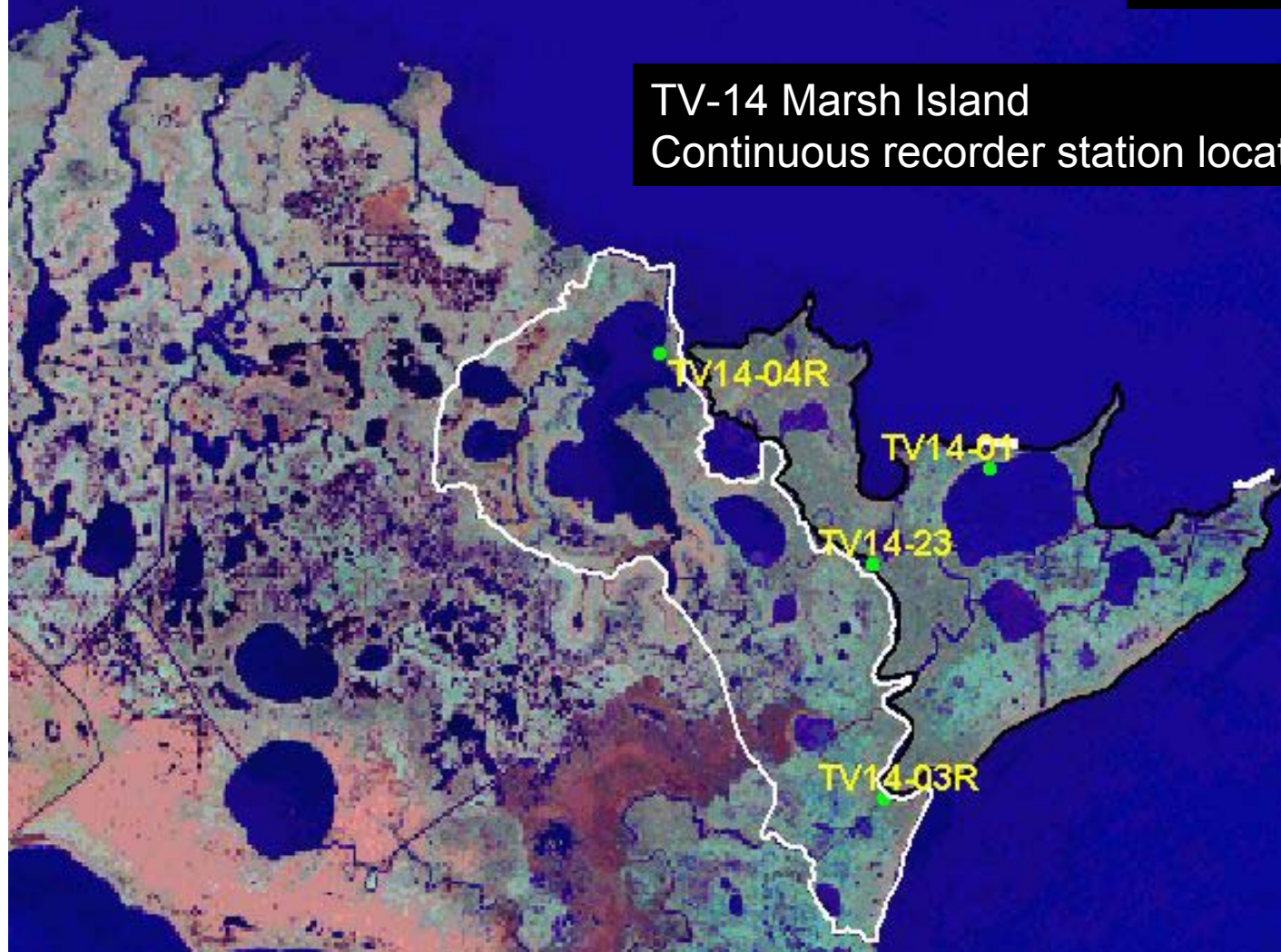
- 7 continuous recorders (these stations are also discrete stations)
- 27 Discrete stations (including the 7 recorder stations)

Recorder stations = 03, 07, 09, 14R, 15R, 106R, and 17





TV-14 Marsh Island  
Continuous recorder station locations



- Project Boundary
- Reference Boundary

- 4 Continuous recorder stations

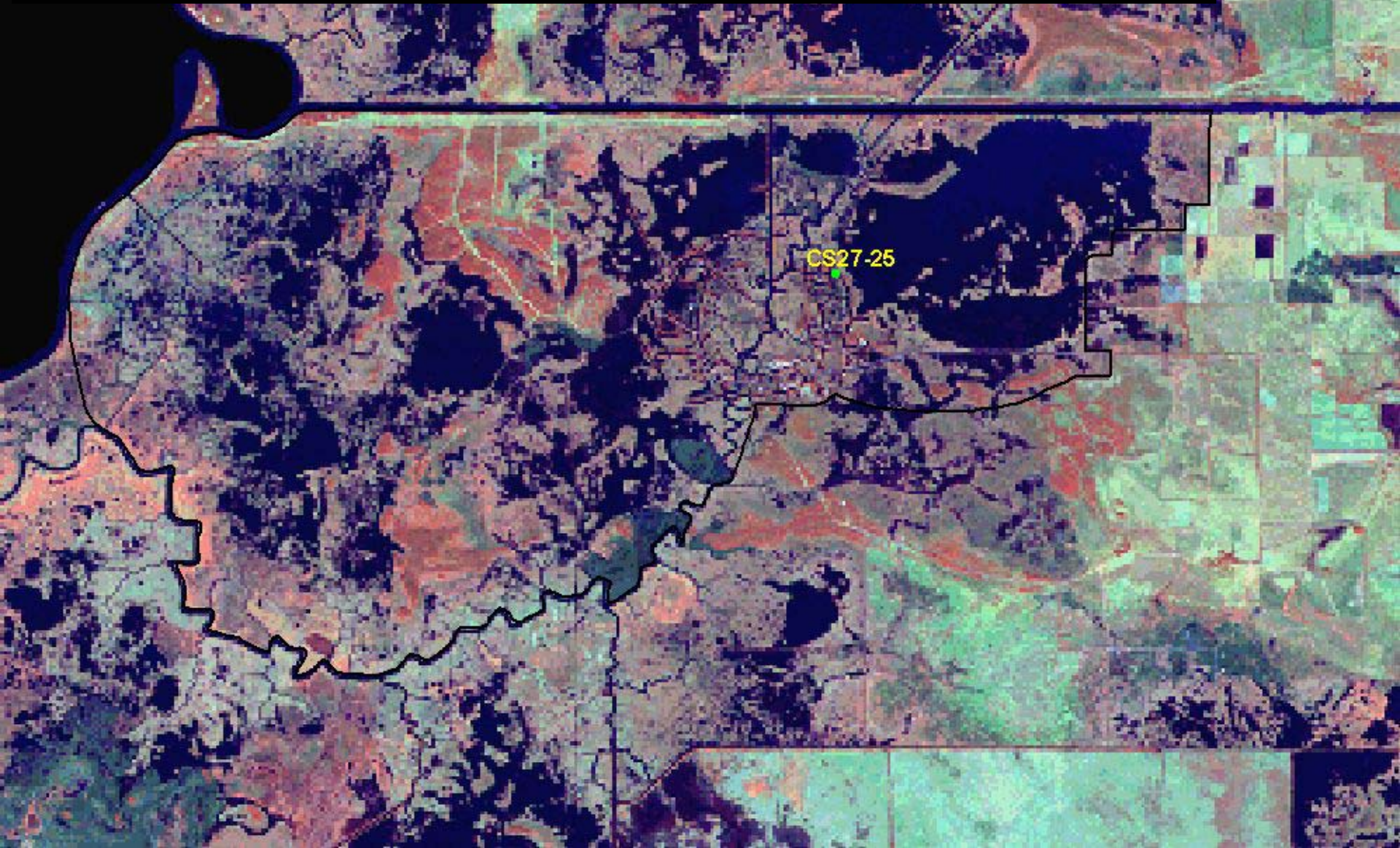


# CS-27 Black Bayou Hydrologic Restoration

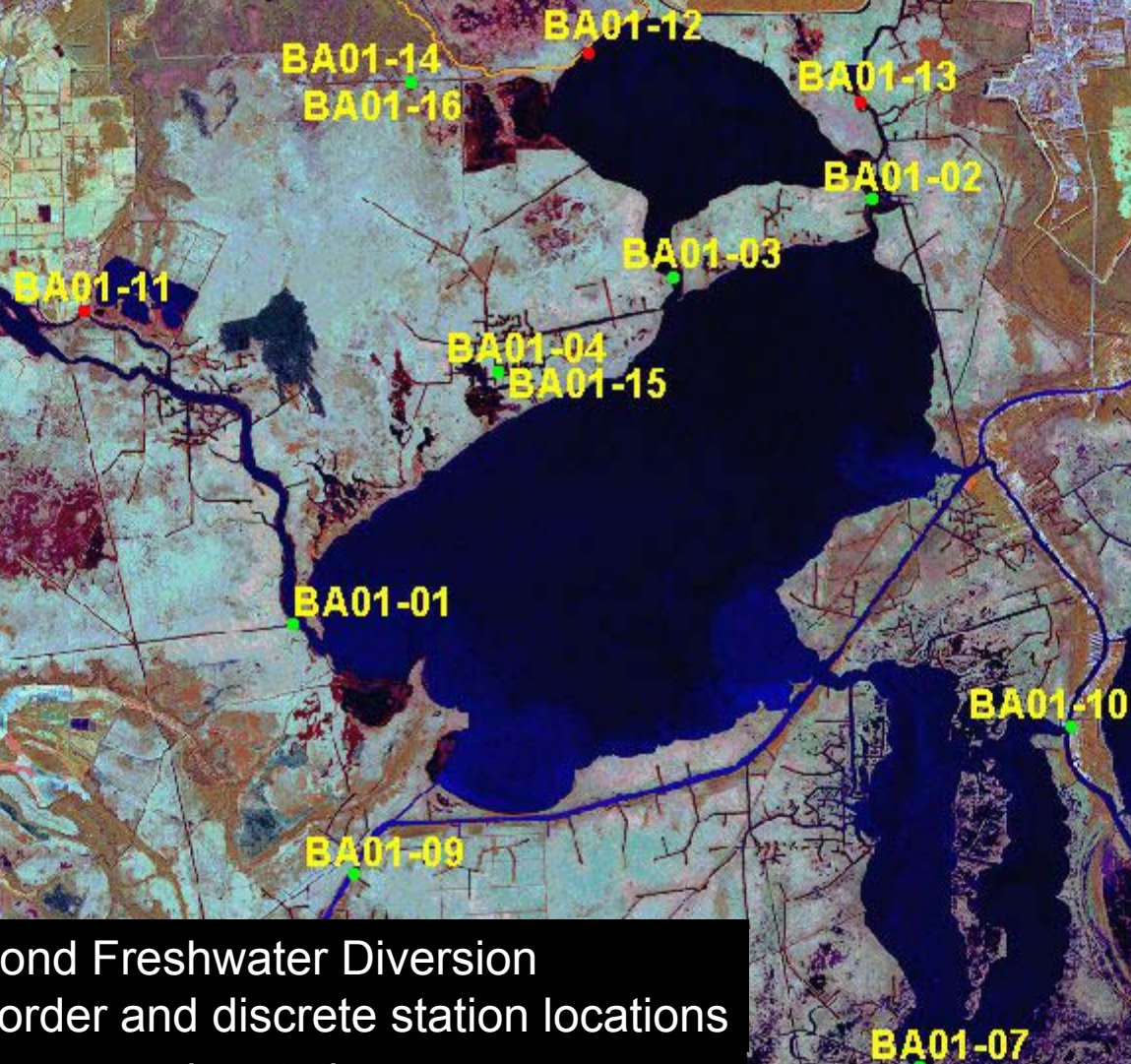
## Continuous recorder station location

TASK 3:MODULE 1

- 1 continuous recorder







BA-01 Davis Pond Freshwater Diversion  
Continuous recorder and discrete station locations

- 10 Continuous recorder stations
- 3 Discrete stations

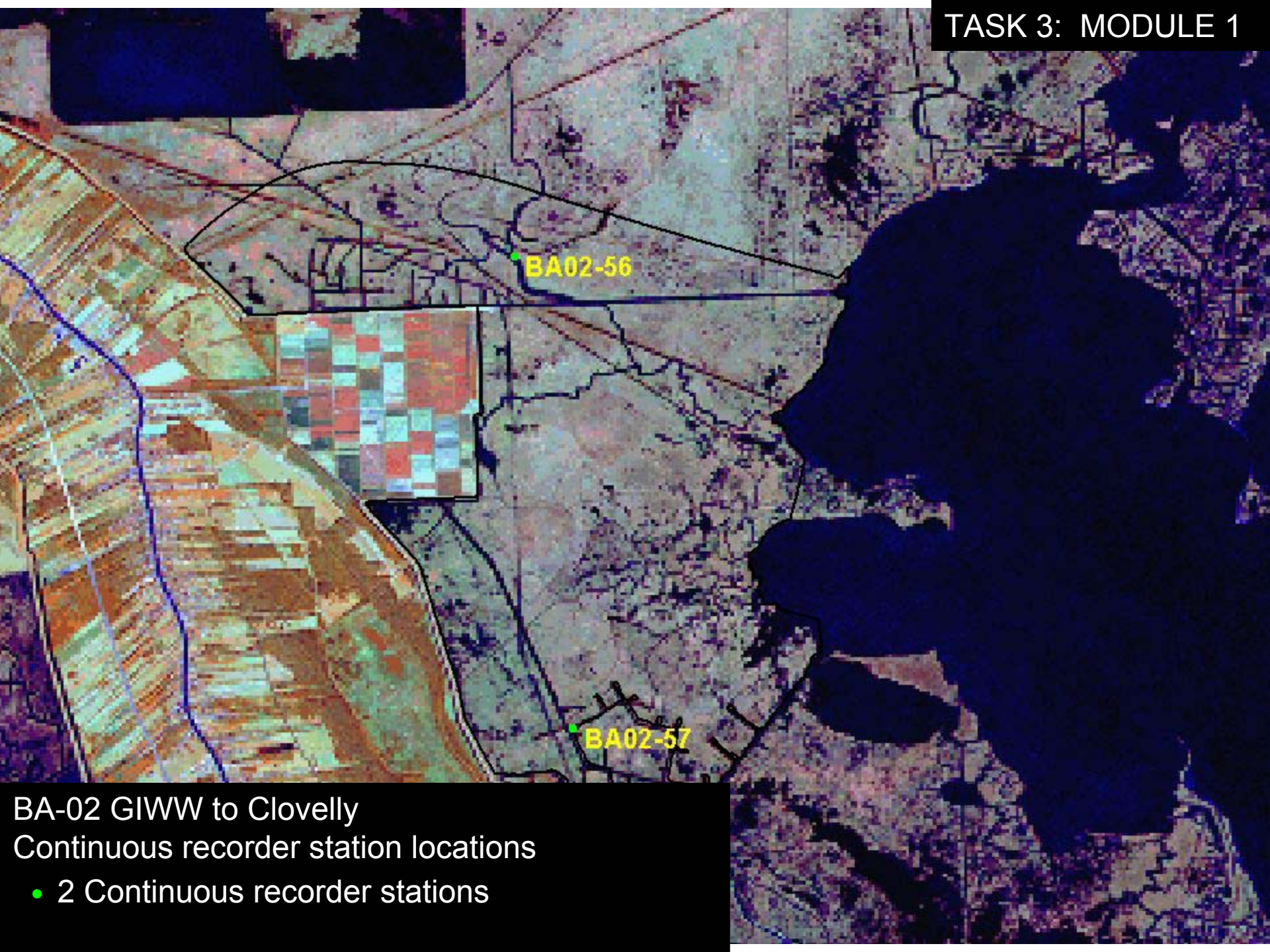




CS-31 Holly Beach  
Continuous recorder station locations

- 2 Continuous recorder stations





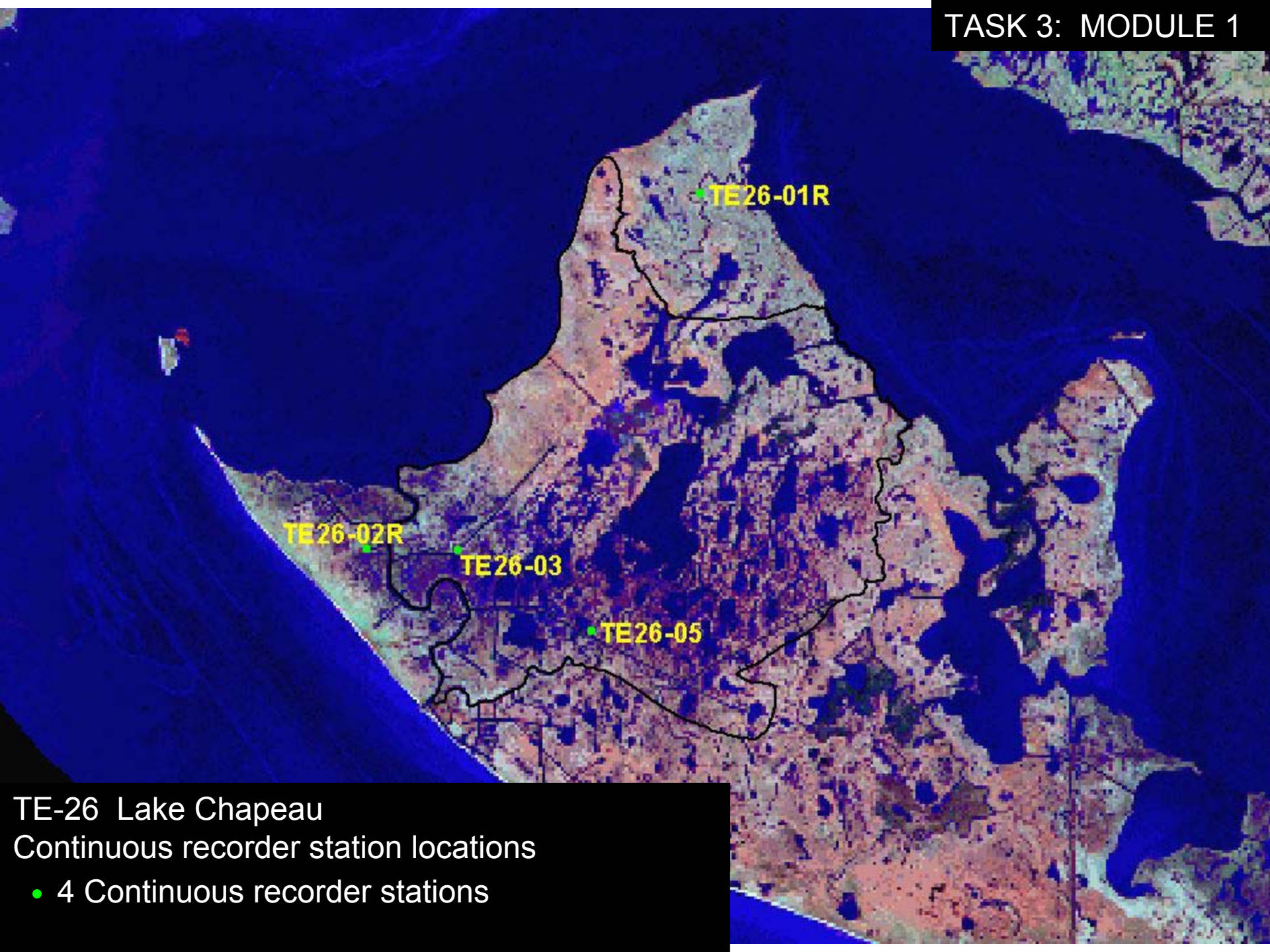
BA02-56

BA02-57

BA-02 GIWW to Clovelly  
Continuous recorder station locations

- 2 Continuous recorder stations





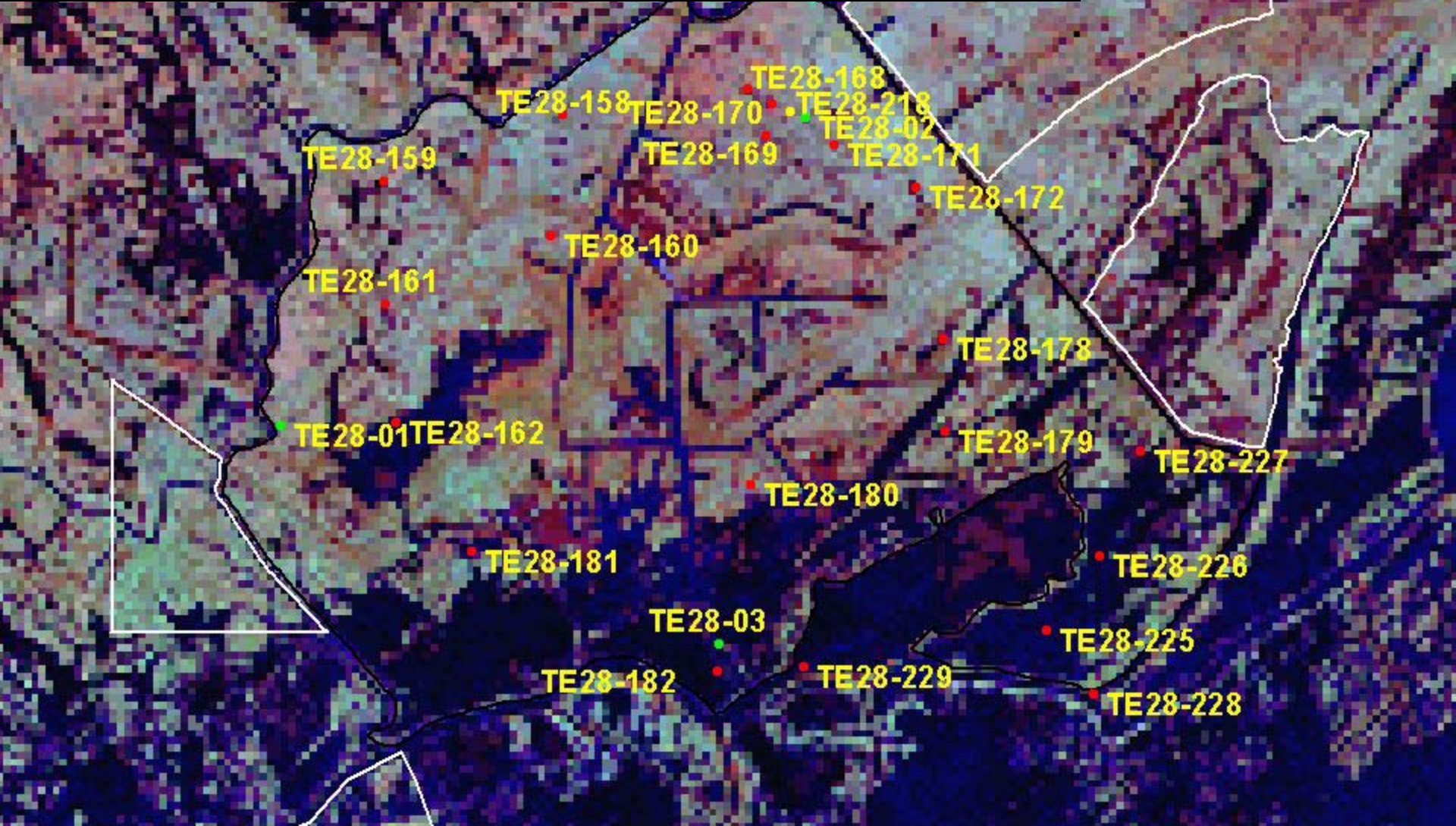
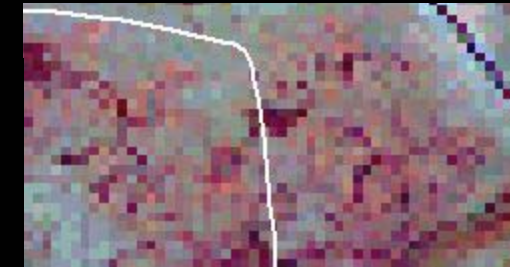
TE-26 Lake Chapeau  
Continuous recorder station locations  
• 4 Continuous recorder stations



TE-28 Brady Canal

Continuous recorder, marsh mat, and discrete station locations

- 3 Continuous recorder stations
- 1 Marsh Mat station
- 20 Discrete stations



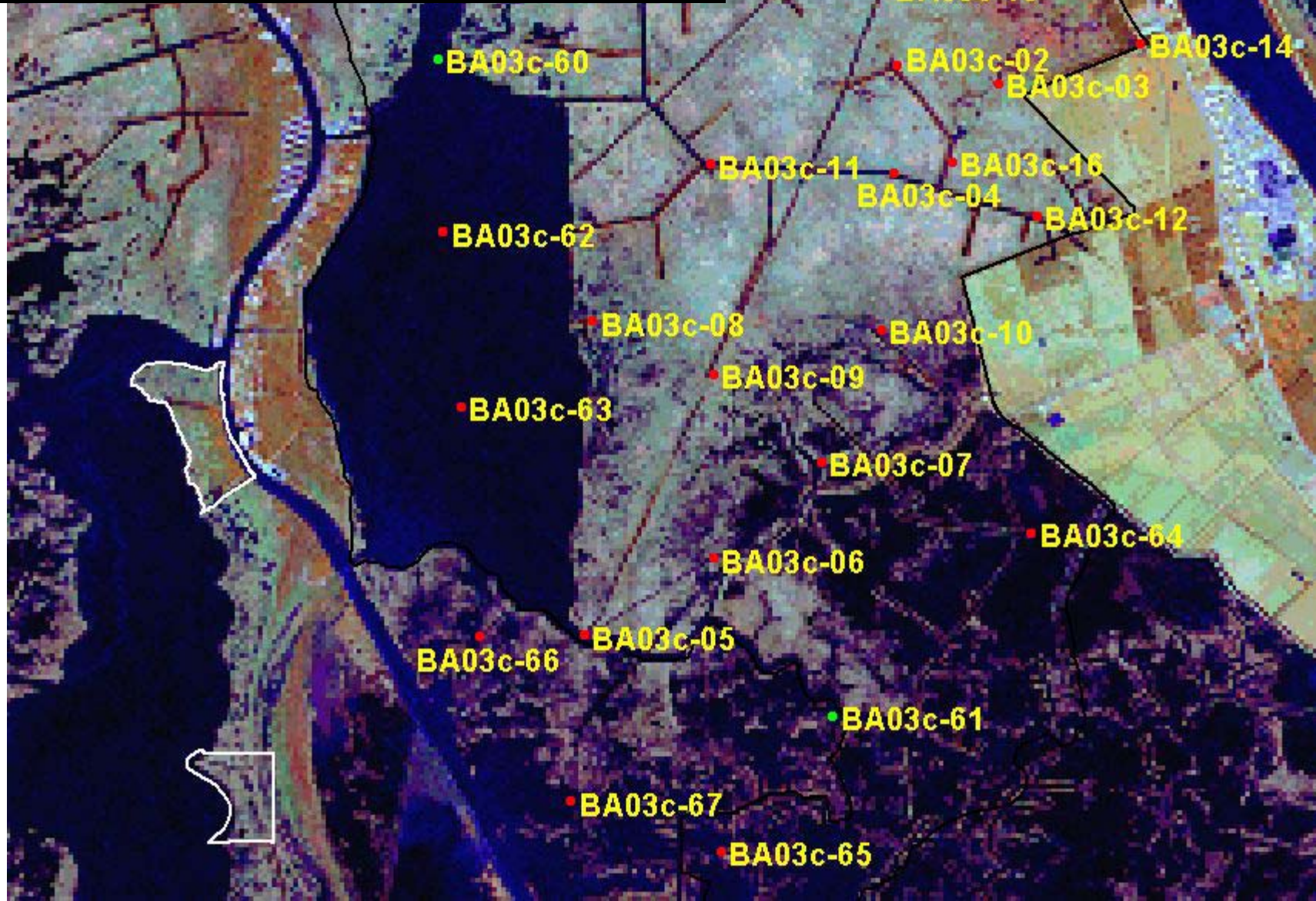


# BA-03c Naomi Outfall Management

## Continuous recorder and discrete station locations

- 2 Continuous recorder stations (also discrete)
- 24 Discrete stations (including 2 continuous stns)

TASK 3: MODULE 1

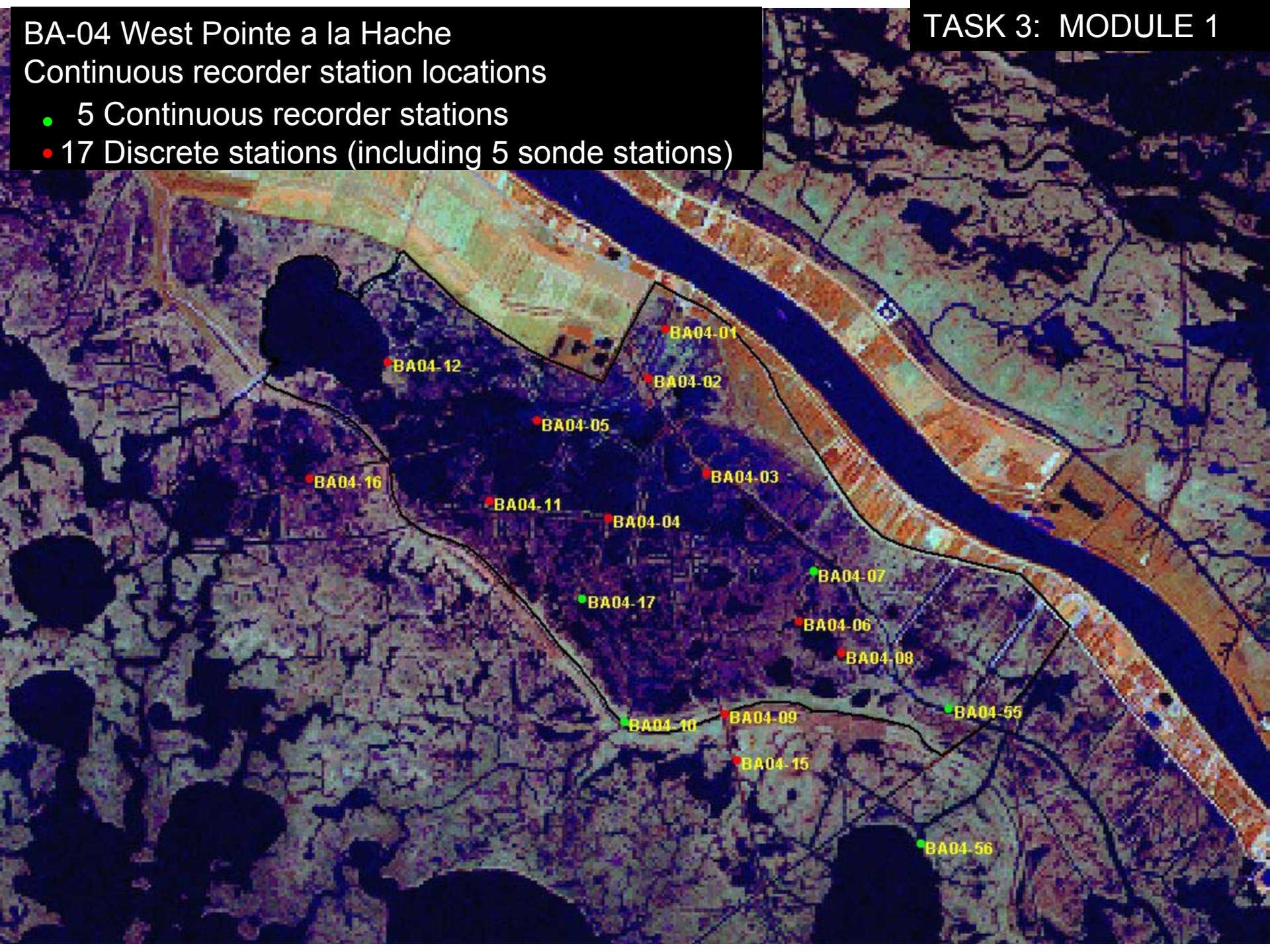




# BA-04 West Pointe a la Hache

## Continuous recorder station locations

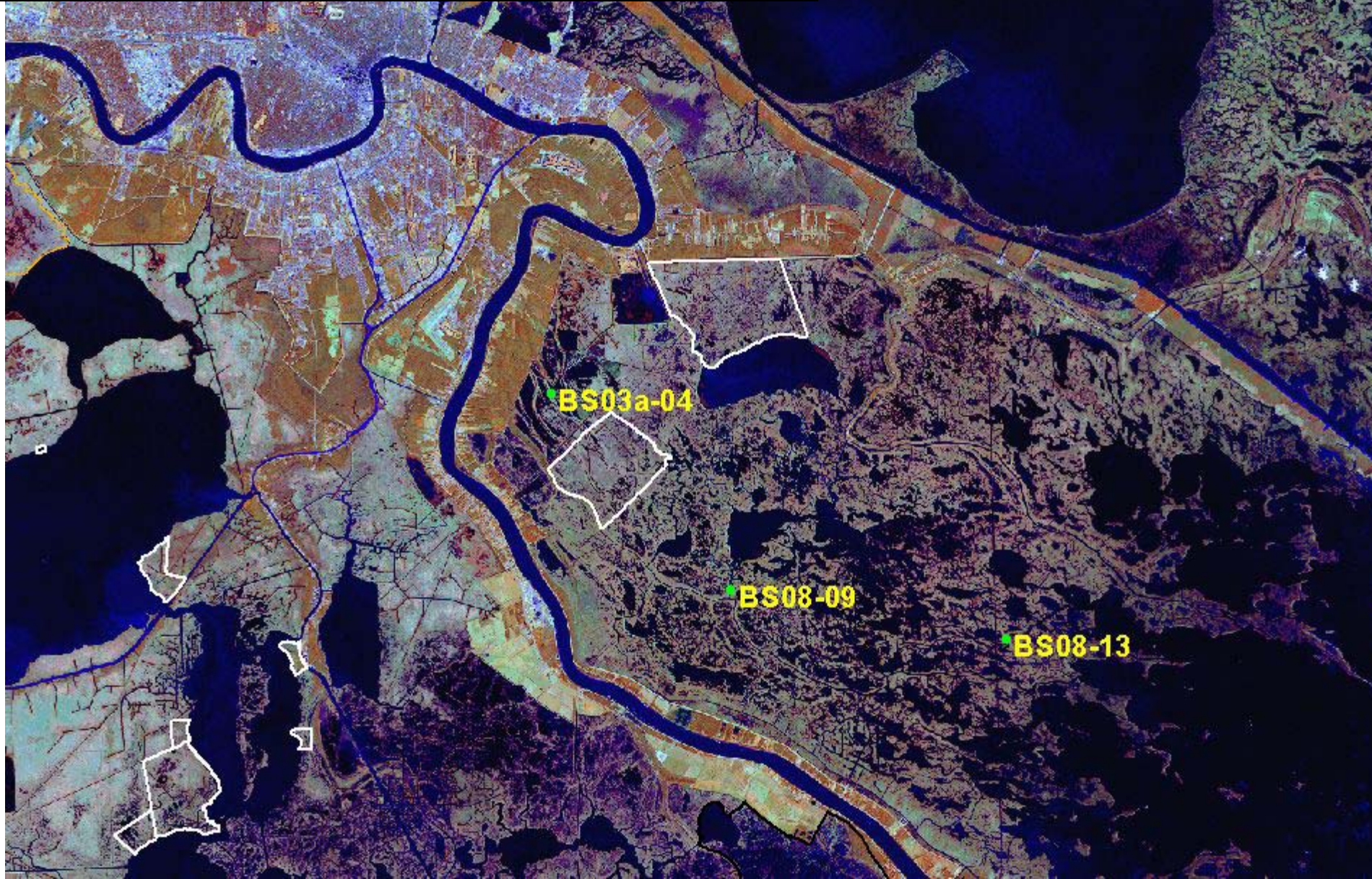
- 5 Continuous recorder stations
- 17 Discrete stations (including 5 sonde stations)





BS-08/BS-03a Caernarvon  
Continuous recorder station locations

- 3 Continuous recorder stations





PO-24 Hopedale  
Continuous recorder station locations

- 5 Continuous recorder stations



• PO24-05

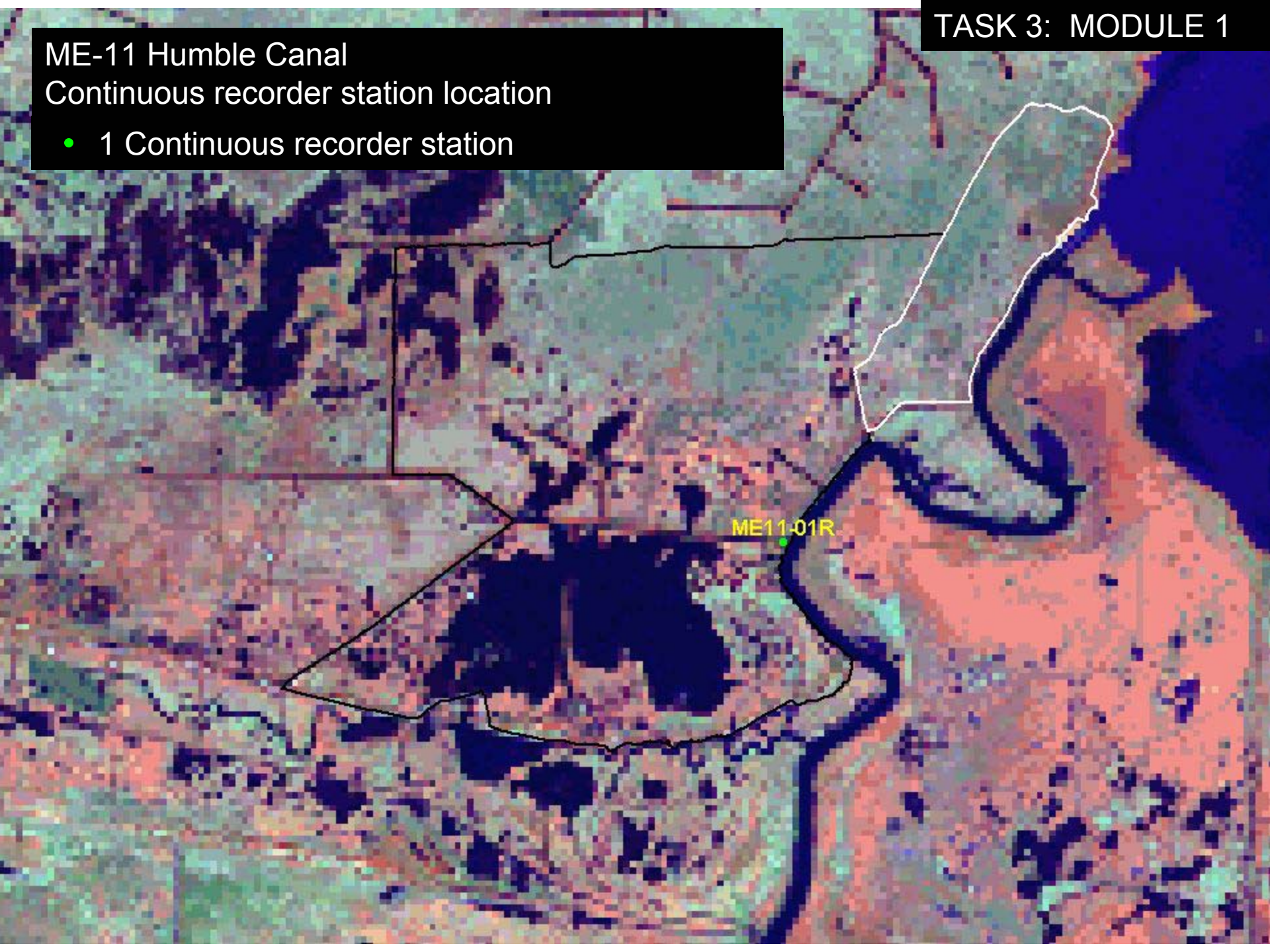
• PO24-03  
• PO24-04

• PO24-01  
• PO24-02



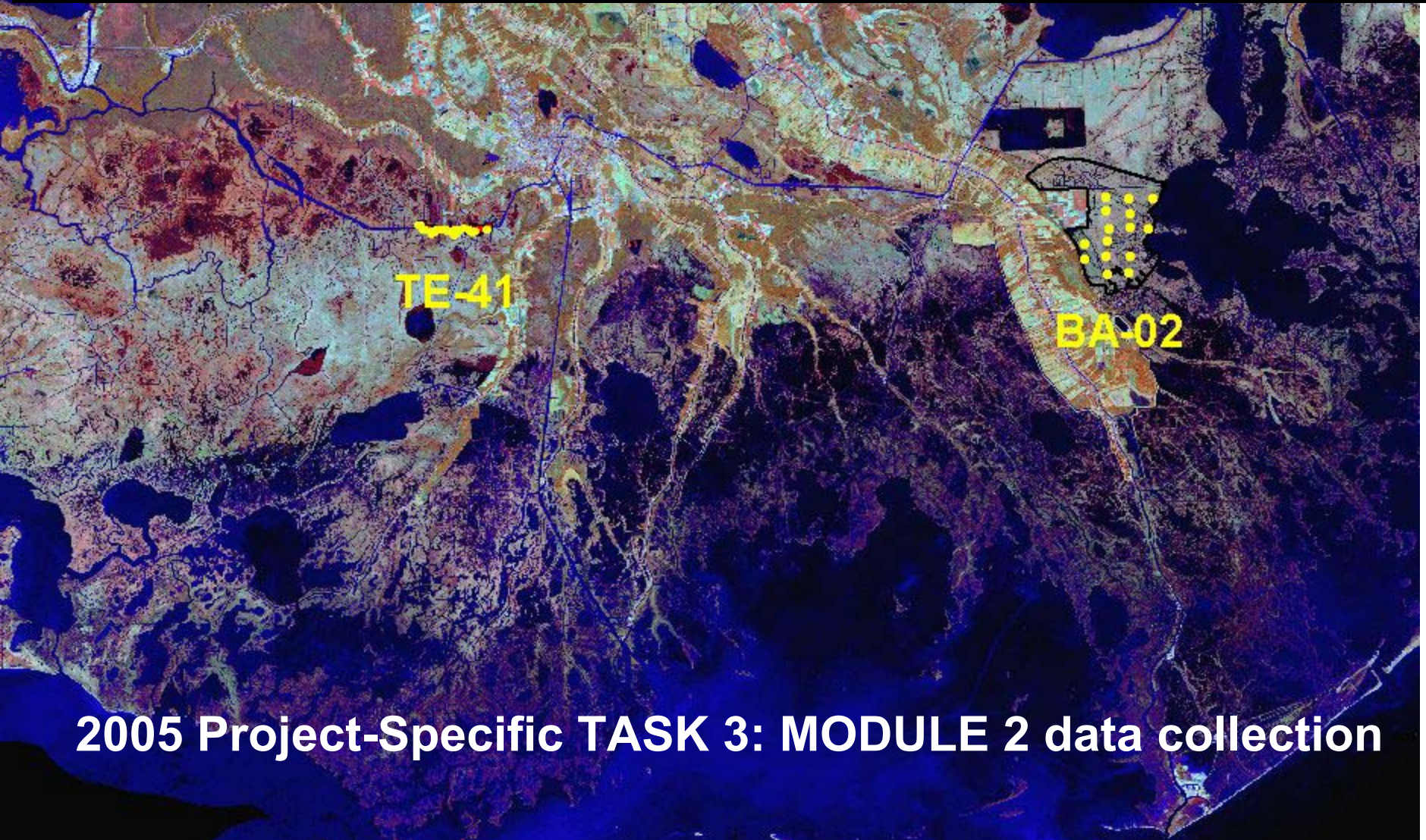
ME-11 Humble Canal  
Continuous recorder station location

- 1 Continuous recorder station





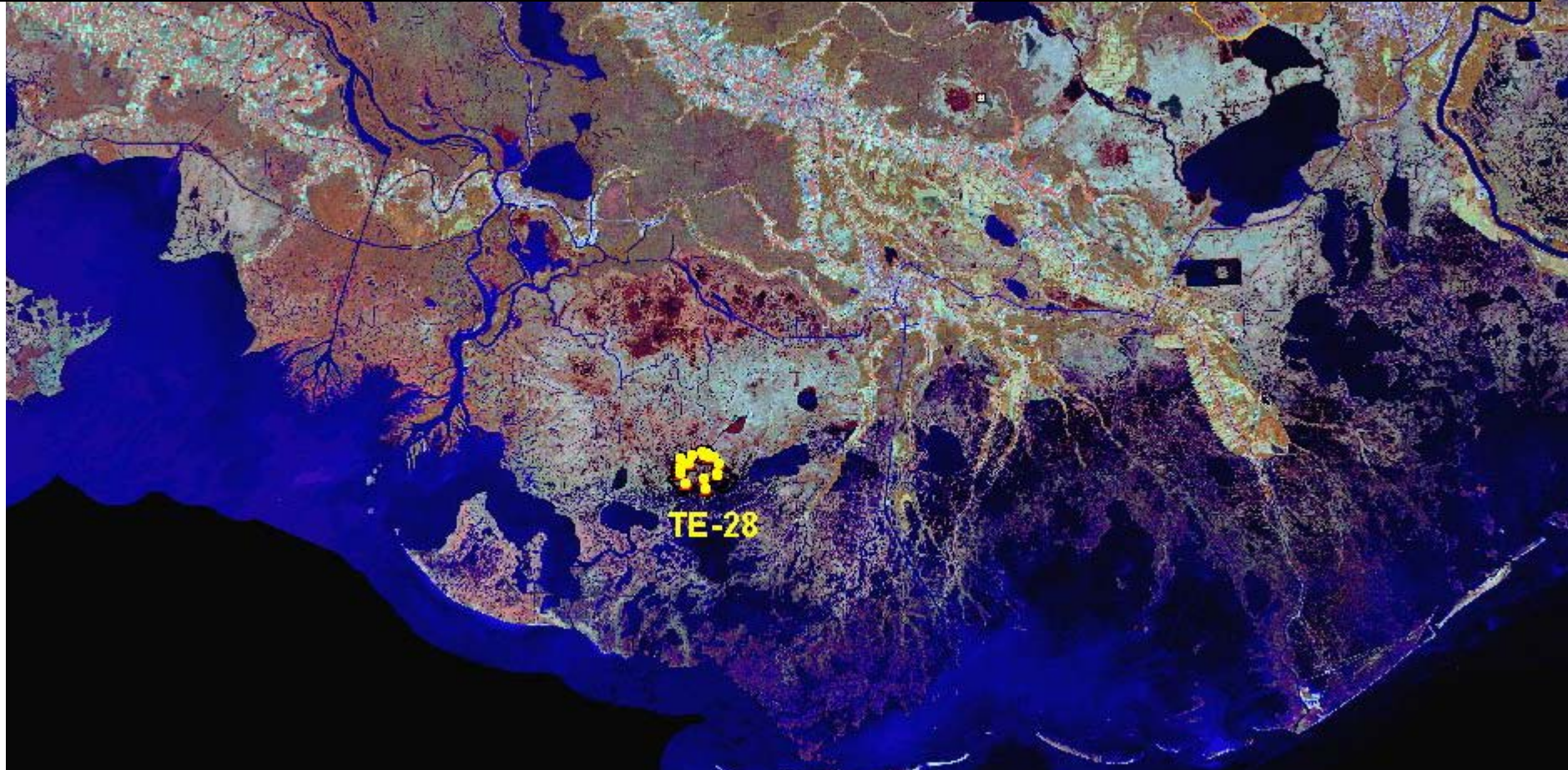
OVERVIEW of Continuous Recorders and Discrete stations for monthly sampling under Task 3, MODULE 2 of the Coastwide Reference Monitoring System – Wetlands RFP: Project Specific Monitoring



2005 Project-Specific TASK 3: MODULE 2 data collection



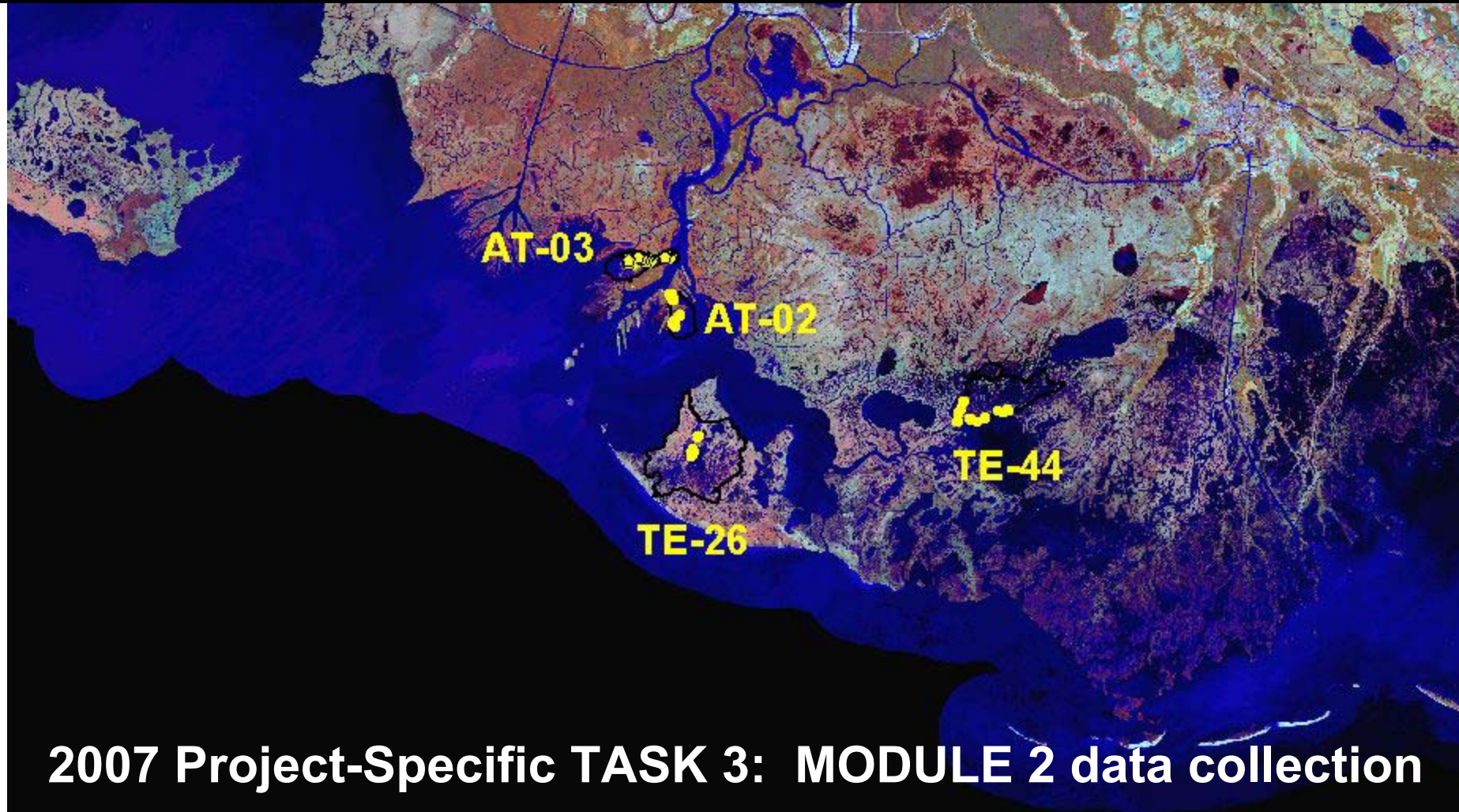
OVERVIEW of Continuous Recorders and Discrete stations for monthly sampling under Task 3, MODULE 2 of the Coastwide Reference Monitoring System – Wetlands RFP: Project Specific Monitoring



**2006 Project-Specific TASK 3: MODULE 2 data collection**



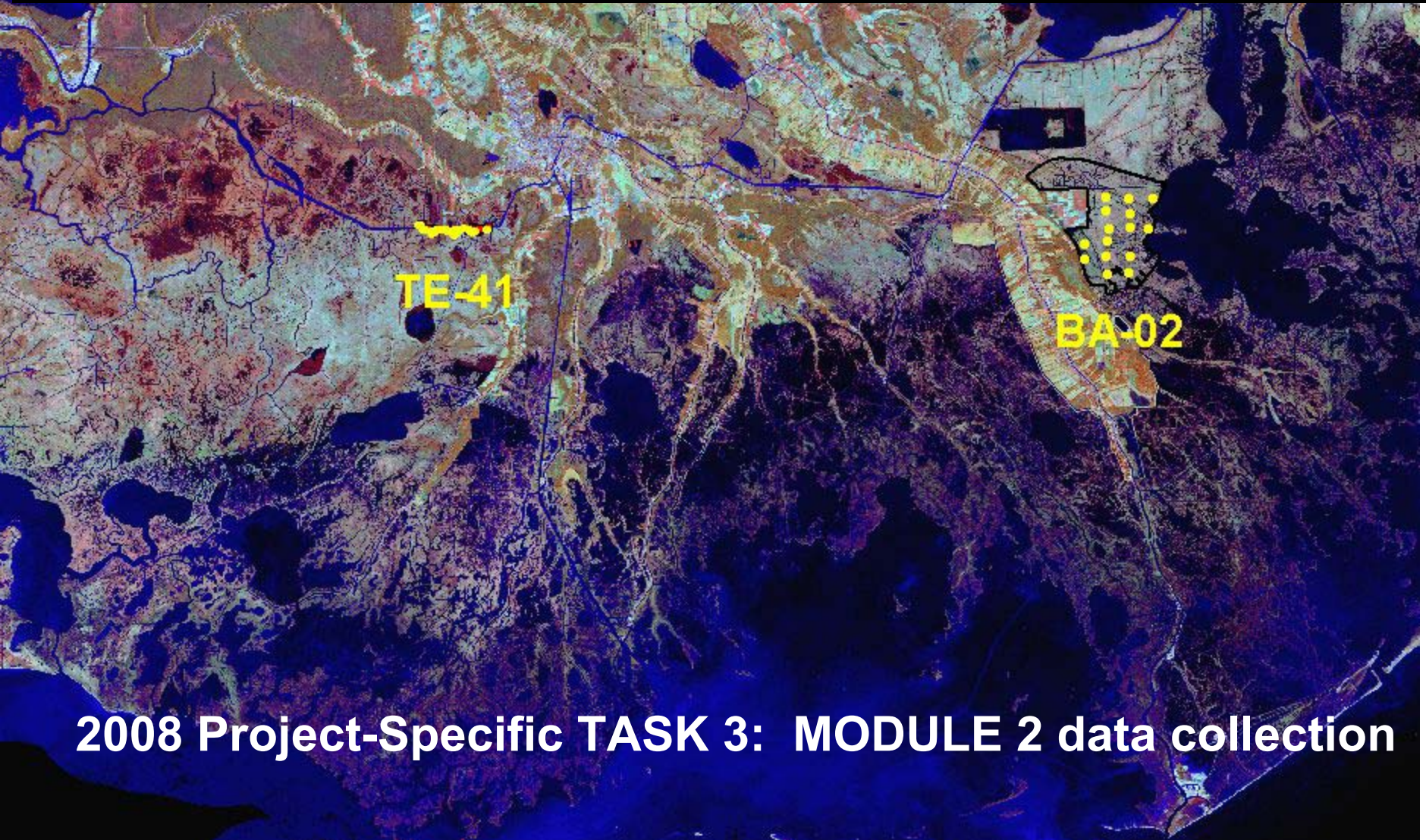
OVERVIEW of Continuous Recorders and Discrete stations for monthly sampling under Task 3, MODULE 2 of the Coastwide Reference Monitoring System – Wetlands RFP: Project Specific Monitoring



**2007 Project-Specific TASK 3: MODULE 2 data collection**



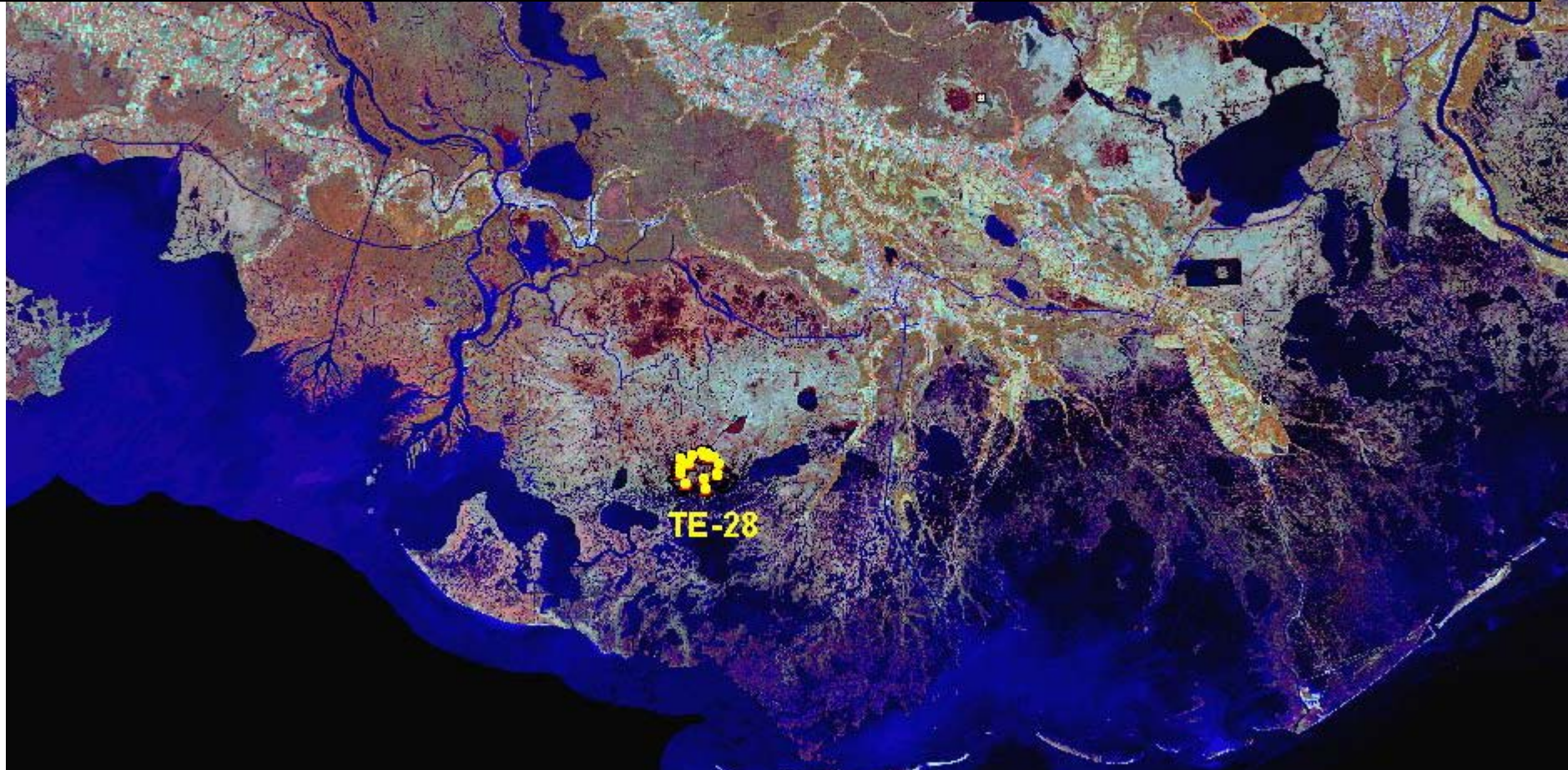
OVERVIEW of Continuous Recorders and Discrete stations for monthly sampling under Task 3, MODULE 2 of the Coastwide Reference Monitoring System – Wetlands RFP: Project Specific Monitoring



2008 Project-Specific TASK 3: MODULE 2 data collection



**OVERVIEW of Continuous Recorders and Discrete stations for monthly sampling under Task 3, MODULE 2 of the Coastwide Reference Monitoring System – Wetlands RFP: Project Specific Monitoring**

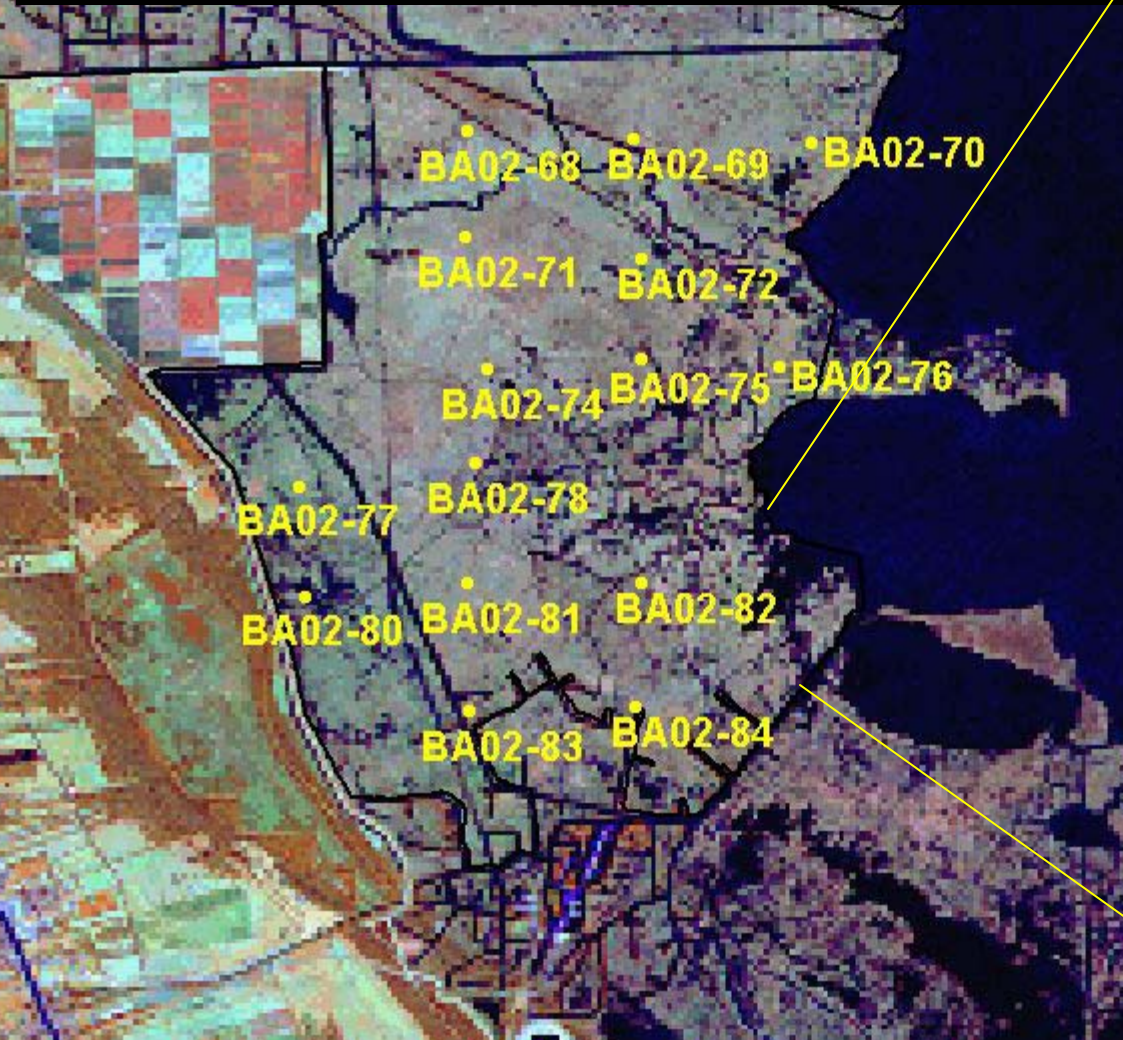


**2009 Project-Specific TASK 3: MODULE 2 data collection**



BA-02

- 15 Vegetation stations
- 15 Soils stations ( at same locations as vegetation)
- 30 Shoreline stations



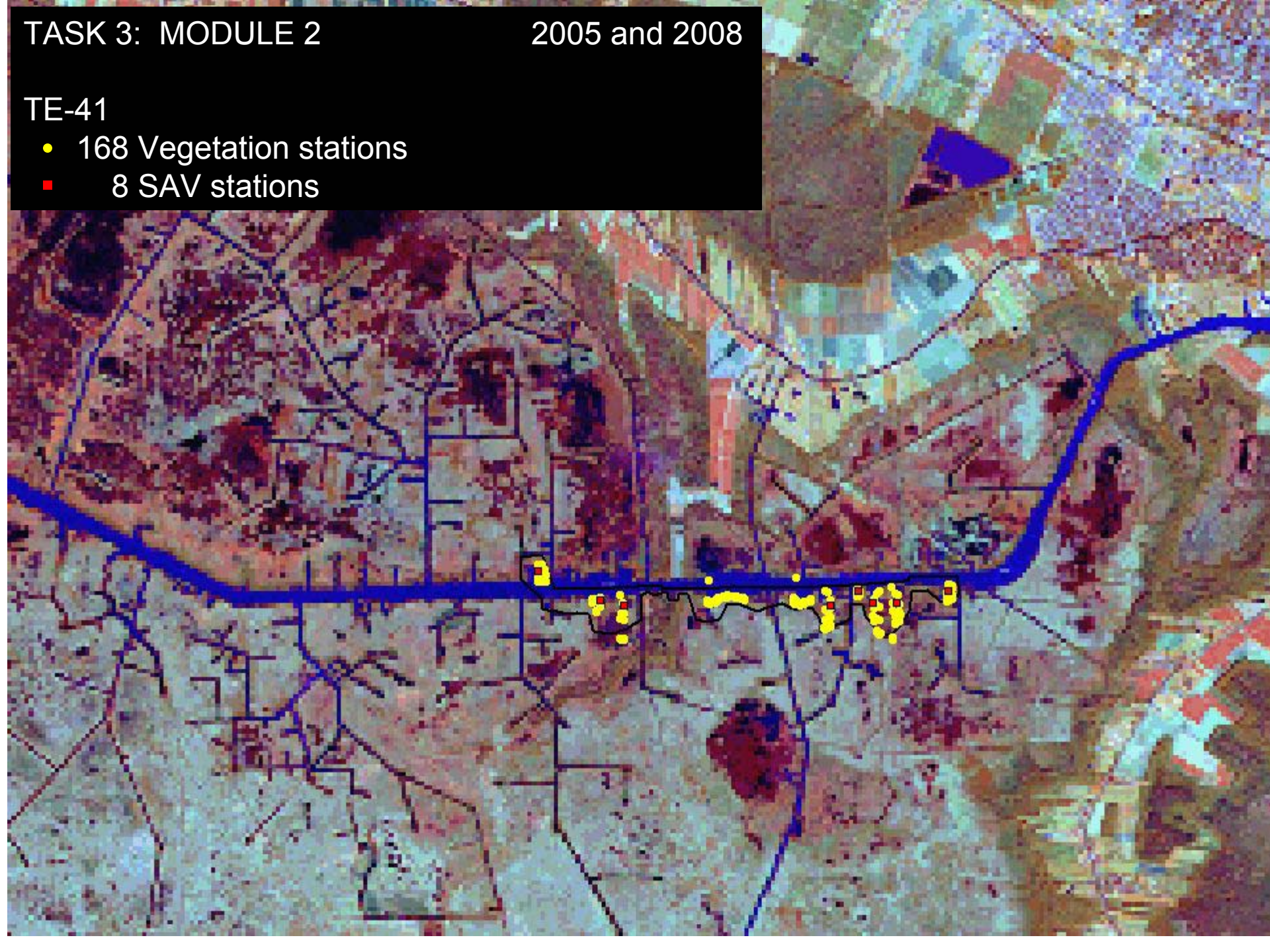


TASK 3: MODULE 2

2005 and 2008

TE-41

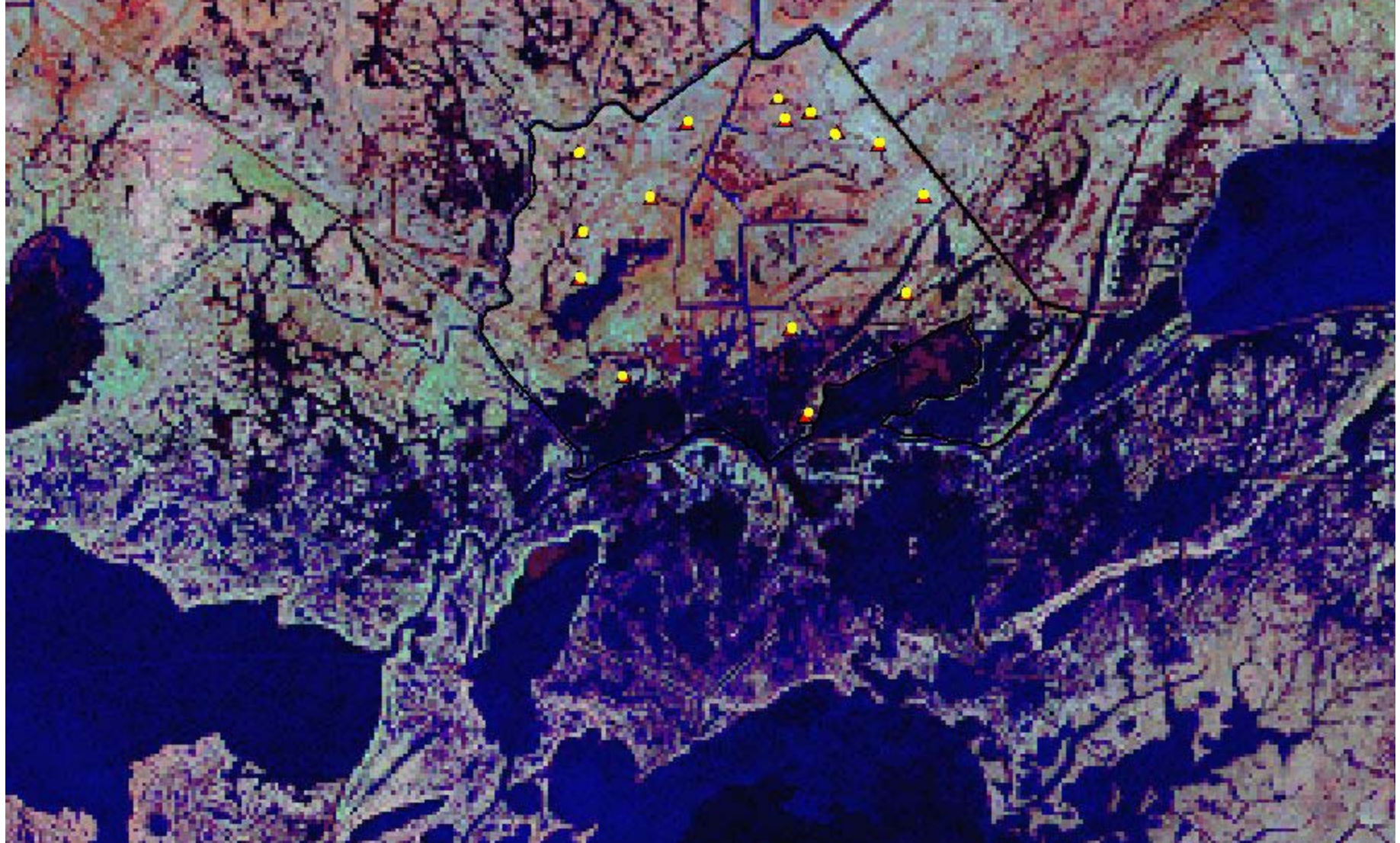
- 168 Vegetation stations
- 8 SAV stations





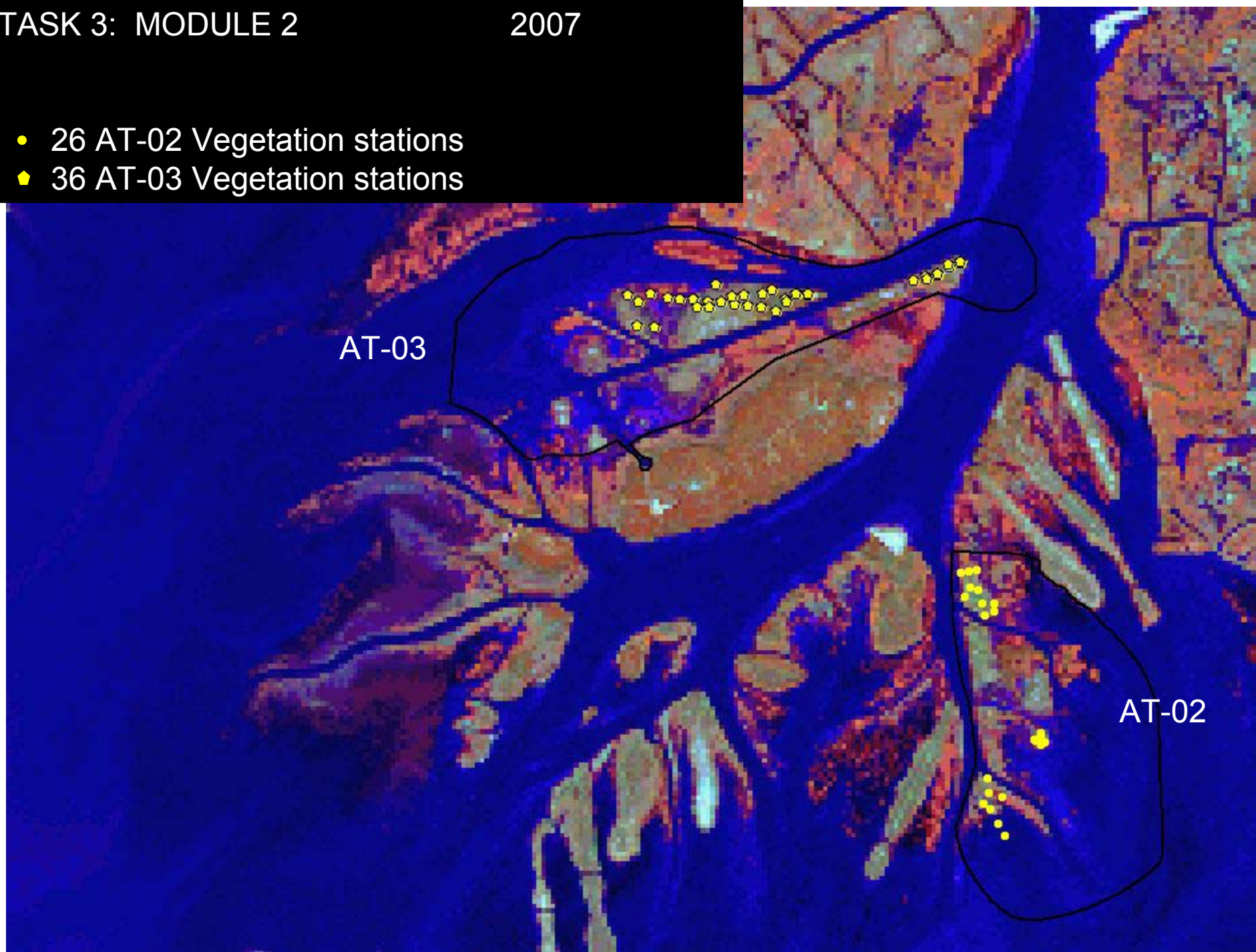
TE-28

- 30 Vegetation stations (2 at each point)
- ▲ 45 Accretion stations (3 at each point)





- 26 AT-02 Vegetation stations
- 36 AT-03 Vegetation stations



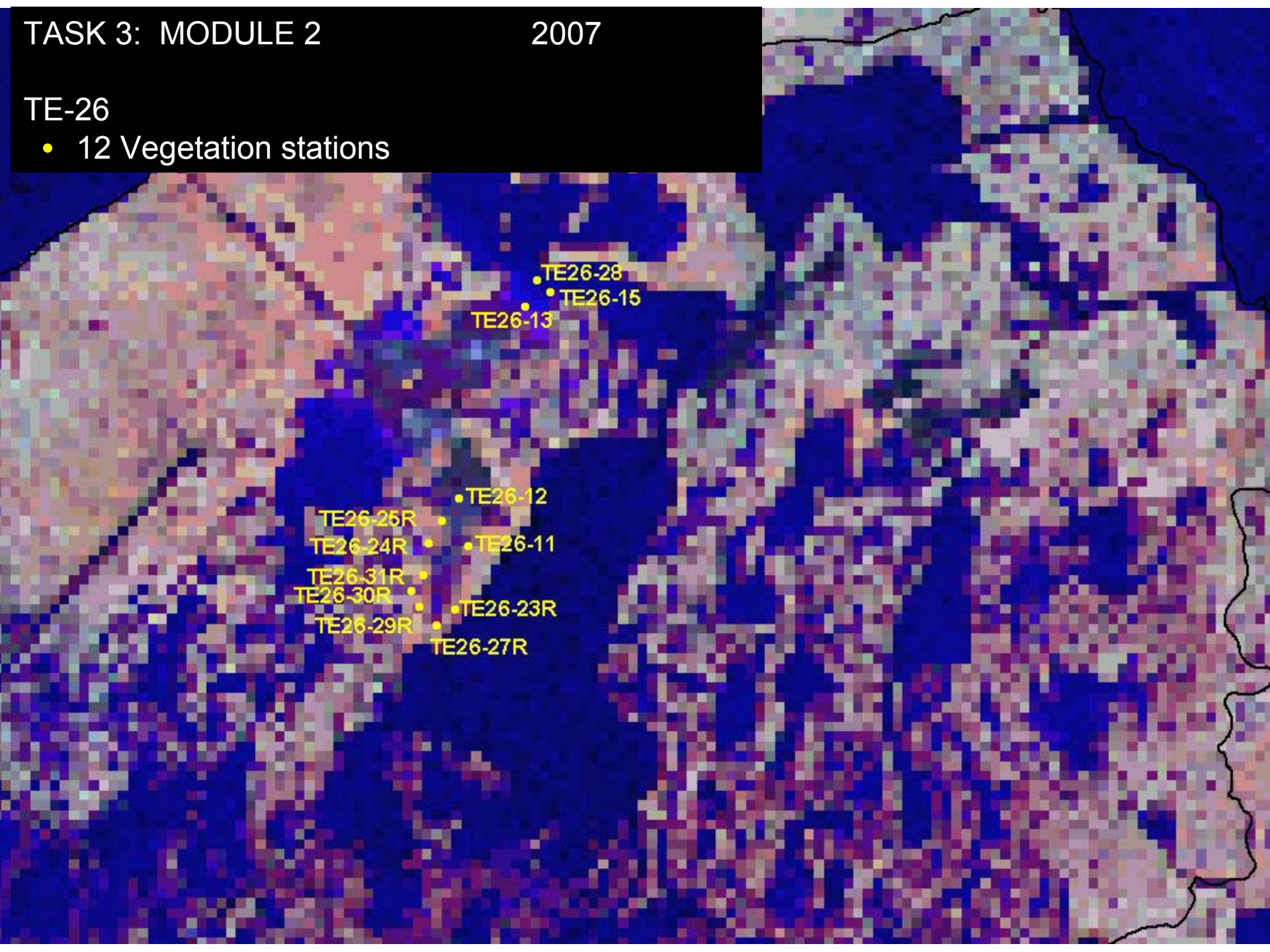
AT-03

AT-02



TE-26

- 12 Vegetation stations





TE-44

- 100 Vegetation stations (10 segments of 10 stations each)

