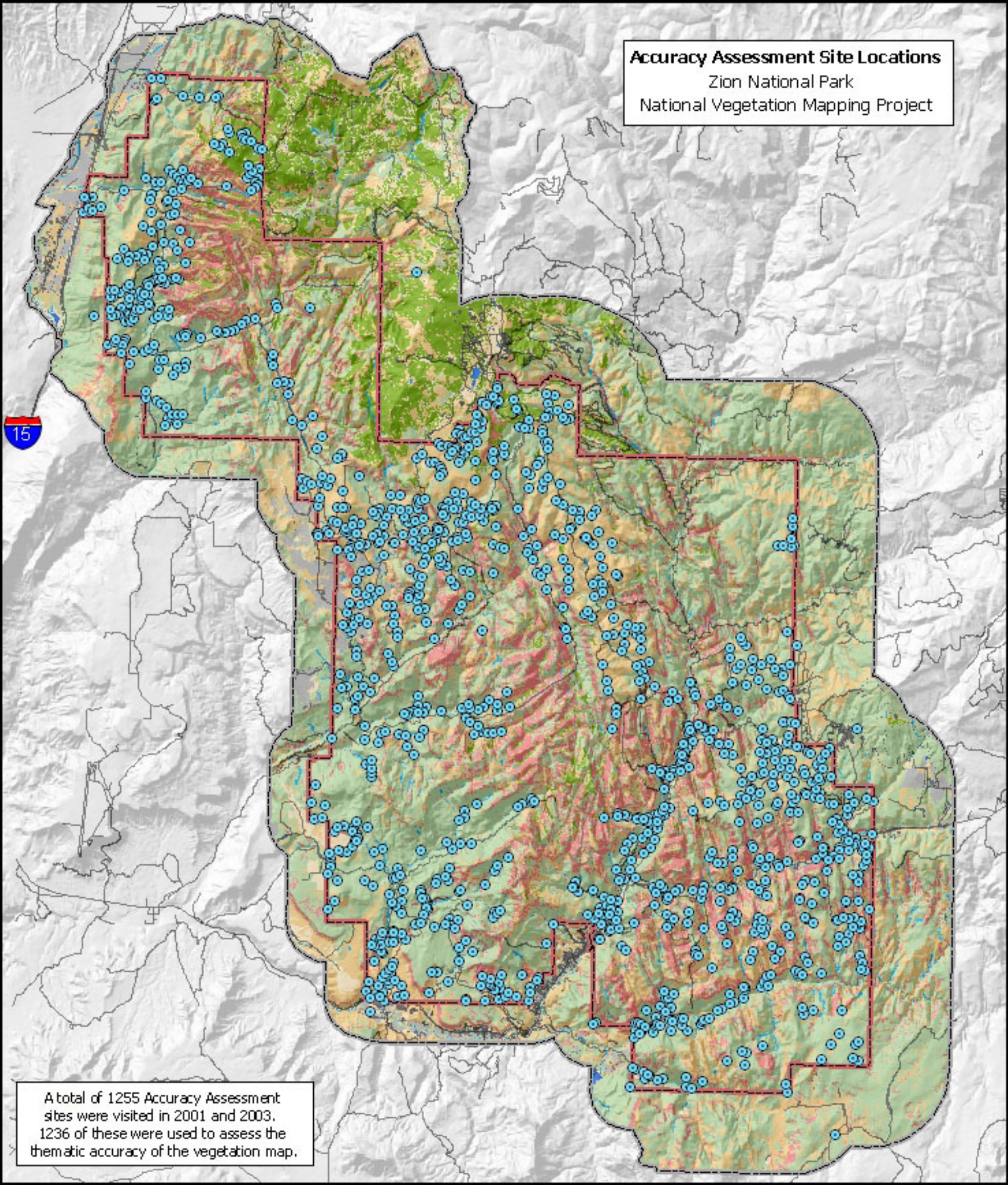


**Accuracy Assessment Site Locations**  
 Zion National Park  
 National Vegetation Mapping Project



A total of 1255 Accuracy Assessment sites were visited in 2001 and 2003. 1236 of these were used to assess the thematic accuracy of the vegetation map.

Legend		
Accuracy Assessment Points	Agricultural	Streams
Mapping Project Boundary	Barren	Herbaceous Vegetation
Zion National Park Boundary	Impoundments	Shrubland
Roads and Trails	Land-Use	Woodland
	Forest	

1:200,000 scale  
 Projection UTM, Zone 12,  
 Datum NAD83, Units Meters

NORTH

0 1 2 4 6 Kilometers

0 1 2 4 6 Miles

