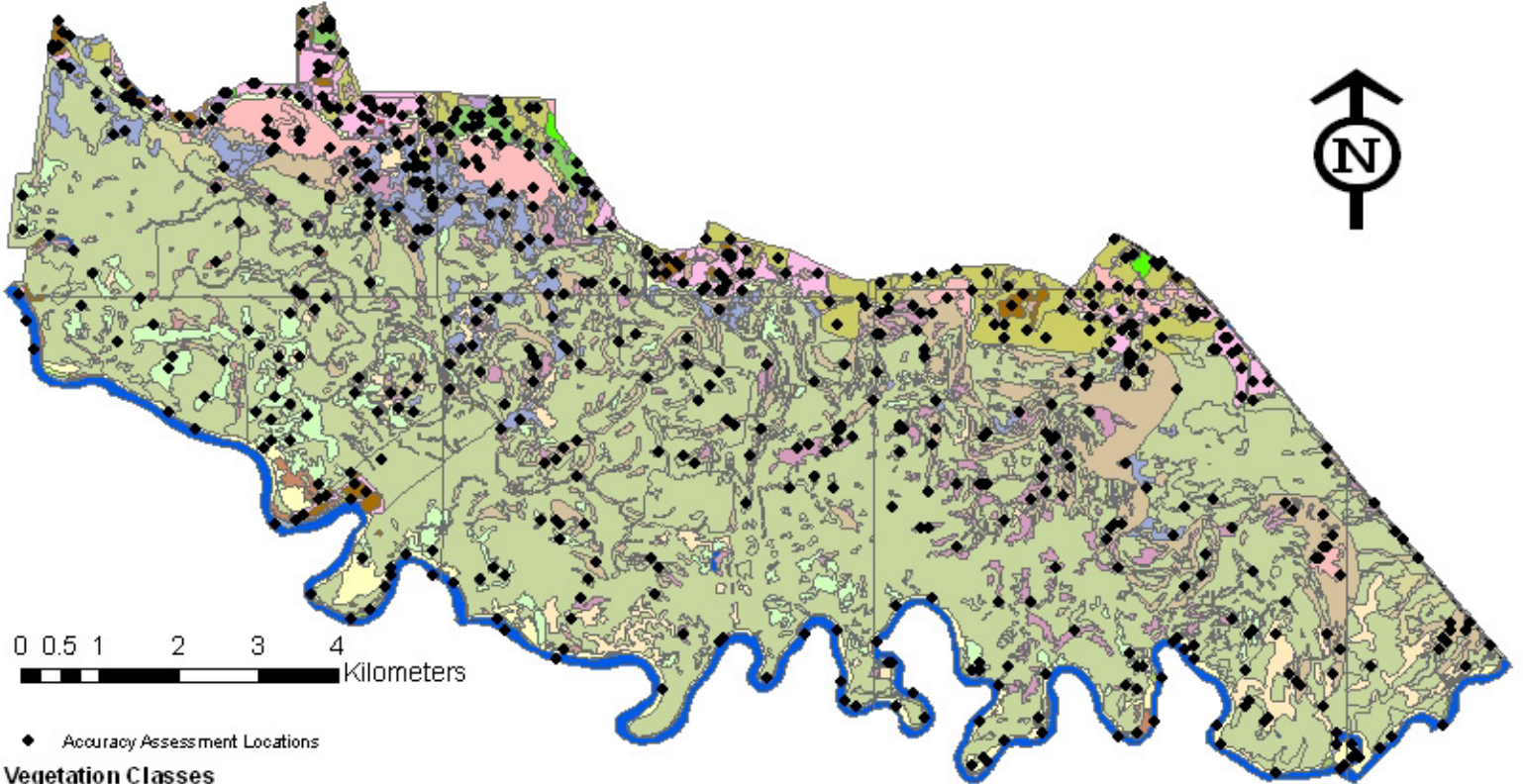


Congaree National Park Accuracy Assessment Locations



◆ Accuracy Assessment Locations

Vegetation Classes

- Celtis laevigata* - *liquidambar styraciflua* - *Quercus laurifolia* / *Carpinus caroliniana* / *Arundinaria gigantea* / *Carex lupulina* Forest
- Celtis laevigata* - *liquidambar styraciflua* - *Quercus laurifolia* / *Carpinus caroliniana* / *Arundinaria gigantea* / *Carex lupulina* Forest - Sweet Gum component
- Nyssa biflora* - (*Acer rubrum*) / *Ilex opaca* / *Leucothoe axillaris* / *Carex atlantica* ssp. *capillacea* Forest
- Vitis rotundifolia* - *Ampelopsis arborea* - *Campsis radicans* Vine-Shrubland
- Liquidambar styraciflua* - *Quercus laurifolia* / *Magnolia virginiana* / *Carex folliculata* Forest
- Celtis laevigata* - *Fraxinus pennsylvanica* - *Acer negundo* - (*Juglans nigra*) / *Asimina triloba* / *Carex grayi* Forest
- Fagus grandifolia* - *Quercus nigra* Forest
- Planera aquatica* Forest
- Quercus phellos* / *Carex (intumescens, jorii)* - *Chasmanthium sessiliflorum* / *Sphagnum lescourii* Forest
- Taxodium distichum* - *Nyssa aquatica* / *Fraxinus caroliniana* Forest
- Taxodium distichum* - *Nyssa aquatica* / *Nyssa biflora* / *Fraxinus caroliniana* / *Itea virginica* Forest
- Taxodium distichum* - *Fraxinus pennsylvanica* - *Quercus laurifolia* / *Acer rubrum* / *Saururus cernuus* Forest
- Liquidambar styraciflua* - *Quercus (nigra, phellos)* - *Pinus taeda* / *Vaccinium elliotii* - *Myrica cerifera* Forest
- Acer saccharinum* / *Leersia lenticularis* - *Commelina virginica* Forest
- Platanus occidentalis* - *Celtis laevigata* - *Fraxinus pennsylvanica* / *Lindera benzoin* - *Ilex decidua* / *Carex retroflexa* Forest
- Populus deltoides* / *Acer negundo* / *Boehmeria cylindrica* Forest
- Liquidambar styraciflua* - *Quercus nigra* - *Quercus laurifolia* / *Arundinaria gigantea* / *Carex abscondita* Forest
- Salix nigra* - *Fraxinus pennsylvanica* Forest
- Pinus palustris* - *Pinus taeda* / *Schizachyrium scoparium* Woodland
- Plantation Pine
- Successional Pine - Mixed Hardwood Upland Forest

Land Use

- Park Headquarters
- Miscellaneous Park Structures
- Road
- Parking
- Utility Line
- Active Field
- Abandoned Field
- Water