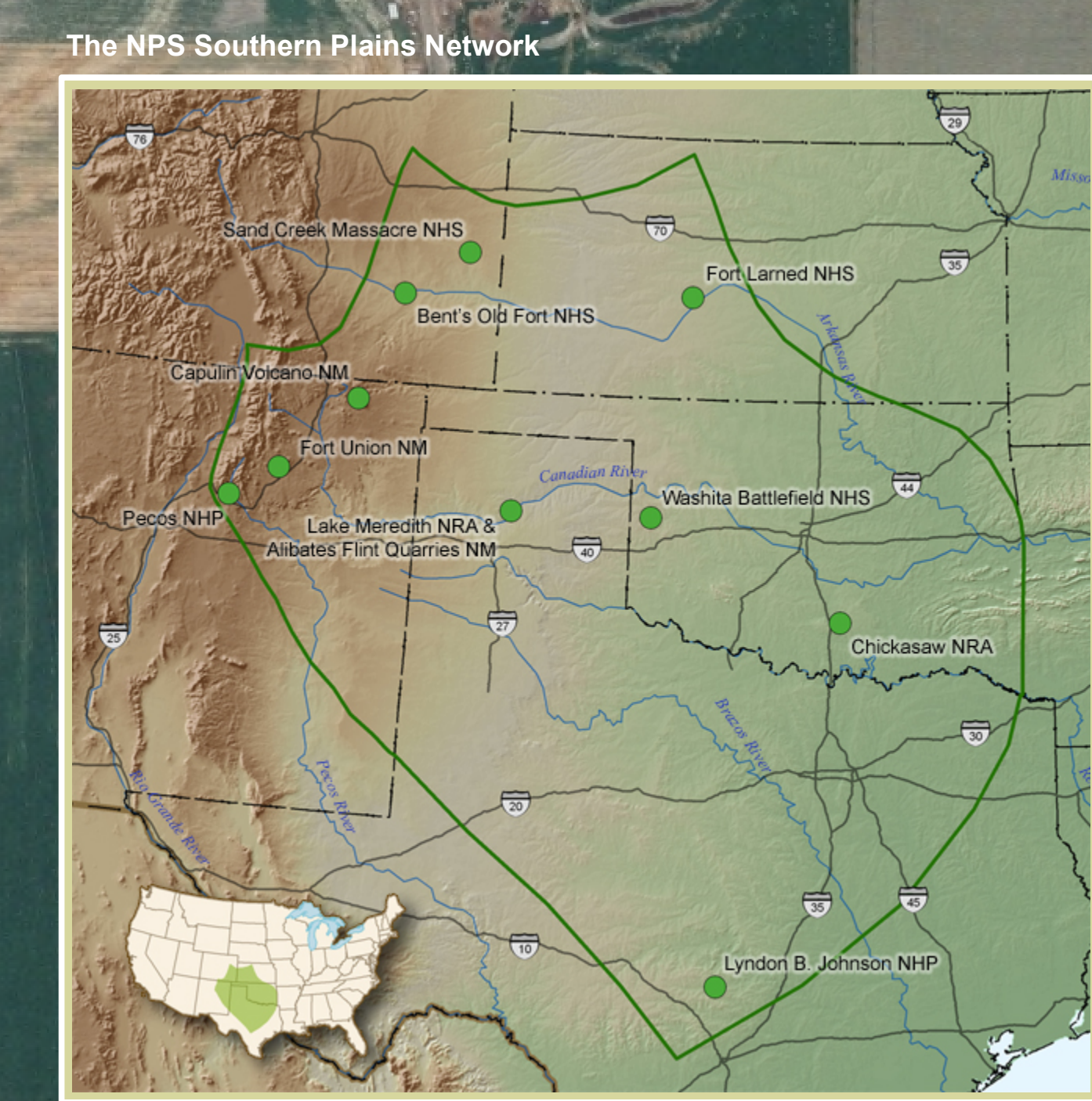
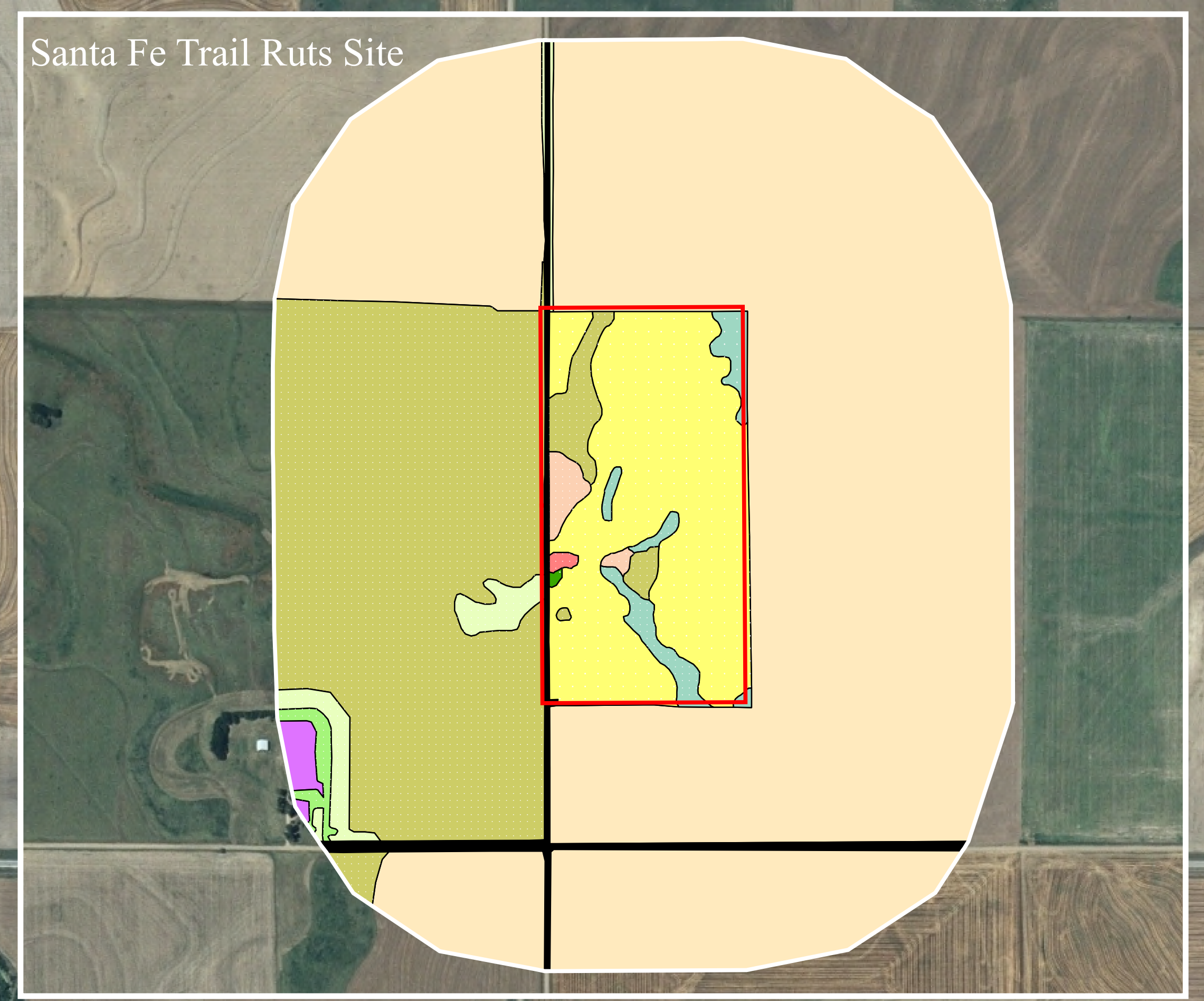
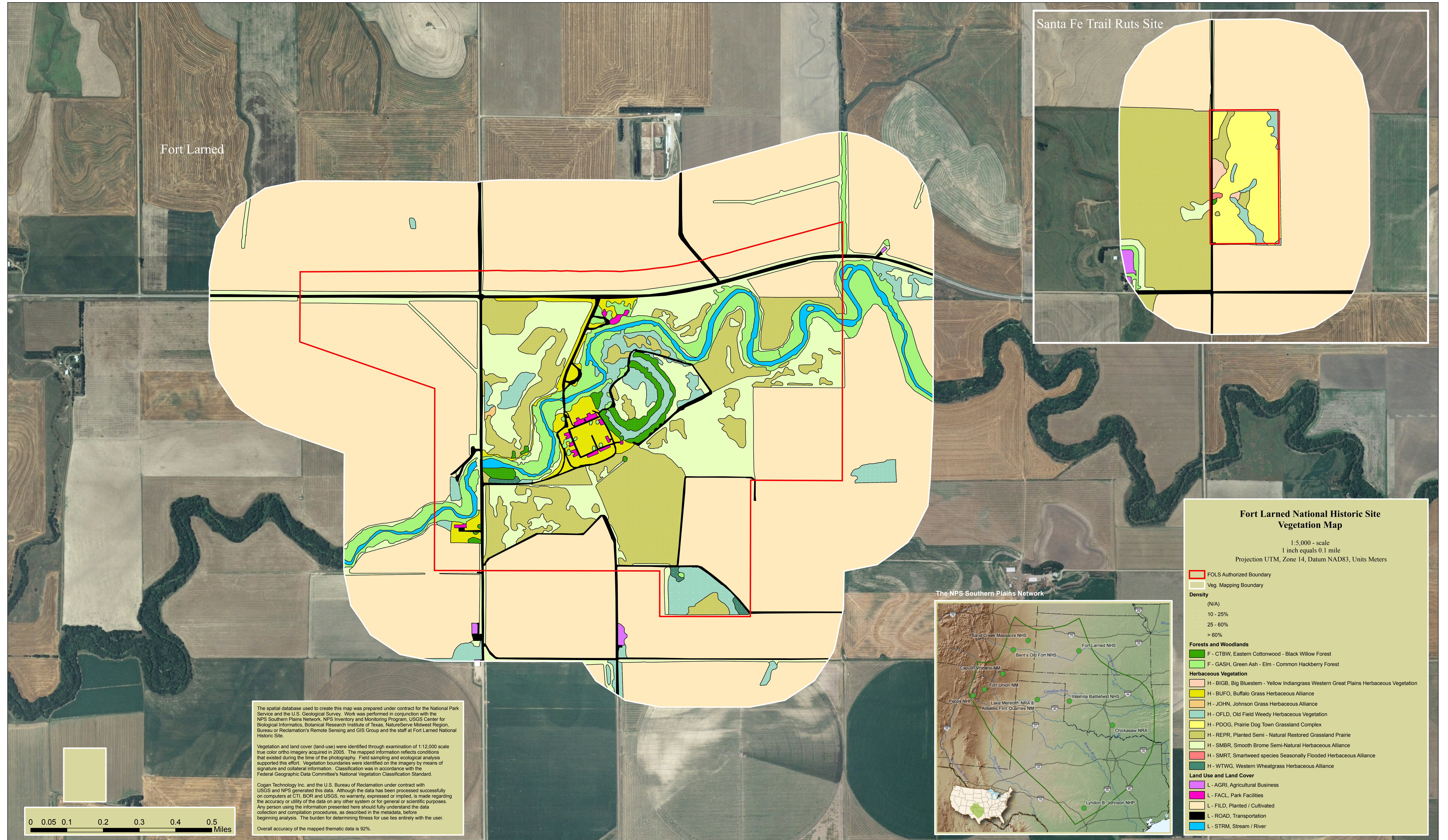
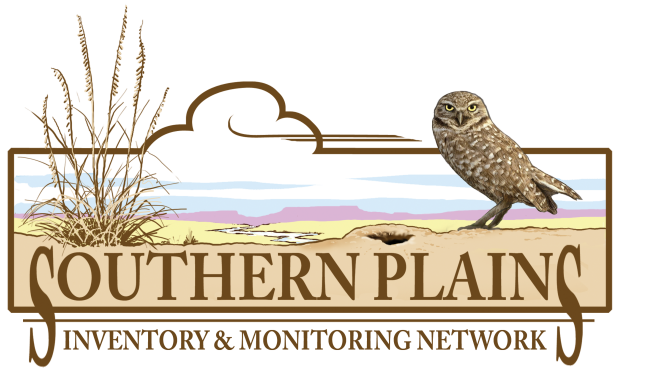




# Fort Larned National Historic Site

Larned, Kansas  
Vegetation Mapping Project



**Fort Larned National Historic Site  
Vegetation Map**

1:5,000 - scale  
1 inch equals 0.1 mile  
Projection UTM, Zone 14, Datum NAD83, Units Meters

- Red line: FOLS Authorized Boundary
- Yellow line: Veg. Mapping Boundary

**Density (NIA)**

- 10 - 25%
- 25 - 60%
- > 60%

**Forests and Woodlands**

- F - CTBW, Eastern Cottonwood - Black Willow Forest
- F - GASH, Green Ash - Elm - Common Hackberry Forest

**Herbaceous Vegetation**

- H - BIGB, Big Bluestem - Yellow Indiangrass Western Great Plains Herbaceous Vegetation
- H - BUFO, Buffalo Grass Herbaceous Alliance
- H - JOHN, Johnson Grass Herbaceous Alliance
- H - OFLD, Old Field Weedy Herbaceous Vegetation
- H - PDG, Prairie Dog Town Grassland Complex
- H - REPR, Planted Semi - Natural Restored Grassland Prairie
- H - SMBR, Smooth Brome Semi-Natural Herbaceous Alliance
- H - SMRT, Smartweed species Seasonally Flooded Herbaceous Alliance
- H - WTWG, Western Wheatgrass Herbaceous Alliance

**Land Use and Land Cover**

- L - AGRI, Agricultural Business
- L - FACI, Park Facilities
- L - FILD, Planted / Cultivated
- L - ROAD, Transportation
- L - STRM, Stream / River

The spatial database used to create this map was prepared under contract for the National Park Service and the U.S. Geological Survey. Work was performed in conjunction with the NPS Southern Plains Network, NPS Inventory and Monitoring Program, USGS Center for Biological Informatics, Botanical Research Institute of Texas, NatureServe Midwest Region, Bureau of Reclamation's Remote Sensing and GIS Group and the staff at Fort Larned National Historic Site.

Vegetation and land cover (land-use) were identified through examination of 1:12,000 scale true color ortho imagery acquired in 2005. The mapped information reflects conditions that existed during the time of the photography. Field sampling and ecological analysis supported this effort. Vegetation boundaries were identified on the imagery by means of signature and collateral information. Classification was in accordance with the Federal Geographic Data Committee's National Vegetation Classification Standard.

Cogan Technology Inc. and the U.S. Bureau of Reclamation under contract with USGS and NPS generated this data. Although the data has been processed successfully on computers at CTI, BOR and USGS, no warranty, expressed or implied, is made regarding the accuracy or utility of the data on any other system or for general or scientific purposes. Any person using the information presented here should fully understand the data collection and compilation procedures, as described in the metadata, before beginning analysis. The burden for determining fitness for use lies entirely with the user.

Overall accuracy of the mapped thematic data is 92%.

