



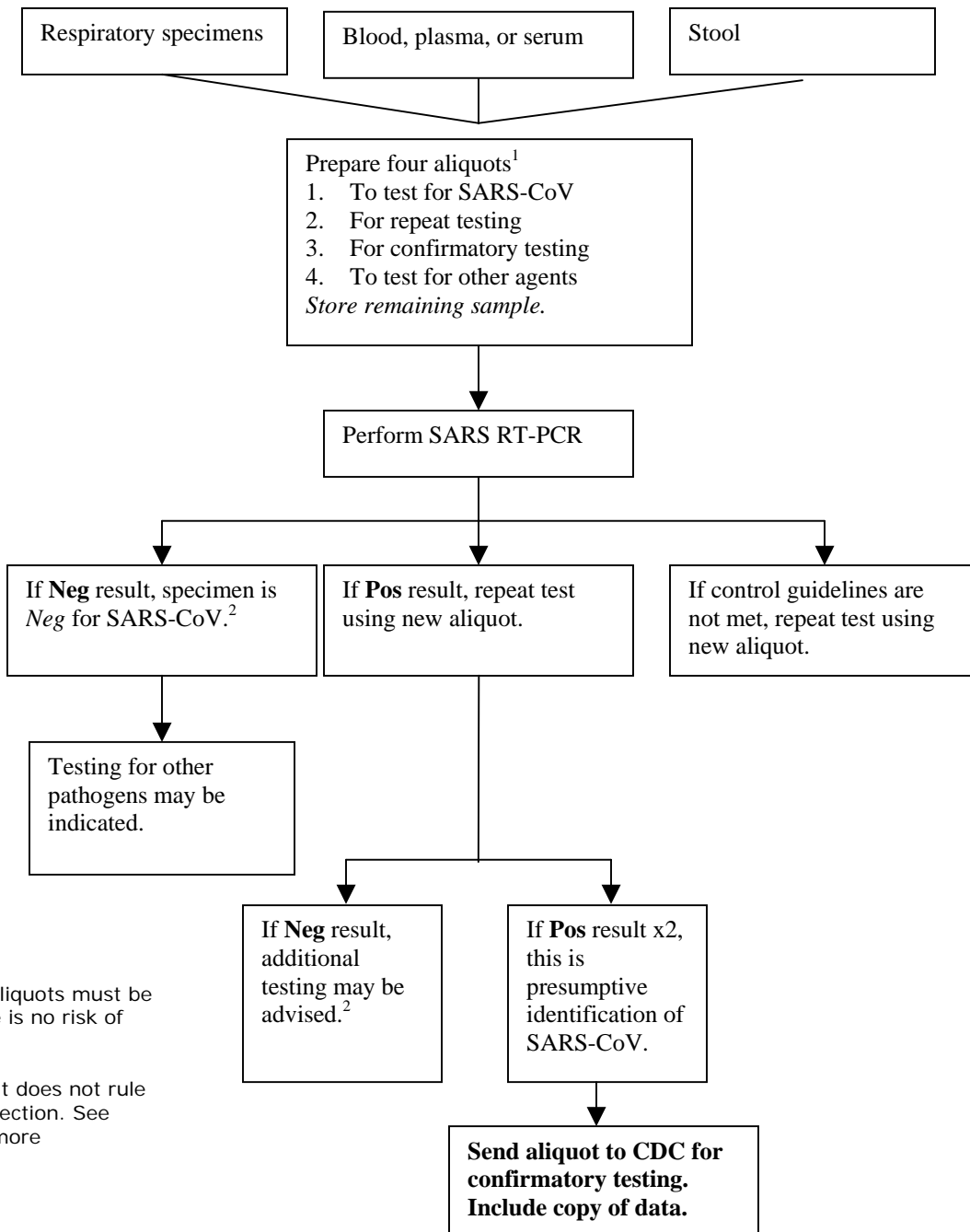
# SEVERE ACUTE RESPIRATORY SYNDROME

Public Health Guidance for Community-Level Preparedness and Response to Severe Acute Respiratory Syndrome (SARS) Version 2

## Supplement F: Laboratory Guidance

### Appendix F2

#### SARS-CoV Specimen Testing Guidelines: RT-PCR Testing



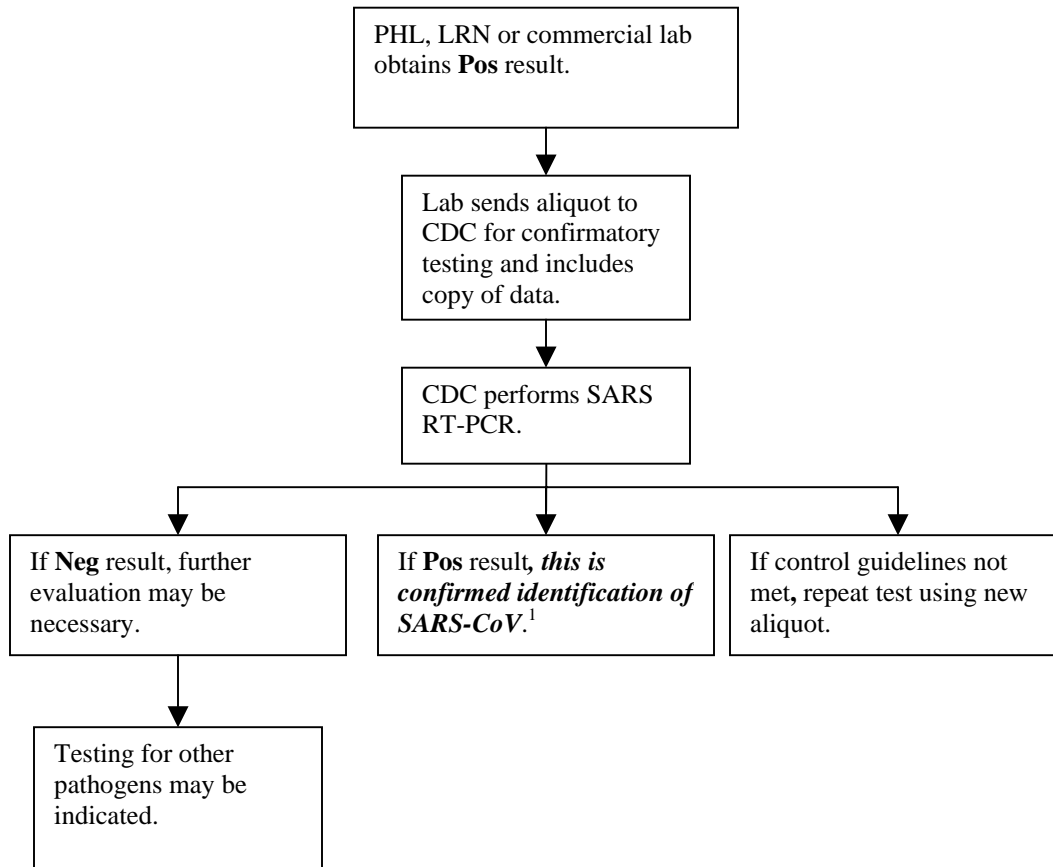
<sup>1</sup> Preparation of aliquots must be done where there is no risk of contamination.

<sup>2</sup> A negative result does not rule out SARS-CoV infection. See Appendix F7 for more information.

## SARS-CoV Specimen Testing Guidelines: RT-PCR Testing

(continued from previous page)

### RT-PCR Confirmatory Testing

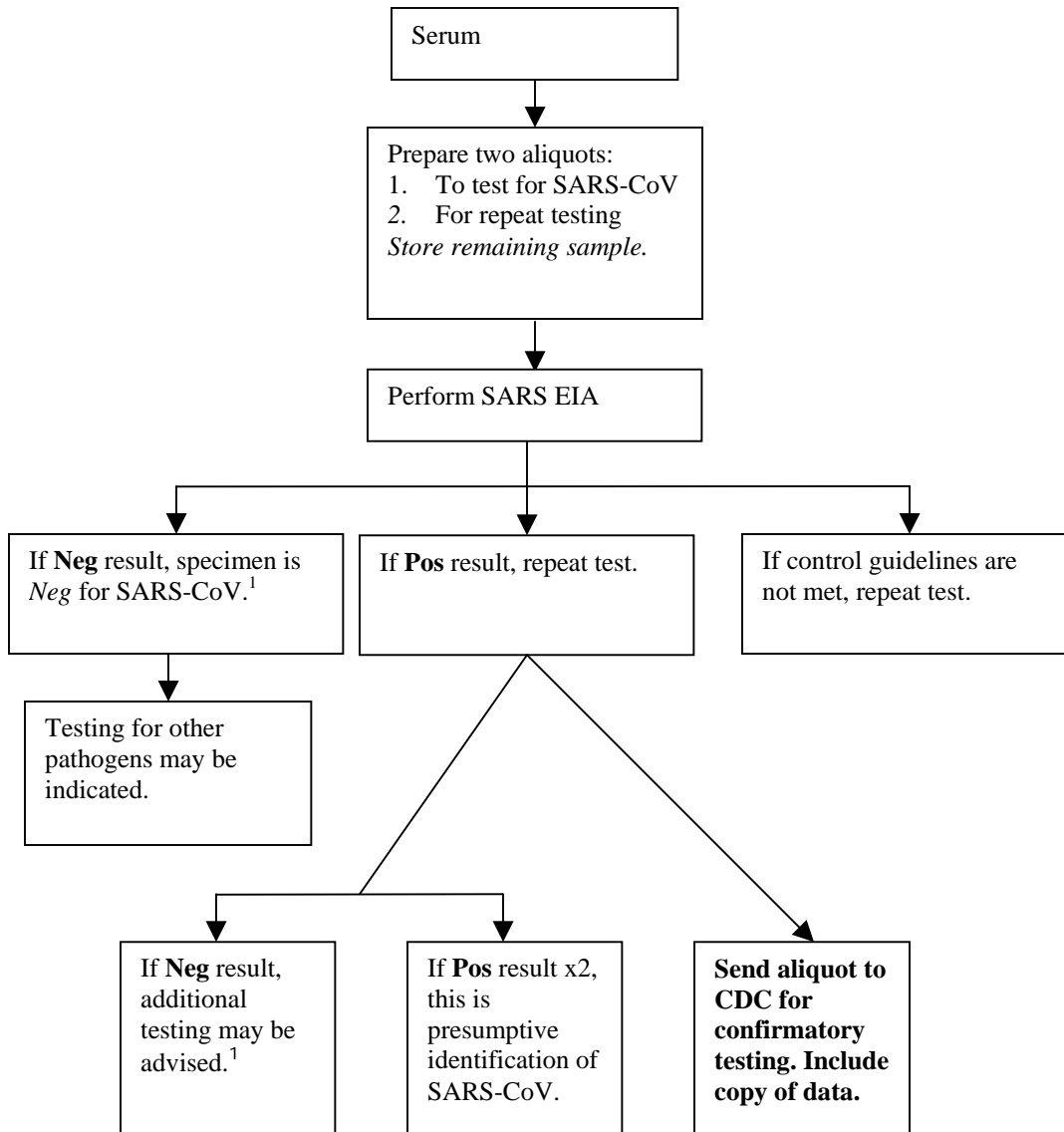


<sup>1</sup> Confirmed identification of SARS-CoV in a single clinical specimen is not equivalent to laboratory confirmation of SARS-CoV infection in a patient. To be confident that a PCR-positive specimen indicates infection in the patient, a second specimen should be confirmed positive. For more information on the criteria for diagnosing SARS-CoV infection, see Appendix F8.

### SARS-CoV Specimen Testing Guidelines: RT-PCR Testing

(continued from previous page)

### SARS-CoV Specimen Testing Guidelines: Serologic Testing

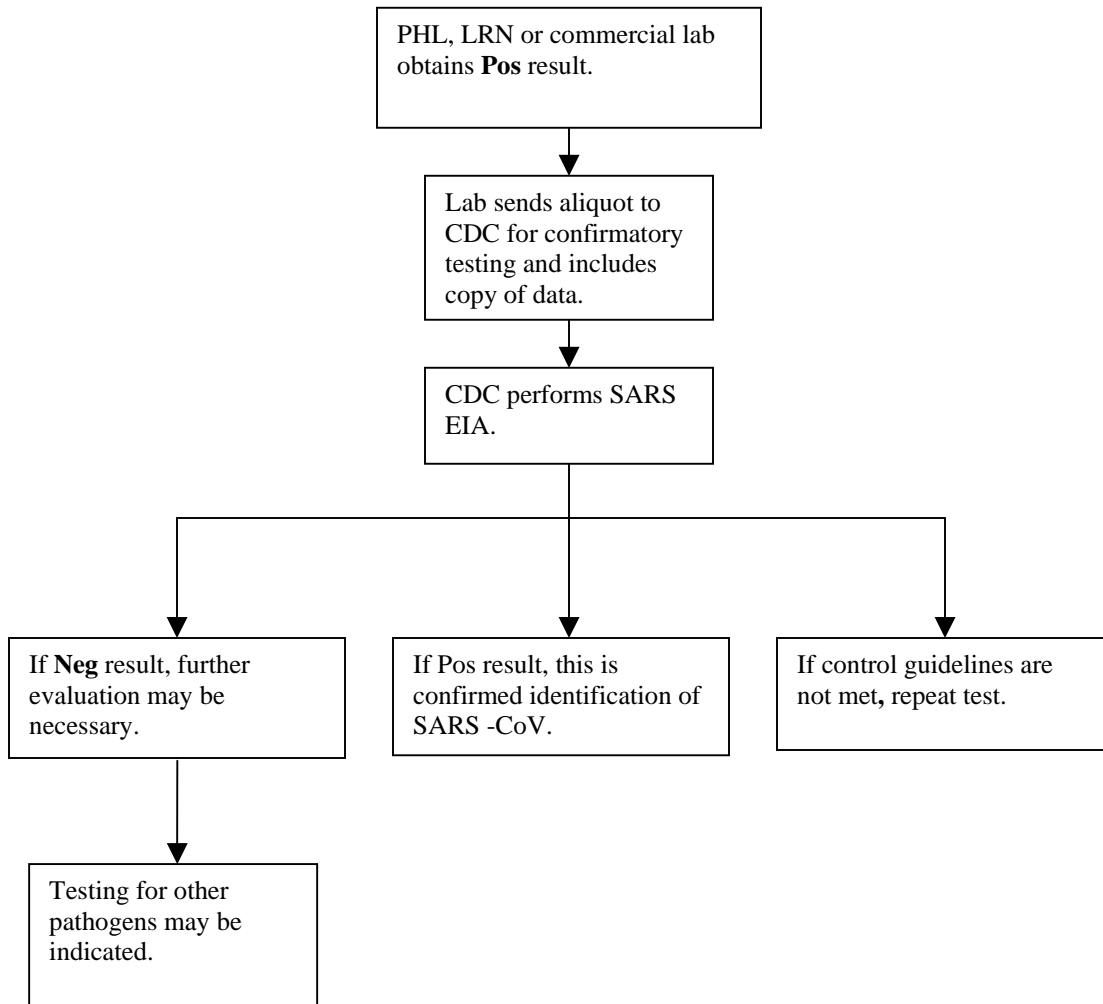


<sup>1</sup> A negative result does not rule out SARS-CoV infection. See Appendix F7 for more information.

## SARS-CoV Specimen Testing Guidelines: RT-PCR Testing

(continued from previous page)

### Serologic Confirmatory Testing



For more information, visit [www.cdc.gov/ncidod/sars](http://www.cdc.gov/ncidod/sars) or call the CDC public response hotline at (888) 246-2675 (English), (888) 246-2857 (Español), or (866) 874-2646 (TTY)