

Berkeley Lab Accident Statistics Through July 31, 2009

These slides are updated on a monthly basis, as soon as data are reasonably final for the preceding month. Hours worked are estimated monthly and updated with final and actual values quarterly.

While every effort is made to present accurate and final data, data may change in subsequent months, as additional information becomes available and as later developments change the recordability of some cases.

Refer questions about these charts to rwwfisher@lbl.gov

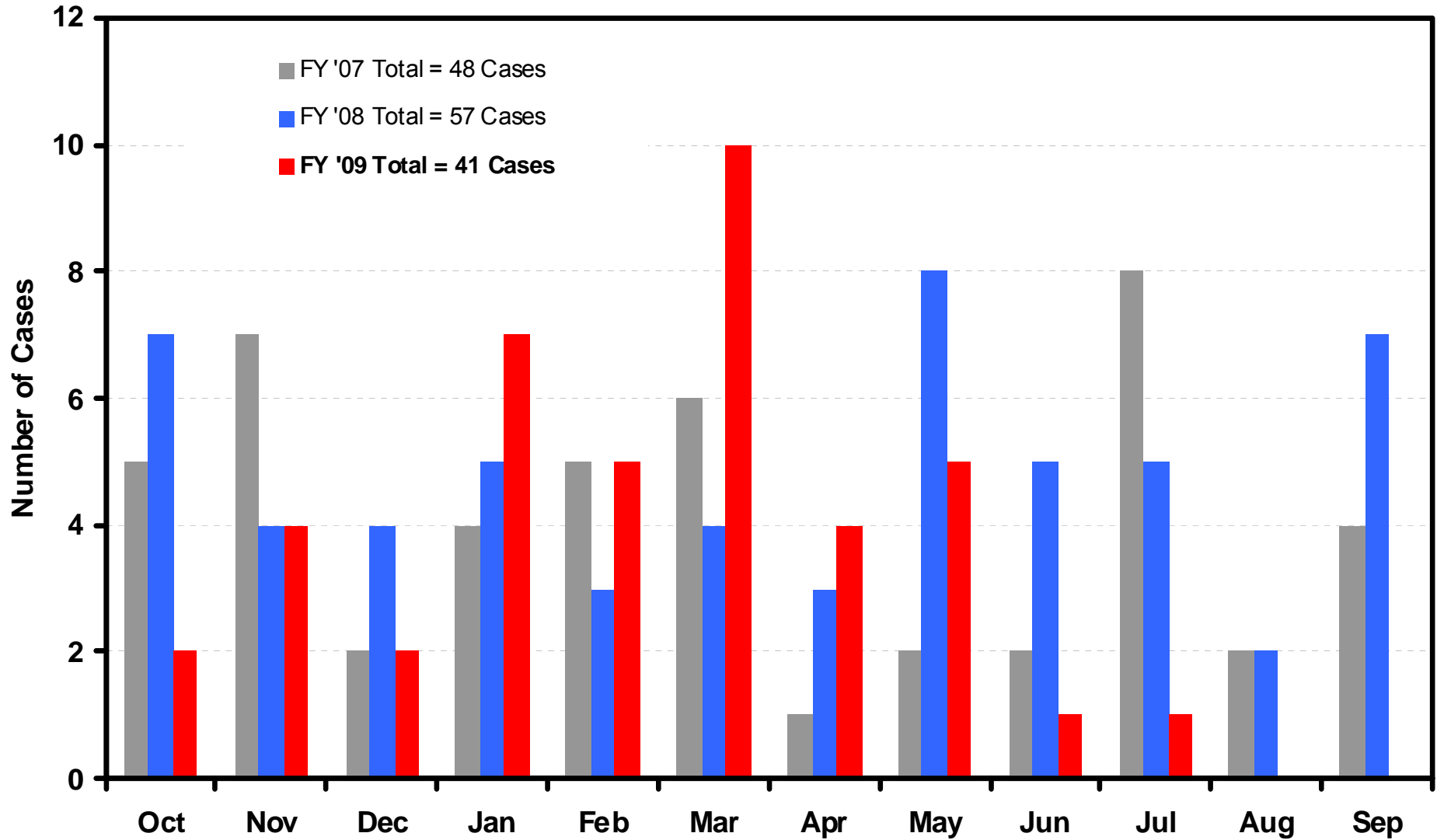
Narrative of July 2009 Recordable Injury Cases

- Graduate Student Research Assistant – Chemical Splash to Eye
 - While attempting to lift a wash bottle by the stem/cap from within a fume hood, the cap separated from the container and liquid contents splashed out. A drop of the fluid splashed in the employee's eye. Safety glasses were worn (and gloves) but were not as protective as chemical splash goggles against liquid exposure.

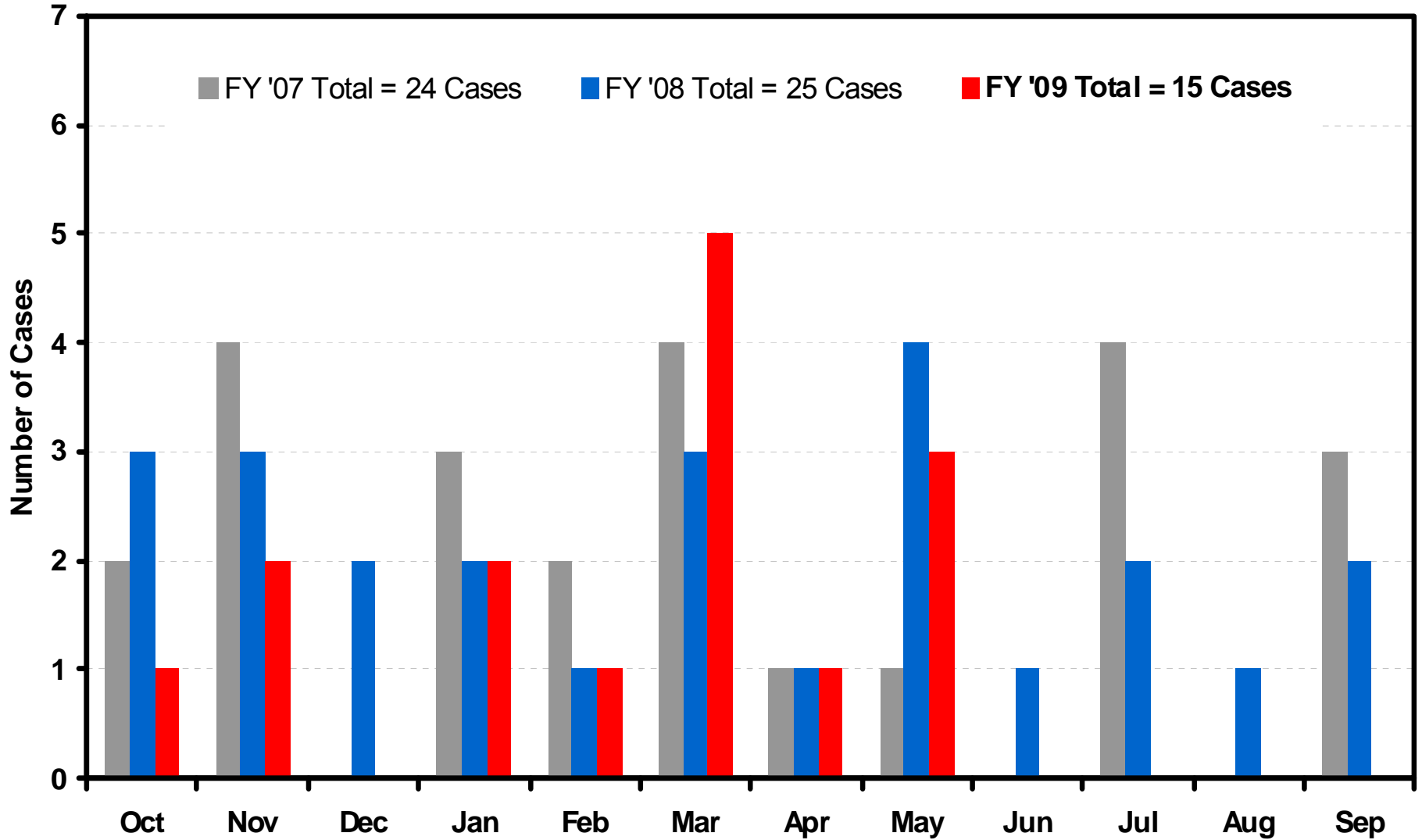
Narrative of July 2009 Recordable Injury Cases

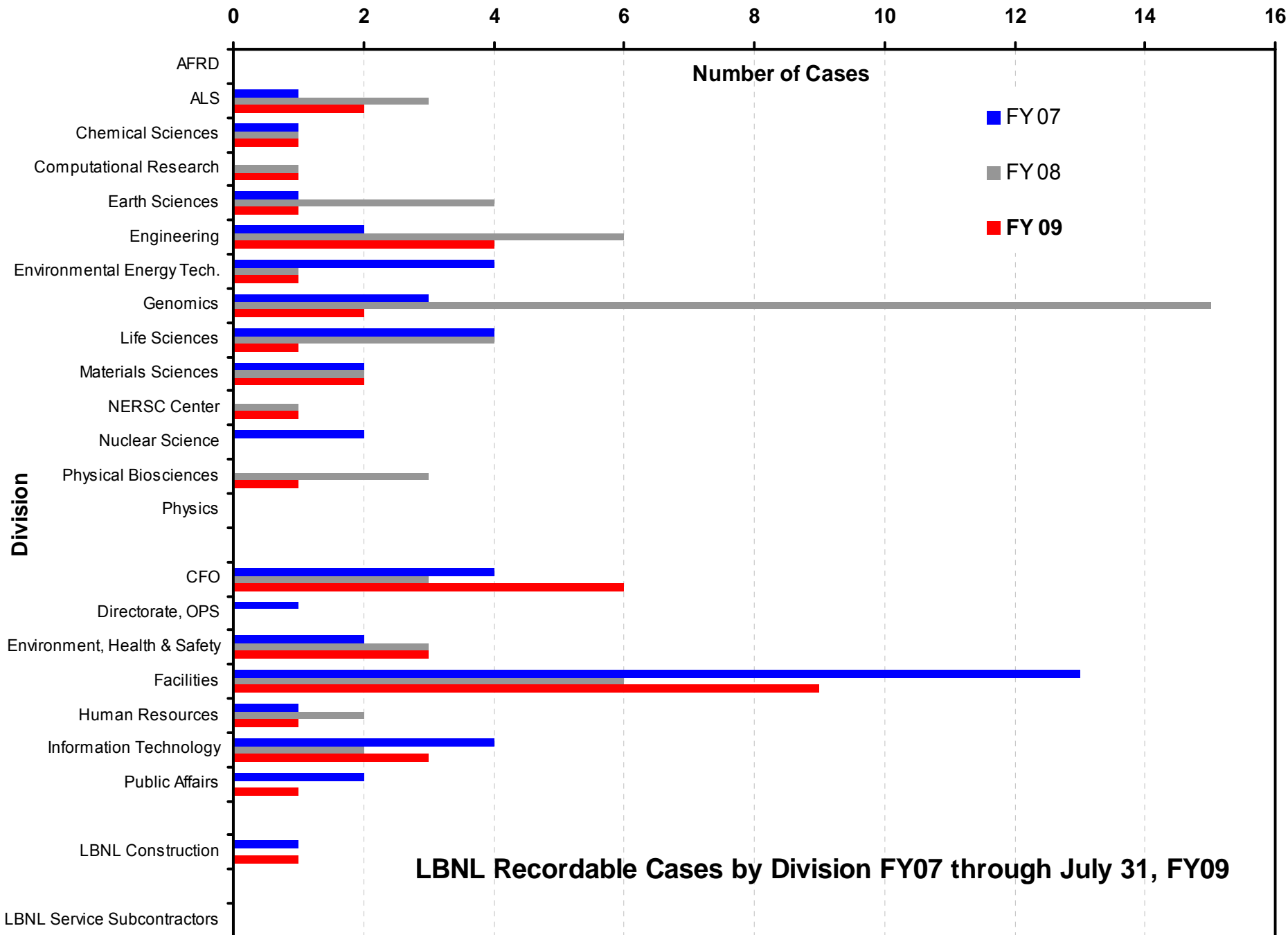
- Human Resources Planner
 - Employee experienced pain in the left wrist and hand after using keyboard and mouse. Ergonomic intervention was engaged in April for this case. However, in July after minimal recovery from this injury, this case became recordable due to administration of physical therapy.

LBNL Recordable Cases FY07 through July 31, FY09

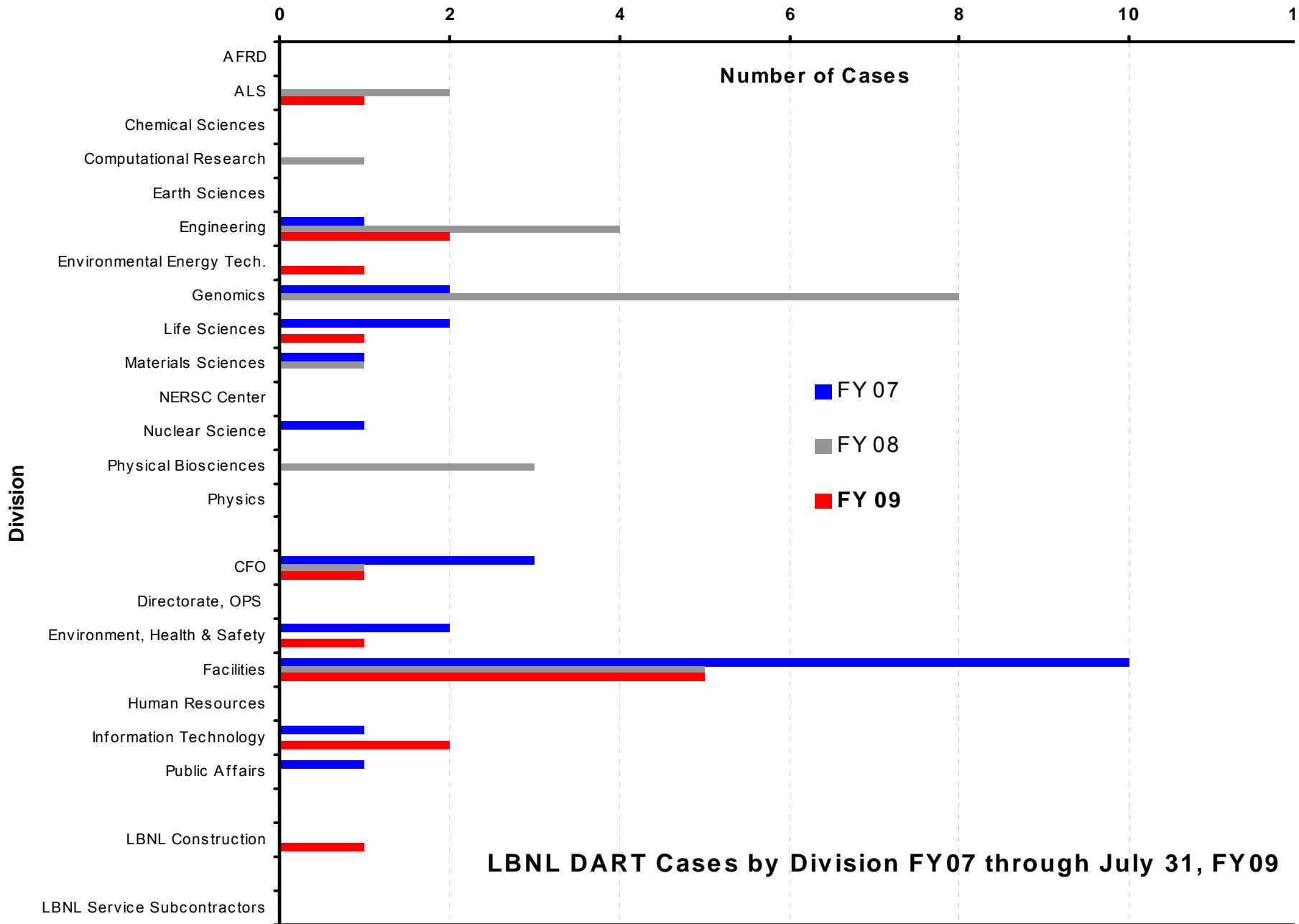


LBNL DART Cases FY07 through July 31, FY09





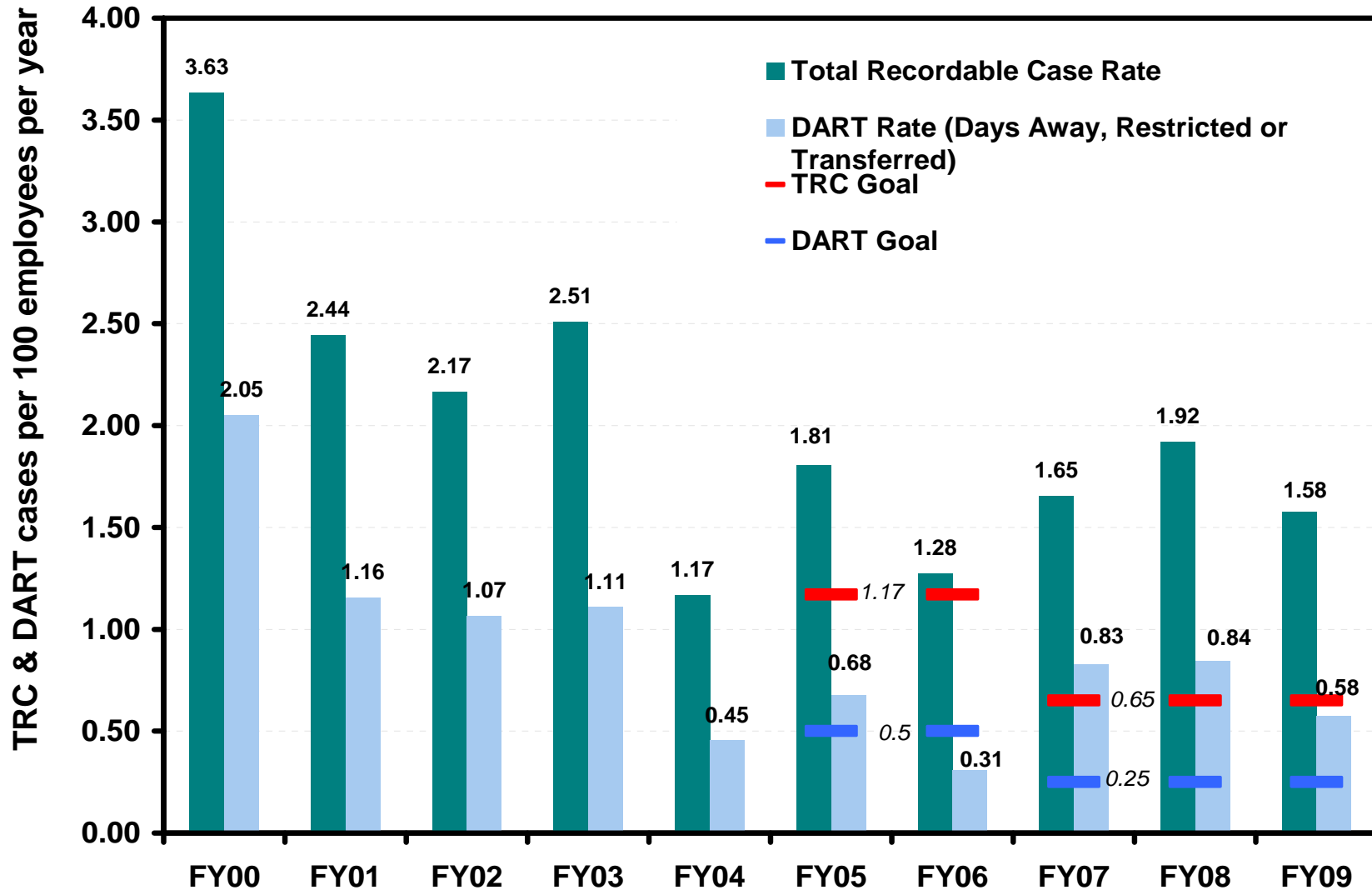
LBNL Recordable Cases by Division FY07 through July 31, FY09



Berkeley Lab Site-Wide TRC & DART Rates

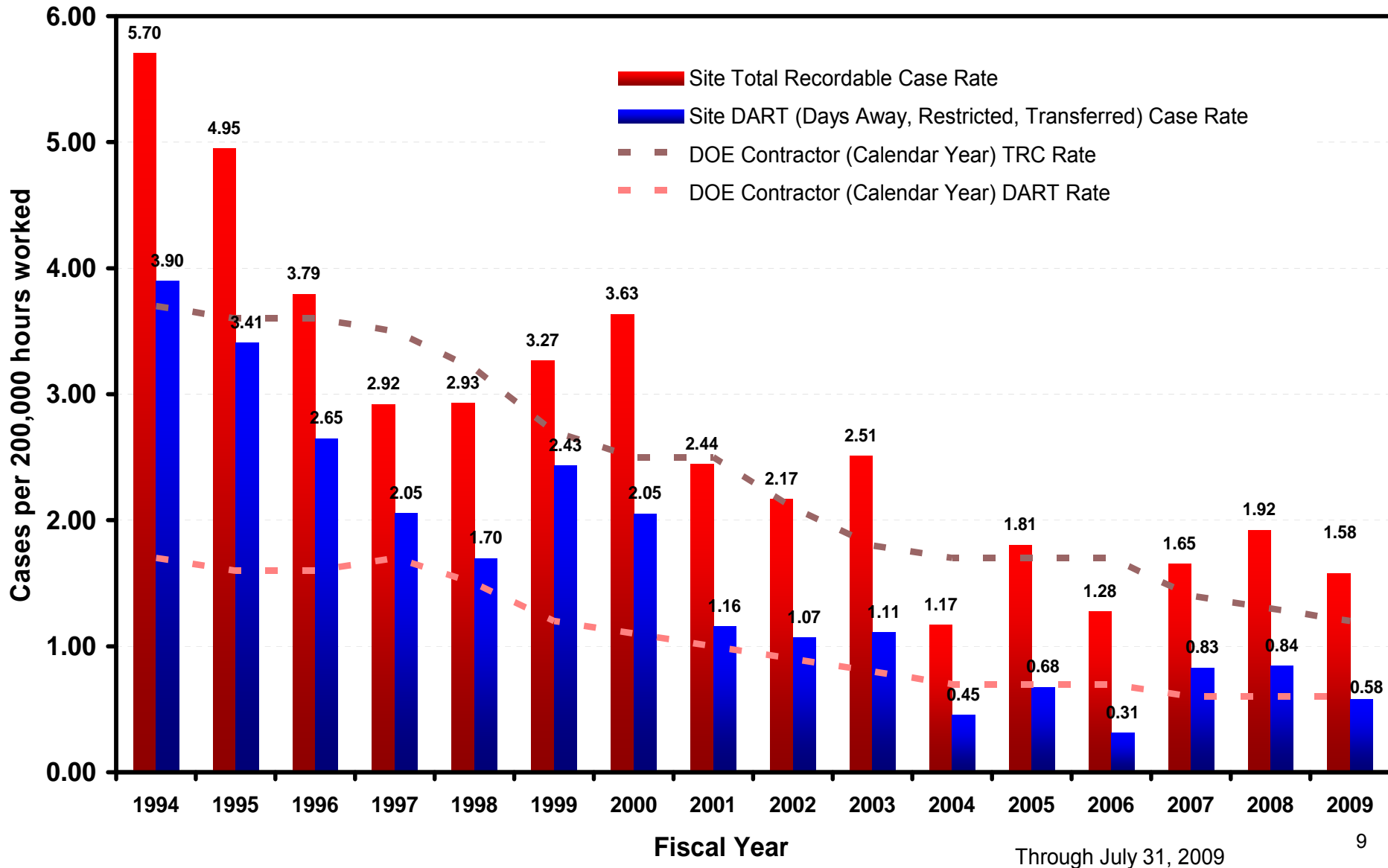
(Includes all Construction and Service Contractors)

Through July 31, 2009



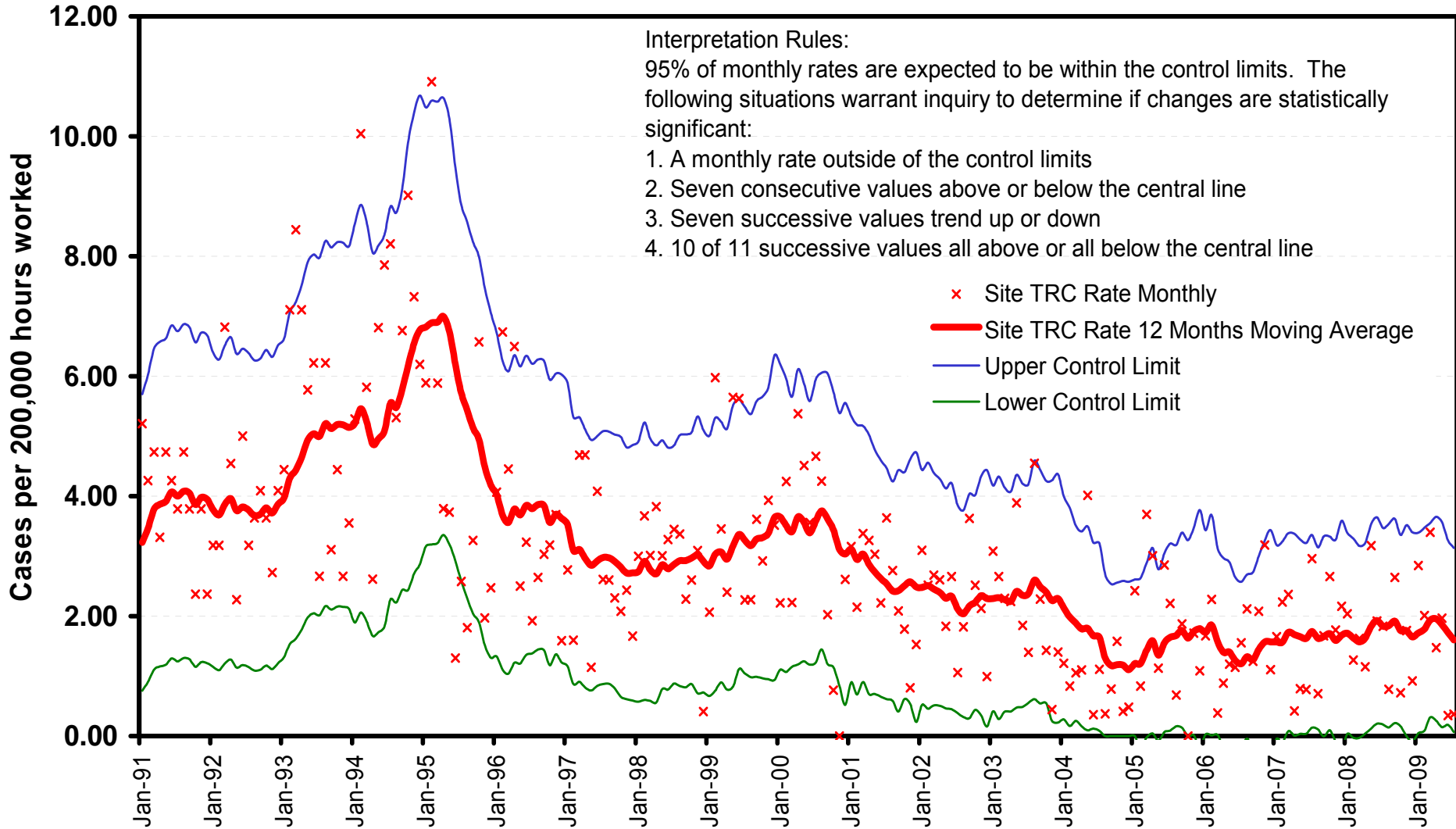
LBNL vs DOE Contractor Rates

Berkeley Lab Site Accident Rates



Long Term Injury Rates - TRC

Berkeley Lab Total Recordable Case Rates With Control Limits At 95% Confidence Level

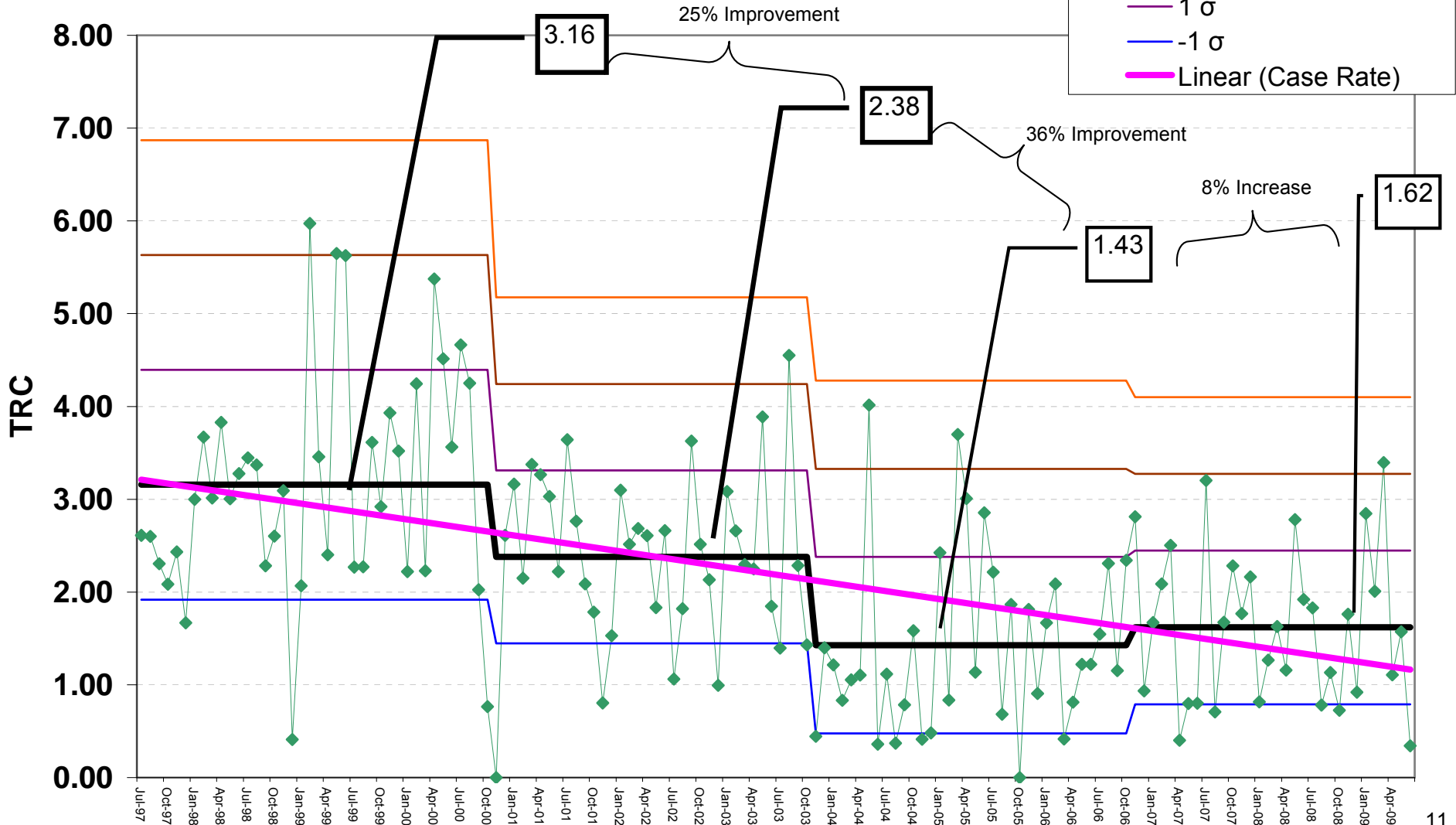
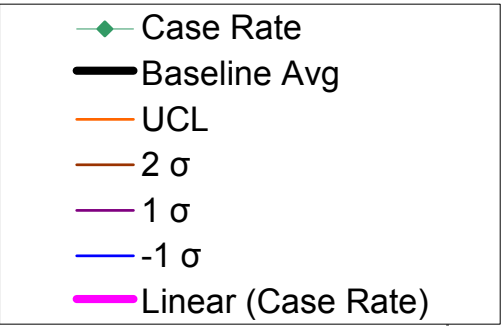


Through July 31, 2009

Long Term Injury Rates

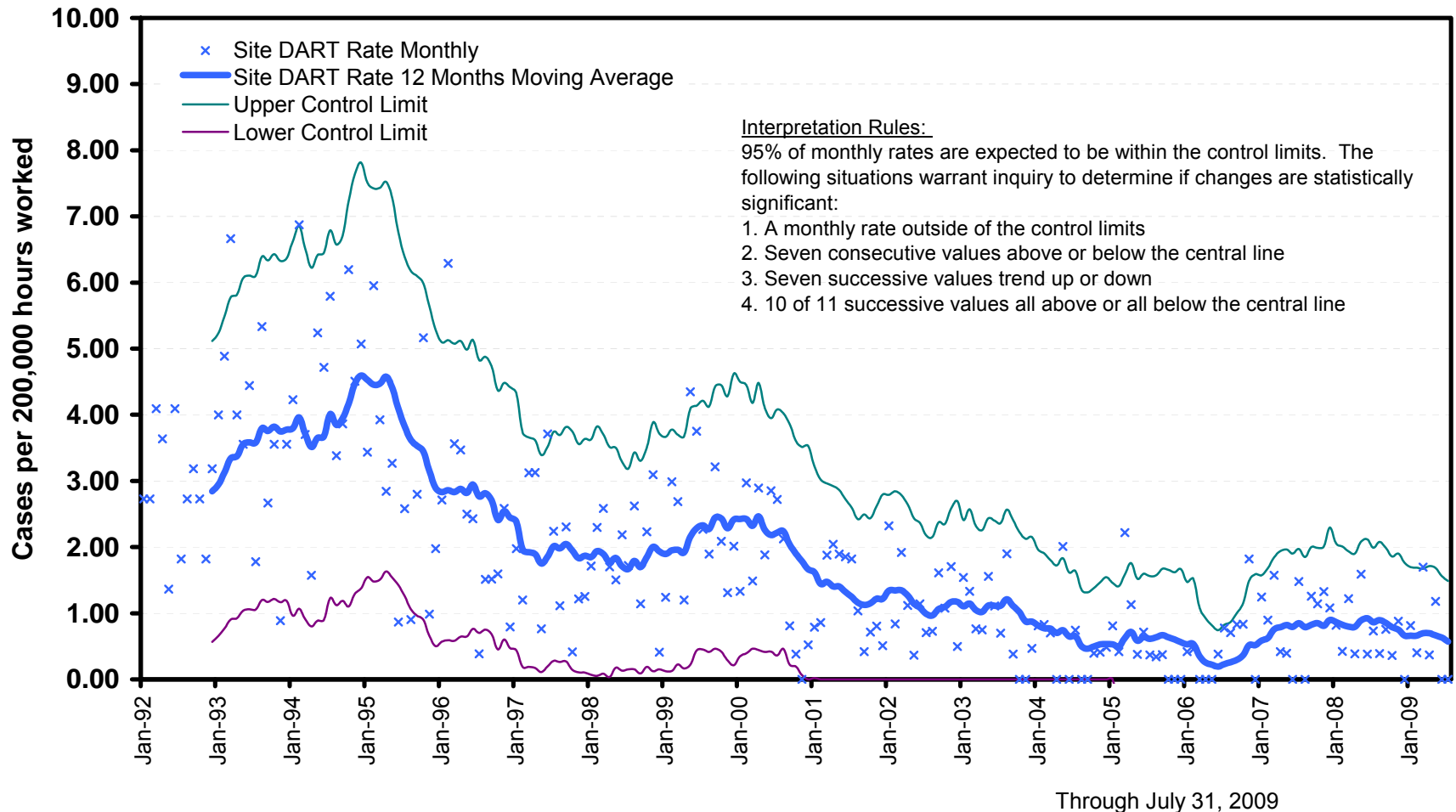
TRC Jul 97 to June 09

Triennial Baseline



Long Term Injury Rates - DART

Berkeley Lab DART Rates With Control Limits At 95% Confidence Level
(Cases with Days Away, Restricted or Transferred)

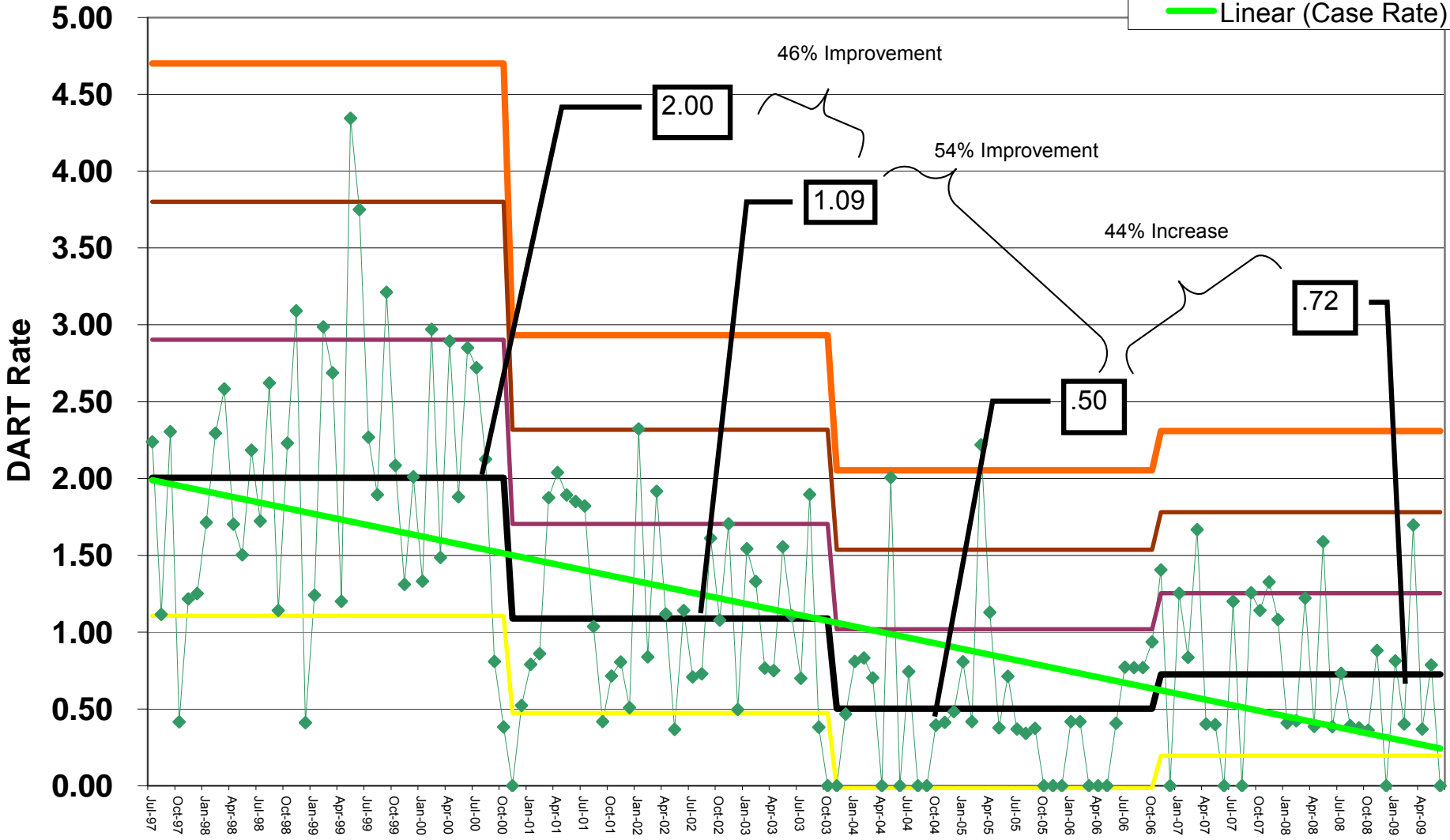


Long Term Injury Rates

DART Rates Jul 97 to June 09

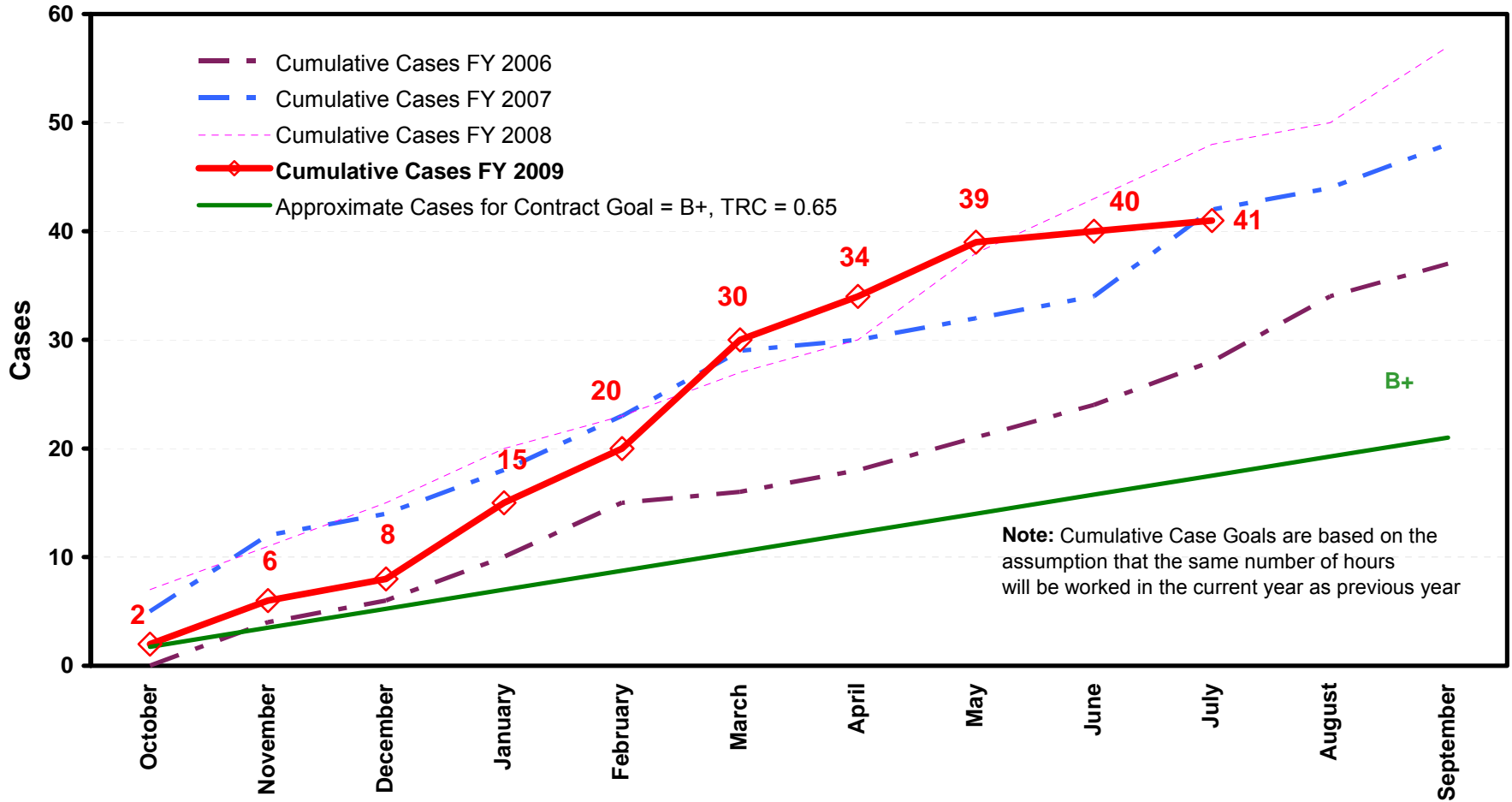
Triennial Baseline

- ◆ Case Rate
- Baseline Avg
- UCL
- 2 σ
- 1 σ
- -1 σ
- Linear (Case Rate)



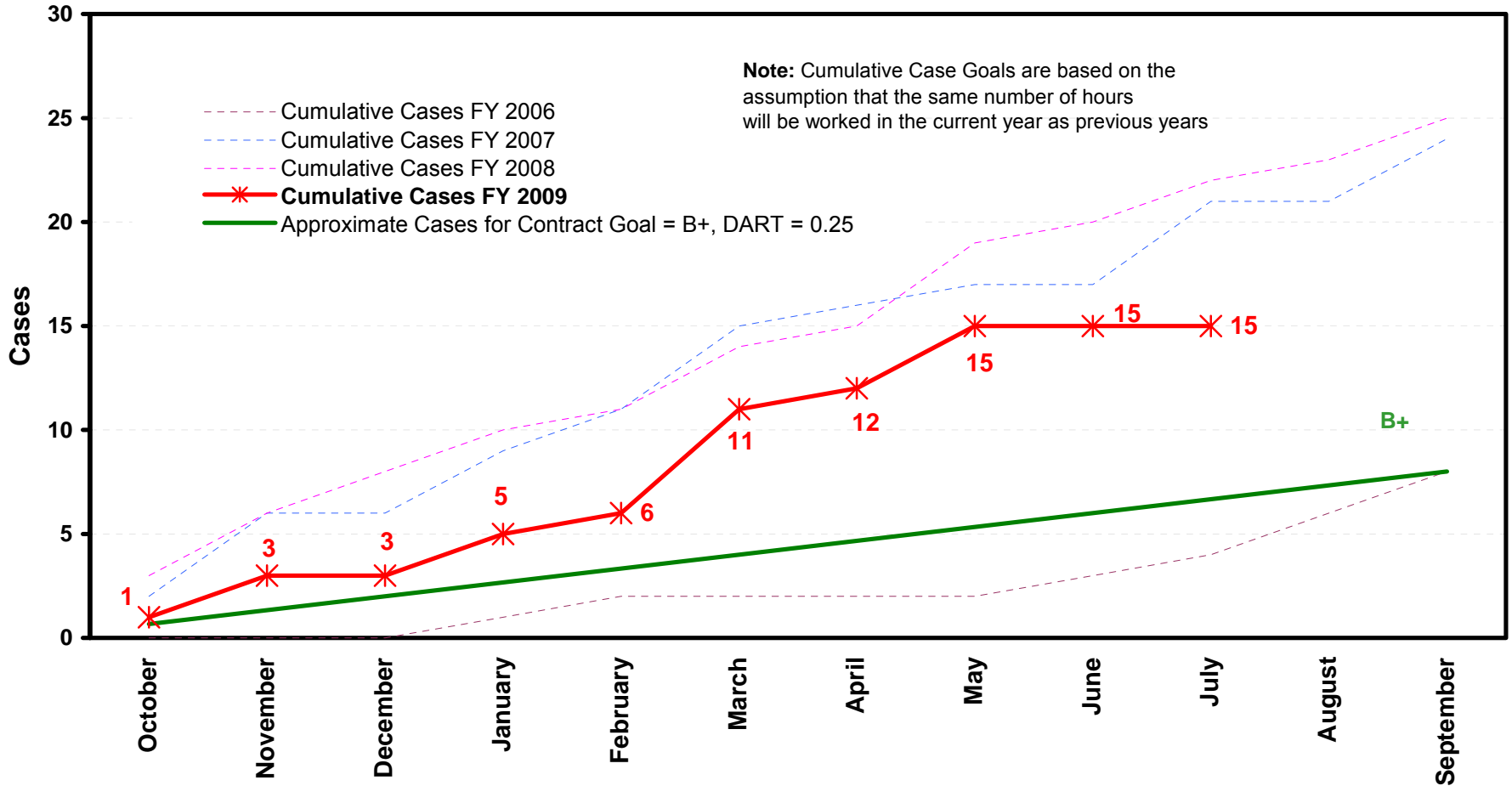
Performance vs Contract Goals - TRC

Berkeley Lab and Contractors
Cumulative Total Recordable Cases
By Fiscal Year

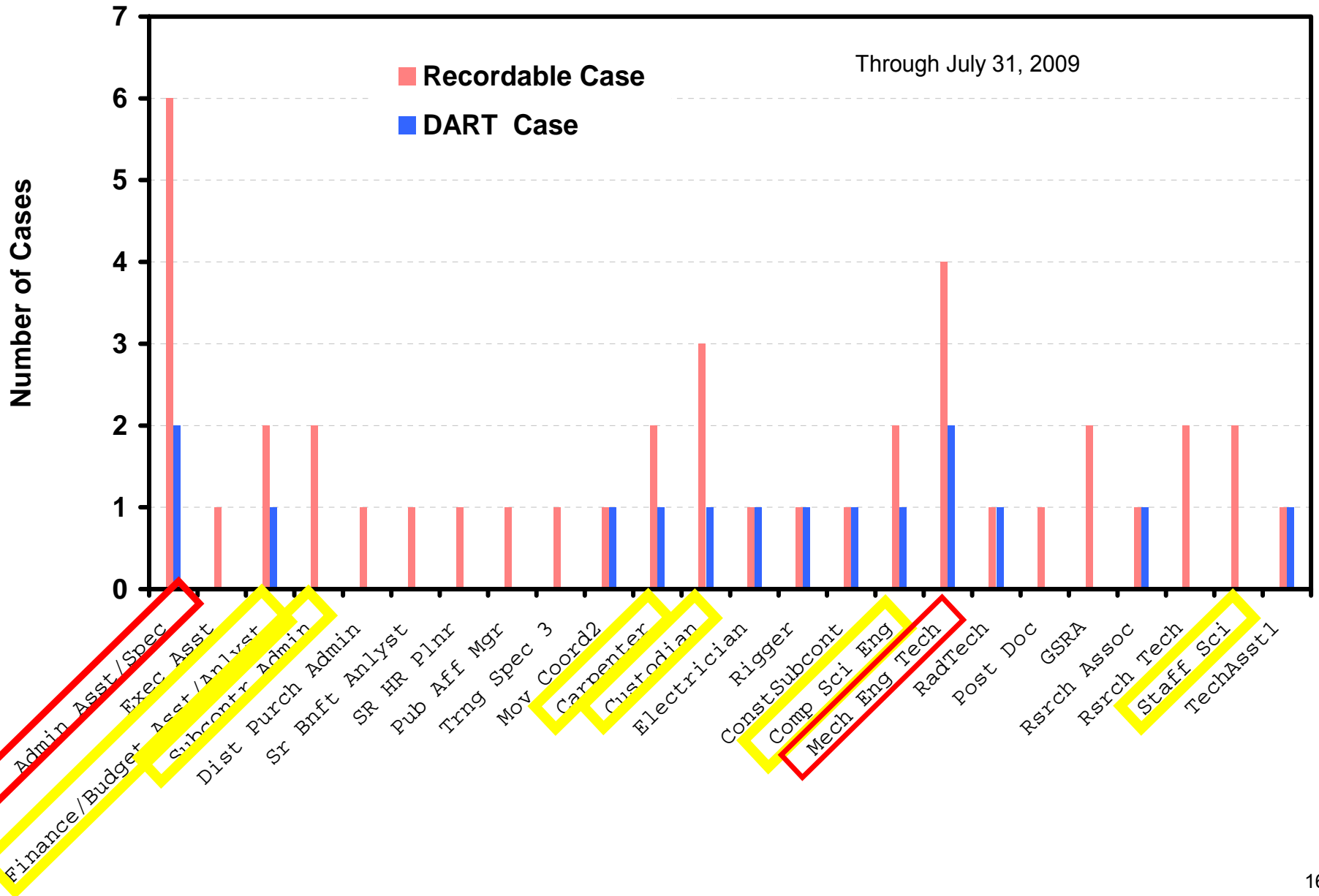


Performance vs Contract Goals - DART

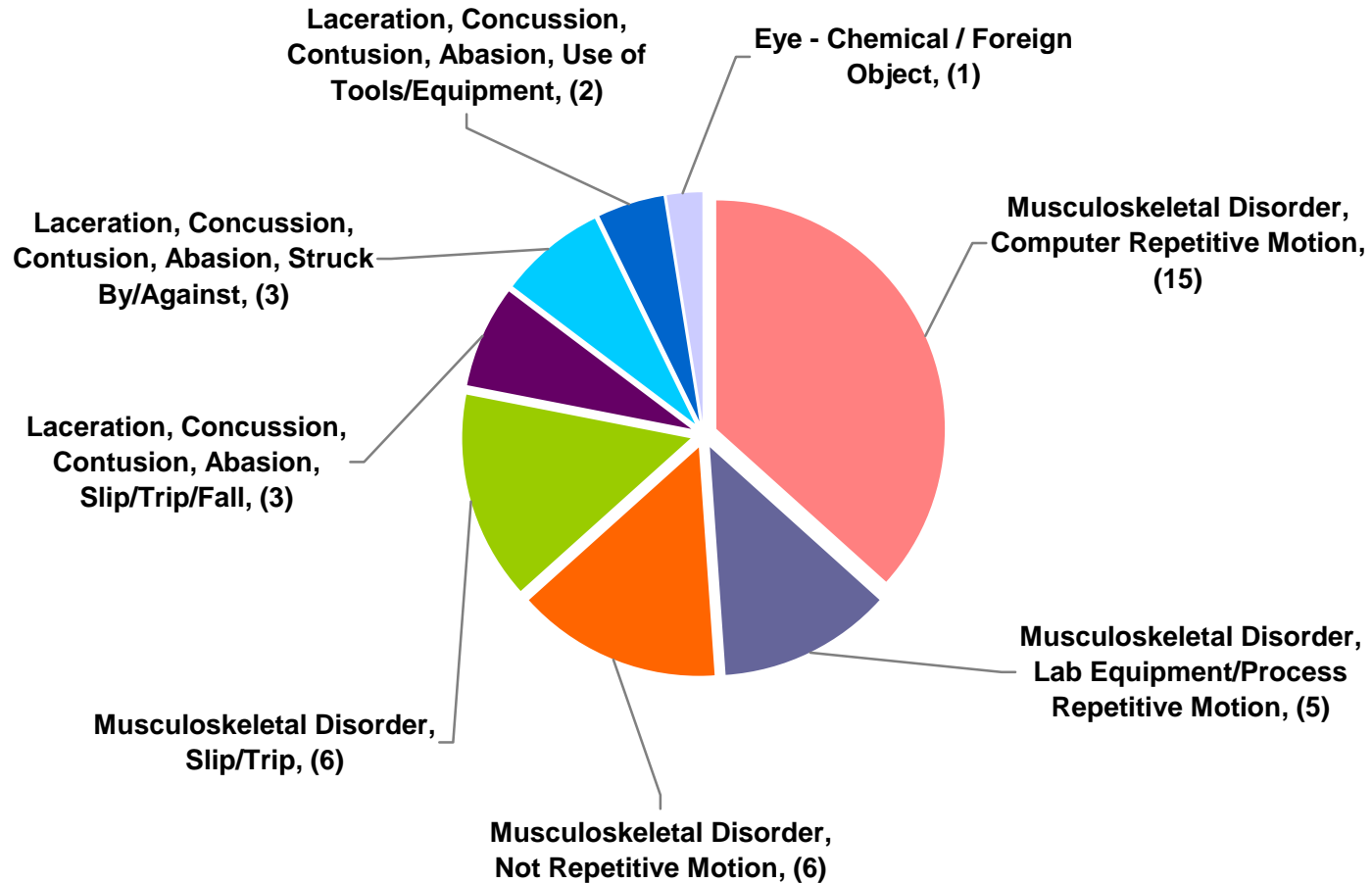
Berkeley Lab and Contractors
 Cumulative DART (Days Away, Restricted, Transferred) Cases
 By Fiscal Year



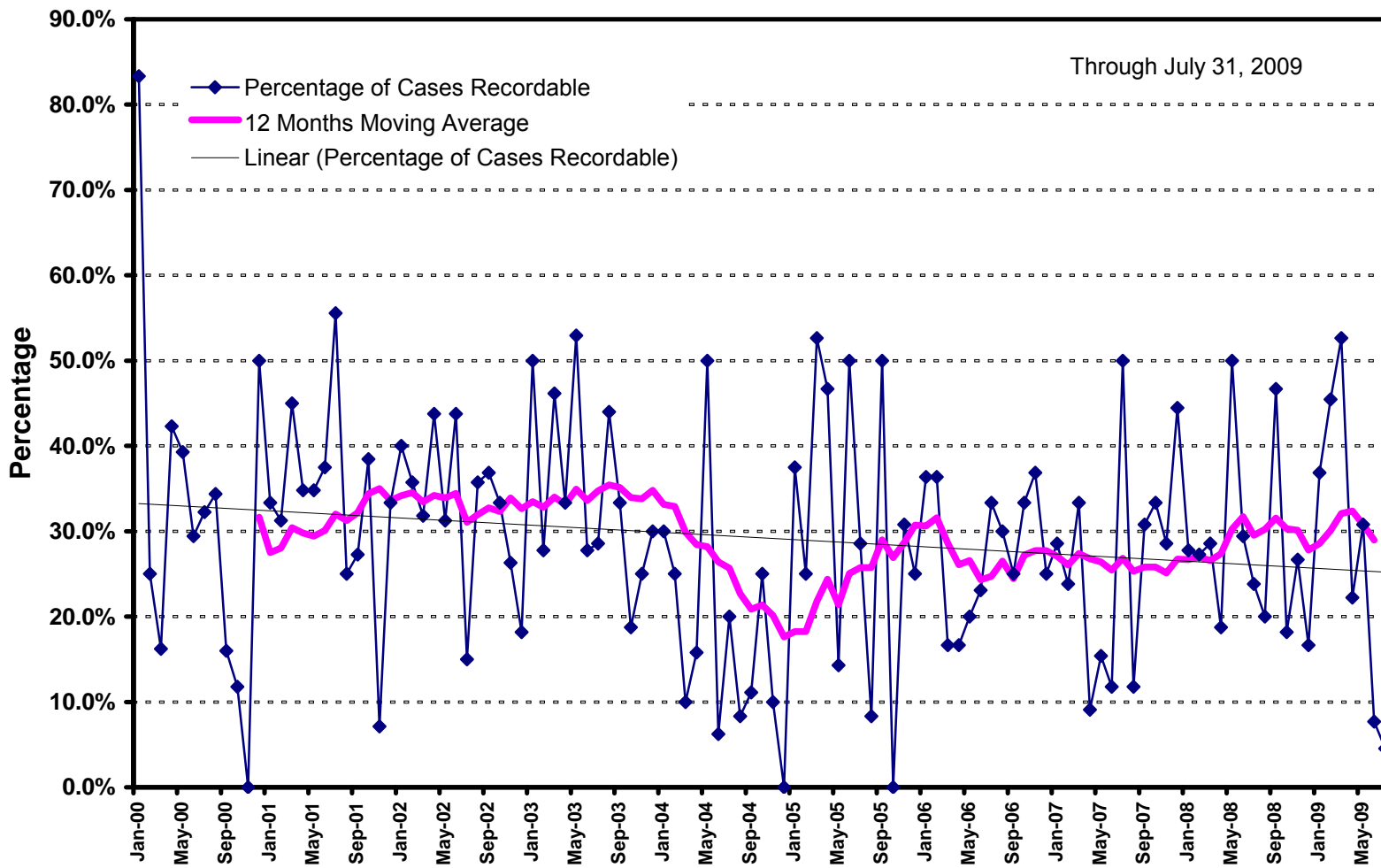
Recordable and DART Cases by Job Classification



Injury Categories and Causes FY08 through July 31, 2009

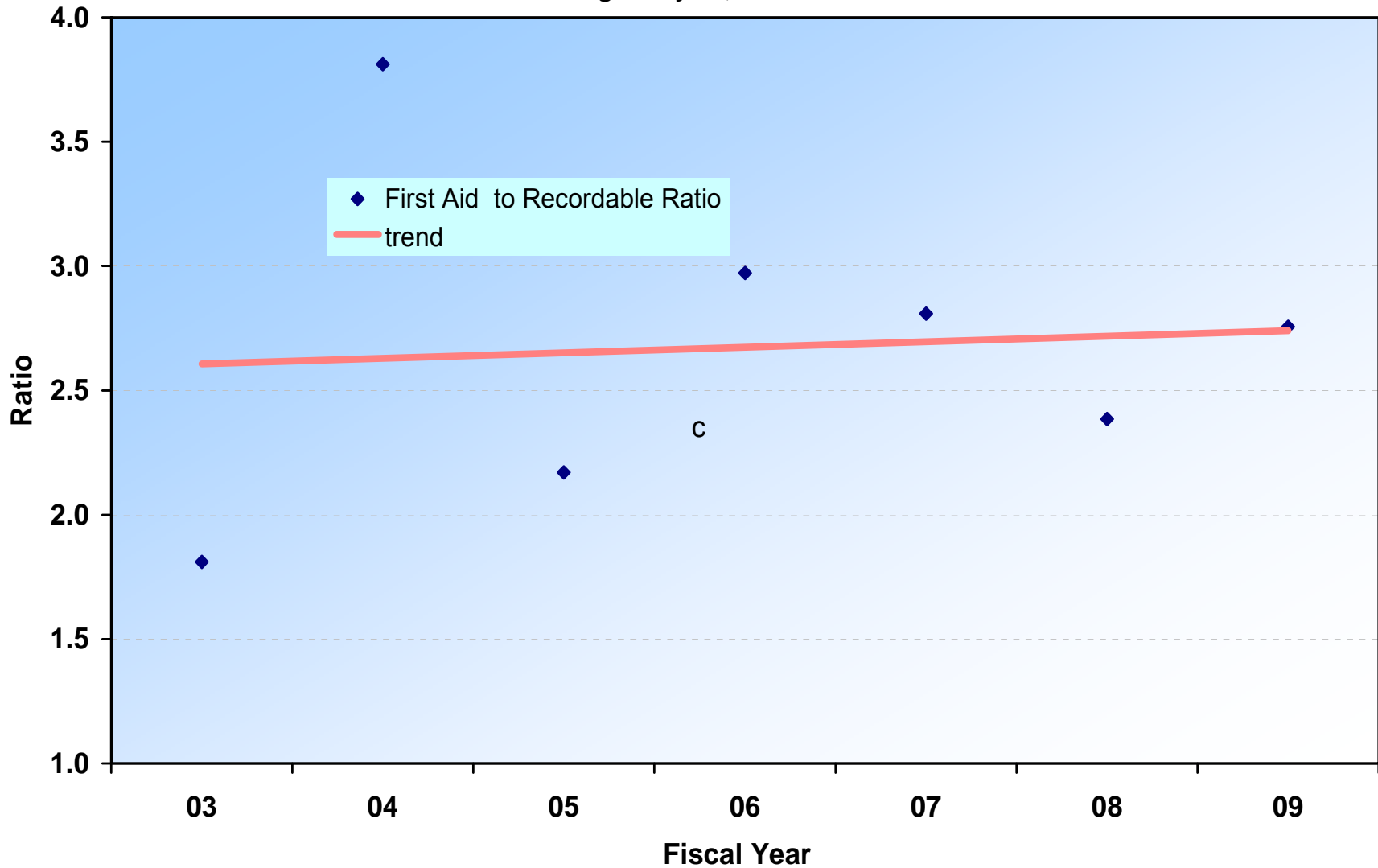


Percentage of All Injuries Reported That Are Recordable Monthly, 12 Month Moving Average, Trend since 1/1/2000

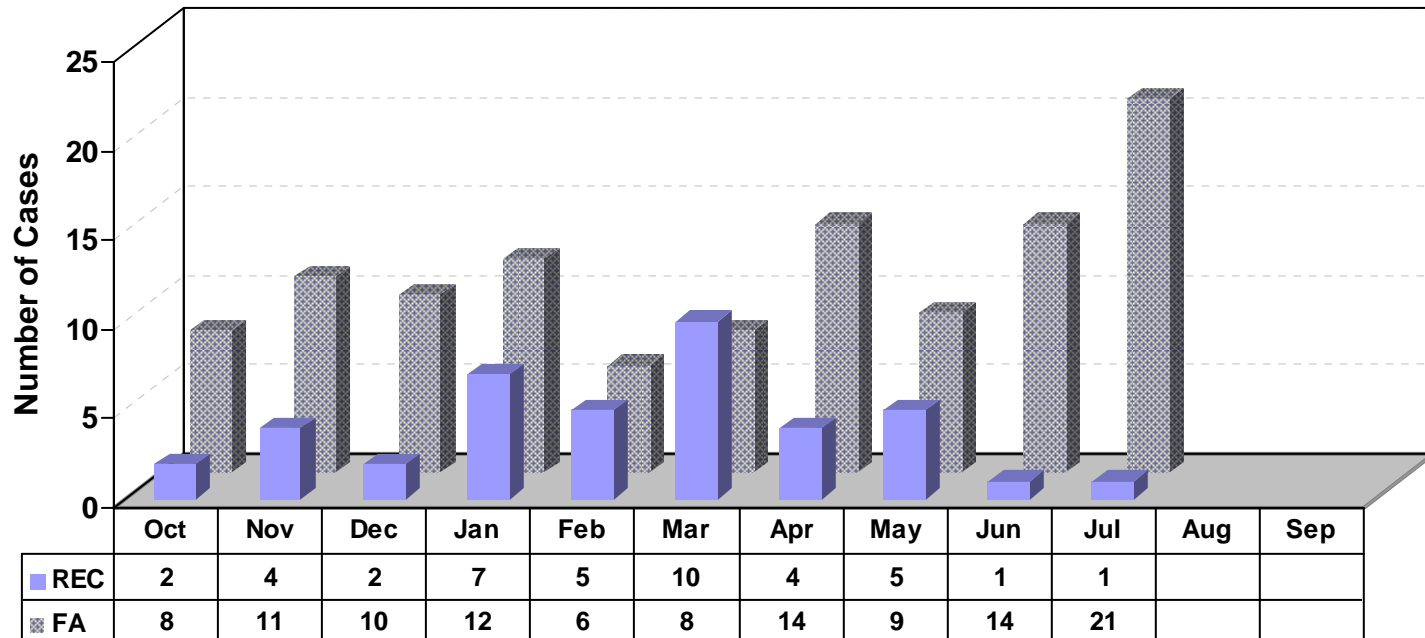


First Aid to Recordable Case Ratio

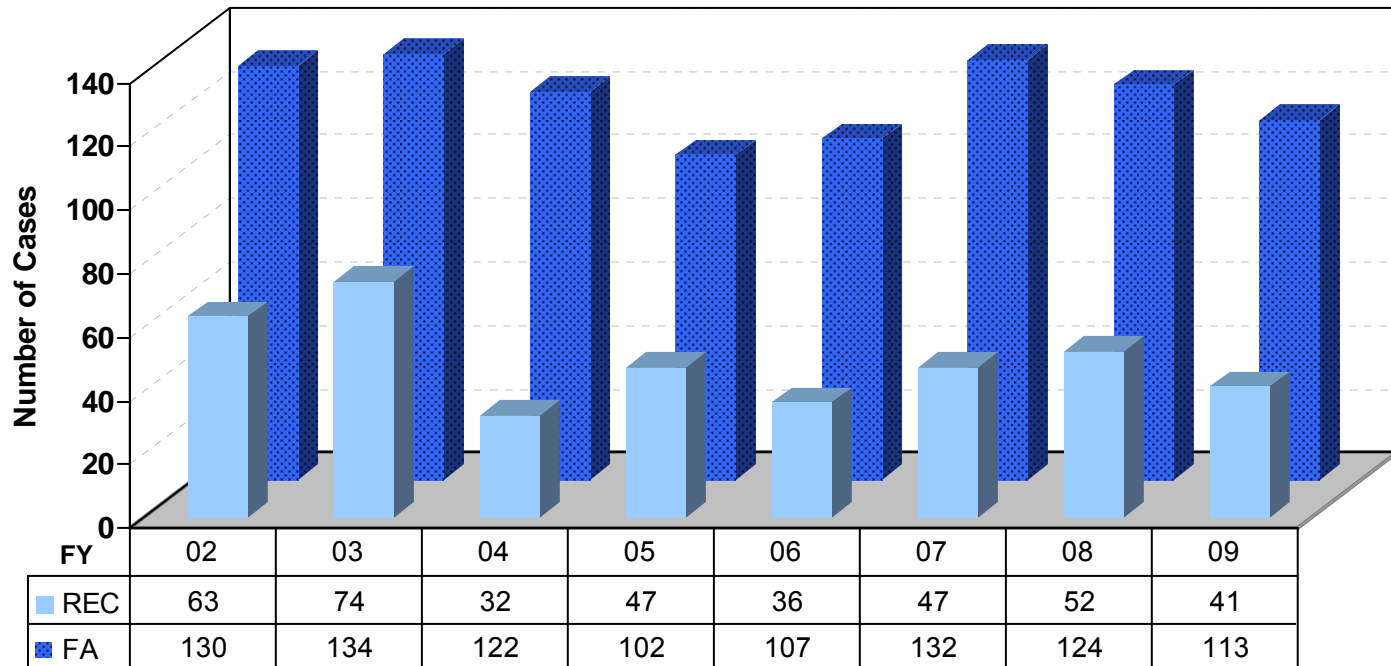
through July 31, 2009



FY09 First Aid to Recordable Comparison through July 31, 2009



FY02 to FY09 First Aid to Recordable Comparison through July 31, 2009



LBNL Total Recordable Cases October 1, 2008 - September 30, 2009 (FY09)

	Oct-08	Nov-08	Dec-08	Jan-09	Feb-09	Mar-09	Apr-09	May-09	Jun-09	Jul-09	Aug-09	Sep-09	Contract Goal TRC = 0.65	Total YTD
LBNL Research														
Computing Sciences	0	0	0	0	1	1	0	0	0	0	0	0	1	2
Computational Research	0	0	0	0	1	0	0	0	0	0	0	0		1
NERSC Center	0	0	0	0	0	1	0	0	0	0	0	0		1
General Sciences	1	0	0	2	0	0	1	0	0	0	0	0	3	4
AFRD	0	0	0	0	0	0	0	0	0	0	0	0		0
Engineering	1	0	0	2	0	0	1	0	0	0	0	0		4
Nuclear Science	0	0	0	0	0	0	0	0	0	0	0	0		0
Physics	0	0	0	0	0	0	0	0	0	0	0	0		0
Life & Environmental Sciences	0	0	0	0	0	1	1	1	1	0	0	0	4	4
Earth Sciences	0	0	0	0	0	0	1	0	0	0	0	0		1
Genomics	0	0	0	0	0	1	0	0	1	0	0	0		2
Life Sciences	0	0	0	0	0	0	0	1	0	0	0	0		1
Physical Sciences	1	0	0	0	1	4	0	0	0	1	0	0	5	7
ALS	0	0	0	0	0	2	0	0	0	0	0	0		2
Chemical Sciences	0	0	0	0	1	0	0	0	0	0	0	0		1
Environmental Energy Tech.	0	0	0	0	0	1	0	0	0	0	0	0		1
Materials Sciences	1	0	0	0	0	0	0	0	0	1	0	0		2
Physical Biosciences	0	0	0	0	0	1	0	0	0	0	0	0		1
LBNL Research Sub-Total	2	0	0	2	2	6	2	1	1	1	0	0	13	17
LBNL Support														
Environment, Health & Safety	0	1	0	1	0	0	1	0	0	0	0	0		3
Facilities	0	1	0	1	2	3	0	2	0	0	0	0		9
Human Resources	0	0	0	0	0	0	1	0	0	0	0	0		1
Information Technology	0	1	0	0	0	1	0	1	0	0	0	0		3
Public Affairs	0	0	1	0	0	0	0	0	0	0	0	0		1
CFO	0	1	1	3	1	0	0	0	0	0	0	0		6
Directorate	0	0	0	0	0	0	0	0	0	0	0	0		0
LBNL Support Sub-Total	0	4	2	5	3	4	2	3	0	0	0	0	4	23
LBNL Total	2	4	2	7	5	10	4	4	1	1	0	0	17	40
LBNL Construction	0	0	0	0	0	0	0	1	0	0	0	0	0	1
LBNL Service Subcontractors	0	0	0	0	0	0	0	0	0	0	0	0	1	0
Site Grand Total	2	4	2	7	5	10	4	5	1	1	0	0	18	41
<i>Prior Year (FY08) Site Grand Total</i>	7	4	4	2	3	4	3	7	5	5	2	6		52
<i>Prior Year (FY07) Site Grand Total</i>	5	7	2	4	5	6	1	2	2	8	2	4		48
Color Gradation Key:	0	1	2	3	4	5	6	7	8+					

Data as of 7/31/09

Notes: Projections assume that hours worked will remain constant

LBNL DART (Days Away, Restricted, Transferred) Cases October 1, 2008 - September 30, 2009 (FY09)

	Oct-08	Nov-08	Dec-08	Jan-09	Feb-09	Mar-09	Apr-09	May-09	Jun-09	Jul-09	Aug-09	Sep-09	Contract Goal DART = 0.25	Total YTD	
LBNL Research															
Computing Sciences	0	0	0	0	0	0	0	0	0	0	0	0	0	0	
Computational Research	0	0	0	0	0	0	0	0	0	0	0	0	0	0	
NERSC Center	0	0	0	0	0	0	0	0	0	0	0	0	0	0	
General Sciences	1	0	0	1	0	0	0	0	0	0	0	0	1	2	
AFRD	0	0	0	0	0	0	0	0	0	0	0	0	0	0	
Engineering	1	0	0	1	0	0	0	0	0	0	0	0	0	2	
Nuclear Science	0	0	0	0	0	0	0	0	0	0	0	0	0	0	
Physics	0	0	0	0	0	0	0	0	0	0	0	0	0	0	
Life & Environmental Sciences	0	0	0	0	0	0	0	1	0	0	0	0	2	1	
Earth Sciences	0	0	0	0	0	0	0	0	0	0	0	0	0	0	
Genomics	0	0	0	0	0	0	0	0	0	0	0	0	0	0	
Life Sciences	0	0	0	0	0	0	0	1	0	0	0	0	0	1	
Physical Sciences	0	0	0	0	0	2	0	0	0	0	0	0	2	2	
ALS	0	0	0	0	0	1	0	0	0	0	0	0	0	1	
Chemical Sciences	0	0	0	0	0	0	0	0	0	0	0	0	0	0	
Environmental Energy Tech.	0	0	0	0	0	1	0	0	0	0	0	0	0	1	
Materials Sciences	0	0	0	0	0	0	0	0	0	0	0	0	0	0	
Physical Biosciences	0	0	0	0	0	0	0	0	0	0	0	0	0	0	
LBNL Research Sub-Total	1	0	0	1	0	2	0	1	0	0	0	0	5	5	
LBNL Support															
Environment, Health & Safety	0	0	0	0	0	0	1	0	0	0	0	0	0	1	
Facilities	0	1	0	0	1	2	0	1	0	0	0	0	0	5	
Human Resources	0	0	0	0	0	0	0	0	0	0	0	0	0	0	
Information Technology	0	1	0	0	0	1	0	0	0	0	0	0	0	2	
Public Affairs	0	0	0	0	0	0	0	0	0	0	0	0	0	0	
CFO	0	0	0	1	0	0	0	0	0	0	0	0	0	1	
Directorate	0	0	0	0	0	0	0	0	0	0	0	0	0	0	
LBNL Support Sub-Total	0	2	0	1	1	3	1	1	0	0	0	0	2	9	
LBNL Total	1	2	0	2	1	5	1	2	0	0	0	0	7	14	
LBNL Construction	0	0	0	0	0	0	0	1	0	0	0	0	0	1	
LBNL Service Subcontractors	0	0	0	0	0	0	0	0	0	0	0	0	0	0	
Site Grand Total	1	2	0	2	1	5	1	3	0	0	0	0	7	15	
<i>Prior Year (FY08) Site Grand Total</i>	3	3	2	1	1	3	1	4	1	2	1	1	0	24	
<i>Prior Year (FY07) Site Grand Total</i>	2	4	0	3	2	4	1	1	0	4	0	3	0	24	
Color Gradation Key:	0	1	2	3	4	5	6	7	8+						

7/31/09 Notes: Projections assume that hours worked will remain constant