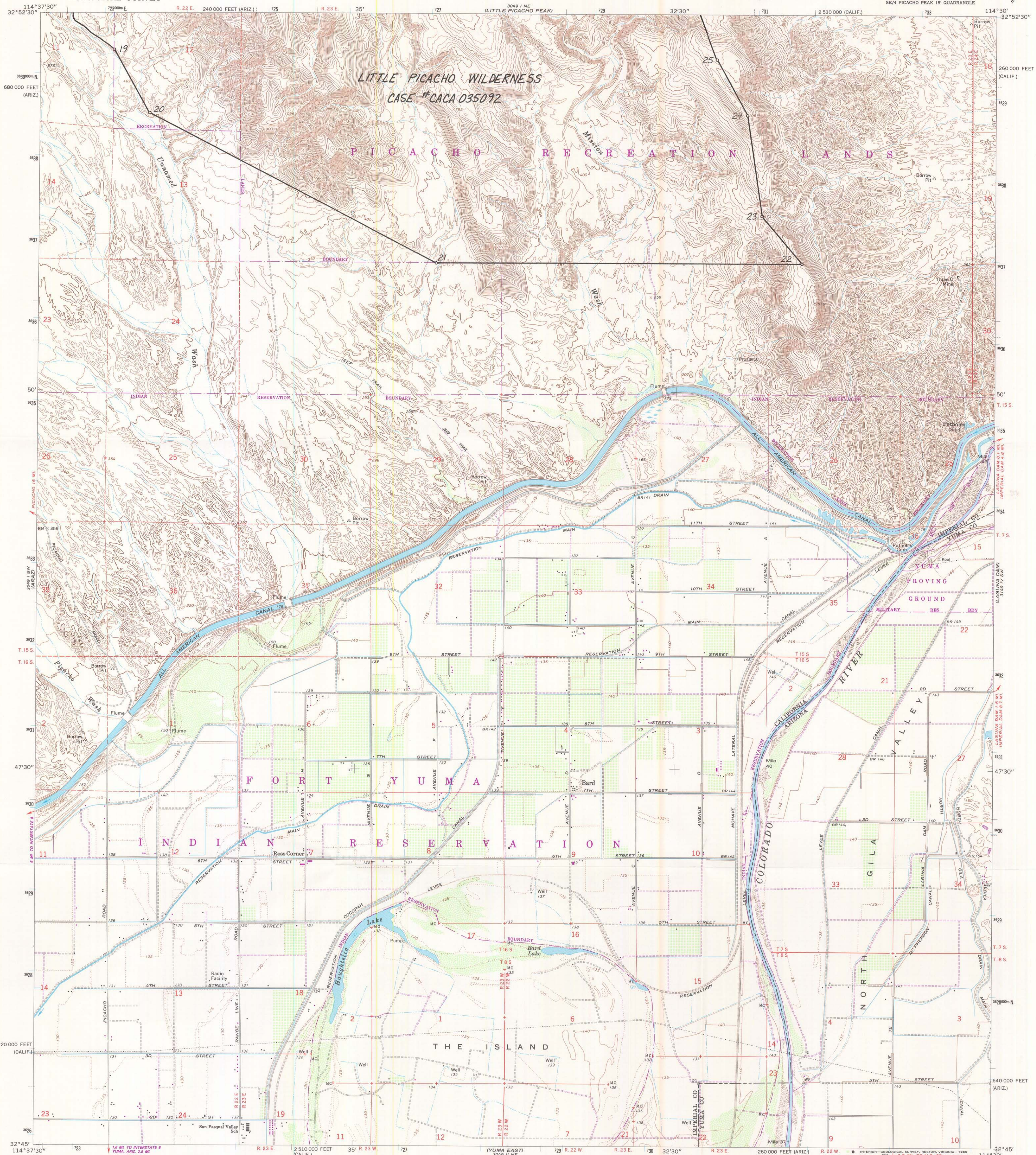


APR 15 1999



LITTLE PICACHO WILDERNESS  
CASE #CACA 035092

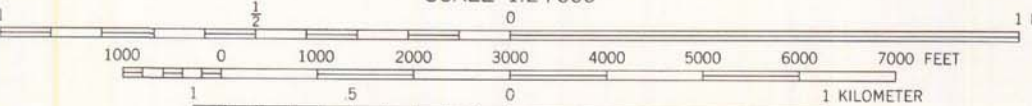
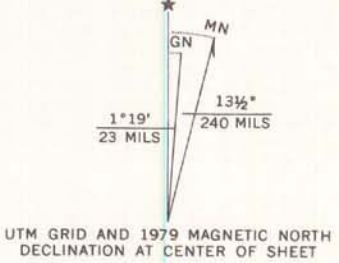
PICACHO RECREATION LANDS

FORT YUMA

INDIAN RESERVATION

THE ISLAND

Mapped, edited, and published by the Geological Survey in cooperation with the State of California. Control by USGS, NOS/NOAA, USCE, and City of Los Angeles. Topography by photogrammetric methods from aerial photographs taken 1948, and by planimetric surveys 1952. Revised from aerial photographs taken 1961, and by planimetric surveys 1965. Polyconic projection. 1927 North American datum 10,000-foot grids based on California coordinate system, zone 6 and Arizona coordinate system, west zone 1000-meter Universal Transverse Mercator grid ticks, zone 11, shown in blue. To place on the predicted North American Datum 1983 move the projection lines 4 meters south and 73 meters east as shown by dashed corner ticks. There may be private inholdings within the boundaries of the National or State reservations shown on this map.



SCALE 1:24,000  
CONTOUR INTERVAL 20 FEET  
DOTTED LINES REPRESENT 5-FOOT CONTOURS  
NATIONAL GEODETIC DATUM OF 1929

THIS MAP COMPLIES WITH NATIONAL MAP ACCURACY STANDARDS  
FOR SALE BY U.S. GEOLOGICAL SURVEY, DENVER, COLORADO 80225, OR RESTON, VIRGINIA 22092  
A FOLDER DESCRIBING TOPOGRAPHIC MAPS AND SYMBOLS IS AVAILABLE ON REQUEST

ORIGINAL

FINAL

QUADRANGLE LOCATION

ROAD CLASSIFICATION  
Medium-duty Light-duty  
Unimproved dirt

BARD, CALIF.-ARIZ.  
SE/4 PICACHO PEAK 15' QUADRANGLE  
N3245-W11430/7.5

1965  
PHOTOREVISED 1979  
DMA 3049 I SE-SERIES V895

Revisions shown in purple and woodland compiled by the Geological Survey from aerial photographs taken 1976 and other source data. This information not field checked. Map edited 1979.