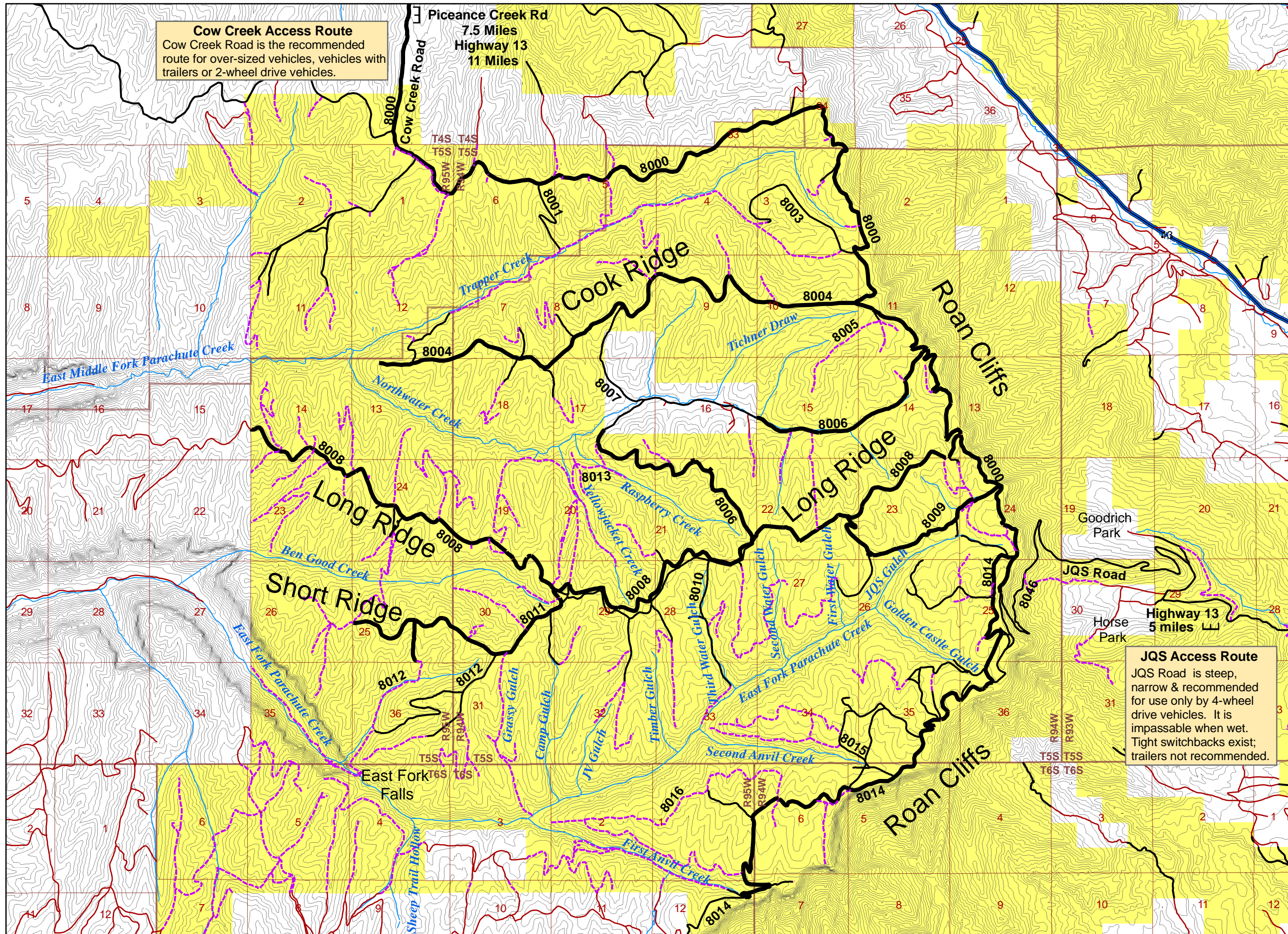


# Roan Plateau Fall 2008 Travel Guide



**Cow Creek Access Route**  
Cow Creek Road is the recommended route for over-sized vehicles, vehicles with trailers or 2-wheel drive vehicles.

Piceance Creek Rd  
7.5 Miles  
Highway 13  
11 Miles

**JQS Access Route**  
JQS Road is steep, narrow & recommended for use only by 4-wheel drive vehicles. It is impassable when wet. Tight switchbacks exist; trailers not recommended.

*All motorized and mechanized travel on public lands is limited to primary and secondary roads shown on this map. Direct access to a suitable camp site within 300 feet of a designated motorized route is authorized.*

- Major Highway
- Primary Road
- Secondary Road
- Private Road  
No Public Access
- Foot/Horse Trail  
Administrative  
Motorized Use Only
- BLM
- Private

*All travel designations on this map are part of the Roan Plateau Plan (2007). Road closures to motorized vehicles protect big-game habitat and cutthroat trout.*

*Road conditions vary depending upon weather and maintenance schedules. Winter maintenance does not occur. Be prepared for adverse conditions and/or impassable roads any time of year.*

