

APPENDIX D – VISUAL SIMULATION



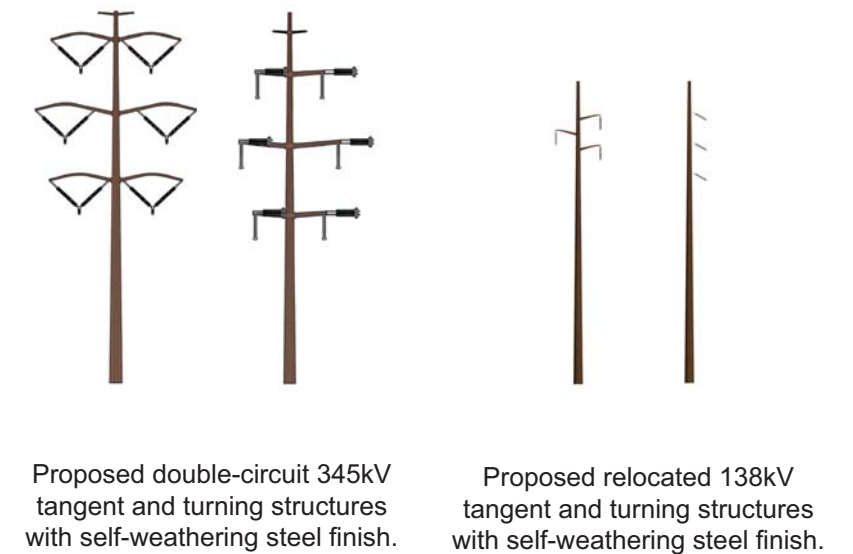
Existing Condition – View looking east of gravel mine, foothills, and 138kV transmission line from residential neighborhood in Perry, Utah.



Photo Location: View east toward the foothills from a point near the corner of Peach Street and 2825 South in Perry, Utah.



Simulation – Proposed 345kV transmission line and relocated 138kV transmission line in the foothills above Perry, Utah.



Proposed double-circuit 345kV tangent and turning structures with self-weathering steel finish.

Proposed relocated 138kV tangent and turning structures with self-weathering steel finish.

Populus to Ben Lomond 345kV Transmission Line Project

Photo Date: 08-10-08 Time: 1:20 p.m.

Structure models used in the simulation were created using diagrams provided by Rocky Mountain Power. This simulation represents a schematic concept design for the proposed project. Actual final structure sizes, heights, materials, and conductor sag will vary on a case-by-case basis.



October 15, 2008

Proposed Transmission Line Route Through a Portion of Perry, Utah



Legend

- Proposed 345kV Transmission Line Structure
- Proposed 138kV Transmission Line Structure
- Proposed 345kV Transmission Line
- Proposed 138kV Transmission Line

Note: Locations shown for proposed transmission lines and structures are preliminary and may change upon further engineering.



0 150 300 600 900
In Feet

**Populus to Ben Lomond
345kV Transmission Line Project**

October 15, 2008

