

# UNIQUE IDENTIFICATION (UID)



## **UID Business Rules (Version 3.5)**



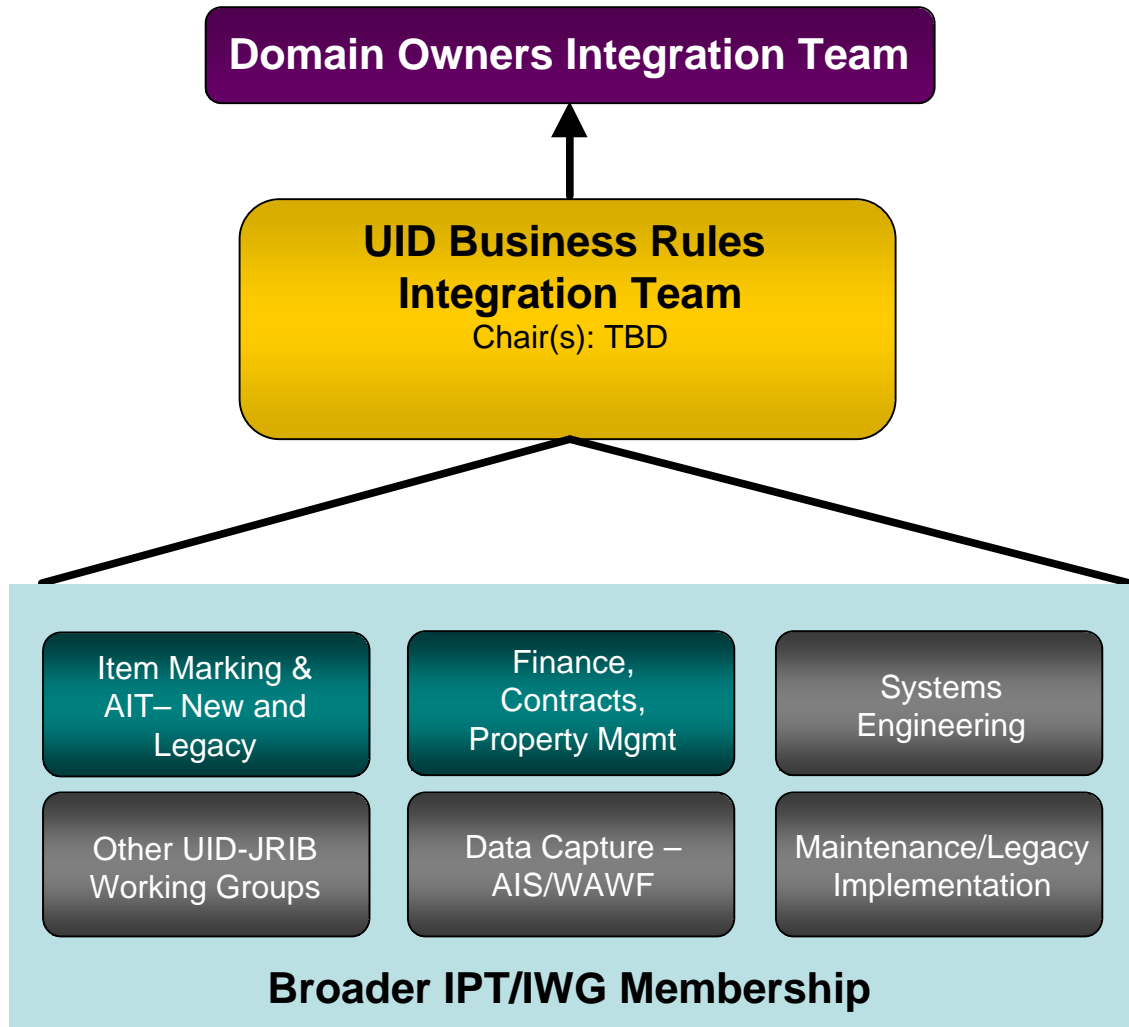
# Agenda

Topic	Timing	Speaker
Business Rules Integration – Future Team Structure and Operating Model	8:30 – 9:00	Leibrandt
Resolve Open Work Items and Discuss Contracts, Finance and Property Management Proposed Rules	9:00 – 3:30	Team
Identify High Impact Legacy Implementation Issues (including the CH 47 demonstration)	3:30 – 4:30	Team
Next Steps	4:30	Keane

# Business Rules Integration



# Business Rules Integration Team Charter



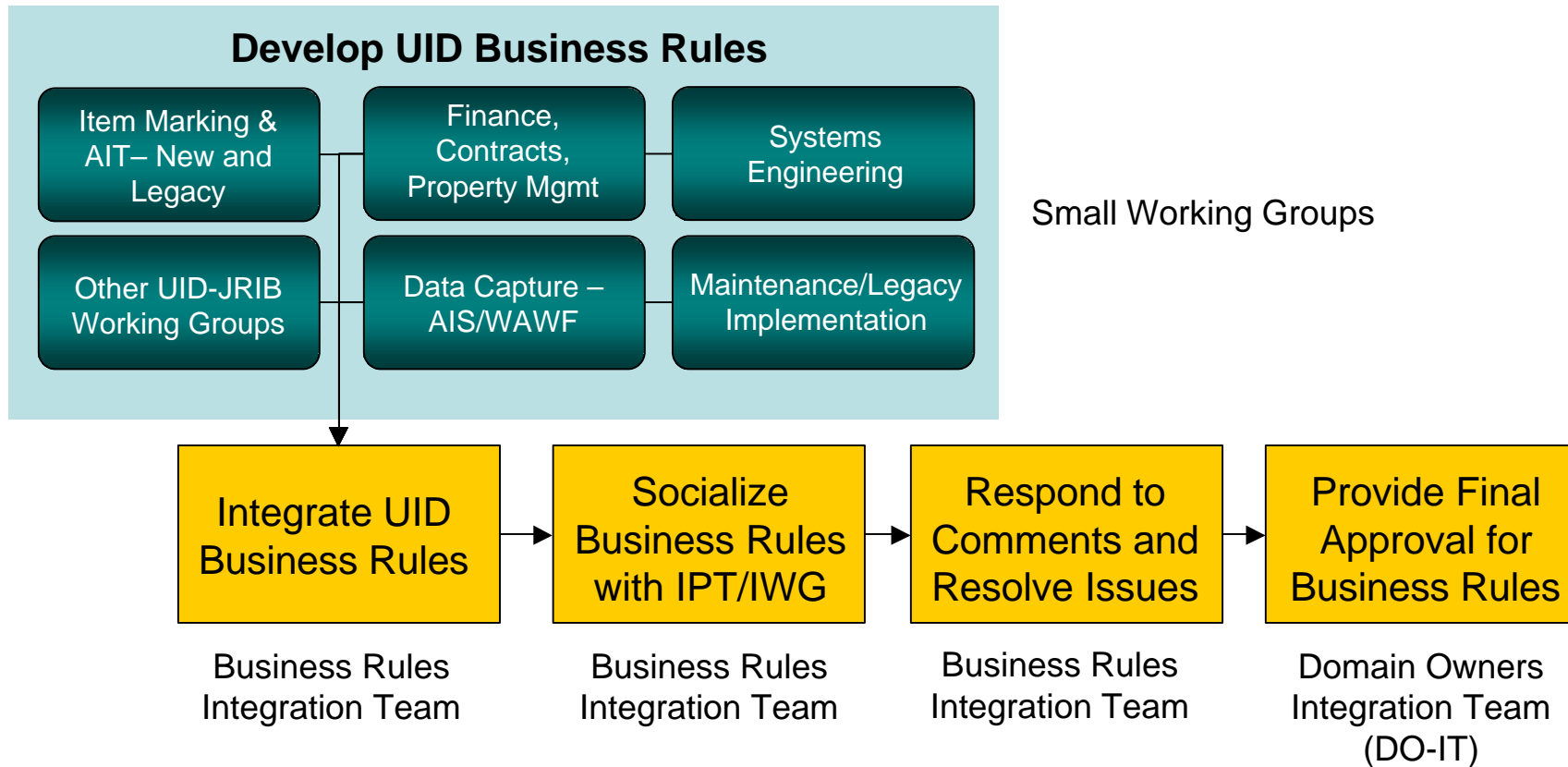
- ✓ Less than 10 members
- ✓ Cross-domain expertise
- ✓ Co-chaired by one Industry and one Government representative
- ✓ Coordinates with the JRIB

### Small Working Groups, Represented by:

- ✓ Subject Matter Experts
- ✓ Cross-domain
- ✓ Cross-service
- ✓ Industry

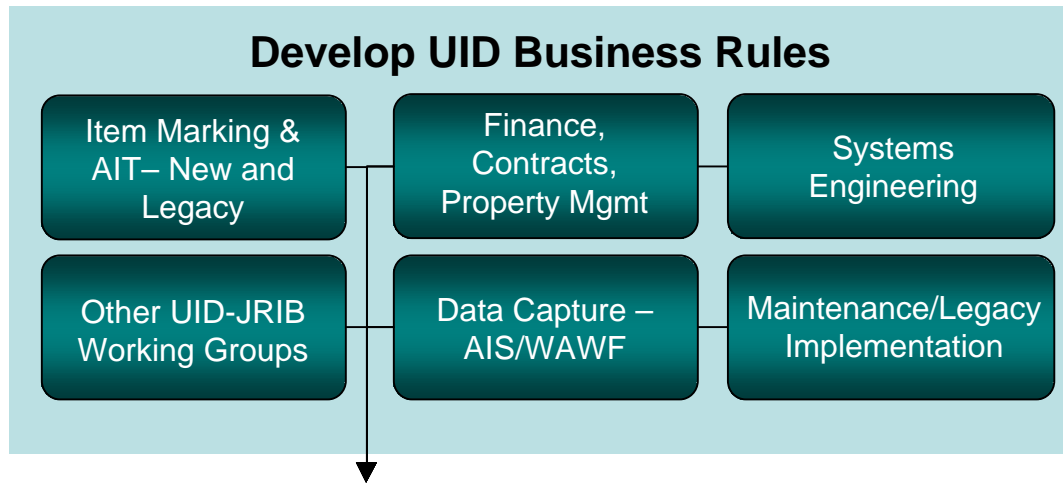


# Business Rules Integration Team Charter





# Develop UID Business Rules



## Small Working Groups, Represented by:

- ✓ Subject Matter Experts
- ✓ Cross-domain
- ✓ Cross-service
- ✓ Industry

- ◆ Each working group has its own charter, work plan, and membership, according to pre-established UID templates and guidelines
- ◆ The Business Rules Integration Team keeps a master schedule of each team's work plan and reviews progress and ongoing work products on a bi-weekly basis



# Integrate UID Business Rules

---

---

Integrate UID  
Business Rules



## **Business Rules Integration Team**

- ✓ Less than 10 members
- ✓ Cross-domain expertise
- ✓ Co-chaired by one Industry and one Government representative
- ✓ Coordinates with the JRIB

- ◆ The Business Rules Integration Team will collect, on a bi-weekly basis, issues and/or UID business rules (e.g., work product) developed by each Working Group
- ◆ Responsibilities include:
  - ✓ Facilitating cross-team communication, work item referrals, and timely resolution of questions
  - ✓ Assisting Working Groups with intra-team issue resolution
  - ✓ Monitoring master work plan progress
  - ✓ Identifying issues and risks
  - ✓ Escalating issues and risks to the JRIB as needed



## Socialize Business Rules with UID IPT

---

---

Socialize  
Business Rules  
with IPT/IWG



- ◆ The Business Rules Integration Team will package the business rules into versions and distribute them on a monthly or bi-monthly basis to the UID IPT/IWG membership for review and comment
- ◆ The IPT/IWG members should be required to provide feedback within a specified time period





## Respond to Comments and Resolve Issues

---

---

Respond to  
Comments and  
Resolve Issues



- ◆ The Business Rules Integration Team will identify and resolve each issue raised by a UID IPT/IWG member, based on the guiding principles of UID and gathering additional feedback from the Working Groups
- ◆ The Business Rules Integration Team will respond to each comment made by a UID IPT/IWG member, keeping a running list of comments and resolutions posted on the UID website
- ◆ Any issues that cannot be resolved will be escalated to the Domain Owners Integration Team (DO-IT)



# Business Rules Integration Team Operating Model

---

---

Provide Final  
Approval for  
Business Rules



**Domain Owners  
Integration Team  
(DO-IT)**

- ◆ The Business Rules Integration Team will coordinate with the DO-IT on a quarterly basis to provide approval for all UID business rules that have been properly reviewed as of that point
- ◆ Tentative review schedule:
  - ✓ March 31, 2004
  - ✓ June 2004

# Items Under Discussion



## Standards Updates

---

---

Issue: There are 2 open items with regard to standards. What is the status of each item?

- IAC for CAGE (Frank Sharkey)
- Application Identifier for EAN.UCC Company Prefix (Frank Sharkey)

Status:

- ✓ IAC for CAGE: Ballot issued for liaison w/ SC31, will close Jan. 10<sup>th</sup>. Presumed it will pass. Requested single character. AC 135 will assign the second character (CAGE, NCAGE, DODAAC). Codes should be ready for use March 1, 2004.
- ✓ Application Identifier for EAN.UCC Company Prefix: AI has been approved, do not have the number yet. Probably 3 digit. Will try to get the new code into the next version of the guide.



## UID Equivalents – Criteria

---

---

- Must contain an enterprise identifier
- Must uniquely identify an individual item within an enterprise identifier, product or part number
- Must have an existing Data Identifier (DI) or Application Identifier (AI) listed in ANSI MH10.8.2, Data Identifier and Application Identifier Standard



## UID Equivalent Candidates

---

---

Global Individual Asset Identifier (GIAI) (Application Identifier: 8004) - composed of an EAN.UCC Company Prefix and an Individual Asset Reference. The holder of the EAN.UCC Company Prefix determines the structure and numbering of the Individual Asset Reference.

Global Returnable Asset Identifier (GRAI) (Application Identifier: 8003) – composed of a mandatory GRAI and an optional serial number. The GRAI consists of an EAN.UCC Company Prefix and a unique number, the Asset Type, which must be assigned for each type of asset being identified. The owner of the asset assigns the optional serial number. It denotes an Individual Asset within a given Asset Type.

Vehicle Identification Number (VIN), ISO STD 3779 (Data Identifier: I) - divided in four sections:

- (1) The first three characters uniquely identify the manufacturer, make and type of vehicle.
- (2) The second section consists of five characters and identifies the attributes of the vehicle.
- (3) The third section consists a one character check digit.
- (4) The fourth section consists of eight characters on positions 10-17 of the VIN. The first character represents the vehicle model year, the second character represents the plant of manufacture. The third through eighth characters are a sequential production number.

HIBCC Non-pharmaceutical health-care products (Application Identifier: 22) – The HIBCC's four components that ensure uniqueness: a four-position HIBCC manufacturer's identifier; the manufacturer's product identifier; a package or unit-of-measure indicator; and a check digit.

COMMON LANGUAGE® Equipment Identification (CLEI) (Data Identifier: 11P) - an intelligent, 10-character code used in inventory management and provisioning. There is also a 1:1 relationship between a CLEI code and a vendor's product identification. The latter defines the manufacturer, part number and manufacturing version of a given part number.



# UID Equivalents

UID Equivalent	Construct #1 EID + Ser. No.	Construct #2 EID + Part No. + Ser. No.	Format	Data Qualifier
GIAI	<GIAI>		n4+an...30=34	AI: 8004
GRAI	<GRAI>		n4+n14+an...16=34	AI: 8003
VIN	<VIN>		an17	DI: I
HIBCC		<HIBCC> + <SN>	n2+an...29=31 +<SN>	AI: 22
CLEI		<EID> + <CLEI> + <SN>	<EID> + an10 +<SN>	DI: 11P

UID equivalent

Not UID equivalent

Note: The additional data elements in *blue* are required to construct the UID



## Identifiers Meeting the Equivalence Criteria

---

---

- ❑ Global Individual Asset Identifier (GIAI)  
(Application Identifier: 8004)
- ❑ Global Returnable Asset Identifier (GRAI)  
(Application Identifier: 8003)
- ❑ Vehicle Identification Number (VIN), ISO 3779  
(Data Identifier: I)





## Identifiers Not Meeting the Equivalence Criteria

---

---

- ❑ HIBCC Non-pharmaceutical health-care products  
(Application Identifier: 22)
  - Does not provide for serialization of individual items within product identification
  - Can be used to build UID Construct #2: UID = HIBCC + Serial Number
  
- ❑ COMMON LANGUAGE® Equipment Identification (CLEI)  
(Data Identifier: 11P)
  - Does not provide for enterprise identification or serialization within product identification
  - Can be used to build UID Construct #2: UID = EID + CLEI + Serial Number



## Additional Data Elements

Issue: What is the optimal way to treat, lot, batch, and model numbers?

- Do these elements create a requirement for new constructs?
- The current rule 29 recommends concatenating lot and batch with serial to create a unique serial number. Once data elements are changed, how can they be traced?
- How often does uniqueness rely on these numbers?
  - For example, serial number is only unique within lot or batch
  - Are there 4 levels of sorting (i.e., enterprise, model, part, serial)

Resolution:

- ✓ Lot, batch: will create a variant to Construct #2 ("2A"). Simultaneously pursue industry shift away from this variant. Need to be able to identify in UID Type. UID office needs to talk to JOCG. Need qualifiers established for 2A. Mark R. will write up application for DI for serialization within lot or batch.
- ✓ Model: Issue: If there is a model number and not a part number, and the item is uniquely serialized within the model number, what do we do? No new rule needs to be added. There is a legacy question on the table.



# Contracts, Finance and PM Rules Review

---

---

Discussion Topics regarding new rules:

- Should Contracts Rule #1 be broader to read all service contracts or contracts with no delivery of a tangible asset are excluded from UID?  
Tom will review with Mike C. and determine if the DFARS case needs to be changed or should the business rule be changed.
- Other?



## Transfer, Retire, Reuse of the UID

---

---

Issue: Does a rule need to be drafted to clarify what conditions would cause an item to change it's UID

- Remanufacture vs. recycle?
- Business rule 27 addresses transfer, reuse and retire but does not define those events

Resolution:

- ✓ Revision to Rule 27:



## UID and Packaging

---

---

Issue: What is the status of changes to MIL STD 129 to accommodate UID?

- UID of package (if over \$5000)
- UID of package contents marked on the package
- What changes are required? Should a Rule be drafted to refer to MIL STD 129, similar to how Rule 15 refers to MIL STD 130 L?

Resolution:

- ✓ New Rule: This is not a rule issue. Language is being crafted to go into 129.



## Suggested Changes to Rule Wording

---

---

### Rule 28:

If an item is missing data elements required to construct the UID, use the following Rules to create substitute numbers:

- If the enterprise identifier is missing, use the enterprise identifier of the activity that will physically mark the item. **The serial number must comply with Rule #10.**
- If the part number is missing or cannot be determined, obtain a part number from the in-service engineer or other appropriate authority.
- If the serial number is missing, assign a serial number locally or centrally. In this case, the enterprise identifier for the item must be changed to represent the activity that assigned the serial number. **The serial number must comply with Rule #10.**
- **How is inactivity defined for accounting purposes?**



## NRC

---

---

Issue: Is the item tracking done by NRC enough to exclude it from UID?

- If yes, is a new Rule required?
- If no, are Rules required to address those materials?

Resolution:

- ✓ What is the item tracking employed by NRC? Check with NAVSEA 08. Issue is on parts used with nuclear-based activities. Determine what their item marking system and requirements are. Put back on the work item list.



# Basic Ordering Agreements

---

---

Issue: This is a policy issue, but the group has been asked to provide feedback for the policy team.

- Should new orders under existing Basic Ordering Agreements (BOAs) be treated as new solicitations (where UID would apply as of Jan 1 2004) or contracts (UID would not apply as of Jan 1 2004)?

## Key Issues:

- ✓ BOA orders are considered solicitations? Leave it up to the Program Manager (Max provided recommended wording)





## TIWG Update

---

---

- TIWG is working with the 78 character UID – no issues at this point
- No issues with any of the Business Rules as written

78 characters – Revisit with the larger TIWG group. Concern with ANSI X12.

Issue: Do transactions need to have both UID and UID components transmitted? Do we need a sunset clause? Create Work Item.

Verify Rule 26.



## Legacy Items – Identify Key Issues

What are the key issues for legacy from a Business Rules perspective?

- Re-serialization process standardization?
- What to do with unidentifiable items, duplicate registry records due to missing components?  
This is a physical inventory procedure issue. Validate Rule 28, Rule 24
- CH 47 comments
  - Marking of legacy items w/ Construct 1 SPL/UCN TEIs: numbers issued by supplier of data, not manufacturer. Request for business case from Chris Sautter.
  - What semantics to use? E.g., SPL/UCN
- Lot/batch/model issue. If lot or batch number is used to create UID, new DI, AI, and TEI will need to be assigned. Mark R. applying for DI.
- Develop legacy implementation guide? Coordinate with AIS community (e.g., ability to link historical info to new UID)
- In M/R/O who assigns/marks UID? Who's authorized to do re-serialization? Service level decision?
- How is value determined for legacy items? Does it need to be reflected in registry?



## Next Steps

---

---

- Prioritization of efforts
- Next meeting date
- Issue: how to correct discrepancies in the UID registry, receipt discrepancies?