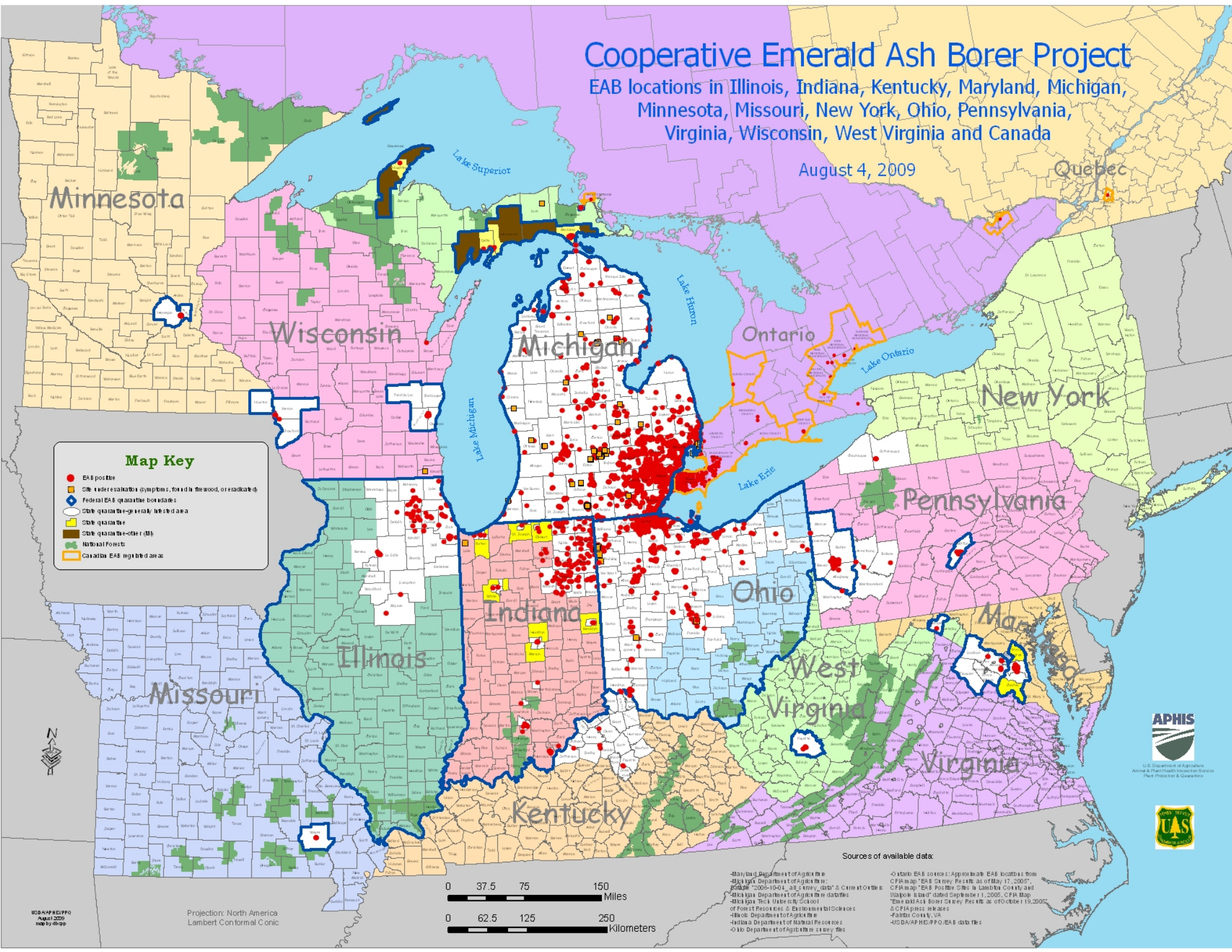


# Cooperative Emerald Ash Borer Project

EAB locations in Illinois, Indiana, Kentucky, Maryland, Michigan, Minnesota, Missouri, New York, Ohio, Pennsylvania, Virginia, Wisconsin, West Virginia and Canada

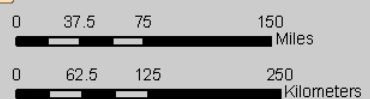
August 4, 2009

Quebec



**Map Key**

- EAB positive
- Site under evaluation (symptoms, for identification, or eradication)
- ◆ Federal EAB quarantine boundaries
- State quarantine recently infested area
- State quarantine other (MI)
- National Forests
- Canadian EAB registered areas



Projection: North America Lambert Conformal Conic

USDA/APHIS/PPD  
August 2009  
map by dhop

**Sources of available data:**

- Maryland Department of Agriculture
- Michigan Department of Agriculture
- Mississippi Department of Agriculture
- Missouri Department of Agriculture
- New York State Department of Agriculture and Markets
- Ohio Department of Agriculture
- Ontario Department of Agriculture, Food and Rural Affairs
- Pennsylvania Department of Agriculture
- Virginia Department of Agriculture and Forestry
- West Virginia Department of Agriculture
- Wisconsin Department of Agriculture, Trade and Consumer Services
- Illinois Department of Natural Resources
- USDA/APHIS/PPD/EAB data files
- Ontario EAB scores: Approximate EAB locations from CFIA map "EAB Survey Results as of May 17, 2005"
- CFIA map "EAB Positive Sites in Ontario County and Walpole Island" dated September 1, 2005, CFIA Map "Emerald Ash Borer Survey Results as of October 19, 2005"
- CFIA press releases
- Fairfax County, VA
- USDA/APHIS/PPD/EAB data files

