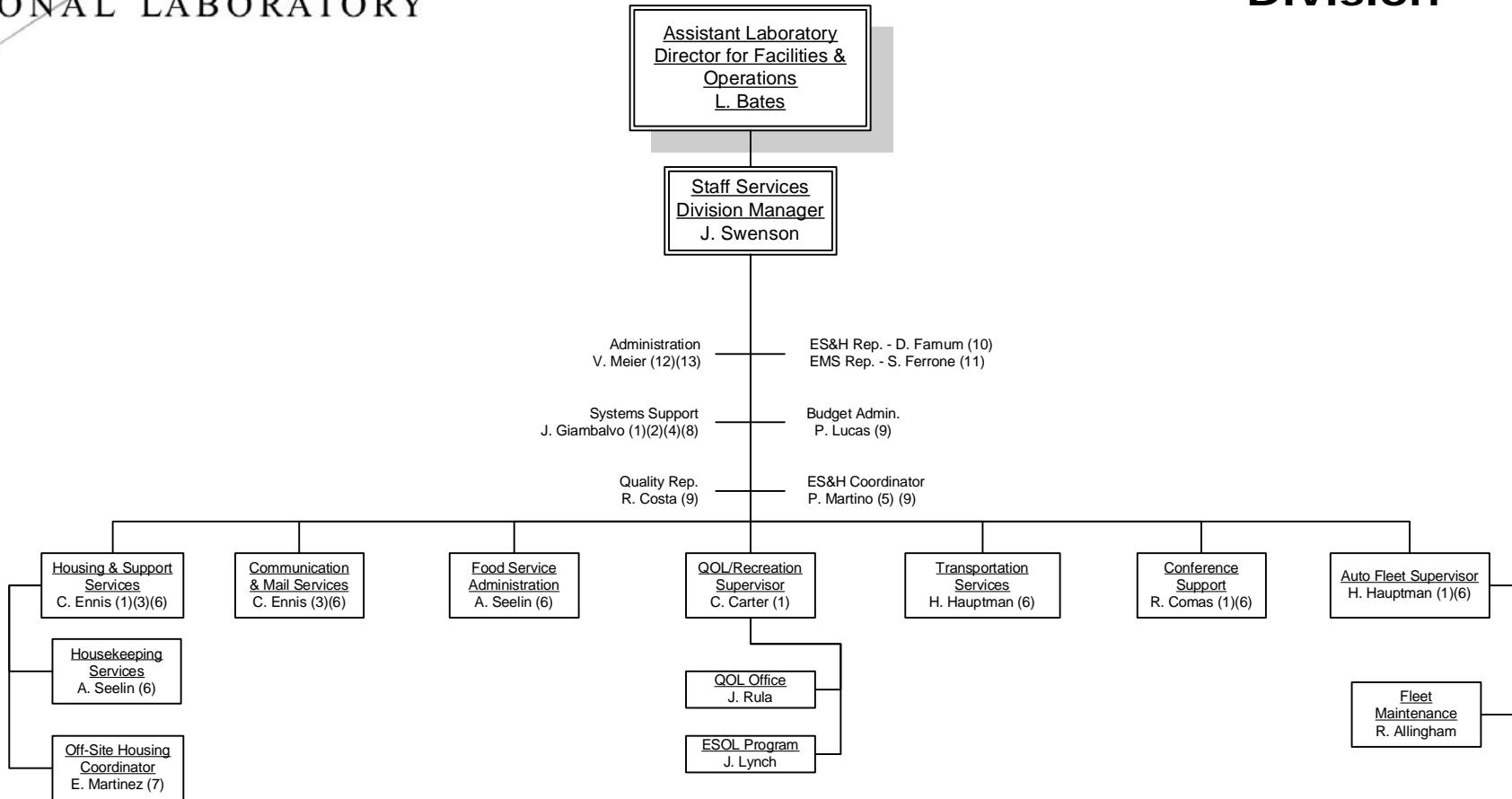


# Staff Services Division



**Key**

- (1) Building Manager
- (2) LEC
- (3) EEO Representative
- (4) Property Representative
- (5) EMS Coordinator
- (6) Dual Responsibilities
- (7) Part Time Employee
- (8) Training Coordinator
- (9) Matrixed from F&O Directorate
- (10) Matrixed from Rad Con Division
- (11) Matrixed from Environmental & Waste
- (12) Records Representative
- (13) TSR

Jeffrey Swenson  
Division Manager  
October 1, 2007