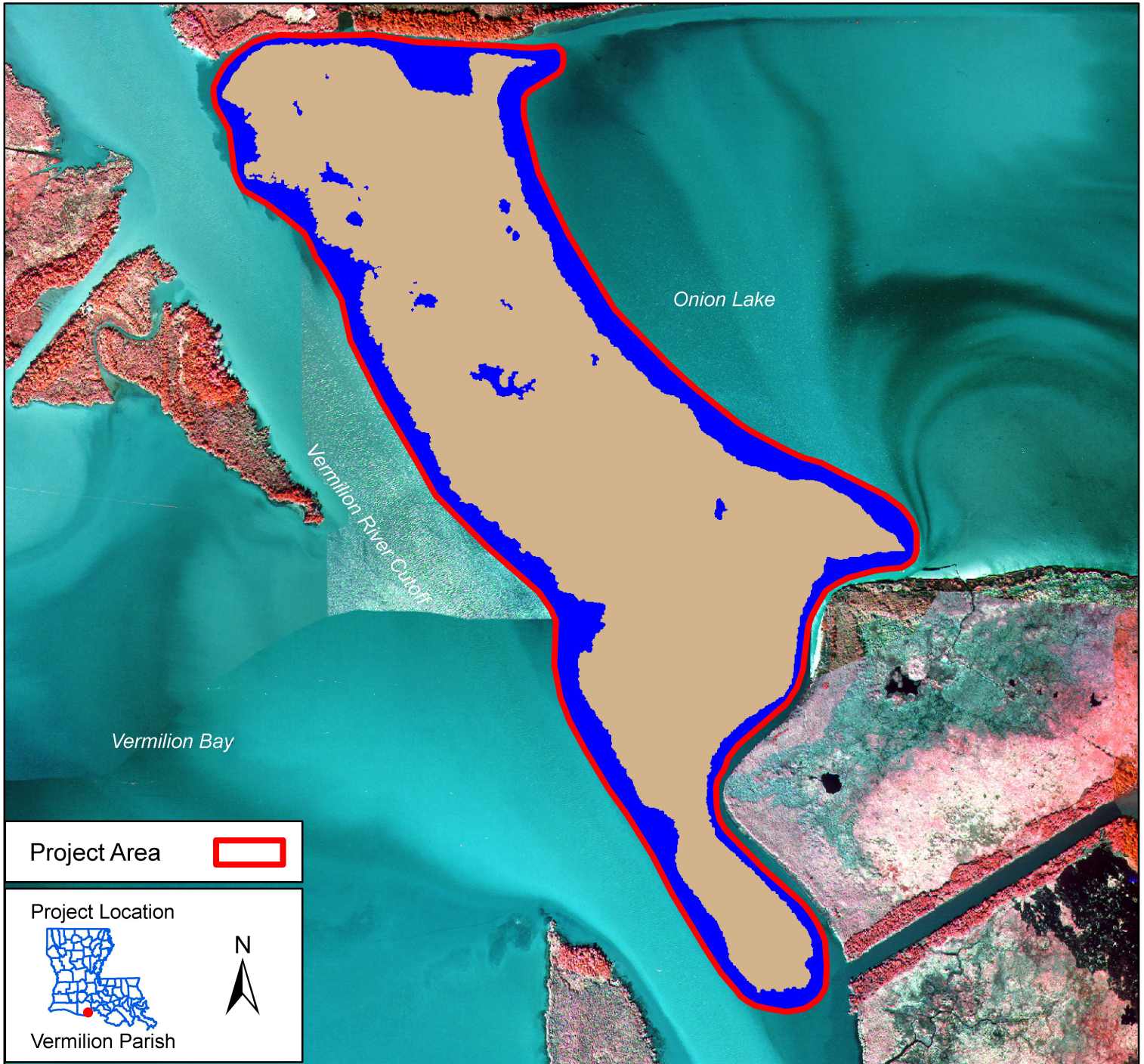


Vermilion River Cutoff Bank Protection (TV-03)

Coastal Wetlands Planning, Protection and Restoration Act

1993 Land-Water Analysis



Project Area

Project Location

Vermilion Parish

Class	Acres
Water	46
Land	148
Total	194

Data Source:
 The land-water data were obtained from 1:12,000 scale, color infrared photography acquired November 1, 1993. All areas characterized by uplands, emergent vegetation, wetland forest, and scrub-shrub were classified as land, while open water, mudflats, and aquatic beds were classified as water.

Prepared by:
 U.S. Department of the Interior
 U.S. Geological Survey
 National Wetlands Research Center
 Lafayette, Louisiana
 and
 Louisiana Department of Natural Resources
 Coastal Restoration Division
 Lafayette Field Office

Scale = 1:10,000

Federal Sponsor:
 U.S. Army Corps of Engineers

