

THE
CEMETERIES

OF
ALBUQUERQUE
BERNALILLO COUNTY
AND
PARTS OF SANDOVAL &
VALENCIA COUNTIES



BY
CAROL J. CONDIE
QUIVIRA RESEARCH ASSOCIATES
FOR
THE CITY OF ALBUQUERQUE
NEW MEXICO



CITY OF ALBUQUERQUE

P.O. Box 1293, Albuquerque, New Mexico 87103, USA
www.cabq.gov

OFFICE OF THE MAYOR/CAO

Jim Baca, Mayor

Lawrence Rael, Chief Administrative Officer

Vickie Fisher, Deputy Chief Administrative Officer

Connie Beimer, Deputy Chief Administrative Officer

CITY COUNCIL OFFICE

Michael Brasher, President, District 9

Alan B. Armijo, Vice President, District 1

Vincent E. Griego, District 2 Tim Kline, District 5

Adele Baca-Hundley, District 3 Hess Yntema, District 6

Brad Winter, District 4 Mike McEntee, District 7

Greg Payne, District 8

Mark Sanchez, Director of Council Services

PLANNING DEPARTMENT

Robert R. McCabe, Director

Richard Sertich, Associate Director

Joel Wooldridge, Manager, Advance Planning and Urban Design Division

Edgar Boles, Historic Preservation Planner

PARKS AND RECREATION DEPARTMENT

Pleas Glenn, Director

Jay Hart, Superintendent, Open Space Division

Matthew Schmader, Assistant Superintendent, Open Space Division

THE CEMETERIES OF ALBUQUERQUE, BERNALILLO COUNTY,
AND
PARTS OF SANDOVAL AND VALENCIA COUNTIES

Quivira Research Center Publications 383

Prepared under Contract

between

Quivira Research Associates and the City of Albuquerque

by

Carol J. Condie

August 1999

1809 Notre Dame NE
Albuquerque, New Mexico 87106
(505) 255-9264

TABLE OF CONTENTS

	<u>Page</u>
LIST OF ILLUSTRATIONS.....	iii
I. ABSTRACT.....	1
II. BRIEF SKETCH OF PREHISTORY AND HISTORY AND IMPLICATIONS FOR CEMETERIES AND BURIALS.....	1
III. CEMETERIES AND BURIALS DISCOVERED AS A RESULT OF CONSTRUCTION.....	3
IV. WHAT CAN BE LEARNED FROM CEMETERIES?.....	3
V. PRESERVING HISTORIC CEMETERIES.....	5
VI. FEDERAL, STATE, COUNTY, AND CITY LEGISLATION.....	5
VII. METHODOLOGY.....	6
VIII. LITERATURE AND ARCHIVAL SEARCH.....	7
IX. LIST OF CEMETERIES.....	9
List of Cemeteries by USGS 7.5' quad.....	9
USGS Alameda, NM 7.5' quad.....	9
USGS Albuquerque East, NM 7.5' quad.....	11
USGS Albuquerque West, NM 7.5' quad.....	12
USGS Belen, NM 7.5' quad.....	17
USGS Bernalillo, NM 7.5' quad.....	18
USGS Chilili, NM 7.5' quad.....	18
USGS Escabosa, NM 7.5' quad.....	19
USGS Herrera, NM 7.5' quad.....	19
USGS Hubbell Spring, NM 7.5' quad.....	19
USGS Isleta, NM 7.5' quad.....	19
USGS Loma Machete, NM 7.5' quad.....	20
USGS Los Griegos, NM 7.5' quad.....	21
USGS Los Lunas, NM 7.5' quad.....	22
USGS Placitas, NM 7.5' quad.....	23
USGS Sandia Crest, NM 7.5' quad.....	23
USGS Sandia Park, NM 7.5' quad.....	23
USGS Sedillo, NM 7.5' quad.....	24
USGS Tijeras, NM 7.5' quad.....	24
USGS Tome, NM 7.5' quad.....	25
List of Cemeteries by County.....	25
Alphabetized List of Cemeteries.....	28
X. REFERENCES CITED.....	31

APPENDIX A: STATE OF NEW MEXICO LEGISLATION
GOVERNING CEMETERIES & BURIALS (follows illustrations)

LIST OF ILLUSTRATIONS

<u>Figure</u>	<u>Page</u>
1. Albuquerque Area Cemeteries and Burial Sites.....	33
2. Map of Fairview Cemetery.....	34
3. Camposanto de San Ysidro, Corrales.....	35
4. Camposanto de San Ysidro, Corrales.....	36
5. Camposanto de San Ysidro, Corrales.....	37
6. San Carlos/Alameda Cemetery, Albuquerque.....	38
7. San Carlos/Alameda Cemetery, Albuquerque.....	39
8. San Carlos/Alameda Cemetery, Albuquerque.....	40
9. Gate of Heaven Cemetery, Albuquerque.....	41
10. Our Lady of Mt. Carmel Cemetery, Albuquerque.....	42
11. Our Lady of Mt. Carmel Cemetery, Albuquerque.....	43
12. Sandia Memory Gardens, Albuquerque.....	44
13. Sandia Memory Gardens, Albuquerque.....	45
14. Fairview Cemetery, Albuquerque.....	46
15. Fairview Cemetery, Albuquerque.....	47
16. Fairview Cemetery (Congregation Albert section), Albuquerque.....	48
17. Fairview Cemetery (Congregation Albert section), Albuquerque.....	49
18. U.S. Indian School Cemetery, Albuquerque.....	50
19. Sunset Memorial Park, Albuquerque.....	51
20. Sunset Memorial Park, Albuquerque.....	52
21. Mt. Calvary/Santa Barbara Cemetery, Albuquerque.....	53
22. Mt. Calvary/Santa Barbara Cemetery, Albuquerque.....	54
23. Santa Clara Cemetery, Albuquerque.....	55
24. Santa Clara Cemetery, Albuquerque.....	56
25. Benino Cemetery, Albuquerque.....	57
26. Benino Cemetery, Albuquerque.....	58
27. San José/El Rosario Cemetery, Albuquerque.....	59

27.	San José/El Rosario Cemetery, Albuquerque.....	59
28.	San José/El Rosario Cemetery, Albuquerque.....	60
29.	San José de Armijo Cemetery, Albuquerque.....	61
30.	San José de Armijo Cemetery, Albuquerque.....	62
31.	San José de Armijo Cemetery, Albuquerque.....	63
32.	El Evangelico Cemetery, Albuquerque.....	64
33.	El Evangelico Cemetery, Albuquerque.....	65
34.	Mtn. View/Martinez Family Cemetery, Albuquerque.....	66
35.	Mtn. View/Martinez Family Cemetery, Albuquerque.....	67
36.	San Francisco/Candelaria Cemetery, Albuquerque.....	68
37.	San Francisco/Candelaria Cemetery, Albuquerque.....	69
38.	San Francisco/Candelaria Cemetery, Albuquerque.....	70
39.	San Felipe de Neri Church, Albuquerque.....	71
40.	San Ignacio Church, Albuquerque.....	72
41.	San Antonito Church and Cemetery, San Antonito.....	73
42.	San Antonito Church and Cemetery, San Antonito.....	74

THE CEMETERIES OF ALBUQUERQUE, BERNALILLO COUNTY,
AND
PARTS OF SANDOVAL AND VALENCIA COUNTIES

I. ABSTRACT

Quivira Research Associates undertook this study to locate all cemeteries discoverable in archival and other sources in the general Albuquerque-Bernalillo County area at the request of the City of Albuquerque Planning Department. Edgar Boles, Historic Preservation Planner, City Planning, and Matthew Schmader, Assistant Director, Open Space, guided the project. QRA personnel were Carol J. Condie, M. Kent Stout, and Erik R. Stout. The City has three purposes in this study:

First, because people have inhabited the Albuquerque area for thousands of years, the potential exists for accidentally destroying or disturbing graves. If possible grave locations can be identified prior to disturbance, extra care can be taken during excavation for construction projects. If graves are present, they can often be avoided and protected. If they cannot be avoided, descendants can be consulted (when they can be identified) and the graves can be carefully excavated with hand tools and removed for reburial with respect and dignity.

Second, cemeteries play important parts in the lives of both small and large communities throughout the world. If an eight-lane highway or other barrier separates a community from its cemetery, the cultural and spiritual life of the community suffers. The City is concerned with maintaining a sense of community in the neighborhoods, villages, and towns that make up Greater Albuquerque.

Third, weather, vandals, pollution, neglect, and even well-intentioned preservation efforts can degrade cemeteries and their graves. This study may be useful to individuals and groups trying to preserve cemeteries.

QRA identified 68 existing cemeteries, plus one proposed cemetery. We visited 19 cemeteries and churches and photographed 18. The sources searched, organizations and individuals interviewed, and the methodology we employed are described below. Three separate lists of cemeteries were compiled. The first list is organized by USGS 7.5' quad, the second by county, and the third by alphabetical order (with county indicated for each entry). This technical report also includes a sketch of prehistory and history and the possibilities of burials for each era, a short discussion of cemeteries and burials discovered as a result of construction, information that can be derived from cemeteries, preservation of historic cemeteries, and legislation that governs disturbance of cemeteries. An appendix contains copies of State of New Mexico laws regarding burials and cemeteries.

II. BRIEF SKETCH OF PREHISTORY AND HISTORY AND IMPLICATIONS
FOR CEMETERIES AND BURIALS

People have lived--and died--in the Albuquerque area for at least 12,000 years. Although there may have been earlier people, the first inhabitants whose presence is certain were roving hunters of mammoths, mastodons, and giant bison. Few skeletal remains of these PaleoIndians

(approximately 9500 B.C.-5500 B.C.) have been found in North America--none in the Albuquerque area, in spite of the 40-50 PaleoIndian sites identified in the Middle Rio Grande area (Cordell 1979:12-17).

After the large game animals became extinct, Desert Archaic people (approximately 5500 B.C.-A.D. 400) followed seasonal circuits of 100 miles or less, gathering plants and hunting and trapping animals from rabbit to deer size (Cordell 1979:23-33). Archaic sites are more numerous than PaleoIndian sites, but so far no burials from this time period have been identified in Bernalillo County.

Desert Archaic people may have been the remote ancestors of today's Pueblo Indians. As they became more intimately acquainted with plants and their habits, people began to cultivate gardens and slowly began to live in settled communities, though they continued some hunting and gathering for many hundreds of years (Cordell 1979:42-45). This era in prehistory is called Anasazi and is divided into Basketmaker (approximately A.D. 400-700) and Pueblo (A.D. 700-1600) periods. Anasazi villages followed different burial practices--some burying their dead in or near the villages and towns, others taking their dead a distance from the village and burying each person in isolation. Most archeological sites that have been recorded in Bernalillo County are Anasazi sites that date between A.D. 400 and 1600. Some village sites may contain burials, but locations of isolated burials are difficult to predict.

Coronado and his troops arrived from Mexico in 1540 and spent the winter at a pueblo village named Alcanfor between present Albuquerque and Sandia Pueblo (Simmons 1982:30 ff). They returned to Mexico in 1541. Only one site has been identified, LA 54147, the Spanish Expeditionary site on Coors Road (Vierra 1992), but a few burials of Coronado's personnel would seem to be a faint possibility.

The Diné, later known as the Navajo and Apache, arrived in the Southwest about the same time as Coronado or a little earlier, but they came from the north (Brugge 1983). Although an occasional scattered burial seems probable, none from the 1500s have been reported to date.

The Spaniards unwittingly brought European diseases like smallpox and measles to the New World, which decimated native populations. Many Pueblo survivors abandoned their villages and farmland and clustered together in the pueblos of Sandia, Isleta, Alameda, and Puaray. After it became apparent that Pueblo people could not be induced to return to their home villages, the Spanish Colonial government allowed settlers to move into the Albuquerque area. Twenty or more estancias had been established between Sandia and Isleta by the mid-1660s. In 1680 the Pueblo Rebellion resulted in many Spanish deaths. (See Simmons [1982:37-43] for a discussion of the Spanish Colonial era in and near Albuquerque.) Spanish, Pueblo, and Navajo burials from the 1660s-1680 period might be expected. After this time period and on into the 1900s, fewer Indian burials might be expected because of the devastation caused by the epidemics and the long, slow recovery of Indian populations to their present levels.

As Don Diego de Vargas brought Spanish settlers back to Santa Fe in 1693, some colonists left the party near Sandia and Alameda pueblos to establish, or re-establish, their homes. Atrisco, on the west bank of the Rio Grande, was recognized as a community in 1703 and Albuquerque was founded in 1706. Churches were soon constructed and burial grounds defined beside them or nearby. The original San Felipe de Neri, in Old Town, was begun in 1706. The Old San José Church on La Vega SW was constructed about 1750. By 1712 a string of villages had begun to form on the Elena Gallegos Grant north of Albuquerque. (See Simmons [1982:45-46, 81, 87, 89-91, 105-106].) At this point, most Spanish burials were probably placed in camposantos inside the churchyard or formal cemeteries outside the walls.

After New Mexico became part of the U.S. in 1846, settlers from the eastern states began flooding into New Mexico. Burials of these settlers can be expected in formal cemeteries and in a few scattered family cemeteries on ranches. As will be evident from the list of cemeteries below, some formal cemeteries from the post-1846 era have been discovered unexpectedly during construction projects.

III. CEMETERIES AND BURIALS DISCOVERED AS A RESULT OF CONSTRUCTION

In addition to known burials in cemeteries still active (or, at least, visible) today and probable burials in some archeological sites, many unsuspected graves exist in the Albuquerque area. Some may be burials from the ancient past that have been covered by blowing sand or water-borne alluvium. Others may once have been marked by now-disintegrated or vandalized wooden or stone markers. Some have been plowed under, built on, or paved over.

Excavations for construction of buildings and roads, installation of waterlines, sewers, and other utilities, or mining of gravel and fill sometimes uncover long forgotten burials. As of 1998, four cemeteries and 77 burials have been discovered in the general Albuquerque area as a result of construction. The oldest burials date to the A.D. 500-900 period. The youngest date to the 1912-1945 period. Some of the burials and one of the cemeteries were known or anticipated in advance of construction. The remainder of the burials and three of the cemeteries were discovered unexpectedly during construction.

IV. WHAT CAN BE LEARNED FROM CEMETERIES?

Constructing genealogies and tracing individual family histories from the inscriptions on headstones is perhaps the most important use of the information cemeteries hold, but there are many other things to be learned from cemeteries and burials.

Some of the earliest burials in the world go back at least 23,000 years to Upper Paleolithic times in Europe. One example is that of a burial of a man, a boy, and a girl found at Sungir, 125 miles north of Moscow (Renfrew and Bahn 1991:343). They had been buried with stone tools, small carvings of animals, spears and daggers made of mammoth tusk ivory, and thousands of ivory beads. The fact that the bodies had been deliberately buried--rather than simply being left where they died--and had been provided with objects they would have used on

earth reveals a religion and belief in a hereafter. Since the Upper Paleolithic, mortuary practices have taken a myriad of forms at different places and different times. Cemeteries have many secrets to tell in addition to names and dates on headstones.

The locations and sizes of cemeteries hint at the lifeway and settlement patterns of a region at a single point in time and of changes over the years. For example, small cemeteries widely scattered over grassy plains probably reflect single families living on isolated ranches. A formal burial ground containing dozens of graves may indicate that a Pueblo or Spanish village was once nearby. Large cemeteries bespeak larger towns and cities and often indicate the geographic expansion patterns of these communities.

Events in the history of a community are reflected in cemeteries. When there are many graves of children who died during the summer months, the children may have died during polio epidemics or they may have died from dysentery from drinking contaminated water. Epidemics like smallpox, the 1918 influenza, tuberculosis, and, more recently, AIDS, can be detected--as can disasters like earthquakes, floods, and mine cave-ins.

The characteristics of a community's population are visible in cemeteries. The arrivals of different ethnic groups and religions, increases and decreases in health and average lifespans, the waxing and waning of individual families, differences in poverty and wealth, access (or lack of it) to technologies and market goods from outside the local area can all be traced in cemeteries.

Cemeteries reveal what the community's people feel are appropriate surroundings for and monuments to their dead, from simple handmade markers among native grasses and shrubs cared for by families and the community to elaborate headstones and statuary of imported stone set in parks designed by landscape architects and maintained by grounds keepers. Gravestones and monuments from different periods record changes in styles and motifs as the community's tastes in cemetery art changed.

Community attitudes toward strangers and the indigent are revealed in cemeteries. These people may be buried in the same cemeteries as the rest of the community's dead, their graves cared for routinely by the community. Conversely, they may be relegated to Potter's Fields, which are ultimately forgotten, abandoned, disturbed, or paved over.

Differences in cultural attitudes toward the dead are divulged by cemeteries. In some cemeteries it is clear that the dead remain a part of the family and the community--graves are visited, maintained, and decorated several times throughout the year. Other cemeteries seem to reflect a separation between the living and the dead--graves are visited only occasionally and rarely decorated. Still others are never visited.

Finally, cemeteries disclose the presence of major environmental forces. In the Albuquerque and general Rio Grande area, it is possible to detect the limits of flooding by looking at a map (Fig. 1) of cemetery locations. Cemeteries are nearly always either up out of

the flood channel or are sited on high points within the channel but out of the water's reach. (Any that may have been imprudently located on the floodplain have presumably washed away, and histories of floods frequently mention coffins and human remains among things carried by flood waters.)

V. PRESERVING HISTORIC CEMETERIES

Full-scale preservation and restoration of historic cemeteries can be both expensive and time-consuming if the ravages of vandalism, weather, neglect, and environmental pollution are to be repaired. There are several useful publications on preservation of historic cemeteries. (Call the Historic Preservation Planner in the City Planning Office in Albuquerque or the State Historic Preservation Division in Santa Fe.)

However, less-than-heroic measures can make a major difference in the survival of old cemeteries. Keeping a cemetery tidy, picking up trash, nailing up a falling fence, and painting weathered wooden crosses (see Benino Cemetery and San José/El Rosario Cemetery, Albuquerque West 5 and 6, in "List of Cemeteries," below) are examples of simple steps that are inexpensive and take little time. A secret that museums discovered long ago is that vandalism can often be stopped before it starts if an area is maintained and looks as if someone cares about it and is watching over it. Some cemeteries have even encouraged families and office workers to picnic on the cemetery grounds or have converted old chapels into community centers and small museums to help encourage a sense of community ownership (the presence of people in a cemetery also helps to prevent vandalism).

VI. FEDERAL, STATE, COUNTY, AND CITY LEGISLATION

Legislation governing cemeteries and burials is briefly discussed here. The specific text of the three state laws is contained in Appendix A.

Federal. Sec. 6 of the Archeological Resources Protection Act of 1979 (amended 1988). Prohibits the excavation, removal, damage, alteration, or defacement of any archeological resource, including graves and human skeletal remains, on federal or Indian land. Penalties as high as \$20,000 and imprisonment for two years may be imposed.

State. Three State of New Mexico laws apply to burials, cemeteries, and tombs.

Unmarked burials. Unmarked burials are covered under the Cultural Properties Act, 18-6-11.2, NMSA 1978. This law applies to human burials that are not visibly marked on the surface of the ground. It applies to private land as well as state land, including land owned or operated by cities, counties, and municipalities). Knowingly excavating, removing, disturbing, or destroying any unmarked human burial is a felony and is punishable by a fine of up to \$5000 and imprisonment for 18 months, or both, unless a permit to excavate the burial(s) has been issued by the Cultural Properties Review Committee.

Disturbing a Marked Burial Ground, 30-12-12 NMSA 1978. The law applies to burials visibly marked according to traditional or customary practice in any church, church yard, cemetery, or marked burial ground. Unless an order has been issued by the district court, disturbing a marked burial ground is a felony and is punishable by a fine up to \$5000 or imprisonment for 18 months, or both.

Defacing Tombs, 30-12-13 NMSA 1978. Defacing tombs includes intentional damage to fences, posts, walls, plants, trees, and shrubs at any place of burial, in addition to memorials, markers, or funerary objects in any graveyard or cemetery. Defacing a tomb is punishable by a fine of up to \$1000 or imprisonment for one year, or both.

County of Bernalillo and City of Albuquerque. Both the County and the City adhere to the State laws regarding unmarked and marked burials and defacement of tombs.

VII. METHODOLOGY

A literature and archival search (see Item VIII, below) was conducted first (though new leads were followed up throughout the project, as they appeared). Cemeteries not already indicated on USGS 7.5' quads were plotted onto the quads. In order to allow additional cemeteries to be added as they were identified, each quad was considered a discrete entity and cemeteries on that quad were assigned a quad name and numerical designator (e.g., Alameda 1, Alameda 2). Individual work sheets were made up for each cemetery. Information recorded on the work sheet consisted of the items listed under each entry in the "List of Cemeteries by USGS Quad," below. Not all information was available for each cemetery. Zone and address information were derived from City and County zone and address atlases loaned to us for the project. For each cemetery, we indicated its numerical designator directly on a copy of the USGS map, scaled the UTM coordinates, and determined the legal descriptions. At this point, QRA met with Ed Boles and Matthew Schmader. At this meeting it was decided that QRA should visit selected cemeteries, take representative photographs, and note the general condition of each cemetery. At each cemetery visited, we first took black and white record photographs with a photo board. For photo record purposes, each USGS quad was assigned a numerical designator to replace its lexical designator (e.g., Alameda = 1, Albuquerque East = 2, etc.) Each cemetery retained its original numerical designator. Thus, the photo board for the Benino Cemetery reads "3-5," which stands for Albuquerque West 5. A color photo was immediately taken from the same location, with the photo board removed. Once the list of cemeteries was complete, City of Albuquerque Planning Department personnel consulted Bernalillo County records to determine ownership for cemeteries within Albuquerque's jurisdiction. (However, Oliver Winchell, Fairview Memorial Park, gave us ownership information for Fairview and for Sandia Memory Gardens.) Patricia Martinez-Apt, of the City's Geographic Information (AGIS) staff, produced the map presented here as Fig. 1.

VIII. LITERATURE AND ARCHIVAL SEARCH

This section recites the repositories searched and organizations and individuals queried. The detailed list is intended to preclude future researchers' having to cover the same ground over again.

Archeological Records Management Section (ARMS), Museum of New Mexico.

Louanna Haecker conducted a computer search of Bernalillo County for cemeteries. Cordelia Snow conducted a computer search for publications and reports. Snow suggested Lycett (1995) as a useful work on demography, settlement, and land use in the general Albuquerque area. Tim Seaman advised on conventions for use of Laboratory of Anthropology site numbers and site locations. Anna LaBauve attempted, in vain, to locate information on burials uncovered during construction of Interstate 25.

City of Albuquerque Planning Department. Inspected collection of maps from various sources. Contained several cemeteries.

MAGIC, Centennial Science and Engineering Library, University of New Mexico.

- USGS maps, old and recent. The USGS quads contained approximately 51 cemeteries. QRA searched the following 7.5' quads: Alameda, Albuquerque East, Albuquerque West, Arch Mesa, Belen, Benavidez Ranch, Bernalillo, Canoncito School, Chilili, Dalies, Dalies NW, Escabosa, Herrera, Hubbell Spring, Isleta, La Mesita Negra, La Mesita Negra SE, Loma Machete, Los Griegos, Los Lunas, Mount Washington, Placitas, Sandia Crest, Sandia Park, Sedillo, South Garcia (only a small fraction is in Bernalillo County), Tijeras, Tome, Volcano Ranch (quad name changed to "The Volcanoes," 1990), and Wind Mesa.

- Sanborn Insurance maps for 1891, 1893, 1898, and 1902. Spot checked from 1902 to 1957. Contained no cemeteries, except for large cemeteries like Fairview shown on index maps for locational context.

- Old and recent Bernalillo and Sandoval County maps. Contained no cemeteries.

- New Mexico State Highway and Transportation Department (NMSHTD) maps. Contained a few cemeteries.

- Aerials. After inspecting a few aerials, we abandoned the effort as unproductive.

State Records Center and Archives (SRCA). Shan Sutton, archivist, searched SRCA holdings for us. He said SRCA has very little information, but provided photocopies of several newspaper articles on cemeteries.

Bureau of Land Management (BLM) State Office, Santa Fe. With the assistance of Steve Byerline, Cadastral Survey, Senior Technical Specialist, BLM, we searched the entire General Land Office (GLO) holdings for the relevant townships and for the Alameda, Tomé, San Clemente, Nicolas Duran, Lo de Padilla, Town of Chilili, and Atrisco grants. The earliest map (Tomé Grant) dates to 1860. The GLO maps contained five cemeteries.

Center for Southwest Research, Zimmerman Library, University of New Mexico. Nancy Brown, archivist, searched the Center's holdings. She reports that they have only a few scattered items on cemeteries.

Albuquerque Public Library, Special Collections, 423 Central NE. This branch of the public library has no comprehensive list of cemeteries, but contains numerous genealogical publications and unpublished genealogical materials from all over the state, including detailed records of some cemeteries (copies of all headstone inscriptions, etc.).

Albuquerque telephone directory, 1998/1999. Not unexpectedly, the telephone directory contains names, addresses, and telephone numbers of current cemeteries.

American Automobile Association and other recent commercial city street maps. These maps contained a surprising number of cemeteries, several of which we had found through no other source.

New Mexico Genealogical Society. Ernie Jaskolski, President, provided us with a copy of the Bernalillo, Sandoval, and Valencia County sections of New Mexico Cemeteries: A Genealogical Guide (1997). The guide contained several cemeteries we had not identified and contained names of some we had identified but had no names for. The guide, which is available at Albuquerque Public Library, Special Collections (see above), also contains bibliographic information on publications for each cemetery and other useful references.

Office of Contract Archeology, University of New Mexico. Richard Chapman loaned us his reports and clippings file on cemeteries. He also recalled that burials were encountered during the construction of Interstate 25 and Martin Luther King Avenue. Beyond his memory, he had no information on these burials. Apparently, if formal removal of the burials by archeologists occurred, no reports were filed with ARMS (see above).

Albuquerque Museum. The museum has no information on cemeteries.

Albuquerque Historical Society. Ann Carson, President, says the Society has no information on cemeteries.

Archdiocese of Santa Fe. John Huchmala, head of property management, told us that large cemeteries are managed by the church cemetery association, but smaller cemeteries are managed by individual parishes. Parishes and telephone numbers (as of December 1998) are:

Tijeras, 281-2297 (Chilili, Escabosa, Sedillo, Carnuel, Cañoncito, San Antonio, San Antonito); Alameda, 898-5253; Bernalillo, 867-5252 (Placitas); Belen, 864-8043 (Tomé [865-7497], Los Lunas [865-7385], Peralta [869-2189]). Mr. Huchmala also mentioned a proposed new cemetery in the Paradise Hills area (see Los Griegos quad in "List of Cemeteries," below).

Historic Preservation Division, Santa Fe. Glenna Dean, State Archeologist, provided us with copies of State of New Mexico legislation governing burials and cemeteries. Dr. Dean also provided guidance on conventions for LA numbers and site locations and critiqued the draft report.

Bernalillo County Attorney. Tito Chavez told us the County follows State statutes regarding indigent burials, disturbing graves, etc. The County has no separate statutes.

City of Albuquerque Attorney. Ted Pearson said the City also follows State statutes and has no separate statutes or ordinances.

Individuals. QRA also consulted the following individuals: Mary Davis, former Historic Preservation Planner, City of Albuquerque; Kathy Hanlon, President, East Mountain Historical Society; Bruce Harrill, Albuquerque Area Archeologist, Bureau of Indian Affairs; Bob Leonard, Department of Anthropology, University of New Mexico; Peter McKenna, Archeologist, Bureau of Indian Affairs; Richard Melzer, Department of History, University of New Mexico-Valencia Campus; Kathryn Sargeant, Archeologist; Father Thomas J. Steele, S.J.; Zizi Terrasas, Strong-Thorne Mortuary; Jerrold Widdison, City of Albuquerque Public Works (also a geographer and historian); Oliver Winchell, Fairview Memorial Park.

IX. LIST OF CEMETERIES

List of Cemeteries by USGS 7.5' Quad (Note: UTM's are NAD 27)

USGS ALAMEDA, NM 7.5' QUAD, 1960/1967/1972

1. **Camposanto de San Ysidro**
Address: W of San Ysidro Church, Corrales
Legals: Unplatted
UTM's (Z 13): E352920 N3900000
Photos: 5 B/W & color (Figs. 3, 4, 5)
Photo board #: 1-1
Notes/comments: Good condition.
2. **San Carlos/Alameda Cemetery**
Zone Atlas page: C-17-Z
Zone: SU-1
Address Atlas page: C-17-A

Address: Alameda Blvd E of Edith Blvd, W of Washington Street (For location, see Fig. 1, #2.)

Owner: Archdiocese of Santa Fe, 4000 St. Joseph Place NW, Albuquerque, NM 87120.

Legals: Unplatted.

UTM's (Z 13): E354100 N3894380

Photos: 5 B/W & color (Figs. 6, 7, 8)

Photo board #: 1-2

Notes/comments: Good condition.

3. **Gate of Heaven Cemetery**

Zone Atlas page: D-19-Z

Zone: SU-1

Address Atlas page: D-19-A

Address: 7500 Paseo del Norte NE (For location, see Fig. 1, #8.)

Owner: Archdiocese of Santa Fe, 4000 St. Joseph Place NW, Albuquerque, NM 87120.

Legals: Unplatted

UTM's (Z 13): E357800 N3893140

Photos: 2 B/W & color (Fig. 9)

Photo board #: 1-3

Notes/comments: Good condition.

4. **Our Lady of Mt. Carmel Cemetery**

Zone Atlas page: D-16-Z

Zone: MH

Address Atlas page: D-16-A

Address: Between 7804 and 7810 Edith Blvd NE (For location, see Fig. 1, #13.)

Owner: Archdiocese of Santa Fe, 4000 St. Joseph Place NW, Albuquerque, NM 87120.

Legals: Unplatted

UTM's (Z 13): E352820 N3892700

Photos: 3 B/W & color (Figs. 10, 11)

Photo board #: 1-4

Notes/comments: Good condition. Chapel is on W side of Edith, cemetery is on E side.

5. **Alameda Pueblo/Alameda School Site, LA 421**

Address Atlas page: B-16-A

Address: 412 Alameda Blvd NW (For location, see Fig. 1, #1.)

Owner: Board of Education, Albuquerque Public Schools, P.O. Box 25704, Albuquerque, NM 87125-0704.

Legals: T11N R3E, apx. Sec. 10

UTM's (Z 13): E352700 N3895100

Notes/comments: A five-component archeological site, listed on the State Register of Cultural Properties on 2/28/86, underlies the Alameda Elementary School. The components consist of an Anasazi Pueblo III-IV village (A.D. 1100-1550), a Hispanic village that included a

church (A.D. 1500s-1680), two historic Pueblo occupations (A.D. 1539-1692 and A.D. 1702-1708), and a historic Euro-American residential complex dating from 1904. At least two graves are known to be associated with LA 421.

6. **Sandia Memory Gardens**

Zone Atlas page: B-18-Z

Zone: SU-1

Address Atlas page: B-18-A

Address: 9500 San Pedro Blvd NE (For location, see Fig. 1, #21.)

Owner: Loewen Group, 4126 Norland Ave., Burnaby, B.C., Canada V5G 3S8.

Legals: T11N R3E, Sec. 12 (projected)

UTM's (Z 13): E356500 N3895640

Photos: 3 B/W & color (Figs. 12, 13)

Photo board #: 1-10

Notes/comments: Generally good condition. Some vandalism.

7. **Unknown cemetery**

Zone Atlas page: B-15-Z

Address Atlas page: B-15-A

Address: N of Alameda Blvd, S of Golden Meadow Drive, E of Guadalupe Trail, W of 4th Street, at W edge of Chamisal Lateral (For location, see Fig. 1, #28.)

Owner: Steve P. and Colleen A. Gallegos, 502 Golden Meadow Drive NW, Albuquerque, NM 87114.

Legals: T11N R3E, Sec. 9

UTM's (Z 13): Approx. E353440 N3895320

Notes/comments: No visible evidence of this cemetery. There are now residences at this location--all along W bank of Chamisal Lateral. Also checked E bank--fields and houses.

8. **Romero Cemetery (private)**

Address: W of Edith Blvd near Ranchitos (For approximate location, see Fig. 1, #16.)

Notes/comments: Cannot locate on maps. Info from New Mexico Cemeteries: A Genealogical Guide, Ernie Jaskolski (New Mexico Genealogical Society), 1997.

USGS ALBUQUERQUE EAST, NM 7.5' QUAD, 1960/1967/1972

1. **Fairview Cemetery (now Fairview Memorial Park)**

Zone Atlas page: L-16-Z

Zone: SU-1

Address Atlas page: L-15-A, L-16-A

Address: 700 Yale Blvd SE (For location, see Fig. 1, #7.)

Owner: Loewen Group, 4126 Norland Ave., Burnaby, B.C., Canada V5G 3S8.

UTM's (Z 13): E352400 N3881900

Photos: 8 B/W, 7 color (Figs. 14, 15, 16, 17)

Photo board #: 2-1

Notes/comments: Good condition except for old section in NW quadrant, where severe vandalism has occurred and many trees and shrubs have died. (The cemetery is currently attempting to clean this area up.) Cemetery includes Congregation Albert Jewish section in the NE sector and St. George Greek Orthodox graves to the south. Bob Leonard, Department of Anthropology, University of New Mexico, gave us copies of old maps of Fairview (Fig. 2). Maps were apparently handed out to mourners. One section bears the legend "Fairview Park Cemetery/Your location-Sec. ___ Lot ___ Grave No. ___" (unreadable on our much-reduced figure). Oliver Winchell, of Fairview, does not know when these maps were produced, but told us the first interment in the cemetery was in 1881 (personal communication, August 27, 1999).

2. **Unknown cemetery at TVI, LA 47860**

Zone Atlas page: K-15-Z

Zone: SU-2, O-1

Address Atlas page: K-15-A

Address: 823 Buena Vista Drive SE (For location, see Fig. 1, #29.)

Owner: Board of Education, Albuquerque Public Schools, P.O. Box 25704, Albuquerque, NM 87125-0704.

Legals: T10N R3E Sec. 21, SE 1/4 SE 1/4 SE 1/4

UTM's (Z 13): E351910 N3882320

Notes/comments: Cemetery discovered during construction. Apparently dates A.D. 1912-1945. Is likely that additional burials are present.

USGS ALBUQUERQUE WEST, NM 7.5' QUAD, 1960/1967/1972

1. **U.S. Indian School Cemetery**

Zone Atlas page: H-13-Z

Address Atlas page: H-13-A

Address: 1401 Menaul Extension NW (For location, see Fig. 1, #24.)

Owner: County of Bernalillo, One Civic Plaza NW, Albuquerque, NM 87102.

UTM's (Z 13): E348720 N3886640

Photos: 2 B/W & color (Fig. 18)

Photo board #: 3-1

Notes/comments: Burials consist primarily of Zuni, Navajo, and Apache students who died at Albuquerque Indian School between 1882 and 1933. Now "4-H Park." No graves evident. Area is grassed and paved over, except for playground area in northwest corner.

2. **Sunset Memorial Park Cemetery**

Zone Atlas page: H-15-Z

Zone: SU-1, SU-2

Address Atlas page: H-15-A

Address: 924-C Menaul Blvd NE (For location, see Fig. 1, #23.)

Owner: Sunset Memorial Park, P.O. Box 94, Albuquerque, NM 87103-0094.

UTM's (Z 13): E351000 N3886000

Photos: 3 B/W & color (Figs. 19, 20)

Photo board #: 3-2

Notes/comments: Good condition.

3. **Mt. Calvary/Santa Barbara Cemetery**

Zone Atlas page: H-15-Z

Zone: SU-1, SU-2

Address Atlas page: H-17-A

Address: 1900 Edith Blvd NE (For location, see Fig. 1, #11.)

Owner: Archdiocese of Santa Fe, 4000 St. Joseph Place NW, Albuquerque, NM 87120.

UTM's (Z 13): E350900 N3885400

Photos: 4 B/W & color (Figs. 21, 22)

Photo board #: 3-3

Notes/comments: Good condition. Mt. Calvary is N portion, Santa Barbara is S portion. Santa Barbara was Albuquerque's main Catholic cemetery from the 1870's forward for several decades (Dewitt 1979).

4. **Santa Clara Cemetery**

Zone Atlas page: K-11-Z

Address Atlas page: K-11-A

Address: Approx. 2430 Foothill Road SW (For location, see Fig. 1, #22.)

Owner: Westland Development Co., Inc., 401 Coors Blvd NW, Albuquerque, NM 87105.

UTM's (Z 13): E345640 N3882400

Photos: 3 B/W & color (Figs. 23, 24)

Photo board #: 3-4

Notes/comments: No vandalism apparent, but is beginning to show signs of neglect.

5. **Benino Cemetery**

Zone Atlas page: L-15-Z

Address Atlas page: L-15-A

Address: NE quadrant of Interstate 25 & Gibson Blvd (For location, see Fig. 1, #3.)

Owner: Unknown (San José Parish?), 2401 Broadway SE, Albuquerque, NM 87102.

UTM's (Z 13): E350800 N3880740

Photos: 3 B/W & color (Figs. 25, 26)

Photo board #: 3-5

Notes/comments: Has been some neglect and some vandalism in the past. Recently there has been an almost single-handed effort by one man, Guillermo Padilla, to paint wooden crosses and clean out trash from this cemetery and the San José Cemetery across I-25 to the SW. Benino Cemetery may or may not be part of San Jose Cemetery diagonally across I-25/Gibson. (Unfortunately, Mr. Padilla died in August 1999.)

6. **San José/El Rosario Cemetery**
 Zone Atlas page: L-14-Z
 Zone: SU-1, SU-2
 Address Atlas page: L-14-A
 Address: 2300 Edith Blvd SE (SW quadrant of Interstate 25 & Gibson Blvd) (For location, see Fig. 1, #6.)
 Owner: Archdiocese of Santa Fe, 4000 St. Joseph Place NW, Albuquerque, NM 87120.
 UTM's (Z 13): E350400 N3880640
 Photos: 3 B/W & color (Figs. 27, 28)
 Photo board #: 3-6
 Notes/comments: San José is N portion, El Rosario is S portion. Regarding condition, see Benino Cemetery, above.
7. **San José de Armijo Cemetery**
 Zone Atlas page: M-10-Z
 Zone: A-1
 Address Atlas page: M-10-A
 Address: NW quadrant of Coors Blvd and Arenal Road (For location, see Fig. 1, #19.)
 Owner: Westland Development Co., Inc., 401 Coors Blvd NW, Albuquerque, NM 87105.
 UTM's (Z 13): E344020 N3880200
 Photos: 6 B/W & color (Figs. 29, 30, 31)
 Photo board #: 3-7
 Notes/comments: Good condition.
8. **El Evangelico Cemetery**
 Zone Atlas page: N-10-Z
 Address Atlas page: N-10-A
 Address: between 3804-3900 Blake Rd SW, approx. .5 mi W of Coors (For location, see Fig. 1, #5.)
 Owner: Westland Development Co., Inc., 401 Coors Blvd NW, Albuquerque, NM 87105.
 UTM's (Z 13): E343500 N3878280
 Photos: 3 B/W & color (Figs. 32, 33)
 Photo board #: 3-8
 Notes/comments: Those graves that remain are unvandalized. Appears to be an old cemetery. Many of the headstones--perhaps wooden--have probably disappeared or disintegrated.
9. **Mtn. View/Martinez Family Cemetery**
 Zone Atlas page: J-15-Z
 Address Atlas page: J-15-A
 Address: Approx. 1100 Legion Rd NE (E of I-25, N of Lomas, NE of I-25 on-ramp and

intersection of Lomas and Mt. Road) (For location, see Fig. 1, #10.)

Owner: Sandia Foundation, 700 Lomas Blvd NE, Albuquerque, NM 87102 and Joe R. Barreras et ux, 3325 Cuervo Drive NE, Albuquerque, NM 87110.

UTM's (Z 13): E351500 N3884280

Photos: 4 B/W & color (Figs. 34, 35)

Photo board #: 3-9

Notes/comments: Good condition, not vandalized but some deterioration.

10. **Unknown cemetery at San José Parish school and church**

Zone Atlas page: L-14-Z

Zone: SU-2

Address Atlas page: L-14-A

Address: 2401 Broadway SE (Address is for San José Parish, from Albuquerque telephone directory.) (For location, see Fig. 1, #26.)

Owner: Maria L. Soto, 2301 Broadway SE, Albuquerque, NM 87102.

Legals: T10N R3E Sec. 32, NW 1/4 NW 1/4 NE 1/4

UTM's (Z 13): E349820 N3880540

Notes/comments: This cemetery appears on "Plat of Small Holding Claims in Secs. 29, 32, and 33, T10N R3E, 1894 (mapping date), 1895 (accepted)." Map on file @ BLM, Santa Fe. Steve Byerline, Cadastral Surveyor, BLM, Santa Fe, told us that when he was running a survey line through this area several years ago, he found that the cemetery, which was W of the school and N of the church, is now under the parking lot, houses, etc.

11. **San Francisco/Candelaria Cemetery**

Zone Atlas page: M-14-Z

Zone: SU-1

Address Atlas page: M-14-A

Address: S of 610 Lace Road SE (W of South Diversion Canal, E of Broadway and Arno, S of Bethel Road, N of Woodward Road) (For location, see Fig. 1, #4.)

Owner: Archdiocese of Santa Fe, 4000 St. Joseph Place NW, Albuquerque, NM 87120.

Legals: T10N R3E Sec. 32, NW 1/4 SE 1/4 NE 1/4

UTM's (Z 13): E350200 N3880080

Photos: 5 B/W & color (Figs. 36, 37, 38)

Photo board #: 3-11

Notes/comments: Has been no apparent vandalism, but some headstones (perhaps wooden) have probably disappeared. Faded plastic flowers on a few graves indicate that graves have been tended in last year or two. Chapel shows on same 1894 GLO map as #10, above, near area where modern USGS quad shows gravel pit. No chapel present on 12/31/98.

12. **San Felipe de Neri Church, 1706 Cemetery, 1793-1854 Camposanto**

Zone Atlas page: J-13-Z

Zone: H-1

Address Atlas page: J-13-A

Address: 2005 N. Plaza NW, Old Town Plaza (For location, see Fig. 1, #17.)
 Owner: Archdiocese of Santa Fe, 4000 St. Joseph Place NW, Albuquerque, NM 87120
 (1793-1854 camposanto); public right-of-way (1706 cemetery).
 UTM's (Z 13): E347844 N3884851
 Photos: 1 B/W & color (Fig. 39)
 Photo board #: No photo board
 Notes/comments: Burials in 1706 cemetery in church yard and under Romero Street.
 Burials in 1793-1854 camposanto in present church yard. Probably burials under church floor.
 Church listed on State Register 2/20/76 and on National Register 10/1/69.

13. **San Felipe Parish Cemetery, 1854-1869**

Zone Atlas page: J-13-Z
 Zone: SU-1, S-MI, S-R.
 Address Atlas page: J-13-A.
 Address: Portions of 1801 and 1905 Mountain Road NW, 950 & 1000 18th St. NW + Explora Science Center and Children's Museum site, and 1311, 1321, 1323, 1335, 1401, 1403, 1405, 1406, and 1502 15th St. NW. (1801 Mountain Road NW is the NM Museum of Natural History.) (For location, see Fig. 1, #33.)
 Owner: Multiple.
 UTM's (Z 13): E348380 N3885060.
 Notes/comments: Steele (1983:75) reports that the Jesuits sold this cemetery to John Mann for his market garden in 1892. He planned to level the ground to accommodate his irrigation ditches, but agreed to move any bones he turned up to a common grave in the new cemetery. He ultimately plowed up two tons of bones, which were moved to the Santa Barbara Cemetery. Depending on the precise locations of Mann's garden plots, it seems possible that he may have missed a few bones.

14. **San Ignacio Church, LA 20187**

Zone Atlas page: J-15-Z
 Zone: SU-1, SU-2
 Address Atlas page: J-15-A
 Address: 1300 Walter Street NE (For location, see Fig. 1, #18.)
 Owner: Archdiocese of Santa Fe, 4000 St. Joseph Place NW, Albuquerque, NM 87120.
 UTM's (Z 13): E350740 N3884630
 Photos: 1 B/W & color (Fig. 40)
 Photo board #: No photo board
 Notes/comments: There is no longer a cemetery near the church. The National Register nomination prepared by Susan Dewitt in May 1979 indicates that the location had been designated as "Old Grave Yard" on city plat maps as early as 1898. When the site was selected for construction of San Ignacio Church in 1914, burials were moved to the Santa Barbara Cemetery. Although there is no evidence of them, it seems possible that a few scattered graves could still exist in the area. Church listed on State Register 8/20/77 and on National Register 8/21/79.

15. **Unknown cemetery, LA 49791, east of St. Joseph's Hospital.**
 Zone Atlas page: J-15-Z, K-15-Z
 Zone: SU-1
 Address Atlas page: K-15-A
 Address: Approx. 505 Elm St. (For location, see Fig. 1, #25.)
 Owner: City of Albuquerque, P.O. Box 1293, Albuquerque, NM 87102.
 UTM's (Z 13): E350740 N3883570
 Notes/comments: Discovered during construction project. LA 49791 recorded as Hispanic cemetery, A.D. 1846-1912.
16. **Unknown cemetery on Ernie Pyle Middle School grounds**
 Address Atlas page: M-12-A
 Address: 1920 Valdora Ave. SW (For location, see Fig. 1, #27.)
 Owner: Board of Education, Albuquerque Public Schools, P.O. Box 25704, Albuquerque, NM 87125-0704.
 Legals: T10N R2E Sec. 36
 UTM's (Z 13): E346420 N3879660
 Notes/comments: No evidence of cemetery 12/31/98
17. **Old San José Church (and burial ground)**
 Zone Atlas page: N-13-Z
 Address Atlas page: N-13-A
 Address: 2100 La Vega Drive SW (For location, see Fig. 1, #12.)
 Owner: Westland Development Co., Inc., 401 Coors Blvd NW, Albuquerque, NM 87105.
 UTM's (Z 13): E347580 N3878640
 Photos: None (see "Notes/comments," below)
 Notes/comments: The church and grounds are in good condition. Juan Sandoval, who is in charge of the church, told us the church was built about 1750. Mr. Sandoval asked that no photographs be taken of the church. There are apparently burials, but no markers, in the churchyard. There may be graves extending outside the property. Neighbors told us of several burials that had been discovered during various construction projects.

USGS BELEN, NM 7.5' QUAD, 1952/1979

1. **Unknown cemetery west of Los Chavez**
 Address: Approx. .5 mi E of I-25, approx. 1.25 mi W of Los Chavez
 Legals: Unplatted, Nicolas Duran de Chavez Grant
 UTM's (Z 13): Approx. E337280 N3844600
2. **Terrace Grove Cemetery**
 Address: In Belen, immediately E of Belen Ditch
 Legals: Unplatted, Belen Grant

UTM's (Z 13): Approx. E336520 N3837860

3. **Our Lady of Belen/Our Lady of Hope Cemetery**

Address: In Belen, W of NM-314

Legals: Unplatted, Belen Grant

UTM's (Z 13): Approx. E336600 N3836920

USGS BERNALILLO, NM 7.5' QUAD, 1954/1972

1. **Indian Mission Cemetery**

Address: NM-44 and NM-528

Legals: T13N R3E Sec. 25, NW 1/4 SE 1/4 NE 1/4

UTM's (Z 13): E357320 N3910600

2. **Our Lady of Sorrows/Bernalillo Cemetery**

Address: In Bernalillo

Legals: Unplatted

UTM's (Z 13): E360500 N3908920

3. **Perea Family Cemetery**

Address: .25 mi W of I-25, .2 mi S of NM-44, immediately W of RR tracks

Legals: Unplatted

UTM's (Z 13): E360080 N3908820

USGS CHILILI, NM 7.5' QUAD, 1954

1. **Chilili Cemetery**

Address: Approx. .5 mi SE of Chilili, E side of NM-337

Legals: Unplatted, Chilili Grant

UTM's (Z 13): E388320 N3860860

2. **St. John Nepomucene Church, LA 847**

Address: In Chilili

Legals: Unplatted, Chilili Grant

UTM's (Z 13): E387600 N3861080

Notes/comments: Part of LA 847, Village of Chilili. Anasazi features and artifact scatter, roomblock, midden, burials, A.D. 900-1600. Hispanic residential complex, midden, structure foundation, church, A.D. 1616-1675. Hispanic residential complex, church (St. John Nepomucene church) A.D. 1841+.

USGS ESCABOSA, NM 7.5' QUAD, 1954/1974

1. **Escabosa Cemetery**

Address: Approx. .75 mi E of Escabosa

Legals: T8N R6E Sec. 14, NE 1/4 NE 1/4 NW 1/4

UTM's (Z 13): E383000 N3865340

2. **Miera Cemetery**

Address: Jaskolski (1997:4) lists as "10 mi S of Tijeras on NM 337, on E side of road."

(See "Notes/comments," below)

Legals: T9N R6E Sec. 27, SW 1/4 SW 1/4 SW 1/4; Sec. 28, SE 1/4 SE 1/4 SE 1/4

(these legals are for Miera, not the cemetery)

UTM's (Z 13): E381700 N3870100 (UTM's are for Miera, not cemetery)

Notes/comments: NM State Highway & Transportation Department Manzano Mountains quad (#54), ca. 1980, shows large cemetery (approx. .5 mi E/W by .25 mi N/S) in T9N R6E Sec. 29, S 1/2 SE 1/4. Cemetery is approx. 1 mi W of Miera and .25 mi S of NM-337. This cemetery appears on no other maps that we found, including the USGS Escabosa 1954/1974 and 1991 7.5' quads. This may not be the same cemetery Jaskolski lists.

USGS HERRERA, NM 7.5' QUAD, 1954

1. **Herrera Cemetery**

Address: Community of Herrera

Legals: T11N R3W Sec. 12, NW 1/4 SW 1/4 SE 1/4 (.5 mi E of Herrera)

UTM's (Z 13): E308340 N3896260

Notes/comments: This may be part of LA 5189 (E307402 N3896415). LA 5189 site form lists church and cemetery. Church, on Herrera quad, shown as "Capilla de San Ignacio," approx. 1000 m W of cemetery.

USGS HUBBELL SPRING, NM 7.5' QUAD, 1952/1967/1974

1. **Unknown cemetery, Hell's Canyon Wash**

Address: On S bank of Hell's Canyon Wash, approx. .95 mi S of Bernalillo-Valencia County line, on Isleta Pueblo Grant

Legals: T8N R4E Sec. 28, NE 1/4 NW 1/4 SW 1/4

UTM's (Z 13): E360200 N3861800

USGS ISLETA, NM 7.5' QUAD, 1952/1967/1974

1. **Pajarito Cemetery**

Zone Atlas page: R-10-Z

Zone: A-1

Address Atlas page: R-10-A

Address: SW of Coors Blvd and Pajarito Road (For location, see Fig. 1, #14.)
 Owner: Archdiocese of Santa Fe, 4000 St. Joseph Place NW, Albuquerque, NM 87120.
 Legals: Unplatted, Pajarito Grant
 UTM's (Z 13): E343060 N3873160

2. **Los Padillas Cemetery**

Address Atlas page: T-10-A
 Address: SW of Coors Blvd and Los Padillas Road (For location, see Fig. 1, #9.)
 Owner: Archdiocese of Santa Fe, 4000 St. Joseph Place NW, Albuquerque, NM 87120.
 Legals: T8N R2E Sec. 3, N 1/2 NW 1/4 NE 1/4
 UTM's (Z 13): E343300 N3869320

3. **Isleta Catholic Cemetery**

Address: Approx. .5 mi S of Isleta plaza, .25 mi SE of fork in AT&SF RR tracks, W of Isleta Drain and Belen Highline Canal
 Legals: T8N R2E Sec. 23, SE 1/4 NW 1/4 SE 1/4, SW 1/4 NE 1/4 SE 1/4, NW 1/4 SE 1/4 SE 1/4, NE 1/4 SW 1/4 SE 1/4
 UTM's (Z 13): E344980 N3863400

4. **San Augustin de Isleta Church**

Address: On Isleta Pueblo plaza
 Legals: T8N R2E Sec. 23, NE 1/4 SE 1/4 NE 1/4
 UTM's (Z 13): E345380 N3864080
 Notes/comments: Church is part of LA 724, Isleta Pueblo. Anasazi component, A.D. 1300-1600. Pueblo residential complex, roomblock, midden, A.D. 1700-present. Hispanic residential complex, A.D. 1700-1821. Under-floor burials may be present in church.

5. **Pajarito Church**

Address: NE of Coors Blvd and Pajarito Rd. (For location, see Fig. 1, #15.)
 Owner: County of Bernalillo, One Civic Plaza NW, Albuquerque, NM 87102.
 Legals: Unplatted, Pajarito Grant
 UTM's (Z 13): E345260 N3872720
 Notes/comments: May be burials associated with this church.

USGS LOMA MACHETE, NM 7.5' QUAD, 1954/1972

1. **Vista Verde Memorial Park**

Address: 4310 Sara Road SE, Rio Rancho, 87124
 Notes/comments: Not plotted on USGS Loma Machete quad. Name and address from Albuquerque telephone directory.

USGS LOS GRIEGOS, NM 7.5' QUAD, 1960/1967/1972

1. **Sanchez Cemetery**

Zone Atlas page: F-15-Z

Address Atlas page: F-15-A

Address: East of 5154 Edith Blvd NE (For location, see Fig. 1, #20.)

Owner: Archdiocese of Santa Fe, 4000 St. Joseph Place NW, Albuquerque, NM 87120.

UTM's (Z 13): E351840 N3888760

2. **Nativity of Our Blessed Virgin Church and Cemetery (old)**

Zone Atlas page: B-15-Z

Address Atlas page: B-15-A

Address: 9709 Rio Grande Blvd NW and surrounding area (For location, see Fig. 1, #30.)

Owner: John M. and Geneva P. Sena, 9709 Rio Grande Blvd NW, Albuquerque, NM 87114.

UTM's (Z 13): E351360 N3895640

Notes/comments: Kit Sargeant identified the probable location of this cemetery. She and Matt Schmader had been called several years ago when human bone was revealed during trenching for a utility line in the road right-of-way to the east and slightly north of 9709 Rio Grande NW. QRA and Sargeant visited the location and interviewed John Sena on 3/30/99. He told us he had found two skulls (one in 1997, one in 1998) while he was digging post holes for a fence around his horse corral. Sena has found no evidence of adobe walls or rock foundations on his property. Thus, the location of the church is not certain, but it seems probable that the cemetery underlies John Sena's horse corral and Rio Grande Boulevard north of Alameda.

3. **Ranchos de Albuquerque Church and Cemetery, pre-1903**

Zone Atlas page: E-14-Z

Zone: A-1

Address Atlas page: E-14-A

Address: 5824 El Prado NW (For location, see Fig. 1, #32.)

Owner: Dennis G. Barela et ux, 5824 El Prado NW, Albuquerque, NM 87107.

UTM's (Z 13): E349220 N3891760

Notes/comments: The Ranchos de Albuquerque Church was largely destroyed in the flood of 1903. Kit Sargeant showed us the location on El Prado, where a mound still stands in a residential yard. The late Mr. Jenkins, who had owned what is probably the old Los Ranchos Plaza, showed Ms. Sargeant the location some years ago. He told her that stubs of adobe walls had been standing when he was requested to knock them down in order to build a causeway through the property.

4. **Unknown shrine and/or cemetery at Rio Grande and Chamisal**

Address Atlas page: D-14-A

Address: Approx. 7419 Rio Grande Blvd NW (SW quadrant of Rio Grande/Chamisal

intersection) (For location, see Fig. 1, #31.)

Owner: Lionel Ortega, P.O. Box 10250, Albuquerque, NM 87184.

UTM's (Z 13): E349800 N3892820

Notes/comments: Kit Sargeant also showed QRA this location. She says that people in Los Ranchos say there used to be a shrine and/or cemetery here.

5. **Unnamed proposed cemetery, Paradise Hills**

Zone Atlas page: Approx. B-8-Z, B-9-Z

Address: Bernalillo Co.

Notes/comments: 12/8/98 - John Huchmala, Property Management, Archdiocese of Santa Fe, says church is attempting to establish 40-ac cemetery @ intersection of Atrisco gas pipeline (Atrisco/Unser) and proposed Boulevard de la Oeste, W of Paradise Hills.

USGS LOS LUNAS, NM 7.5' QUAD, 1952/1971/1974

1. **Peralta/Honey Field Farm/Spanish Methodist Cemetery**

Address: Approx. 1.65 mi E of Peralta, approx. .4 mi E of the Chical Lateral.

Legals: T7N R3E Sec. 7, E 1/2 SW 1/4 SE 1/4

UTM's (Z 13): E348000 N3856700

2. **San Antonio de Los Lentos Cemetery**

Address: 1 mi N of Los Lunas

Legals: Unplatted, San Clemente Grant

UTM's (Z 13): E340800 N3854300

3. **Peralta and Valencia Cemetery**

Address: Approx. .2 mi N of S boundary of Peralta Tract, Lo de Padilla Grant and .25 mi E of Middle Ditch and Chical Lateral

Legals: T7N R3E Sec. 19, all 1/4's SE 1/4 SW 1/4

UTM's (Z 13): E347480 N3853500

4. **Sangre de Cristo Churchyard Cemetery**

Address: Adjacent to Valencia Church, immediately N of Valencia "Y"

Legals: T7N R2E Sec. 26, SW 1/4 NW 1/4 NE 1/4

UTM's (Z 13): E344540 N3853060

5. **San Clemente/Old Los Lunas Cemetery**

Address: SE quadrant of intersection of NM-6 and NM-314

Legals: Unplatted, San Clemente Grant

UTM's (Z 13): E341340 N3852700

6. **El Camposanto de La Liverta**

Legals: T7N R2E Sec. 36, SE 1/4 SE 1/4 NE 1/4

UTM's (Z 13): E346780 N3850920

7. **San Clemente Cemetery**

Address: .5 mi W of U.S. 85 & NM-6, .2 mi S of NM-6

UTM's (Z 13): E340620 N3853160

USGS PLACITAS, NM 7.5' QUAD, 1954

1. **Algodones Cemetery**

Legals: T13N R4E Sec. 11, W 1/2 SE 1/4 NE 1/4 & E 1/2 SW 1/4 NE 1/4

UTM's (Z 13): E365360 N3915000

2. **Catholic Cemetery**

Address: In Placitas, S side of NM-165

Legals: Unplatted, San Antonio de Las Huertas Grant

UTM's (Z 13): E370540 N3908100

3. **Presbyterian Cemetery**

Address: 1 mi W of Placitas, N of NM-165

Legals: T13N R5E Sec. 31, NE 1/4 SE 1/4 SE 1/4 (projected)

UTM's (Z 13): E368820 N3907960

USGS SANDIA CREST, NM 7.5' QUAD, 1961/1967/1972

1. **Cañoncito Cemetery**

Address: 4 mi N of Tijeras on NM-14, 2 mi E on Cañoncito

Legals: T11N R5E Sec. 35, SW 1/4 SE 1/4 NW 1/4

UTM's (Z 13): E374400 N3888720

Notes/comments: Shown on "Plat of Secs. 35 and 36 of T11N R5E..., Showing Small Holding Claims (Duplicate, filed 1895)." On file at BLM, Santa Fe.

USGS SANDIA PARK, NM 7.5' QUAD, 1954/1976

1. **San Antonito Church and Cemetery**

Address: In San Antonito, 6 mi N of Tijeras in NW quadrant of intersection of NM-14, NM-536 (to W), and NM-306 (to E)

Legals: T11N R6E Sec. 19, SW & SE 1/4's SW 1/4 NW 1/4

UTM's (Z 13): E377320 N3891820

Photos: 4 B/W & color (Figs. 41, 42)

Photo board #: 16-1

Notes/comments: Church and cemetery listed on State Register 9/27/96 (SR #1643). Listed on National Register 1/16/97.

2. **La Madera Cemetery**
Address: Approx. 1 mi NNW of La Madera
Legals: T12N R5E Sec. 25
UTM's (Z 13): E375260 N3900000

USGS SEDILLO, NM 7.5' QUAD, 1954/1976

1. **Sedillo Cemetery**
Address: In town of Sedillo
Legals: T10N R6E Sec. 10, SW 1/4 SW 1/4 SW 1/4
UTM's (Z 13): E382020 N3884700
2. **Juan Tomás Cemetery**
Address: 5 mi S of Tijeras on NM-337, 3 mi E of NM-337, W of Juan Tomás, on S side of road
Legals: T9N R6E Sec. 4, SW & SE 1/4's SW 1/4 SE 1/4
UTM's (Z 13): E381220 N3876680
3. **Cedro Cemetery**
Address: 6 mi S of Tijeras on NM-337
Legals: T9N R5E Sec. 12, SW 1/4 NW 1/4 NE 1/4
UTM's (Z 13): E376400 N3876380

USGS TIJERAS, NM 7.5' QUAD, 1961/1967/1972

1. **San Antonio Cemetery**
Address: 2 mi N of Tijeras on NM-14
Legals: T10N R5E Sec. 11, SW 1/4 NE 1/4 SW 1/4
UTM's (Z 13): E374520 N3885200 (LA form shows LA 24 as E374400 N3884895)
Notes/comments: Appears on "Small Holding Claims in Sec. 11, T10N R5E, surveyed in 1908." On file at BLM, Santa Fe. Built on top of Anasazi archeological site, but also considered a component of the site. LA 24, also known as San Antonio, San Antonio de Padua, and San Antonio de Padua de Carnue, consists of an Anasazi Pueblo III-IV village (A.D. 1100-1600) and a historic Hispanic village. Listed on State Register 10/3/75.
2. **Tijeras Cemetery**
Legals: T10N R5E Sec. 22, SE 1/4 NW 1/4 SE 1/4
UTM's (Z 13): E373360 N3882180
Notes/comments: Tijeras Church (to N of cemetery) appears on "Amended Plat of T10N R5E..., surveyed between 1880 and 1901." On file at BLM, Santa Fe.
3. **Carnuel/Santo Niño Cemetery**
Legals: Apx. T10N R4E Sec. 25

UTM's (Z 13): E366240 N3880320

Notes/comments: Built on top of an Anasazi village and considered one component of the site. LA 10796 consists of an Anasazi Pueblo III-IV village (A.D. 1100-1600) and a historic Hispanic settlement.

4. **Holy Child Church**

Legals: T10N R5E Sec. 22, SW 1/4 SW 1/4 NE 1/4

UTM's (Z 13): E373290 N3882560

Notes/comments: Built on top of Anasazi site and considered one component of the site. LA 20193 consists of an Anasazi Pueblo II-III site (A.D. 1050-1300) and a Hispanic residential complex, A.D. 1912-present.

USGS TOME, NM 7.5' QUAD, 1952/1979

1. **Tomé Catholic Cemetery**

Address: In Tomé

Legals: Unplatted, Tomé Grant

UTM's (Z 13): E341680 N3845560

2. **Unknown cemetery, Tomé**

Address: In Tomé

Legals: Unplatted, Tomé Grant

UTM's (Z 13): E341460 N3845260

3. **Tomé Cemetery**

Address: Approx. .25 mi SE of El Cerro

Legals: Unplatted, Tomé Grant

UTM's (Z 13): E343700 N3843600

List of Cemeteries by County (Note: Postscript entries, e.g., Alameda 5, Tijeras 3, refer to the cemetery's designation in the listing by USGS quad, above. Cemeteries that have more than one name are listed under all designations.)

BERNALILLO COUNTY

Alameda Pueblo/Alameda School Site, LA 421. Alameda 5.

Alameda/San Carlos Cemetery. Alameda 2.

Benino Cemetery. Albuquerque West 5.

Candelaria/San Francisco Cemetery. Albuquerque West 11.

Cañoncito Cemetery. Sandia Crest 1.

Carnuel/Santo Niño Cemetery. Tijeras 3.

Cedro Cemetery. Sedillo 3.

Chilili Cemetery. Chilili 1.

El Evangelico Cemetery. Albuquerque West 8.
 El Rosario/San José Cemetery. Albuquerque West 6.
 Escabosa Cemetery. Escabosa 1.
 Fairview Cemetery. Albuquerque East 1.
 Gate of Heaven Cemetery. Alameda 3.
 Herrera Cemetery. Herrera 1.
 Holy Child Church. Tijeras 4.
 Isleta Catholic Cemetery. Isleta 3.
 Juan Tomás Cemetery. Sedillo 2.
 Los Padillas Cemetery. Isleta 2.
 Martinez Family/Mt. View Cemetery. Albuquerque West 9.
 Miera Cemetery. Escabosa 2.
 Mt. Calvary/Santa Barbara Cemetery. Albuquerque West 3.
 Mtn. View/Martinez Family Cemetery. Albuquerque West 9.
 Nativity of Our Bless Virgin Church and Cemetery (old). Los Griegos 2.
 Old San José Church (on La Vega SW). Albuquerque West 17.
 Our Lady of Mt. Carmel Cemetery. Alameda 4.
 Pajarito Cemetery. Isleta 1.
 Pajarito Church. Isleta 5.
 Ranchos de Albuquerque Church and Cemetery (probable location). Los Griegos 3.
 Romero Cemetery. Alameda 8.
 San Antonio Cemetery. Tijeras 1.
 San Antonito Church and Cemetery. Sandia Park 1.
 San Augustin de Isleta Church. Isleta 4.
 San Carlos/Alameda Cemetery. Alameda 2.
 San Felipe de Neri Church, 1706 cemetery, and 1793-1854 Camposanto. Albuquerque West 12.
 San Felipe Parish Cemetery, 1854-1869. Albuquerque West 13.
 San Francisco/Candelaria Cemetery. Albuquerque West 11.
 San Ignacio Church (LA 20187): Albuquerque West 14.
 San José de Armijo Cemetery. Albuquerque West 7.
 San José/El Rosario Cemetery. Albuquerque West 6.
 Sanchez Cemetery. Los Griegos 1.
 Sandia Memory Gardens, Alameda 6.
 Santa Barbara & Mt. Calvary Cemetery. Albuquerque West 3.
 Santa Clara Cemetery. Albuquerque West 4.
 Santo Niño/Carnuel Cemetery. Tijeras 3.
 Sedillo Cemetery. Sedillo 1.
 St. John Nepomucene Church, LA 847. Chilili 2.
 Sunset Memorial Park Cemetery. Albuquerque West 2.
 Tijeras Cemetery. Tijeras 2.
 U.S. Indian School Cemetery. Albuquerque West 1.
 Unknown cemetery E of St. Joseph's Hospital, LA 49791. Albuquerque West 15.
 Unknown cemetery at San José Parish (school and church). Albuquerque West 10.

Unknown cemetery on Ernie Pyle Middle School grounds. Albuquerque West 16.
 Unknown cemetery N of Alameda, S of Golden Meadow, E of Guadalupe Trail, and W of 4th
 Street and the Chamisal Lateral. Alameda 7.
 Unknown cemetery at TVI, LA 47860. Albuquerque East 2.
 Unknown possible shrine/cemetery at Rio Grande and Chamisal. Los Griegos 4.
 Unnamed proposed cemetery, Paradise Hills. Los Griegos 5.

SANDOVAL COUNTY

Algodones Cemetery. Placitas 1.
 Bernalillo/Our Lady of Sorrows Cemetery. Bernalillo 2.
 Camposanto de San Ysidro. Alameda 1.
 Catholic Cemetery. Placitas 2.
 Indian Mission Cemetery. Bernalillo 1.
 La Madera Cemetery. Sandia Park 2.
 Our Lady of Sorrows/Bernalillo Cemetery. Bernalillo 2.
 Perea Family Cemetery. Bernalillo 3.
 Presbyterian Cemetery. Placitas 3.
 San Ysidro, Camposanto de. Alameda 1.
 Vista Verde Memorial Park. Loma Machete 1.

VALENCIA COUNTY

El Camposanto de La Liverta. Los Lunas 6.
 Honey Field Farm/Peralta/Spanish Methodist Cemetery. Los Lunas 1.
 La Liverta, El Camposanto de. Los Lunas 6.
 Los Lentes, San Antonio de. Los Lunas 2.
 Old San Clemente/Old Los Lunas Cemetery. Los Lunas 5.
 Old Los Lunas/Old San Clemente Cemetery. Los Lunas 5.
 Our Lady of Belen/Our Lady of Hope Cemetery. Belen 3.
 Our Lady of Hope/Our Lady of Belen Cemetery. Belen 3.
 Peralta and Valencia Cemetery. Los Lunas 3.
 Peralta/Honey Field Farm/Spanish Methodist Cemetery. Los Lunas 1.
 San Antonio de Los Lentes Cemetery. Los Lunas 2.
 San Clemente Cemetery. Los Lunas 7.
 Sangre de Cristo Churchyard Cemetery. Los Lunas 4.
 Spanish Methodist/Peralta/Honey Field Farm Cemetery. Los Lunas 1.
 Terrace Grove Cemetery. Belen 2.
 Tomé Catholic Cemetery. Tome 1.
 Tomé Cemetery. Tome 3.
 Unknown cemetery, Tomé. Tome 2.
 Unknown cemetery W of Los Chavez. Belen 1.
 Unknown cemetery, Hell's Canyon Wash. Hubbell Spring 1.

Alphabetized List of Cemeteries (Note: Cemeteries that have more than one name are listed under all names.)

Alameda Pueblo/Alameda School Site, LA 421. Alameda 5. Bernalillo Co.
 Alameda/San Carlos Cemetery. Alameda 2. Bernalillo Co.
 Algodones Cemetery. Placitas 1. Sandoval Co.
 Benino Cemetery. Albuquerque West 5. Bernalillo Co.
 Bernalillo/Our Lady of Sorrows Cemetery. Bernalillo 2. Sandoval Co.
 Camposanto de San Ysidro. Alameda 1. Sandoval Co.
 Candelaria/San Francisco Cemetery. Albuquerque West 11. Bernalillo Co.
 Cañoncito Cemetery. Sandia Crest 1. Bernalillo Co.
 Carnuel/Santo Niño Cemetery. Tijeras 3. Bernalillo Co.
 Catholic Cemetery. Placitas 2. Sandoval Co.
 Cedro Cemetery. Sedillo 3. Bernalillo Co.
 Chilili Cemetery. Chilili 1. Bernalillo Co.
 El Camposanto de La Liverta. Los Lunas 6. Valencia Co.
 El Evangelico Cemetery. Albuquerque West 8. Bernalillo Co.
 El Rosario/San José Cemetery. Albuquerque West 6. Bernalillo Co.
 Escabosa Cemetery. Escabosa 1. Bernalillo Co.
 Fairview Cemetery. Albuquerque East 1. Bernalillo Co.
 Gate of Heaven Cemetery. Alameda 3. Bernalillo Co.
 Herrera Cemetery. Herrera 1. Bernalillo Co.
 Holy Child Church. Tijeras 4. Bernalillo Co.
 Honey Field Farm/Peralta/Spanish Methodist Cemetery. Los Lunas 1. Valencia Co.
 Indian Mission Cemetery. Bernalillo 1. Sandoval Co.
 Isleta Catholic Cemetery. Isleta 3. Bernalillo Co.
 Juan Tomás Cemetery. Sedillo 2. Bernalillo Co.
 La Madera Cemetery. Sandia Park 2. Sandoval Co.
 La Liverta, El Camposanto de. Los Lunas 6. Valencia Co.
 Los Lentos, San Antonio de. Los Lunas 2. Valencia Co.
 Los Padillas Cemetery. Isleta 2. Bernalillo Co.
 Martinez Family/Mt. View Cemetery. Albuquerque West 9. Bernalillo Co.
 Miera Cemetery. Escabosa 2. Bernalillo Co.
 Mt. Calvary/Santa Barbara Cemetery. Albuquerque West 3. Bernalillo Co.
 Mtn. View/Martinez Family Cemetery. Albuquerque West 9. Bernalillo Co.
 Nativity of Our Blessed Virgin Church and Cemetery (old). Los Griegos 2. Bernalillo Co.
 Old Los Lunas/Old San Clemente Cemetery. Los Lunas 5. Valencia Co.
 Old San Clemente/Old Los Lunas Cemetery. Los Lunas 5. Valencia Co.
 Old San José Church (on La Vega SW). Albuquerque West 17. Bernalillo Co.
 Our Lady of Belen/Our Lady of Hope Cemetery. Belen 3. Valencia Co.
 Our Lady of Hope/Our Lady of Belen Cemetery. Belen 3. Valencia Co.
 Our Lady of Mt. Carmel Cemetery. Alameda 4. Bernalillo Co.
 Our Lady of Sorrows/Bernalillo Cemetery. Bernalillo 2. Sandoval Co.

Pajarito Cemetery. Isleta 1. Bernalillo Co.
 Pajarito Church. Isleta 5. Bernalillo Co.
 Peralta and Valencia Cemetery. Los Lunas 3. Valencia Co.
 Peralta/Honey Field Farm/Spanish Methodist Cemetery. Los Lunas 1. Valencia Co.
 Perea Family Cemetery. Bernalillo 3. Sandoval Co.
 Presbyterian Cemetery. Placitas 3. Sandoval Co.
 Ranchos de Albuquerque Church/Cemetery (probable location). Los Griegos 3. Bernalillo Co.
 Romero Cemetery. Alameda 8. Bernalillo Co.
 San Antonio Cemetery. Tijeras 1. Bernalillo Co.
 San Antonio de Los Lentes Cemetery. Los Lunas 2. Valencia Co.
 San Antonito Church and Cemetery. Sandia Park 1. Bernalillo Co.
 San Augustin de Isleta Church. Isleta 4. Bernalillo Co.
 San Carlos/Alameda Cemetery. Alameda 2. Bernalillo Co.
 San Clemente Cemetery. Los Lunas 7. Valencia Co.
 San Felipe de Neri Church, 1706 Cemetery, and 1793-1854 Camposanto. Albuquerque West
 12. Bernalillo Co.
 San Felipe Parish Cemetery, 1854-1869. Albuquerque West 13. Bernalillo Co.
 San Francisco/Candelaria Cemetery. Albuquerque West 11. Bernalillo Co.
 San Ignacio Church (LA 20187). Albuquerque West 14. Bernalillo Co.
 San José de Armijo Cemetery. Albuquerque West 7. Bernalillo Co.
 San José/El Rosario Cemetery. Albuquerque West 6. Bernalillo Co.
 San Ysidro, Camposanto de. Alameda 1. Sandoval Co.
 Sanchez Cemetery. Los Griegos 1. Bernalillo Co.
 Sandia Memory Gardens, Alameda 6. Bernalillo Co.
 Sangre de Cristo Churchyard Cemetery. Los Lunas 4. Valencia Co.
 Santa Barbara & Mt. Calvary Cemetery. Albuquerque West 3. Bernalillo Co.
 Santa Clara Cemetery. Albuquerque West 4. Bernalillo Co.
 Santo Niño/Carnuel Cemetery. Tijeras 3. Bernalillo Co.
 Sedillo Cemetery. Sedillo 1. Bernalillo Co.
 Spanish Methodist/Peralta/Honey Field Farm Cemetery. Los Lunas 1. Valencia Co.
 St. John Nepomucene Church, LA 847. Chilili 2. Bernalillo Co.
 Sunset Memorial Park Cemetery. Albuquerque West 2. Bernalillo Co.
 Terrace Grove Cemetery. Belen 2. Valencia Co.
 Tijeras Cemetery. Tijeras 2. Bernalillo Co.
 Tomé Catholic Cemetery. Tome 1. Valencia Co.
 Tomé Cemetery. Tome 3. Valencia Co.
 U.S. Indian School Cemetery. Albuquerque West 1. Bernalillo Co.
 Unknown cemetery E of St. Joseph's Hospital, LA 49791. Albuquerque West 15. Bernalillo Co.
 Unknown cemetery, Tomé. Tome 2. Valencia Co.
 Unknown cemetery at San José Parish (school & church). Albuquerque West 10. Bernalillo Co.
 Unknown cemetery on Ernie Pyle Middle School grounds. Albuquerque West 16. Bernalillo Co.
 Unknown cemetery west of Los Chavez. Belen 1. Valencia Co.
 Unknown cemetery, Hell's Canyon Wash. Hubbell Spring 1. Valencia Co.

Unknown cemetery N of Alameda, S of Golden Meadow, E of Guadalupe Trail, and W of 4th Street and the Chamisal Lateral. Alameda 7. Bernalillo Co.
Unknown cemetery at TVI, LA 47860. Albuquerque East 2. Bernalillo Co.
Unknown possible shrine/cemetery at Rio Grande and Chamisal. Los Griegos 4. Bernalillo Co.
Unnamed proposed cemetery, Paradise Hills. Los Griegos 5. Bernalillo Co.
Vista Verde Memorial Park. Loma Machete 1. Sandoval Co.

REFERENCES CITED

Brugge, David M.

- 1983 Navajo Prehistory and History to 1850. In Handbook of North American Indians, 10: Southwest, Alfonso Ortiz, ed., pp. 489-501. Washington: Smithsonian Institution.

Cordell, Linda S.

- 1979 A Cultural Resources Overview of the Middle Rio Grande Valley, New Mexico. Albuquerque and Santa Fe: USDA Forest Service and Bureau of Land Management.

Dewitt, Susan

- 1979 San Ignacio Church [National Register of Historic Places Inventory, Nomination Form]. On file at Historic Preservation Division, Santa Fe and City of Albuquerque Planning Department.

Jaskolski, Ernie

- 1997 New Mexico Cemeteries: A Genealogical Guide. New Mexico Genealogical Society, P.O. Box 8283, Albuquerque, NM 87198-8283.

Lycett, Mark T.

- 1995 Archaeological Implications of European Contact: Demography, Settlement, and Land Use in the Middle Rio Grande Valley, New Mexico. Unpublished Ph.D. dissertation, Department of Anthropology, University of New Mexico.

Renfrew, Colin, and Paul Bahn

- 1991 Archaeology: Theories, Methods and Practice. New York: Thames and Hudson Inc.

Simmons, Marc

- 1982 Albuquerque: A Narrative History. Albuquerque: University of New Mexico Press.

Steele, Thomas J., S.J.

- 1983 Works and Days: A History of San Felipe Neri Church, 1867-1895.
Albuquerque: The Albuquerque Museum.

Vierra, Bradley J.

- 1992 A Sixteenth-century Spanish Campsite in the Tiguex Province: An Archaeologist's Perspective. In Current Research on the Late Prehistory and Early History of New Mexico, Bradley J. Vierra, ed., pp. 165-174. Albuquerque: New Mexico Archaeological Council.

MAPS CITED

New Mexico State Highway and Transportation Department

- 1980 Manzano Mountains Quad, #54 [ca. 1980]. Santa Fe: New Mexico State Highway and Transportation Department.

U. S. General Land Office

- 1894 Plat of Small Holding Claims in Secs. 29, 32, and 33, T10N R3E (mapping date 1894, accepted 1895). On file at Bureau of Land Management, Santa Fe.
- 1895 Plat of Secs. 35 and 36 of T11N R5E.... Showing Small Holding Claims (duplicate, filed 1895). On file at Bureau of Land Management, Santa Fe.
- 1901 Amended Plat of T10N R5E.... Surveyed Between 1880 and 1901. On file at Bureau of Land Management, Santa Fe.
- 1908 Small Holding Claims in Sec. 11, T10N R5E, Surveyed in 1908. On file at Bureau of Land Management, Santa Fe.

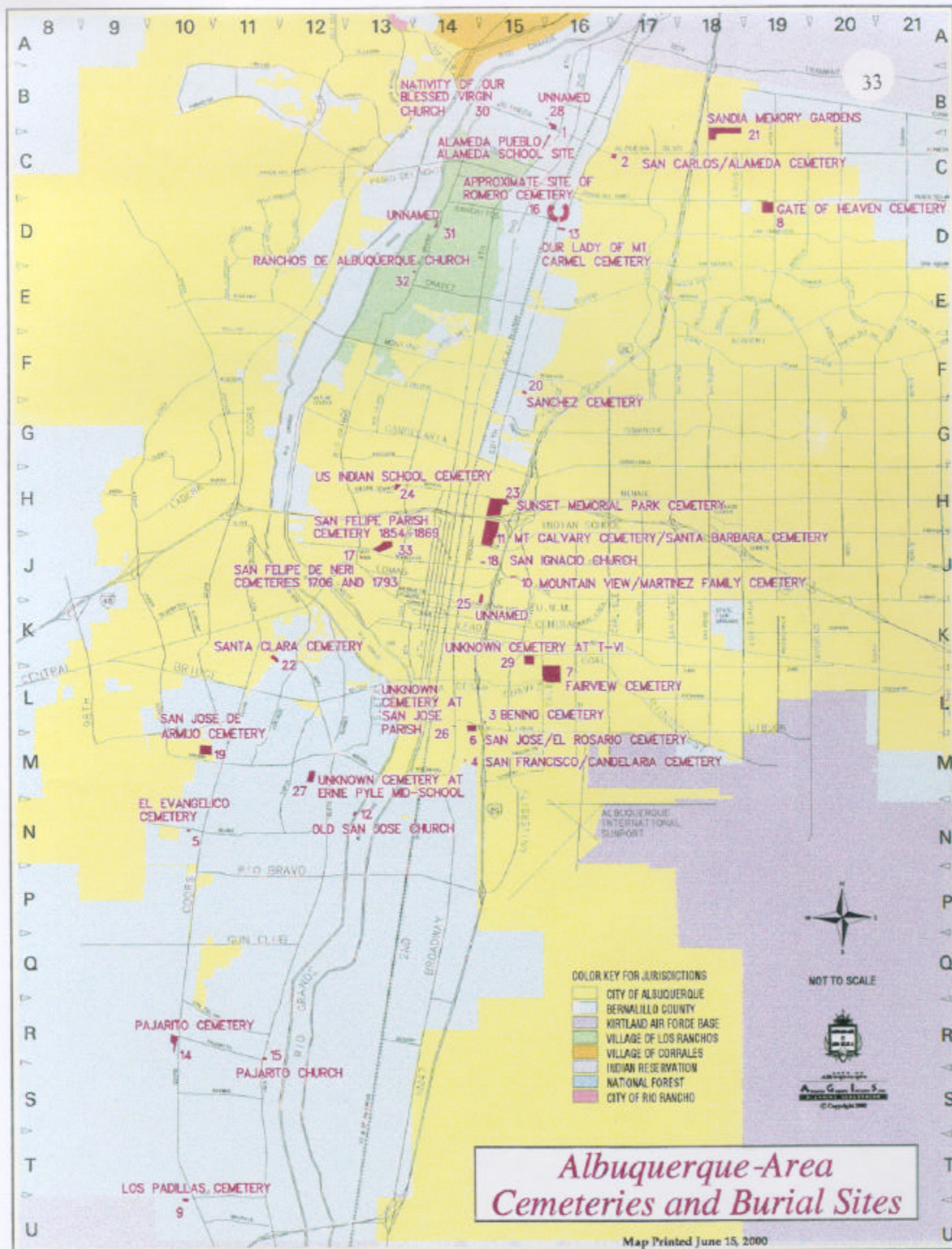


Fig. 1. Albuquerque Area Cemeteries and Burial Sites. Prepared by Patricia Martinez-Apt, Albuquerque Geographic Information Systems, City of Albuquerque Planning Department, 1999.

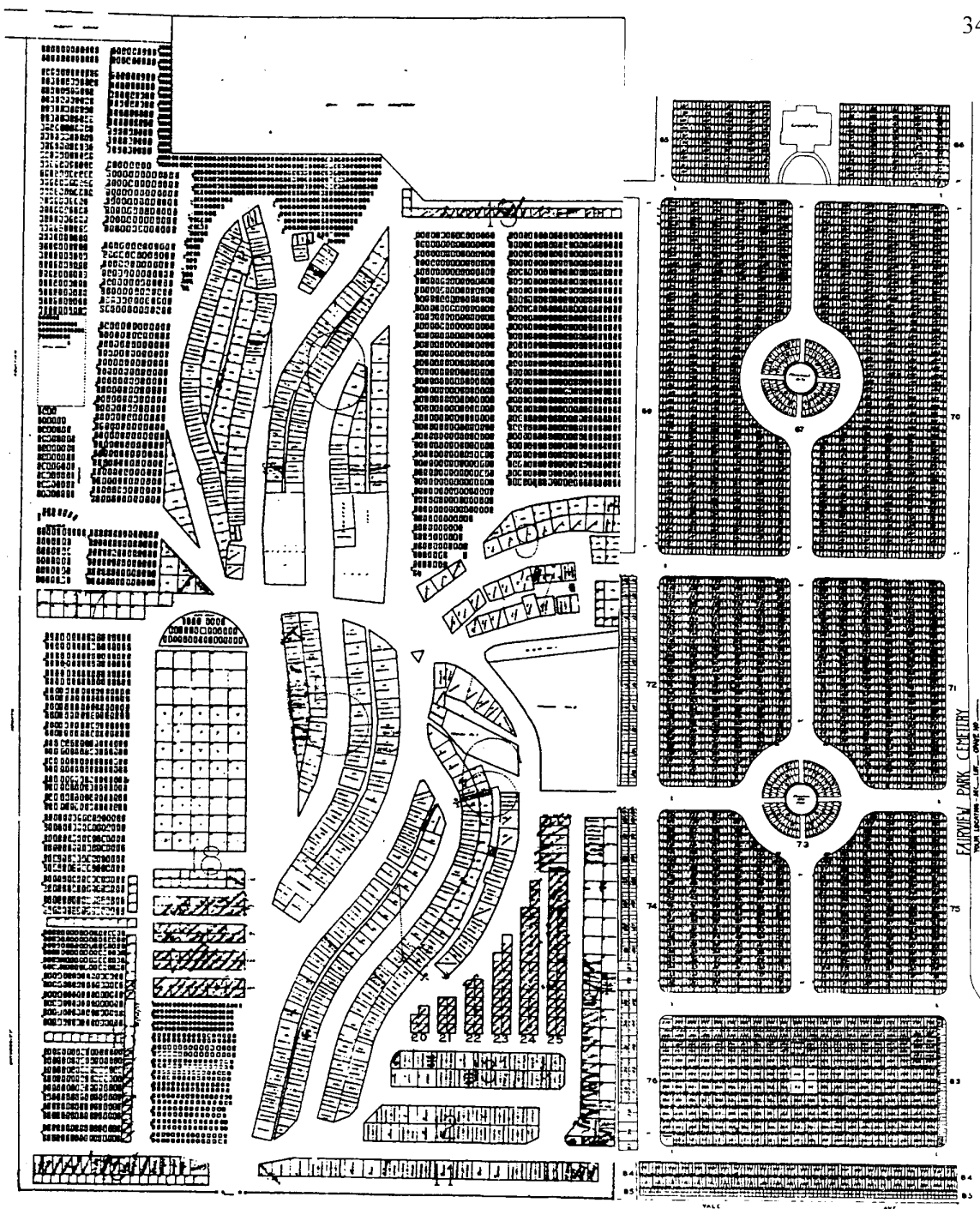


Fig. 2. Maps of historic portions of Fairview Cemetery, dates unknown. North is to the left. The older part of the cemetery is in the left block. Note the curvilinear plot design in portions of this section. (Map courtesy Bob Leonard, Department of Anthropology, University of New Mexico.)



Fig. 3. Camposanto de San Ysidro, west of San Ysidro Church, Corrales, 2/24/99.

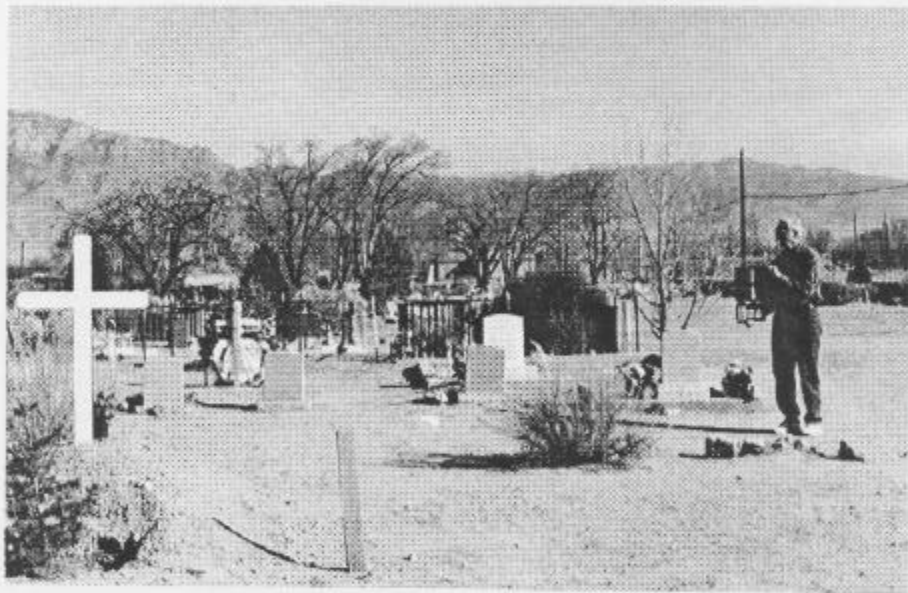


Fig. 4. Camposanto de San Ysidro, west of San Ysidro Church, Corrales, 2/24/99.



Fig. 5. Camposanto de San Ysidro, west of San Ysidro Church, Corrales, 2/24/99.

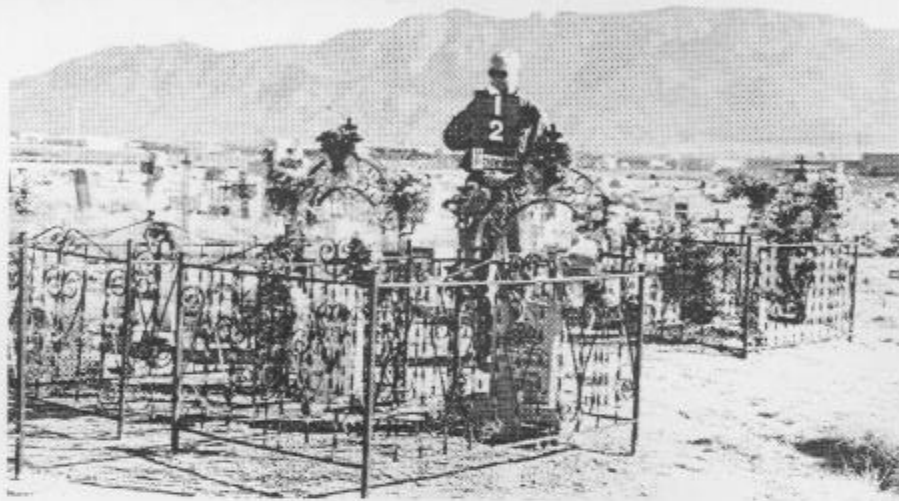


Fig. 6. San Carlos/Alameda Cemetery, Alameda Blvd east of Edith Blvd, west of Washington Street, Albuquerque, 12/30/98.

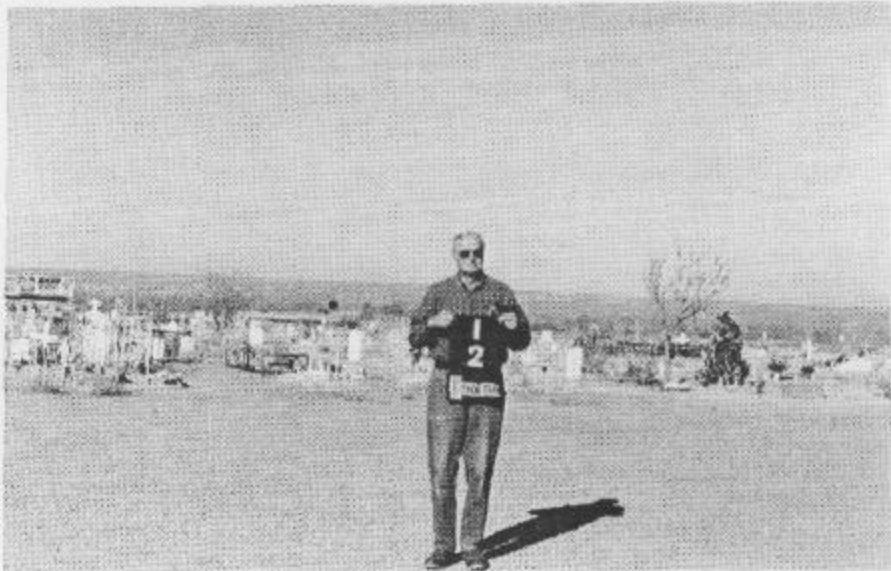


Fig. 7. San Carlos/Alameda Cemetery, Alameda Blvd east of Edith Blvd, west of Washington Street, Albuquerque, 12/30/98.



Fig. 8. San Carlos/Alameda Cemetery, Alameda Blvd east of Edith Blvd, west of Washington Street, Albuquerque, 12/30/98.



Fig. 9. Gate of Heaven Cemetery, 7500 Paseo del Norte NE, Albuquerque, 12/29/98.

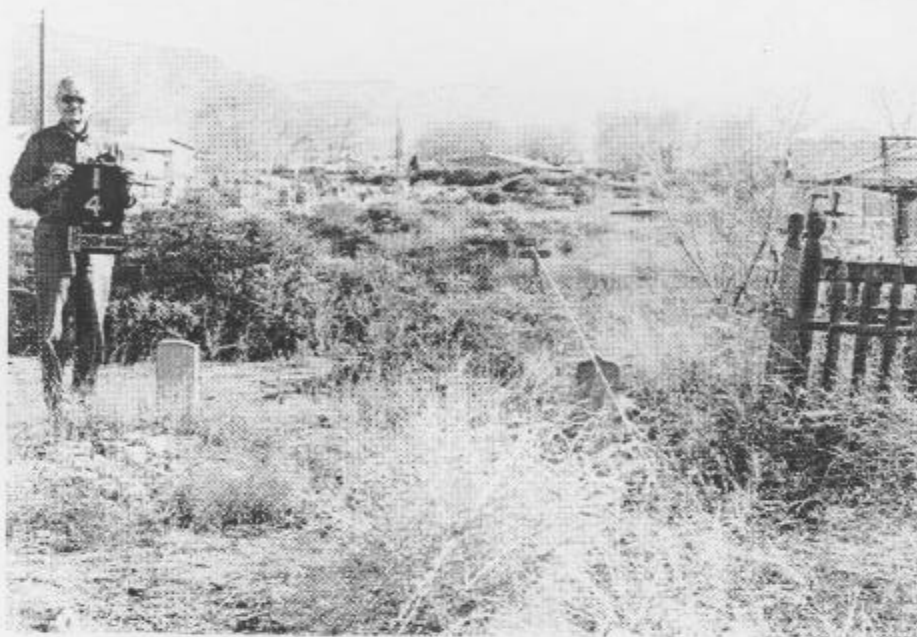


Fig. 10. Our Lady of Mt. Carmel Cemetery, between 7804 and 7810 Edith Blvd NE, Albuquerque, 12/30/98.

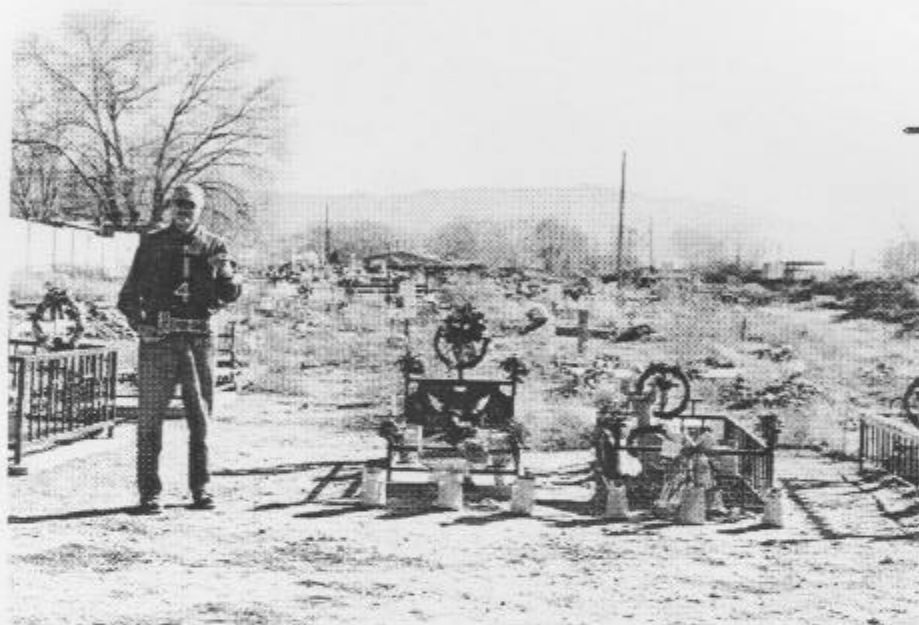


Fig. 11. Our Lady of Mt. Carmel Cemetery, between 7804 and 7810 Edith Blvd NE, Albuquerque, 12/30/98.

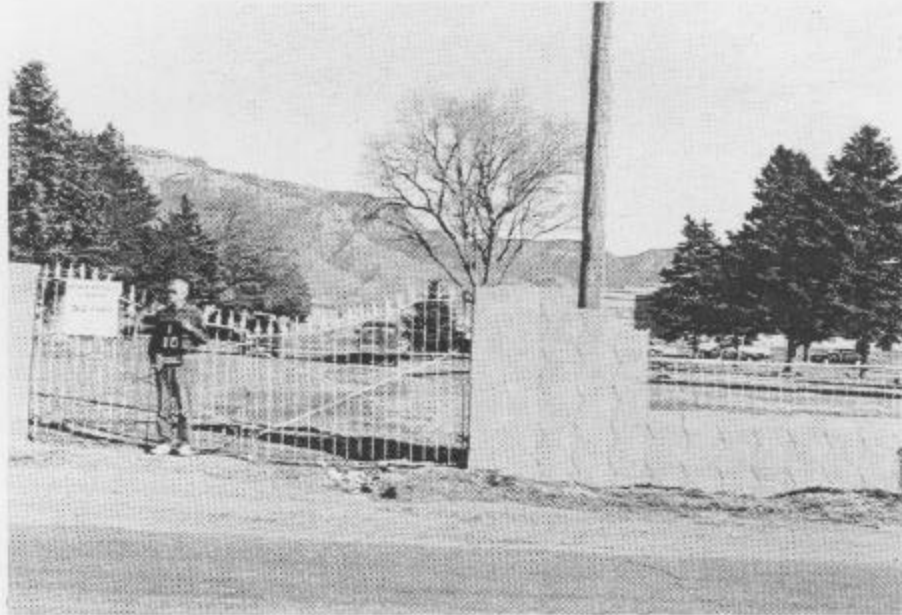


Fig. 12. Sandia Memory Gardens, 9500 San Pedro Blvd NE, Albuquerque, 12/29/98.



Fig. 13. Sandia Memory Gardens, 9500 San Pedro Blvd NE, Albuquerque, 12/29/98.

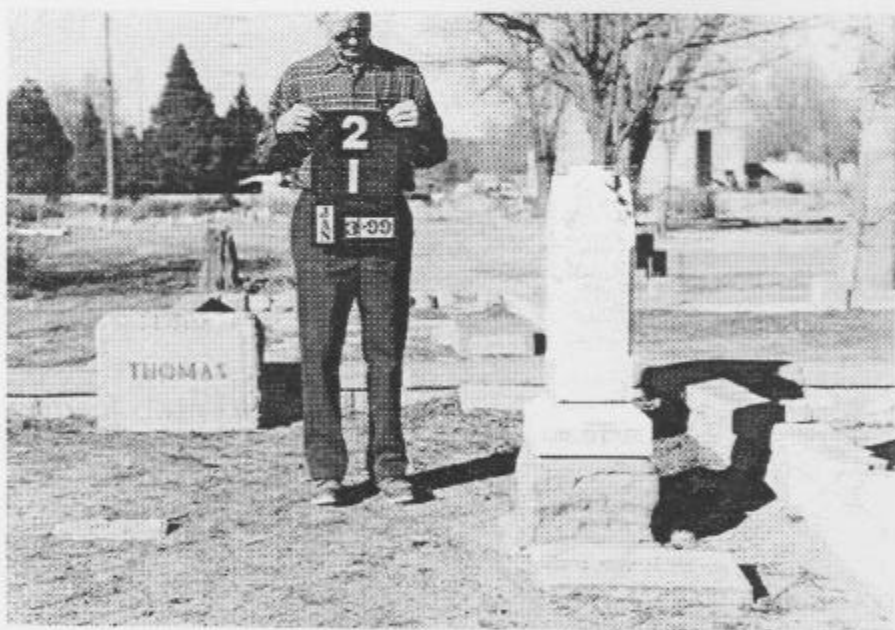


Fig. 14. Fairview Cemetery, 700 Yale Blvd SE, Albuquerque, 1/3/99. Upper, modern section; lower, old section.



Fig. 15. Fairview Cemetery (old section), 700 Yale Blvd SE, Albuquerque, 1/3/99.



Fig. 16. Fairview Cemetery (Congregation Albert Cemetery section), 700 Yale Blvd SE, Albuquerque, 1/3/99.



Fig. 17. Fairview Cemetery (Congregation Albert Cemetery section), 700 Yale Blvd SE, Albuquerque, 1/3/99.

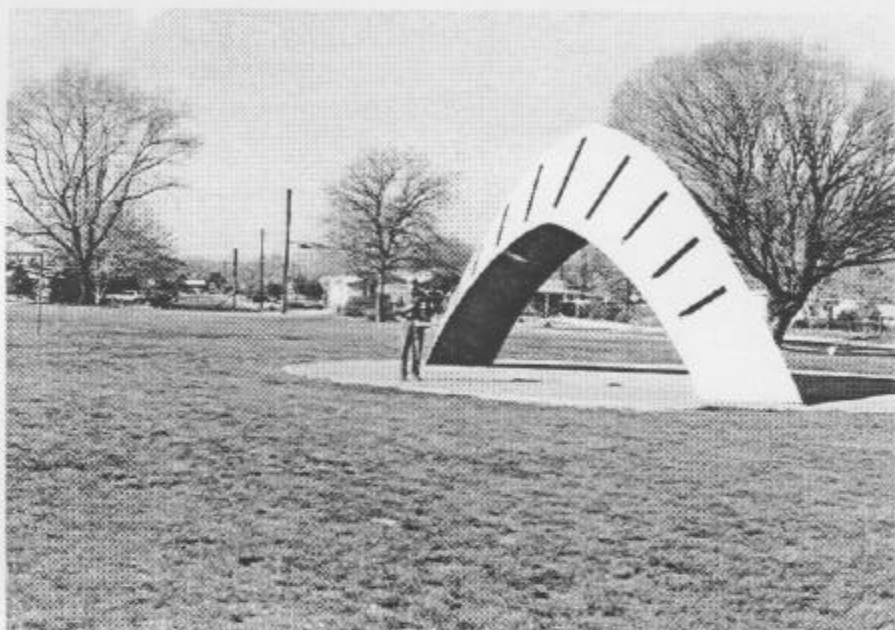


Fig. 18. U.S. Indian School Cemetery, 1401 Menaul Blvd Extension NW, Albuquerque, 12/30/98.

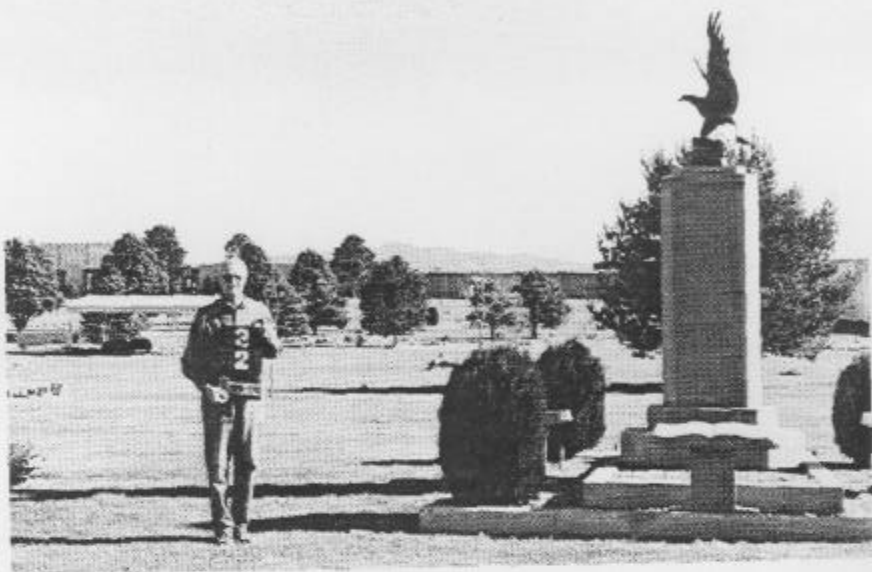


Fig. 19. Sunset Memorial Park, 924-C Menaul Blvd NE, Albuquerque, 12/30/98.



Fig. 20. Sunset Memorial Park, 924-C Menaul Blvd NE, Albuquerque, 12/30/98.

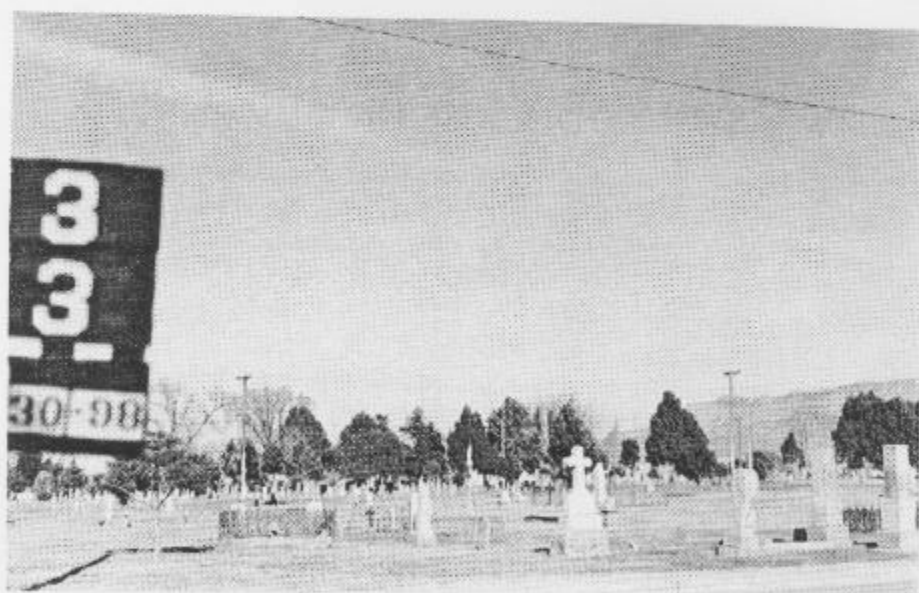


Fig. 21. Mt. Calvary/Santa Barbara Cemetery, 1900 Edith Blvd NE, Albuquerque, 12/30/98.



Fig. 22. Mt. Calvary/Santa Barbara Cemetery, 1900 Edith Blvd NE, Albuquerque, 12/30/98.

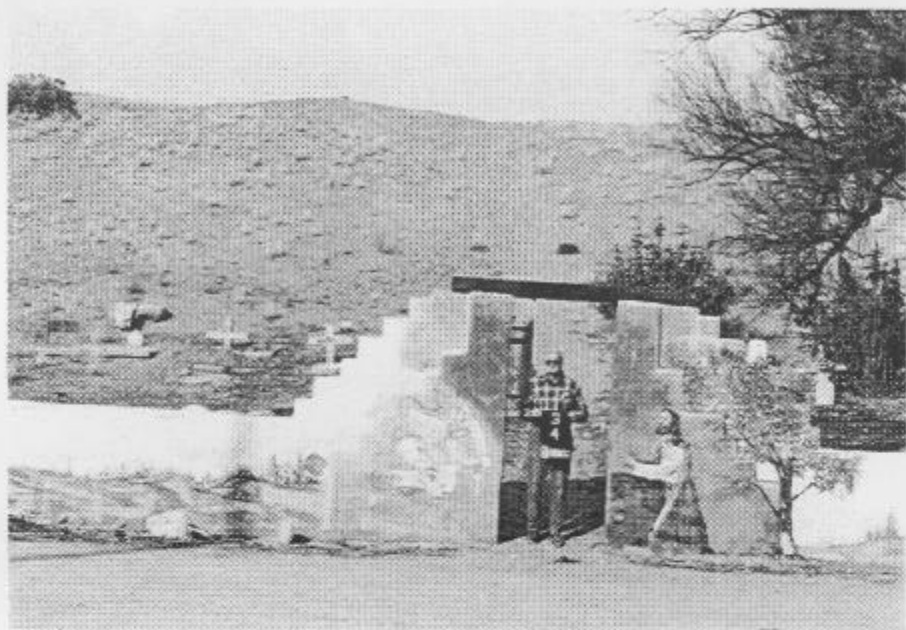


Fig. 23. Santa Clara Cemetery, approx. 2430 Foothill Road SW, Albuquerque, 12/31/98.



Fig. 24. Santa Clara Cemetery, approx. 2430 Foothill Road SW, Albuquerque, 12/31/98.

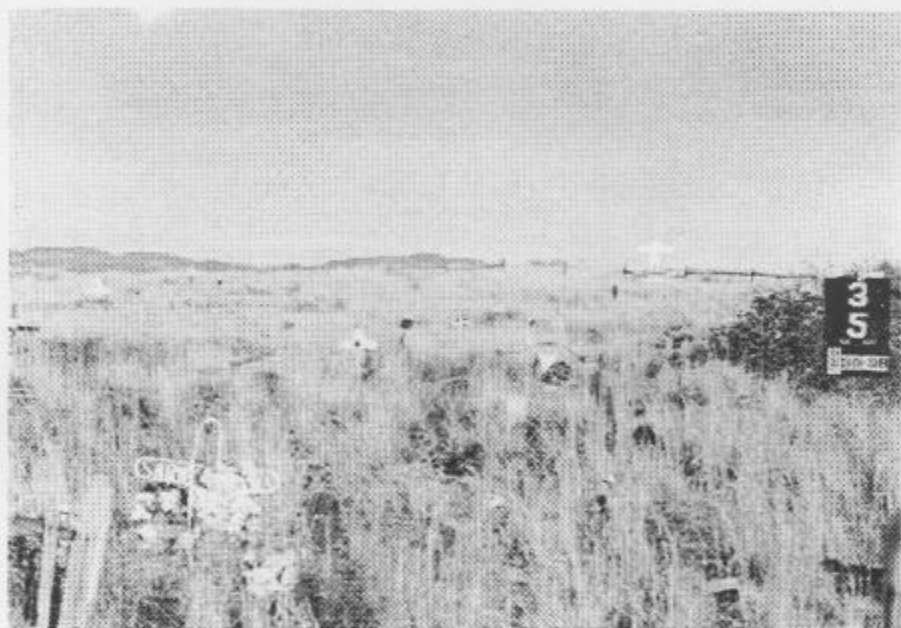


Fig. 25. Benino Cemetery, NE quadrant of Interstate 25 and Gibson Blvd, Albuquerque, 12/30/98.



Fig. 26. Benino Cemetery, NE quadrant of Interstate 25 and Gibson Blvd, Albuquerque, 12/30/98.

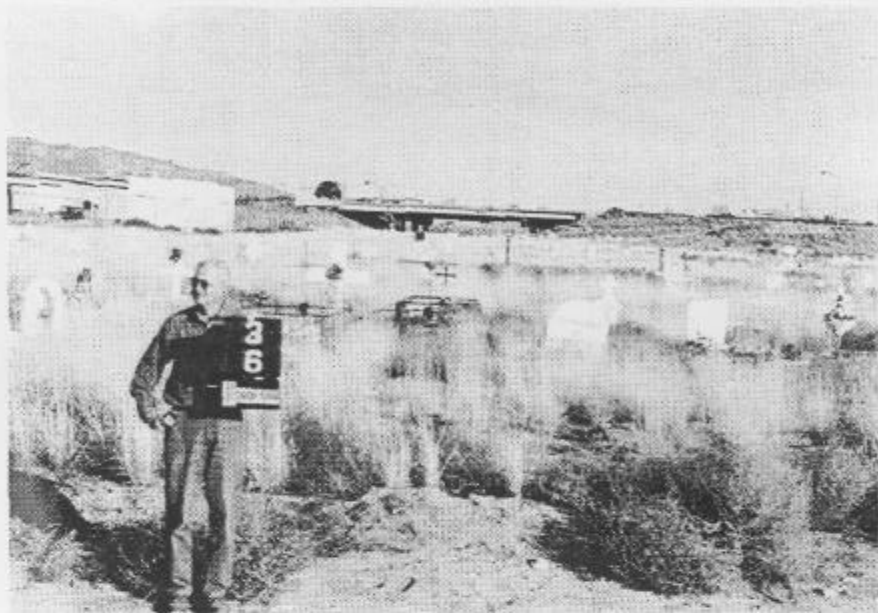


Fig. 27. San José/El Rosario Cemetery, 2300 Edith Blvd SE (SW quadrant of Interstate 25 and Gibson Blvd), Albuquerque, 12/30/98.



Fig. 28. San José/El Rosario Cemetery, 2300 Edith Blvd SE (SW quadrant of Interstate 25 and Gibson Blvd), Albuquerque, 12/30/98.

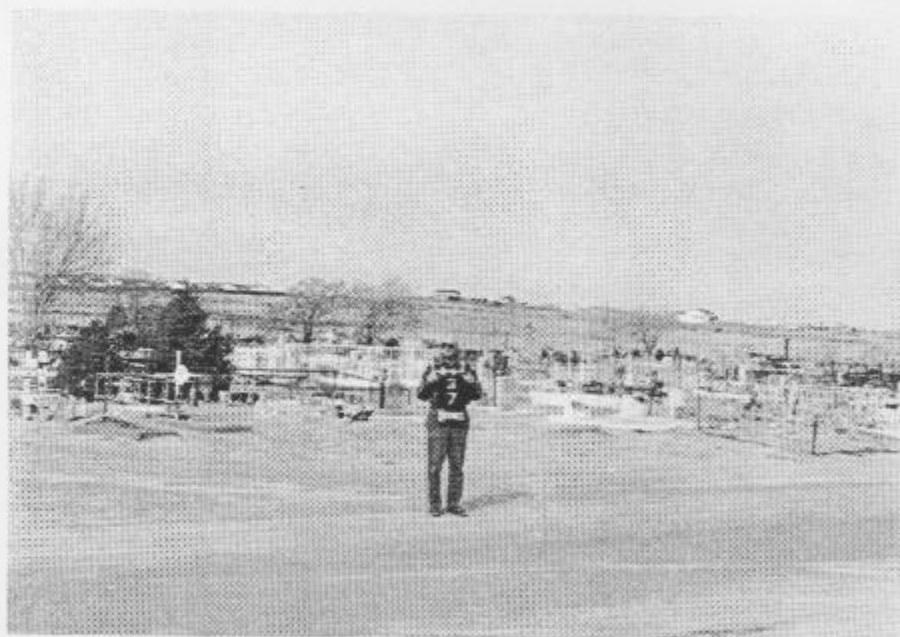


Fig. 29. San José de Armijo Cemetery, NW quadrant of Coors Blvd and Arenal Road, Albuquerque, 12/31/98.



Fig. 30. San José de Armijo Cemetery, NW quadrant of Coors Blvd and Arenal Road, Albuquerque, 12/31/98.

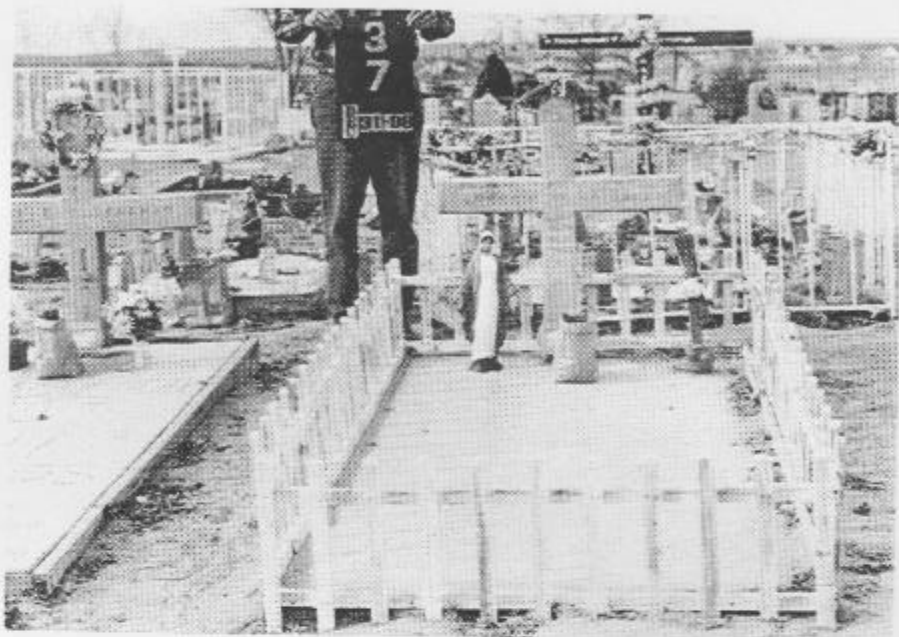


Fig. 31. San José de Armijo Cemetery, NW quadrant of Coors Blvd and Arenal Road, Albuquerque, 12/31/98.



Fig. 32. El Evangelico Cemetery, between 3804 and 3900 Blake Road SW, approx. .5 mi W of Coors Blvd, Albuquerque, 12/31/98.



Fig. 33. El Evangelico Cemetery, between 3804 and 3900 Blake Road SW, approx. .5 mi W of Coors Blvd, Albuquerque, 12/31/98.

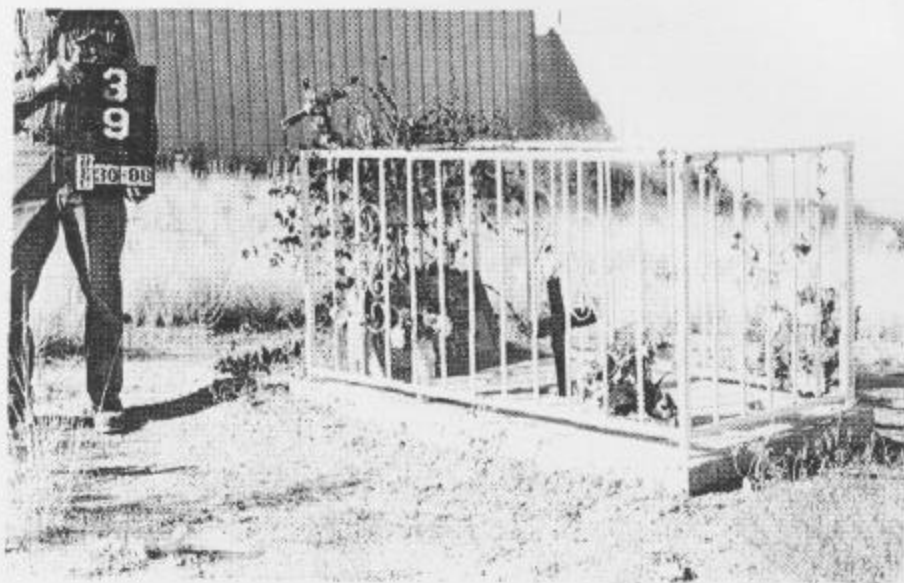


Fig. 34. Mtn. View/Martinez Family Cemetery, approx. 1100 Legion Road NE, Albuquerque, 12/30/98.



Fig. 35. Mtn. View/Martinez Family Cemetery, approx. 1100 Legion Road NE, Albuquerque, 12/30/98.



Fig. 36. San Francisco/Candelaria Cemetery, south of 610 Lace Road SE, Albuquerque, 12/31/98.



Fig. 37. San Francisco/Candelaria Cemetery, south of 610 Lace Road SE, Albuquerque, 12/31/98.



Fig. 38. San Francisco/Candelaria Cemetery, south of 610 Lacey Road SE, Albuquerque, 12/31/98.



Fig. 39. San Felipe de Neri Church, 2005 N. Plaza NW, Albuquerque, 12/30/98.

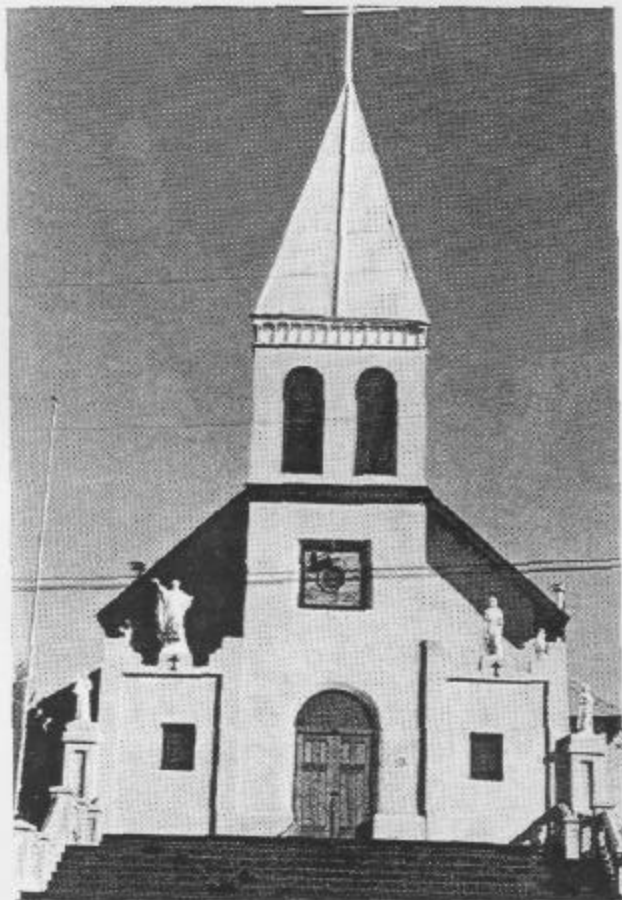


Fig. 40. San Ignacio Church, 1300 Walter Street NE, Albuquerque, 1/3/99.



Fig. 41. San Antonito Church and Cemetery, San Antonito, 2/21/99.

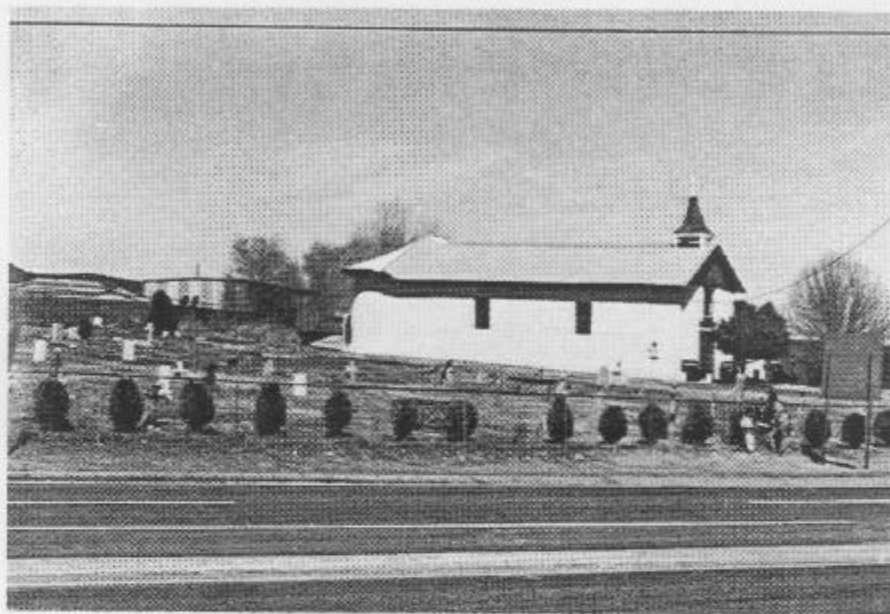


Fig. 42. San Antonito Church and Cemetery, San Antonito, 2/21/99.

APPENDIX A

STATE OF NEW MEXICO LEGISLATION GOVERNING CEMETERIES & BURIALS

18-6-11.2 of the Cultural Properties Act NMSA 1978
Permit required for excavation of unmarked burials; penalty

30-12-12 NMSA 1978
Disturbing a marked burial ground

30-12-13 NMSA 1978
Defacing tombs

CULTURAL PROPERTIES ACT

(NMSA 1978)

11

~~18-6-11.1. Confidentiality of site location.~~

~~A. Any information in the custody of a public official concerning the location of archaeological resources, the preservation of which is in the interest of the state of New Mexico, shall remain confidential, unless the custodian of such information determines that the dissemination of such information will further the purposes of the Cultural Properties Act [18-6-1 to 18-6-17 NMSA 1978], as set forth in Section 18-6-2 NMSA 1978 and will not create a risk of loss of archaeological resources.~~

~~B. As used in Subsection A of this section, "archaeological resources" means a location where there exists material evidence of the past life and culture of human beings in this state and includes the sites of burial and habitats of human beings.~~

History: 1978 Comp., § 18-6-11.1, enacted by Laws 1979, ch. 66, § 1.

18-6-11.2. Permit required for excavation of unmarked burials; penalty.

A. Each human burial in the state interred in any unmarked burial ground is accorded the protection of law and shall receive appropriate and respectful treatment and disposition.

B. A person who knowingly, willfully and intentionally excavates, removes, disturbs or destroys any human burial buried, entombed or sepulchered in any unmarked burial ground in the state, or any person who knowingly, willfully and intentionally procures or employs any other person to excavate, remove, disturb or destroy any human burial buried, entombed or sepulchered in any unmarked burial ground in the state, except by authority of a permit issued by the state medical investigator or by the committee with the concurrence of the state archaeologist and state historic preservation officer, is guilty of a fourth degree felony and shall be punished by a fine not to exceed five thousand dollars (\$5,000) or by imprisonment for a definite term of eighteen months, or both. The offender shall upon conviction forfeit to the state all objects, artifacts and human burials excavated or removed from an unmarked burial ground in violation of this section, and any proceeds from the sale by the offender of any of the foregoing shall also be forfeited. As used in this section:

(1) "unmarked burial ground" means a location where there exists a burial or burials of any human being which is not visibly marked on the surface of the ground in any manner traditionally or customarily used for marking burials and includes any funerary object, material object or artifact associated with the burial or burials; and

(2) "human burial" means a human body or human skeletal remains and includes any funerary object, material object or artifact buried, entombed or sepulchered with that human body or skeletal remains.

C. Any person who discovers a human burial in any unmarked burial ground shall cease any activity that may disturb that burial or any object or artifact associated with that burial and shall notify the local law enforcement agency having jurisdiction in the area. The local law enforcement agency shall notify the state medical investigator and the state historic preservation officer.

D. The state medical investigator may, consistent with the statutes governing medical investigations, have authority over or take possession of any human burial discovered in the state, in which case the provisions of Subsections E and F of this section shall not apply.

E. Permits for excavation of a human burial discovered in an unmarked burial ground shall be issued by the committee within sixty days of receipt of application when the applicant:

(1) submits written authorization for that excavation from the owner of the land on which the human burial is located or the applicant is the owner of the land;

(2) demonstrates appropriate efforts to determine the age of the human burial and to identify and consult with any living person who may be related to the human burial interred in the unmarked burial ground;

(3) complies with permit procedures and requirements established by regulations authorized in this section to ensure the complete removal of the human burial and the collection of all pertinent scientific information in accordance with proper archaeological methods; and

(4) provides for the lawful disposition or reinterment of the human burial either in the original or another appropriate location and of any objects or artifacts associated with that human burial consistent with regulations issued by the state historic preservation officer, except that the committee shall not require, as a condition of issuance of a permit, reinterment or disposition, any action that unduly interferes with the owner's use of the land.

F. Permits for the excavation of any human burial discovered in the course of construction or other land modification may be issued by the committee with the concurrence of the state archaeologist and the state historic preservation officer on an annual basis to professional archaeological consultants or organizations.

G. Except when the committee requires as a condition of the permit that any object or artifact associated with a human burial be reinterred or disposed of with that burial, that object or artifact shall be the property of the person owning the land on which that burial is located.

H. Any object or artifact and any human burial excavated or removed from an unmarked burial ground in violation of this section shall be forfeited to the state and shall be lawfully disposed of or reinterred in accordance with regulations issued by the state historic preservation officer; provided that no object or artifact so forfeited shall ever be sold by the state; and provided further that any object or artifact removed from the land without the owner's consent and in violation of this section shall be returned to the lawful owner consistent with Subsection G of this section.

I. The state historic preservation officer shall issue regulations with the concurrence of the state medical investigator for the implementation of this section.

History: Laws 1969, ch. 267, § 1.

~~18-6-12. Emergency classification pending investigation.~~

~~A cultural property which the committee thinks may be worthy of preservation may be included on the official register on a temporary basis for not more than one year, during which time the committee shall investigate the property and make a determination as to whether it may be permanently placed on the official register. If the cultural property is on private land, the temporary classification shall not be considered a taking of private property, but the owner may receive a fair rental value for the part of the land affected if the temporary classification unduly interferes with the owner's normal use of the land. The owner shall be immediately notified of the committee's determination. If at the expiration of one year from the time the temporary classification was imposed the owner has not been notified of any committee action, the temporary classification shall lapse, and it shall not be renewed for five years.~~

History: 1953 Comp., § 4-27-13, enacted by Laws 1969, ch. 223, § 10.

30-12-11. Right of privacy; damages.

A. Any person whose wire or oral communication is intercepted, disclosed or used in violation of this act [30-12-1 to 30-12-11 NMSA 1978] shall:

(1) have a civil cause of action against any person who intercepts, discloses or uses, or procures any other person to intercept, disclose or use such communications; and

(2) be entitled to recover from any such person actual damages, but not less than liquidated damages computed at the rate of one hundred dollars (\$100) for each day of violation or one thousand dollars (\$1,000), whichever is higher; punitive damages; and a reasonable attorney's fee and other litigation costs reasonably incurred.

B. A good faith reliance on a court order or on the provisions of this act shall constitute a complete defense to any civil or criminal action.

C. Any communications common carrier which in good faith acts in reliance upon a court order or in compliance with any of the provisions of this act shall not be liable for any civil or criminal action.

History: 1953 Comp., § 40A-12-1.10, enacted by Laws 1973, ch. 369, § 11.

Severability clauses. — Laws 1973, ch. 369, § 12, provides for the severability of the act if any part or application thereof is held invalid.

"Any person who intercepts" construed. — The meaning of "any person who intercepts" includes persons who have participated in the steps necessary to effectuate an unauthorized interception of communications which results in the violation of an individual's privacy. *Templin v. Mountain Bell Tel. Co.*, 97 N.M. 699, 643 P.2d 263 (Ct. App. 1982).

Civil action permitted whether or not conviction achieved. — The civil cause of action provided for in this section may be pursued regardless of whether the defendant has been convicted under 30-12-1 NMSA 1978. *Templin v. Mountain Bell Tel. Co.*, 97 N.M. 699, 643 P.2d 263 (Ct. App. 1982).

Corporations as well as individuals may be liable in damages if they participate in setting up unauthorized interceptions of a customer's telephone communications. *Templin v. Mountain Bell Tel. Co.*, 97 N.M. 699, 643 P.2d 263 (Ct. App. 1982).

Duty of telephone company. — A telephone company has a duty to obtain the valid consent of a customer before placing an extension of the customer's phone in another person's residence. *Templin v. Mountain Bell Tel. Co.*, 97 N.M. 699, 643 P.2d 263 (Ct. App. 1982).

Am. Jur. 2d, A.L.R. and C.J.S. references. — 62A Am. Jur. 2d Privacy §§ 54, 254.

Limitation of actions: invasion of right of privacy, 33 A.L.R.4th 479.

Construction and application of state statutes authorizing civil cause of action by person whose wire or oral communication is intercepted, disclosed, or used in violation of statutes, 33 A.L.R.4th 506.

Eavesdropping on extension telephone as invasion of privacy, 49 A.L.R.4th 430.

Plaintiff's rights to punitive or multiple damages when cause of action renders both available, 2 A.L.R.5th 449.

Application to extension telephones of Title III of the Omnibus Crime Control and Safe Streets Act of 1968 (18 USCS §§ 2510 et seq.), pertaining to interception of wire communications, 58 A.L.R. Fed. 694.

30-12-12. Disturbing a marked burial ground.

Disturbing a marked burial ground consists of knowingly and willfully disturbing or removing the remains, or any part of them, or any funerary object, material object or associated artifact of any person interred in any church, churchyard, cemetery or marked burial ground or knowingly and willfully procuring or employing any other person to disturb or remove the remains, or any part of them, or any funerary object, material object or artifact associated with any person interred in any church, churchyard, cemetery or marked burial ground, other than pursuant to an order of the district court, the provisions of Section 24-14-23 NMSA 1978 or as otherwise specifically permitted by law. As used in this section "marked burial ground" means any interment visibly marked according to traditional or customary practice.

Whoever commits disturbing a marked burial ground is guilty of a fourth degree felony and shall be punished by a fine not to exceed five thousand dollars (\$5,000) or by imprisonment for a definite term of eighteen months or both.

History: 1953 Comp., § 40A-12-2, enacted by Laws 1963, ch. 303, § 12-2; 1989, ch. 267, § 3.

Cross references. — For permit for disinterment and reinterment, see 24-14-23 NMSA 1978.

The 1989 amendment, effective June 16, 1989, substituted "a marked burial ground" for "the remains of a dead person" in the catchline; in the first paragraph, substituted the present first sentence for

"Disturbing the remains of a dead person consists of knowingly disturbing or removing the remains, or any part thereof, of any person permanently interred in any church, churchyard or cemetery, other than pursuant to an order of the district court", and added the second sentence; and substituted the present language of the second paragraph for "Whoever commits disturbing the remains of a dead person is

guilty of a misdemeanor."

This section is in pari materia with § 58-17-3 and should be construed with reference to the definition of "cemetery" supplied by § 58-17-3. 1987 Op. Att'y Gen. No. 87-31.

Property held not to be cemetery. — Private property discovered to contain human remains presumed to be soldiers killed in the battle of Glorieta on March 28, 1862, is not a cemetery within the meaning of this section so as to require the museum division of the office of cultural affairs to petition the district court prior to excavating the site and disinterment of the remains pursuant to the Cultural Properties Act, §§ 18-6-1 through 18-6-7. 1987 Op. Att'y Gen. No. 87-31.

Necessary party to disinterment actions. — Since when a district court orders disinterment a legal interest of the health department (now the department of health) will of necessity be directly affected, the department is a necessary or indispensable party in disinterment actions brought in the district courts of this state. 1966 Op. Att'y Gen. No. 66-116.

Am. Jur. 2d, A.L.R. and C.J.S. references. — 22A Am. Jur. 2d Dead Bodies § 107.

Dead bodies: liability for improper manner of reinterment, 53 A.L.R.4th 394.

Liability for desecration of graves and tombstones, 77 A.L.R.4th 108.

26A C.J.S. Dead Bodies § 10.

30-12-13. Defacing tombs.

Defacing tombs consists of either:

A. intentionally defacing, breaking, destroying or removing any tomb, monument or gravestone erected to any deceased person or any memento, memorial or marker upon any place of burial of any human being or any ornamental plant, tree or shrub appertaining to the place of burial of any human being; or

B. intentionally marking, defacing, injuring, destroying or removing any fence, post, rail or wall of any cemetery or graveyard or erected within any cemetery or graveyard or any marker, memorial or funerary object upon any place of burial of any human being.

Whoever commits defacing a tomb is guilty of a misdemeanor and shall be punished by a fine of not more than one thousand dollars (\$1,000) or by imprisonment for a definite term less than one year or both.

History: 1953 Comp., § 40A-12-3, enacted by Laws 1963, ch. 303, § 12-3; 1989, ch. 267, § 4.

The 1989 amendment, effective June 16, 1989, substituted "memorial or marker upon any place of burial of any human being" for "any memorial" in Subsection A, added all of the language of Subsection B beginning with "or any marker", and substituted all of the language of the undesignated last para-

graph beginning with "misdemeanor" for "petty misdemeanor".

Am. Jur. 2d, A.L.R. and C.J.S. references. — 14 Am. Jur. 2d Cemeteries § 44.

Liability for desecration of graves and tombstones, 77 A.L.R.4th 108.

14 C.J.S. Cemeteries §§ 34, 35.

30-12-14. Unlawful burial.

Unlawful burial consists of the using of any land or lands as a burial place of interment within fifty yards from either side of the bank or border of any stream, river or any body of water, by a person or persons, society of persons, order, corporation or corporations.

Whoever commits unlawful burial is guilty of a misdemeanor.

History: 1953 Comp., § 40A-12-4, enacted by Laws 1963, ch. 303, § 12-4.

Cross references. — For burial of unclaimed dead, see 24-12-1 to 24-12-3 NMSA 1978.

Am. Jur. 2d, A.L.R. and C.J.S. references. — 22A Am. Jur. 2d Dead Bodies § 46.

Liability of cemetery in connection with conducting or supervising burial services, 42 A.L.R.4th 1059.

26A C.J.S. Dead Bodies § 10.

ARTICLE 13

Violation of Civil Rights

Sec.
30-13-1. Disturbing lawful assembly.
30-13-2. Denial of service by a utility.
30-13-3. Blacklisting.

Sec.
30-13-4. Unlawful payment of wages in script.
30-13-5. Unlawful coercion of employees.