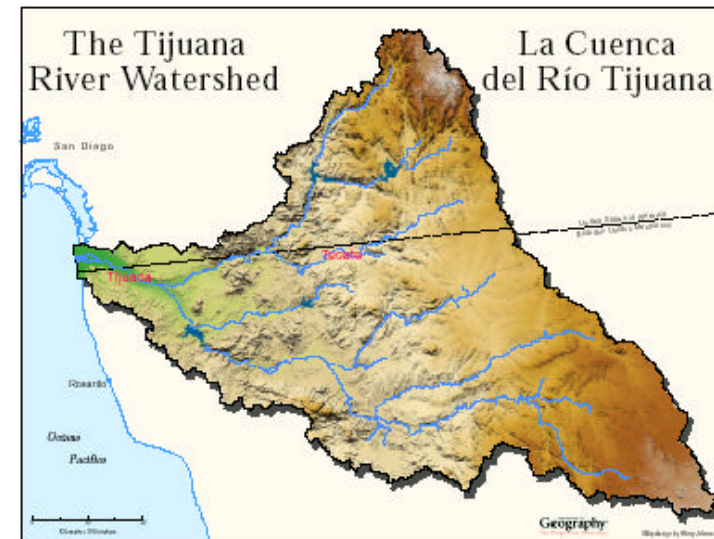


# SCERP Border Institute VIII

## Means and Mechanisms for Collaborative Planning and Operation of Transboundary and Shared Watersheds

Presentation for USIBWC Citizens' Forum  
Imperial Beach, California  
November 14, 2006



**CONSORCIO DE INVESTIGACION Y POLITICA AMBIENTAL DEL SUROESTE**

**SOUTHWEST CONSORTIUM FOR ENVIRONMENTAL RESEARCH & POLICY**



# Border Institute VIII

- Importance of healthy watersheds
  - Ecosystem Services (providing food, regulating floods, supporting nutrient cycling, hosting habitats, etc.)
  - Hydrological Resources (drinking water, power generation, etc.)
  - Ecological Processes

# Transborder Watersheds

- Many and varied
- Proper management requires transborder cooperation
  - Flood and sediment control
  - Drought management
  - Surface and groundwater management
  - Cross-border water infrastructure

# Value of Transboundary Watershed Coordination

- Water quantity and quality enhancement
- Flood, scour, erosion, and sedimentation control
- Drought mitigation
- Infrastructure (cross-boundary water piping and treatment, burden sharing or burden reduction)
- Groundwater recharge and protection from contamination and salination

# Cross-Border *Communication* during Infrastructure Planning

- Regional watershed planning across existing jurisdictional boundaries affected by proposed infrastructure
- Improve communication between regions and across boundaries via meetings of multiple agencies and organizations on both sides of the border
- Transboundary Environmental Impact Assessments are needed to alert each side to projects on the other side

# Central Recommendation

- Collaborative management of transborder watersheds needed for sustainability of the resources
  - Communication
  - Data sharing
  - Research
  - Local participation along with state, federal, and tribal authorities

# The Tijuana River Watershed

# La Cuenca del Río Tijuana



# TRW Vision Project

- Began late 2002, funding ended 2005
- Proposition 13 funds (Water Resources Board)
  - Non-point pollution source control
  - TRW is the only transborder watershed
- SDSU and SCERP support
- County of San Diego was partner
- Research team: SDSU, COLEF, UABC
  - 15 years of research in TRW



# TRW Vision Project Process

- Developed Binational Watershed Advisory Council (BWAC)
- Developed project website (<http://trw.sdsu.edu>)
- Identified data sources and data gaps
- Identified critical resources
- Stakeholder workshops held to identify opportunities and challenges
- Vision document drafted and public comments obtained

# TRW Vision Project Process

- Final version published in Spanish and English
- Accepted by Regional Water Quality Control Board
- Updates are added periodically
- BWAC continues to meet as part of Border 2012 Water Task Force for the region

# Vision Document Includes

- Water quantity and quality
- Ecology
- Waste
- Air
- Socio-economic issues
- Data gaps
- Challenges and opportunities
- Suggested priority actions
- Available on TRW website: **[trw.sdsu.edu](http://trw.sdsu.edu)**

# Recommendations from the Binational Vision Document

*Action: Develop formal mechanisms for transborder  
watershed management*

# Progress on Implementing TRW Vision

- Binational Technical Working Group has been formed for TRW under Border Liaison Mechanism
- Important information and data exchange
- Review of Vision document to determine which parts participating agencies can implement

# TRW Binational Planning and Management Options

- A new binational agency?
- A state-to-state accord?
  - Oversight by IBWC, Border 2012, CNA and USA counterpart, Border Liaison Mechanism?
- A municipal-to-municipal accord with federal supervision?
  - Joint Powers Authority that includes Mexican local agencies
  - Could be formed for sub-basins
  - Oversight by IBWC minute or Border 2012?
- A transborder Watershed Council?



**Severe Erosion Near Nejí in the Mexican Part of the Upper TRW**





Lake Morena at ten percent capacity





**Presas El Carrizo vista desde el Cerro Tecate. Valle de las Palmas, al fondo a la izquierda.**





Channelized Tijuana River at  
the International Boundary





**Precarious hillside settlement, Cañón Los Laureles**





**Sediments and trash in Tijuana Estuary, mainly from Mexico**





**Sediment deposited by one winter storm**





Sediment basins