

Sverdrup CORPORATION

Figure 5
PAB OIL AND CHEMICAL SERVICES
PIT BERM SOIL SAMPLE LOCATIONS
VERMILION PARISH, LA.

SAMPLE #

- ① Outside - 217-10-91
- ① Inside - 216-10-91
- ② Outside - 218-10-91
- ② Inside - 220-10-91
- ③ Outside - 225-10-91
- ③ Inside - 221-10-91
- ④ Outside - 222-10-91
- ④ Inside - 223-10-91

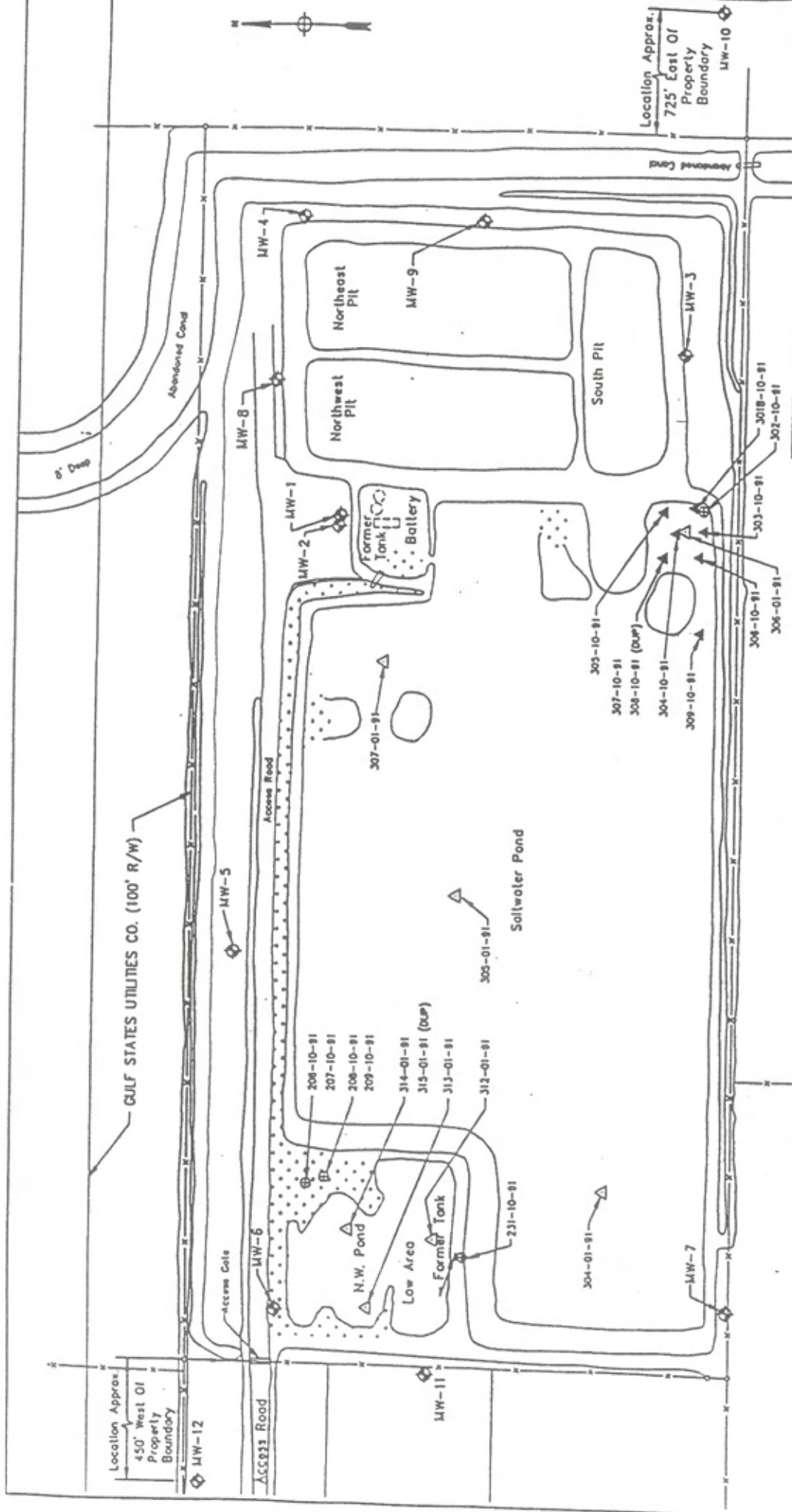
LEGEND

- ◆ Monitoring Well
- ① Pit Berm Soil Grab Sample Location

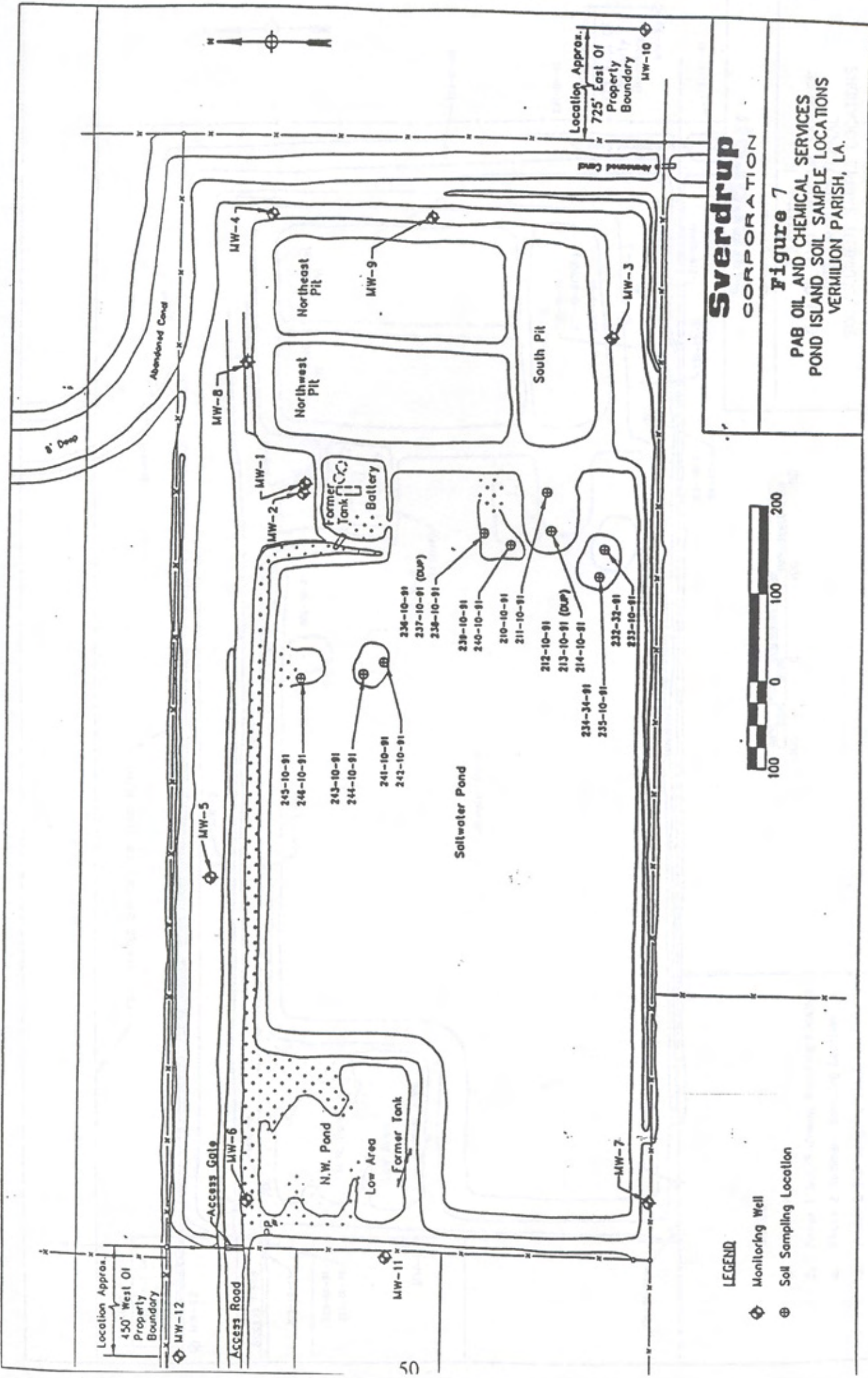
Note: Each Of The Four(4) Sets of Three(3) Numbered Locations Represent Two(2) Composite Samples; One From The Outside of the Berm And One From the Inside. Each Composite Was Generated From Three(3) Grab Samples Collected At Midheight On The Berms.

Sverdrup CORPORATION

Figure 6 PAB OIL AND CHEMICAL SERVICES POND SOIL SEDIMENT SAMPLE LOCATIONS VERMILION PARISH, LA.

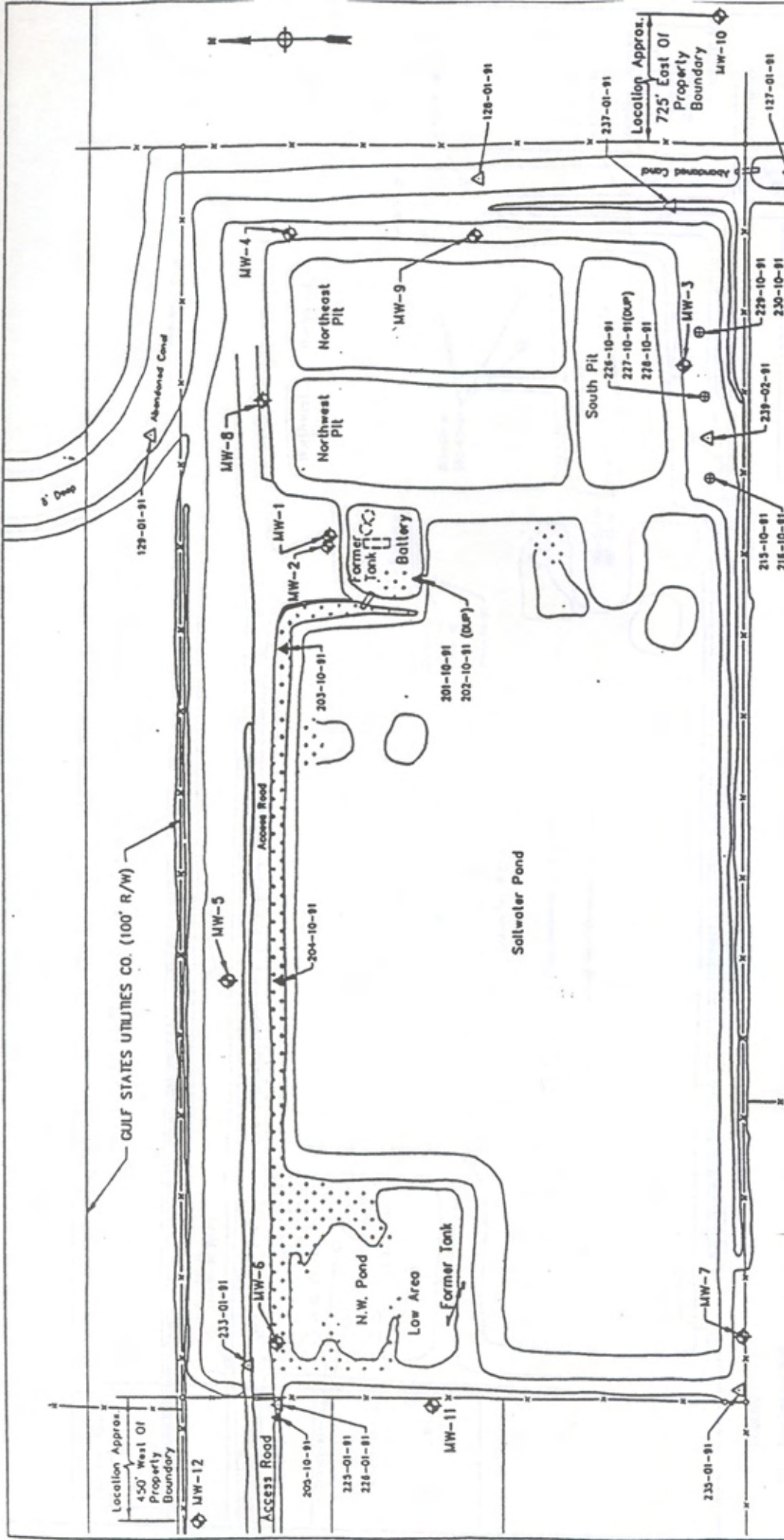


- LEGEND**
- ◇ Monitoring Well
 - △ Phase 1 Sediment Sampling Location
 - ▲ Phase 2 Sediment Sampling Location
 - ⊕ Phase 2 Sol Sampling Location



Sverdrup
CORPORATION

Figure 7
PAB OIL AND CHEMICAL SERVICES
POND ISLAND SOIL SAMPLE LOCATIONS
VERMILION PARISH, LA.



Sverdrup
CORPORATION

Figure 8
PAB OIL AND CHEMICAL SERVICES
SITE DRAINAGE/CANAL
SOIL/SEDIMENT SAMPLE LOCATIONS
VERMILION PARISH, LA.



- LEGEND**
- ◊ Monitoring Well
 - △ Phase 1 Soil/Sediment Sampling Location
 - ▲ Phase 2 Sediment Sampling Location
 - ⊕ Phase 2 Soil Sampling Location