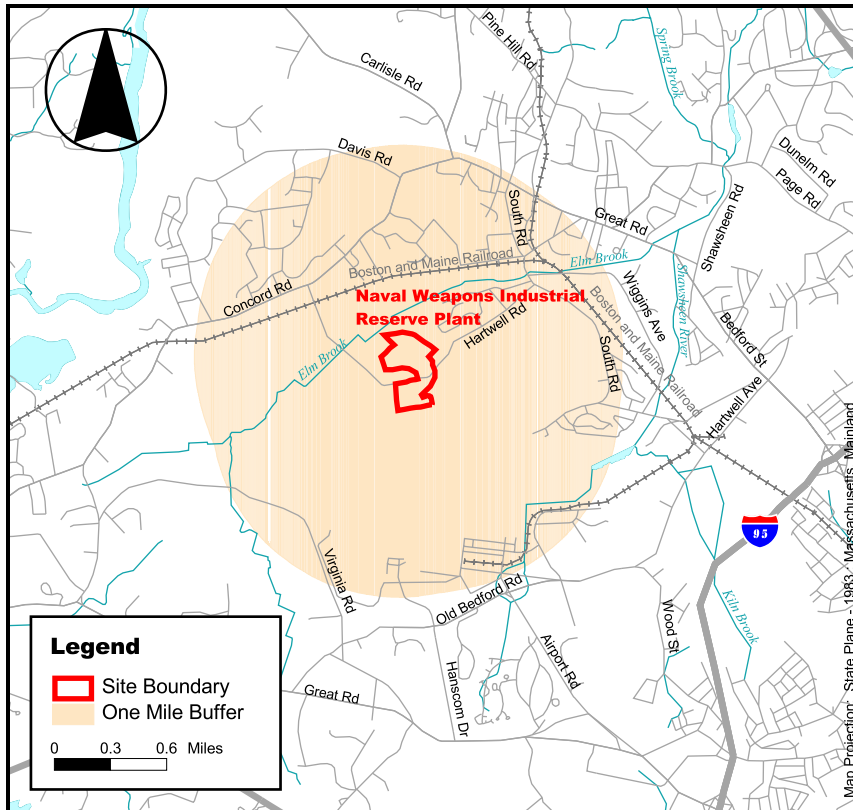
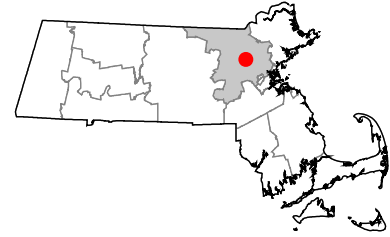


Naval Weapons Industrial Reserve Plant

FIGURE 3

Bedford, Massachusetts
EPA Facility ID MA6170023570

Site Location



Middlesex County, Massachusetts

Demographic Statistics Within One Mile of Site*	
Total Population	3523
White alone	3129
Black alone	74
Am. Indian and Alaska Native alone	10
Asian alone	232
Native Hawaiian and Other Pacific Islander alone	0
Some other race alone	24
Two or More races	53
Hispanic or Latino	67
Children Aged 6 and Younger	395
Adults Aged 65 and Older	361
Females Aged 15 - 44	751
Total Housing Units	1301

Base Map Source: 1995 TIGER/Line Files

Demographics Statistics Source: 2000 Census

*Calculated using an area-proportion spatial analysis technique

