

LACSD\JOHNSON MATTHEY CLASS 8 TRUCK SCRT SYSTEM TEST

Frank R. Caponi

Off-Road Emission Reduction Technology

SCAQMD

May 2007



TRUCK FACTS

- **1998 Kenworth Class 8 Transfer Truck**
- **Cummins Diesel M11 Engine**
- **Transfers Residual Trash from DART MRF to Puente Hills Landfill**
- **Truck Mileage – 360,000 miles**

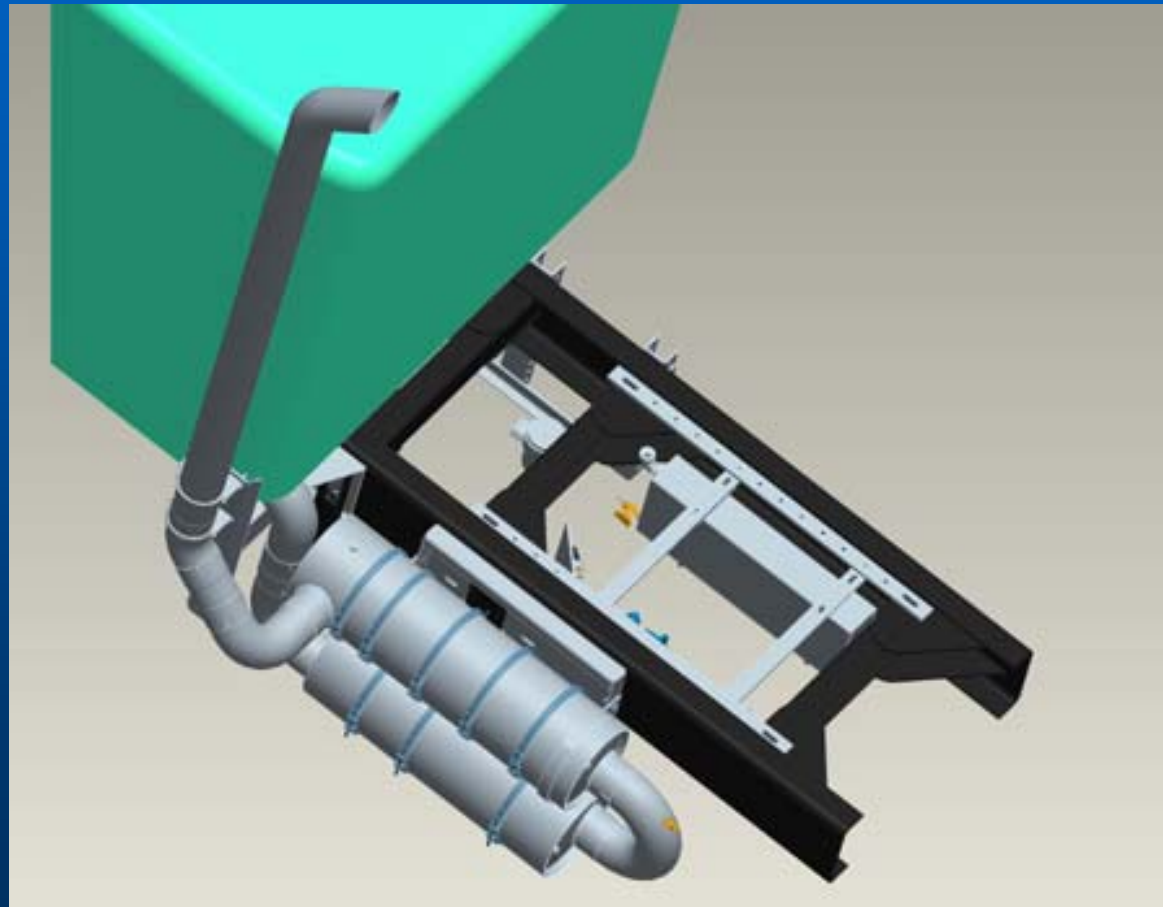
JM FILTER FACT

- SCRT System
- Diesel Particulate Filter followed by a SCR Catalyst
- Urea Injection – 5 Gal. Tank
- Ammonia Clean-up System
- System Weight – 750 lbs

CLASS 8 TRANSFER TRUCK



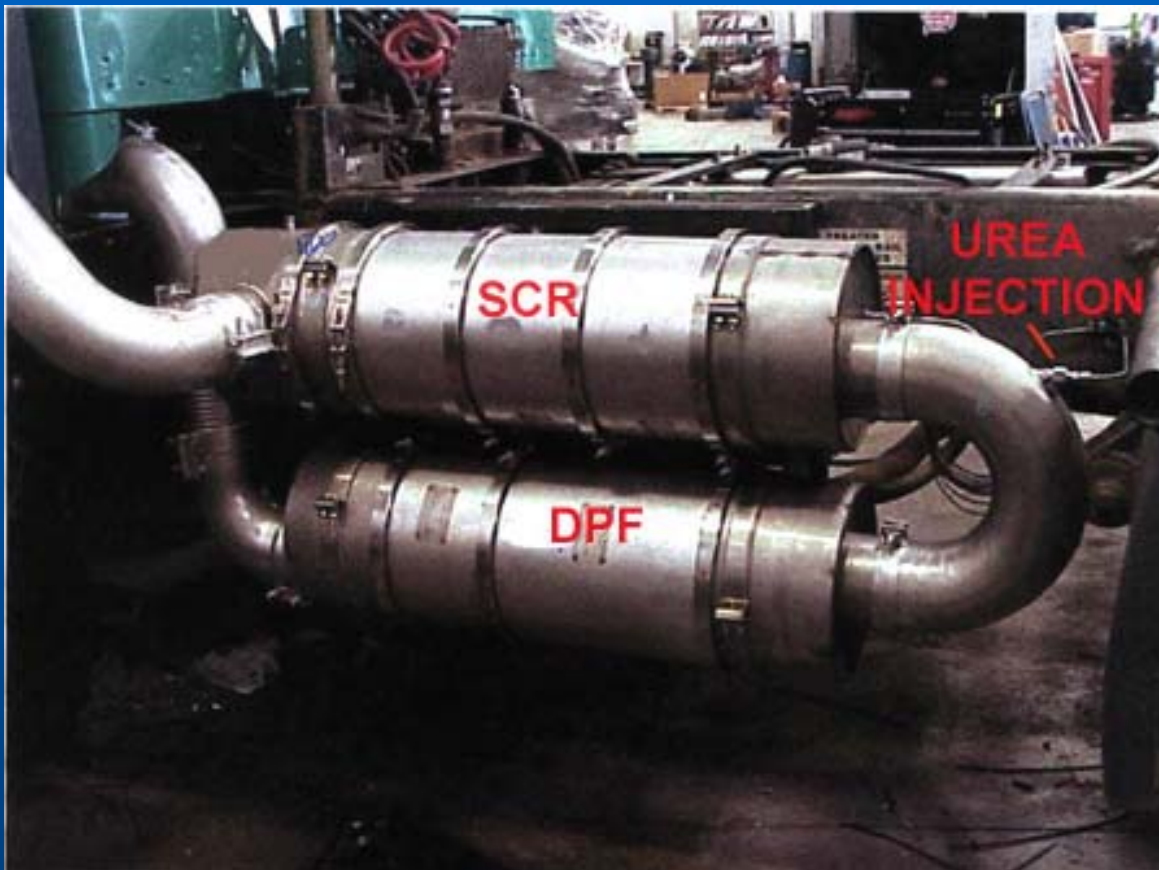
JM SCRT SYSTEM



JM SCRT SYSTEM



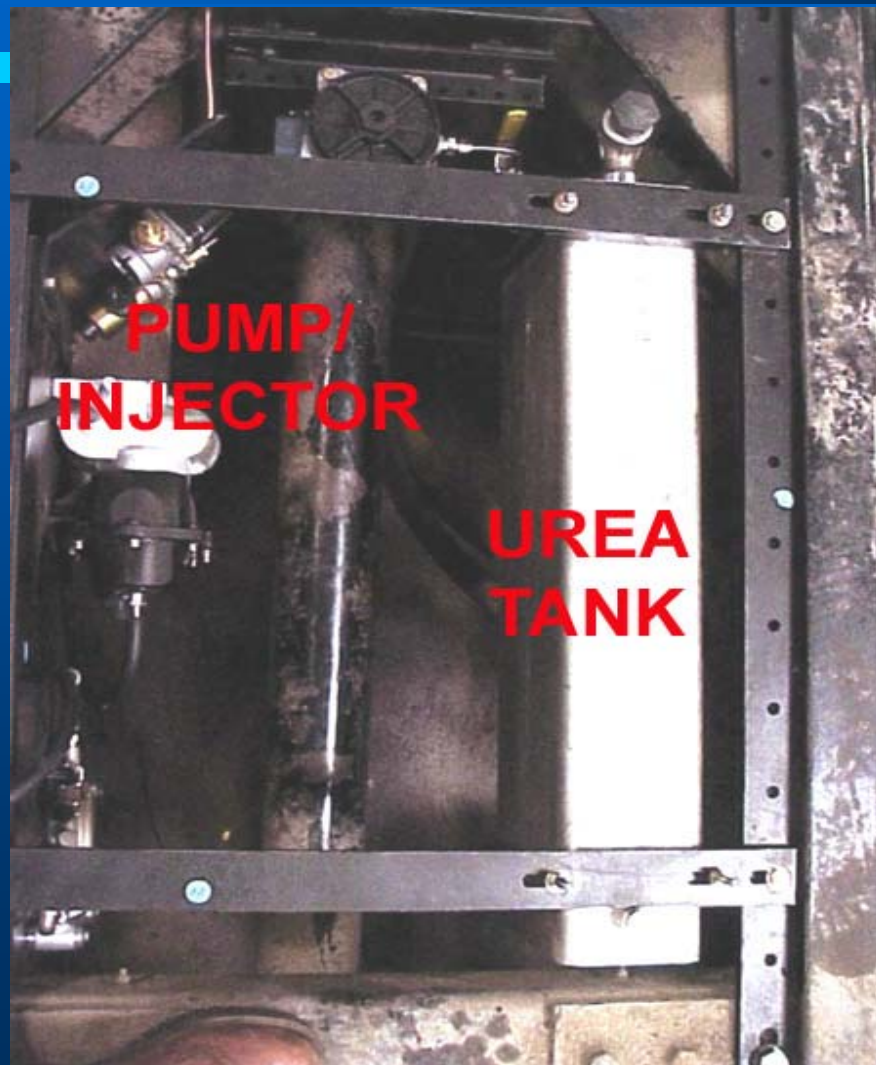
JM SCRT SYSTEM



JM SCRT SYSTEM



JM SCRT SYSTEM



OPERATIONAL DATA

- SCRT Installed 5/05
- Accumulated Miles – 39,000
- Urea Consumption – Approx. 1 to 3 gallons/day
- Oil – No Change in Oil Consumption
- Fuel Mileage – Approx. 10% Drop
- Performance – Reduced Power on Upgrades; otherwise O.K.

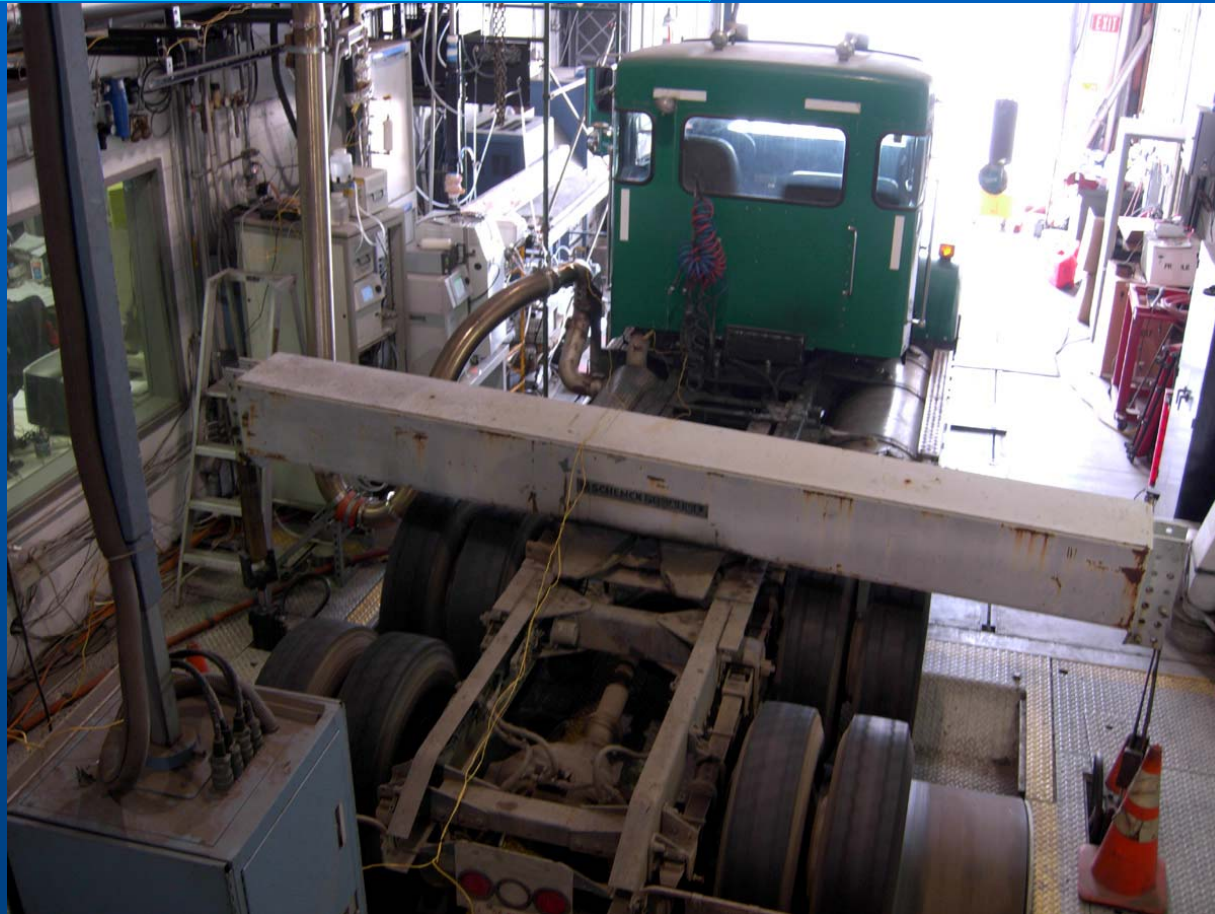
OPERATIONAL DATA

- **10% Reduction in Fuel Mileage?**
 - Increased payload of SCRT on return trips from landfill?
 - Increased engine backpressure?
- **Reduced Power on Upgrades?**
 - Increased engine backpressure?

EMISSION TESTING

- Preliminary Test Shows up to 80% NO_x Removal, but Variable and Dependent upon Temperature
- Comprehensive Testing Underway at ARB Emission Test Facility
- Stay Tuned

EMISSION TESTING – ARB TEST FACILITY



EMISSION TESTING – ARB TEST FACILITY



NEXT STEPS/ISSUES

- Test System on a Off-Road Vehicle
- Power Reduction – Problem?
- Equipment Retrofit – Location Problems?

OFF-ROAD PM TRAP TEST PROGRAM – Location Issues



OFF-ROAD PM TRAP TEST PROGRAM – Location Issues

