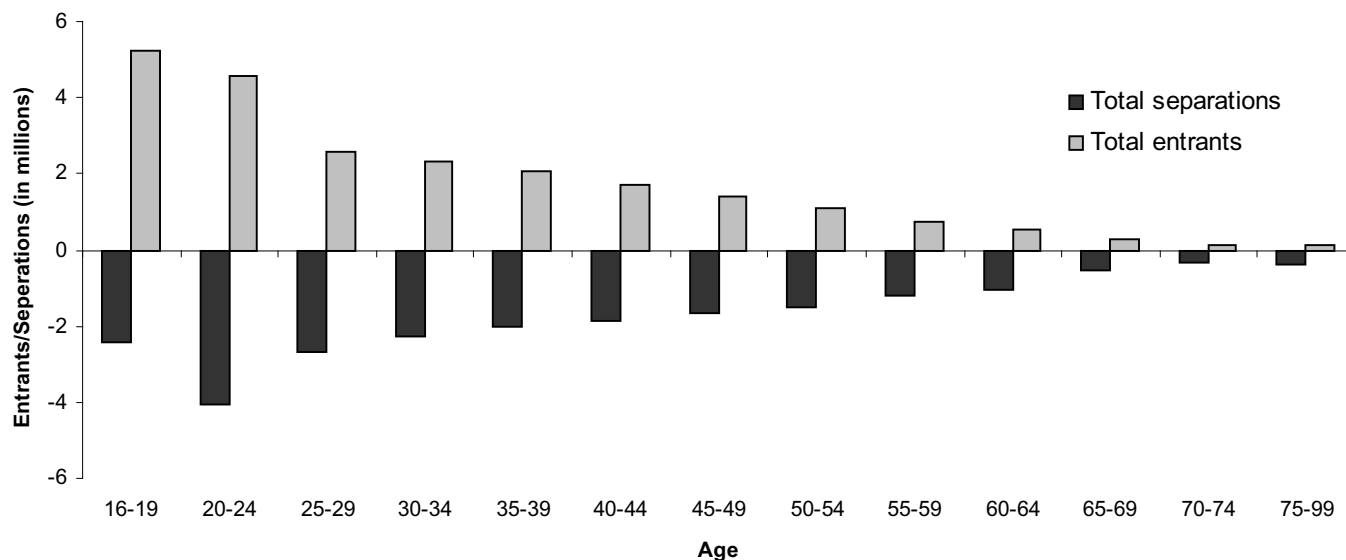


Figure 1. Total and net occupational entrants and separations

Figure 1 illustrates the differences between total and net separations. For each age group, the figure shows total and net occupational entrants and separations. Most of the younger age groups exhibit an excess of total entrants over total separations as more young people begin working in an occupation than leave the occupation. This excess is referred to as *net entrants*. Likewise, the excess of total separations over total entrants in older age groups is referred to as *net separations*.

Total separations:

- Occur in all age groups
- Are independent of the total number of entrants
- Identify all of the normal movements out of occupations



Net separations:

- Occur only when total separations exceed total entrants within an age group
- For an occupation, are the sum of separations for each age group
- Exclude information about net entrants

