

National Weekly Cattle And Beef Summary

Des Moines, Iowa

Mon Aug 24, 2009

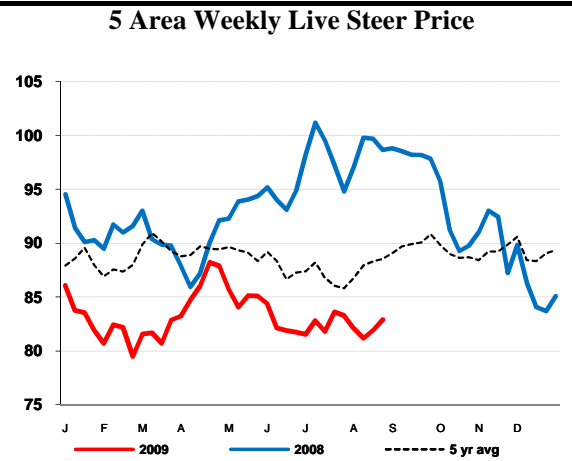
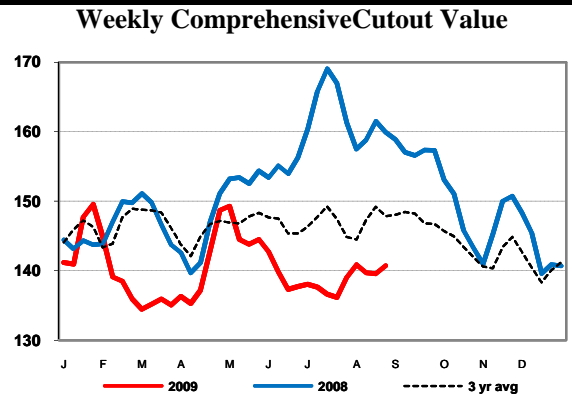
USDA Livestock & Grain Market News

For Week Ending:

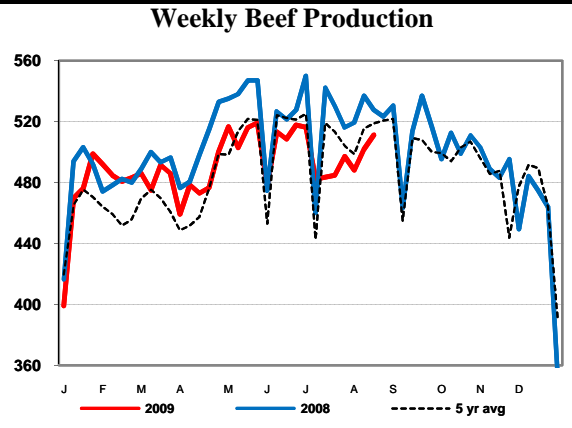
8/22/2009

	<u>This Week</u>	<u>Prior Week</u>	<u>Last Year</u>
LM_XB463			
CUTOUT VALUES	140.72	139.59	159.94
Primal Rib	213.46	214.23	223.73
Primal Chuck	111.17	108.86	136.22
Primal Round	121.53	119.28	146.26
Primal Loin	196.83	196.35	209.90
Primal Brisket	97.78	98.01	106.28
Primal Short Plate	96.15	97.50	119.73
Primal Flank	89.04	87.97	95.67

WEEKLY VOLUME BREAKDOWN			
Total Loads	8661	9053	7672
Prime Loads	32	36	37
Branded Loads	768	793	564
Choice Loads	2090	2270	1784
Select Loads	1617	1989	1449
Ungraded Loads (cuts, trims, grinds)	4153	3965	3838
TYPE OF SALES			
Negotiated Sales 0-21 Day	2947	3238	3000
Negotiated Sales 21+ Day	1485	1451	622
Formula Sales	3320	3190	3310
Forward Contract Sales	907	1175	740
Domestic Sales	8043	8360	7010
NAFTA Exports	410	267	No Comp
Overseas Exports	207	427	No Comp

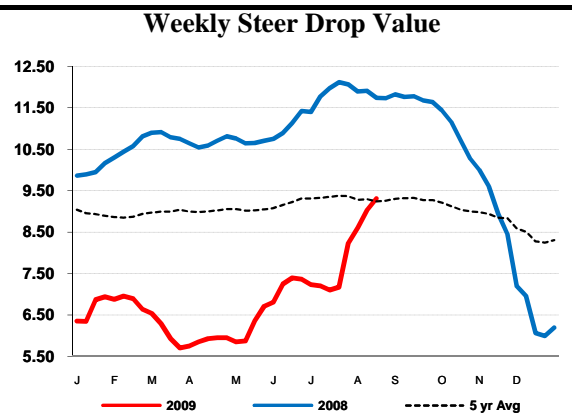


LM_CT150			
5 AREA WEEKLY WEIGHTED CATTLE PRICE			
Live Steer	82.91	81.92	98.66
Live Heifer	83.14	81.93	98.79
Dressed Steer	130.94	130.34	155.70
Dressed Heifer	131.15	129.84	155.78



NW_LS441			
WEEKLY USDA BY-PRODUCT DROP VALUE (STEER)			
	9.31	9.03	11.73

SJ_LS712			
BEEF PRODUCTION			
	(Estimate)	(Estimate)	(Actual)
Slaughter	653,000	643,000	674,000
Live Weights	1288	1285	1291
Dressed Weights	785	783	785
Beef Production (mil lbs)	511.3	501.8	527.8



NW_LS196			
NATIONAL STEER & HEIFER ESTIMATED GRADING PERCENT			
For Week Ending: Aug 08, 2009			
Total Quality and Yield Grades for All Regions			
Prime	2.59%	2.53%	2.32%
Choice	59.75%	58.48%	55.10%
Select	31.96%	33.41%	35.11%
Percentage by Class			
Steer	51.74%	52.00%	50.94%
Heifer	28.67%	28.78%	29.24%
Dairy Cow	7.90%	7.62%	7.69%
Other Cow	9.80%	9.75%	10.18%
Bulls	1.89%	1.85%	1.93%

USDA Livestock & Grain Market News
 Des Moines, Iowa
 Phone: 515-284-4460
 Email: desm.lgmn@usda.gov
www.ams.usda.gov/LSMarketNews