



USDA WEEKLY NATIONAL LAMB MARKET SUMMARY

Livestock, Meat, Wool, Pelt, & International Markets

Friday, August 21, 2009

Vol. 16 No. 34

National Sheep Summary

Weekly Trends: Compared to last week slaughter lambs steady to 5.00 lower, except at New Holland 2.00-3.00 higher; slaughter ewes mostly steady to 5.00 higher, except at New Holland and Ft Collins 3.00-6.00 lower; feeder lambs mostly steady to 2.00 higher. At San Angelo, TX 9125 head sold in a one day sale. Equity Electronic Auction sold 819 slaughter lambs in Wisconsin; North Dakota and Minnesota. In direct trading slaughter ewes steady; feeder lambs steady to 2.00 lower.

Slaughter Lambs: Choice and Prime 2-3 90-160 lbs:

San Angelo: shorn and woolled 90-115 lbs 85.00-90.00.
 Eastern Area (VA and PA): woolled 80-110 lbs 90.00-109.00; 110-125 lbs 85.00-100.00; 130-160 lbs 93.00-100.00 in VA and in PA 90-110 lbs 118.00-135.00; 110-130 lbs 108.00-124.00; 130-150 lbs 110.00-119.00.
 Inter Mt Area (CO, WY and MT): shorn 115-145 lbs 84.00-91.00; woolled 90-105 lbs 97.00-103.00, 110-115 lbs 94.00-100.00, 115-125 lbs 86.00-90.00.
 Kalona, IA: shorn 110-140 lbs 89.50-91.00, 160 lbs 88.50; woolled 115-140 lbs 91.00-92.00, 140-155 lbs 84.50-87.25.
 South Dakota: shorn 125-135 lbs 90.00-93.00; woolled 110-155 lbs 90.00-92.50.
 Oklahoma: 100-110 lbs no test.
 Missouri: 100-130 lbs 85.00-95.00, few 95.00-97.00.
 Equity Elec: shorn and woolled 125-140 lbs 95.25-97.00.

Slaughter Lambs: Good and Choice 1-2:
 San Angelo: 40-70 lbs 95.00-100.00; 70-100 lbs 85.00-95.00, set 99.50. hair lambs 40-100 lbs 85.00-97.00, set 102.00.
 Pennsylvania: 40-50 lbs 142.00-156.00; 50-60 lbs 140.00-152.00; 60-70 lbs 136.00-148.00; 70-80 lbs 130.00-144.00; 80-90 lbs 120.00-140.00.
 Kalona, IA: 62 lbs 119.00; 70-80 lbs 103.50-105.00, set 116.00; 80-90 lbs 92.00-99.00; 95-110 lbs 90.50-96.00.
 Inter Mt Area: 56 lbs 113.00; 60-70 lbs 96.00-97.00; 70-85 lbs 93.00-100.00; 95-105 lbs 96.00-98.00. hair lambs 50-55 lbs 77.00-83.00; 60-70 lbs 86.50-91.00.
 Missouri: 50-60 lbs 112.00-116.00; 70-80 lbs 90.00-116.00; 80-95 lbs 101.00-105.00. hair lambs 50-60 lbs 97.00-116.00; 60-70 lbs 95.00-110.00; 70-80 lbs 61.00-90.00; 80-90 lbs 71.00-91.00; 100-115 lbs 61.00-65.00.
 Virginia: 30-60 lbs 100.00-114.00; 60-90 lbs 90.00-120.00.
 Direct Trading: (Lambs fob with 3-4 percent shrink or equivalent)
 TX: 4000: Feeder Lambs 65-85 lbs 95.00-100.00.
 MT: 1800: Feeder Lambs 90-95 lbs 90.00-91.00.
 UT: 2000: Feeder Lambs 100-105 lbs 93.50.
 ID: 10300: Feeder Lambs 110-115 lbs 93.00 fob; 115-120 lbs 100.00 del.
 CO: 3400: Feeder Lambs 105-110 lbs 95.00 del.
 Eastern
 Cornbelt: 800: Slaughter Lambs woolled Choice and Prime 2-3 90-110 lbs 98.00; 110-130 lbs 93.50. Good and Choice 1-2 60-90 lbs 105.00.
 Slaughter Ewes Utility and Good 1-3 26.00-29.00; Cull and Utility 1-2 26.00.

Slaughter Ewes:

San Angelo: Utility and Good 1-3 40.00-51.00, high-yielding 51.00-56.50; Utility 1-2 34.00-40.00; Cull and Utility 1-2 22.00-34.00; Cull 1 10.00-21.00.
 Pennsylvania: Good 2-3 38.00-60.00; Utility 1-2 23.00-42.00.
 Ft. Collins: Good 3-4 35.00-42.00; Good 2-3 45.50-50.00; Utility 1-2 24.00-30.50.
 Billings, MT: Good 2-3 25.50-36.75; Utility 1-2 24.50-30.00; Cull and Utility 1-2 20.50-21.00.
 So Dakota: Good 2-3 21.00-38.00; Utility and Good 1-3 28.00; Utility 1-2 13.00-15.00.
 Oklahoma: Good 2-3 no test; Utility 1-2 no test; Cull 1 no test.
 Missouri: Utility and Good 1-3 35.00-38.00.

Virginia: Good 2-4 30.00-37.00; Utility 1-2 30.00-33.00; Cull 1 30.00.
 Kalona: Good 2-3 33.00-35.00; Utility 1-2 23.50-31.00; Cull 1 16.00-21.00.
Feeder Lambs: Medium and Large 1-2:
 San Angelo: 45-60 lbs 97.00-101.00; 60-70 lbs 95.00-104.50; 70-80 lbs 93.00-101.50; set 83 lbs 94.00; 90-100 lbs 97.00-102.50.
 Virginia: 40-60 lbs 90.00-100.75; 60-90 lbs 90.00-94.50.
 Inter Mt area: 55-80 lbs 91.00-99.00; 80-110 lbs 85.50-95.00; 110-120 lbs 88.00-98.00; 125-140 lbs 90.00-92.00.
 Kalona: 56 lbs 90.00; 66 lbs 110.00.
 So Dakota: 60-70 lbs 91.00-105.00; 70-75 lbs 90.00-104.50; 80-90 lbs 100.75-104.00; 90-100 lbs 90.50-101.00; 100-110 lbs 87.00-92.50; 122 lbs 85.50.
 Missouri: 75-85 lbs 105.00-109.00.

Replacement Ewes: Medium and Large 1-2:

San Angelo: middle age 100-145 lbs 50.50-55.00 cwt; hair ewe lambs 70-95 lbs 105.00-111.00 cwt, set 71 lbs 119.00 cwt.
 Ft. Collins: Yearlings 90.00 per head, other yearlings 115-190 lbs 56.00-57.00 cwt; mixed age 97.00 per head; aged 87.50-90.00 per head.
 Billings: Mixed age feeding ewes 125-205 lbs 32.00-42.00 cwt.
 Missouri: Mixed age hair ewes 90-170 lbs 58.00-81.00 cwt.

National Daily Lamb Carcass

Negotiated sales for delivery within 14 calendar days, FOB Plant basis

Compared to last week: Carcass lambs traded mixed with 65#'s and down trading firm to higher; 65#'s and up traded 0.21 to 1.44 lower.

Today's trades not reportable because they did not meet the 3/70/20 guideline or carcass lambs. Below is the last reported market as of 8/19/2009.

DAILY CHOICE AND PRIME, YG 1-4

Weight		Wt Avg
45-DN	*	339.17
45-55#	*	257.22
55-65#	*	218.99
65-75#	*	212.54
75-85#	*	209.59
85-UP	*	200.26

* SAT-FRI	CHOICE AND PRIME, YG 1-4	Head	6,907
Weight	Head	Wt Avg	
45-DN	207	324.67	
45-55#	416	253.96	
55-65#	1,483	224.90	
65-75#	2,109	214.76	
75-85#	1,786	210.27	
85-UP	906	200.31	

USDA National Lamb Estimated Grading Percent

Week Ending 8/8/2009: Actual FIS Sheep Slaughter 41,672 head. 38,917 Lambs, 93.4% of total sheep slaughtered. 28,960 graded, 74.41% of total lambs slaughtered.

GRADE BREAKDOWN	Yield Grade (May include hindsaddles)					Total
	1	2	3	4	5	
Prime	0.00%	2.09%	3.80%	1.83%	0.92%	8.64%
Choice	5.83%	36.16%	35.55%	10.55%	3.27%	91.36%
Total %	5.83%	38.25%	39.35%	12.39%	4.18%	

HIGHLIGHTS

SLAUGHTER LAMBS

Choice & Prime 2-3
Shorn & Woolled
(130-160 pounds)

Latest	Last Wk	Last Yr
San Angelo, TX		
N/Q	N/Q	N/Q
El Reno, OK		
N/Q	N/Q	N/Q
Ft Collins, CO		
N/Q	91.05	94.50

SLAUGHTER EWES

Good 2-4

Latest	Last Wk	Last Yr
San Angelo, TX		
45.50	40.25	38.50
St. Onge, Newell, SD		
30.25	30.67	N/Q
Ft. Collins, CO		
42.50	46.50	29.25
Sioux Falls, SD		
34.00	34.00	26.00

FEEDER LAMBS

Medium-Large 1-2
Woolled (90-110 pounds)

Latest	Last Wk	Last Yr
San Angelo, TX		
99.75	N/Q	N/Q
St. Onge, Newell, SD		
94.00	97.75	N/Q
Ft. Collins, CO		
95.00	N/Q	94.25

CARCASS LAMB

FOB PLANT WT AVG

	Last Week	Latest
45#-Dn	335.00	339.17
45-55#	247.53	257.22
55-65#	215.08	218.99
65-75#	212.11	212.54
75-85#	208.89	209.59
85#-Up	200.06	200.26
	Last Year	
45#-Dn	256.90	
45-55#	259.41	
55-65#	229.19	
65-75#	228.13	
75-85#	227.76	
85-Up	222.00	

National Boxed Lamb Cuts

FOB Plant basis negotiated sales for delivery within 0-21 day period, fresh and frozen carlot volume, including sales since last report, U.S. dollars per 100 pounds.

Current Volume
 Fresh Cuts 968,891 pounds
 Frozen Cuts 263,340 pounds

Items with no entries indicate non-reportable trades.

FRESH CHOICE & PRIME CUTS

IMPS	Sub-Primal	# Of Trades	Total Pound	Weighted Average	Change from Prior Days
200A	Carcass, 3-way, 55/65	4	782	\$272.46	0.66
202	Foresaddle	5	40,158	\$218.13	0.00
204	Rack, 8-Rib, light	10	687	\$517.02	(3.53)
204	Rack, 8-Rib, medium	87	14,816	\$480.96	1.67
204	Rack, 8-Rib, heavy	4	425	\$490.33	13.56
204A	Rack, chined	47	10,953	\$567.97	(17.03)
204B	Rack, roast-ready	22	6,617	\$856.09	(2.39)
204C	Rack, roast-ready, frenched	213	24,101	\$932.24	(16.77)
204D	Rack, roast-ready, special	19	3,476	\$1,215.55	(13.83)
206	Shoulders	102	109,910	\$183.98	1.26
207	Shoulders, square-cut	180	127,176	\$221.90	(3.26)
208	Shoulders, square-cut, bnls	18	2,511	\$405.93	11.54
209	Breast	86	30,275	\$96.83	(2.17)
	Breast, bulk	18	14,535	\$70.88	(1.37)
209A	Ribs, Breast bones off	33	3,572	\$345.71	3.36
210	Foreshank	204	20,870	\$297.41	1.47
229	Hindsaddle, long-cut	3	286	\$308.90	0.00
231	Loins	22	3,446	\$319.20	4.23
232	Loins, trimmed 4x4	75	14,641	\$410.06	1.37
232	Loins, trimmed 2x2	4	1,027	\$517.96	(0.50)
232	Loins, trimmed 1x1	7	2,552	\$608.64	(4.55)
232	Loins, trimmed 0x0	4	46	\$1,485.28	0.00
232A	Loins, short-cut, 2x2	18	2,886	\$514.88	(5.07)
232A	Loins, short-cut, 1x1	67	11,249	\$586.25	9.69
232A	Loins, short-cut, 0x0	62	9,664	\$697.28	(4.89)
232C	Loins, boneless, tied	9	384	\$1,179.61	185.56
232E	Flank, untrimmed	16	14,851	\$54.66	(0.53)
233	Legs	75	44,490	\$246.52	(1.50)
233A	Leg, trotter-off	192	51,398	\$249.73	1.39
233C	Leg, trotter-off, partial bnl	42	7,875	\$356.62	(3.24)
233E	Leg, steamship	21	4,469	\$325.24	(4.54)
233F	Hindshank	43	11,566	\$283.09	(1.27)
234	Leg, Boneless, Tied	157	40,937	\$385.63	(3.12)
234A	Leg, shank off, bnls	57	9,375	\$393.19	5.08
234E	Leg, inside, boneless	86	12,177	\$535.12	0.00
234G	Sirloin, boneless	27	1,925	\$416.89	(0.16)
235	Back	3	220	\$428.48	0.00
236	Back, trimmed	20	250	\$567.77	0.00
238	Trimnings	27	2,325	\$254.30	(6.64)
239	Special trimnings	17	410	\$219.85	0.39
295	Lamb for stewing	42	5,233	\$475.66	24.45
296	Ground lamb	102	14,512	\$354.28	(8.13)
	Necks	25	3,562	\$80.27	(2.14)

FROZEN CHOICE & PRIME CUTS

IMPS	Sub-Primal	# Of Trades	Total Pound	Weighted Average	Change from Prior Days
204	Rack, 8-Rib, medium	11	11,780	\$354.29	(14.00)
206	Shoulders	5	3,155	\$207.65	0.00
207	Shoulders, square-cut	3	5,637	\$149.90	0.00
209	Breast	8	11,396	\$73.40	0.54
	Breast, bulk	7	16,851	\$54.86	0.00
209A	Ribs, Breast bones off	7	769	\$270.51	0.00
210	Foreshank	7	2,022	\$314.42	5.47
232	Loins, trimmed 1x1	7	7,922	\$441.98	0.00
232A	Loins, short-cut, 1x1	5	10,317	\$474.74	4.46
232E	Flank, untrimmed	6	54,003	\$59.79	0.00
233A	Leg, trotter-off	8	18,721	\$202.87	0.00
233F	Hindshank	5	2,771	\$286.70	(2.05)
234	Leg, Boneless, Tied	12	4,227	\$366.55	3.06
234A	Leg, shank off, bnls	3	341	\$313.58	0.00
234E	Leg, inside, boneless	7	744	\$590.31	98.93
238	Trimnings	13	12,937	\$111.84	(1.34)
295	Lamb for stewing	19	2,710	\$405.33	(3.85)
296	Ground lamb	30	4,346	\$318.98	0.65
	Necks	16	32,921	\$57.60	3.08

National Weekly Comprehensive Lamb Carcass

Combined Negotiated, Formula and Forward Contract sales for delivery within 14 calendar days, FOB Plant basis.

Items with no entries indicate non-reportable trades.

CHOICE AND PRIME, YG 1-4	Head	7,559
Weight	Head	Wt Avg
45-DN		
45-55#		
55-65#		
65-75#		
75-85#		
85-UP		

CHOICE AND PRIME, YG 5	Head	247
Weight	Head	Wt Avg
45-DN		
45-55#		
55-65#		
65-75#		
75-85#		
85-UP		

CERTIFIED FRESH AMERICAN LAMB	Head	Wt Avg
Weight	Head	Wt Avg

UNGRADED	Head	288
Weight	Head	Wt Avg
45-DN		
45-55#		
55-65#		
65-75#		
75-85#		
85-UP		

USDA Estimated National Lamb Carcass Cutout

Based on 5-Day Rolling weighted average FOB plant prices collected under Mandatory Price Reporting and industry yields.

*** Based on information provided by major lamb breakers the lamb cut percentages have been updated ***

CUTS	FOB PRICE	CHANGE	%	CARCAS	LBS.
FORESADDLE					
204 RACK, 8-RIB MEDIUM	480.96	1.68	10.77%	7.43	
209 BREAST **	78.33	-1.02	8.85%	6.11	
207 SHOULDERS, SQ-CUT	221.90	-3.26	23.53%	16.24	
210 FORESHANK	297.41	1.47	3.82%	2.64	
NECK **	59.81	3.06	2.22%	1.53	
HINDSADDLE					
232 LOINS, TRIMMED 4X4	410.06	1.37	10.97%	7.57	
232E FLANK UNTRIMMED **	58.68	-0.15	3.39%	2.34	
233A LEG, TROTTER OFF	249.73	1.39	31.88%	22.00	

GROSS CARCASS VALUE: 250.27 0.04 95.45% 65.86

FORESADDLE VALUE	251.34	-1.12	49.20%	33.95
HINDSADDLE VALUE	273.77	1.27	46.24%	31.91

Carcass value less process/packaging per cwt cost of \$31.50

NET CARCASS VALUE 218.77 0.04

* Shrink and trim of 3.14 lb's not reflected in cutout value
 * Based on Actual Federally Inspected Slaughter Carcass Weight of 69 lbs. for W/E 8/08/09, up 1 pound from last week.
 **Includes Fresh and Frozen Product

Actual Slaughter Under Federal Inspection

For W/E 08/08/2009

Monday	8,362
Tuesday	7,113
Wednesday	9,512
Thursday	9,360
Friday	7,286
Saturday	39
Total	41,672

Lambs & Yearlings 93.4%
 Mature Sheep 6.6%

RED MEAT PRODUCTION

(Estimated, except *Actual*)

Production Mil.Lbs.

22-Aug-2009	2.9
15-Aug-2009	2.9
Change	0.0%
23-Aug-2008	3.0
Change	-3.3%
2009 YTD:	102.2
*2008 YTD: *	108.3
Change	-5.6%
08-Aug-2009	2.9

Average Live

Weights

22-Aug-2009	136
15-Aug-2009	137
23-Aug-2008	134
08-Aug-2009	137

Dressed

22-Aug-2009	69
15-Aug-2009	69
23-Aug-2008	68
08-Aug-2009	69

Slaughter

22-Aug-2009	43,000
15-Aug-2009	42,000
Change	2.4%
23-Aug-2008	44,000
Change	-2.3%
2009 YTD:	1,437,000
*2008 YTD:	1,536,000
Change	-6.4%

New Zealand Meat and Wool Export Summary

LAMB: The NZ lamb quota to the EU of 227,000 MT is currently around 84% filled, sitting at the same level as this time last year. Based on the lower lamb numbers available this season, it is difficult to see how this quota will be completely filled. Export meat prices remained steady again last week, despite the increased strength of the NZ dollar relative to major trading partners. This is mostly due to the reduced supply and stable demand from NZ's main markets. Unfortunately, this is not the case for schedules this week, with the majority of meat processing companies easing prices between 5 and 10c/kg further on last week.

		Week Ending 15-Aug-09	Week Ending 08-Aug-09
Lamb (\$/Head)	Fat Cover (mm)		
	0-6	30.76	30.55
	7-12	60.66	60.23
	14-18	82.59	82.03
Pelt	2 lb	0.55	0.54
Ewe (\$/Head)	46 lbs	33.97	33.50
Wool (c/cwt clean)	(microns)		
	Fine 21	268.53	264.90
	Medium 25	222.26	219.09
	Coarse 35	95.71	94.35

Notes: All prices are U.S. Dollars. / All meat prices are carcass based and net to farmers.
Lamb values include a 1 kg shorn pelt. Ewe values at 0.5 kg pelt.

Canadian Federally Inspected Slaughter

	Current 08/08/09	Week Ago 08/01/09	Year Ago 08/02/08	YTD 2009	YTD 2008	%Change
Cattle:	57,523	58,213	61,641	1,868,999	1,907,671	-2.0%
Calves:	4,166	4,854	4,670	144,839	151,780	-4.6%
Sheep:	3,066	2,246	3,346	95,014	99,961	-4.9%
Hogs:	364,782	409,776	373,825	12,303,753	12,001,663	2.5%

Texas Sheep Export Figures

THURSDAY, 08/20/2009	WEEK-TO-DATE	YR-TO-DATE	PREV YTD	PERCENT
	*	*	*	CHANGE
Slaughter				
Lambs	0	0	0	0
Ewes	125	125	47,939	78,737
Breeding Males	0	0	0	0
Breeding Females	0	0	0	0
Total	125	125	47,939	78,737 -42.55%

Lamb & Mutton Imports

METRIC TONS OF LAMB FOR REPORTING PERIOD: 6/28/09-7/04/09						
COUNTRY OF ORIGIN	Manufact	Carcasses	Cuts	Misc Fresh	Processed	TOTAL
Australia	0	33	551	0	0	584
Canada	0	0	0	0	0	0
New Zealand	0	17	257	14	0	288
Other	0	0	0	0	0	0
Total	0	51	807	14	0	873

METRIC TONS OF MUTTON FOR REPORTING PERIOD: 6/28/09-7/04/09						
COUNTRY OF ORIGIN	Manufact	Carcasses	Cuts	Misc Fresh	Processed	TOTAL
Australia	0	0	0	0	0	0
Canada	0	0	0	0	6	6
New Zealand	0	0	0	0	0	0
Other	0	0	0	0	0	0
Total	0	0	0	0	6	6

LAMB	Australia	Canada	N Zeal	Other	Total
Wk Ending 4-Jul-09	584	0	288	0	873
Prev Week 27-Jun-09	453	0	269	0	722
Year Ago 5-Jul-08	549	0	215	0	764
2008 YTD	14241	4	8312	1	22558
2009 YTD	14073	5	8361	5	22445
2009 to 2008 by %	98.82%	130.75%	100.59%	499.00%	99.50%

National Weekly Lamb Carcass and Lamb Cuts – Imported Product

FOB cold storage; negotiated sales for delivery within 0-21 days and for delivery 22/Up days; fresh and frozen carlot volume; U.S. dollars per 100 pounds.

Items with no entries indicate non-reportable trades

WEEKLY VOLUME		AUS = Australian	NZ = New Zealand
Negotiated Sales 0-21 days:			
Fresh Cuts =	684,572 Pounds	Fresh Cuts =	Pounds
Frozen Cuts =	759,292 Pounds	Frozen Cuts =	Pounds

NEGOTIATED SALES 0-21 DAYS, FRESH				
Sub-Primal	# of Trades	Total Pounds	Price Range	Weighted Average
AUS Rack, FR, Cap-off, 20-24 oz	17	7,969	620.00- 889.00	699.55
AUS Rack, FR, Cap-off, 24-28 oz	23	4,316	710.00- 877.00	791.65
AUS Rack, FR, Cap-off, 28 oz/up	17	4,674	777.00- 864.00	814.88
AUS Shoulder, Square-cut	27	96,713	140.00- 225.00	180.56
AUS Foreshank, VP	16	4,949	270.00- 371.00	288.80
AUS Shortloin, 1-Rib, 1x1	17	19,036	355.00- 507.00	376.37
AUS Loin, Eye of, ss-off, 8 oz/dn	4	455	980.00-1,129.00	1,057.70
AUS Leg, semi bnls	17	17,046	257.00- 373.00	300.55
AUS Leg, bnls	32	21,067	255.00- 385.00	305.20

NEGOTIATED SALES 0-21 DAYS, FROZEN				
Sub-Primal	# of Trades	Total Pounds	Price Range	Weighted Average
AUS Rack, FR, Cap-off, 20 oz/dn	10	7,439	559.00- 650.00	636.36
AUS Rack, FR, Cap-off, 20-24 oz	8	3,160	642.00- 789.00	758.57
AUS Rack, FR, Cap-off, 24-28 oz	10	3,190	685.00- 880.00	775.98
AUS Rack, FR, Cap-off, 28 oz/up	4	2,970	747.00- 835.00	758.53
AUS Shoulder, Square-cut	10	47,627	132.00- 189.00	147.54
AUS Shoulder, Square-cut, bnls	5	7,172	250.00- 280.00	257.55
AUS Foreshank, LP	9	16,554	175.00- 317.00	203.36
AUS Leg, Long	8	11,418	206.00- 275.00	226.15
AUS Leg, bnls	31	123,867	269.00- 345.00	282.24
NZ Rack, 8-Rib, Standard	11	18,824	314.00- 357.00	332.28
NZ Rack, FR, Cap-off, 12 oz/dn	17	5,226	607.00- 710.00	664.09
NZ Rack, FR, Cap-off, 12-16 oz	76	60,017	567.00- 725.00	619.95
NZ Rack, FR, Cap-off, 20 oz/up	17	10,006	592.00- 698.00	643.36
NZ Leg, semi bnls	4	5,276	313.00- 350.00	317.18

Regional Weekly Summaries

Mountain Areas and Western United States Sheep

Receipts: 17,490 Last Week: 16,315 Last Year: 5095

Compared to last week: Feeder lambs steady to 2.00 lower. Demand light and trade activity moderate. All of the supply consisted of feeder lambs. Feeder lamb sales FOB with overnight stand or equivalent 3-4 percent shrink unless otherwise noted. Prices quoted per cwt. Current delivery unless otherwise noted.

South Central Direct Sheep

Feeder Lambs: Compared to last week feeder lambs steady. Trading and demand moderate.
Slaughter Lambs: TX: None. **Slaughter Ewes:** TX: None. **Replacement Ewes:** TX: None.
Slaughter Meat Goats: Kids: TX: None.

Eastern Cornebelt Direct Sheep

Total sheep and lamb sales: 810 Last week: 1253 Year ago: 957

Compared to last week, slaughter lambs, ewes, and goats traded steady. Trade was moderate with light to moderate demand. Offerings were moderate. Slaughter lamb offerings were still being supported by fair lambs entering the market. This week's supply was made up of 67% lambs and 33% slaughter ewes; with an additional 1437 head of goats.

Sioux Falls Weekly Sheep Summary

Compared to last week, slaughter lambs sold steady to weak. Slaughter ewes steady to weak. Too few feeder lambs offered last week for price comparison. Demand moderate. Sheep supplies near 35 percent slaughter lambs, 30 percent slaughter ewes, 20 percent feeder lambs and the balance bucks. Receipts this week 740 including 106 goats compared with 870 including 68 goats last week and 1403 including 113 goats a year ago.

Weekly Lamb Pelts Price Report - FOB Major Production Points

Per Piece Price

Pelt activity this week compared to last week: Packer sorted green salted pelts steady. Movement nearly inactive with a light demand on raw material due to the lack of activity on finished product at the retail market level.

PELT TYPES: SHORN	PACKER, SEED Price Range	FREE, MOSTLY GOOD UNSHORN	DENSITY WOOL Price Range
Fall Clips	4.00 - 9.00	Wools	3.00 - 6.00
No. 1	3.00 - 7.00	Pickling skins	2.00 - 2.50
No. 2	1.00 - 3.00	Springers:	5.00 - 7.00
No. 3	1.00 - 1.50	Western Slope,	
No. 4	1.00	California,	
		Idaho,	
Imperial's		Kansas,	
Fall Clips		Midwest,	5.00 - 7.00
No. 1		Native(Gray)	
No. 2			

Livestock Mandatory Reporting on Negotiated, Formula and Contract trades Saturday through Friday showed 19,190 pelts consisting of 77.20% woolled, 21.07% Fall Shorn No. 1, 1.73% No. 2, and 0.00% No. 3&4.

National Wool Review

Domestic wool trading on a clean basis was very slow this week. With no confirmed sales this week. Demand moderate. All prices reported on a weighted average price.

Weighted Average Clean Wool Prices for this week Prices reflect FOB warehouse sales for Original Bag, Bellies Out wool (some graded), in square packs, 76 mm or longer. No allowance made for coring, freight or handling fees at the warehouse level to reflect net grower prices.

**** Indicates new Price this week ****

Micron	U.S. GRADE	Fleece States	Territory States	Texas/ N.M
18	80'S	N.A	None	None
19	80'S	N.A.	None	None
20	70'S	None	None	None
21	64-70'S	None	2.33	None
22	64'S	None	2.23	None
23	62'S	None	2.12	None
24	60-62'S	None	1.88	None
25	58'S	None	1.63	None
26	56-58'S	None	None	None
27	56'S	None	None	N.A.
28	54'S	None	None	N.A.
29	50-54'S	None	None	N.A.
30-34	46-50'S	None	None	N.A.

(N.A. - microns normally not available in this area) Wool less than 75 mm discounted .10-.20 clean. Classed and skirted wools usually .10-.20 premium to OB prices.

Greasy wool trading was very slow this week. With no confirmed sales this week. Demand moderate. Prices are reported on a weighted average.

FSA Wool LDP payment unchanged at .29 per pound net grower on a greasy basis. This week's Mohair LDP up .46 at .71 per pound.

Domestic Wool Tags - delivered to buyer, greasy basis:

1 .25-30 # 2 .15-.20 # 3 .05-.10

Mohair trading activity was at a standstill this week. With no confirmed sales this week.

South Africa held the first mohair sale of the winter season. Values for kid goats increased, young goats increased, fine adult goats increased, and strong adults increased. A total of 161,881 lbs were offered, with a clearance of 97.6 percent. The Exchange rate of the Rand to U.S. dollar was at 8.05. The next sale will be held on September 1, 2009.

In Australia this week the Eastern Market Indicator was up 20 at 823 cents per Kg clean from last week. A total of 33,208 bales were offered with sales of 94.9 percent. Next week's will offerings totaling 40,993 bales. The current exchange rate is .8308 percent of the U.S. dollar.

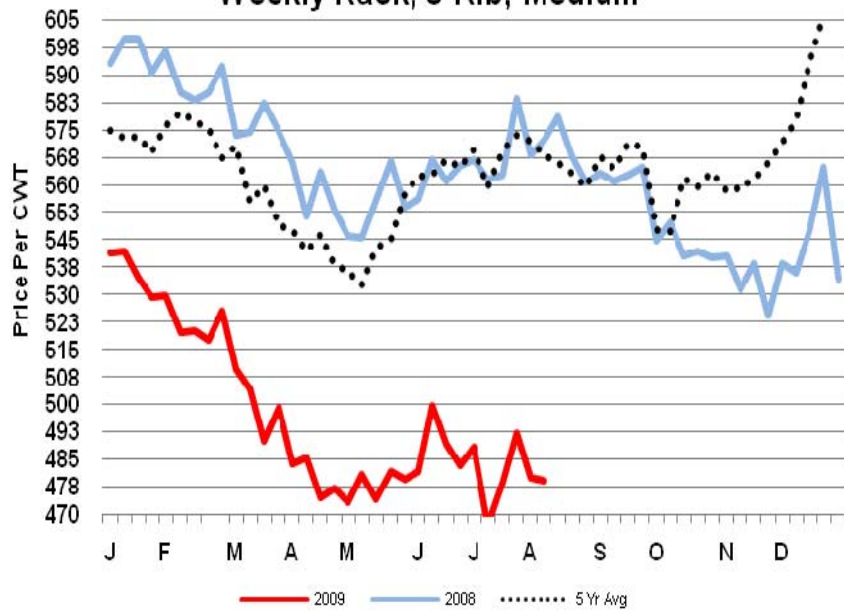
Australian Wool Sales - Prices Delivered Charleston S.C. All Schlumberger dry basis.

Micron	US Grade	Clean Del Price in U.S. Dollars	Change from 4 weeks ago
18	80's	4.43	+ .08
19	80's	3.94	+ .07
20	70's	3.40	+ .06
21	64-70's	3.29	+ .02
22	64's	3.23	+ .03
23	62's	3.17	+ .03
24	60-62's	3.08	+ .04
25	58's	2.65	- .01
26	56-58's	2.54	+ .04
28	54's	2.01	-----
30	50's	1.77	- .01
Merino Clippings		2.14	+ .05

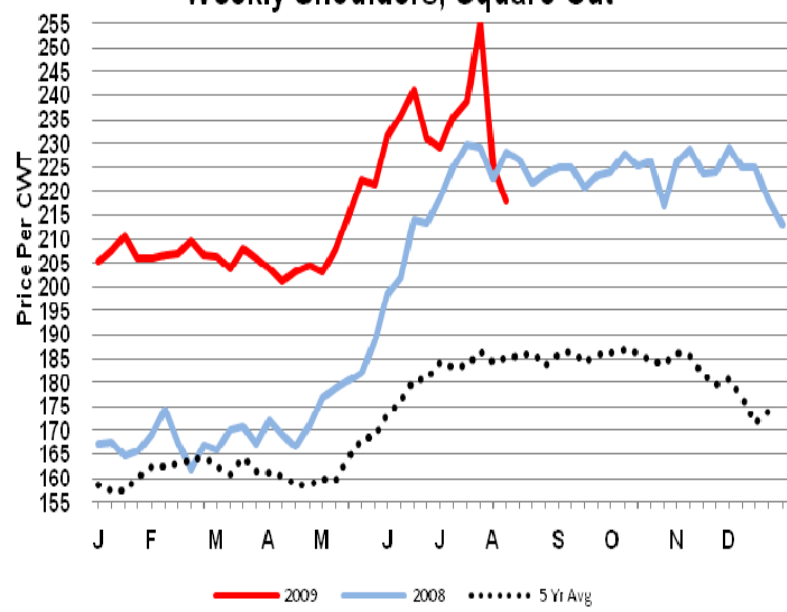
EMI closed at 823 cents per kg clean

Australian Exchange rate to U.S. \$ is .8308

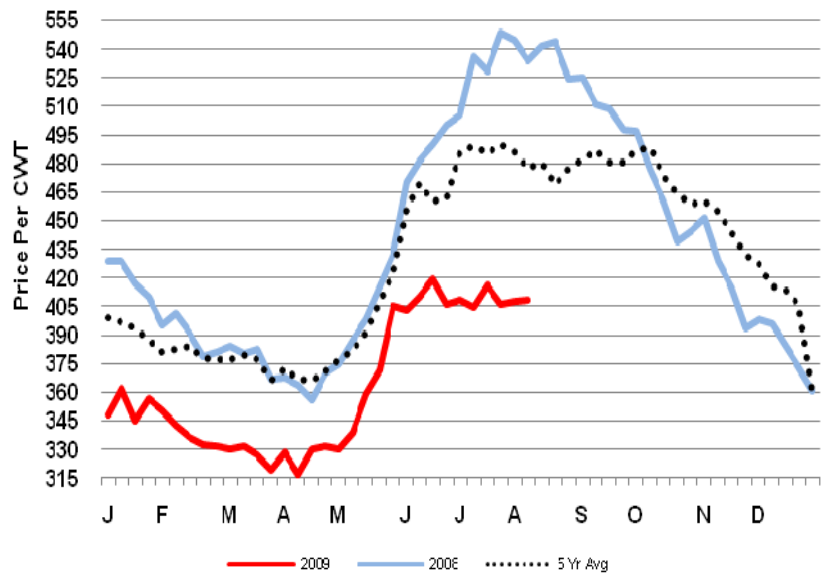
Weekly Rack, 8-Rib, Medium



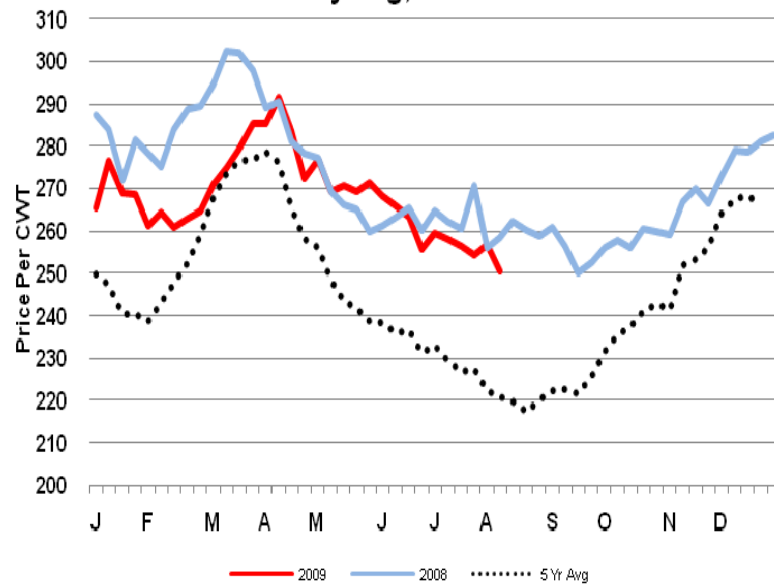
Weekly Shoulders, Square-Cut



Weekly Loins, Trimmed 4X4



Weekly Leg, Trotter-Off



Market News Sources



For additional information, contact these Livestock and Grain Market News locations

Des Moines, IA
Darold Mapes
515-284-4460

Greeley, CO
Jodie Pitcock
970-353-9750

New Holland, PA
Levi Geyer
717-354-2391

San Angelo, TX
Rebecca Sauder
915-653-1778

Sioux Falls, SD
Justin Lumpkin
605-338-4061

Springfield, IL
Kim Harmon
217-782-4925