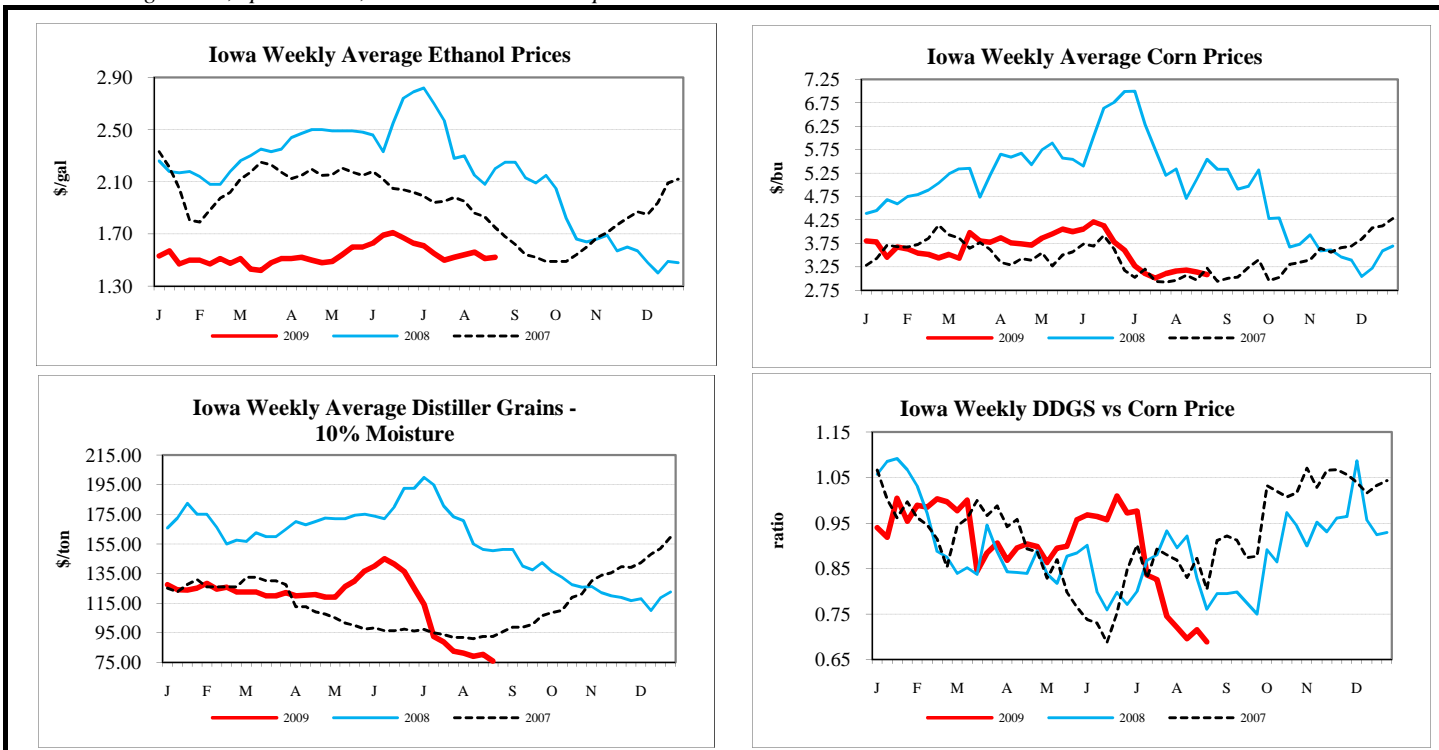


Prices are negotiated, spot market, and FOB the ethanol plant.



	<u>This Week</u>	<u>Last Week</u>	<u>Year Ago</u>	<u>Internet Report Link</u>
<b>Ethanol (\$/gal)</b>				
Iowa	1.48-1.56	1.45-1.56	2.10-2.30	<a href="#">Iowa Ethanol</a>
Minnesota	1.49-1.57	1.45-1.56	---	<a href="#">Minnesota Ethanol</a>
Nebraska	1.48-1.55	1.45-1.58	2.07-2.30	<a href="#">Nebraska Ethanol</a>
South Dakota	1.42-1.60	1.43-1.70	2.12-2.25	<a href="#">South Dakota Ethanol</a>
Illinois	1.58-1.62	1.54-1.59	2.15-2.40	<a href="#">Eastern Cornbelt Ethanol</a>
Wisconsin	1.52-1.59	1.48-1.58	---	<a href="#">Wisconsin Ethanol</a>
<b>Distiller Grains (\$/ton)</b>				
10% Moisture				
Iowa	68.00-80.00	75.00-86.00	145.00-155.00	<a href="#">Iowa Ethanol</a>
Minnesota	72.00-80.00	75.00-80.00	---	<a href="#">Minnesota Ethanol</a>
Nebraska	77.00-85.00	80.00-86.00	170.00-180.00	<a href="#">Nebraska Ethanol</a>
South Dakota	69.00-85.00	70.00-90.00	140.00-152.00	<a href="#">South Dakota Ethanol</a>
Eastern Cornbelt	90.00-100.00	90.00-100.00	135.00-150.00	<a href="#">Eastern Cornbelt Ethanol</a>
Wisconsin	75.00-90.00	78.00-100.00	---	<a href="#">Wisconsin Ethanol</a>
65% Moisture				
Iowa	20.00-34.00	20.00-34.00	40.00-76.50	<a href="#">Iowa Ethanol</a>
Minnesota	25.00-30.00	25.00-30.00	---	<a href="#">Minnesota Ethanol</a>
Nebraska	27.50-40.00	31.00-37.00	52.00-65.00	<a href="#">Nebraska Ethanol</a>
South Dakota	28.00-30.00	27.50-32.50	41.00-52.00	<a href="#">South Dakota Ethanol</a>
Eastern Cornbelt	29.00-40.00	29.00-40.00	52.00-60.00	<a href="#">Eastern Cornbelt Ethanol</a>
Wisconsin	25.00-29.00	25.00-29.00	---	<a href="#">Wisconsin Ethanol</a>
<b>Corn (\$/bu)</b>				
Iowa	2.8350-3.3350	2.9650-3.3350	5.3175-5.7175	<a href="#">Iowa Ethanol</a>
Minnesota	2.8950-3.0250	2.9350-3.1250	---	<a href="#">Minnesota Ethanol</a>
Nebraska	2.9050-3.0450	2.9450-3.1150	5.6475-5.8775	<a href="#">Nebraska Ethanol</a>
South Dakota	2.7200-2.9600	2.7800-3.0100	5.5800-5.6800	<a href="#">South Dakota Ethanol</a>
Eastern Cornbelt	3.2750-3.3750	3.3950-3.5050	5.7275-5.7975	<a href="#">Eastern Cornbelt Ethanol</a>
Wisconsin	3.1550-3.3350	3.2150-3.3950	---	<a href="#">Wisconsin Ethanol</a>
<b>Nearby Futures</b>				
CME Group				
Corn (\$/bu)	3.1850	3.2450	5.9775	<a href="#">CME Group</a>
Ethanol (\$/gal)	1.5820	1.5650	2.3980	<a href="#">CME Group</a>
NYMEX				
RBOB Gasoline (\$/gal)	1.9822	2.0192	3.0452	<a href="#">New York Mercantile Exchange</a>
Natural Gas (mmBtu)	2.9450	3.3360	8.2520	<a href="#">New York Mercantile Exchange</a>