

National Weekly Cow and Boneless Beef Summary

Des Moines, Iowa

Friday, August 21, 2009

USDA Livestock & Grain Market News

[BONELESS PROCESSING BEEF & BEEF TRIMMINGS - LM\\_XB460](#)

|              | National |           | Central US |           |
|--------------|----------|-----------|------------|-----------|
|              | Loads    | Wt Avg \$ | Loads      | Wt Avg \$ |
| Fresh 92-94% | 16.3     | 139.86    | 8.0        | 139.19    |
| Fresh 90%    | 90.8     | 130.11    | 82.2       | 129.84    |
| Fresh 85%    | 33.4     | 119.96    | 29.8       | 119.58    |
| Fresh 81%    |          | 114.13    | 5.6        | 114.13    |
| Fresh 75%    | 6.1      | 110.60    | 5.2        | 110.86    |
| Fresh 73%    | 5.0      | 105.67    | 5.0        | 105.67    |
| Fresh 65%    | 36.4     | 87.47     | 28.5       | 87.32     |
| Fresh 50%    | 142.6    | 67.74     |            |           |

|                                 | Loads | Wt Avg \$ | Change |
|---------------------------------|-------|-----------|--------|
| 100% LEAN - LM_XB461            |       |           |        |
| Cutter Cow Carcass Cutout Value |       | 104.99    | (1.55) |
| Inside Rounds - Combo           | 5.2   | 181.28    | (0.42) |
| Inside Rounds - Boxed           | 3.7   | 191.67    | (1.52) |
| Outside Rounds                  | 1.3   | 169.55    | 6.35   |
| Eye of Rounds                   | 1.2   | 176.81    | 3.12   |
| Flats and Eyes - Combo          | 11.9  | 162.77    | (0.69) |
| Striploins                      | 6.0   | 201.62    | (3.13) |
| S.P.B. - Combo                  | 16.9  | 162.59    | (0.23) |

|                | Str/Hfr |           | Str/Hfr/Cow |           |
|----------------|---------|-----------|-------------|-----------|
|                | Loads   | Wt Avg \$ | Loads       | Wt Avg \$ |
| Fresh 73%      | 82.3    | 107.72    | 2.3         | 122.92    |
| Fresh 75%      | 5.1     | 114.97    |             |           |
| Fresh 81%      | 51.2    | 124.37    | 21.4        | 140.00    |
| Fresh 85%      |         |           | 1.6         | 159.19    |
| Fresh 90%      | 0.3     | 160.95    | 2.8         | 178.10    |
| Fresh 93%      | 15.7    | 171.36    |             |           |
| Ground Chuck   | 68.5    | 127.84    | 14.6        | 142.18    |
| Ground Round   | 12.1    | 142.58    | 4.8         | 161.16    |
| Ground Sirloin | 1.8     | 206.58    |             |           |

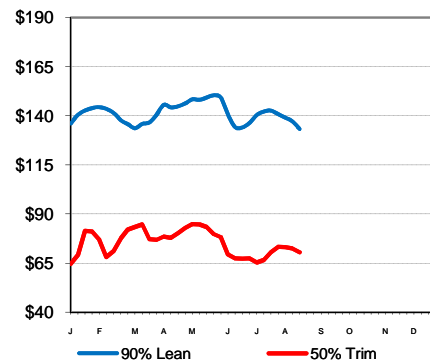
| <a href="#">ESTIMATED CATTLE SLAUGHTER - SJ_LS710</a> |         | <a href="#">Weekly Canadian Imports</a>       |        |
|---|---------|---|--------|
| Week to Date (est)                                    | 653,000 | Week ending                                   | 8/8/09 |
| Same Period Last Week (est)                           | 643,000 | Sltr Cows                                     | 2,139  |
| Same Period Last Year (act)                           | 674,000 | Sltr Bulls                                    | 439    |
|   |         | YTD Cows                                      | 91,066 |
|   |         | YTD Bulls                                     | 19,782 |
| Cow/Bull Total through Thursday                       | 99,000  | <a href="#">Canada Live Cow Prices - \$US</a> |        |
| Previous Wk Total Cow & Bull Est                      | 129,000 | Ontario                                       | 44.96  |
|   |         | Alberta                                       | 40.69  |

| <a href="#">BEEF PRODUCTION - SJ_LS711</a> | 8/8/2009  | 8/1/2009  | 8/9/2008  |
|--|-----------|-----------|-----------|
| Cow & Bull Slaughter                       | 122,457   | 122,811   | 132,292   |
| Year to Date Totals                        | 4,031,174 | 3,908,717 | 4,022,794 |

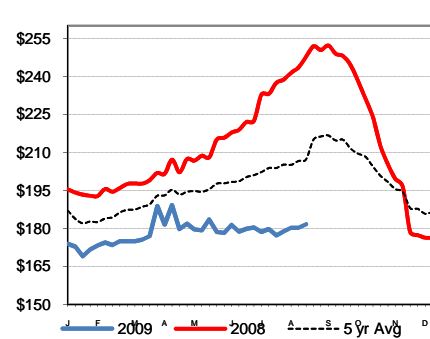
| <a href="#">COW BY-PRODUCT DROP - NW_LS444</a> | cwt live    | 7.50  |
|--|-------------|-------|
|  | cwt dressed | 15.96 |

| Live Auction Prices                        | Lean 85-90% | Bng. 80-85% | Brk. 75-80% | Bull 92% |
|--|-------------|-------------|-------------|----------|
| <a href="#">Washington - ML_LS795</a>      | 34.50       | 40.50       | 41.00       | 52.50    |
| <a href="#">Montana - BL_LS754</a>         | 37.25       | 44.88       | 46.88       | 58.12    |
| <a href="#">Colorado-Ft.Collins, CO</a>    | 43.50       | 48.50       | 49.38       | 62.00    |
| <a href="#">South Dakota - SF_LS111</a>    | 44.25       | 46.75       | 49.00       | 57.00    |
| <a href="#">Iowa - NW_LS785</a>            | 37.25       | 44.75       | 51.25       | 57.25    |
| <a href="#">Missouri -Joplin- JC_LS174</a> | 37.00       | 45.00       | 45.50       | 60.50    |
| <a href="#">OK - Ok City- KO_LS155</a>     | 44.50       | 47.75       | 48.38       | 58.25    |
| <a href="#">TX -San Angelo-SA_LS150</a>    | 42.50       | 47.25       | 45.25       | 58.25    |
| <a href="#">New Mexico-CV_LS150</a>        | 40.02       | 44.91       | -           | 57.00    |
| <a href="#">Alabama - MG_LS145</a>         | 39.00       | 45.00       | 44.88       | 56.88    |
| <a href="#">Georgia - TV_LS145</a>         | 43.92       | 47.75       | 46.00       | 59.38    |
| <a href="#">Louisiana - BG_LS145</a>       | 38.50       | 44.50       | 45.25       | 56.75    |
| <a href="#">Kentucky - SV_LS145</a>        | 40.75       | 44.94       | 46.38       | 54.44    |
| <a href="#">PA-New Holland-LN_LS145</a>    | 42.75       | 47.25       | 49.75       | 59.59    |

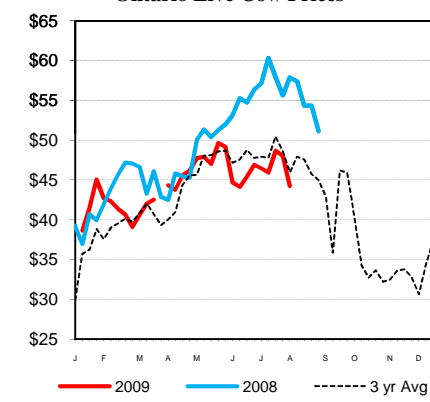
2009 Weekly - 90% Lean vs 50% Lean



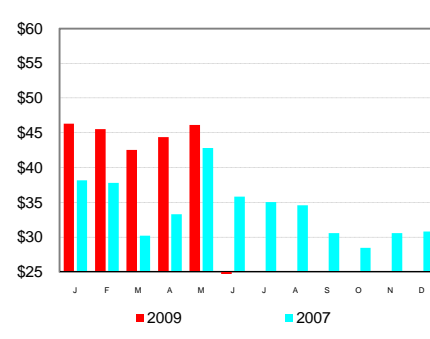
100% Lean - Inside Rounds



Ontario Live Cow Prices



Monthly Spread Between 90% Bnls and Lean 90% Live Price



USDA Livestock & Grain Market News  
 Des Moines, Iowa  
 Phone: 515-284-4460  
 Email: [desm.lgmn@usda.gov](mailto:desm.lgmn@usda.gov)  
[www.ams.usda.gov/LMarketNews](http://www.ams.usda.gov/LMarketNews)