

**AUCTION SUMMARY**

<a href="#">SF LS759</a>		4,231 hd		Tuesday	
<b>PHILIP LIVESTOCK AUCTION</b>					
Philip, SD					
Feeder Steers	600-700 lbs	113.00	Feeder Heifers	600-700 lbs	100.00
Medium &	700-800 lbs	101.00-106.50	Medium &	700-800 lbs	93.25-101.75
Large #1	800-900 lbs	95.00-102.00	Large #1	800-900 lbs	88.75-95.00
	900-1000 lbs	90.50-96.90		900-1000 lbs	88.50-90.25
	1000-1100 lbs	90.00-90.50		1000-1100 lbs	

<a href="#">JC LS763</a>		3,600 hd		Tuesday	
<b>OZARKS REGIONAL STOCKYARDS</b>					
West Plains, MO					
Feeder Steers	400-500 lbs	108.00-115.00	Feeder Heifers	400-500 lbs	95.00-104.00
Medium &	500-600 lbs	102.00-112.00	Medium &	500-600 lbs	94.00-103.00
Large #1	600-700 lbs	97.00-107.00	Large #1	600-700 lbs	88.00-96.50
	700-800 lbs	92.00-97.50		700-800 lbs	
	800-900 lbs	90.00-92.00		800-900 lbs	87.00

<a href="#">KO LS752</a>		1,915 hd		Tuesday	
<b>UNION LIVESTOCK MARKET</b>					
McAlester, OK					
Feeder Steers	300-400 lbs	120.50-131.00	Feeder Heifers	300-400 lbs	103.00-109.50
Medium &	400-500 lbs	107.00-122.00	Medium &	400-500 lbs	95.00-108.00
Large #1	500-600 lbs	100.00-108.00	Large #1	500-600 lbs	90.50-103.50
	600-700 lbs	95.00-102.50		600-700 lbs	87.50-95.00
	700-800 lbs	90.25-95.00		700-800 lbs	88.00-89.25

[Live Cattle Settlements](#) [Feeder Cattle Settlements](#) Tuesday

**CHICAGO MERCANTILE EXCHANGE LIVESTOCK FUTURES SETTLEMENT**

Live Cattle		Change	Feeder Cattle		Change
Aug	84.45	0.27	Aug	99.95	(0.15)
Oct	88.75	(0.05)	Sep	99.97	(0.35)
Dec	88.47	0.25	Oct	100.12	(0.35)

[Corn Settlements](#) [Soybean Settlements](#) Tuesday

**CHICAGO BOARD OF TRADE GRAIN FUTURES SETTLEMENT**

Corn		Change	Soybeans		Change
Sep	3.21 1/2	(8)	Sep	10.91	11
Dec	3.26 3/4	(8 3/4)	Nov	9.99	(8 1/2)
Mar	3.40 1/2	(8 3/4)	Jan	10.01 1/4	(8 1/4)

[SJ GR710](#) [Wheat](#) Tuesday

**KANSAS CITY BOARD OF TRADE WHEAT FUTURES SETTLEMENT**

Wheat		Change
Sep	5.04 3/4	1 1/2
Dec	5.20 1/2	1 1/2
Mar	5.36 1/4	3/4

[LM CT100](#) Tuesday

**5 AREA WKLY ACCUMULATED WTD AVG SLAUGHTER CATTLE PRICE**

	Head Count	Avg Weight	Avg Price
Live Steer	863	1,489	82.43
Live Heifer	86	1,300	82.00
Dressed Steer	18	806	130.00
Dressed Heifer			

[LM XB403](#) Tuesday

**DAILY ESTIMATED BOXED BEEF CUTOUT VALUES**

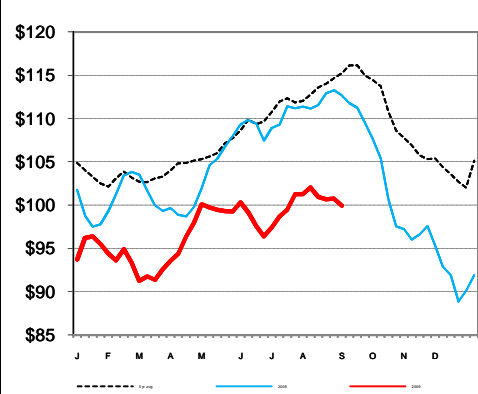
Choice	Select	Choice Cuts	76	Loads
600-900#	600-900#	Select Cuts	66	Loads
143.73	136.99	Trimming	22	Loads
0.70	1.13	Grinds	42	Loads

[SJ LS710](#) [KO LS151](#)

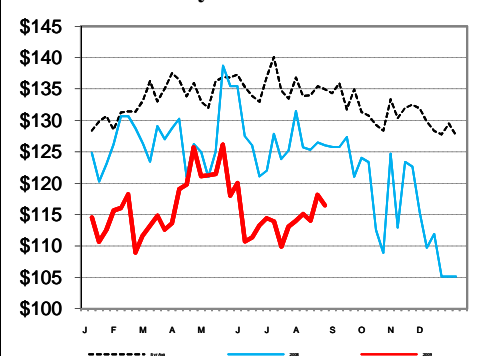
**ESTD DAILY CATTLE SLAUGHTER** **SLAUGHTER COW MARKET**

Tue (est)	128,000	<b>Oklahoma National Stockyards</b>		
Week Ago (est)	128,000	Tuesday	<u>Pct Lean</u>	<u>Price</u>
Year Ago (act)	128,000	<b>Breaking</b>	75-80	46.00-49.50
Wk to date (est)	254,000	<b>Boning</b>	80-85	46.00-49.50
Last Week (est)	250,000	<b>Lean</b>	85-90	44.50-48.00
Last Year (act)	255,000	<b>Monday</b>		
Previous Day Estimated:	Steer and Heifer	101,000		
	Cow and Bull	25,000		

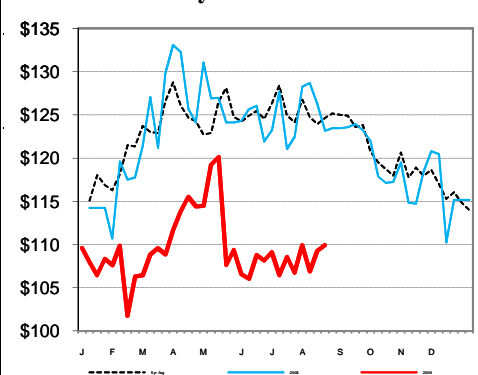
**CME Feeder Cattle Index**



**Oklahoma City 400-500 lb Steer Price**



**Oklahoma City 500-600 lb Steer Price**



**Oklahoma City 700-800 lb Steer Price**

