

LM XB403

DAILY ESTIMATED CUTOUT VALUES

	Choice 600-900#	Select 600-900#	Choice/Select Spread
Cutout Values	143.73	136.99	6.74
Change from Prior Day	0.70	1.13	
Primal Rib	219.03	194.51	
Primal Chuck	112.16	112.97	Load Count:
Primal Round	124.06	122.53	Total 206
Primal Loin	204.79	186.21	Choice 76
Primal Brisket	97.71	97.85	Select 66
Primal Short Plate	93.45	95.51	Trimmings 22
Primal Flank	89.94	87.66	Grinds 42

Fresh 50% Trimmings: 20 Loads @ 67.02

NW LS441

USDA BY-PRODUCT DROP VALUE (STEER)

Value: 9.42 Change: unch

LM CT100

5 AREA WEEKLY ACCUMULATED WEIGHTED AVG CATTLE PRICE

	Head Count	Avg Weight	Avg Price
Live Steer	863	1,489	82.43
Live Heifer	86	1,300	82.00
Dressed Steer	18	806	130.00
Dressed Heifer			

SJ LS710

ESTIMATED DAILY CATTLE SLAUGHTER

Today (est)	128,000
Week Ago (est)	128,000
Year Ago (act)	128,000
Week to Date (est)	254,000
Same Period Last Week (est)	250,000
Same Period Last Year (act)	255,000
Previous Day Estimated	Steer and Heifer 101,000 Cow and Bull 25,000

SJ LS712

	8/21/2009 (Estimate)	Previous week (Estimate)	Last Year (Actual)
BEEF PRODUCTION			
Slaughter	653,000	643,000	674,000
Live Weights	1288	1285	1291
Dressed Weights	785	783	785
Beef Production (millions of pounds)	511.3	501.8	527.8

LM XB410

USDA BEEF CARCASS PRICE EQUIVALENT INDEX VALUE

	Choice 600-900#	Select 600-900#	Dressing percent:	
			Steer	Heifer
Values	128.07	121.39	63.89	63.78
Change	0.35	0.56		

LM XB405

USDA NATIONAL CUTTER COW CARCASS CUTOUT

105.83 Change 0.57 90% lean: 131.39

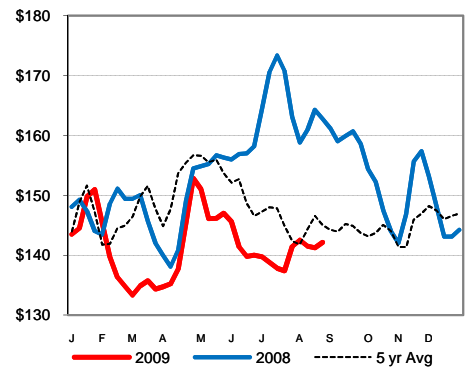
CME LIVE CATTLE

CME LIVE CATTLE	High	Low	Close	Change
August	85.60	85.20	85.45	0.27
October	89.50	88.57	88.75	(0.05)
December	88.77	88.07	88.47	0.25

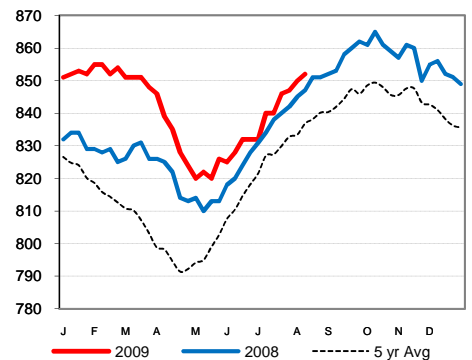
CME FEEDER CATTLE

CME FEEDER CATTLE	High	Low	Close	Change
August	100.22	99.90	99.95	(0.15)
September	100.57	99.90	99.97	(0.35)
October	100.70	99.90	100.12	(0.32)

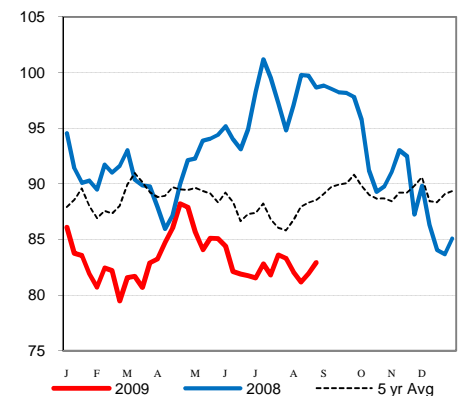
Weekly Choice Cutout



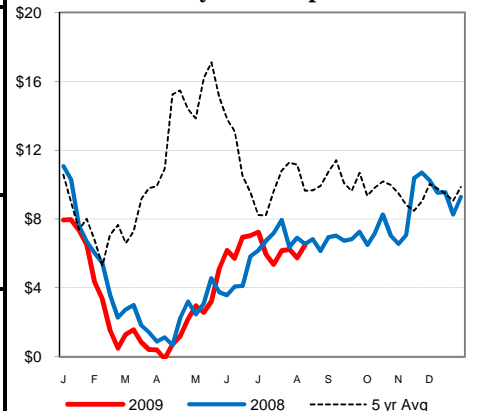
Weekly Steer Dressed Weights



5 Area Weekly Wtd Avg Steer Price



Weekly Ch/Se Spread



USDA Livestock & Grain Market News

Des Moines, Iowa

Phone: 515-284-4460

Email: desm.lgmn@usda.gov