

News

United States
Department
of Labor



Bureau of Labor Statistics

New York Office

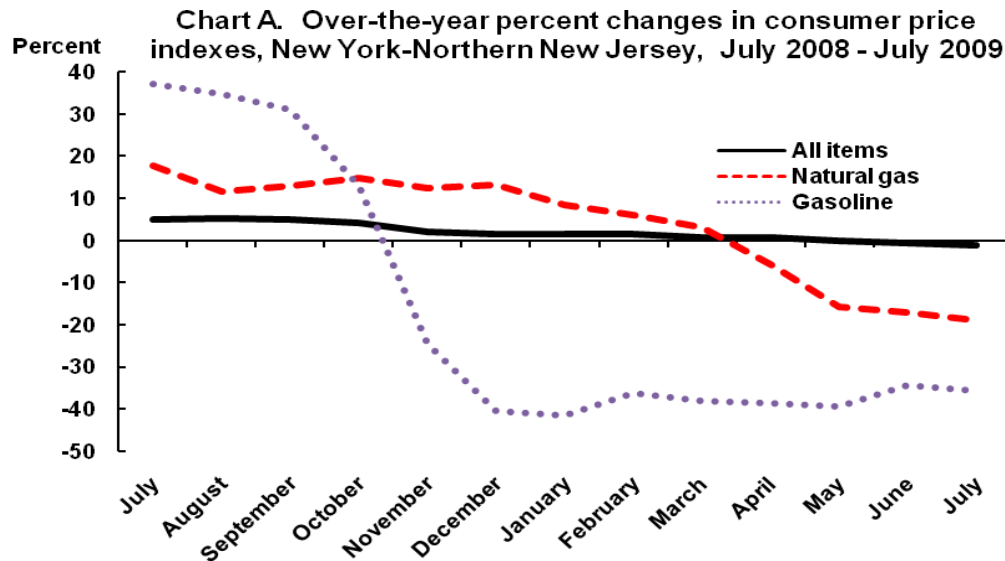
Internet Address: www.bls.gov/ro2/home.htm
Information: Martin Kohli, (646) 264-3620
Media Contact: Michael L. Dolfman, (212) 337-2500

Transmission of material in this release is
embargoed until after 8:30 A.M. (ET)
Friday, August 14, 2009

CONSUMER PRICE INDEX, NEW YORK-NORTHERN NEW JERSEY: JULY 2009 Area prices edge up 0.2 percent in July; down 1.1 percent over the year—largest drop since 1955

Retail prices in the greater New York area, as measured by the Consumer Price Index for All Urban Consumers (CPI-U), increased 0.2 percent in July, after rising 0.5 percent in June. Michael L. Dolfman, Regional Commissioner of the U. S. Department of Labor's Bureau of Labor Statistics, attributed the July rise to higher prices for housing and transportation. An increase in education and communication also contributed to the rise. These increases were partially offset by lower prices for food and apparel. For the 12 months ended in July 2009, the CPI-U decreased 1.1 percent, primarily due to falling energy prices. (See chart A.) The over-the-year decline for all items was the largest since 1955. The index for all items less food and energy rose 1.6 percent.

The housing index advanced 0.5 percent in July, the largest increase recorded since last July. The shelter component turned up 0.4 percent, after inching down 0.1 percent in both May and June. A seasonal increase in out-of-town lodging charges contributed to the upturn. Owners' equivalent rent rose 0.3 percent, and residential rent was unchanged for the second consecutive month. Among fuels and utilities, electricity charges rose 1.2 percent, and natural gas prices turned up 2.8 percent, following six successive declines. Over the year, natural gas prices fell 19 percent, the largest decline recorded in 37 years. In addition to that drop, a large decline in fuel oil charges also contributed to a 0.3-percent decrease in the housing index, the first 12-month decline since its 1977 series start.



Round-the-clock recorded messages for the Consumer Price Index and a variety of other Bureau of Labor Statistics data are available by dialing the New York Information Office's main telephone number: (646) 264-3600. For recorded messages, press '2'.

**New York-Northern New Jersey CPI monthly and annual percent changes
(not seasonally adjusted)**

Month	2004		2005		2006		2007		2008		2009	
	Monthly	Annual	Monthly	Annual	Monthly	Annual	Monthly	Annual	Monthly	Annual	Monthly	Annual
January	0.3	2.7	0.6	4.1	0.8	3.7	0.2	2.7	0.2	3.7	0.2	1.5
February	0.6	2.5	0.4	3.9	0.2	3.6	0.6	3.1	0.5	3.6	0.5	1.6
March	1.1	3.2	1.7	4.4	0.8	2.7	0.7	2.9	0.9	3.8	0.2	0.8
April	0.3	3.7	0.0	4.2	0.9	3.6	0.5	2.5	0.3	3.6	0.2	0.8
May	0.2	3.9	-0.5	3.4	0.6	4.8	0.6	2.5	1.0	4.0	0.2	-0.1
June	0.8	4.6	-0.3	2.3	0.5	5.6	0.5	2.5	1.0	4.5	0.5	-0.6
July	-0.2	3.9	0.9	3.4	0.2	5.0	0.2	2.5	0.7	5.1	0.2	-1.1
August	0.1	3.3	0.8	4.1	0.4	4.7	-0.1	1.9	0.1	5.4		
September	0.1	3.2	0.8	4.8	-0.5	3.3	0.0	2.4	-0.2	5.2		
October	0.7	3.7	0.4	4.5	-0.5	2.4	0.1	3.1	-0.7	4.3		
November	0.0	3.9	-0.6	3.9	-0.4	2.6	0.4	3.9	-1.6	2.2		
December	-0.2	3.8	-0.5	3.6	0.2	3.3	0.0	3.7	-0.6	1.6		

Transportation prices rose 0.6 percent over the month, with higher fares for intracity transportation (including buses and subways) and for airline flights. Car and truck rental charges also increased. In contrast, gasoline prices declined 0.7 percent, after five consecutive monthly increases. For the year ended in July, transportation prices were down 10.8 percent; gasoline prices were down 35.7 percent.

The education and communication index rose 0.6 percent, after edging down 0.2 percent in June. Local and long distance telephone charges, as well as delivery services, contributed to the increase.

The apparel index, often down in July with seasonal sales, fell 3.6 percent. Price reductions were reported for women's apparel, including suits and separates, outerwear, and dresses, along with boys' and girls' apparel. Since July 2008, however, apparel prices rose 0.4 percent.

Food and beverage prices fell 0.4 percent. The food-at-home component dropped for the sixth consecutive month (0.8 percent), and away-from-home food inched down 0.1 percent. Groceries with lower July prices included carbonated drinks, pork chops, and other pork, including roasts and picnics. On the other hand, alcoholic beverages edged up 0.2 percent over the month. Over the year, food and beverage prices were up 1.6 percent.

Among other expenditure categories, the recreation index edged up 0.2 percent, with higher-priced items including audio discs, tapes, and other media. Medical care and other goods and services were little changed over the month.

With the New York-Northern New Jersey CPI-U at 237.600 in July (1982-84=100), \$23.76 was required to purchase what \$10 could in the 1982-84 base period. The purchasing power of the dollar was 42.1 cents in 1982-84 dollars and 14.6 cents in 1967 dollars. In July, the Consumer Price Index for Urban Wage Earners and Clerical Workers (CPI-W) was 232.177, up 0.1 percent. The CPI-W fell 1.4 percent over the year. On a 1967 base, the July CPI-W was 661.065.

Data in this report are not seasonally adjusted. Accordingly, month-to-month changes may reflect the impact of seasonal influences. The New York-Northern New Jersey-Long Island, N.Y.-N.J.-Conn.-Pa. consolidated area comprises the five boroughs of New York City, Nassau, Suffolk, Westchester, Rockland, Putnam, Dutchess, and Orange Counties in New York State; Bergen, Essex, Hudson, Hunterdon, Mercer, Monmouth, Middlesex, Morris, Ocean, Passaic, Somerset, Sussex, Union and Warren Counties in New Jersey; Fairfield County and parts of Litchfield, New Haven and Middlesex Counties in Connecticut; and Pike County in Pennsylvania.

Consumer Price Index for All Urban Consumers (CPI-U): Indexes and percent changes for selected periods

New York-Northern N.J.-Long Island, NY-NJ-CT-PA (1982-84=100 unless otherwise noted)

Item and Group	Indexes			Percent change from—		
	May 2009	June 2009	July 2009	July 2008	May 2009	June 2009
Expenditure category						
All items	235.975	237.172	237.600	-1.1	0.7	0.2
All items (1967=100)	682.171	685.631	686.869	-	-	-
Food and beverages	227.592	227.801	226.852	1.6	-.3	-.4
Food	226.791	226.990	225.951	1.5	-.4	-.5
Food at home	225.640	225.508	223.722	.2	-.9	-.8
Food away from home	234.244	234.850	234.689	3.1	.2	-.1
Alcoholic beverages	235.253	235.594	236.022	2.5	.3	.2
Housing	256.573	257.537	258.912	-.3	.9	.5
Shelter	311.898	311.507	312.820	1.8	.3	.4
Rent of primary residence ¹	308.207	308.199	308.110	3.6	.0	.0
Owners' equivalent rent of primary residence ^{1 2}	320.917	320.054	320.895	2.4	.0	.3
Fuels and utilities	189.738	200.556	204.170	-13.7	7.6	1.8
Household energy	189.769	201.806	205.178	-15.4	8.1	1.7
Gas (piped) and electricity ¹	188.011	201.922	205.305	-8.3	9.2	1.7
Electricity ¹	178.303	198.293	200.612	-2.6	12.5	1.2
Utility (piped) gas service ¹	202.854	202.047	207.766	-19.0	2.4	2.8
Household furnishings and operations	126.125	124.874	124.909	-2.2	-1.0	.0
Apparel	114.625	110.931	106.906	.4	-6.7	-3.6
Transportation	187.017	193.317	194.565	-10.8	4.0	.6
Private transportation	177.567	183.941	184.060	-11.7	3.7	.1
Motor fuel	177.544	206.065	204.565	-35.9	15.2	-.7
Gasoline (all types)	177.011	205.660	204.143	-35.7	15.3	-.7
Gasoline, unleaded regular ³	178.411	207.992	205.783	-36.4	15.3	-1.1
Gasoline, unleaded midgrade ^{3 4}	178.114	205.809	206.605	-34.2	16.0	.4
Gasoline, unleaded premium ³	176.508	202.158	201.522	-34.6	14.2	-.3
Medical care	369.782	370.231	369.953	.1	.0	-.1
Recreation ⁵	117.106	117.369	117.590	1.9	.4	.2
Education and communication ⁵	133.760	133.559	134.311	3.5	.4	.6
Other goods and services	360.425	360.942	361.314	2.4	.2	.1
Commodity and service group						
All items	235.975	237.172	237.600	-1.1	.7	.2
Commodities	175.320	176.476	175.333	-5.8	.0	-.6
Commodities less food and beverages	141.418	142.976	141.795	-10.9	.3	-.8
Nondurables less food and beverages	168.614	172.919	170.812	-14.6	1.3	-1.2
Durables	105.470	103.864	103.773	-2.9	-1.6	-.1
Services	287.824	289.061	290.802	1.4	1.0	.6
Special aggregate indexes						
All items less medical care	229.875	231.087	231.535	-1.2	.7	.2
All items less shelter	206.023	207.930	207.978	-3.0	.9	.0
Commodities less food	145.129	146.661	145.520	-10.3	.3	-.8
Nondurables	199.560	201.968	200.383	-6.5	.4	-.8
Nondurables less food	172.734	176.844	174.864	-13.6	1.2	-1.1
Services less rent of shelter ²	270.897	274.306	276.673	.9	2.1	.9
Services less medical care services	280.371	281.658	283.420	1.5	1.1	.6
Energy	185.418	204.363	205.720	-25.3	10.9	.7
All items less energy	242.560	242.028	242.369	1.6	-.1	.1
All items less food and energy	246.949	246.276	246.879	1.6	.0	.2

¹ This index series was calculated using a Laspeyres estimator. All other item stratum index series were calculated using a geometric means estimator.

² Index is on a December 1982=100 base.

³ Special index based on a substantially smaller sample.

⁴ Indexes on a December 1993=100 base.

⁵ Indexes on a December 1997=100 base.

- Data not available.

NOTE: Index applies to a month as a whole, not to any specific date.