



East/West Grand Terre Restoration (BA-30)

Project Status

Approved Date: 2000 **Project Area:** 1,824 acres

Approved Funds: \$2.3 M **Total Est. Cost:** \$18.2 M

Net Benefit After 20 Years: 472 acres

Status: Engineering and Design

Project Type: Barrier Island Restoration

Location

This project is located at the mouth of Barataria Bay in Jefferson Parish, Louisiana. The islands are bordered by Barataria Bay to the north, Barataria Pass and Grand Isle to the west, Quatre Bayou Pass to the east, and the Gulf of Mexico to the south.

Problems

Over time, the high frequency of tropical storms, high bay and gulf shoreline erosion rates, the subsidence of back barrier marshes, and a lack of sand in an already sediment-deprived system have caused the breakup of Grand Terre into two islands. In addition, these processes have resulted in the loss of natural terrestrial and aquatic barrier island habitats.

Restoration Strategy

The barrier shoreline of western Grand Terre Island will be restored by constructing 40 acres of dune from the Lyle S. St. Amant Marine Biological Laboratory to the U.S. Army Corps of Engineers' disposal area. Dune platforms will be planted with marshhay cordgrass (*Spartina patens*) and bitter panicum (*Panicum amarum*) and the marsh platform will be planted with smooth cordgrass (*Spartina alterniflora*).

Progress to Date

Surveying, sand search, and preliminary design are in progress.

This project is listed on Priority Project List 9.



Aerial view of the Lyle S. St. Amant Marine Biological Laboratory on west Grand Terre Island.



Barrier island habitat such as this will be restored with this project.

For more project information, please contact:




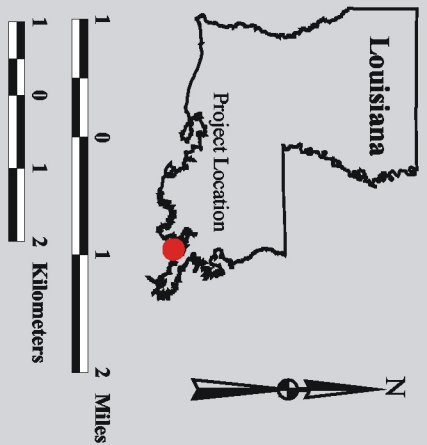
Federal Sponsor:
National Marine Fisheries Service
Baton Rouge, LA
(225) 389-0508



Local Sponsor:
Louisiana Department of Natural Resources
Baton Rouge, LA
(225) 342-7308

East/West Grand Terre Restoration Project (BA-30)

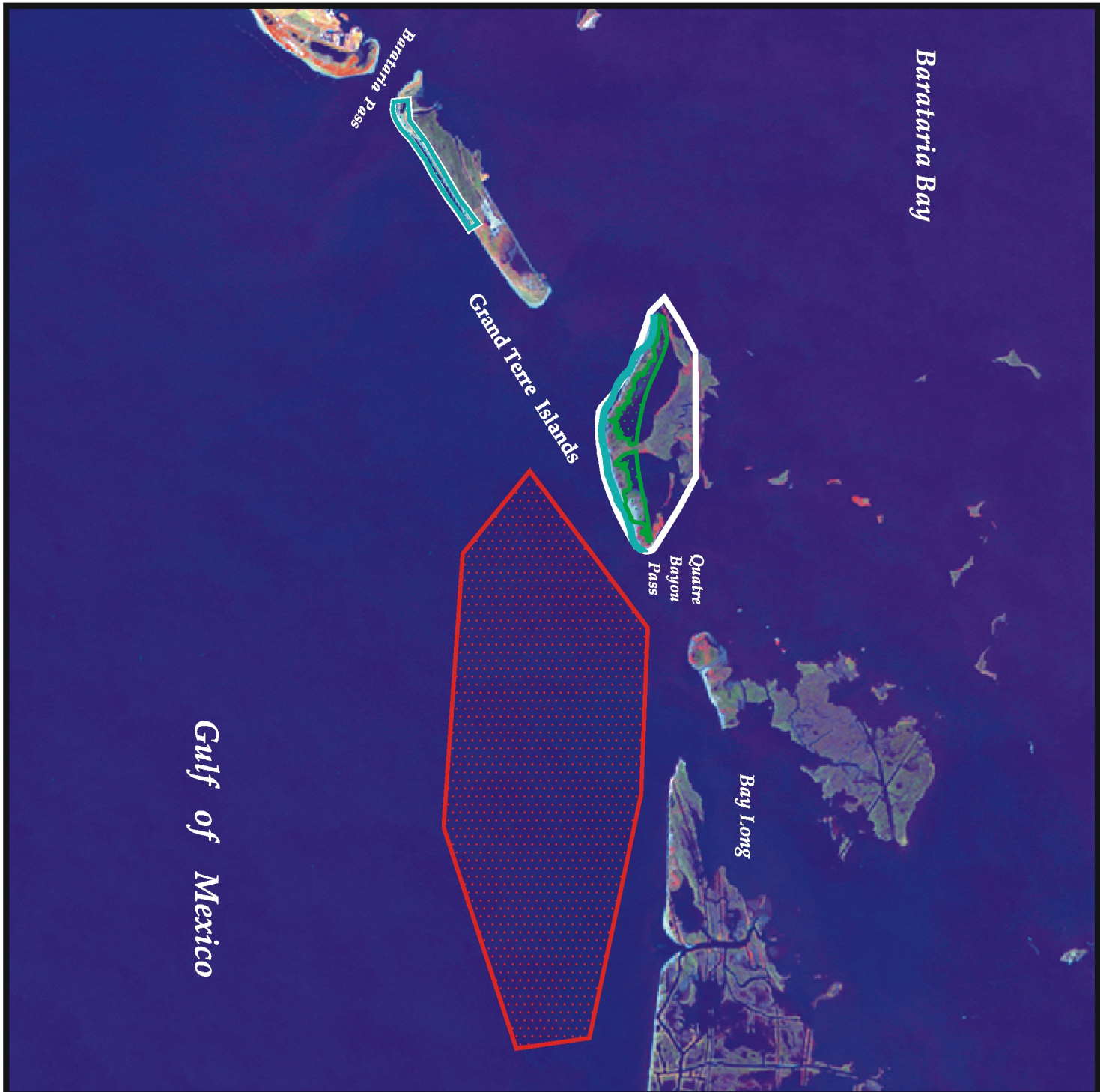
-  Borrow Area*
 -  Marsh Creation Area*
 -  Beach Nourishment Area*
 -  Project Boundary
- * denotes proposed features



Map Produced By:
 U.S. Department of the Interior
 U.S. Geological Survey
 National Wetlands Research Center
 Coastal Restoration Field Station

Background Imagery:
 2002 Thematic Mapper Satellite Imagery

Map Date: October 16, 2003
 Map ID: 2002-11-551
 Data accurate as of: March 18, 2003



Gulf of Mexico