

Geography Notes for 2000 & 2001
Supplemental Surveys and
American Community Surveys



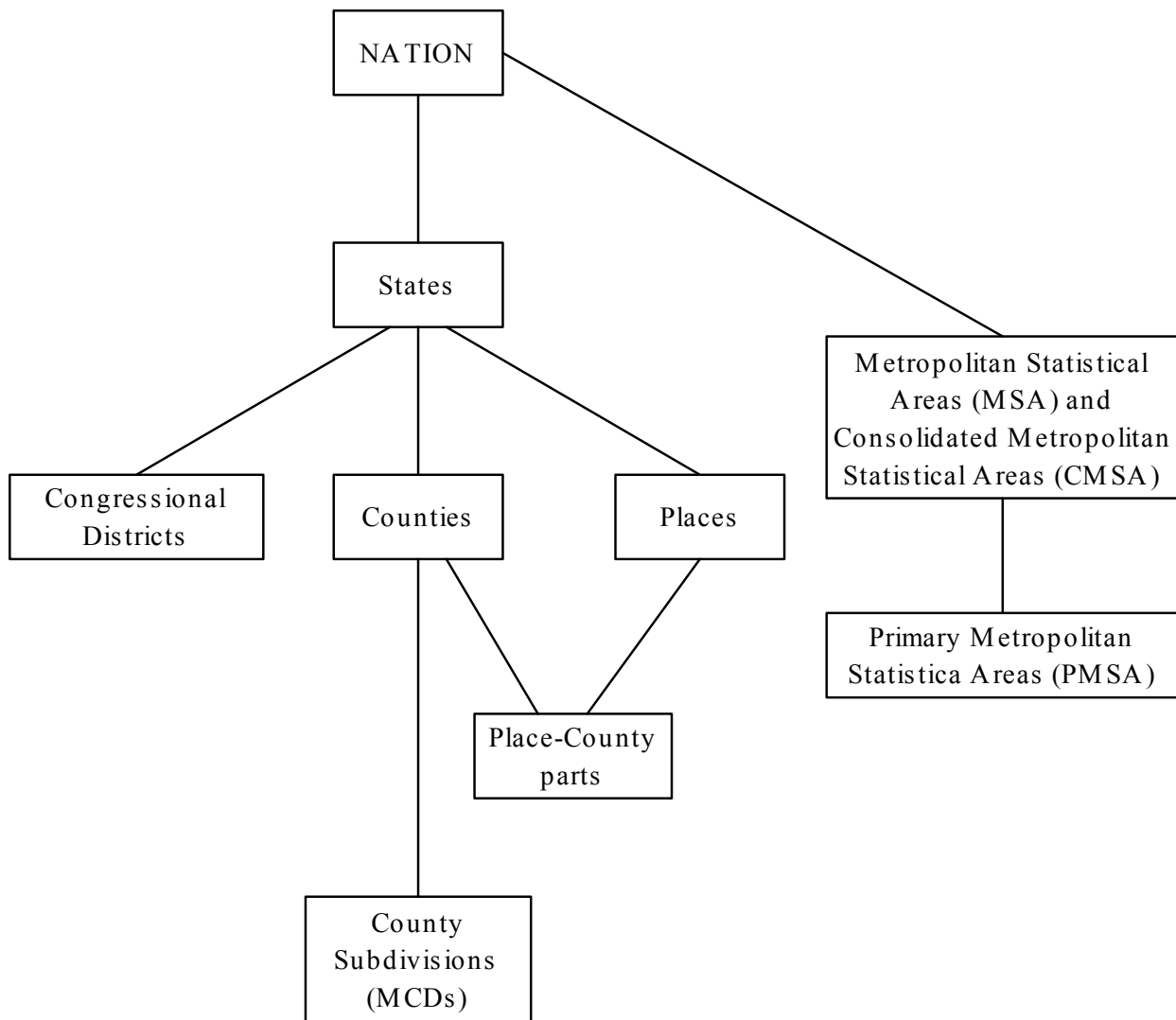
Table of Contents

The Supplementary Surveys	2
The American Community Surveys	4
Overlapping Geographic Summary Levels	4
Metropolitan Statistical Areas in the Supplementary Surveys	5
Geographic Areas for Which Data Are Available	20
Equivalent Geographies in the Supplementary Surveys	52
Glossary of Geographic Terms	63

The Supplementary Surveys

The 2000 and 2001 Supplementary Surveys produce single-year estimates for areas of 250,000 or more household population, and *2000 to 2001 Change Profiles* for all states, and areas with a household population of 1 million or more. They use common political divisions, such as states, counties, places and metropolitan statistical areas. This document contains an abbreviated explanation of the Census Bureau's geographic hierarchy, and some of the more common terms, to get you started using data from the Supplementary Surveys.

Not all levels of geography are represented in the Supplementary Survey data products. The following diagram shows the portions of the Census Bureau's geographic hierarchy that are included in the Supplementary Survey data products.



Data from the Supplementary Surveys are available for geographic areas that are *wholly contained within self-representing Primary Sampling Units*. PSU is short for primary sampling unit. It is a county or a group of counties that are treated as a single sample unit. Each PSU falls within the boundary of a state.

The Supplementary Surveys use a two-stage sample of housing units. The first stage of sampling divides the state into PSUs and selects a sample of these PSUs. Then, the final (second stage) sample of housing units is taken from the chosen PSUs. Certain PSUs (roughly, those with an estimated population of 250,000 or more) are designated as "self-representing" (SR). The remaining PSUs are referred to as "non-self representing" (NSR). The NSR PSUs are grouped into clusters and only two are chosen to represent all of the PSUs in the cluster. In the final sample, housing units are taken from all the SR PSUs and only the two selected NSR PSUs.

For more information on PSU definition and selection for sample, see the "Accuracy of the data" section on the Census Supplementary Survey website – (<http://www.census.gov/acs/www/AdvMeth/index.htm>).

Supplementary Survey data are available for the following geographic summary levels:

Summary Level		Number of areas published			Comments
		2000	2001	Change	
010	Nation	1	1	1	
040	State	51	51	51	Includes the District of Columbia
050	County	216	220	34	Marion County, Florida is the only county with a household population greater than 250,000 which we are unable to publish.
060	County Subdivision (MCD)	26	25		
155	Place-County	68	69	12	
160	Place	64	66	9	Two cities – Lexington, Kentucky, and Louisville, Kentucky – have a household population greater than 250,000 but cannot be published.
380	Metropolitan Statistical Area (MSA) / Consolidated Metropolitan Statistical Area (CMSA)	113	113	30	
385	CMSA / Primary Metropolitan Statistical Area (PMSA)	46	48	26	
500	Congressional District	211	211		

The American Community Surveys

Data from the 2000 and 2001 American Community Survey test sites are available for geographic areas that have a household population of 65,000 or greater. American Community Survey data are available for the following geographic summary levels:

Summary Level		Number of areas published			Comments
		2000	2001	Change	
001	Site	21	21		Most sites that are equivalent to a single county; others are two or three adjacent counties
050	County	21	21	13	
060	County Subdivision (MCD)	3	5		
155	Place-County	3	4	3	
160	Place	20	17	3	

Overlapping Geographic Summary Levels

Both the Supplementary Survey and the American Community Survey follow the decennial census convention of displaying the same geographic area under multiple summary levels. For example, Bronx, New York is shown under the following summary levels:

060 - County subdivision (MCD)	Bronx borough
050 - County	Bronx County
155 - Place-County	New York city, Bronx County pt.

In addition, some geographic areas appear in both the Supplementary Survey and American Community Survey data products.

Metropolitan Statistical Areas in the Supplementary Surveys

The table below shows all current Metropolitan Statistical Areas (MSA), Consolidated Metropolitan Statistical Areas (CMSA), and Primary Metropolitan Statistical Areas (PMSA) in the United States. The shaded rows indicate metropolitan areas which cannot be published from the Supplementary Surveys.

MSA-CMSA code	PMSA code	MSA, CMSA, or PMSA Name	2000	2001	Change
0040		Abilene, TX MSA			
0120		Albany, GA MSA			
0160		Albany--Schenectady--Troy, NY MSA	yes	yes	
0200		Albuquerque, NM MSA			
0220		Alexandria, LA MSA			
0240		Allentown--Bethlehem--Easton, PA MSA	yes	yes	
0280		Altoona, PA MSA			
0320		Amarillo, TX MSA			
0380		Anchorage, AK MSA	yes	yes	
0450		Anniston, AL MSA			
0460		Appleton--Oshkosh--Neenah, WI MSA	yes	yes	
0480		Asheville, NC MSA			
0500		Athens, GA MSA			
0520		Atlanta, GA MSA	yes	yes	yes
0580		Auburn--Opelika, AL MSA			
0600		Augusta--Aiken, GA--SC MSA	yes	yes	
0640		Austin--San Marcos, TX MSA	yes	yes	yes
0680		Bakersfield, CA MSA	yes	yes	
0730		Bangor, ME MSA			

MSA-CMSA code	PMSA code	MSA, CMSA, or PMSA Name	2000	2001	Change
0740		Barnstable--Yarmouth, MA MSA			
0760		Baton Rouge, LA MSA	yes	yes	
0840		Beaumont--Port Arthur, TX MSA	yes	yes	
0860		Bellingham, WA MSA			
0870		Benton Harbor, MI MSA			
0880		Billings, MT MSA			
0920		Biloxi--Gulfport--Pascagoula, MS MSA	yes	yes	
0960		Binghamton, NY MSA			
1000		Birmingham, AL MSA	yes	yes	
1010		Bismarck, ND MSA			
1020		Bloomington, IN MSA			
1040		Bloomington--Normal, IL MSA			
1080		Boise City, ID MSA	yes	yes	
1122		Boston--Worcester--Lawrence, MA--NH--ME--CT CMSA	yes	yes	yes
1122	1120	Boston, MA--NH PMSA	yes	yes	yes
1122	1200	Brockton, MA PMSA		yes	
1122	2600	Fitchburg--Leominster, MA PMSA			
1122	4160	Lawrence, MA--NH PMSA	yes	yes	
1122	4560	Lowell, MA--NH PMSA	yes	yes	
1122	4760	Manchester, NH PMSA			
1122	5350	Nashua, NH PMSA			
1122	5400	New Bedford, MA PMSA			
1122	6450	Portsmouth--Rochester, NH--ME PMSA			

MSA-CMSA code	PMSA code	MSA, CMSA, or PMSA Name	2000	2001	Change
1122	9240	Worcester, MA--CT PMSA	yes	yes	
1240		Brownsville--Harlingen--San Benito, TX MSA	yes	yes	
1260		Bryan--College Station, TX MSA			
1280		Buffalo--Niagara Falls, NY MSA	yes	yes	yes
1305		Burlington, VT MSA			
1320		Canton--Massillon, OH MSA	yes	yes	
1350		Casper, WY MSA			
1360		Cedar Rapids, IA MSA			
1400		Champaign--Urbana, IL MSA			
1440		Charleston--North Charleston, SC MSA	yes	yes	
1480		Charleston, WV MSA			
1520		Charlotte--Gastonia--Rock Hill, NC--SC MSA			
1540		Charlottesville, VA MSA			
1560		Chattanooga, TN--GA MSA			
1580		Cheyenne, WY MSA			
1602		Chicago--Gary--Kenosha, IL--IN--WI CMSA			
1602	1600	Chicago, IL PMSA	yes	yes	yes
1602	2960	Gary, IN PMSA			
1602	3740	Kankakee, IL PMSA			
1602	3800	Kenosha, WI PMSA			
1620		Chico--Paradise, CA MSA			
1642		Cincinnati--Hamilton, OH--KY--IN CMSA			
1642	1640	Cincinnati, OH--KY--IN PMSA			

MSA-CMSA code	PMSA code	MSA, CMSA, or PMSA Name	2000	2001	Change
1642	3200	Hamilton--Middletown, OH PMSA	yes	yes	
1660		Clarksville--Hopkinsville, TN--KY MSA			
1692		Cleveland--Akron, OH CMSA	yes	yes	yes
1692	0080	Akron, OH PMSA	yes	yes	
1692	1680	Cleveland--Lorain--Elyria, OH PMSA	yes	yes	yes
1720		Colorado Springs, CO MSA	yes	yes	
1740		Columbia, MO MSA			
1760		Columbia, SC MSA	yes	yes	
1800		Columbus, GA--AL MSA			
1840		Columbus, OH MSA			
1880		Corpus Christi, TX MSA	yes	yes	
1890		Corvallis, OR MSA			
1900		Cumberland, MD--WV MSA			
1922		Dallas--Fort Worth, TX CMSA	yes	yes	yes
1922	1920	Dallas, TX PMSA	yes	yes	yes
1922	2800	Fort Worth--Arlington, TX PMSA	yes	yes	yes
1950		Danville, VA MSA			
1960		Davenport--Moline--Rock Island, IA--IL MSA	yes	yes	
2000		Dayton--Springfield, OH MSA	yes	yes	
2020		Daytona Beach, FL MSA	yes	yes	
2030		Decatur, AL MSA			
2040		Decatur, IL MSA			
2082		Denver--Boulder--Greeley, CO CMSA			

MSA-CMSA code	PMSA code	MSA, CMSA, or PMSA Name	2000	2001	Change
2082	1125	Boulder--Longmont, CO PMSA	yes	yes	
2082	2080	Denver, CO PMSA	yes	yes	yes
2082	3060	Greeley, CO PMSA			
2120		Des Moines, IA MSA	yes	yes	
2162		Detroit--Ann Arbor--Flint, MI CMSA	yes	yes	yes
2162	0440	Ann Arbor, MI PMSA	yes	yes	
2162	2160	Detroit, MI PMSA	yes	yes	yes
2162	2640	Flint, MI PMSA	yes	yes	
2180		Dothan, AL MSA			
2190		Dover, DE MSA			
2200		Dubuque, IA MSA			
2240		Duluth--Superior, MN--WI MSA			
2290		Eau Claire, WI MSA			
2320		El Paso, TX MSA	yes	yes	
2330		Elkhart--Goshen, IN MSA			
2335		Elmira, NY MSA			
2340		Enid, OK MSA			
2360		Erie, PA MSA	yes	yes	
2400		Eugene--Springfield, OR MSA	yes	yes	
2440		Evansville--Henderson, IN--KY MSA			
2520		Fargo--Moorhead, ND--MN MSA			
2560		Fayetteville, NC MSA	yes	yes	
2580		Fayetteville--Springdale--Rogers, AR MSA	yes	yes	

MSA-CMSA code	PMSA code	MSA, CMSA, or PMSA Name	2000	2001	Change
2620		Flagstaff, AZ--UT MSA			
2650		Florence, AL MSA			
2655		Florence, SC MSA			
2670		Fort Collins--Loveland, CO MSA			
2700		Fort Myers--Cape Coral, FL MSA	yes	yes	
2710		Fort Pierce--Port St. Lucie, FL MSA	yes	yes	
2720		Fort Smith, AR--OK MSA			
2750		Fort Walton Beach, FL MSA			
2760		Fort Wayne, IN MSA	yes	yes	
2840		Fresno, CA MSA	yes	yes	
2880		Gadsden, AL MSA			
2900		Gainesville, FL MSA			
2975		Glens Falls, NY MSA			
2980		Goldsboro, NC MSA			
2985		Grand Forks, ND--MN MSA			
2995		Grand Junction, CO MSA			
3000		Grand Rapids--Muskegon--Holland, MI MSA	yes	yes	yes
3040		Great Falls, MT MSA			
3080		Green Bay, WI MSA			
3120		Greensboro--Winston-Salem--High Point, NC MSA	yes	yes	yes
3150		Greenville, NC MSA			
3160		Greenville--Spartanburg--Anderson, SC MSA	yes	yes	
3240		Harrisburg--Lebanon--Carlisle, PA MSA	yes	yes	

MSA-CMSA code	PMSA code	MSA, CMSA, or PMSA Name	2000	2001	Change
3280		Hartford, CT MSA	yes	yes	yes
3285		Hattiesburg, MS MSA			
3290		Hickory--Morganton--Lenoir, NC MSA	yes	yes	
3320		Honolulu, HI MSA	yes	yes	
3350		Houma, LA MSA			
3362		Houston--Galveston--Brazoria, TX CMSA			
3362	1145	Brazoria, TX PMSA			
3362	2920	Galveston--Texas City, TX PMSA		yes	
3362	3360	Houston, TX PMSA	yes	yes	yes
3400		Huntington--Ashland, WV--KY--OH MSA			
3440		Huntsville, AL MSA	yes	yes	
3480		Indianapolis, IN MSA	yes	yes	yes
3500		Iowa City, IA MSA			
3520		Jackson, MI MSA			
3560		Jackson, MS MSA	yes	yes	
3580		Jackson, TN MSA			
3600		Jacksonville, FL MSA	yes	yes	yes
3605		Jacksonville, NC MSA			
3610		Jamestown, NY MSA			
3620		Janesville--Beloit, WI MSA			
3660		Johnson City--Kingsport--Bristol, TN--VA MSA	yes	yes	
3680		Johnstown, PA MSA			
3700		Jonesboro, AR MSA			

MSA-CMSA code	PMSA code	MSA, CMSA, or PMSA Name	2000	2001	Change
3710		Joplin, MO MSA			
3720		Kalamazoo--Battle Creek, MI MSA	yes	yes	
3760		Kansas City, MO--KS MSA	yes	yes	yes
3810		Killeen--Temple, TX MSA	yes	yes	
3840		Knoxville, TN MSA	yes	yes	
3850		Kokomo, IN MSA			
3870		La Crosse, WI--MN MSA			
3880		Lafayette, LA MSA	yes	yes	
3920		Lafayette, IN MSA			
3960		Lake Charles, LA MSA			
3980		Lakeland--Winter Haven, FL MSA	yes	yes	
4000		Lancaster, PA MSA	yes	yes	
4040		Lansing--East Lansing, MI MSA	yes	yes	
4080		Laredo, TX MSA			
4100		Las Cruces, NM MSA			
4120		Las Vegas, NV--AZ MSA			
4150		Lawrence, KS MSA			
4200		Lawton, OK MSA			
4240		Lewiston--Auburn, ME MSA			
4280		Lexington, KY MSA	yes	yes	
4320		Lima, OH MSA			
4360		Lincoln, NE MSA			
4400		Little Rock--North Little Rock, AR MSA	yes	yes	

MSA-CMSA code	PMSA code	MSA, CMSA, or PMSA Name	2000	2001	Change
4420		Longview--Marshall, TX MSA			
4472		Los Angeles--Riverside--Orange County, CA CMSA	yes	yes	yes
4472	4480	Los Angeles--Long Beach, CA PMSA	yes	yes	yes
4472	5945	Orange County, CA PMSA	yes	yes	yes
4472	6780	Riverside--San Bernardino, CA PMSA	yes	yes	yes
4472	8735	Ventura, CA PMSA	yes	yes	
4520		Louisville, KY--IN MSA			
4600		Lubbock, TX MSA			
4640		Lynchburg, VA MSA			
4680		Macon, GA MSA	yes	yes	
4720		Madison, WI MSA	yes	yes	
4800		Mansfield, OH MSA			
4880		McAllen--Edinburg--Mission, TX MSA	yes	yes	
4890		Medford--Ashland, OR MSA			
4900		Melbourne--Titusville--Palm Bay, FL MSA	yes	yes	
4920		Memphis, TN--AR--MS MSA			
4940		Merced, CA MSA			
4992		Miami--Fort Lauderdale, FL CMSA	yes	yes	yes
4992	2680	Fort Lauderdale, FL PMSA	yes	yes	yes
4992	5000	Miami, FL PMSA	yes	yes	yes
5082	5080	Milwaukee--Waukesha, WI PMSA	yes	yes	yes
5082	6600	Racine, WI PMSA			
5120		Minneapolis--St. Paul, MN--WI MSA			

MSA-CMSA code	PMSA code	MSA, CMSA, or PMSA Name	2000	2001	Change
5140		Missoula, MT MSA			
5160		Mobile, AL MSA	yes	yes	
5170		Modesto, CA MSA	yes	yes	
5200		Monroe, LA MSA			
5240		Montgomery, AL MSA	yes	yes	
5280		Muncie, IN MSA			
5330		Myrtle Beach, SC MSA			
5345		Naples, FL MSA			
5360		Nashville, TN MSA	yes	yes	yes
5520		New London--Norwich, CT--RI MSA	yes	yes	
5560		New Orleans, LA MSA	yes	yes	yes
5602		New York--Northern New Jersey--Long Island, NY--NJ--CT--PA CMSA			
5602	0875	Bergen--Passaic, NJ PMSA	yes	yes	yes
5602	1160	Bridgeport, CT PMSA	yes	yes	
5602	1930	Danbury, CT PMSA			
5602	2281	Dutchess County, NY PMSA	yes	yes	
5602	3640	Jersey City, NJ PMSA	yes	yes	
5602	5015	Middlesex--Somerset--Hunterdon, NJ PMSA	yes	yes	yes
5602	5190	Monmouth--Ocean, NJ PMSA	yes	yes	yes
5602	5380	Nassau--Suffolk, NY PMSA	yes	yes	yes
5602	5480	New Haven--Meriden, CT PMSA	yes	yes	
5602	5600	New York, NY PMSA	yes	yes	yes

MSA-CMSA code	PMSA code	MSA, CMSA, or PMSA Name	2000	2001	Change
5602	5640	Newark, NJ PMSA	yes	yes	yes
5602	5660	Newburgh, NY--PA PMSA			
5602	8040	Stamford--Norwalk, CT PMSA	yes	yes	
5602	8480	Trenton, NJ PMSA	yes	yes	
5602	8880	Waterbury, CT PMSA			
5720		Norfolk--Virginia Beach--Newport News, VA--NC MSA			
5790		Ocala, FL MSA			
5800		Odessa--Midland, TX MSA			
5880		Oklahoma City, OK MSA	yes	yes	yes
5920		Omaha, NE--IA MSA			
5960		Orlando, FL MSA	yes	yes	yes
5990		Owensboro, KY MSA			
6015		Panama City, FL MSA			
6020		Parkersburg--Marietta, WV--OH MSA			
6080		Pensacola, FL MSA	yes	yes	
6120		Peoria--Pekin, IL MSA	yes	yes	
6162		Philadelphia--Wilmington--Atlantic City, PA--NJ--DE--MD CMSA			
6162	0560	Atlantic--Cape May, NJ PMSA	yes	yes	
6162	6160	Philadelphia, PA--NJ PMSA	yes	yes	yes
6162	8760	Vineland--Millville--Bridgeton, NJ PMSA			
6162	9160	Wilmington--Newark, DE--MD PMSA			
6200		Phoenix--Mesa, AZ MSA			
6240		Pine Bluff, AR MSA			

MSA-CMSA code	PMSA code	MSA, CMSA, or PMSA Name	2000	2001	Change
6280		Pittsburgh, PA MSA	yes	yes	yes
6320		Pittsfield, MA MSA			
6340		Pocatello, ID MSA			
6400		Portland, ME MSA			
6442		Portland--Salem, OR--WA CMSA			
6442	6440	Portland--Vancouver, OR--WA PMSA			
6442	7080	Salem, OR PMSA	yes	yes	
6480		Providence--Fall River--Warwick, RI--MA MSA	yes	yes	yes
6520		Provo--Orem, UT MSA	yes	yes	
6560		Pueblo, CO MSA			
6580		Punta Gorda, FL MSA			
6640		Raleigh--Durham--Chapel Hill, NC MSA	yes	yes	yes
6660		Rapid City, SD MSA			
6680		Reading, PA MSA	yes	yes	
6690		Redding, CA MSA			
6720		Reno, NV MSA	yes	yes	
6740		Richland--Kennewick--Pasco, WA MSA			
6760		Richmond--Petersburg, VA MSA	yes	yes	
6800		Roanoke, VA MSA			
6820		Rochester, MN MSA			
6840		Rochester, NY MSA	yes	yes	yes
6880		Rockford, IL MSA	yes	yes	
6895		Rocky Mount, NC MSA			

MSA-CMSA code	PMSA code	MSA, CMSA, or PMSA Name	2000	2001	Change
6922		Sacramento--Yolo, CA CMSA			
6922	6920	Sacramento, CA PMSA	yes	yes	yes
6922	9270	Yolo, CA PMSA			
6960		Saginaw--Bay City--Midland, MI MSA	yes	yes	
6980		St. Cloud, MN MSA			
7000		St. Joseph, MO MSA			
7040		St. Louis, MO--IL MSA	yes	yes	yes
7120		Salinas, CA MSA	yes	yes	
7160		Salt Lake City--Ogden, UT MSA	yes	yes	yes
7200		San Angelo, TX MSA			
7240		San Antonio, TX MSA	yes	yes	yes
7320		San Diego, CA MSA	yes	yes	yes
7362		San Francisco--Oakland--San Jose, CA CMSA	yes	yes	yes
7362	5775	Oakland, CA PMSA	yes	yes	yes
7362	7360	San Francisco, CA PMSA	yes	yes	yes
7362	7400	San Jose, CA PMSA	yes	yes	yes
7362	7485	Santa Cruz--Watsonville, CA PMSA			
7362	7500	Santa Rosa, CA PMSA	yes	yes	
7362	8720	Vallejo--Fairfield--Napa, CA PMSA	yes	yes	
7460		San Luis Obispo--Atascadero--Paso Robles, CA MSA			
7480		Santa Barbara--Santa Maria--Lompoc, CA MSA	yes	yes	
7490		Santa Fe, NM MSA			
7510		Sarasota--Bradenton, FL MSA	yes	yes	

MSA-CMSA code	PMSA code	MSA, CMSA, or PMSA Name	2000	2001	Change
7520		Savannah, GA MSA	yes	yes	
7560		Scranton--Wilkes-Barre--Hazleton, PA MSA	yes	yes	
7602		Seattle--Tacoma--Bremerton, WA CMSA			
7602	1150	Bremerton, WA PMSA			
7602	5910	Olympia, WA PMSA			
7602	7600	Seattle--Bellevue--Everett, WA PMSA	yes	yes	yes
7602	8200	Tacoma, WA PMSA	yes	yes	
7610		Sharon, PA MSA			
7620		Sheboygan, WI MSA			
7640		Sherman--Denison, TX MSA			
7680		Shreveport--Bossier City, LA MSA	yes	yes	
7720		Sioux City, IA--NE MSA			
7760		Sioux Falls, SD MSA			
7800		South Bend, IN MSA	yes	yes	
7840		Spokane, WA MSA	yes	yes	
7880		Springfield, IL MSA			
7920		Springfield, MO MSA	yes	yes	
8000		Springfield, MA MSA	yes	yes	
8050		State College, PA MSA			
8080		Steubenville--Weirton, OH--WV MSA			
8120		Stockton--Lodi, CA MSA	yes	yes	
8140		Sumter, SC MSA			
8160		Syracuse, NY MSA	yes	yes	

MSA-CMSA code	PMSA code	MSA, CMSA, or PMSA Name	2000	2001	Change
8240		Tallahassee, FL MSA	yes	yes	
8280		Tampa--St. Petersburg--Clearwater, FL MSA	yes	yes	yes
8320		Terre Haute, IN MSA			
8360		Texarkana, TX--Texarkana, AR MSA			
8400		Toledo, OH MSA	yes	yes	
8440		Topeka, KS MSA			
8520		Tucson, AZ MSA	yes	yes	
8560		Tulsa, OK MSA	yes	yes	
8600		Tuscaloosa, AL MSA			
8640		Tyler, TX MSA			
8680		Utica--Rome, NY MSA	yes	yes	
8750		Victoria, TX MSA			
8780		Visalia--Tulare--Porterville, CA MSA	yes	yes	
8800		Waco, TX MSA			
8872		Washington--Baltimore, DC--MD--VA--WV CMSA			
8872	0720	Baltimore, MD PMSA			
8872	3180	Hagerstown, MD PMSA			
8872	8840	Washington, DC--MD--VA--WV PMSA			
8920		Waterloo--Cedar Falls, IA MSA			
8940		Wausau, WI MSA			
8960		West Palm Beach--Boca Raton, FL MSA	yes	yes	yes
9000		Wheeling, WV--OH MSA			
9040		Wichita, KS MSA	yes	yes	

MSA-CMSA code	PMSA code	MSA, CMSA, or PMSA Name	2000	2001	Change
9080		Wichita Falls, TX MSA			
9140		Williamsport, PA MSA			
9200		Wilmington, NC MSA			
9260		Yakima, WA MSA			
9280		York, PA MSA	yes	yes	
9320		Youngstown--Warren, OH MSA	yes	yes	
9340		Yuba City, CA MSA			
9360		Yuma, AZ MSA			

Geographic Areas for Which Data Are Available

<u>State</u>	<u>Name</u>	<u>Summary Level</u>	<u>2000</u>	<u>2001</u>	<u>Change</u>	<u>Data Set(s)</u>
UNITED STATES	<i>nation</i>	010 - Nation	x	x	x	SS
ALABAMA	<i>state only</i>	040 - State	x	x	x	SS
	Birmingham, AL MSA	380 - MSA/CMSA	x	x		SS
	Huntsville, AL MSA	380 - MSA/CMSA	x	x		SS
	Jefferson County	050 - County	x	x		SS
	Madison County	050 - County	x	x		SS
	Mobile County	050 - County	x	x		SS
	Mobile, AL MSA	380 - MSA/CMSA	x	x		SS
	Montgomery, AL MSA	380 - MSA/CMSA	x	x		SS
ALASKA	<i>state only</i>	040 - State	x	x	x	SS
	AK Congressional District (at Large)	500 - Congressional District	x	x		SS
	Anchorage Municipality	050 - County	x	x		SS
	Anchorage municipality	160 - Place	x	x		SS
	Anchorage municipality, Anchorage Municipality pt.	155 - Place-County	x	x		SS
	Anchorage, AK MSA	380 - MSA/CMSA	x	x		SS
ARIZONA	<i>state only</i>	040 - State	x	x	x	SS
	AZ Congressional District 1	500 - Congressional District	x	x		SS
	AZ Congressional District 4	500 - Congressional District	x	x		SS
	Maricopa County	050 - County	x	x	x	SS
	Mesa city	160 - Place	x	x		SS
	Mesa city, Maricopa County pt.	155 - Place-County	x	x		SS
	Phoenix city	160 - Place	x	x	x	SS

<u>State</u>	<u>Name</u>	<u>Summary Level</u>	<u>2000</u>	<u>2001</u>	<u>Change</u>	<u>Data Set(s)</u>
	Phoenix city, Maricopa County pt.	155 - Place-County	x	x	x	SS
	Pima County	050 - County	x	x	x	ACS & SS
	Tucson city	160 - Place	x	x	x	ACS & SS
	Tucson city, Pima County pt.	155 - Place-County	x	x		SS
	Tucson, AZ MSA	380 - MSA/CMSA	x	x		SS
ARKANSAS	<i>state only</i>	040 - State	x	x	x	SS
	Fayetteville--Springdale--Rogers, AR MSA	380 - MSA/CMSA	x	x		SS
	Jefferson County	050 - County	x	x		ACS
	Little Rock--North Little Rock, AR MSA	380 - MSA/CMSA	x	x		SS
	Pulaski County	050 - County	x	x		SS
CALIFORNIA	<i>state only</i>	040 - State	x	x	x	SS
	Alameda County	050 - County	x	x	x	SS
	Anaheim city	160 - Place	x	x		SS
	Anaheim city, Orange County pt.	155 - Place-County	x	x		SS
	Bakersfield, CA MSA	380 - MSA/CMSA	x	x		SS
	CA Congressional District 10	500 - Congressional District	x	x		SS
	CA Congressional District 11	500 - Congressional District	x	x		SS
	CA Congressional District 12	500 - Congressional District	x	x		SS
	CA Congressional District 13	500 - Congressional District	x	x		SS
	CA Congressional District 14	500 - Congressional District	x	x		SS
	CA Congressional District 15	500 - Congressional District	x	x		SS
	CA Congressional District 16	500 - Congressional District	x	x		SS
	CA Congressional District 21	500 - Congressional District	x	x		SS
	CA Congressional District 22	500 - Congressional District	x	x		SS
	CA Congressional District 23	500 - Congressional District	x	x		SS
	CA Congressional District 24	500 - Congressional District	x	x		SS

<u>State</u>	<u>Name</u>	<u>Summary Level</u>	<u>2000</u>	<u>2001</u>	<u>Change</u>	<u>Data Set(s)</u>
	CA Congressional District 25	500 - Congressional District	x	x		SS
	CA Congressional District 26	500 - Congressional District	x	x		SS
	CA Congressional District 27	500 - Congressional District	x	x		SS
	CA Congressional District 28	500 - Congressional District	x	x		SS
	CA Congressional District 29	500 - Congressional District	x	x		SS
	CA Congressional District 30	500 - Congressional District	x	x		SS
	CA Congressional District 31	500 - Congressional District	x	x		SS
	CA Congressional District 32	500 - Congressional District	x	x		SS
	CA Congressional District 33	500 - Congressional District	x	x		SS
	CA Congressional District 34	500 - Congressional District	x	x		SS
	CA Congressional District 35	500 - Congressional District	x	x		SS
	CA Congressional District 36	500 - Congressional District	x	x		SS
	CA Congressional District 37	500 - Congressional District	x	x		SS
	CA Congressional District 38	500 - Congressional District	x	x		SS
	CA Congressional District 39	500 - Congressional District	x	x		SS
	CA Congressional District 41	500 - Congressional District	x	x		SS
	CA Congressional District 42	500 - Congressional District	x	x		SS
	CA Congressional District 43	500 - Congressional District	x	x		SS
	CA Congressional District 44	500 - Congressional District	x	x		SS
	CA Congressional District 45	500 - Congressional District	x	x		SS
	CA Congressional District 46	500 - Congressional District	x	x		SS
	CA Congressional District 47	500 - Congressional District	x	x		SS
	CA Congressional District 48	500 - Congressional District	x	x		SS
	CA Congressional District 49	500 - Congressional District	x	x		SS
	CA Congressional District 5	500 - Congressional District	x	x		SS
	CA Congressional District 50	500 - Congressional District	x	x		SS
	CA Congressional District 51	500 - Congressional District	x	x		SS
	CA Congressional District 6	500 - Congressional District	x	x		SS

<u>State</u>	<u>Name</u>	<u>Summary Level</u>	<u>2000</u>	<u>2001</u>	<u>Change</u>	<u>Data Set(s)</u>
	CA Congressional District 7	500 - Congressional District	x	x		SS
	CA Congressional District 8	500 - Congressional District	x	x		SS
	CA Congressional District 9	500 - Congressional District	x	x		SS
	Contra Costa County	050 - County	x	x		SS
	Fresno city	160 - Place	x	x		SS
	Fresno city, Fresno County pt.	155 - Place-County	x	x		SS
	Fresno County	050 - County	x	x		SS
	Fresno, CA MSA	380 - MSA/CMSA	x	x		SS
	Kern County	050 - County	x	x		SS
	Long Beach city	160 - Place	x	x		SS
	Long Beach city, Los Angeles County pt.	155 - Place-County	x	x		SS
	Los Angeles city	160 - Place	x	x	x	SS
	Los Angeles city, Los Angeles County pt.	155 - Place-County	x	x	x	SS
	Los Angeles County	050 - County	x	x	x	SS
	Los Angeles--Long Beach, CA PMSA	385 - CMSA/PMSA	x	x	x	SS
	Los Angeles--Riverside--Orange County, CA CMSA	380 - MSA/CMSA	x	x	x	SS
	Modesto, CA MSA	380 - MSA/CMSA	x	x		SS
	Monterey County	050 - County	x	x		SS
	Oakland city	160 - Place	x	x		SS
	Oakland city, Alameda County pt.	155 - Place-County	x	x		SS
	Oakland, CA PMSA	385 - CMSA/PMSA	x	x	x	SS
	Orange County	050 - County	x	x	x	SS
	Orange County, CA PMSA	385 - CMSA/PMSA	x	x	x	SS
	Riverside city	160 - Place	x	x		SS
	Riverside city, Riverside County pt.	155 - Place-County	x	x		SS
	Riverside County	050 - County	x	x	x	SS
	Riverside--San Bernardino, CA PMSA	385 - CMSA/PMSA	x	x	x	SS
	Sacramento city	160 - Place	x	x		SS

<u>State</u>	<u>Name</u>	<u>Summary Level</u>	<u>2000</u>	<u>2001</u>	<u>Change</u>	<u>Data Set(s)</u>
	Sacramento city, Sacramento County pt.	155 - Place-County	x	x		SS
	Sacramento County	050 - County	x	x	x	SS
	Sacramento, CA PMSA	385 - CMSA/PMSA	x	x	x	SS
	Salinas, CA MSA	380 - MSA/CMSA	x	x		SS
	San Bernardino County	050 - County	x	x		SS
	San Diego city	160 - Place	x	x	x	SS
	San Diego city, San Diego County pt.	155 - Place-County	x	x	x	SS
	San Diego County	050 - County	x	x	x	SS
	San Diego, CA MSA	380 - MSA/CMSA	x	x	x	SS
	San Francisco city	160 - Place	x	x		SS
	San Francisco city, San Francisco County pt.	155 - Place-County	x	x		SS
	San Francisco County	050 - County	x	x	x	ACS & SS
	San Francisco, CA PMSA	385 - CMSA/PMSA	x	x	x	SS
	San Francisco--Oakland--San Jose, CA CMSA	380 - MSA/CMSA	x	x	x	SS
	San Joaquin County	050 - County	x	x		SS
	San Jose city	160 - Place	x	x		SS
	San Jose city, Santa Clara County pt.	155 - Place-County	x	x		SS
	San Jose, CA PMSA	385 - CMSA/PMSA	x	x	x	SS
	San Mateo County	050 - County	x	x		SS
	Santa Ana city	160 - Place	x	x		SS
	Santa Ana city, Orange County pt.	155 - Place-County	x	x		SS
	Santa Barbara County	050 - County	x	x		SS
	Santa Barbara--Santa Maria--Lompoc, CA MSA	380 - MSA/CMSA	x	x		SS
	Santa Clara County	050 - County	x	x	x	SS
	Santa Rosa, CA PMSA	385 - CMSA/PMSA	x	x		SS
	Solano County	050 - County	x	x		SS
	Sonoma County	050 - County	x	x		SS
	Stanislaus County	050 - County	x	x		SS

<u>State</u>	<u>Name</u>	<u>Summary Level</u>	<u>2000</u>	<u>2001</u>	<u>Change</u>	<u>Data Set(s)</u>
	Stockton--Lodi, CA MSA	380 - MSA/CMSA	x	x		SS
	Tulare County	050 - County	x	x	x	ACS & SS
	Vallejo--Fairfield--Napa, CA PMSA	385 - CMSA/PMSA	x	x		SS
	Ventura County	050 - County	x	x		SS
	Ventura, CA PMSA	385 - CMSA/PMSA	x	x		SS
	Visalia city	160 - Place	x	x		ACS & SS
	Visalia--Tulare--Porterville, CA MSA	380 - MSA/CMSA	x	x		SS
COLORADO	<i>state only</i>	040 - State	x	x	x	SS
	Adams County	050 - County	x	x		SS
	Arapahoe County	050 - County	x	x		SS
	Aurora city	160 - Place	x	x		SS
	Boulder County	050 - County	x	x		SS
	Boulder--Longmont, CO PMSA	385 - CMSA/PMSA	x	x		SS
	CO Congressional District 1	500 - Congressional District	x	x		SS
	CO Congressional District 6	500 - Congressional District	x	x		SS
	Colorado Springs city	160 - Place	x	x		SS
	Colorado Springs city, El Paso County pt.	155 - Place-County	x	x		SS
	Colorado Springs, CO MSA	380 - MSA/CMSA	x	x		SS
	Denver city	160 - Place	x	x		SS
	Denver city, Denver County pt.	155 - Place-County	x	x		SS
	Denver County	050 - County	x	x		SS
	Denver, CO PMSA	385 - CMSA/PMSA	x	x	x	SS
	El Paso County	050 - County	x	x		SS
	Jefferson County	050 - County	x	x		SS
CONNECTICUT	<i>state only</i>	040 - State	x	x	x	SS
	Boston--Worcester--Lawrence, MA--NH--ME--CT	380 - MSA/CMSA	x	x	x	SS

<u>State</u>	<u>Name</u>	<u>Summary Level</u>	<u>2000</u>	<u>2001</u>	<u>Change</u>	<u>Data Set(s)</u>
	CMSA					
	Bridgeport, CT PMSA	385 - CMSA/PMSA	x	x		SS
	CT Congressional District 1	500 - Congressional District	x	x		SS
	CT Congressional District 2	500 - Congressional District	x	x		SS
	CT Congressional District 3	500 - Congressional District	x	x		SS
	CT Congressional District 4	500 - Congressional District	x	x		SS
	CT Congressional District 5	500 - Congressional District	x	x		SS
	CT Congressional District 6	500 - Congressional District	x	x		SS
	Fairfield County	050 - County	x	x		SS
	Hartford County	050 - County	x	x		SS
	Hartford, CT MSA	380 - MSA/CMSA	x	x	x	SS
	New Haven County	050 - County	x	x		SS
	New Haven--Meriden, CT PMSA	385 - CMSA/PMSA	x	x		SS
	New London--Norwich, CT--RI MSA	380 - MSA/CMSA	x	x		SS
	Stamford--Norwalk, CT PMSA	385 - CMSA/PMSA	x	x		SS
	Worcester, MA--CT PMSA	385 - CMSA/PMSA	x	x		SS
DELAWARE	<i>state only</i>	040 - State	x	x	x	SS
	DE Congressional District (at Large)	500 - Congressional District	x	x		SS
	New Castle County	050 - County	x	x		SS
DISTRICT OF COLUMBIA	<i>state only</i>	040 - State	x	x	x	SS
	DC Delegate District (at Large)	500 - Congressional District	x	x		SS
	District of Columbia	050 - County	x	x		SS
	Washington city	160 - Place	x	x		SS
	Washington city, District of Columbia pt.	155 - Place-County	x	x		SS

<u>State</u>	<u>Name</u>	<u>Summary Level</u>	<u>2000</u>	<u>2001</u>	<u>Change</u>	<u>Data Set(s)</u>
FLORIDA	<i>state only</i>	040 - State	x	x	x	SS
	Brevard County	050 - County	x	x		SS
	Broward County	050 - County	x	x	x	ACS & SS
	Coral Springs city	160 - Place	x	x		ACS
	Davie town	160 - Place	x	x		ACS
	Daytona Beach, FL MSA	380 - MSA/CMSA	x	x		SS
	Deerfield Beach city	160 - Place	x			ACS
	Duval County	050 - County	x	x		SS
	Escambia County	050 - County	x	x		SS
	FL Congressional District 10	500 - Congressional District	x	x		SS
	FL Congressional District 11	500 - Congressional District	x	x		SS
	FL Congressional District 17	500 - Congressional District	x	x		SS
	FL Congressional District 18	500 - Congressional District	x	x		SS
	FL Congressional District 19	500 - Congressional District	x	x		SS
	FL Congressional District 21	500 - Congressional District	x	x		SS
	FL Congressional District 22	500 - Congressional District	x	x		SS
	FL Congressional District 4	500 - Congressional District	x	x		SS
	FL Congressional District 7	500 - Congressional District	x	x		SS
	FL Congressional District 8	500 - Congressional District	x	x		SS
	FL Congressional District 9	500 - Congressional District	x	x		SS
	Fort Lauderdale city	160 - Place	x	x		ACS
	Fort Lauderdale, FL PMSA	385 - CMSA/PMSA	x	x	x	SS
	Fort Myers--Cape Coral, FL MSA	380 - MSA/CMSA	x	x		SS
	Fort Pierce--Port St. Lucie, FL MSA	380 - MSA/CMSA	x	x		SS
	Hillsborough County	050 - County	x	x	x	SS
	Hollywood city	160 - Place	x	x		ACS
	Jacksonville city	160 - Place	x	x		SS
	Jacksonville city, Duval County pt.	155 - Place-County	x	x		SS

<u>State</u>	<u>Name</u>	<u>Summary Level</u>	<u>2000</u>	<u>2001</u>	<u>Change</u>	<u>Data Set(s)</u>
	Jacksonville, FL MSA	380 - MSA/CMSA	x	x	x	SS
	Lakeland--Winter Haven, FL MSA	380 - MSA/CMSA	x	x		SS
	Lee County	050 - County	x	x		SS
	Manatee County	050 - County	x	x		SS
	Melbourne--Titusville--Palm Bay, FL MSA	380 - MSA/CMSA	x	x		SS
	Miami city	160 - Place	x	x		SS
	Miami city, Miami-Dade County pt.	155 - Place-County	x	x		SS
	Miami, FL PMSA	385 - CMSA/PMSA	x	x	x	SS
	Miami-Dade County	050 - County	x	x	x	SS
	Miami--Fort Lauderdale, FL CMSA	380 - MSA/CMSA	x	x	x	SS
	Miramar city	160 - Place	x	x		ACS
	Orange County	050 - County	x	x		SS
	Orlando, FL MSA	380 - MSA/CMSA	x	x	x	SS
	Palm Beach County	050 - County	x	x	x	SS
	Pasco County	050 - County	x	x		SS
	Pembroke Pines city	160 - Place	x	x		ACS
	Pensacola, FL MSA	380 - MSA/CMSA	x	x		SS
	Pinellas County	050 - County	x	x		SS
	Plantation city	160 - Place	x	x		ACS
	Polk County	050 - County	x	x		SS
	Pompano Beach city	160 - Place	x	x		ACS
	Sarasota County	050 - County	x	x		SS
	Sarasota--Bradenton, FL MSA	380 - MSA/CMSA	x	x		SS
	Seminole County	050 - County	x	x		SS
	Sunrise city	160 - Place	x	x		ACS
	Tallahassee, FL MSA	380 - MSA/CMSA	x	x		SS
	Tampa city	160 - Place	x	x		SS
	Tampa city, Hillsborough County pt.	155 - Place-County	x	x		SS

<u>State</u>	<u>Name</u>	<u>Summary Level</u>	<u>2000</u>	<u>2001</u>	<u>Change</u>	<u>Data Set(s)</u>
	Tampa--St. Petersburg--Clearwater, FL MSA	380 - MSA/CMSA	x	x	x	SS
	Volusia County	050 - County	x	x		SS
	West Palm Beach--Boca Raton, FL MSA	380 - MSA/CMSA	x	x	x	SS
GEORGIA	<i>state only</i>	040 - State	x	x	x	SS
	Atlanta city	160 - Place	x	x		SS
	Atlanta city, Fulton County pt.	155 - Place-County	x	x		SS
	Atlanta, GA MSA	380 - MSA/CMSA	x	x	x	SS
	Augusta--Aiken, GA--SC MSA	380 - MSA/CMSA	x	x		SS
	Cobb County	050 - County	x	x		SS
	DeKalb County	050 - County	x	x		SS
	Fulton County	050 - County	x	x		SS
	GA Congressional District 4	500 - Congressional District	x	x		SS
	GA Congressional District 5	500 - Congressional District	x	x		SS
	GA Congressional District 6	500 - Congressional District	x	x		SS
	Gwinnett County	050 - County	x	x		SS
	Macon, GA MSA	380 - MSA/CMSA	x	x		SS
	Savannah, GA MSA	380 - MSA/CMSA	x	x		SS
HAWAII	<i>state only</i>	040 - State	x	x	x	SS
	HI Congressional District 1	500 - Congressional District	x	x		SS
	Honolulu CDP	160 - Place	x	x		SS
	Honolulu CDP, Honolulu County pt.	155 - Place-County	x	x		SS
	Honolulu County	050 - County	x	x		SS
	Honolulu, HI MSA	380 - MSA/CMSA	x	x		SS
IDAHO	<i>state only</i>	040 - State	x	x	x	SS
	Ada County	050 - County	x	x		SS

<u>State</u>	<u>Name</u>	<u>Summary Level</u>	<u>2000</u>	<u>2001</u>	<u>Change</u>	<u>Data Set(s)</u>
	Boise City, ID MSA	380 - MSA/CMSA	x	x		SS
	Davenport--Moline--Rock Island, IA--IL MSA	380 - MSA/CMSA	x	x		SS
ILLINOIS	<i>state only</i>	040 - State	x	x	x	SS
	Chicago city	060 - MCD	x	x	x	SS
	Chicago city	160 - Place	x	x	x	SS
	Chicago city, Cook County pt.	155 - Place-County	x	x	x	SS
	Chicago, IL PMSA	385 - CMSA/PMSA	x	x	x	SS
	Cook County	050 - County	x	x	x	SS
	Davenport--Moline--Rock Island, IA--IL MSA	380 - MSA/CMSA	x	x		SS
	DuPage County	050 - County	x	x		SS
	IL Congressional District 1	500 - Congressional District	x	x		SS
	IL Congressional District 10	500 - Congressional District	x	x		SS
	IL Congressional District 13	500 - Congressional District	x	x		SS
	IL Congressional District 2	500 - Congressional District	x	x		SS
	IL Congressional District 3	500 - Congressional District	x	x		SS
	IL Congressional District 4	500 - Congressional District	x	x		SS
	IL Congressional District 5	500 - Congressional District	x	x		SS
	IL Congressional District 6	500 - Congressional District	x	x		SS
	IL Congressional District 7	500 - Congressional District	x	x		SS
	IL Congressional District 8	500 - Congressional District	x	x		SS
	IL Congressional District 9	500 - Congressional District	x	x		SS
	Kane County	050 - County	x	x		SS
	Lake County	050 - County	x	x	x	ACS & SS
	Madison County	050 - County	x	x		SS
	McHenry County	050 - County	x	x		SS
	Peoria--Pekin, IL MSA	380 - MSA/CMSA	x	x		SS
	Rockford, IL MSA	380 - MSA/CMSA	x	x		SS

<u>State</u>	<u>Name</u>	<u>Summary Level</u>	<u>2000</u>	<u>2001</u>	<u>Change</u>	<u>Data Set(s)</u>
	St. Clair County	050 - County	x	x		SS
	St. Louis, MO--IL MSA	380 - MSA/CMSA	x	x	x	SS
	Vernon township	060 - MCD		x		ACS
	Waukegan city	160 - Place	x	x		ACS
	Waukegan township	060 - MCD		x		ACS
	Will County	050 - County	x	x		SS
	Winnebago County	050 - County	x	x		SS
INDIANA	<i>state only</i>	040 - State	x	x	x	SS
	Allen County	050 - County	x	x		SS
	Fort Wayne, IN MSA	380 - MSA/CMSA	x	x		SS
	IN Congressional District 10	500 - Congressional District	x	x		SS
	Indianapolis city (balance)	160 - Place	x	x		SS
	Indianapolis city (balance), Marion County pt.	155 - Place-County	x	x		SS
	Indianapolis, IN MSA	380 - MSA/CMSA	x	x	x	SS
	Lake County	050 - County	x	x		SS
	Marion County	050 - County	x	x		SS
	South Bend, IN MSA	380 - MSA/CMSA	x	x		SS
	St. Joseph County	050 - County	x	x		SS
IOWA	<i>state only</i>	040 - State	x	x	x	SS
	Black Hawk County	050 - County	x	x		ACS
	Waterloo city	160 - Place	x			ACS
	Des Moines, IA MSA	380 - MSA/CMSA	x	x		SS
	Polk County	050 - County	x	x		SS
KANSAS	<i>state only</i>	040 - State	x	x	x	SS
	Johnson County	050 - County	x	x		SS

<u>State</u>	<u>Name</u>	<u>Summary Level</u>	<u>2000</u>	<u>2001</u>	<u>Change</u>	<u>Data Set(s)</u>
	Kansas City, MO--KS MSA	380 - MSA/CMSA	x	x	x	SS
	KS Congressional District 3	500 - Congressional District	x	x		SS
	Sedgwick County	050 - County	x	x		SS
	Wichita city	060 - MCD	x	x		SS
	Wichita city	160 - Place	x	x		SS
	Wichita city, Sedgwick County pt.	155 - Place-County	x	x		SS
	Wichita, KS MSA	380 - MSA/CMSA	x	x		SS
KENTUCKY	<i>state only</i>	040 - State	x	x	x	SS
	Jefferson County	050 - County	x	x		SS
	KY Congressional District 3	500 - Congressional District	x	x		SS
	Lexington, KY MSA	380 - MSA/CMSA	x	x		SS
LOUISIANA	<i>state only</i>	040 - State	x	x	x	SS
	Baton Rouge, LA MSA	380 - MSA/CMSA	x	x		SS
	East Baton Rouge Parish	050 - County	x	x		SS
	Jefferson Parish	050 - County	x	x		SS
	LA Congressional District 2	500 - Congressional District	x	x		SS
	Lafayette, LA MSA	380 - MSA/CMSA	x	x		SS
	New Orleans city	160 - Place	x	x		SS
	New Orleans city, Orleans Parish pt.	155 - Place-County	x	x		SS
	New Orleans, LA MSA	380 - MSA/CMSA	x	x	x	SS
	Orleans Parish	050 - County	x	x		SS
	Shreveport--Bossier City, LA MSA	380 - MSA/CMSA	x	x		SS
MAINE	<i>state only</i>	040 - State	x	x	x	SS
	Boston--Worcester--Lawrence, MA--NH--ME--CT CMSA	380 - MSA/CMSA	x	x	x	SS

<u>State</u>	<u>Name</u>	<u>Summary Level</u>	<u>2000</u>	<u>2001</u>	<u>Change</u>	<u>Data Set(s)</u>
	Cumberland County	050 - County	x	x		SS
	ME Congressional District 1	500 - Congressional District	x	x		SS
	ME Congressional District 2	500 - Congressional District	x	x		SS
MARYLAND	<i>state only</i>	040 - State	x	x	x	SS
	Anne Arundel County	050 - County	x	x		SS
	Baltimore city	050 - County	x	x		SS
	Baltimore city	160 - Place	x	x		SS
	Baltimore city, Baltimore city pt.	155 - Place-County	x	x		SS
	Baltimore County	050 - County	x	x		SS
	Calvert County	050 - County	x	x		ACS
	MD Congressional District 2	500 - Congressional District	x	x		SS
	MD Congressional District 3	500 - Congressional District	x	x		SS
	MD Congressional District 4	500 - Congressional District	x	x		SS
	MD Congressional District 7	500 - Congressional District	x	x		SS
	MD Congressional District 8	500 - Congressional District	x	x		SS
	Montgomery County	050 - County	x	x		SS
	Prince George's County	050 - County	x	x		SS
MASSACHUSETTS	<i>state only</i>	040 - State	x	x	x	SS
	Boston--Worcester--Lawrence, MA--NH--ME--CT CMSA	380 - MSA/CMSA	x	x	x	SS
	Boston, MA--NH PMSA	385 - CMSA/PMSA	x	x	x	SS
	Boston city	060 - MCD	x	x		SS
	Boston city	160 - Place	x	x		SS
	Boston city, Suffolk County pt.	155 - Place-County	x	x		SS
	Bristol County	050 - County	x	x		SS
	Essex County	050 - County	x	x		SS

<u>State</u>	<u>Name</u>	<u>Summary Level</u>	<u>2000</u>	<u>2001</u>	<u>Change</u>	<u>Data Set(s)</u>
	Hampden County	050 - County	x	x	x	ACS & SS
	Lawrence, MA--NH PMSA	385 - CMSA/PMSA	x	x		SS
	Lowell, MA--NH PMSA	385 - CMSA/PMSA	x	x		SS
	MA Congressional District 1	500 - Congressional District	x	x		SS
	MA Congressional District 10	500 - Congressional District	x	x		SS
	MA Congressional District 2	500 - Congressional District	x	x		SS
	MA Congressional District 3	500 - Congressional District	x	x		SS
	MA Congressional District 4	500 - Congressional District	x	x		SS
	MA Congressional District 5	500 - Congressional District	x	x		SS
	MA Congressional District 6	500 - Congressional District	x	x		SS
	MA Congressional District 7	500 - Congressional District	x	x		SS
	MA Congressional District 8	500 - Congressional District	x	x		SS
	MA Congressional District 9	500 - Congressional District	x	x		SS
	Middlesex County	050 - County	x	x	x	SS
	Norfolk County	050 - County	x	x		SS
	Plymouth County	050 - County	x	x		SS
	Providence--Fall River--Warwick, RI--MA MSA	380 - MSA/CMSA	x	x	x	SS
	Springfield city	060 - MCD	x	x		ACS
	Springfield, MA MSA	380 - MSA/CMSA	x	x		SS
	Suffolk County	050 - County	x	x		SS
	Worcester County	050 - County	x	x		SS
	Worcester, MA--CT PMSA	385 - CMSA/PMSA	x	x		SS
MICHIGAN	<i>state only</i>	040 - State	x	x	x	SS
	Ann Arbor, MI PMSA	385 - CMSA/PMSA	x	x		SS
	Detroit city	060 - MCD	x	x		SS
	Detroit city	160 - Place	x	x		SS
	Detroit city, Wayne County pt.	155 - Place-County	x	x		SS

<u>State</u>	<u>Name</u>	<u>Summary Level</u>	<u>2000</u>	<u>2001</u>	<u>Change</u>	<u>Data Set(s)</u>
	Detroit, MI PMSA	385 - CMSA/PMSA	x	x	x	SS
	Detroit--Ann Arbor--Flint, MI CMSA	380 - MSA/CMSA	x	x	x	SS
	Flint, MI PMSA	385 - CMSA/PMSA	x	x		SS
	Genesee County	050 - County	x	x		SS
	Grand Rapids--Muskegon--Holland, MI MSA	380 - MSA/CMSA	x	x	x	SS
	Ingham County	050 - County	x	x		SS
	Kalamazoo--Battle Creek, MI MSA	380 - MSA/CMSA	x	x		SS
	Kent County	050 - County	x	x		SS
	Lansing--East Lansing, MI MSA	380 - MSA/CMSA	x	x		SS
	Macomb County	050 - County	x	x		SS
	MI Congressional District 10	500 - Congressional District	x	x		SS
	MI Congressional District 11	500 - Congressional District	x	x		SS
	MI Congressional District 12	500 - Congressional District	x	x		SS
	MI Congressional District 13	500 - Congressional District	x	x		SS
	MI Congressional District 14	500 - Congressional District	x	x		SS
	MI Congressional District 15	500 - Congressional District	x	x		SS
	MI Congressional District 16	500 - Congressional District	x	x		SS
	MI Congressional District 6	500 - Congressional District	x	x		SS
	MI Congressional District 9	500 - Congressional District	x	x		SS
	Oakland County	050 - County	x	x	x	SS
	Saginaw--Bay City--Midland, MI MSA	380 - MSA/CMSA	x	x		SS
	Washtenaw County	050 - County	x	x		SS
	Wayne County	050 - County	x	x	x	SS
MINNESOTA	<i>state only</i>	040 - State	x	x	x	SS
	Anoka County	050 - County	x	x		SS
	Dakota County	050 - County	x	x		SS
	Hennepin County	050 - County	x	x	x	SS

<u>State</u>	<u>Name</u>	<u>Summary Level</u>	<u>2000</u>	<u>2001</u>	<u>Change</u>	<u>Data Set(s)</u>
	Minneapolis city	060 - MCD	x	x		SS
	Minneapolis city	160 - Place	x	x		SS
	Minneapolis city, Hennepin County pt.	155 - Place-County	x	x		SS
	MN Congressional District 3	500 - Congressional District	x	x		SS
	MN Congressional District 4	500 - Congressional District	x	x		SS
	MN Congressional District 5	500 - Congressional District	x	x		SS
	MN Congressional District 6	500 - Congressional District	x	x		SS
	Ramsey County	050 - County	x	x		SS
	St. Paul city	060 - MCD	x	x		SS
	St. Paul city	160 - Place	x	x		SS
	St. Paul city, Ramsey County pt.	155 - Place-County	x	x		SS
MISSISSIPPI	<i>state only</i>	040 - State	x	x	x	SS
	Biloxi--Gulfport--Pascagoula, MS MSA	380 - MSA/CMSA	x	x		SS
	Jackson, MS MSA	380 - MSA/CMSA	x	x		SS
	Madison County	050 - County	x	x		ACS
MISSOURI	<i>state only</i>	040 - State	x	x	x	SS
	Jackson County	050 - County	x	x		SS
	Kansas City city	160 - Place	x	x		SS
	Kansas City city, Jackson County pt.	155 - Place-County	x	x		SS
	Kansas City, MO--KS MSA	380 - MSA/CMSA	x	x	x	SS
	MO Congressional District 1	500 - Congressional District	x	x		SS
	MO Congressional District 2	500 - Congressional District	x	x		SS
	MO Congressional District 5	500 - Congressional District	x	x		SS
	Springfield, MO MSA	380 - MSA/CMSA	x	x		SS
	St. Charles County	050 - County	x	x		SS
	St. Louis city	050 - County	x	x		SS

<u>State</u>	<u>Name</u>	<u>Summary Level</u>	<u>2000</u>	<u>2001</u>	<u>Change</u>	<u>Data Set(s)</u>
	St. Louis city	060 - MCD	x	x		SS
	St. Louis city	160 - Place	x	x		SS
	St. Louis city, St. Louis city pt.	155 - Place-County	x	x		SS
	St. Louis County	050 - County	x	x		SS
	St. Louis, MO--IL MSA	380 - MSA/CMSA	x	x	x	SS
MONTANA	<i>state only</i>	040 - State	x	x	x	SS
	Flathead County	050 - County	x	x		ACS
	MT Congressional District (at Large)	500 - Congressional District	x	x		SS
NEBRASKA	<i>state only</i>	040 - State	x	x	x	SS
	Douglas County	050 - County	x	x	x	ACS & SS
	NE Congressional District 2	500 - Congressional District	x	x		SS
	Omaha city	060 - MCD	x	x	x	SS
	Omaha city	160 - Place	x	x		ACS & SS
	Omaha city, Douglas County pt.	155 - Place-County	x	x		SS
NEVADA	<i>state only</i>	040 - State	x	x	x	SS
	Clark County	050 - County	x	x	x	SS
	Las Vegas city	160 - Place	x	x		SS
	Las Vegas city, Clark County pt.	155 - Place-County	x	x		SS
	NV Congressional District 1	500 - Congressional District	x	x		SS
	Reno, NV MSA	380 - MSA/CMSA	x	x		SS
	Washoe County	050 - County	x	x		SS
NEW HAMPSHIRE	<i>state only</i>	040 - State	x	x	x	SS
	Boston--Worcester--Lawrence, MA--NH--ME--CT CMSA	380 - MSA/CMSA	x	x	x	SS

<u>State</u>	<u>Name</u>	<u>Summary Level</u>	<u>2000</u>	<u>2001</u>	<u>Change</u>	<u>Data Set(s)</u>
	Boston, MA--NH PMSA	385 - CMSA/PMSA	x	x	x	SS
	Hillsborough County	050 - County	x	x		SS
	Lawrence, MA--NH PMSA	385 - CMSA/PMSA	x	x		SS
	Lowell, MA--NH PMSA	385 - CMSA/PMSA	x	x		SS
	NH Congressional District 1	500 - Congressional District	x	x		SS
	NH Congressional District 2	500 - Congressional District	x	x		SS
	Rockingham County	050 - County	x	x		SS
NEW JERSEY	<i>state only</i>	040 - State	x	x	x	SS
	Atlantic--Cape May, NJ PMSA	385 - CMSA/PMSA	x	x		SS
	Bergen County	050 - County	x	x		SS
	Bergen--Passaic, NJ PMSA	385 - CMSA/PMSA	x	x	x	SS
	Burlington County	050 - County	x	x		SS
	Camden County	050 - County	x	x		SS
	Essex County	050 - County	x	x		SS
	Hudson County	050 - County	x	x		SS
	Jersey City, NJ PMSA	385 - CMSA/PMSA	x	x		SS
	Mercer County	050 - County	x	x		SS
	Middlesex County	050 - County	x	x		SS
	Middlesex--Somerset--Hunterdon, NJ PMSA	385 - CMSA/PMSA	x	x	x	SS
	Monmouth County	050 - County	x	x		SS
	Monmouth--Ocean, NJ PMSA	385 - CMSA/PMSA	x	x	x	SS
	Morris County	050 - County	x	x		SS
	Newark city	060 - MCD	x			SS
	Newark city	160 - Place	x			SS
	Newark city, Essex County pt.	155 - Place-County	x			SS
	Newark, NJ PMSA	385 - CMSA/PMSA	x	x	x	SS
	NJ Congressional District 1	500 - Congressional District	x	x		SS

<u>State</u>	<u>Name</u>	<u>Summary Level</u>	<u>2000</u>	<u>2001</u>	<u>Change</u>	<u>Data Set(s)</u>
	NJ Congressional District 10	500 - Congressional District	x	x		SS
	NJ Congressional District 11	500 - Congressional District	x	x		SS
	NJ Congressional District 12	500 - Congressional District	x	x		SS
	NJ Congressional District 13	500 - Congressional District	x	x		SS
	NJ Congressional District 2	500 - Congressional District	x	x		SS
	NJ Congressional District 3	500 - Congressional District	x	x		SS
	NJ Congressional District 4	500 - Congressional District	x	x		SS
	NJ Congressional District 5	500 - Congressional District	x	x		SS
	NJ Congressional District 6	500 - Congressional District	x	x		SS
	NJ Congressional District 7	500 - Congressional District	x	x		SS
	NJ Congressional District 8	500 - Congressional District	x	x		SS
	NJ Congressional District 9	500 - Congressional District	x	x		SS
	Ocean County	050 - County	x	x		SS
	Passaic County	050 - County	x	x		SS
	Philadelphia, PA--NJ PMSA	385 - CMSA/PMSA	x	x	x	SS
	Somerset County	050 - County	x	x		SS
	Trenton, NJ PMSA	385 - CMSA/PMSA	x	x		SS
	Union County	050 - County	x	x		SS
NEW MEXICO	<i>state only</i>	040 - State	x	x	x	SS
	Albuquerque city	160 - Place	x	x		SS
	Albuquerque city, Bernalillo County pt.	155 - Place-County	x	x		SS
	Bernalillo County	050 - County	x	x		SS
NEW YORK	<i>state only</i>	040 - State	x	x	x	SS
	Albany County	050 - County	x	x		SS
	Albany--Schenectady--Troy, NY MSA	380 - MSA/CMSA	x	x		SS
	Bronx borough	060 - MCD	x	x	x	SS

<u>State</u>	<u>Name</u>	<u>Summary Level</u>	<u>2000</u>	<u>2001</u>	<u>Change</u>	<u>Data Set(s)</u>
	Bronx County	050 - County	x	x	x	ACS & SS
	Brookhaven town	060 - MCD	x	x		SS
	Brooklyn borough	060 - MCD	x	x	x	SS
	Buffalo city	060 - MCD	x	x		SS
	Buffalo city	160 - Place	x	x		SS
	Buffalo city, Erie County pt.	155 - Place-County	x	x		SS
	Buffalo--Niagara Falls, NY MSA	380 - MSA/CMSA	x	x	x	SS
	Clarkstown town	060 - MCD	x	x		ACS
	Dutchess County	050 - County	x	x		SS
	Dutchess County, NY PMSA	385 - CMSA/PMSA	x	x		SS
	Erie County	050 - County	x	x		SS
	Hempstead town	060 - MCD	x	x		SS
	Islip town	060 - MCD	x	x		SS
	Kings County	050 - County	x	x	x	SS
	Manhattan borough	060 - MCD	x	x	x	SS
	Monroe County	050 - County	x	x		SS
	Nassau County	050 - County	x	x	x	SS
	Nassau--Suffolk, NY PMSA	385 - CMSA/PMSA	x	x	x	SS
	New York city	160 - Place	x	x	x	SS
	New York city, Bronx County pt.	155 - Place-County	x	x	x	SS
	New York city, Kings County pt.	155 - Place-County	x	x	x	SS
	New York city, New York County pt.	155 - Place-County	x	x	x	SS
	New York city, Queens County pt.	155 - Place-County	x	x	x	SS
	New York city, Richmond County pt.	155 - Place-County	x	x		SS
	New York County	050 - County	x	x	x	SS
	New York, NY PMSA	385 - CMSA/PMSA	x	x	x	SS
	NY Congressional District 1	500 - Congressional District	x	x		SS
	NY Congressional District 10	500 - Congressional District	x	x		SS

<u>State</u>	<u>Name</u>	<u>Summary Level</u>	<u>2000</u>	<u>2001</u>	<u>Change</u>	<u>Data Set(s)</u>
	NY Congressional District 11	500 - Congressional District	x	x		SS
	NY Congressional District 12	500 - Congressional District	x	x		SS
	NY Congressional District 13	500 - Congressional District	x	x		SS
	NY Congressional District 14	500 - Congressional District	x	x		SS
	NY Congressional District 15	500 - Congressional District	x	x		SS
	NY Congressional District 16	500 - Congressional District	x	x		SS
	NY Congressional District 17	500 - Congressional District	x	x		SS
	NY Congressional District 18	500 - Congressional District	x	x		SS
	NY Congressional District 19	500 - Congressional District	x	x		SS
	NY Congressional District 2	500 - Congressional District	x	x		SS
	NY Congressional District 21	500 - Congressional District	x	x		SS
	NY Congressional District 28	500 - Congressional District	x	x		SS
	NY Congressional District 29	500 - Congressional District	x	x		SS
	NY Congressional District 3	500 - Congressional District	x	x		SS
	NY Congressional District 30	500 - Congressional District	x	x		SS
	NY Congressional District 4	500 - Congressional District	x	x		SS
	NY Congressional District 5	500 - Congressional District	x	x		SS
	NY Congressional District 6	500 - Congressional District	x	x		SS
	NY Congressional District 7	500 - Congressional District	x	x		SS
	NY Congressional District 8	500 - Congressional District	x	x		SS
	NY Congressional District 9	500 - Congressional District	x	x		SS
	Onondaga County	050 - County	x	x		SS
	Orange County	050 - County	x	x		SS
	Oyster Bay town	060 - MCD	x	x		SS
	Queens borough	060 - MCD	x	x	x	SS
	Queens County	050 - County	x	x	x	SS
	Ramapo town	060 - MCD	x	x		ACS
	Richmond County	050 - County	x	x		SS

<u>State</u>	<u>Name</u>	<u>Summary Level</u>	<u>2000</u>	<u>2001</u>	<u>Change</u>	<u>Data Set(s)</u>
	Rochester, NY MSA	380 - MSA/CMSA	x	x	x	SS
	Rockland County	050 - County	x	x	x	ACS & SS
	Staten Island borough	060 - MCD	x	x		SS
	Suffolk County	050 - County	x	x	x	SS
	Syracuse, NY MSA	380 - MSA/CMSA	x	x		SS
	Utica--Rome, NY MSA	380 - MSA/CMSA	x	x		SS
	Westchester County	050 - County	x	x		SS
NORTH CAROLINA	<i>state only</i>	040 - State	x	x	x	SS
	Charlotte city	160 - Place	x	x		SS
	Charlotte city, Mecklenburg County pt.	155 - Place-County	x	x		SS
	Cumberland County	050 - County	x	x		SS
	Fayetteville, NC MSA	380 - MSA/CMSA	x	x		SS
	Forsyth County	050 - County	x	x		SS
	Greensboro--Winston-Salem--High Point, NC MSA	380 - MSA/CMSA	x	x	x	SS
	Guilford County	050 - County	x	x		SS
	Hickory--Morganton--Lenoir, NC MSA	380 - MSA/CMSA	x	x		SS
	Mecklenburg County	050 - County	x	x		SS
	Raleigh city	160 - Place	x	x		SS
	Raleigh city, Wake County pt.	155 - Place-County	x	x		SS
	Raleigh--Durham--Chapel Hill, NC MSA	380 - MSA/CMSA	x	x	x	SS
	Wake County	050 - County	x	x		SS
NORTH DAKOTA	<i>state only</i>	040 - State	x	x	x	SS
	ND Congressional District (at Large)	500 - Congressional District	x	x		SS
OHIO	<i>state only</i>	040 - State	x	x	x	SS
	Akron, OH PMSA	385 - CMSA/PMSA	x	x		SS

<u>State</u>	<u>Name</u>	<u>Summary Level</u>	<u>2000</u>	<u>2001</u>	<u>Change</u>	<u>Data Set(s)</u>
	Butler County	050 - County	x	x		SS
	Canton--Massillon, OH MSA	380 - MSA/CMSA	x	x		SS
	Cincinnati city	060 - MCD	x	x		SS
	Cincinnati city	160 - Place	x	x		SS
	Cincinnati city, Hamilton County pt.	155 - Place-County	x	x		SS
	Cleveland city	060 - MCD	x	x		SS
	Cleveland city	160 - Place	x	x		SS
	Cleveland city, Cuyahoga County pt.	155 - Place-County	x	x		SS
	Cleveland--Akron, OH CMSA	380 - MSA/CMSA	x	x	x	SS
	Cleveland--Lorain--Elyria, OH PMSA	385 - CMSA/PMSA	x	x	x	SS
	Columbus city	060 - MCD	x	x		SS
	Columbus city	160 - Place	x	x		SS
	Columbus city, Franklin County pt.	155 - Place-County	x	x	x	ACS & SS
	Cuyahoga County	050 - County	x	x	x	SS
	Dayton--Springfield, OH MSA	380 - MSA/CMSA	x	x		SS
	Franklin County	050 - County	x	x	x	ACS & SS
	Hamilton County	050 - County	x	x		SS
	Hamilton--Middletown, OH PMSA	385 - CMSA/PMSA	x	x		SS
	Lorain County	050 - County	x	x		SS
	Lucas County	050 - County	x	x		SS
	Mahoning County	050 - County	x			SS
	Montgomery County	050 - County	x	x		SS
	OH Congressional District 1	500 - Congressional District	x	x		SS
	OH Congressional District 10	500 - Congressional District	x	x		SS
	OH Congressional District 11	500 - Congressional District	x	x		SS
	OH Congressional District 12	500 - Congressional District	x	x		SS
	OH Congressional District 13	500 - Congressional District	x	x		SS
	OH Congressional District 14	500 - Congressional District	x	x		SS

<u>State</u>	<u>Name</u>	<u>Summary Level</u>	<u>2000</u>	<u>2001</u>	<u>Change</u>	<u>Data Set(s)</u>
	OH Congressional District 17	500 - Congressional District	x	x		SS
	OH Congressional District 19	500 - Congressional District	x	x		SS
	OH Congressional District 2	500 - Congressional District	x	x		SS
	OH Congressional District 3	500 - Congressional District	x	x		SS
	Stark County	050 - County	x	x		SS
	Summit County	050 - County	x	x		SS
	Toledo city	060 - MCD	x	x		SS
	Toledo city	160 - Place	x	x		SS
	Toledo city, Lucas County pt.	155 - Place-County	x	x		SS
	Toledo, OH MSA	380 - MSA/CMSA	x	x		SS
	Youngstown--Warren, OH MSA	380 - MSA/CMSA	x	x		SS
OKLAHOMA	<i>state only</i>	040 - State	x	x	x	SS
	OK Congressional District 1	500 - Congressional District	x	x		SS
	Oklahoma City city	160 - Place	x	x		SS
	Oklahoma City city, Oklahoma County pt.	155 - Place-County	x	x		SS
	Oklahoma City, OK MSA	380 - MSA/CMSA	x	x	x	SS
	Oklahoma County	050 - County	x	x		SS
	Tulsa city	160 - Place	x	x		SS
	Tulsa city, Tulsa County pt.	155 - Place-County	x	x		SS
	Tulsa County	050 - County	x	x		SS
	Tulsa, OK MSA	380 - MSA/CMSA	x	x		SS
OREGON	<i>state only</i>	040 - State	x	x	x	SS
	Clackamas County	050 - County	x	x		SS
	Eugene--Springfield, OR MSA	380 - MSA/CMSA	x	x		SS
	Gresham city	160 - Place	x	x		ACS
	Lane County	050 - County	x	x		SS

<u>State</u>	<u>Name</u>	<u>Summary Level</u>	<u>2000</u>	<u>2001</u>	<u>Change</u>	<u>Data Set(s)</u>
	Marion County	050 - County	x	x		SS
	Multnomah County	050 - County	x	x	x	ACS & SS
	OR Congressional District 3	500 - Congressional District	x	x		SS
	Portland city	160 - Place	x	x		SS
	Portland city, Multnomah County pt.	155 - Place-County	x	x	x	ACS & SS
	Salem, OR PMSA	385 - CMSA/PMSA	x	x		SS
	Washington County	050 - County	x	x		SS
PENNSLYVANIA	<i>state only</i>	040 - State	x	x	x	SS
	Allegheny County	050 - County	x	x	x	SS
	Allentown--Bethlehem--Easton, PA MSA	380 - MSA/CMSA	x	x		SS
	Berks County	050 - County	x	x		SS
	Bucks County	050 - County	x	x		SS
	Chester County	050 - County	x	x		SS
	Delaware County	050 - County	x	x		SS
	Erie County	050 - County	x	x		SS
	Erie, PA MSA	380 - MSA/CMSA	x	x		SS
	Harrisburg--Lebanon--Carlisle, PA MSA	380 - MSA/CMSA	x	x		SS
	Lancaster County	050 - County	x	x		SS
	Lancaster, PA MSA	380 - MSA/CMSA	x	x		SS
	Lehigh County	050 - County	x	x		SS
	Luzerne County	050 - County	x	x		SS
	Montgomery County	050 - County	x	x		SS
	Northampton County	050 - County	x	x		SS
	PA Congressional District 1	500 - Congressional District	x	x		SS
	PA Congressional District 13	500 - Congressional District	x	x		SS
	PA Congressional District 14	500 - Congressional District	x	x		SS
	PA Congressional District 15	500 - Congressional District	x	x		SS

<u>State</u>	<u>Name</u>	<u>Summary Level</u>	<u>2000</u>	<u>2001</u>	<u>Change</u>	<u>Data Set(s)</u>
	PA Congressional District 16	500 - Congressional District	x	x		SS
	PA Congressional District 17	500 - Congressional District	x	x		SS
	PA Congressional District 18	500 - Congressional District	x	x		SS
	PA Congressional District 2	500 - Congressional District	x	x		SS
	PA Congressional District 3	500 - Congressional District	x	x		SS
	PA Congressional District 7	500 - Congressional District	x	x		SS
	PA Congressional District 8	500 - Congressional District	x	x		SS
	Philadelphia city	060 - MCD	x	x	x	SS
	Philadelphia city	160 - Place	x	x	x	SS
	Philadelphia city, Philadelphia County pt.	155 - Place-County	x	x	x	SS
	Philadelphia County	050 - County	x	x	x	SS
	Philadelphia, PA--NJ PMSA	385 - CMSA/PMSA	x	x	x	SS
	Pittsburgh city	060 - MCD	x	x		SS
	Pittsburgh city	160 - Place	x	x		SS
	Pittsburgh city, Allegheny County pt.	155 - Place-County	x	x		SS
	Pittsburgh, PA MSA	380 - MSA/CMSA	x	x	x	SS
	Reading, PA MSA	380 - MSA/CMSA	x	x		SS
	Schuylkill County	050 - County	x	x		ACS
	Scranton--Wilkes-Barre--Hazleton, PA MSA	380 - MSA/CMSA	x	x		SS
	Westmoreland County	050 - County	x	x		SS
	York County	050 - County	x	x		SS
	York, PA MSA	380 - MSA/CMSA	x	x		SS
RHODE ISLAND	<i>state only</i>	040 - State	x	x	x	SS
	New London--Norwich, CT--RI MSA	380 - MSA/CMSA	x	x		SS
	Providence County	050 - County	x	x		SS
	Providence--Fall River--Warwick, RI--MA MSA	380 - MSA/CMSA	x	x	x	SS
	RI Congressional District 1	500 - Congressional District	x	x		SS

<u>State</u>	<u>Name</u>	<u>Summary Level</u>	<u>2000</u>	<u>2001</u>	<u>Change</u>	<u>Data Set(s)</u>
	RI Congressional District 2	500 - Congressional District	x	x		SS
SOUTH CAROLINA	<i>state only</i>	040 - State	x	x	x	SS
	Augusta--Aiken, GA--SC MSA	380 - MSA/CMSA	x	x		SS
	Charleston County	050 - County	x	x		SS
	Charleston--North Charleston, SC MSA	380 - MSA/CMSA	x	x		SS
	Columbia, SC MSA	380 - MSA/CMSA	x	x		SS
	Greenville County	050 - County	x	x		SS
	Greenville--Spartanburg--Anderson, SC MSA	380 - MSA/CMSA	x	x		SS
	Richland County	050 - County	x	x		SS
SOUTH DAKOTA	<i>state only</i>	040 - State	x	x	x	SS
	SD Congressional District (at Large)	500 - Congressional District	x	x		SS
TENNESSEE	<i>state only</i>	040 - State	x	x	x	SS
	Davidson County	050 - County	x	x		SS
	Hamilton County	050 - County	x	x		SS
	Johnson City--Kingsport--Bristol, TN--VA MSA	380 - MSA/CMSA	x	x		SS
	Knox County	050 - County	x	x		SS
	Knoxville, TN MSA	380 - MSA/CMSA	x	x		SS
	Memphis city	160 - Place	x	x		SS
	Memphis city, Shelby County pt.	155 - Place-County	x	x		SS
	Nashville, TN MSA	380 - MSA/CMSA	x	x	x	SS
	Nashville-Davidson (balance)	160 - Place	x	x		SS
	Nashville-Davidson (balance), Davidson County pt.	155 - Place-County	x	x		SS
	Sevier County	050 - County	x	x		ACS
	Shelby County	050 - County	x	x		SS
	TN Congressional District 5	500 - Congressional District	x	x		SS

<u>State</u>	<u>Name</u>	<u>Summary Level</u>	<u>2000</u>	<u>2001</u>	<u>Change</u>	<u>Data Set(s)</u>
	TN Congressional District 9	500 - Congressional District	x	x		SS
TEXAS	<i>state only</i>	040 - State	x	x	x	SS
	Arlington city	160 - Place	x	x		SS
	Arlington city, Tarrant County pt.	155 - Place-County	x	x		SS
	Austin city	160 - Place	x	x		SS
	Austin city, Travis County pt.	155 - Place-County	x	x		SS
	Austin--San Marcos, TX MSA	380 - MSA/CMSA	x	x	x	SS
	Baytown city, Harris County pt.	155 - Place-County		x		ACS
	Beaumont--Port Arthur, TX MSA	380 - MSA/CMSA	x	x		SS
	Bexar County	050 - County	x	x	x	SS
	Brownsville--Harlingen--San Benito, TX MSA	380 - MSA/CMSA	x	x		SS
	Cameron County	050 - County	x	x		SS
	Collin County	050 - County	x	x		SS
	Corpus Christi city, Nueces County pt.	155 - Place-County	x	x		SS
	Corpus Christi, TX MSA	380 - MSA/CMSA	x	x		SS
	Dallas city	160 - Place	x	x	x	SS
	Dallas city, Dallas County pt.	155 - Place-County	x	x	x	SS
	Dallas County	050 - County	x	x	x	SS
	Dallas, TX PMSA	385 - CMSA/PMSA	x	x	x	SS
	Dallas--Fort Worth, TX CMSA	380 - MSA/CMSA	x	x	x	SS
	Denton County	050 - County	x	x		SS
	El Paso city	160 - Place	x	x		SS
	El Paso city, El Paso County pt.	155 - Place-County	x	x		SS
	El Paso County	050 - County	x	x		SS
	El Paso, TX MSA	380 - MSA/CMSA	x	x		SS
	Fort Bend County	050 - County	x	x	x	ACS & SS
	Fort Worth city	160 - Place	x	x		SS

<u>State</u>	<u>Name</u>	<u>Summary Level</u>	<u>2000</u>	<u>2001</u>	<u>Change</u>	<u>Data Set(s)</u>
	Fort Worth city, Tarrant County pt.	155 - Place-County	x	x		SS
	Fort Worth--Arlington, TX PMSA	385 - CMSA/PMSA	x	x	x	SS
	Harris County	050 - County	x	x	x	ACS & SS
	Hidalgo County	050 - County	x	x		SS
	Houston city	160 - Place	x	x	x	ACS & SS
	Houston city, Harris County pt.	155 - Place-County	x	x	x	ACS & SS
	Houston, TX PMSA	385 - CMSA/PMSA	x	x	x	SS
	Killeen--Temple, TX MSA	380 - MSA/CMSA	x	x		SS
	McAllen--Edinburg--Mission, TX MSA	380 - MSA/CMSA	x	x		SS
	Montgomery County	050 - County	x	x		SS
	Nueces County	050 - County	x	x		SS
	Pasadena city	160 - Place	x	x		ACS
	San Antonio city	160 - Place	x	x	x	SS
	San Antonio city, Bexar County pt.	155 - Place-County	x	x	x	SS
	San Antonio, TX MSA	380 - MSA/CMSA	x	x	x	SS
	Sugar Land city	160 - Place	x			ACS
	Tarrant County	050 - County	x	x	x	SS
	Travis County	050 - County	x	x		SS
	TX Congressional District 10	500 - Congressional District	x	x		SS
	TX Congressional District 12	500 - Congressional District	x	x		SS
	TX Congressional District 16	500 - Congressional District	x	x		SS
	TX Congressional District 18	500 - Congressional District	x	x		SS
	TX Congressional District 20	500 - Congressional District	x	x		SS
	TX Congressional District 25	500 - Congressional District	x	x		SS
	TX Congressional District 26	500 - Congressional District	x	x		SS
	TX Congressional District 29	500 - Congressional District	x	x		SS
	TX Congressional District 3	500 - Congressional District	x	x		SS
	TX Congressional District 30	500 - Congressional District	x	x		SS

<u>State</u>	<u>Name</u>	<u>Summary Level</u>	<u>2000</u>	<u>2001</u>	<u>Change</u>	<u>Data Set(s)</u>
	TX Congressional District 6	500 - Congressional District	x	x		SS
	TX Congressional District 7	500 - Congressional District	x	x		SS
	TX Congressional District 9	500 - Congressional District	x	x		SS
UTAH	<i>state only</i>	040 - State	x	x	x	SS
	Provo--Orem, UT MSA	380 - MSA/CMSA	x	x		SS
	Salt Lake City--Ogden, UT MSA	380 - MSA/CMSA	x	x	x	SS
	Salt Lake County	050 - County	x	x		SS
	UT Congressional District 2	500 - Congressional District	x	x		SS
	Utah County	050 - County	x	x		SS
VERMONT	<i>state only</i>	040 - State	x	x	x	SS
	VT Congressional District (at Large)	500 - Congressional District	x	x		SS
VIRGINIA	<i>state only</i>	040 - State	x	x	x	SS
	Chesterfield County	050 - County	x	x		SS
	Fairfax County	050 - County	x	x		SS
	Henrico County	050 - County	x	x		SS
	Johnson City--Kingsport--Bristol, TN--VA MSA	380 - MSA/CMSA	x	x		SS
	Prince William County	050 - County	x	x		SS
	Richmond--Petersburg, VA MSA	380 - MSA/CMSA	x	x		SS
	VA Congressional District 11	500 - Congressional District	x	x		SS
	VA Congressional District 2	500 - Congressional District	x	x		SS
	VA Congressional District 8	500 - Congressional District	x	x		SS
	Virginia Beach city	050 - County	x	x		SS
	Virginia Beach city	160 - Place	x	x		SS
	Virginia Beach city, Virginia Beach city pt.	155 - Place-County	x	x		SS

<u>State</u>	<u>Name</u>	<u>Summary Level</u>	<u>2000</u>	<u>2001</u>	<u>Change</u>	<u>Data Set(s)</u>
WASHINGTON	<i>state only</i>	040 - State	x	x	x	SS
	Clark County	050 - County	x	x		SS
	King County	050 - County	x	x	x	SS
	Pierce County	050 - County	x	x		SS
	Seattle city	160 - Place	x	x		SS
	Seattle city, King County pt.	155 - Place-County	x	x		SS
	Seattle--Bellevue--Everett, WA PMSA	385 - CMSA/PMSA	x	x	x	SS
	Snohomish County	050 - County	x	x		SS
	Spokane County	050 - County	x	x		SS
	Spokane, WA MSA	380 - MSA/CMSA	x	x		SS
	Tacoma, WA PMSA	385 - CMSA/PMSA	x	x		SS
	WA Congressional District 7	500 - Congressional District	x	x		SS
	WA Congressional District 8	500 - Congressional District	x	x		SS
	Yakima County	050 - County	x	x		ACS
	Yakima city	160 - Place	x	x		ACS
WEST VIRGINIA	<i>state only</i>	040 - State	x	x	x	SS
WISCONSIN	<i>state only</i>	040 - State	x	x	x	SS
	Appleton--Oshkosh--Neenah, WI MSA	380 - MSA/CMSA	x	x		SS
	Dane County	050 - County	x	x		SS
	Madison, WI MSA	380 - MSA/CMSA	x	x		SS
	Milwaukee city	060 - MCD	x	x		SS
	Milwaukee city	160 - Place	x	x		SS
	Milwaukee city, Milwaukee County pt.	155 - Place-County	x	x		SS
	Milwaukee County	050 - County	x	x		SS
	Milwaukee--Waukesha, WI PMSA	385 - CMSA/PMSA	x	x	x	SS
	Waukesha County	050 - County	x	x		SS

<u>State</u>	<u>Name</u>	<u>Summary Level</u>	<u>2000</u>	<u>2001</u>	<u>Change</u>	<u>Data Set(s)</u>
	WI Congressional District 4	500 - Congressional District	x	x		SS
	WI Congressional District 5	500 - Congressional District	x	x		SS
WYOMING	<i>state only</i>	040 - State	x	x	x	SS
	WY Congressional District (at Large)	500 - Congressional District	x	x		SS
Multi-state areas	Augusta--Aiken, GA--SC MSA	380 - MSA/CMSA	x	x		SS
	Boston, MA--NH PMSA	385 - CMSA/PMSA	x	x	x	SS
	Boston--Worcester--Lawrence, MA--NH--ME--CT CMSA	380 - MSA/CMSA	x	x	x	SS
	Davenport--Moline--Rock Island, IA--IL MSA	380 - MSA/CMSA	x	x		SS
	Johnson City--Kingsport--Bristol, TN--VA MSA	380 - MSA/CMSA	x	x		SS
	Kansas City, MO--KS MSA	380 - MSA/CMSA	x	x	x	SS
	Lawrence, MA--NH PMSA	385 - CMSA/PMSA	x	x		SS
	Lowell, MA--NH PMSA	385 - CMSA/PMSA	x	x		SS
	New London--Norwich, CT--RI MSA	380 - MSA/CMSA	x	x		SS
	Philadelphia, PA--NJ PMSA	385 - CMSA/PMSA	x	x	x	SS
	Providence--Fall River--Warwick, RI--MA MSA	380 - MSA/CMSA	x	x	x	SS
	St. Louis, MO--IL MSA	380 - MSA/CMSA	x	x	x	SS
	Worcester, MA--CT PMSA	385 - CMSA/PMSA	x	x		SS

Equivalent Geographies in the Supplementary Surveys

Many geographic areas appear in the Supplementary Surveys under a variety of geographic summary levels. These “equivalent” geographies are grouped together in the list below.

<u>State</u>	<u>Name</u>	<u>Summary Level</u>
ALASKA	Alaska	040 - State
	AK Congressional District (at Large)	500 - Cong. District
	Anchorage Municipality	050 - County
	Anchorage municipality	160 - Place
	Anchorage municipality, Anchorage Municipality pt. Anchorage, AK MSA	155 - Place-County 380 - MSA/CMSA
ARIZONA	Mesa city	160 - Place
	Mesa city, Maricopa County pt.	155 - Place-County
	Phoenix city	160 - Place
	Phoenix city, Maricopa County pt.	155 - Place-County
	Pima County	050 - County
	Tucson, AZ MSA	380 - MSA/CMSA
	Tucson city	160 - Place
	Tucson city, Pima County pt.	155 - Place-County
CALIFORNIA	Anaheim city	160 - Place
	Anaheim city, Orange County pt.	155 - Place-County
	Fresno city	160 - Place
	Fresno city, Fresno County pt.	155 - Place-County

<u>State</u>	<u>Name</u>	<u>Summary Level</u>
	Kern County	050 - County
	Bakersfield, CA MSA	380 - MSA/CMSA
	Long Beach city	160 - Place
	Long Beach city, Los Angeles County pt.	155 - Place-County
	Los Angeles County	050 - County
	Los Angeles--Long Beach, CA PMSA	385 - CMSA/PMSA
	Los Angeles city	160 - Place
	Los Angeles city, Los Angeles County pt.	155 - Place-County
	Monterey County	050 - County
	Salinas, CA MSA	380 - MSA/CMSA
	Oakland city	160 - Place
	Oakland city, Alameda County pt.	155 - Place-County
	Orange County	050 - County
	Orange County, CA PMSA	385 - CMSA/PMSA
	Riverside city	160 - Place
	Riverside city, Riverside County pt.	155 - Place-County
	Sacramento city	160 - Place
	Sacramento city, Sacramento County pt.	155 - Place-County
	San Diego city	160 - Place
	San Diego city, San Diego County pt.	155 - Place-County
	San Diego County	050 - County
	San Diego, CA MSA	380 - MSA/CMSA
	San Joaquin County	050 - County
	Stockton--Lodi, CA MSA	380 - MSA/CMSA

<u>State</u>	<u>Name</u>	<u>Summary Level</u>
	San Jose city	160 - Place
	San Jose city, Santa Clara County pt.	155 - Place-County
	San Francisco County	050 - County
	San Francisco city	160 - Place
	San Francisco city, San Francisco County pt	155 - Place-County
	Santa Barbara County	050 - County
	Santa Barbara--Santa Maria--Lompoc, CA MSA	380 - MSA/CMSA
	Santa Clara County	050 - County
	San Jose, CA PMSA	385 - CMSA/PMSA
	Santa Ana city	160 - Place
	Santa Ana city, Orange County pt.	155 - Place-County
	Sonoma County	050 - County
	Santa Rosa, CA PMSA	385 - CMSA/PMSA
	Stanislaus County	050 - County
	Modesto, CA MSA	380 - MSA/CMSA
	Stockton city	160 - Place
	Stockton city, San Joaquin County pt.	155 - Place-County
	Tulare County	050 - County
	Visalia--Tulare--Porterville, CA MSA	380 - MSA/CMSA
	Ventura County	050 - County
	Ventura, CA PMSA	385 - CMSA/PMSA
COLORADO	Boulder County	050 - County
	Boulder--Longmont, CO PMSA	385 - CMSA/PMSA

<u>State</u>	<u>Name</u>	<u>Summary Level</u>
	Colorado Springs city	160 - Place
	Colorado Springs city, El Paso County pt.	155 - Place-County
	Denver city	160 - Place
	Denver city, Denver County pt.	155 - Place-County
	Denver County	050 - County
	El Paso County	050 - County
	Colorado Springs, CO MSA	380 - MSA/CMSA
DELAWARE	Delaware	040 - State
	DE Congressional District (at Large)	500 - Cong. District
DISTRICT OF COLUMBIA	DC Delegate District (at Large)	500 - Cong. District
	District of Columbia	050 - County
	Washington city	160 - Place
	Washington city, District of Columbia pt.	155 - Place-County
FLORIDA	Brevard County	050 - County
	Melbourne--Titusville--Palm Bay, FL MSA	380 - MSA/CMSA
	Broward County	050 - County
	Fort Lauderdale, FL PMSA	385 - CMSA/PMSA
	Jacksonville city	160 - Place
	Jacksonville city, Duval County pt.	155 - Place-County
	Lee County	050 - County
	Fort Myers--Cape Coral, FL MSA	380 - MSA/CMSA
	Miami city	160 - Place
	Miami city, Miami-Dade County pt.	155 - Place-County

<u>State</u>	<u>Name</u>	<u>Summary Level</u>
	Miami-Dade County	050 - County
	Miami, FL PMSA	385 - CMSA/PMSA
	Palm Beach County	050 - County
	West Palm Beach--Boca Raton, FL MSA	380 - MSA/CMSA
	Polk County	050 - County
	Lakeland--Winter Haven, FL MSA	380 - MSA/CMSA
	St. Petersburg city	160 - Place
	St. Petersburg city, Pinellas County pt.	155 - Place-County
	Tampa city	160 - Place
	Tampa city, Hillsborough County pt.	155 - Place-County
HAWAII	Honolulu CDP	160 - Place
	Honolulu CDP, Honolulu County pt.	155 - Place-County
	Honolulu County	050 - County
	Honolulu, HI MSA	380 - MSA/CMSA
ILLINOIS	Chicago city	060 - MCD
	Chicago city	160 - Place
	Chicago city, Cook County pt.	155 - Place-County
INDIANA	Indianapolis city (balance)	160 - Place
	Indianapolis city (balance), Marion County pt.	155 - Place-County
	St. Joseph County	050 - County
	South Bend, IN MSA	380 - MSA/CMSA
KANSAS	Wichita city	060 - MCD
	Wichita city	160 - Place
	Wichita city, Sedgwick County pt.	155 - Place-County

<u>State</u>	<u>Name</u>	<u>Summary Level</u>
LOUISIANA	New Orleans city	160 - Place
	New Orleans city, Orleans Parish pt.	155 - Place-County
	Orleans Parish	050 - County
MARYLAND	Baltimore city	050 - County
	Baltimore city	160 - Place
	Baltimore city, Baltimore city pt.	155 - Place-County
MASSACHUSETTS	Boston city	060 - MCD
	Boston city	160 - Place
	Boston city, Suffolk County pt.	155 - Place-County
MICHIGAN	Detroit city	060 - MCD
	Detroit city	160 - Place
	Detroit city, Wayne County pt.	155 - Place-County
	Genesee County	050 - County
	Flint, MI PMSA	385 - CMSA/PMSA
MINNESOTA	Minneapolis city	060 - MCD
	Minneapolis city	160 - Place
	Minneapolis city, Hennepin County pt.	155 - Place-County
	St. Paul city	060 - MCD
	St. Paul city	160 - Place
	St. Paul city, Ramsey County pt.	155 - Place-County
MISSOURI	St. Louis city	050 - County
	St. Louis city	060 - MCD
	St. Louis city	160 - Place
	St. Louis city, St. Louis city pt.	155 - Place-County

<u>State</u>	<u>Name</u>	<u>Summary Level</u>
MONTANA	Montana	040 - State
	MT Congressional District (at Large)	500 - Cong. District
NEBRASKA	Omaha city	060 - MCD
	Omaha city	160 - Place
	Omaha city, Douglas County pt.	155 - Place-County
NEVADA	Las Vegas city	160 - Place
	Las Vegas city, Clark County pt.	155 - Place-County
	Washoe County	050 - County
	Reno, NV MSA	380 - MSA/CMSA
NEW JERSEY	Mercer County	050 - County
	Trenton, NJ PMSA	385 - CMSA/PMSA
	Hudson County	050 - County
	Jersey city, NJ PMSA	385 - CMSA/PMSA
	Newark city	060 - MCD
	Newark city, Essex County pt.	155 - Place-County
NEW MEXICO	Albuquerque city	160 - Place
	Albuquerque city, Bernalillo County pt.	155 - Place-County
NEW YORK	Bronx borough	060 - MCD
	Bronx County	050 - County
	New York city, Bronx County pt.	155 - Place-County
	Brooklyn borough	060 - MCD
	Kings County	050 - County
	New York city, Kings County pt.	155 - Place-County

<u>State</u>	<u>Name</u>	<u>Summary Level</u>
	Buffalo city	060 - MCD
	Buffalo city	160 - Place
	Buffalo city, Erie County pt.	155 - Place-County
	Dutchess County	050 - County
	Dutchess County, NY PMSA	385 - CMSA/PMSA
	Manhattan borough	060 - MCD
	New York city, New York County pt.	155 - Place-County
	New York County	050 - County
	New York city, Queens County pt.	155 - Place-County
	Queens borough	060 - MCD
	Queens County	050 - County
	New York city, Richmond County pt.	155 - Place-County
	Richmond County	050 - County
	Staten Island borough	060 - MCD
NORTH CAROLINA	Charlotte city	160 - Place
	Charlotte city, Mecklenburg County pt.	155 - Place-County
	Cumberland County	050 - County
	Fayetteville, NC MSA	380 - MSA/CMSA
	Raleigh city	160 - Place
	Raleigh city, Wake County pt.	155 - Place-County
NORTH DAKOTA	North Dakota	040 - State
	ND Congressional District (at Large)	500 - Cong. District
OHIO	Butler County	050 - County
	Hamilton--Middletown, OH PMSA	385 - CMSA/PMSA

<u>State</u>	<u>Name</u>	<u>Summary Level</u>
	Cincinnati city	060 - MCD
	Cincinnati city	160 - Place
	Cincinnati city, Hamilton County pt.	155 - Place-County
	Cleveland city	060 - MCD
	Cleveland city	160 - Place
	Cleveland city, Cuyahoga County pt.	155 - Place-County
	Columbus city	060 - MCD
	Columbus city, Franklin County pt.	155 - Place-County
	Toledo city	060 - MCD
	Toledo city	160 - Place
	Toledo city, Lucas County pt.	155 - Place-County
OREGON	Lane County	050 - County
	Eugene--Springfield, OR MSA	380 - MSA/CMSA
PENNSYLVANIA	Berks County	050 - County
	Reading, PA MSA	380 - MSA/CMSA
	Erie County	050 - County
	Erie, PA MSA	380 - MSA/CMSA
	Lancaster County	050 - County
	Lancaster, PA MSA	380 - MSA/CMSA
	Philadelphia city	060 - MCD
	Philadelphia city	160 - Place
	Philadelphia city, Philadelphia County pt.	155 - Place-County
	Philadelphia County	050 - County
	Pittsburgh city	060 - MCD
	Pittsburgh city	160 - Place

<u>State</u>	<u>Name</u>	<u>Summary Level</u>
	Pittsburgh city, Allegheny County pt.	155 - Place-County
	York County	050 - County
	York, PA MSA	380 - MSA/CMSA
SOUTH DAKOTA	South Dakota	040 - State
	SD Congressional District (at Large)	500 - Cong. District
TENNESSEE	Memphis city	160 - Place
	Memphis city, Shelby County pt.	155 - Place-County
	Nashville-Davidson (balance)	160 - Place
	Nashville-Davidson (balance), Davidson County pt.	155 - Place-County
TEXAS	Arlington city	160 - Place
	Arlington city, Tarrant County pt.	155 - Place-County
	Corpus Christi city	160 - Place
	Corpus Christi city, Nueces County pt.	155 - Place-County
	Cameron County	050 - County
	Brownsville--Harlingen--San Benito, TX MSA	380 - MSA/CMSA
	El Paso city	160 - Place
	El Paso city, El Paso County pt.	155 - Place-County
	El Paso County	050 - County
	El Paso, TX MSA	380 - MSA/CMSA
	Fort Worth city	160 - Place
	Fort Worth city, Tarrant County pt.	155 - Place-County

<u>State</u>	<u>Name</u>	<u>Summary Level</u>
	Galveston County	050 - County
	Galveston–Texas City, TX PMSA	385 - CMSA/PMSA
	Hidalgo County	050 - County
	McAllen--Edinburg–Mission, TX MSA	380 - MSA/CMSA
	San Antonio city	160 - Place
	San Antonio city, Bexar County pt.	155 - Place-County
UTAH	Utah County	050 - County
	Provo--Orem, UT MSA	380 - MSA/CMSA
VERMONT	Vermont	040 - State
	VT Congressional District (at Large)	500 - Cong. District
VIRGINIA	Virginia Beach city	050 - County
	Virginia Beach city	160 - Place
	Virginia Beach city, Virginia Beach city pt.	155 - Place-County
WASHINGTON	Pierce County	050 - County
	Tacoma, WA PMSA	385 - CMSA/PMSA
	Seattle city	160 - Place
	Seattle city, King County pt.	155 - Place-County
	Spokane County	050 - County
	Spokane, WA MSA	380 - MSA/CMSA

<u>State</u>	<u>Name</u>	<u>Summary Level</u>
WISCONSIN	Dane County	050 - County
	Madison, WI MSA	380 - MSA/CMSA
	Milwaukee city	060 - MCD
	Milwaukee city	160 - Place
WYOMING	Milwaukee city, Milwaukee County pt.	155 - Place-County
	Wyoming	040 - State
	WY Congressional District (at Large)	500 - Cong. District

Glossary of Geographic Terms

Congressional district – An area established by State officials or the courts for the purpose of electing a person to the U.S. House of Representatives. Within each State, these areas must contain, as nearly as possible, an equal number of inhabitants. The number of Congressional districts in each State may change after each decennial census, and the boundaries may be changed more than once during a decade.

Consolidated metropolitan statistical area (CMSA) – A geographic entity defined by the Federal Office of Management and Budget (OMB) for use by Federal statistical agencies. An area becomes a CMSA if it meets the requirements to qualify as a metropolitan statistical area (MSA), has a population of 1,000,000 or more, if component parts are recognized as primary statistical metropolitan areas (PMSAs), and local opinion favors the designation. Whole counties are components of CMSAs outside of New England, where they are composed of cities and towns instead.

County – A type of governmental unit that is the primary legal subdivision of every State except Alaska and Louisiana; also, a type of functioning MCD found in American Samoa.

County subdivision – A legal or statistical division of a county recognized by the Census Bureau for data presentation.

Metropolitan statistical area (MSA) – A geographic entity, defined by the Federal OMB for use by Federal statistical agencies, based on the concept of a core area with a large population nucleus, plus adjacent communities having a high degree of economic and social integration with that core. Qualification of an MSA requires the presence of a city with 50,000 or more inhabitants, or the presence of a UA and a total population of at least 100,000 (75,000 in New England). The county or counties containing the largest city and surrounding densely settled territory are central counties of the MSA. Additional outlying counties qualify to be included in the MSA by meeting certain other criteria of metropolitan character, such as a specified minimum population density or percentage of the population that is urban. MSAs in New England are defined in terms of cities and towns, following rules concerning commuting and population density.

Minor Civil Division (MCD) – A type of governmental unit that is the primary legal subdivision of a county in 28 States, created to govern or administer an area rather than a specific population. The several types of MCDs are identified in terms such as town, township, and district, and include both functioning and nonfunctioning governmental units. Many MCDs represent local, general-purpose governmental units, which makes them required areas for presentation of decennial census data. *See also county subdivision.*

Place – A concentration of population either legally bounded as an incorporated place, or identified by the Census Bureau as a Census designated place.

Incorporated Place – All incorporated places recognized legally as in existence under the laws of their respective states as cities, boroughs, towns, and villages, with the following exceptions: the towns in the New England states, New York, and Wisconsin, and the boroughs in New York are recognized as minor civil divisions for census purposes; the boroughs in Alaska are county equivalents.

Census Designated Place (CDP) – A statistical entity, defined for each decennial census according to Census Bureau guidelines, comprising a densely settled concentration of population that is not within an incorporated place, but is locally identified by a name. CDPs are delineated cooperatively by state and local officials and the Census Bureau, following Census Bureau guidelines. These entities were called unincorporated places for the 1940 through 1970 censuses.

Primary metropolitan statistical area (PMSA) – A geographic entity defined by the Federal OMB for use by Federal statistical agencies. If an area meets the requirements to qualify as a metropolitan statistical area (MSA) and has a population of one million or more, two or more PMSAs may be defined within it if statistical criteria are met and local opinion is in favor. A PMSA consists of a large urbanized county, or a cluster of such counties (cities and towns in New England) that have substantial commuting interchange. When one or more PMSAs have been recognized, the balance of the original, larger area becomes an additional PMSA; the larger area of which they are components then is designated a consolidated metropolitan statistical area (CMSA).

State – A type of governmental unit that is the primary legal subdivision of the United States; a functioning county equivalent in Palau, where it also serves as a nonfunctioning MCD.

For more information about the Census Bureau's statistical areas, geographic concepts or terminology, please reference the Geographic Areas Reference Manual (<http://www.census.gov/geo/www/garm.html>), published by the U.S. Census Bureau.