

**APS ENGINEERING SUPPORT DIVISION**  
**W. RUZICKA**  
**DIVISION DIRECTOR**

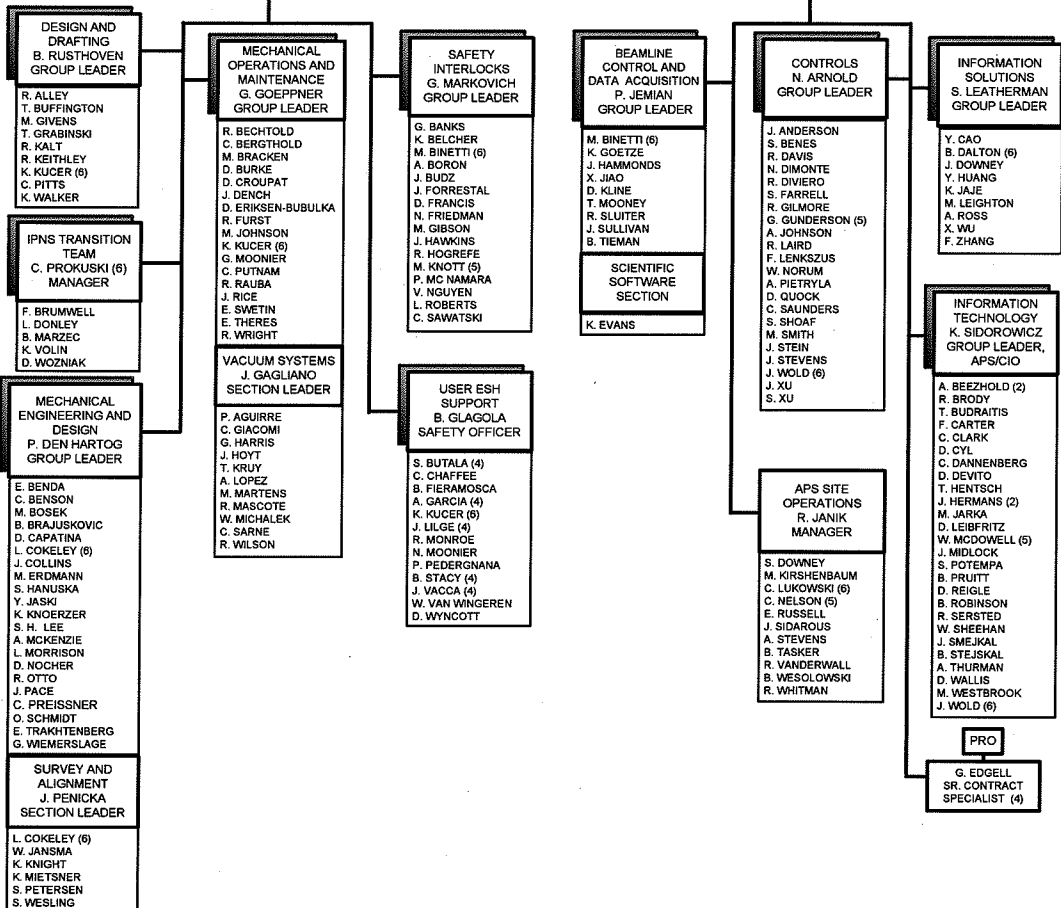
ASSISTANT DIVISION DIRECTOR	J. HLAVACIK	ESH COORDINATOR	E. CHANG
EXECUTIVE ASSISTANT	P. CAMELI	EXEC. SECRETARY	L. DEVITO
USER TECHNICAL INTERFACE	J. CROSS	ADMIN. SECRETARY	K. DAVIS
PROJECT ENGINEER/QA	Y. AMER	SR. SECRETARY	J. PRANSKY
TECH. OPS. SPECIALIST	S. DAVEY		

**MECHANICAL AND INTERLOCK SYSTEMS**  
**J. QUINTANA**  
**ASSOCIATE DIVISION DIRECTOR**

MANUFACTURING ENGR	P. CHOI
STAFF ASST. SR.	C. YUELYS-MIKSIS
SR. BEAMLINE ENGINEER	M. RAMANATHAN (6)
SR. ENGINEER	D. SHU
ADMIN. SECRETARY	B. DALTON (6)

**COMPUTER SYSTEMS**  
**J. MACLEAN**  
**ASSOCIATE DIVISION DIRECTOR**

PROJECT SPECIALIST	R. TORRES
TECHNICAL EDITOR	C. EYBERGER
TECHNICAL EDITOR	S. PICOLOGLOU (5)
ADMIN. SECRETARY	(VACANT)



- KEY:**
- (1) INTERIM
  - (2) STUDENT
  - (3) ARGONNE FELLOW
  - (4) OTHER DIVISION
  - (5) S.T.A.
  - (6) MULTIPLE ASSIGNMENT
  - (7) CONTRACT PERSONNEL
  - (8) VISITING FACULTY/SCIENTIST
  - (9) LEAVE OF ABSENCE
  - (10) ASSIGNED TO CNM
  - (11) EMERITUS

*W. Ruzicka*

EFFECTIVE: April 1, 2009

3/23/09

DATE

APPROVED: W. Ruzicka  
Director