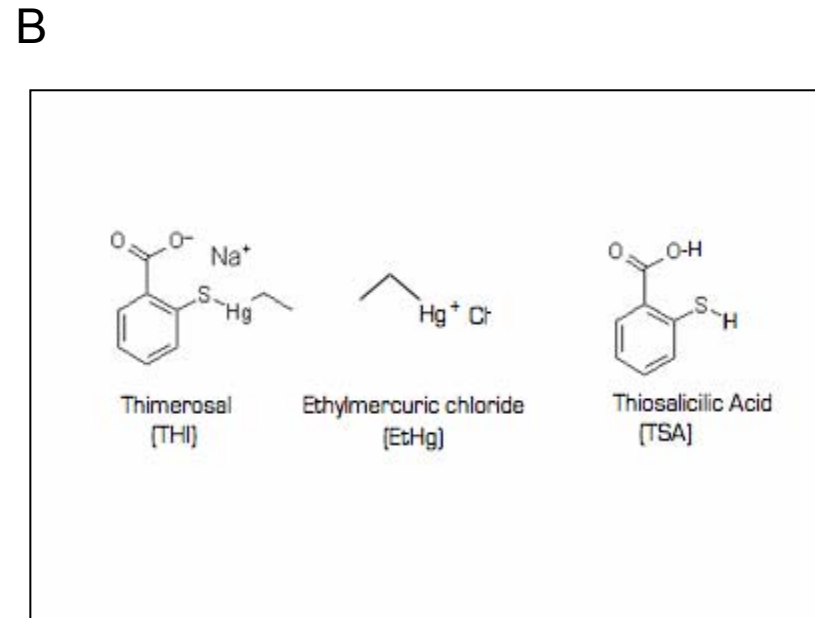
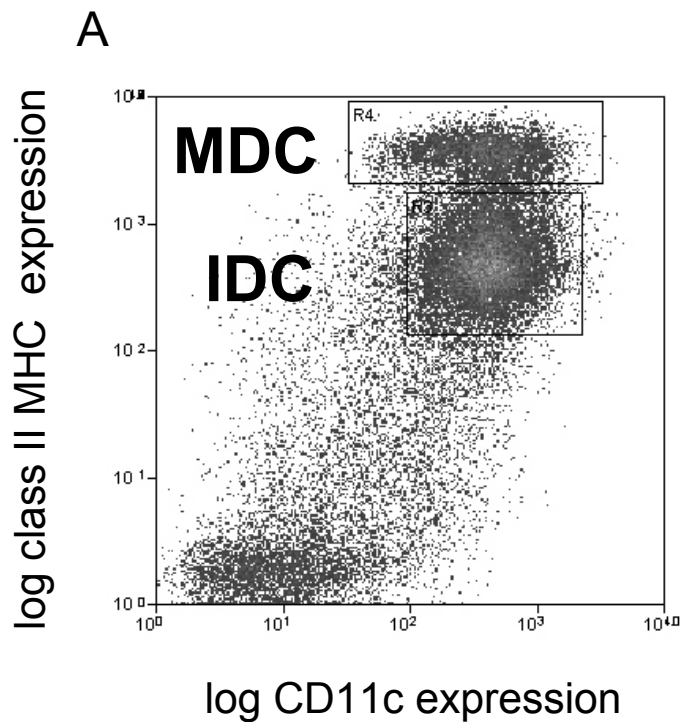


Supplementary Figure 1 Goth, et al.



A. Representative flow cytometric dot plot showing CD11c vs. class II MHC expression in the bone marrow derived dendritic cell (DC) cultures. used in this study. Thin line boxes within the dot plot are the gates used to select mature and immature DCs (MDC, IDC) for cell sorting.

B. Line structure drawings of the compounds thimerosal, ethylmercuric chloride and thiosalicylic acid used in this study. Ethylmercuric chloride and TSA ionize in solution to form the THI metabolites ethylmercuric and thiosalicylate ions.