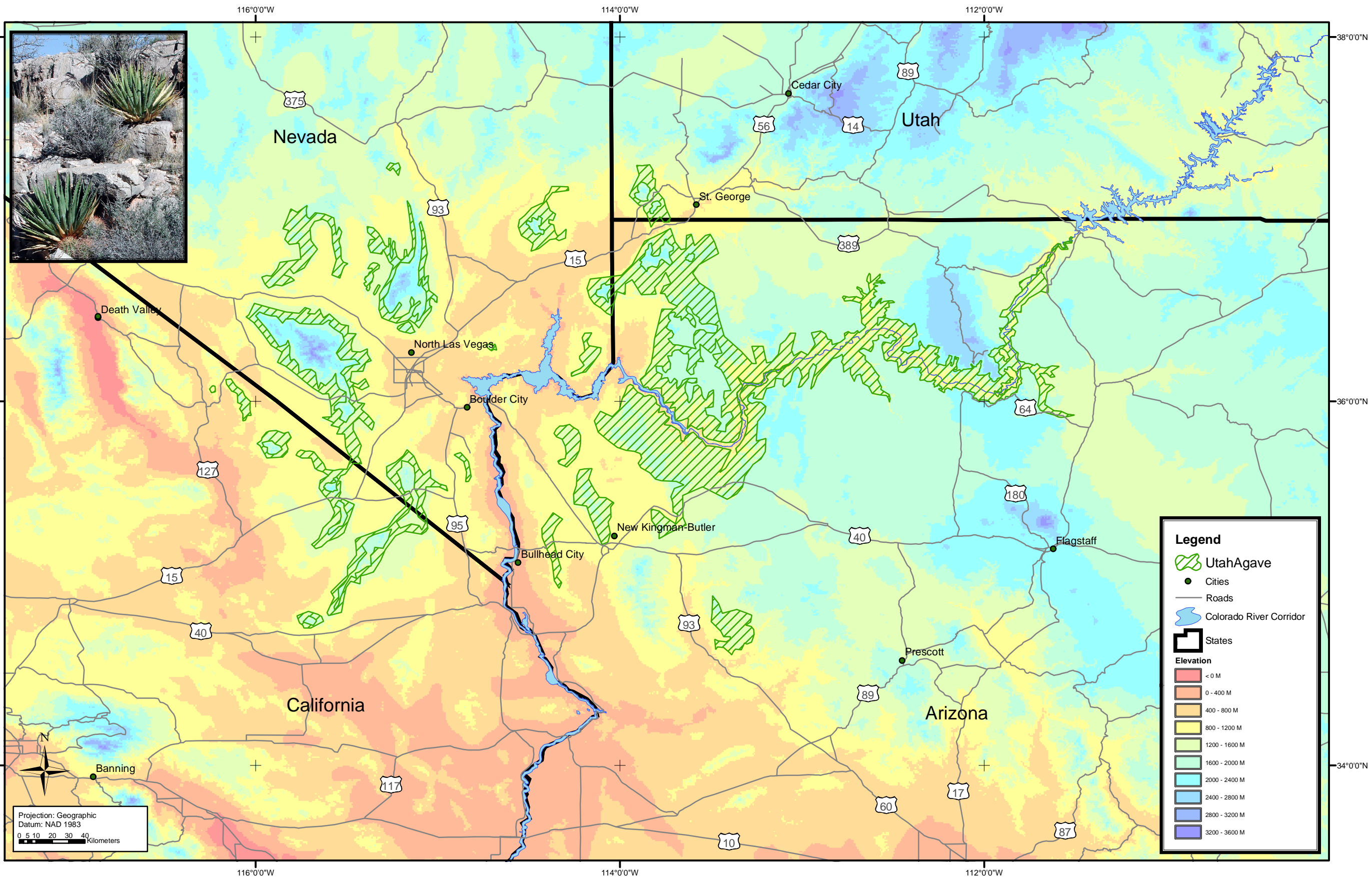


# Utah Agave (*Agave utahensis*) Distribution



Projection: Geographic  
Datum: NAD 1983  
0 5 10 20 30 40  
Kilometers

**Legend**

- Utah Agave
- Cities
- Roads
- Colorado River Corridor
- States

**Elevation**

- < 0 M
- 0 - 400 M
- 400 - 800 M
- 800 - 1200 M
- 1200 - 1600 M
- 1600 - 2000 M
- 2000 - 2400 M
- 2400 - 2800 M
- 2800 - 3200 M
- 3200 - 3600 M



Produced By: USGS Global Change Research Program,  
"Past, Recent, and Twenty-First Century Vegetation  
Change in the Arid Southwest."  
Contributors: Kenneth L. Cole, W. G. Spaulding, Wendy Hodgson,  
and Kathryn Thomas.

Data Compilation: Kenneth L. Cole  
Map Prepared By: Kirsten E. Larsen  
Date Prepared: 28 July 2004

Prepared At: USGS, Southwest Biological Science Center,  
Colorado Plateau Research Station,  
Geospatial Technology Laboratory  
Additional Information: [http://www.usgs.nau.edu/global\\_change/](http://www.usgs.nau.edu/global_change/)