



U. S. Department of the Interior
U. S. GEOLOGICAL SURVEY
BIOLOGICAL RESOURCES DISCIPLINE
WESTERN ECOLOGICAL RESEARCH CENTER



San Diego Field Station
5745 Kearny Villa Road, Suite M
San Diego, California 92123
September 28, 2005

Janet Nickerman
Botanist
U.S.D.A. Forest Service
Angeles National Forest
Forest Supervisor's Office
701 North Santa Anita Avenue
Arcadia, CA 91006

626-574-1613 office
jnickerman@fs.fed.us

Dear Janet,

The following is a data summary of the USGS surveys for the mountain yellow-legged frog (*Rana muscosa*) in the Angeles National Forest for 2005. This report is submitted in fulfillment of the 2005 agreement between USGS and the Angeles National Forest under contract # 02-IA-1105-01-00-049 (mod. 4) for mountain yellow-legged frog surveys.

We have included tables summarizing site information and the species found at these sites along with topographical maps of each of the survey locations. Tables 1-3 summarize the locations of sites and species observed during our surveys. Figures 1-6 show specific sections of these creeks that were surveyed as well as select photographs of habitat and species encountered.

Respectfully,

Robert N. Fisher
Stacie A. Hathaway
Adam R. Backlin
Cynthia J. Hitchcock
Sara L. Compton
Liz Gallegos
Greta Turschak



Data Summary for the 2005 Mountain Yellow-Legged Frog (*Rana muscosa*) Surveys Conducted in the Angeles National Forest

Data Summary

Prepared for:
Angeles National Forest

U.S. DEPARTMENT OF THE INTERIOR
U.S. GEOLOGICAL SURVEY
WESTERN ECOLOGICAL RESEARCH CENTER

Data Summary for the 2005 Mountain Yellow-Legged Frog (*Rana muscosa*) Surveys Conducted in the Angeles National Forest

By: Sara L. Compton¹, Adam R. Backlin¹, Cynthia J. Hitchcock², Robert N. Fisher¹ and Stacie A. Hathaway¹

U.S. GEOLOGICAL SURVEY
WESTERN ECOLOGICAL RESEARCH CENTER

Data Summary

Prepared for:

Angeles National Forest
Janet Nickerman

¹San Diego Field Station – San Diego Office
USGS Western Ecological Research Center
4165 Spruance Road, Suite 200
San Diego, CA 92101

²San Diego Field Station – Thousand Oaks Office
USGS Western Ecological Research Center
401 Hillcrest Drive
Thousand Oaks, CA 91360

Sacramento, California
2005

U.S. DEPARTMENT OF THE INTERIOR
GALE A. NORTON, SECRETARY

U.S. GEOLOGICAL SURVEY
Patrick Leahy, Acting Director

The use of firm, trade, or brand names in this report is for identification purposes only and does not constitute endorsement by the U.S. Geological Survey.

For additional information, contact:

Center Director
U.S. Geological Survey
Western Ecological Research Center
3020 State University Drive East
Modoc Hall, Room 3006
Sacramento, CA 95819

TABLE OF CONTENTS

Table 1. Summary of Angeles National Forest site locations surveyed	1
Table 2. Summary of animals observed for each Angeles National Forest site surveyed in 2005	2
Table 3. Summary of 2005 mountain yellow-legged frog captures by date and age class for each Angeles National Forest site surveyed.....	3
Figure 1. Overview of Angeles National Forest 2005 mountain yellow-legged survey locations	5
Figure 2. Angeles National Forest 2005 mountain yellow-legged frog survey reach at Bear and Vincent Gulch.....	6
Figure 3. Angeles National Forest 2005 mountain yellow-legged frog survey reach at Devil’s Canyon	7
Figure 4. Angeles National Forest 2005 mountain yellow-legged frog survey reach at Little Rock Creek.....	8
Figure 5. Angeles National Forest 2005 mountain yellow-legged frog survey reach at South Fork Big Rock Creek and South Fork Big Rock Creek Tributary	9
Figure 6. Angeles National Forest 2005 mountain yellow-legged frog survey habitat.....	10
Figure 7. Mountain yellow-legged frog (a) egg mass, (b) 2 nd year tadpole, and (c) adult.....	11

Recommended Citation:

Compton, S. L., A. R. Backlin, C. J. Hitchcock, R. N. Fisher and S. A. Hathaway. 2005. Data summary for the 2005 mountain yellow-legged frog (*Rana muscosa*) surveys conducted in the Angeles National Forest. U. S. Geological Survey data summary prepared for the Angeles National Forest, Arcadia, CA. 11 pp.

Table 1. Summary of Angeles National Forest site reaches surveyed during 2005.

SITE	SURVEY DATE	START LATITUDE ¹	START LONGITUDE ¹	END LATITUDE ¹	END LONGITUDE ¹
Bear Gulch	22-Jun-2005	34.34810	117.71073	34.37439	117.82561
	20-Jul-2005	34.34810	117.71073	34.37439	117.82561
	6-Sep-2005	34.34810	117.71073	34.37343	117.82317
Devil's Canyon	13-Jun-2005	34.32140	117.94759	34.32636	117.93177
Little Rock Creek	21-Jun-2005	34.36235	117.89777	34.35840	117.88105
	19-Jul-2005	34.36235	117.89777	34.36346	117.87750
	3-Aug-2005	34.36313	117.90182	34.36175	117.87857
South Fork Big Rock Creek	20-Jun-2005	34.38569	117.82514	34.35861	117.70466
	21-Jul-2005	34.38519	117.82754	34.35683	117.70617
	4-Aug-2005	34.38519	117.82754	34.35683	117.70617
South Fork Big Rock Creek Tributary	20-Apr-2005	34.37949	117.83232	34.37439	117.82561
	20-Jun-2005	34.37949	117.83232	34.37439	117.82561
	21-Jul-2005	34.37949	117.83232	34.37439	117.82561
	4-Aug-2005	34.37949	117.83232	34.37343	117.82317
Vincent Gulch	23-Jun-2005	34.34733	117.72560	34.34332	117.72692
	21-Jul-2005	34.34332	117.72507	34.34332	117.72692
	7-Sep-2005	34.34332	117.72507	34.34332	117.72692

¹ Coordinates recorded in WGS84 (decimal degrees).

Table 2. Summary of animals observed for each Angeles National Forest site surveyed in 2005.

SITE	NATIVE AQUATIC / SEMI-AQUATIC SPECIES			NON-NATIVE AQUATIC / SEMI-AQUATIC SPECIES
	mountain yellow-legged frog (<i>Rana muscosa</i>) ¹	California treefrog (<i>Pseudacris cadaverina</i>)	two-striped garter snake (<i>Thamnophis hammondi</i>) ²	rainbow trout (<i>Oncorhynchus mykiss</i>)
Bear Gulch			X	X
Devil's Canyon	X			
Little Rock Creek	X		X	X
South Fork Big Rock Creek	X			X
South Fork Big Rock Creek Tributary	X		X	X
Vincent Gulch	X	X	X	X

¹ Federally endangered.

² CDFG: CSC; BLM: Sensitive; FS: Sensitive.

Table 3. Summary of 2005 mountain yellow-legged frog captures by date and age class for each Angeles National Forest site surveyed.

SITE	DATE	LATITUDE ¹	LONGITUDE ¹	AGE CLASS	TOTAL COUNT
Bear Gulch	22-Jun-2005	—	—	—	—
	20-Jul-2005	—	—	—	—
	6-Sep-2005	—	—	—	—
Devil's Canyon	13-Jun-2005	34.32333	117.94197	Adult	1
		34.32263	117.94417	Adult	1
		34.32255	117.94450	Adult	1
		34.32242	117.94463	Adult	1
		34.32253	117.94475	Adult	1
Little Rock Creek	21-Jun-2005	34.35967	117.87987	Adult	1
		34.35910	117.88088	Adult	1
	19-Jul-2005	34.35827	117.88542	Adult	1
	3-Aug-2005	34.36038	117.88030	Adult	1
34.36348		117.87662	Adult	1	
South Fork Big Rock Creek	20-Jun-2005	34.38022	117.83182	Juvenile	1
	4-Aug-2005	34.37880	117.83302	Juvenile	1
		34.37978	117.83207	Metamorph	1
South Fork Big Rock Creek Tributary	20-Apr-2005	34.37606	117.82820	Juvenile	1
	20-Jun-2005	34.37787	117.83152	Adult	1
		34.37758	117.83112	Adult	1
		34.37790	117.83103	Adult	1
		34.37735	117.83067	Adult	1
		34.37760	117.82894	Adult	1
		34.37527	117.82760	Adult	1
		19-Jul-2005	34.37782	117.82937	Adult
	34.37818		117.82937	Adult	1
	34.37753		117.83125	Adult	1
	34.37753		117.83125	Adult	1
	34.37753		117.83125	Adult	1
	34.37540		117.82775	Adult	1
	34.37538		117.82772	Adult	1
	34.37538		117.82775	Adult	1
	34.37542		117.82778	Adult	1
	34.37545		117.82772	Adult	1
	34.37760		117.82894	Adult	1
	34.37760		117.82894	Adult	1
	34.37548		117.82770	Adult	1
	34.37568		117.82784	Adult	1
	34.37727		117.83018	Juvenile	1
	34.37760		117.82894	Juvenile	1
	34.37568	117.82784	Juvenile	1	
	34.37792	117.83153	1st Year Tadpole	3	
	34.37773	117.83155	1st Year Tadpole	1	
	34.37762	117.83137	1st Year Tadpole	1	
	4-Aug-2005	34.37752	117.83052	Adult	1
		34.37793	117.82772	Adult	1
		34.37720	117.82815	Adult	1
		34.37542	117.82782	Adult	1
		34.37632	117.82783	Adult	1
		34.37555	117.82768	Adult	1
		34.37535	117.82752	Adult	1
		34.37537	117.82752	Adult	1
		34.37477	117.82478	Adult	1
		34.37750	117.83048	Juvenile	1
34.37750		117.82912	Juvenile	1	
34.37552		117.82772	Juvenile	1	
34.37408		117.82618	Juvenile	1	
34.37720	117.82815	1st Year Tadpole	2		

¹ Coordinates recorded in WGS84 (decimal degrees).

Table 3 (continued). Summary of Angeles National Forest 2005 mountain yellow-legged frog captures by date and age class for each site **1.**

SITE	DATE	LATITUDE ¹	LONGITUDE ¹	AGE CLASS	TOTAL COUNT
Vincent Gulch	23-Jun-2005	34.34902	117.72522	Adult	1
	21-Jul-2005	34.34722	117.72558	Adult	1
		34.35252	117.72593	1st Year Tadpole	7
		34.35250	117.72593	1st Year Tadpole	1
		34.35262	117.72663	1st Year Tadpole	2
		34.35287	117.72700	1st Year Tadpole	1
	7-Sep-2005	34.35175	117.72512	Adult	1
		34.35222	117.72543	1st Year Tadpole	4
		34.35255	117.72645	1st Year Tadpole	4
		34.35177	117.72507	1st Year Tadpole	1
		34.35173	117.72507	1st Year Tadpole	1
		34.35192	117.72505	1st Year Tadpole	1
		34.35260	117.72598	1st Year Tadpole	5
		34.35265	117.72670	1st Year Tadpole	6
		34.35292	117.72707	1st Year Tadpole	1
34.35302	117.72700	1st Year Tadpole	4		

¹Coordinates recorded in WGS84 (decimal degrees).

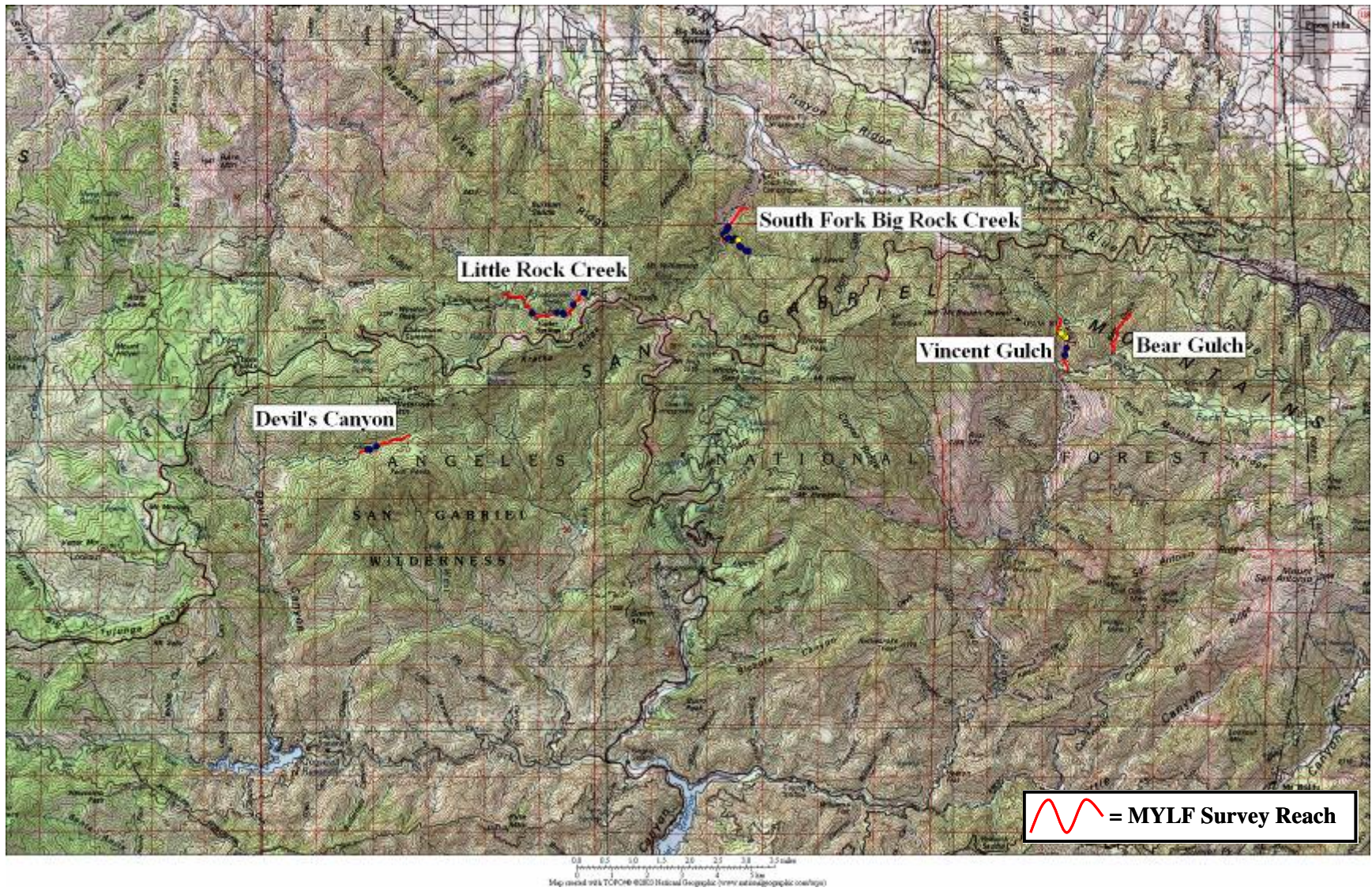


Figure 1. Overview of Angeles National Forest 2005 mountain yellow-legged survey locations.

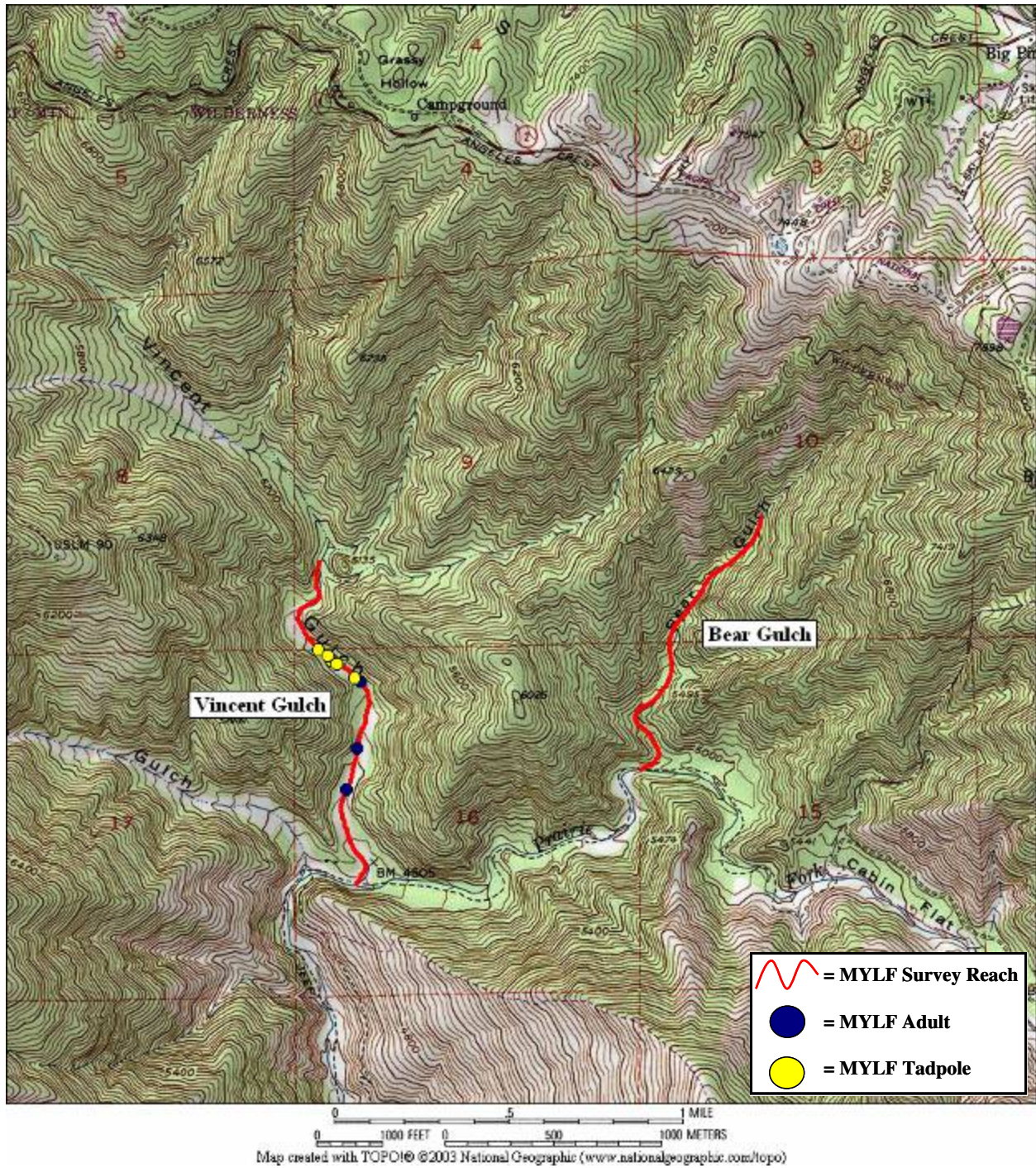


Figure 2. Angeles National Forest 2005 mountain yellow-legged frog survey reach at Bear and Vincent Gulch.

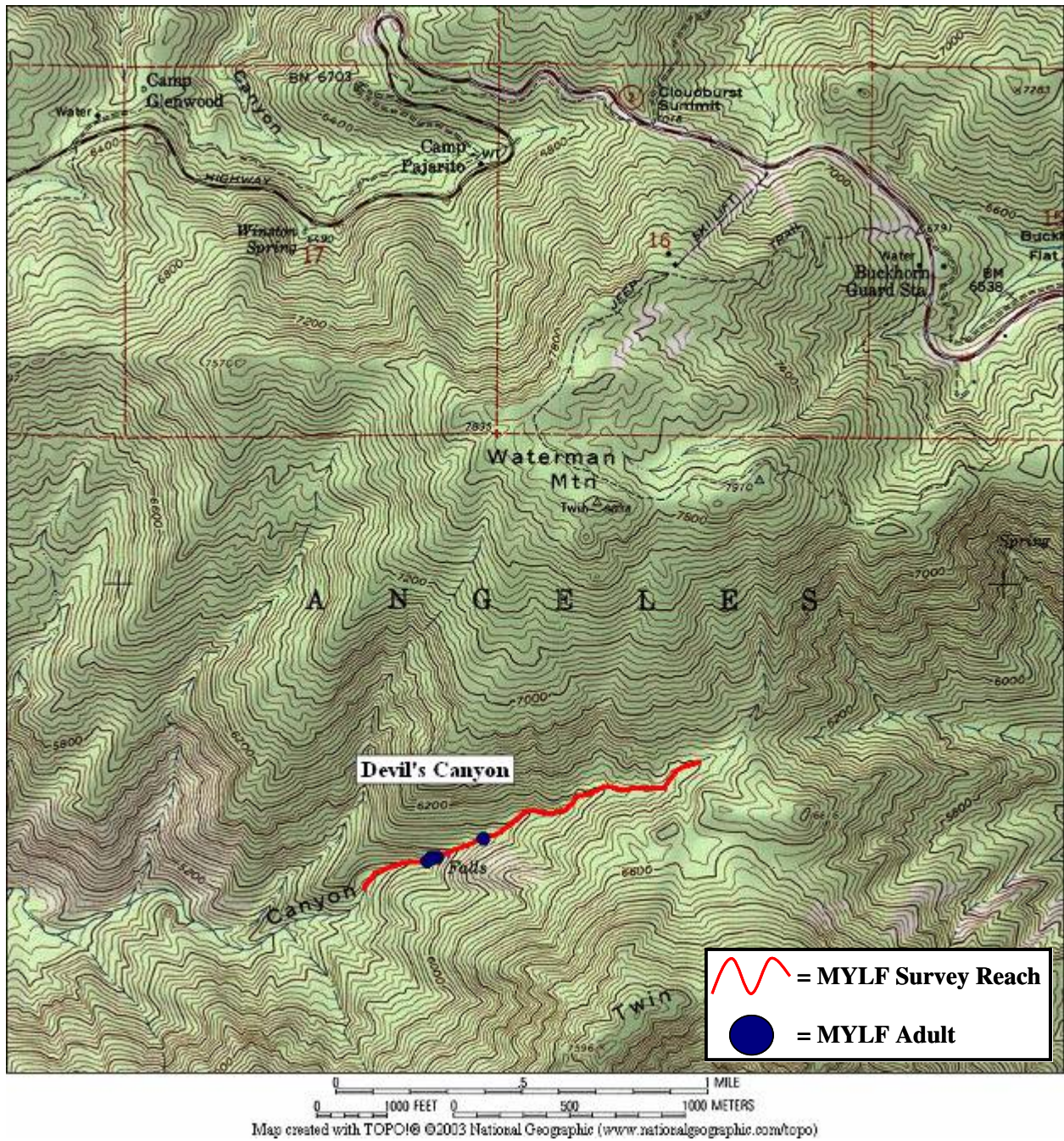


Figure 3. Angeles National Forest 2005 mountain yellow-legged frog survey reach at Devil's Canyon.

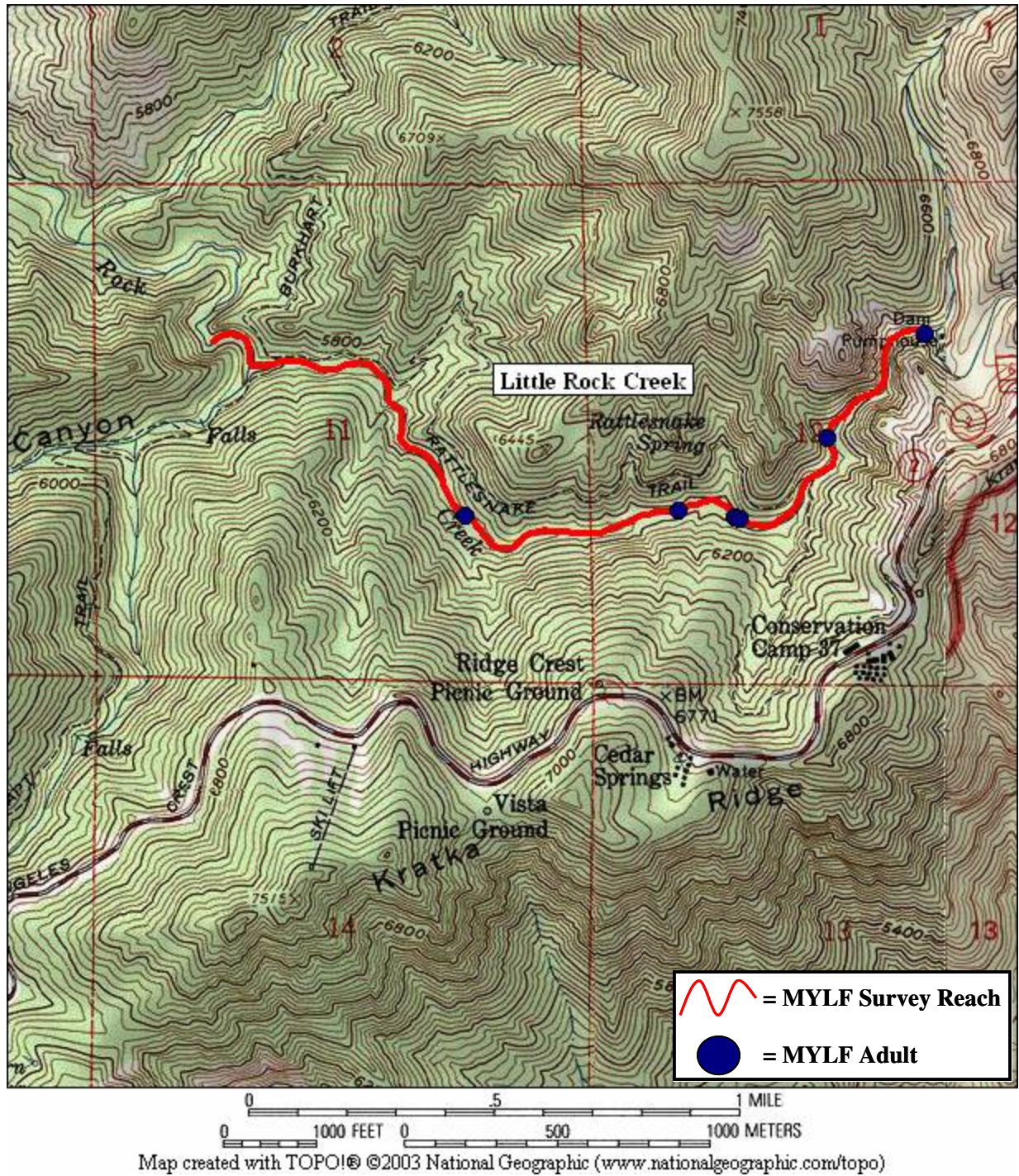


Figure 4. Angeles National Forest 2005 mountain yellow-legged frog survey reach at Little Rock Creek.

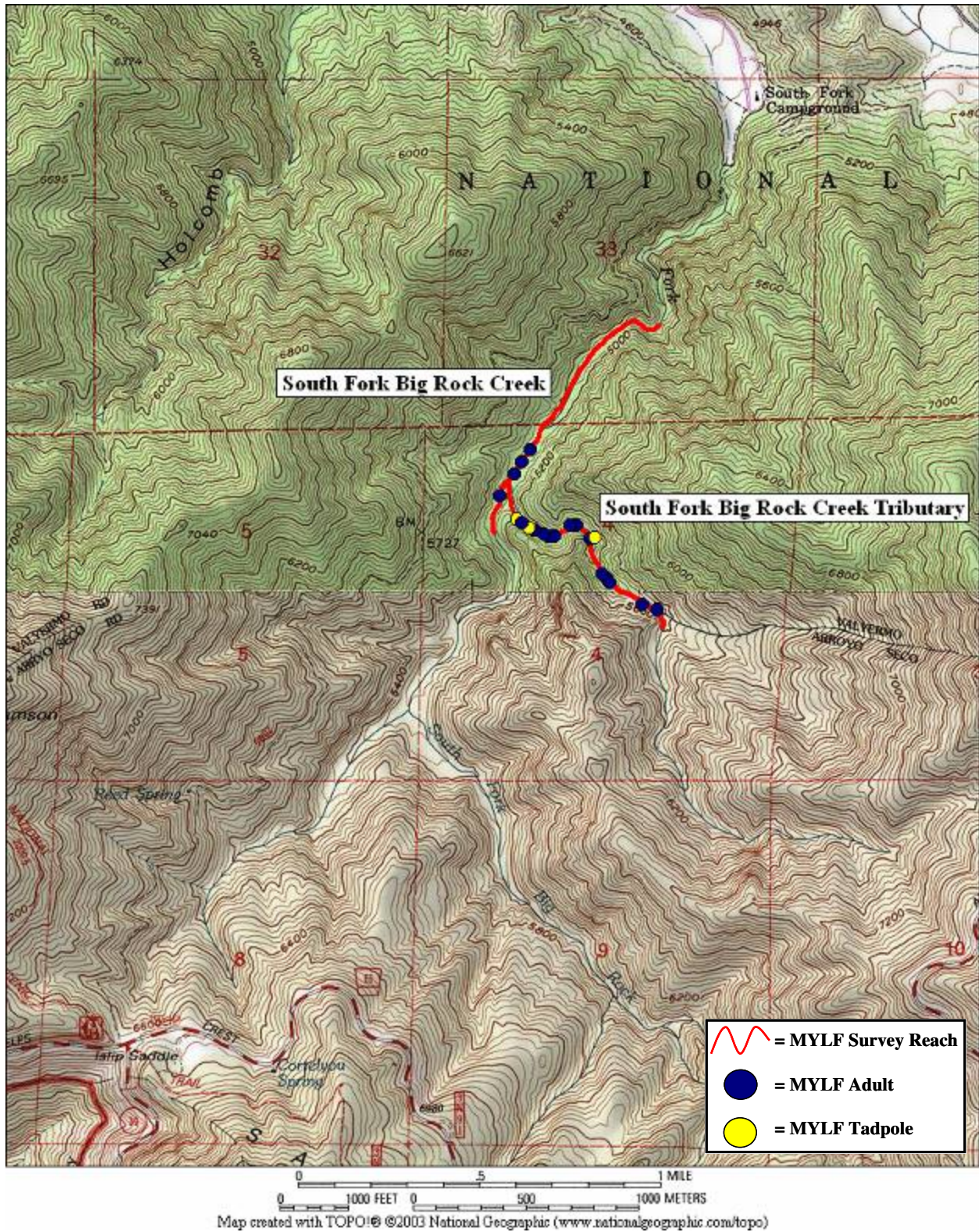


Figure 5. Angeles National Forest 2005 mountain yellow-legged frog survey reach at South Fork Big Rock Creek and South Fork Big Rock Creek Tributary.



Bear Gulch



Devil's Canyon



Little Rock Creek



South Fork Big Rock Creek



South Fork Big Rock Creek Tributary



Vincent Gulch

Figure 6. Angeles National Forest 2005 mountain yellow-legged frog survey habitat.



Figure 7. Mountain yellow-legged frog (a) egg mass, (b) 2nd year tadpole, and (c) adult.