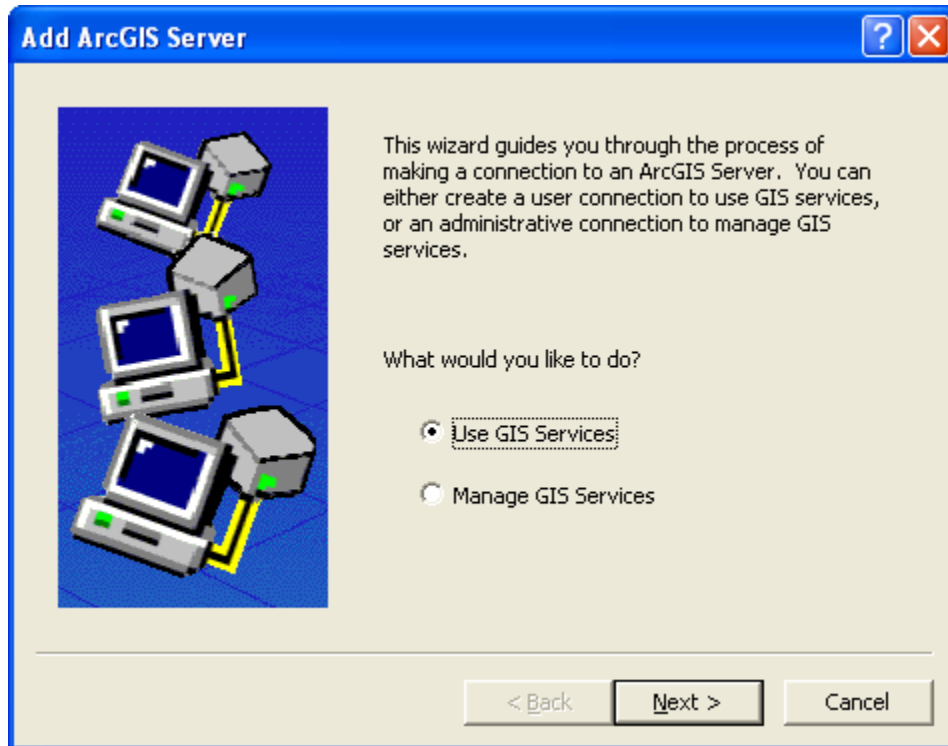


Adding GDW Data from the ArcGIS Server into ArcMap 9.2

- 1) Open ArcMap and Click the Add Data Button
- 2) Select GIS Servers and then Add ArcGIS Server
- 3) Click the Use GIS Services radio button, then click Next

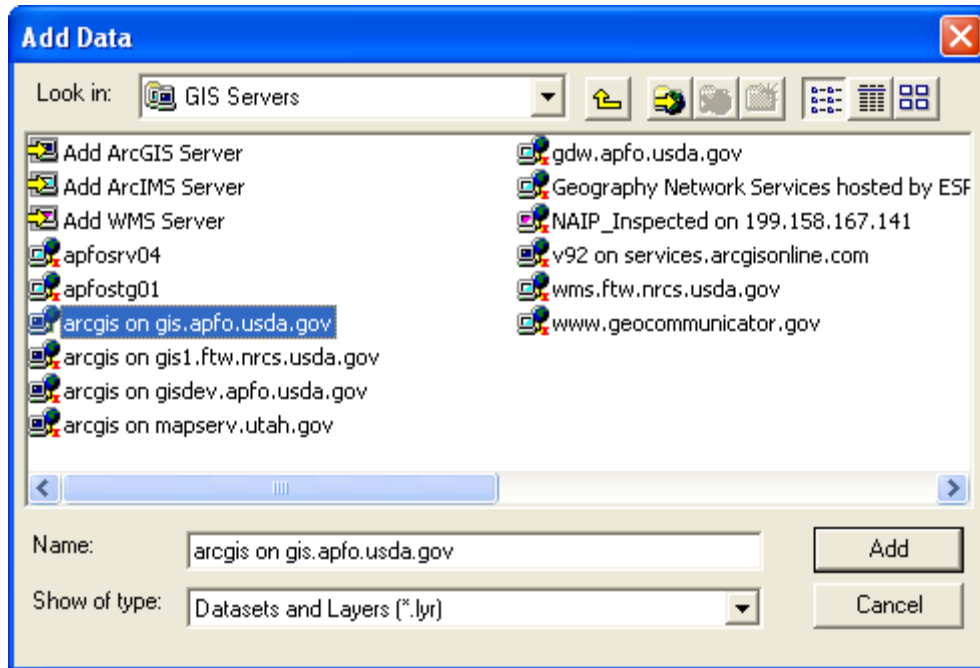


- 4) The Add ArcGIS Server Connection Dialog will open
 - 4a) Click the Internet Server radio button
 - 4b) In the Server: text box enter <http://gis.apfo.usda.gov/arcgis/services>
 - 4c) Click Finish

The image shows a 'General' dialog box with a blue title bar and standard window controls. The main content area is light beige and contains the following elements:

- Choose the type of ArcGIS Server connection**: A heading for the radio button options.
- Internet**: A selected radio button. Below it is a 'Server URL:' label and a text box containing the URL `http://gis.apfo.usda.gov/arcgis/services`. A second line of text, `http://www.myserver.com/arcgis/services`, is visible below the text box.
- Local**: An unselected radio button. Below it is a 'Host Name:' label and an empty text box.
- Authentication (Optional)**: A section with a thin border containing:
 - 'User Name:' label and an empty text box.
 - 'Password:' label and an empty text box.
 - A checkbox labeled 'Save Username/Password' which is currently unchecked.
- Buttons**: At the bottom right, there are three buttons: '< Back', 'Finish', and 'Cancel'.

5) A new Server has been added to the GIS Servers list. The new server is called: *arcgis on gis.apfo.usda.gov*. This is the new GDW imagery server for FY07 NAIP imagery. The data is organized by state.



6) Double Click the new ArcGIS Server connection to access the server.

7) Double Click the NAIP_2007 folder to see the FY07 state based imagery services.

