

H11000

NOAA FORM 76-35A

U.S. DEPARTMENT OF COMMERCE
NATIONAL OCEANIC AND ATMOSPHERIC ADMINISTRATION
NATIONAL OCEAN SERVICE

DESCRIPTIVE REPORT

Type of Survey Hydrographic

Field No. RA-10-05-00

Registry No. H-11000

LOCALITY

State Alaska

General Locality Southwest Prince William Sound

Sublocality Hogan Bay to Point Helen

2000

CHIEF OF PARTY

Commander Daniel R. Herlihy, NOAA

LIBRARY & ARCHIVES

DATE

HYDROGRAPHIC TITLE SHEET

H-11000

INSTRUCTIONS - The hydrographic sheet should be accompanied by this form,
filled in as completely as possible, when the sheet is forwarded to the office.

FIELD NO.

RA-10-05-00

State Alaska

General Locality Southwest Prince William Sound

Sublocality Hogan Bay to Point Helen

Scale 1:10,000

Date of Survey 9/15/00 - 10/26/00

Instructions Dated Aug. 25, 2000

Project No. OPR-P139-RA

Vessel RA-1(2121), RA-2(2122), RA-3(2123), RA-4(2124), RA-5(2125),
RA-6(2126), and RA-7(2127)

Chief of Party Commander D. R. Herlihy, NOAA

Surveyed by Ship personnel and physical scientists from Pacific Hydrographic Branch

Soundings taken by echo sounder, hand lead, pole SB 1180, RESON 8101, Knudsen 320

Graphic record scaled by RAINIER Personnel

Graphic record checked by RAINIER Personnel

Evaluation by L. Deodato Automated plot by HP DesignJet 1050C

Verification by E. Domingo, R. Davies, R. Mayor, R. Shipley

Soundings in Fathoms at MLLW

REMARKS: Time in UTC.

Revisions and annotations appearing as endnotes were generated

during office processing..

Added c/c 5/1/03 mcr

All depths listed in this report are referenced to

mean lower low water unless otherwise noted.

Accomplished	September	October
LNM Singlebeam	356.73	287.78
LNM Multibeam	1095.14	1797.52
SQ NM Singlebeam	14.23	1.15
SQ NM Multibeam	72.62	100.55
Total SQ NM	86.85	101.7
SV Casts	71	141
Bottom Samples	0	166
AWOIS Invest.	2	15
Tide gauges	4	0
Control station	0	0
Down time (hr)	11	7.5
Days at Sea	16	27

Sheet AQ
H11000

Sheet AT
H11002

Sheet AS
H11001

Sheet AU
H11003

Sheet AV
H11004

Sheet AW
H11005

Sheet AX
H11006

Sheet AY
H11007

Sheet BE
H11013

Sheet BA
H11012

Sheet BF
H11017

Progress Sketch

OPR-P139-RA
Prince William Sound
ALASKA

October 2000

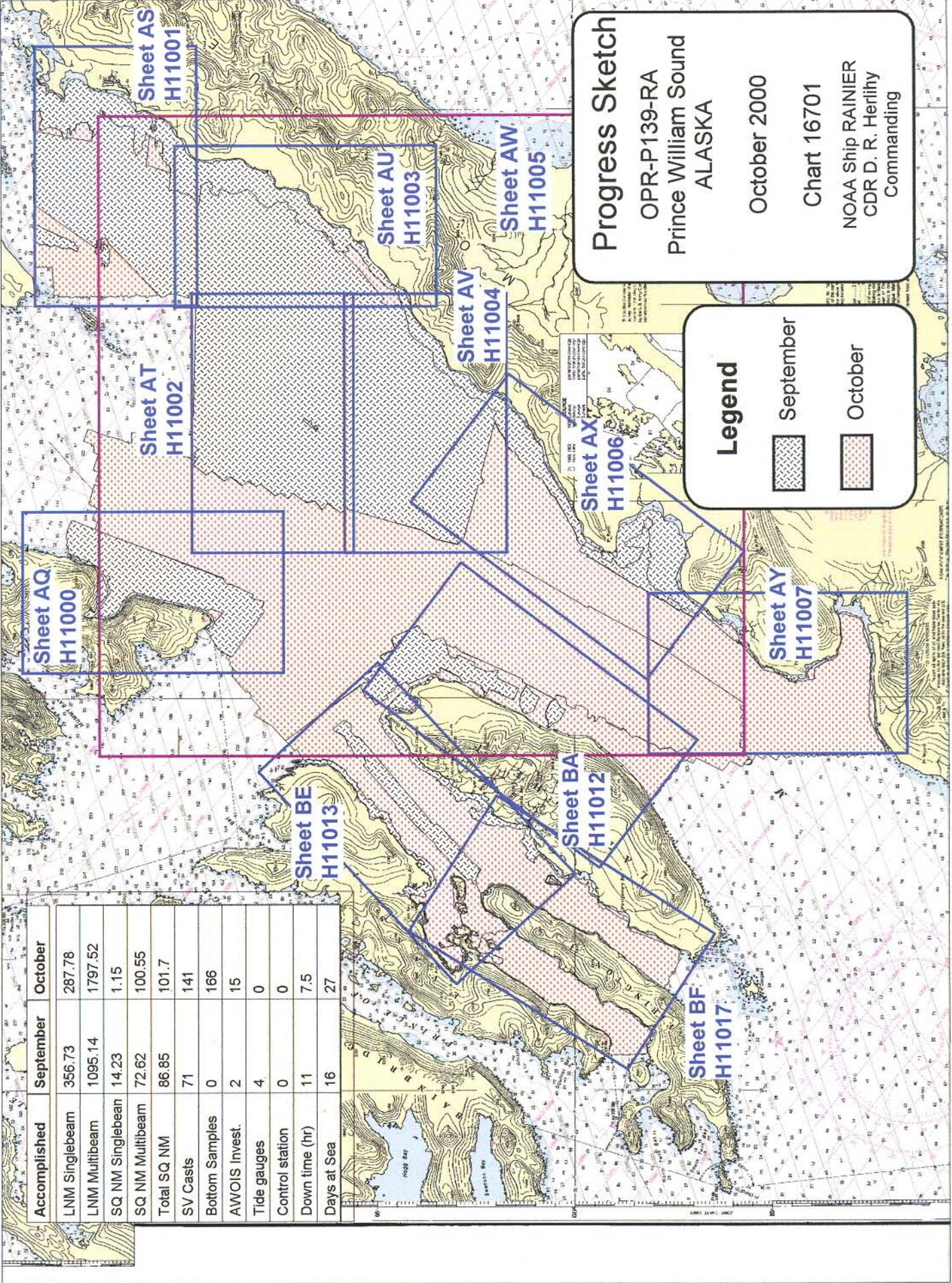
Chart 16701

NOAA Ship RAINIER
CDR D. R. Herlthy
Commanding

Legend

September

October



Descriptive Report to Accompany Hydrographic Survey H11000

Project OPR-P139-RA-00¹ Southwest Prince William Sound

Scale 1:10,000

September-October 2000

NOAA Ship RAINIER

Chief of Party: Commander Daniel R. Herlihy, NOAA

A. AREA SURVEYED

This hydrographic survey was completed as specified by Hydrographic Survey Letter Instructions OPR-P139-RA-00², dated August 25, 2000, and the Draft Standing Project Instructions dated April 6, 1998. The survey area is located in southwest Prince William Sound, approximately 11 nautical miles west of Montague Island at the southeast tip of Knight Island. It extends 5.2 nautical miles from Pt. Helen north to approximately 0.9³ nautical miles south of Discovery Point. The survey's northern limit is latitude 60°13'53.01"N⁴ and the southern limit is latitude 60°07'56.6"N⁵. The survey's western limit is ⁶ longitude 147°47'42.06"W⁷ and the eastern limit is longitude 147°41'22.35"W⁸.

Data acquisition was conducted from September 15, 2000 to October 26, 2000 (DN 259 to 300).

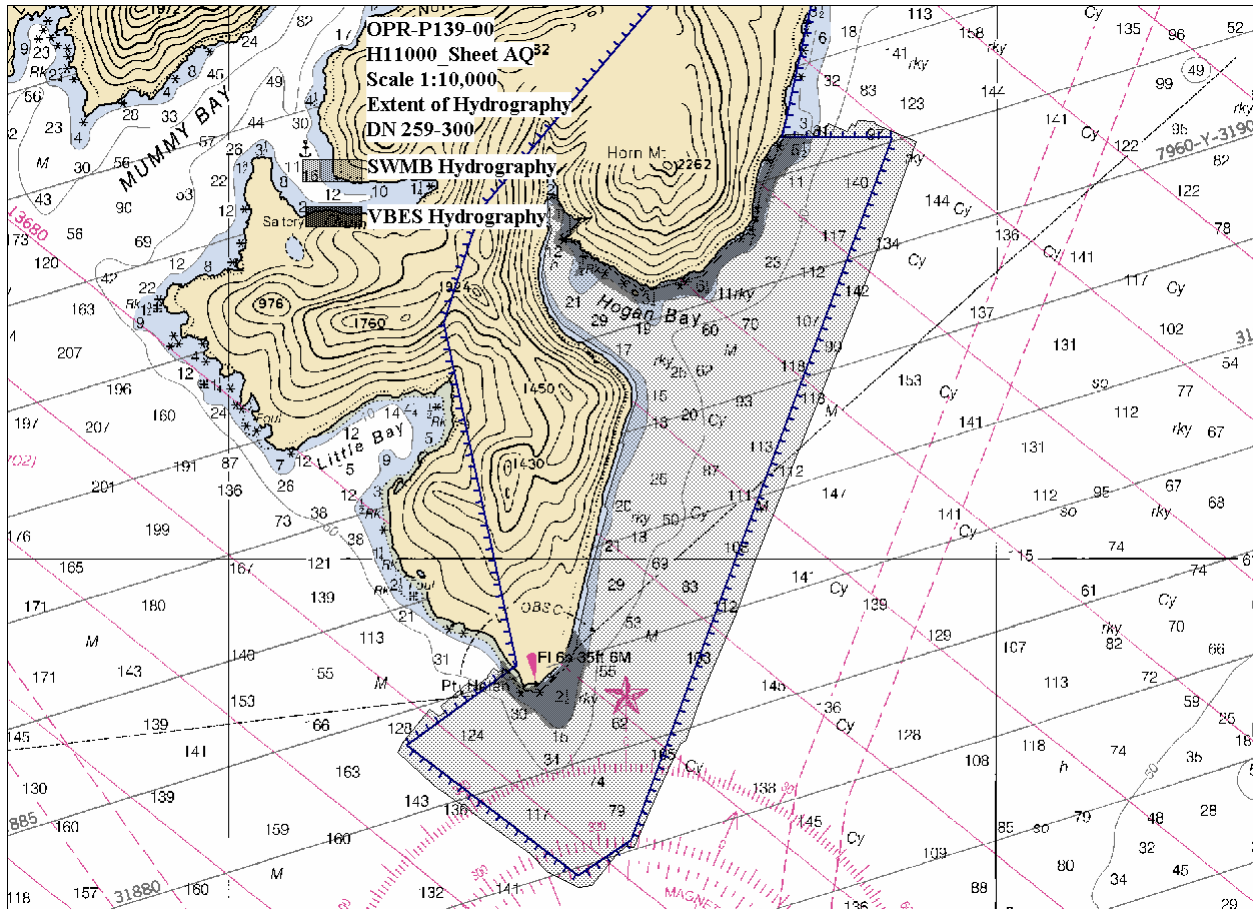


Figure 1. Extent of Survey H11000 SWMB and VBES Hydrography

There are 21 additional pages in this report, available for download through the NOS Hydrographic Survey Data Map Service.