

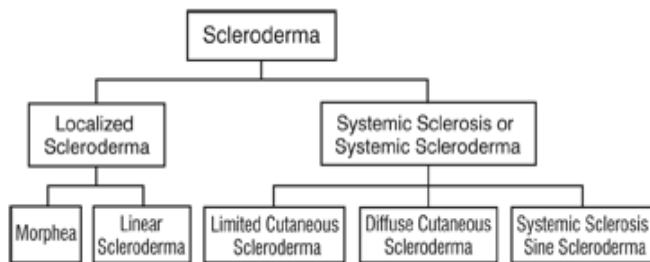
## Fact Sheet

## Scleroderma

Scleroderma is a disabling disease characterized by fibrosis, an excessive production of connective tissue proteins, such as collagen. Its name is derived from the Greek words “sklerosis” (which means hardness) and “derma” (which means skin), because a major symptom is hard skin due to fibrosis. The cause of the disease is not known, but it is believed to be an autoimmune disease (when the body mistakenly detects its own tissue as foreign and attacks itself).

Scleroderma has many different forms that are placed in two major categories: localized and systemic. Localized scleroderma is generally limited to skin, tissues, and, in some cases, underlying muscle. Systemic sclerosis affects many parts of the body, such as skin, internal organs, and blood vessels.

### Types of Scleroderma

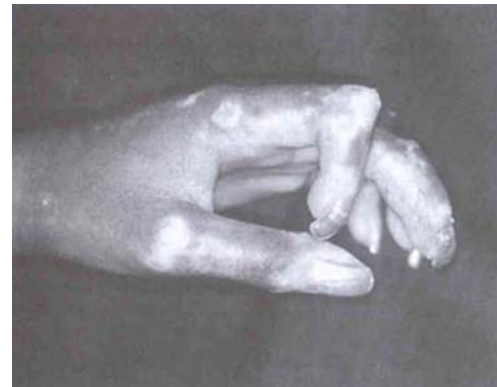


Approximately 50,000 Americans are affected by scleroderma and it is 2-3 times more common in women than men. Although it strikes patients of all ages, including children, incidence is most likely between the ages of 40-60. There is a higher prevalence in some Native American populations.

Raynaud’s phenomenon—an intensified reaction to cold or anxiety, including numbness in fingers, toes, and sometimes other extremities—affects approximately 90% of people with scleroderma at some point in their life. By contrast, only about 3% of the general population has Raynaud’s phenomenon.

### Yesterday

- In the past, scleroderma frequently went undiagnosed because of its rarity. Patients were usually referred to orthopedic surgeons to treat shortening of tendons and muscles (a permanent condition known as “contracture”), as well as complications from infections that might require an amputation or the removal of dead or damaged tissue.



Photograph from [Primer on the Rheumatic Diseases, 11<sup>th</sup> edition](#), courtesy of Springer

- Although there were no known treatments, a published description from 18<sup>th</sup> century Italy did report the successful resolution of symptoms following 11 months of warm milk and vapor baths, bleeding from the foot, and small doses of mercury.

### Today

- We have learned that scleroderma is not contagious.
- Patients are usually referred to dermatologists and rheumatologists who have expertise in autoimmune diseases and musculoskeletal disorders. Patients are still treated by orthopedic surgeons to manage health issues related to the disease, such as those associated with infections. While the amputation of fingers and toes is sometimes still unavoidable, these procedures are rarely necessary because of the

availability of many new treatments that target specific tissues and nerves.

- In order to manage the activities of daily living and to intervene in problems of contracture, occupational and physical therapists are also often involved in a patient's care. In addition, other health specialists become involved if particular organs are affected. For example, cardiologists for heart problems, pulmonologists for lung complications, and gastroenterologists for digestive tract issues.
- The majority of treatments address specific, affected organs and not the underlying cause of scleroderma, which is the excessive production of collagen.
- NIH-funded research has shown that the immunosuppressive drug cyclophosphamide may improve lung function and quality-of-life in scleroderma patients.
- Although no genetic contribution to the disease has been identified yet, potential genetic variations that may contribute to the disease process is an important area of NIH investigation.
- The NIH-funded National Family Registry for Scleroderma is collecting biological samples from patients and, when possible, their parents, so that genetic differences between patients and healthy individuals can be detected and potentially traced to a parent. Further research based on this registry may reveal genes that contribute to the development of scleroderma.

- New therapies may prevent the development of scleroderma by interrupting the process of fibrosis or immune system dysfunction that leads to attacks on a patient's own tissues. NIH-supported researchers have developed several mouse models that mimic these biological pathways in humans. Additional insights from these models could be pivotal to the development of new scleroderma treatments.
- Scleroderma susceptibility genes discovered by the National Family Registry may identify new targets for treatment.
- Participation of patients in clinical trials is one of the best ways to advance new knowledge and contribute to the development of new treatments.

Contact: Dr. Louise Rosenbaum, [RosenbaumL@mail.nih.gov](mailto:RosenbaumL@mail.nih.gov)  
Tel. 301-496-8271

## Tomorrow

- Categorizing the severity of the disease by distinct patterns of gene expression, or "gene signatures," may guide personalized treatment for scleroderma patients.
- Antibodies are molecules that attack the body's invaders, such as bacteria or viruses. In the case of autoantibodies a person's own tissues are attacked. Autoantibodies may carry out some of the tissue damage seen in scleroderma, and therefore may be able to be used to help characterize patients' conditions and predict the future course of their disease.