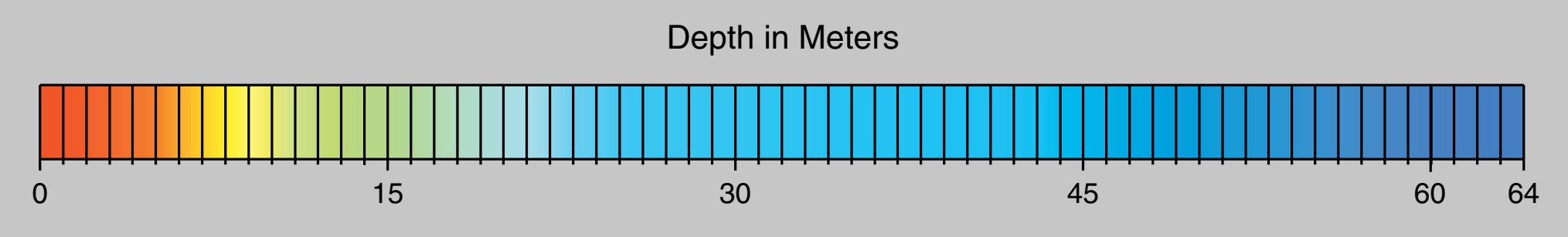
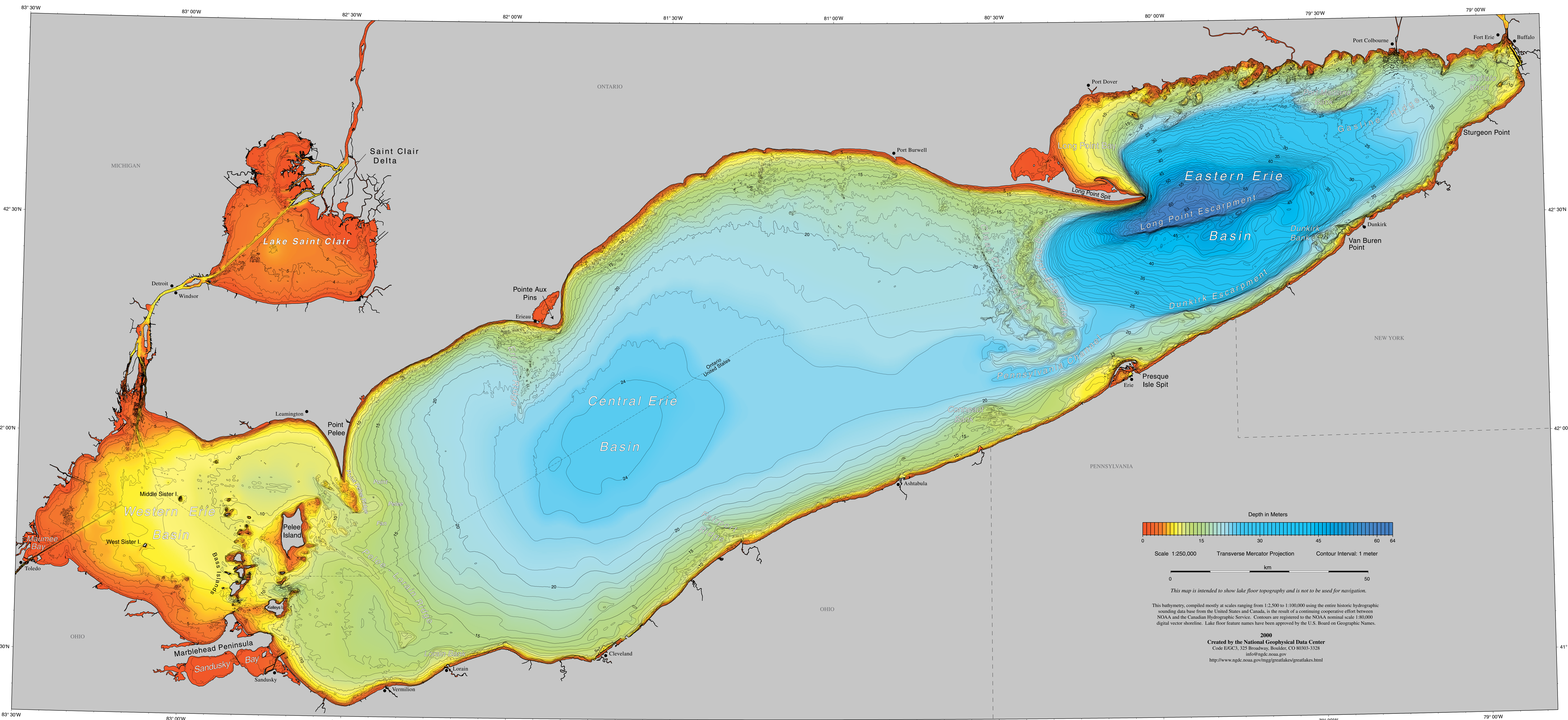
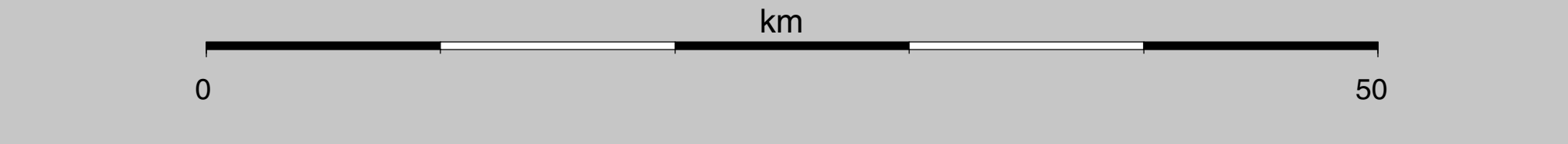




BATHYMETRY OF LAKE ERIE AND LAKE SAINT CLAIR



Scale 1:250,000 Transverse Mercator Projection Contour Interval: 1 meter



This map is intended to show lake floor topography and is not to be used for navigation.

This bathymetry, compiled mostly at scales ranging from 1:2,500 to 1:100,000 using the entire historic hydrographic sounding data base from the United States and Canada, is the result of a continuing cooperative effort between NOAA and the Canadian Hydrographic Service. Contours are registered to the NOAA nominal scale 1:80,000 digital vector shoreline. Lake floor feature names have been approved by the U.S. Board on Geographic Names.

2000
Created by the National Geophysical Data Center
Code E/GC3, 325 Broadway, Boulder, CO 80303-3328
info@ngdc.noaa.gov
http://www.ngdc.noaa.gov/mgg/greatlakes/greatlakes.html