



Right Whale Mandatory Ship Reporting System



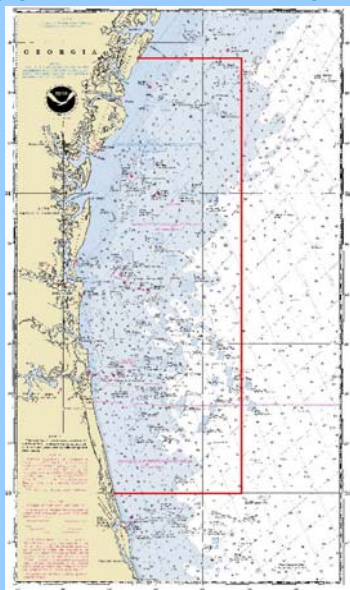
All commercial ships of 300 gross tons and greater are required to report in when they enter either of two designated right whale reporting areas along the U.S. East Coast. All ships equipped with INMARSAT C must report in IMO standard format as provided in the table below. For further information on reporting procedures please consult 33 CFR Part 169, the Coast Pilot, or the Mandatory Ship Reporting (MSR) System web site at: http://www.nmfs.noaa.gov/prot_res/PR2/Conservation_and_Recovery_Program/msr/msrhome.html

Mandatory Reporting Requirements: (Report to: rightwhale.msr@noaa.gov or Telex: 236737831)

Paragraph	Function	Information Required
System Name	Area Identifier	Reporting system area name (WHALESNORTH or WHALESSOUTH).
M	INMARSAT Number	9-digit vessel INMARSAT number.
A	Ship	Vessel name and call sign.
B	Date, time, and month of report	6-digit group giving day of month and time, single letter indicating time zone, and three letters indicating month.
E	True course	3-digit number indicating true course.
F	Speed in knots and tenths	3-digit group indicating knots and tenths.
H	Date, time, and point of entry into system	Date and time expressed as in (B) and latitude and longitude expressed as a four digit group giving latitude, the letter N indicating north, followed by a /, a five digit group giving longitude, and the letter W indicating west.
I	Destination and ETA	Name of port and arrival time expressed as in (B).
L	Route information	Route information should be reported as direct rhumbline to port (RL) and intended speed or a series of way points (WP). Vessels reporting waypoints should include latitude and longitude, expressed as in (H), and intended speed between waypoints. For vessels transiting within a traffic separation scheme (TSS), give only the WP on entry and departure of TSS.

WHALESSOUTH

(operates 15 Nov. to 16 April)



NOAA Chart #11480

WHALESNORTH BOUNDARY

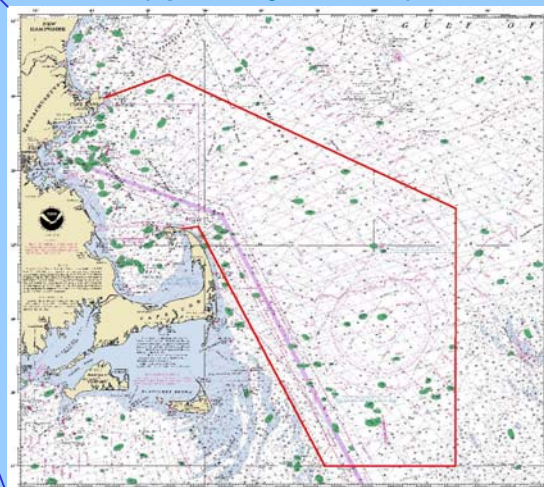
The area coordinates (NAD 83) are as follows: from a point on Cape Ann, Massachusetts at 42°39'N, 70°37'W; then northeast to 42°45'N, 70°13'W; then southeast to 42°10'N, 68°31'W; then south to 41°00'N, 68°31'W; then west to 41°00'N, 69°17'W; then northwest to 42°05'N, 70°02'W, then west to 42°04'N, 70°10'W; and then along the Massachusetts shoreline of Cape Cod Bay and Massachusetts Bay back to the point on Cape Ann at 42°39'N, 70°37'W.

WHALESSOUTH BOUNDARY

The area (NAD 83) extends from the shoreline east to longitude 80°51.6'W with the southern and northern boundaries at latitude 30°00'N and 31°27'N., respectively.

WHALESNORTH

(operates year round)



NOAA Chart #13009

EXAMPLE REPORT: Please follow the format exactly as outlined below.

WHALESSOUTH//
M/412345678//
A/BEAGLE/NVES//
B/270810Z MAR//
E/250//
F/17.0//
H/270810ZMAR/3030N/08052W//
I/MAYPORT/271215Z MAR//
L/RL/17.0//

For additional information or if you are encountering problems with transmission contact the [U.S. Coast Guard](#).

WARNING

DO NOT INCLUDE ADDITIONAL MESSAGES OR CHARACTERS IN YOUR REPORT. FAILURE TO FOLLOW THE EXACT FORMAT WILL CAUSE THE MSR COMPUTER SYSTEM TO REJECT YOUR REPORT.

EXAMPLE REPORT: Please follow the format exactly as outlined below.

WHALESNORTH//
M/487654321//
A/CALYPSO/NRUS//
B/031401Z APR//
E/345//
F/15.5//
H/031410Z APR/4104N/06918W//
I/BOSTON/032345Z APR//
L/WP/4104N/06918W/15.5//
L/WP/4210N/06952W/15.5//
L/WP/4230N/07006W/15.5//