



U.S. DEPARTMENT OF  
**ENERGY**



# *Update on the American Recovery and Reinvestment Act*

*Federal Facilities Task/Force  
State and Tribal Governments Working Group  
May 28, 2009*

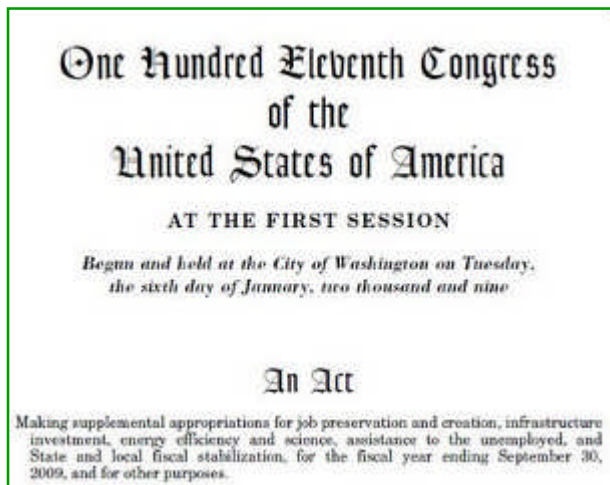
**Cynthia Anderson**  
*Deputy Chief Operations Officer  
Recovery Act Program Manager  
Office of Environmental Management*



**EM** *Environmental Management*

safety ❖ performance ❖ cleanup ❖ closure

# American Recovery and Reinvestment Act of 2009 (Recovery Act)



- Signed into law on Feb 17, 2009
- Unprecedented Congressional action
- Priority at highest Federal levels
  - President
  - Congress
  - Secretary of Energy
  - Assistant Secretary for Environmental Management
- Unprecedented transparency and accountability
- \$6 billion in *additional* funding for EM to be used by 2011



**EM** Environmental Management

safety ❖ performance ❖ cleanup ❖ closure

[www.em.doe.gov](http://www.em.doe.gov)

# Recovery Act: EM's Approach

- Focusing on “shovel ready” projects contributing to footprint reduction and small site completions
- Requiring rapid deployment of resources with transparency of activities and accountability for results
- Developing dedicated EM project team
  - Safety/Operational Readiness
  - Project Management
  - Budget
  - Contracting
  - Regulatory
  - Communications

YOUR MONEY *at* WORK  
RECOVERY.GOV

**Contributes to jobs creation, EM life cycle cost savings, and energy parks**

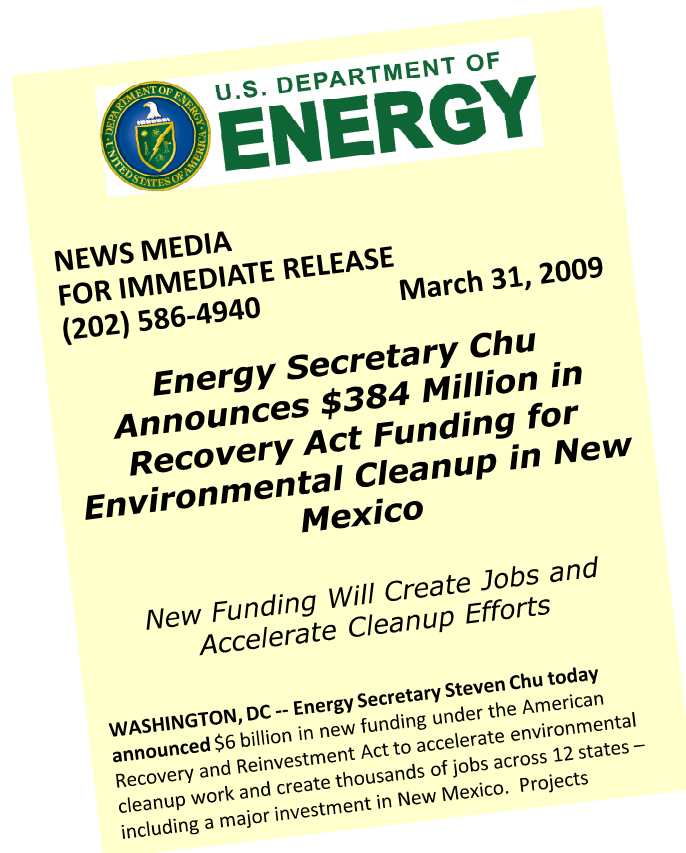


**EM** Environmental Management

safety ❖ performance ❖ cleanup ❖ closure

[www.em.doe.gov](http://www.em.doe.gov)

# Recovery Act Status



- **Opportunities at 17 sites in 12 states (totaling \$6B through FY 2011)**
  - Recovery Act proposals developed by sites with site priorities in mind
  - Flexibility in work scope, but first and foremost, Recovery Act funds are about job creation
- **EM Recovery Act plans announced on March 31, 2009**
- **Funds released to sites: April/May 2009**

# The EM Recovery Act Program

## Demonstrated Results

### Rocky Flats Cleanup

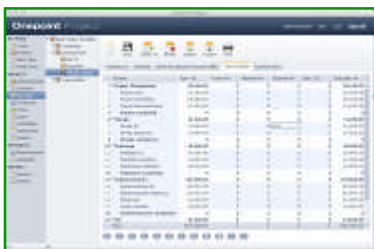


### Fernald Cleanup



- Extraordinary opportunity for EM to achieve new success—***Recovery Act funding entrusted to EM because of demonstrated results***
- Funds intended to create near-term environmental cleanup jobs, with lasting economic benefits
- Recovery Act Program Office being established in EM to support Recovery Act success

# Recovery Act Implementation Principles



To achieve our goals of job creation and footprint reduction as quickly as possible, we are evaluating site cleanup plans using five guiding principles:

1. Validated cost and schedule baselines are in place
2. Contracts are in place
3. Regulatory requirements are agreed to and achievable
4. Technologies are proven and readily available
5. Significant accomplishments can be achieved by the end of FY 2011



# Recovery Act Project Priorities



- **Scope that can most readily be accelerated to take advantage of Recovery Act funds**
  - Soil and groundwater remediation
  - Radioactive waste disposition (e.g., TRU waste and Low Level Waste)
  - Facility decommissioning
- **Site closure and EM completion**
- **Reduce the EM footprint**
  - Across the country
  - Within a site



**EM** Environmental Management

safety ❖ performance ❖ cleanup ❖ closure

[www.em.doe.gov](http://www.em.doe.gov)

# Recovery Act: Potential Examples of Site Performance Measures



Jobs Saved



Waste Shipped

- Cubic Meters of Radioactive Waste Disposed
- Acres of Land Remediated
- Buildings Demolished
- Facility Square Footage Deactivated and Decommissioned
- Gallons of Water Treated
- Jobs Created/Preserved



**EM** Environmental Management

safety ❖ performance ❖ cleanup ❖ closure

[www.em.doe.gov](http://www.em.doe.gov)



# *Project Management*

- Adhering to DOE Order 413.3 Program and Project Management for the Acquisition of Capital Assets
- Implementing Headquarters Reviews
- Definitization of Cost & Schedule Project Baselines
- Updating Risk Management Planning
- Established Integrated Project Teams



*EM Environmental Management*

safety ❖ performance ❖ cleanup ❖ closure

*[www.em.doe.gov](http://www.em.doe.gov)*

# *Small Business Strategy*

- Ambitious goals to maximize inclusion of :
  - Small Business
  - Small Disadvantaged Business
  - Woman-owned Small Business
  - HUB-Zone Small Business
  - Service-Disabled Veteran-Owned Small Business



**EM** *Environmental Management*

safety ❖ performance ❖ cleanup ❖ closure

*[www.em.doe.gov](http://www.em.doe.gov)*

# Contracting Status

- Utilizing existing prime contracts for most of work
- Considerable subcontracting expected; small business goals
- Competing IDIQ tasks and some new scope
- Contract actions supported by EMCBC/Corps of Engineers independent cost estimating
- IGCE performed for Non-M&O Contract Actions > \$100K
- Independent Review & Validation (IR&V) performed for EM prime M&O contracts
- Formal Work Authorization and Contract Modifications



*EM* Environmental Management

safety ❖ performance ❖ cleanup ❖ closure

[www.em.doe.gov](http://www.em.doe.gov)

# Contracting Status (cont.)

- 21 Contract Modifications issued as of 5/27/09
- Target date for definitization for majority of contracts is 9/30/09
  - Pre-definitization costs limited to 24% of ARRA project value
  - No fee payments prior to definitization
- Contract Management Risk Mitigation
  - ARRA addenda to contract management plans tied to OMB Guidance and IG Advisory Report



**EM** Environmental Management

safety ❖ performance ❖ cleanup ❖ closure

[www.em.doe.gov](http://www.em.doe.gov)

# Recovery Act Allotment Status

	<b>ALLOTMENTS</b>
<b>Alloted</b>	
Brookhaven National Laboratory	42,355,000
Moab	108,350,000
West Valley	73,875,000
Oak Ridge - Non Defense	78,800,000
Non-Defense Program Direction	1,200,000
Oak Ridge - ETTP	118,200,000
Ur/Th Payments	68,950,000
Office of River Protection	326,035,000
Hanford	1,634,500,000
Idaho	467,875,000
Oak Ridge	231,110,000
Savannah River	1,615,400,000
Carlsbad	172,375,000
Defense Program Direction	9,960,000
Paducah	20,000,000
Portsmouth	20,000,000
Mound	19,700,000
Oak Ridge Y-12	327,000,000
Energy Technology Engineering Center	38,300,000
Stanford Linear Accelerator Center	7,925,000
Separations Process Research Unit	31,775,000
Argonne	35,000,000
UED&D Program Direction	630,000
<b>Total Allotments</b>	<b>5,449,315,000</b>

	<b>ALLOTMENTS</b>
<b>Remaining</b>	
Paducah	58,800,000
Portsmouth	98,200,000
Energy Technology Engineering Center	15,875,000
Argonne National Laboratory	63,500,000
Los Alamos National Laboratory	211,775,000
Nevada	44,325,000
Program Direction	58,210,000
<b>Pending Allotments</b>	<b>550,685,000</b>
<b>Total RA Funding</b>	<b>6,000,000,000</b>

# Communications

## EM Recovery Act Program Office

### Website

[www.em.doe.gov/emrecovery](http://www.em.doe.gov/emrecovery)

### Email

[emrecovery@em.doe.gov](mailto:emrecovery@em.doe.gov)

### Phone

202-586-2083

## DOE Recovery Act Clearinghouse

### Website

[RecoveryClearinghouse.energy.gov](http://RecoveryClearinghouse.energy.gov)

### Email

[RecoveryClearinghouse@hq.doe.gov](mailto:RecoveryClearinghouse@hq.doe.gov)

### Phone

1-888-DOE-RCVY



**EM** Environmental Management

safety ❖ performance ❖ cleanup ❖ closure

[www.em.doe.gov](http://www.em.doe.gov)

# *Path Forward*

- Support to sites during project execution
- Deployment of on-site representatives
- Definitization of Cost & Schedule Project Baselines
- Negotiation of Contract modifications
- Monitor Project Execution and Performance
- Continuous engagement with Stakeholders and Regulators



*EM Environmental Management*

safety ❖ performance ❖ cleanup ❖ closure

*[www.em.doe.gov](http://www.em.doe.gov)*