



U.S. Department  
of Transportation  
**Federal Aviation  
Administration**

# **ADMINISTRATOR'S FACT BOOK**

**April 2006**

Produced by:  
Assistant Administrator for Financial Services

Website:  
[http://www.faa.gov/about/office\\_org/headquarters\\_offices/aba/admin\\_factbook/](http://www.faa.gov/about/office_org/headquarters_offices/aba/admin_factbook/)



## **FAA MISSION**

*To provide the safest, most efficient  
aerospace system in the world.*

## **FAA VISION**

*To improve continuously the safety and  
efficiency of aviation, while being  
responsive to our customers and  
accountable to the public*

# Table of Contents

<b>FAA Vision and Mission.....</b>	<b>Inside Front Cover</b>
<b>FAA Values.....</b>	<b>Inside Back Cover</b>

## Safety

Aviation Accidents by Type of Operations .....	3*
Aviation Accident Rates by Type of Operation.....	4*
Airspace Incidents by Incident Type.....	5*
Airspace Incident Rates by Incident Type.....	6*
NTSB U.S. Transportation Fatalities .....	7*

## FAA Air Traffic

FAA Air Traffic Activity .....	8*
Air Route Traffic Control Center Activity.....	9*
50 Busiest FAA Air Traffic Control Towers.....	10*
50 Busiest Approach Control Facilities.....	12*
Automated Flight Service Station Activity .....	14*

## Airports

Number of U.S. Airports .....	16
National Airspace Systems Delays.....	17*

## Aircraft

U.S. Air Carrier Activity.....	18
U.S. General Aviation Activity.....	19
Aircraft Certification Service .....	20

## Industry Trends

Scheduled U.S. Air Carrier Traffic & Fin. Trends.....	21
Aviation Forecasts.....	22

## Commercial Space Transportation

AST Licensing and Industry Activity.....	23*
U.S. Commercial Space Launch Schedule .....	24*

## Airmen

Active Pilots and Nonpilots.....	25
FAA Organizational Chart.....	Center Fold*
FAA Regional Boundaries Map .....	28

## FAA Resources

FAA Employment .....	29
FAA Percent Minority and Women Employment.....	30
FAA Major Work Force Employment .....	31*
Labor Relations.....	32
FAA Finances .....	33
FAA NAS Operational Facilities .....	34

## Organization

FAA Officials—Washington Headquarters.....	35*
FAA Officials—Major Field Organizations .....	38*
FAA Officials—International Offices .....	40
FAA Flight Plan 2006-2010 .....	41*

## Aviation Accidents by Type of Operation

Type of Operation	Year	Jan	Feb	Mar	Apr	May	Jun	Jul	Aug	Sep	Oct	Nov	Dec	Year Total
Large Air Carrier	2004	0	2	2	5	2	1	4	3	3	4	1	3	30
	2005	4	1	5	1	3	7	1	4	1	5	3	4	39
Commuter	2004	0	1	0	1	0	0	0	0	1	1	0	0	4
	2005	0	1	0	1	1	0	0	0	1	0	0	2	6
Air Taxi	2004	5	1	9	3	3	3	7	8	10	2	8	7	66
	2005	4	9	3	3	2	6	11	5	5	8	5	5	66
General Aviation	2004	92	108	100	133	157	156	201	171	163	148	96	92	1,617
	2005	95	86	120	142	166	188	200	196	161	127	92	97	1,670
Rotorcraft*	2004	7	13	8	14	16	16	26	25	16	13	12	12	178
	2005	11	11	13	11	20	24	24	19	28	15	10	7	193

\* Part 135 and US registered general aviation rotorcraft accidents.

Note: Preliminary data and subject to change.  
As of: 3/10/06

Source: AAI-200  
(202) 267-3279

## Aviation Accident Rates by Type of Operation

Type of Operation	2002		2003		2004		2005		% Chg 05-04	
	Number	Rate	Number	Rate	Number	Rate	Number	Rate	Number	Rate
Large Air Carriers.....	41	.24	54	.32	30	.16	39	.20	30%	25%
Commuter.....	7	2.56	2	0.62	4	1.32	6	2.00	50%	52%
Air Taxi.....	60	2.06	74	2.55	66	2.04	66	2.02	0%	-1%
General Aviation.....	1,715	6.69	1,739	6.75	1,617	6.49	1,669	6.83	3%	5%

▶ Accident Rates are per 100,000 Flight Hours. Flight hours compiled by FAA  
 Rotorcraft rates discontinued, currently under review

Note: 2005 data preliminary.  
 As of: 03/15/2006

Source: NTSB  
[www.nts.gov/aviation/stats.htm](http://www.nts.gov/aviation/stats.htm)

## Airspace Incident Rates by Incident Type

Incident Type									Percent Change	
	2002		2003		2004		2005		2004 - 2005 (4)	
	Number	Rate	Number	Rate	Number	Rate	Number	Rate	Number	Rate
Operational Errors (1).....	1,041	.66	1,211	.78	1,215	.78	1,506	.77	24%	-1%
Pilot Deviations (2).....	1,922	1.17	2,673	1.62	2,618	1.65	2,279	1.48	-13%	-10%
Surface Incidents (3).....	1,009	1.55	924	1.47	939	1.40	799	1.28	-15%	-9%

(1) Per 100,000 Facility Activities

(2) Per 100,000 Flight Activities

(3) Per 1,000,000 Airport Operations

(4) Calculations use fifteen decimal places for rates (rounded two places for display).

Note: 2005 data preliminary and subject to change.

Source: ATO-A (IT)

(202) 385-4802

As of: 01/15/2006

## Airspace Incidents by Incident Type

Incident Type	Year	Jan	Feb	Mar	Apr	May	Jun	Jul	Aug	Sep	Oct	Nov	Dec	Year Total
Near Midair Collisions	2004	11	16	10	8	14	10	19	10	9	12	15	11	145
	2005	8	6	15	15	9	11	15	12	15	9	11	10	136
Pilot Deviations	2004	158	152	210	217	215	249	270	272	228	281	211	155	2,618
	2005	136	153	189	188	168	208	208	262	203	200	209	155	2,279
Operational Errors	2004	74	79	91	77	100	114	125	110	112	113	122	98	1,215
	2005	89	215	149	91	104	116	131	130	131	125	115	110	1,506
Vehicle Pedestrian Deviations	2004	16	20	23	27	21	29	19	22	20	17	27	22	263
	2005	16	18	26	23	23	15	23	29	31	26	26	20	276
Surface Incidents	2004	48	65	72	83	95	126	107	105	50	62	72	54	939
	2005	45	59	70	70	63	58	68	97	74	75	65	55	799
Runway Incursions*	2004	13	27	30	25	20	39	32	37	17	21	32	17	310
	2005	18	22	28	26	33	29	36	35	30	33	21	25	336

Note: Preliminary data and subject to change.

Source: ATO-A (IT)

(202) 385-4802

\*ATO-S

(202) 385-4788

As of: 01/15/2006

\*As of: 12/31/2005

# National Transportation Safety Board

## 2003-2004 U.S. Transportation Fatalities

	2003	2004 <sup>1</sup>
<b>Highway</b>		
Passenger cars.....	19,725	19,091
Light Trucks and Vans.....	12,546	12,602
Pedestrians.....	4,774	4,641
Motorcycles.....	3,714	4,008
Pedalcycles <sup>2</sup> .....	629	725
Medium and heavy trucks.....	726	761
Buses.....	41	41
All Other <sup>3</sup> .....	729	767
<b>Total.....</b>	<b>42,884</b>	<b>42,636</b>
<b>Grade Crossings</b> <sup>4</sup>	<b>332</b>	<b>368</b>
<b>Rail</b>		
Intercity <sup>5</sup>		
Trespassers and nontrespassers..... <sup>6</sup>	567	584
Employees and contractors.....	25	29
Passengers on trains.....	3	3
Light, heavy, and commuter rail. <sup>7</sup> .....	165	186
<b>Total.....</b>	<b>760</b>	<b>802</b>
<b>Marine</b>		
Recreational Boating.....	703	676
Cargo Transport.....	19	25
Commercial fishing. <sup>8</sup> .....	43	39
Commercial Passengers.....	27	17
<b>Total.....</b>	<b>792</b>	<b>757</b>
<b>Aviation</b>		
General Aviation.....	632	556
Airlines.....	22	14
Air Taxi.....	42	65
Commuter.....	2	0
Foreign/Unregistered. <sup>9</sup> .....	12	16
<b>Total.....</b>	<b>710</b>	<b>651</b>
<b>Pipeline</b>		
Gas.....	12	19
Liquids.....	0	5
<b>Total.....</b>	<b>12</b>	<b>24</b>
<b>GRAND TOTAL.....</b>	<b>45,158</b>	<b>44,870</b>

<sup>1</sup> 2004 preliminary estimates. Aviation data from NTSB; all other from DOT. <sup>2</sup> Includes bicycles or other cycles. <sup>3</sup> Includes vehicle occupant fatalities in vehicle types; ex. farm or construction equipment. <sup>4</sup> Grade crossing fatalities not counted separately for determining the grand totals because they are included in the highway and rail categories, as appropriate. <sup>5</sup> Data reported to Federal Rail Administration (FRA). <sup>6</sup> Includes persons on railroad property with and without permission. Does not include motor vehicle occupants killed at grade crossings. <sup>7</sup> Data reported to the FTA. Fatalities for commuter rail operations may also be reported to the FRA and may be included in the intercity railroad fatalities. <sup>8</sup> Refers to only operational fatalities. <sup>9</sup> Includes non-U.S. registered aircraft involved in accidents in the U.S.



# Air Traffic

## FAA Air Traffic Activity (In Thousands)

---

<b>Aircraft Handled by</b>	<b>Jan-Dec</b>	<b>Jan-Dec</b>
<b>FAA ARTCC's</b>	<b>2005*</b>	<b>2004</b>
Air Carrier.....	24,871	24,289
Air Taxi.....	10,007	10,029
General Aviation.....	8,313	8,375
Military.....	3,991	4,072
<b>TOTAL....</b>	<b>47,182</b>	<b>46,765</b>

### Airport Operations

#### Logged by FAA Towers

Air Carrier.....	13,251	12,930
Air Taxi.....	10,768	10,796
General Aviation.....	20,482	21,373
Military.....	1,689	1,805
<b>TOTAL....</b>	<b>46,190</b>	<b>46,904</b>

### Instrument Operations

#### Logged by FAA Towers

Air Carrier.....	14,622	14,299
Air Taxi.....	12,913	12,981
General Aviation.....	17,643	18,026
Military.....	2,851	3,017
<b>TOTAL....</b>	<b>48,029</b>	<b>48,323</b>

### Flight Services

#### Logged by: \*\*

	<b>Jan-Dec</b>	<b>Jan-Dec</b>
	<b>2005</b>	<b>2004</b>
Flight Service Stations.....	895	893
Automated Flight Service Stations.....	22,522	25,922
<b>TOTAL....</b>	<b>23,417</b>	<b>26,815</b>

---

\*Preliminary

As of: 03/15/06

\*\*As of: 03/15/06

Source: APO-130

(202) 267-3350

ATO-A/AJA

(202) 385-4734

# Air Route Traffic Control Center Activity

CY 2004 Rank	Center	Aircraft Handled (000's)	
		Jan-Dec 2005*	Jan-Dec 2004
1	Atlanta, GA.....	3,236	3,138
2	Cleveland, OH.....	3,020	3,102
3	New York, NY.....	3,074	3,048
4	Chicago, IL.....	2,898	2,998
5	Leesburg, VA	3,079	2,935
6	Indianapolis, IN.....	2,884	2,881
7	Miami, FL.....	2,501	2,438
8	Jacksonville, FL.....	2,557	2,415
9	Memphis, TN.....	2,308	2,297
10	Fort Worth, TX.....	2,134	2,213
11	Los Angeles, CA.....	2,288	2,188
12	Minneapolis, MN.....	2,142	2,180
13	Houston, TX.....	2,122	2,107
14	Kansas City, KS.....	2,083	2,056
15	Nashua, NH	1,869	1,883
16	Denver, CO.....	1,836	1,836
17	Albuquerque, NM.....	1,762	1,765
18	Oakland, CA.....	1,703	1,688
19	Salt Lake City, UT.....	1,552	1,522
20	Seattle, WA.....	1,306	1,309
21	Anchorage, AK.....	623	613
22	Guam ** .....	206	153

\*Preliminary

\*\*Center Radar Approach Control (CERAP)

As of: 3/15/2006

Source: APO-130  
(202) 267-9947

# 50 Busiest FAA Airport Traffic Control Towers

CY 2004 Rank	Tower and State	Airport Operations (000's)	
		Jan-Dec 2005*	Jan-Dec 2004
1	Chicago/O'Hare Int'l., IL.....	972	992
2	Atlanta International, GA.....	980	965
3	Dallas/Ft. Worth Int'l., TX.....	718	814
4	Los Angeles Int'l, CA.....	651	655
5	Phoenix Sky Harbor Int'l, AZ.....	564	587
6	Las Vegas/McCarran Int'l, NV.....	614	576
7	Denver International, CO.....	568	567
8	Minneapolis-St. Paul Int'l, MN.....	532	541
9	Detroit Metro Wayne Co., MI.....	523	523
10	Houston/G Bush Intercont'l, TX.....	564	521
11	Covington/Cincinnati Int'l, KY.....	495	516
12	Washington Dulles Int'l, VA.....	553	503
13	Philadelphia Int'l, PA.....	536	475
14	Charlotte/Douglas Int'l, NC.....	523	468
15	Van Nuys, CA.....	411	449
16	Newark International, NJ.....	441	440
17	Boston/Logan Int'l, MA.....	422	422
18	Salt Lake City Int'l, UT.....	455	413
19	La Guardia, NY.....	406	406
20	Miami International, FL.....	281	396
21	Memphis International, TN.....	395	381
22	Santa Ana/John Wayne, CA.....	367	373
23	Seattle Tacoma Int'l, WA.....	342	359
24	Orlando/Sanford, FL.....	320	357
25	Denver/Centennial.....	346	357

\*Preliminary

As of: 3/15/2006

# 50 Busiest FAA Airport Traffic Control Towers

CY 2004 Rank	Tower and State	Airport Operations (000's)	
		Jan-Dec 2005*	Jan-Dec 2004
26	San Francisco Int'l, CA.....	354	353
27	Phoenix-Deer Valley, AZ.....	378	340
28	Metropolitan Oakland Int'l.....	348	340
29	Chicago Midway, IL.....	291	340
30	Long Beach/Daugherty, CA.....	358	339
31	Pittsburgh International, PA.....	269	336
32	John F. Kennedy Int'l, NY.....	363	333
33	Orlando International, FL.....	360	326
34	Honolulu International, HI.....	331	320
35	Fort Lauderdale/Hollywood, FL.....	331	315
36	Anchorage International, AK.....	316	309
37	Baltimore/Wash. Int'l, MD.....	310	309
38	Daytona Beach Int'l, FL.....	218	301
39	Seattle/Boeing Field, WA.....	300	299
40	Lambert-St. Louis Int'l, MO.....	297	290
41	Tulsa/Riverside, OK.....	347	285
42	Prescott/E. A. Love Field, AZ.....	237	273
43	Washington National, DC.....	278	271
44	Grand Forks International, ND.....	244	266
45	Cleveland Hopkins Int'l, OH.....	260	264
46	Portland International, OR.....	262	263
47	Mesa/Falcon Field, AZ.....	270	262
48	Tucson International, AZ.....	285	253
49	Dallas/Love Field, TX	234	249
50	Raleigh-Durham Int'l, NC	249	249

# 50 Busiest Radar Approach Control Facilities

CY 2004 Rank	Facilities/State	Instrument Ops (000s)	
		Jan-Dec 2005*	Jan-Dec 2004
1	Southern Calif. TRACON, CA.....	2,129	2,124
2	New York TRACON, NY.....	2,066	2,067
3	Potomac TRACON, DC.....	1,887	1,845
4	North California TRACON, CA.....	1,612	1,598
5	Chicago TRACON, IL.....	1,425	1,502
6	Atlanta TRACON, GA.....	1,393	1,387
7	Dallas/Ft Worth, TRACON, TX.....	1,221	1,306
8	Miami International, FL.....	919	914
9	Houston TRACON, TX.....	923	881
10	Denver TRACON, CO.....	771	771
11	Phoenix TRACON, AZ.....	780	765
12	Detroit TRACON, MI.....	715	722
13	Boston TRACON, MA.....	730	692
14	Minneapolis TRACON, MN.....	669	681
15	Philadelphia International, PA.....	738	672
16	Covington/Cincinnati Int'l, KY.....	637	668
17	San Juan CERAP, PR.....	607	658
18	Las Vegas TRACON, NV.....	689	632
19	Orlando International, FL.....	637	610
20	Charlotte/Douglas Int'l, NC.....	652	601
21	Tampa International, FL.....	576	571
22	Seattle/Tacoma TRACON, WA.....	549	559
23	Salt Lake City TRACON, UT.....	547	525
24	Honolulu Control Facility, HI .....	549	507
25	Daytona Beach Int'l, FL.....	424	495

\* Preliminary

Source: APO-130  
(202) 267-9947

As of: 03/15/06

# 50 Busiest Radar Approach Control Facilities

CY 2004 Rank	Facilities/State	Instrument Ops (000's)	
		Jan-Dec 2005*	Jan-Dec 2004
26	Memphis International, TN.....	463	457
27	St Louis TRACON, MO.....	460	454
28	Pittsburgh International, PA.....	372	431
29	Jacksonville Int'l, FL.....	430	415
30	Cleveland Hopkins Int'l, OH.....	369	387
31	Pensacola TRACON, FL.....	327	383
32	San Antonio Int'l, TX.....	386	382
33	Port Columbus Int'l, OH.....	384	375
34	Palm Beach International, FL.....	361	366
35	Dayton International, OH.....	344	360
36	Washington National, DC.....	358	353
37	Corpus Christi, TX.....	346	351
38	Portland TRACON, OR.....	333	331
39	Anchorage TRACON, AK.....	323	330
40	Raleigh-Durham Int'l, NC.....	319	326
41	Baltimore-Washington Int'l, MD....	323	323
42	Indianapolis International, IN.....	332	322
43	Milwaukee/Gen Mitchell Intl, WI....	315	315
44	Nashville International, TN.....	310	310
45	Austin, TX.....	319	307
46	Norfolk International, VA.....	297	303
47	Kansas City International, MO.....	285	289
48	Wichita Mid Continent, KS	262	274
49	Louisville Intl/Standiford, KY.....	273	271
50	Tulsa International, OK	272	259

# Automated Flight Service Stations Activity

CY 2005 Rank	AFSS/State	Flight Services (000's)		
		Jan-Mar 2006*	Jan-Mar 2005	Jan-Dec 2005
1	Miami AIFSS, FL.....	219	313	1,046
2	St. Petersburg, FL.....	245	257	901
3	Leesburg, VA.....	140	145	721
4	Lansing, MI.....	147	129	641
5	Fort Worth, TX.....	149	154	637
6	Prescott, AZ.....	137	145	575
7	Princeton, MN.....	137	99	539
8	Macon, GA.....	119	131	532
9	Raleigh, NC.....	104	118	520
10	Seattle, WA.....	109	106	516
11	Denver, CO.....	102	116	488
12	Conroe, TX.....	124	119	473
13	Bridgeport, CT.....	88	72	470
14	Kankakee, IL.....	116	95	469
15	San Angelo, TX.....	85	131	459
16	Green Bay, WI.....	76	82	444
17	Kenai, AK.....	74	82	441
18	Nashville, TN.....	116	97	432
19	McAlester, OK.....	82	110	430
20	Anniston, AL.....	79	118	428
21	Albuquerque, NM.....	131	94	425
22	Williamsport, PA.....	74	93	413
23	Columbia, MO.....	85	88	396
24	Hawthorne, CA.....	57	108	386
25	Oakland, CA.....	77	96	384
26	Altoona, PA.....	62	86	382
27	Anderson, SC.....	97	87	379
28	Gainesville, FL.....	67	100	372
29	Jonesboro, AR.....	76	78	356
30	Reno, NV.....	59	88	348

\* Preliminary

Source: ATX-400  
(202) 385-4734

Automated International Flight Service Station--AIFSS

As of: 04/10//06

# Automated Flight Service Stations Activity

CY 2005 Rank	AFSS/State	Flight Services (000's)		
		Jan-Mar 2006*	Jan-Mar 2005	Jan-Dec 2005
31	Terre Haute, IN.....	46	76	344
32	St. Louis, MO.....	59	71	320
33	Rancho Murieta, CA.....	60	83	317
34	Riverside, CA.....	38	89	311
35	Burlington, VT.....	41	62	310
36	Cedar City, UT.....	77	68	304
37	Cleveland, OH.....	54	61	297
38	New York, NY.....	65	51	296
39	McMinnville, OR AFSS.....	34	67	295
40	Millville, NJ.....	0	90	290
41	Honolulu, HI.....	67	71	286
42	Elkins, WV.....	40	61	270
43	San Diego, CA.....	75	65	268
44	Wichita, KS.....	52	63	268
45	Bangor, ME.....	50	51	260
46	Dayton, OH.....	45	55	257
47	De Ridder, LA.....	59	70	250
48	Fort Dodge, IA.....	37	49	232
49	San Juan, PR IAFSS.....	49	62	229
50	Huron, SD.....	38	48	221
51	Grand Forks, ND.....	16	68	219
52	Buffalo, NY.....	52	37	215
53	Louisville, KY.....	39	48	205
54	Great Falls, MT.....	34	37	196
55	Greenwood, MS.....	27	52	165
56	Fairbanks, AK.....	26	30	159
57	Jackson, TN.....	36	37	155
58	Columbus, NE.....	23	39	155
59	Boise, ID.....	24	32	153
60	Casper, WY.....	31	30	145
61	Juneau, AK.....	16	16	126



# Airports

## Number of U.S. Airports <sup>1</sup> (As of December 31)

	2005	2004	2003
<b>Total Airports</b> .....	19,854	19,820	19,581
Public Use Airports.....	5,270	5,288	5,286
# with Paved Runways.....	3,942	3,941	3,938
# with Unpaved Runways....	1,328	1,347	1,348
# with Lighted Runways.....	4,045	4,037	4,026
# with Unlighted Runways...	1,225	1,251	1,260
Private Use Airports.....	14,584	14,532	14,295r
# with Paved Runways.....	4,836	4,771	4,678
# with Unpaved Runways....	9,748	9,761	9,617
# with Lighted Runways.....	1,346	1,301	1,223
# with Unlighted Runways..	13,238	13,231	13,072
<b>Public use airports abandoned...</b>	14	10	19
<b>Private use airports abandoned.</b>	115	117	214
<b>Certificated Airports*</b> .....	575	599	628

<sup>1</sup> Includes civil and joint-use civil-military airports, heliports, STOLports, and seaplane bases in the U.S. and its territories.

\* Certificated airports serve Air Carrier Operations with aircraft seating more than 9 passengers seats. (FAR Part 139).

r revised

As of: 03/15/06

Source: AAS-330  
(202) 267-8752

# National Airspace Total System Delays

Year	Jan	Feb	Mar	Apr	May	Jun	Jul	Aug	Sep	Oct	Nov	Dec	YTD Total
<b>2006*</b>	29,463	24,705											54,168
<b>2005</b>	32121	30176	34633	25887	30920	48922	58471	45328	32949	34221	34273	29766	437,667 r/
<b>2004</b>	28,104	32,274	34,001	32,459	50,800	52,121	46,894	43,770	30,412	37,271	35,234	32,446	455,786
<b>2003</b>	16,159	18,260	25,387	17,474	26,544	27,413	32,833	37,066	28,882	21,422	34,116	31,332	316,888
<b>2002</b>	14,158	13,821	20,020	24,027	28,533	33,770	32,304	29,056	24,493	25,266	17,712	22,489	285,649

Delays of 15 minutes or longer

r/ Revised

\* Preliminary information that is subjected to change

Source: ATT-220  
(703) 904-4470

As of: 03/15/06

# Aircraft

## U.S. Air Carrier Activity

	CY 2005	CY 2004	CY 2003
<b>Total Number of Aircraft<sup>1</sup>.....</b>	19,239	19,382	19,356
<b>Type of Carrier</b>			
Domestic, flag, supplemental, and cargo air carriers.....	7,668	7,720	7,579
Commuter Air Carriers and Air Taxis.....	11,571	11,662	11,777
<b>Total Number of Aircraft<sup>1</sup>.....</b>	19,239	19,382	19,356
<b>Type of Aircraft</b>			
Jet.....	9,880	9,673	9,235
Turboprop.....	2,994	3,179	3,281
Piston.....	3,745	3,949	4,269
Rotary Wing.....	2,620	2,581	2,571
<b>Air Carrier Traffic Statistics<sup>2</sup> (Millions)*</b>			
Passenger miles flown.....	795,038	752,358	674,192
Passenger enplanements.....	747	714	657
Ton miles.....	118,743	113,194	100,958
Aircraft miles flown.....	8,239	8,006	7,370
Passenger load factor <sup>3</sup>			
Domestic.....	77.2%	74.4%	72.6%
International.....	79.2%	79.1%	76.5%

<sup>1</sup> Source: Vital Information System

<sup>2</sup> Includes domestic and international scheduled and non-scheduled service, domestic, flag, supplemental, cargo air carriers and commuters

<sup>3</sup> Proportion of aircraft seating capacity that is sold.

As of: 3/15/06

Source: AFS-40  
(202) 385-4514  
\*BTS (K-25)  
(202) 366-8513

# U.S. General Aviation and Air Taxi Activity

## (Calendar Years)

	Estimated Active Aircraft (thousands)		Estimated Hours Flown (Millions)	
	2004	2003	2004	2003
<b>Total .....</b>	219.4	209.7	28.1	27.3
<b>By Type Aircraft</b>				
Piston.....	165.2	160.9	18.1	19.0
Turboprop.....	8.4	7.7	2.2	1.9
Jet.....	9.3	8.0	3.7	2.7
Rotary Wing.....	7.8	6.5	2.5	2.1
Other.....	5.9	6.0	0.2	0.3
Experimental.....	22.8	20.6	1.3	1.3
<b>By Type Flying</b>				
Corporate.....	10.2	10.5	2.8	3.2
Business.....	24.2	25.0	3.2	3.4
Personal.....	149.7	146.7	10.2	11.3
Instructional.....	13.1	12.7	4.0	4.4
Aerial Application.....	3.2	3.3	1.1	1.1
Aerial Observation.....	4.8	4.2	1.5	1.3
Aerial Other.....	0.8	0.8	0.1	0.1
External Load.....	0.2	0.2	0.1	0.1
Other Work.....	0.9	1.7	0.3	0.4
Sightseeing.....	1.1	0.9	0.2	0.2
Air Tours.....	0.4	0.2	0.2	0.2
Air Taxi.....	6.2	2.6	2.5	1.2
Air Medical Services...	1.6	0.9	0.6	0.5

AAI-220

As of: 03/13/06

(202) 267-8659

# Aircraft Certification Service

## Aircraft Certification Mission and Program Profiles

	FY 2005	FY 2004
Type Certificates/Supplemental Type Certificates Issued.....	967	984
Other Design Approvals Issued.....	12,126	14,146
Production Approvals (Including Amendments) Issued.....	2,547	2,582
Airworthiness Certificates Issued.....	957	831
New Airworthiness Directives (AD) Issued.....	496	417
New Designees (Representative of the Administrator) Appointed.....	747	792
Total Active Designees.....	4,634	4,761

As of: 03/15/06

# Industry Trends

## Scheduled U.S. Air Carrier Traffic\* and Financial\*\* Trends (In Billions)

	FY 2005	FY 2004	Numerical Change	Percent Change
<b>TRAFFIC</b>				
<b>ASM'S</b>				
Majors.....	906.31	870.19	36.12	4.2
Nationals.....	84.73	72.73	12.00	16.5
Regionals.....	12.07	10.47	1.60	15.3
<b>Totals.....</b>	<b>1003.11</b>	<b>953.39</b>	<b>49.72</b>	<b>5.2</b>
<b>RPM's</b>				
Majors.....	703.57	658.29	45.28	6.9
Nationals.....	62.71	52.73	9.98	18.9
Regionals.....	7.53	6.23	1.30	20.9
<b>Totals.....</b>	<b>773.81</b>	<b>717.25</b>	<b>56.56</b>	<b>7.9</b>
<b>Load Factor (in percent)</b>				
Majors.....	77.6%	75.6%	2.5	
Nationals.....	74.0%	72.5%	0.9	
Regionals.....	62.4%	59.5%	3.0	
<b>Totals.....</b>	<b>77.1%</b>	<b>75.2%</b>	<b>1.9</b>	
<b>FINANCIAL</b>				
<b>Revenues</b>				
Majors.....	\$129.68	\$116.66	\$13.02	11.2
Nationals.....	\$14.72	\$13.13	\$1.59	12.1
Regionals.....	\$1.08	\$0.94	\$0.14	15.1
<b>Totals.....</b>	<b>\$145.48</b>	<b>\$130.72</b>	<b>\$14.75</b>	<b>11.3</b>
<b>Expenses</b>				
Majors.....	\$131.43	\$116.64	\$14.79	14.8
Nationals.....	\$14.13	\$12.50	\$1.63	1.6
Regionals.....	\$1.09	\$0.90	\$0.19	0.2
<b>Totals.....</b>	<b>\$146.66</b>	<b>\$130.05</b>	<b>\$16.61</b>	<b>12.8</b>
<b>Operating Profit/Loss</b>				
Majors.....	(\$1.75)	\$0.02	(\$1.77)	
Nationals.....	\$0.59	\$0.63	(\$0.04)	
Regionals.....	(\$0.02)	\$0.03	(\$0.05)	
<b>Totals.....</b>	<b>(\$1.18)</b>	<b>\$0.67</b>	<b>(\$1.85)</b>	

\*Effective FY 2003, small certificated and commuter air carriers with aircraft size less than 60 seats are required to report traffic on DOT Form 41 instead of DOT Form 298C. As a result, traffic statistics for these carriers are now included in this report. Financial results for these carriers continue to be reported on Form 298C and are excluded from this report.

\*\*Effective FY 2003, Comair, Atlantic Coast Airlines, SkyWest Airlines, and ExpressJet started reporting financial results using DOT Form 41. Prior to FY 2003, these carriers reported their financial results using DOT Form 298C and were not included in this report.

Source: APO-110

# Aviation Forecasts

Estimated Forecast  
FY 2005 FY 2009

---

## FAA FACILITY WORKLOAD

### Aircraft Handled by FAA ARTCC's (Millions)

Air Carrier.....	25.0	27.4
Air Taxi/Commuter.....	10.1	11.2
General Aviation.....	8.4	8.8
Military.....	4.1	4.1
Total.....	47.5	51.5

### Operations Logged by FAA/Contract Towers (Millions)

Airport.....	63.1	67.1
Instrument.....	49.0	51.4

---

## CIVIL AVIATION ACTIVITY

### Certificated Route Air Carrier

Revenue Passenger Enplanements (Millions).....	587.3	640.1
Revenue Passenger Miles (Billions).....	709.1	805.6

<b>Air Carrier Aircraft</b> .....	4,974	5,412
-----------------------------------	-------	-------

### General Aviation Estimated

Hours Flown (Millions)*.....	28.3	32.2
Active Aircraft (Thousands)*.....	214.6	231.0

---

## ESTIMATED FUEL CONSUMED BY U.S. DOMESTIC CIVIL AVIATION (Millions of Gallons)

### Jet Fuel

Air Carrier.....	19,356	21,898
General Aviation.....	1,009	1,434

### Aviation Gas

Air Carrier.....	2	2
General Aviation.....	290	318

---

<b>Active Pilots (Thousands)*</b> .....	609,603	616,910
---	---------	---------

---

\*Calendar Year

As of: 3/31/06

Source: APO-110  
(202) 493-4236

# U.S. Commercial Space Transportation FAA Licensed Activity

	CY 2006 (Projected)	CY 2005	CY 2004
<b>Licensed Commercial Launches</b>			
<b>TOTAL</b>	<b>10 to 11</b>	<b>5</b>	<b>14</b>
<b>Number of Orbital Launches</b>	10	5	9
<b>Number of Suborbital Launches</b>	0 to 1	0	5
<b>By Launch Vehicle Type</b>			
Delta Family (Boeing Company)	2	0	0
Atlas Family (Lockheed Martin)	1	1	5
Pegasus (Orbital Sciences Corp.)	1	0	0
Taurus (Orbital Sciences Corp.)	0	0	1
Zenit 3SL (Sea Launch)	5	4	3
Falcon 1 (SpaceX)	1	0	0
SpaceShipOne (Scaled Composites)	0	0	5
other suborbital	0 to 1	0	0
<b>By Launch Site (Federal)</b>			
Cape Canaveral AF Station, FL	2	1	5
Vandenberg AFB, CA	1	0	1
Kwajalein / Marshall Islands	1	0	0
<b>By Launch Site (Commercial)</b>			
Pacific Ocean	5	4	3
Other Commercial	1 to 2	0	0
Mojave Airport, CA	0	0	5

Source: AST

As of: 3/13/06

(202) 267-7989



## United States Commercial Space Launch Schedule, CY 2006

(launch dates are subject to change)

Payload (Operator)/ Description	Launch Company/ Vehicle	Launch Date/ Launch Site (Status)
<i>Echostar 10</i> (U.S.) Communications Satellite	Sea Launch (Boeing Launch Services (BLS)) Zenit 3SL	February 15, 2006 Pacific Ocean Platform (Successful)
<i>Astra 1KR</i> (Luxembourg) Comm. Satellite	Lockheed Martin (International Launch Services) Atlas V	April 2006 Cape Canaveral Air Force Station, FL
<i>JCSat 9</i> (Japan) Comm. Satellite	Sea Launch (BLS) Zenit 3SL	April 2006 Pacific Ocean Platform
<i>GOES-N</i> (U.S.) Remote Sensing Satellite	The Boeing Company (BLS) Delta IV	May 2006 Cape Canaveral Air Force Station, FL
<i>Unannounced</i> (unannounced) Comm. Satellite	Sea Launch (BLS) Zenit 3SL	Summer 2006 Pacific Ocean Platform
<i>WorldView 1</i> (U.S.) Remote Sensing Satellite	The Boeing Company (BLS) Delta II	October 2006 Vandenberg Air Force Base, CA
<i>Unannounced</i> (unannounced) Comm. Satellite	Sea Launch (BLS) Zenit 3SL	Fall 2006 Pacific Ocean Platform
<i>C/NOrFS</i> (U.S.) Science Satellite	Orbital Sciences Pegasus XL	2006 Kwajalein, Marshall Islands
<i>Razaksat</i> (Malaysia) Comm. Satellite	SpaceX Falcon 1	2006 Kwajalein, Marshall Islands
<i>Unannounced</i> (unannounced) Comm. Satellite	Sea Launch (BLS) Zenit 3SL	Fall/Winter 2006 Pacific Ocean Platform

As of: 3/13/06

Source: AST  
(202) 267-7989

## Active Pilots and Nonpilots (As of 31 December)

	2005		2004	
	Total	Women	Total	Women
<b>Pilot-Total</b> .....	<b>609,325</b>	<b>36,584</b>	<b>618,633</b>	<b>37,243</b>
Student.....	87,213	9,717	87,910	9,857
Private.....	228,619	14,517	235,994	15,036
Commercial.....	120,614	7,315	122,592	7,421
Airline Transport.....	141,992	5,008	142,160	4,908
Other <sup>1</sup> .....	30,887	27	29,977	21
<b>Nonpilot-Total</b> <sup>2</sup> .....	<b>644,016</b>	<b>119,850</b>	<b>515,293</b>	<b>18,666</b>
Mechanic.....	320,293	6,152	317,111	5,932
Repairmen.....	40,030	2,108	39,231	2,039
Ground Instructor.....	74,378	5,612	73,735	5,500
Flight Engineer.....	57,756	1,986	59,376	2,007
Flight Attendant <sup>3</sup> .....	125,032	100,630	NA	NA
Other <sup>4</sup> .....	26,527	3,362	25,840	3,188
<b>Flight Instructor</b> .....	<b>90,555</b>	<b>6,067</b>	<b>89,596</b>	<b>5,970</b>

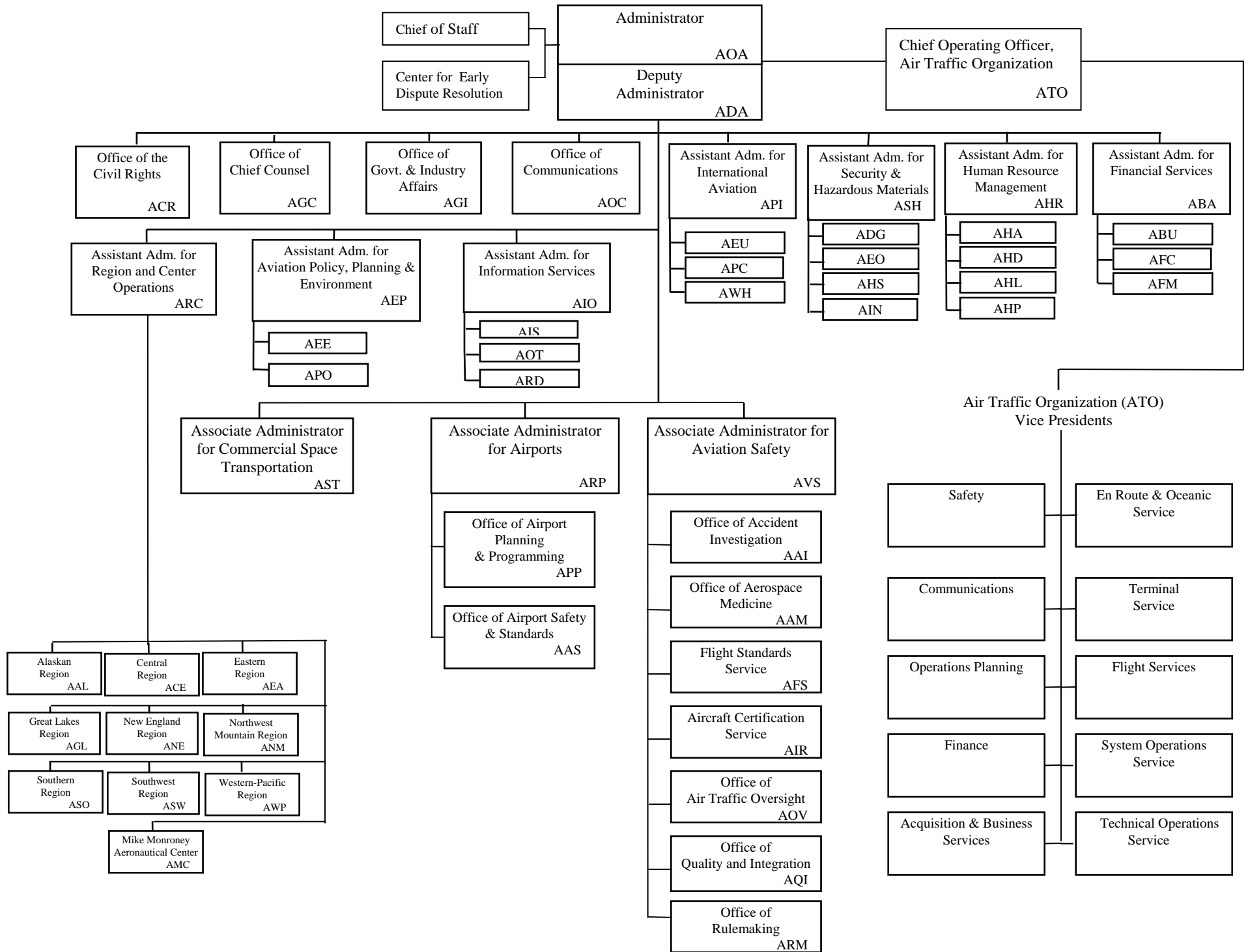
<sup>1</sup> Includes helicopter (only), glider (only), and recreational and sport pilot certificates. Include Glider pilots represents pilots who received a medical examination within the last 25 months. Lighter-than-air type ratings are no longer being issued.

<sup>2</sup> Excludes non-pilots 70 years old or over in all certificate types except flight engineers and flight navigators.

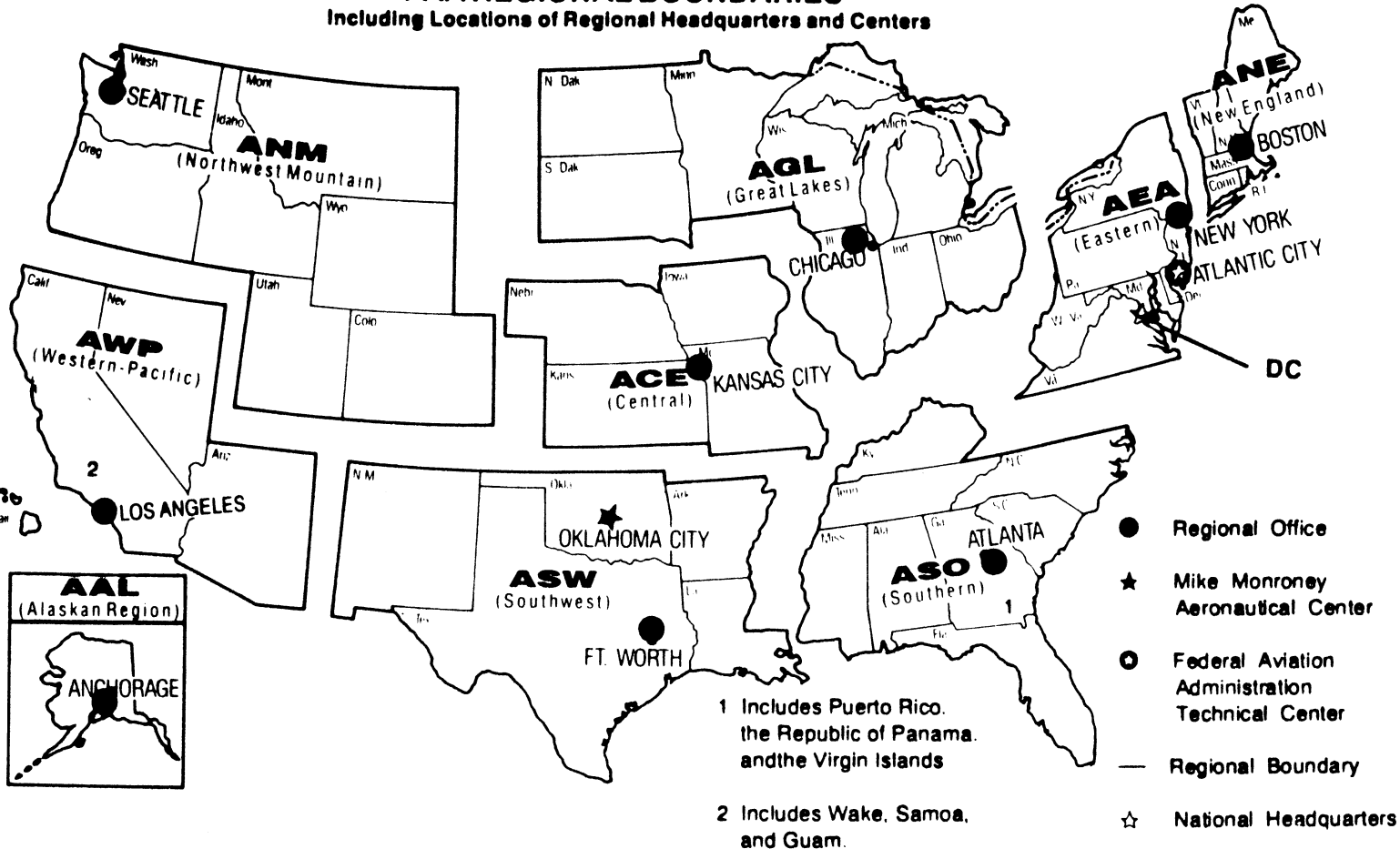
<sup>3</sup> Introduced in 2005

<sup>4</sup> Includes flight navigators, parachute riggers, and dispatchers.

# FEDERAL AVIATION ADMINISTRATION



**U.S. DEPARTMENT OF TRANSPORTATION  
Federal Aviation Administration  
FAA REGIONAL BOUNDARIES**  
Including Locations of Regional Headquarters and Centers



- Regional Office
- ★ Mike Monroney Aeronautical Center
- Federal Aviation Administration Technical Center
- Regional Boundary
- ☆ National Headquarters

1 Includes Puerto Rico, the Republic of Panama, and the Virgin Islands

2 Includes Wake, Samoa, and Guam.

# FAA Resources

## FAA Employment (Permanent Employees)<sup>1</sup>

	FY05	FY04
<b>Line of Business</b>		
Air Traffic Organization (ATO)* .....	35,008	36,328
Aviation Safety (AVS).....	6,335	6,570
Airports (ARP).....	473	480
Comm. Space Transportation (AST)....	54	55
Staff Offices** .....	3,860	3,896
<b>*</b>	<b>45,730</b>	<b>47,329</b>
<b>Region/Center/Headquarters (included in above total)</b>		
Aeronautical Center.....	3,390	1,561
Alaskan.....	1,305	1,330
Central.....	2,277	2,344
Eastern.....	5,074	5,220
Great Lakes.....	6,107	6,280
New England.....	1,785	1,861
Northwest Mountain.....	3,956	4,014
Southern.....	7,092	7,293
Southwest.....	5,076	5,259
Western-Pacific.....	5,091	5,114
Washington Headquarters (only) <sup>2</sup> .....	4,097	4,178
Washington Headquarters Field.....	n/a	1,709
Technical Center.....	1,245	1,166

<sup>1</sup> Full time permanent and part time permanent employees only.

<sup>2</sup> Washington Headquarters employees physically located in Orville/Wilbur Wright Buildings and surrounding areas (i.e. Portals, etc.).

\* ATO became effective October 2003. ATO includes ATS, ARA and AOZ .

\*\* Staff Offices include: ABA; ACR; AEP; AGC; AGI; AHR; AIO; AOC; APO; ARC; and ASH.

As of: 12/31/05

Source: AHP-100  
(202) 267-8257

# FAA Percent Minority & Female Employment<sup>1</sup>

Lines of Business/Region/Center/Headquarters	% Minority		%Female	
	FY05	FY04	FY05	FY04
Air Traffic Organization (ATO)* .....	18.6	18.3	20.1	20.3
Aviation Safety (AVS).....	19.8	19.1	28.8	28.4
Airports (ARP).....	27.5	27.5	40.8	39.0
Commercial Space Transportation (AST).....	46.3	45.5	31.5	30.4
Staff Offices.....	32.3	32.9	53.2	53.5
<b>Total</b>	<b>20.1</b>	<b>19.8</b>	<b>24.4</b>	<b>24.4</b>
Aeronautical Center.....	21.9	23.4	38.8	44.0
Alaskan.....	13.0	13.6	22.3	23.3
Central.....	14.6	14.9	25.0	25.6
Eastern.....	15.7	15.4	19.4	19.4
Great Lakes.....	11.7	11.5	20.4	20.4
New England.....	7.7	7.2	21.5	21.6
Northwest Mountain.....	12.6	12.9	22.4	22.3
Southern.....	22.0	21.6	19.7	19.7
Southwest.....	23.0	22.5	20.0	20.1
Western-Pacific.....	30.6	29.7	21.4	21.3
Washington Headquarters.....	34.1	34.3	43.6	43.4
Technical Center.....	21.9	21.6	31.9	31.4

<sup>1</sup> All FAA employees.

<sup>2</sup> Washington Headquarters employees physically located in FOB-10A and surrounding areas (i.e. Portals, Market Square, etc.).

\* ATO became effective October 2003. ATO includes ATS, ARA and AOZ.

As of: 12/31/05

Source: AHP-100  
(202) 267-8257

# Major Work Force Employment

	Employment*				
	FY 06	FY05	FY04	%Chg. FY06 - FY05	Actual Change
Air Traffic Controller Work Force ATCS** (bargaining unit employees)	16,633	16,651	17,070	-0.1%	-18
Traffic Management Coordinators** Operations Supervisors**	14,255	14,227	14,736	0.2%	28
Flight Service Stations (FSS)***	629	623	612	1.0%	6
	1,749	1,801	1,722	-2.9%	-52
Field Maintenance (210-211 only)	199	2,087	2,583	-90.5%	-1,888
Airports Work Force	N/A	7,265	7,253	0.2%	12
Aircraft Certification	N/A	466	472	-1.3%	-6
Flight Standards Work Force	N/A	1,104	1,141	-3.4%	-37
	N/A	4,408	4,564	-3.5%	-156

\* Full time permanent appointments (operations direct).

\*\* Included in Air Traffic Controller Work Force Total.

\*\*\* FSS employment reduction due to A-76 transfer to Lockheed Martin effective 10/04/05.

Note: FAA Staffing Standards Report entitled "Staffing Guide for Overhead and Supervisory Air Traffic Control Specialists in Field Facilities", signed December 2000, moved the STMCs from the Controller Work Force to Operations Oversight.  
N/A - Data Not Available

As of: 12/31/05

Source: AHP-100, IPPS/MIR  
(202) 267-9123

# Labor Relations

	BARGAINING UNITS	LABOR AGREEMENTS	EMPLOYEES REPRESENTED
<b>Unions.....</b>	<b>45</b>	<b>22</b>	<b>34,443</b>
AFGE.....	10	7	1,553
AFSCME (HQ).....	5	0	1,773
LIUNA.....	1	1	158
NAATS.....	1	1	169
NAGE.....	3	3	291
NATCA (AT).....	4	2	15,692
NATCA (AF).....	2	1	1,380
NATCA (Other).....	8	0	1,453
NFFE.....	3	2	671
PAACE.....	3	2	375
PASS (AF/AEA).....	1	1	7,247
PASS (AVN).....	1	1	330
PASS (AFS).....	2	1	3,212
PASS (AIR).....	1	0	139

- AFGE --American Federation of Government Employees
- AFSCME --American Federation of State, County, and Municipal Employees
- LIUNA --Laborer's International Union of North America
- NAATS --National Association of Air Traffic Specialists
- NAGE --National Association of Government Employees
- NACTA --National Air Traffic Controllers Association
- NFFE --National Federation of Federal Employees
- PAACE --Professional Association of Aeronautical Center Employees
- PASS --Professional Airway System Specialists

Source: AHL-400  
(202) 267-3548

As of: 02/18/06



## FAA Finances (In Millions of Dollars)

	FY 2005 <sup>1</sup>	FY 2006 <sup>2</sup>	FY 2007
	Actual	Enacted	Request
<b>Budget Authority (BA)</b>			
Grants-In-Aid (Obligation Lim/Approp).....	3,472	3,515	2,750
Other Budget Authority.....	25	0	0
Research, Engineering, & Development.....	130	137	130
Facilities and Equipment.....	2,525	2,555	2,503
Operations.....	7,707	7,955	8,366
Flight Service Station A-76 Competition	0	149	0
<b>Total.....</b>	<b>13,859</b>	<b>14,310</b>	<b>13,749</b>
<b>Obligations Incurred--Operations</b>			
<b>Appropriation by Line of Business</b>			
Air Traffic Organization (ATO).....	6,341	6,550	6,704
Aviation Safety (AVS)	904	949	982
Commercial Space Transportation (AST)....	11	12	12
Staff Offices (SO).....	434	445	668
Flight Service Station A-76 Competition		149	0
<b>Total.....</b>	<b>7,691</b>	<b>8,104</b>	<b>8,366</b>
<b>Airport Grant Obligations (NET)</b>			
Primary Airports & Cargo.....	1,021	1,008	589
States/Territories/Insular/Alaska Supp.....	698	706	500
Carryover Entitlements.....	416	432	432
Discretionary Fund.....	859	850	912
Small Airport Fund.....	389	428	215
<b>Total.....</b>	<b>3,383</b>	<b>3,424</b>	<b>2,648</b>
<b>Total FAA Outlays.....</b>	<b>13,839</b>	<b>14,422</b>	<b>14,820</b>
<b>Trust Fund Receipts from Excise Taxes and Interest</b>			
Transportation of Persons by Air	7,061	7,381	7,817
Transportation of Property.....	461	583	616
Use of International Air facilities.....	1,922	1,866	2,044
Aviation Fuel Commercial Use .....	354	498	517
Aviation Fuel (Other Than Gas).....	478	280	304
Aviation Gasoline.....	38	42	44
Total Tax Revenue.....	10,314	10,651	11,341
Interest revenue.....	429	438	446
<b>Total Tax &amp; Interest Revenue.....</b>	<b>10,743</b>	<b>11,089</b>	<b>11,787</b>

Numbers may not add due to rounding. <sup>1</sup> FY05 reflects across-the-board rescission of 0.80 percent per P.L. 108-44

and includes hurricane supplemental funding.

<sup>2</sup> FY 06 reflects 1.0 percent across-the-board rescission and hurricane supplemental for \$40.6M in Facilities and Equipment per P.L. 109-148.

ATS/ARA are combined into the new ATO structure.

As of: 03/15/06

Source: ABU-100

(202) 267-5060

# FAA NAS Operational Facilities

(As of December 31)

	2004r/	2003	2002
<b>NAS Operational Facilities<sup>1</sup></b> .....	<b>41,082</b>	<b>40,997</b>	<b>40,746</b>
Communications.....	14,383	14,277	14,194
Automation.....	3,964	4,057	4,049
Environment.....	6,194	6,505	6,494
Navigation.....	11,122	11,131	11,104
Surveillance.....	1,882	1,894	1,871
Weather.....	3,537	3,133	3,034
<b>Air Traffic Control Facilities<sup>2</sup></b>			
Air Route Traffic Control Center.....	21	21	21
Airport Traffic Control Tower.....	517	449	449
Flight Service <sup>3</sup> .....	76	76	76
Flight Service Stations.....	16	16	16
Automated Flight Service Stations...	60	60	60

<sup>1</sup> Excludes non-federal facilities and foreign facilities.

<sup>2</sup> Included in NAS operational facilities.

<sup>3</sup> Flight Service include Flight Service Stations and Automated Flight Service Station

r/ Revised

As of: 6/30/05

Source: AOP-200  
(202) 267-5288

# FAA Officials

## Washington Headquarters

Routing Symbol	Officials
<b>AOA</b> .....	<b>Administrator</b> <b>Marion C. Blakey, 202-267-3111</b>
*	Michael O'Malley, Chief of Staff, 202-267-7416 Louise E. Maillett, Senior Counsel to AOA, 202-267-7417
<b>ADA</b> .....	<b>Deputy Administrator</b> <b>Bobby Sturgell, 202-267-8111</b>
	Howard Swancy, Senior Advisor to ADA, 202-267-8111
<b>ATO</b> .....	<b>Chief Operating Officer, Air Traffic Organization</b> <b>Russell G. Chew, 202-493-5602</b>
*	Acquisition & Business Service Vice President, James H. Washington, 202-267-7222 Communications Services Vice President, Sandra M. Sanchez, 202-493-5154 Flight Services Vice President, James H. Washington, 202-385-7500 En Route & Oceanic Services Vice President, Richard L. Day, 202-385-8501 Finance Services Vice President, Eugene D. Juba, 202-267-3022 Operations Planning Services
*	Vice President, Vickie Cox, Acting, 202-267-7111 System Operations Services Vice President, Michael A. Cirillo, 202-267-8558 Safety Services Vice President, William S. Davis, 202-493-5882 Terminal Services Vice President, David B. Johnson, 202-385-8801 Technical Operations Services Vice President, Steven B. Zaidman, 202-267-8181
*	Joint Planning & Development Office Director, Bob Pearce, Acting, 202-220-3310
<b>ABA</b> .....	<b>Assistant Administrator for Financial Services</b> <b>Ramesh K. Punwani, CFO, 202-267-9105</b>
	Deputy, John F. Hennigan, 202-267-8928
<b>ABU</b> .....	<i>Office of Budget</i> <i>Director, Alex Keenan, 202-267-8010</i>
<b>AFC</b> .....	<i>Office of Financial Controls</i> <i>Director, Carl Burrus, 202-267-7140</i>
<b>AFM</b> .....	<i>Office of Financial Management</i> <i>Director, Tim Lawler, 202-267-3018</i>
<b>ACR</b> .....	<b>Assistant Administrator for Civil Rights</b> <b>Fanny Rivera, 202-267-3254</b>
	Deputy, Barbara A. Edwards, 202-267-3264
<b>AEP*</b> .....	<b>Asst. Admin. for Aviation Policy, Planning &amp; Environment</b> <b>Nancy LoBue, Acting, 202-267-3927</b>
	Deputy, Nancy LoBue, 202-267-7954

\* Updated this issue  
As of: 03/31/06

Source: ABA-1  
(202) 267-9105

# FAA Officials

## Washington Headquarters--(Cont)

Routing Symbol	Officials
AEE	<i>Office of Environment and Energy</i> <i>Director, Carl Bureson, 202-267-3576</i>
APO	<i>Office of Aviation Policy and Plans</i> <i>Director, Nan Shellabarger, 202-267-3274</i>
AGC	<b>Chief Counsel</b> <b>Andrew B. Steinberg, 202-267-3222</b>
*	Deputy Chief Counsel for Policy and Adjudication James W. Whitlow, 202-267-3773
*	Deputy Chief Counsel for Operations Thomas Romig, 202-267-3773
AGI	<b>Asst. Administrator for Government &amp; Industry Affairs</b> <b>David Balloff, 202-267-3277</b> Deputy, Daniel J. Hickey, 202-267-8211
AHR	<b>Asst. Administrator for Human Resource Management</b> <b>Ventris C. Gibson, 202-267-3456</b> Deputy, Mary Ellen Dix, 202-267-3850 Deputy for Strategic Labor, Joseph N. Miniace, 202-267-3979
AHA	<i>Office of the Accountability Board</i> <i>Director, Maria Fernandez-Greczmiel, 202-267-3065</i>
AHD	<i>Office of Corporate, Learning &amp; Development</i> <i>Director Darlene Freeman, 202-267-9041</i>
AHL	<i>Office of Labor &amp; Employee Relations</i> <i>Director, Melvin Harris, 202-267-3979</i>
AHP	<i>Office of Personnel</i> <i>Director, Sue A. Engelhardt, 202-267-3850</i>
AIO*	<b>Assistant Administrator for Information Services</b> <b>David M. Bowen, CIO, 202-493-4570</b> Deputy, Walter Iwanow, 202-493-4570
AIS	<i>Office of Information Systems Security</i> <i>Director, Michael F. Brown, 202-267-7104</i>
AOT	<i>Office of Information Technology Optimization and Performance Tracking</i> <i>Director, Thomas O'Keefe, 202-493-4629</i>
ARD	<i>Office of Information Technology Research and Development</i> <i>Chief Technology Officer, Mark T. Powell, 202-385-8150</i>
AOC	<b>Assistant Administrator for Communications</b> <b>Greg Martin, 202-267-3883</b>
*	Deputy, Geoffrey M. Basye, 202-267-3458 Deputy, External Communications, Laura Brown, 202-267-3883 Deputy, Internal Communications, Gerald Lavey, 202-267-9499
API	<b>Asst. Administrator for International Aviation</b> <b>Joseph Bogosian, 202-385-8900</b>
ARC*	<b>Assistant Administrator for Regions/Center Operations</b> <b>Ruth Leverenz, 202-267-7369</b> Deputy, Vacant, 202-267-7369
ALO*	Aviation Logistics Organization Director, John R. Block, 202-267-7369
ASH	<b>Ruth Leverenz, 202-267-7369</b> <b>Lynne A. Osmus, 202-267-7211</b> Deputy, Claudio Manno, 202-267-7211
ADG	<i>Office of Hazardous Materials</i> <i>Director, William Wilkening, Jr., 202-267-9864</i>
AEO*	<i>Office of Emergency Operations and Communications</i> <i>Director, Chris Rocheleau, 202-267-8075</i>
AHS	<i>Office of Operations</i> <i>Director, Thomas D. Ryan, 202-267-7211</i>

# FAA Officials

## Washington Headquarters--(Cont.)

Routing Symbol	Officials
<i>AIN</i> .....	<i>Office of Internal Security and Investigations</i> <i>Director, Bruce Herron, 202-267-7714</i>
<b>ARP*</b> .....	<b>Associate Administrator for Airports</b> <b>Catherine M. Lang, Acting, 202-267-9471</b> <i>Deputy, Catherine M. Lang, 202-267-8738</i>
<i>AAS</i> .....	<i>Office of Airport Safety and Standards</i> <i>Director, David L. Bennett, 202-267-3053</i>
<i>APP</i> .....	<i>Office of Airport Planning &amp; Programming</i> <i>Director, Dennis E. Roberts, 202-267-8775</i>
<b>AST</b> .....	<b>Assoc. Adm. for Commercial Space Transportation</b> <b>Patricia Grace Smith, 202-267-7793</b> <i>Deputy, Dr. George C. Nield, 202-267-7848</i>
<b>AVS</b> .....	<b>Associate Administrator for Aviation Safety</b> <b>Nicholas A. Sabatini, 202-267-3131</b> <i>Deputy, Peggy Gilligan, 202-267-7804</i>
<i>AAI</i> .....	<i>Office of Accident Investigation</i> <i>Director, Steven B. Wallace, 202-267-9612</i>
<i>AAM*</i> .....	<i>Office of Aviation Medicine</i> <i>Director, Frederick Tilton, MD, 202-267-3535</i>
<i>AFS</i> .....	<i>Flight Standards Service</i> <i>Director, James Ballough, 202-267-8237</i>
<i>AIR</i> .....	<i>Aircraft Certification Service</i> <i>Director, John J. Hickey, 202-267-8235</i>
<i>AOV</i> .....	<i>Office of Air Traffic Oversight</i> <i>Director, J. David Canoles, 202-267-5202</i>
<i>AQI</i> .....	<i>Quality and Integration</i> <i>Director, Vi Lipski, 202-493-5860</i>
<i>ARM</i> .....	<i>Office of Rulemaking</i> <i>Director, Anthony F. Fazio, 202-267-9677</i>

Duty Officer

(202) 267-3333

# FAA Officials

## Major Field Organizations

Routing Symbol	Officials
<b>AAL</b> .....	<b>Alaskan Region, Regional Administrator</b> <b>Patrick N. Poe, 907-271-5645</b> 222 West 7th Avenue, Box 14 Anchorage, Alaska 99513-7587 Duty Officer, 907-271-5936
<b>ACE</b> .....	<b>Central Region, Regional Administrator</b> <b>Christopher Blum, 816-329-3050</b> 901 Locust Kansas City, Missouri 64106 Duty Officer, 816-329-3000
<b>ACT</b> .....	<b>William J. Hughes Technical Center, Director</b> <b>Anne Harlan, Ph.D., 609-485-6641</b> Atlantic City International Airport New Jersey 08405 Duty Officer, 609-485-6482
<b>AEA</b> .....	<b>Eastern Region, Regional Administrator</b> <b>Manny Weiss, 718-553-3000</b> 1 Aviation Plaza 159-30 Rockaway Blvd. Jamaica, New York 11434-4809 Duty Officer, 718-553-3100
<b>AGL</b> .....	<b>Great Lakes Region, Regional Administrator</b> <b>Christopher Blum, 847-294-7294</b> 2300 East Devon Avenue Des Plaines, Illinois 60018 Duty Officer, 847-294-8400
<b>AMC</b> .....	<b>Mike Monroney Aeronautical Center, Director</b> <b>Lindy Ritz, 405-954-4521</b> 6500 South MacArthur Oklahoma City, Oklahoma 73125 Duty Officer, 405-954-3583

# FAA Officials

## Major Field Organizations--(Cont.)

Routing Symbol	Officials
<b>ANE</b> .....	<b>New England Region, Regional Administrator</b> <b>Amy Lind Corbett, 781-238-7020</b> 12 New England Executive Park Burlington, Massachusetts 01803 Duty Officer, 781-238-7001
<b>ANM</b> .....	<b>Northwest Mountain Region, Regional Administrator</b> <b>Douglas R. Murphy, 425-227-2001</b> 1601 Lind Avenue, S.W. Renton, Washington 98055-4056 Duty Officer, 425-227-2000
<b>ASO</b> .....	<b>Southern Region, Regional Administrator</b> <b>Carolyn Blum, 404-305-5000</b> 1701 Columbia Avenue College Park, Georgia 30337 Duty Officer, 404-305-5180
<b>ASW</b> .....	<b>Southwest Region, Regional Administrator</b> <b>Ava L. Wilkerson, 817-222-5001</b> 2601 Meacham Blvd. Ft. Worth, Texas 76137-4298 Duty Officer, 817-222-5006
<b>AWP</b> .....	<b>Western-Pacific Region, Regional Administrator</b> <b>William C. Withycombe, 310-725-3550</b> 15000 Aviation Boulevard Hawthorne, California 90261 Duty Officer, 310-725-3300

# FAA Officials

---

## International Area Offices

---

Routing Symbol	Officials
<b>AEU</b> .....	<b>Europe, Africa, &amp; Middle East Area Office, Director</b> <b>Paul Feldman, 011-322-508-2700</b> American Embassy, Brussels PSC 82 Box 002 APO AE 09724-1011
<b>ALC</b> .....	<b>Latin America &amp; Caribbean Area Office, Director</b> <b>Joaquin Archilla, 305-716-3300</b> 8600 NW 36th Street Miami, FL 33166
<b>APC*</b> .....	<b>Asia-Pacific Area Office, Director</b> <b>Nancy Graham, 011-65-6540-4114</b> American Embassy 27 Napier Road Singapore 258508



**FEDERAL AVIATION ADMINISTRATION  
FLIGHT PLAN 2006-2010**

**INCREASED SAFETY**

**Goal:** *Achieve the lowest possible accident rate and constantly improve safety.*

**Objectives:**

1. Reduce the commercial airline fatal accident rate.
2. Reduce the number of fatal accidents in general aviation.
3. Reduce the risk of runway incursions.
4. Ensure the safety of commercial space launches.
5. Enhance the safety of FAA's air traffic systems.

**Performance Targets:**

Obj. 1 Reduce the airline fatal accident rate by 80% from the 1994-1996 baseline to a three-year rolling average rate of 0.010 per 100,000 departures by FY 2007.

Obj. 1 Reduce the three-year rolling average fatal accident rate below 0.010 per 100,000 departures by FY 2010.

Obj. 2 By FY 2009, reduce the number of general aviation and nonscheduled Part 135 fatal accidents to no more than 319 (from 385, which represents the average number of fatal accidents for the baseline period of 1996-1998).

Obj. 2 By FY 2009, reduce accidents in Alaska for general aviation and all Part 135 operations from the 2000-2002 average of 130 accidents per year to no more than 99 accidents per year.

Obj. 3 By FY 2010, reduce Category A and B (most serious) runway incursions to a rate of no more than 0.450 per million operations.

Obj. 4 No fatalities, serious injuries, or significant property damage to the uninvolved public during licensed space launch and reentry activities.

Obj. 5 By FY 2010, reduce Category A and B (most serious) operational errors to a rate of no more than 3.18 per million activities.

Obj. 5 By FY 2010, apply Safety Risk Management to at least 22 significant changes in the NAS.

**GREATER CAPACITY**

**Goal:** *Work with local governments and airspace users to provide capacity in the United States airspace system that meets projected demand in an environmentally sound manner.*

**Objectives:**

1. Increase capacity to meet projected demand.
2. Increase or improve airspace capacity in the eight major metropolitan areas and corridors that most affect total system delay: For FY 2006, those areas are: New York, Philadelphia, South Central Florida, Chicago, Washington/Baltimore, Atlanta, Los Angeles Basin, and San Francisco Bay area.
3. Increase on-time performance of scheduled carriers.
4. Address environmental issues associated with capacity enhancements.

**Performance Targets:**

Obj. 1 Achieve an average daily airport capacity of 104,338 arrivals and departures per day by 2008 and maintain through FY 2010 at the 35 OEP airports.

Obj. 1 Commission as many as eight new runway projects, increasing the annual service volume of the 35 OEP airports by at least 1% annually, measured as a five-year moving average, through FY 2010.

Obj. 1 Sustain adjusted operational availability at 99.5% for the reportable facilities that support the 35 OEP airports through FY 2010.

Obj. 2 Achieve an average daily airport capacity for the eight major metropolitan areas of 68,750 arrivals and departures per day by 2010.

Obj. 3 Through FY 2010, maintain an 87.4% on-time arrival for all flights arriving at the 35 OEP airports, no more than 15 minutes late due to NAS related delays.

Obj. 4 Reduce the number of people exposed to significant noise by 1% per year through FY 2010, as measured by a three-year moving average, from the three-year average for calendar year 2000-2002.

Obj. 4 Improve aviation fuel efficiency per revenue plane-mile by 1% per year through FY 2010, as measured by a three-year moving average, from the three-year average for calendar year 2000-2002.

## INTERNATIONAL LEADERSHIP

**Goal:** *increase the safety and capacity of the global civil aerospace system in an environmentally sound manner.*

**Objectives:**

1. Promote improved safety and regulatory oversight in cooperation with bilateral, regional, and multilateral aviation partners.
2. Promote seamless operations around the globe in cooperation with bilateral, regional, and multilateral aviation partners.

**Performance Targets:**

Obj. 1 BY FY 2010, continue to reduce the five-year rolling average commercial air carrier fatal accident rate in key regions or countries experiencing substantial growth in aviation operations by 10% from the 2000-2005 baseline.

Obj. 1 Conclude at least eight (new or expanded) bilateral safety agreements that will facilitate an increase in the ability to exchange aviation products and services by 2010.

Obj. 1 Secure a yearly increase of 20% in external funding for international aviation activities from the United States and international government organizations, multilateral banks, and industry.

Obj. 2 By FY 2010, expand the use of Global Positioning System-based technologies and procedures to five more countries.

## ORGANIZATIONAL EXCELLENCE

**GOAL:** *Ensure the success of the FAA's mission through stronger leadership, a better-trained and safer workforce, enhanced cost-control measures, and improved decision-making based on reliable data.*

**Objectives:**

1. Make the organization more effective with stronger leadership, increased commitment of individual workers to fulfill organization-wide goals, and a better prepared, better trained, safer, diverse workforce.
2. Improve financial management while delivering quality customer service.
3. Make decisions based on reliable data to improve our overall performance and customer satisfaction.

**Performance Targets:**

Obj. 1 Increase Employee Attitude Survey scores in the areas of management effectiveness and accountability by at least 5%.

Obj. 1 Reduce the time it takes to fill mission-critical positions by 25% over the FY 2003 baseline.

Obj. 1 Reduce the total workplace injury and illness case rate to no more than 2.85 per 100 employees by the end of FY 2006, representing a cumulative 3% annual reduction from the FY 2003 baseline (3.12) set in the Safety, Health and Return to Employment (SHARE) Presidential initiative.

Obj. 1 Reduce grievance processing time by 25%.

Obj. 1 Maintain air traffic controller annual hiring within 5% of the Air Traffic Controller Workforce Hiring Plan.

Obj. 2 Close out 85% of eligible cost reimbursable contracts during each fiscal year.

Obj. 2 Each FAA organization will contribute at least one measurable and significant cost reduction and/or productivity improvement activity each year, including but not limited to, cost efficiencies in the areas of: Strategic sourcing for selected products and services; Complete consolidation of facilities and services such as accounting offices, real property management, helpdesks, and Web services; and, Elimination or reduction of FAA use of obsolete technology by either removing from service or transferring from federal operation 100 NavAids.

Obj. 2 Obtain an unqualified opinion on the agency's financial statements (Clean Audit with no material weaknesses) each fiscal year.

Obj. 3 By FY 2008, 90% of major system acquisition investments are within 10% of annual budget and maintain through FY 2010.

Obj. 3 By FY 2008, 90% of major system acquisition investments are on schedule and maintain through FY 2010.

Obj. 3 Increase agency scores on the American Customer Satisfaction Index.

Obj. 3 Achieve zero cyber security events that significantly disable or degrade FAA services.