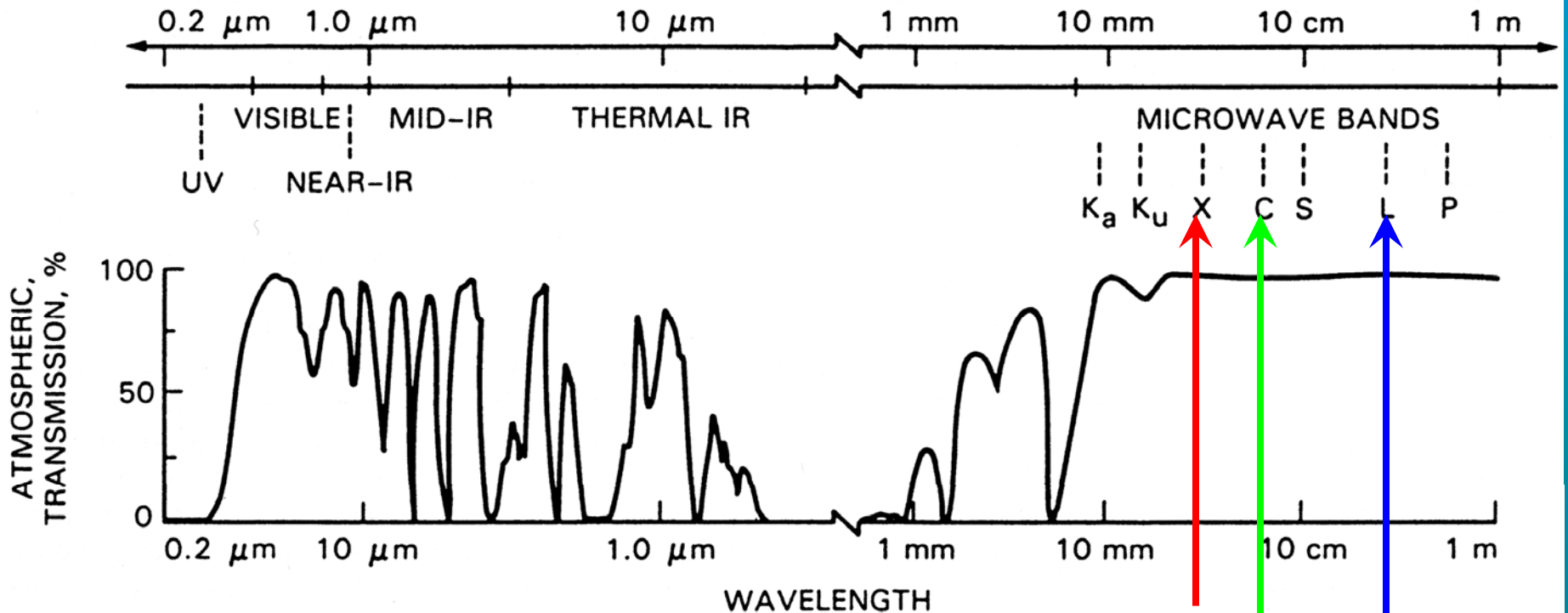




Space Based Geodesy Using InSAR

Chuck Wicks

Transmission of Radar Through Atmosphere

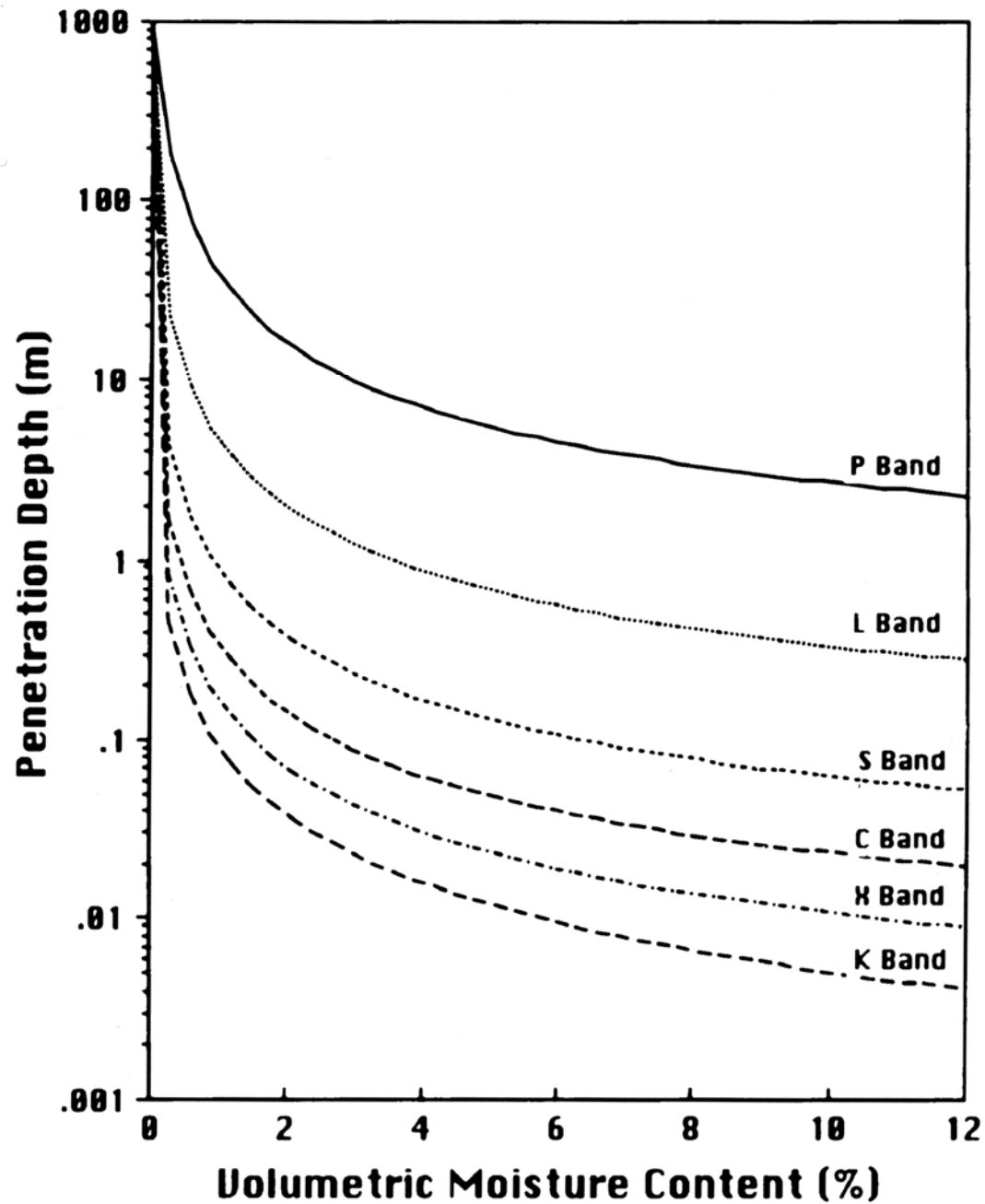


TerraSARX

ENVISAT, RADARSAT, ERS1-2

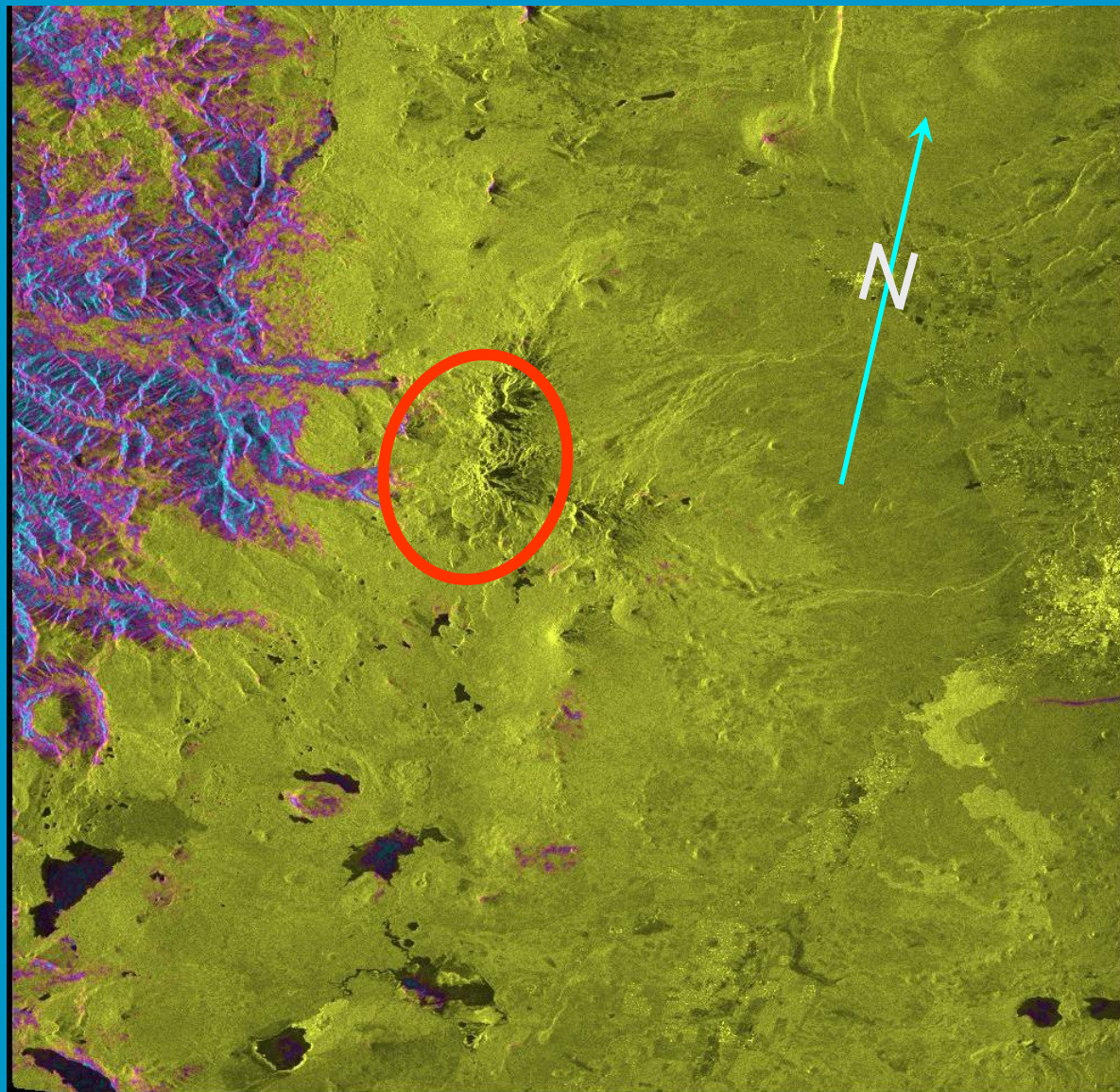
ALOS, JERS1

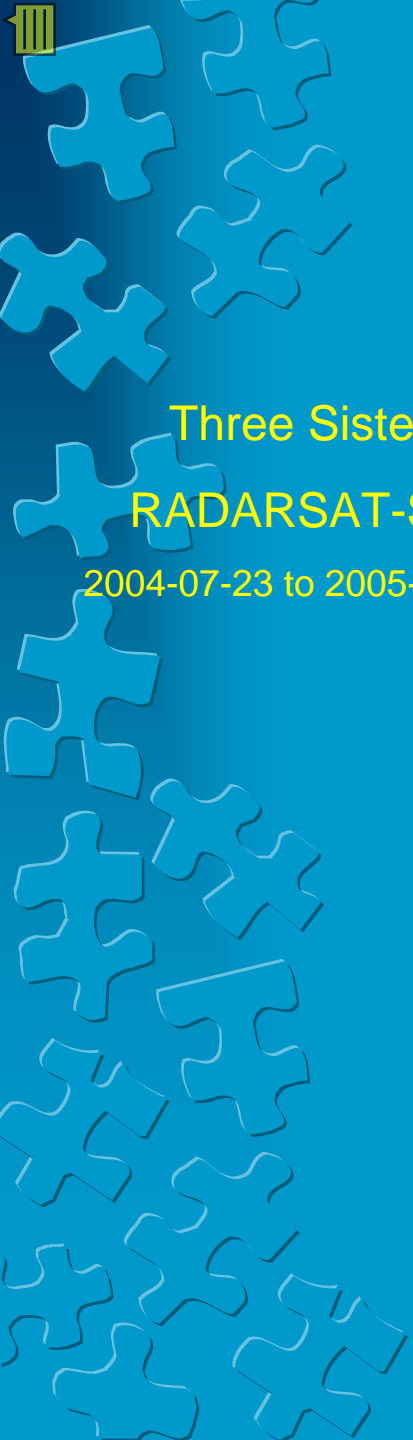
A Little Wet Snow
Attenuates C-Band
Radar... L-Band
Does Better





Three Sisters
RADARSAT-ST5
2004-07-23 to 2004-08-16

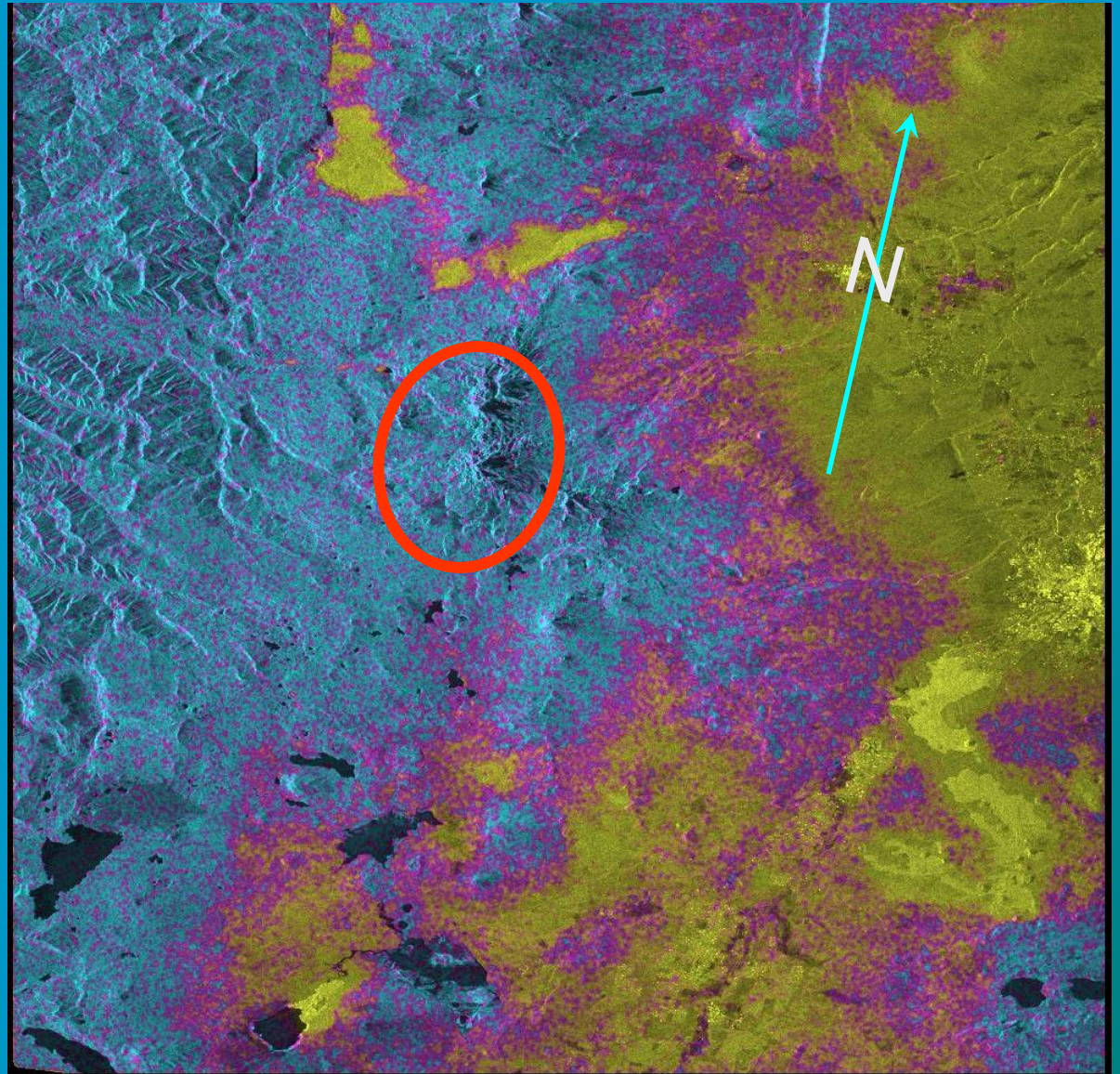




Three Sisters

RADARSAT-ST5

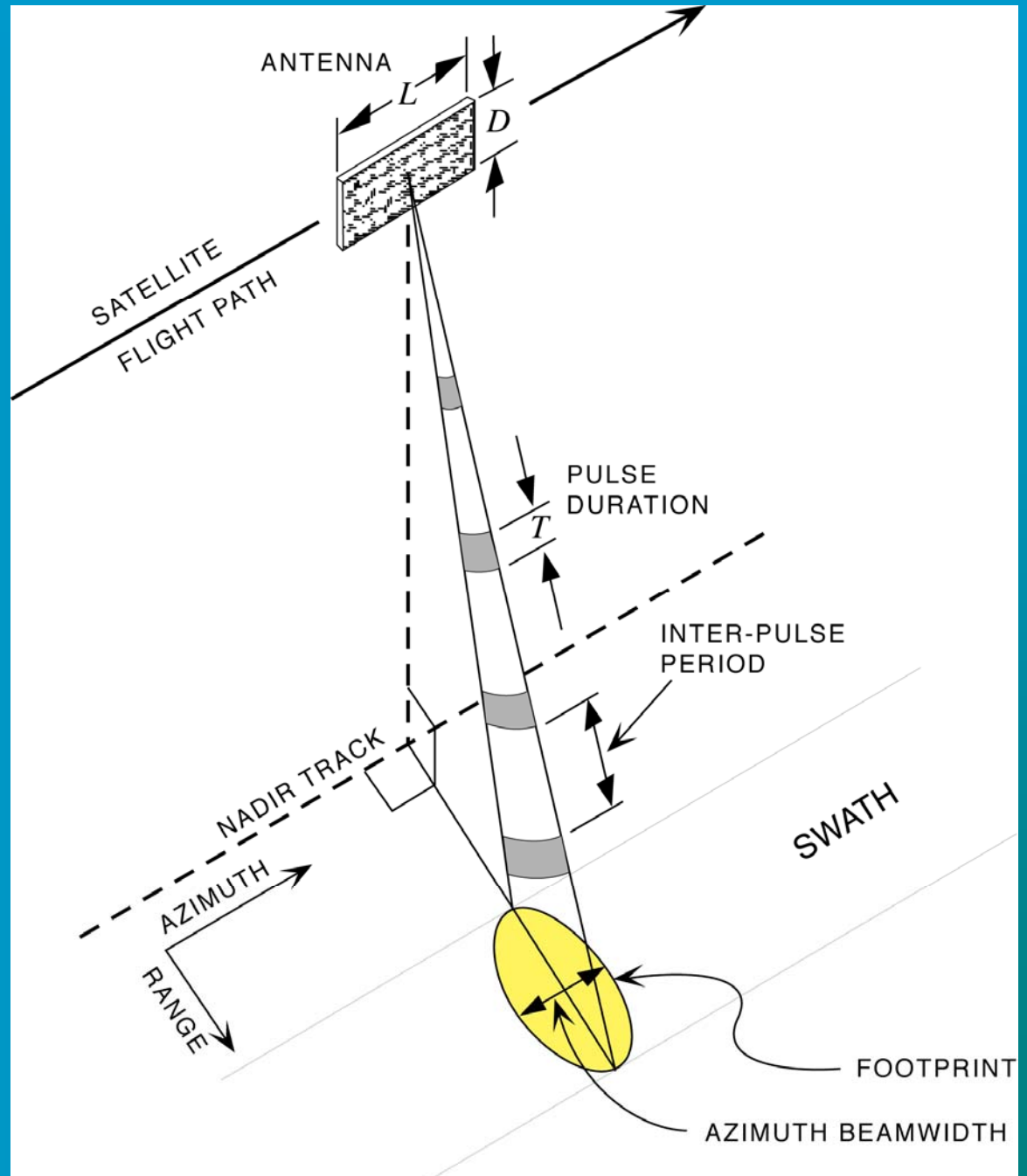
2004-07-23 to 2005-04-13



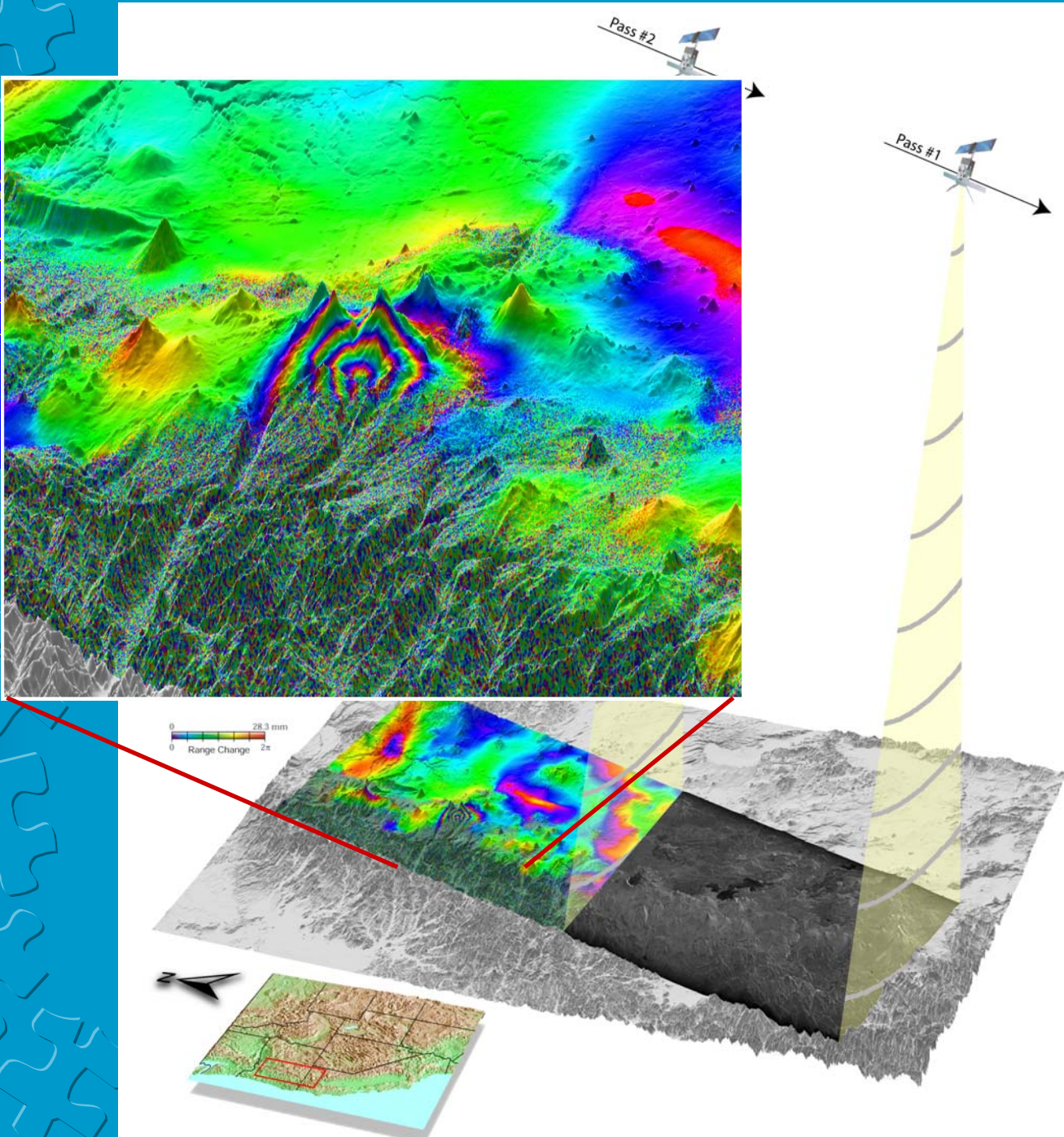
The azimuth resolution of a stationary antenna is: $R\lambda/L$

In limit, the azimuth resolution of a SAR system is: $L/2$

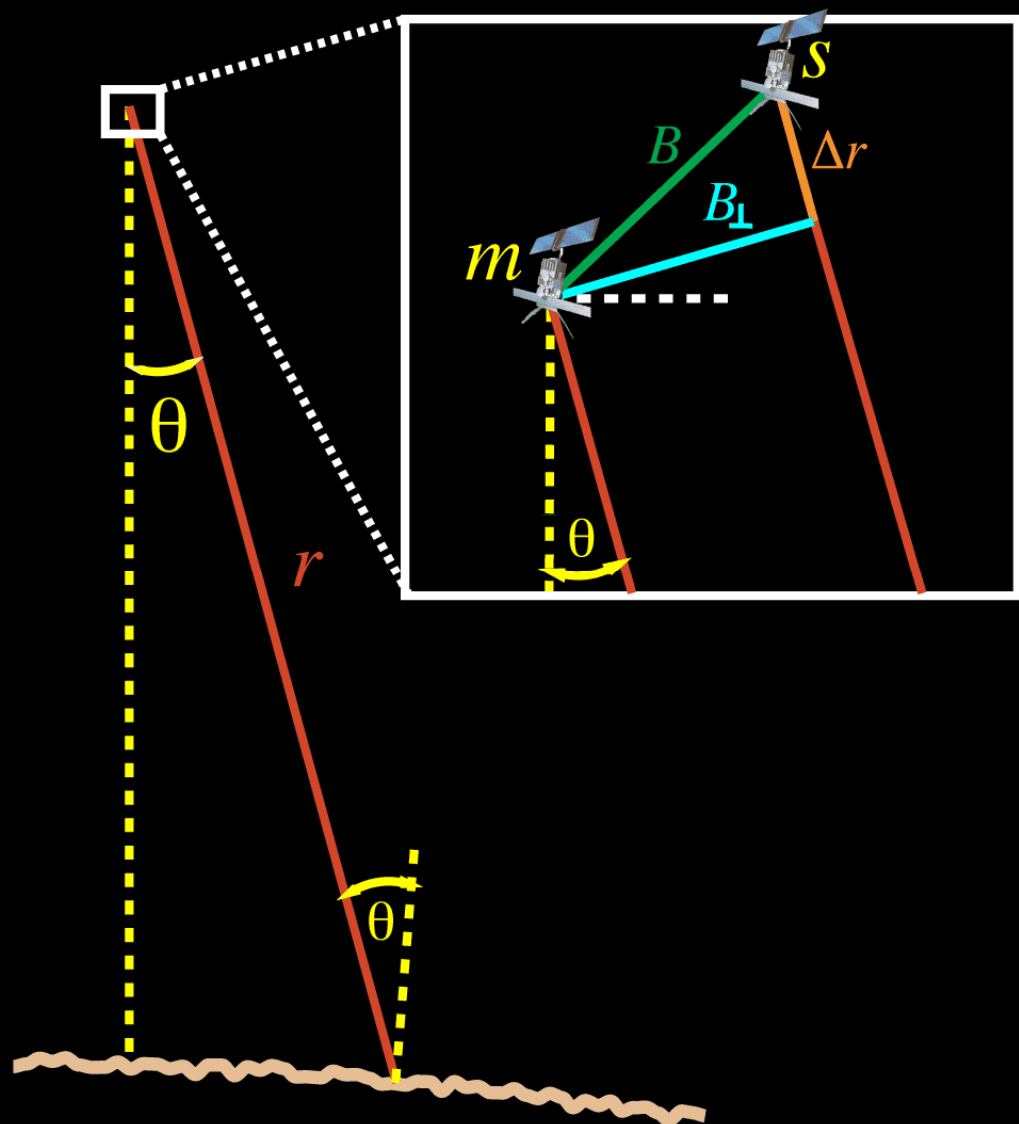
For an ERS antenna, resolution goes from ~4.5 km to ~5 m using the doppler effect from the moving satellite.



We use
method
exam
1996
2000.

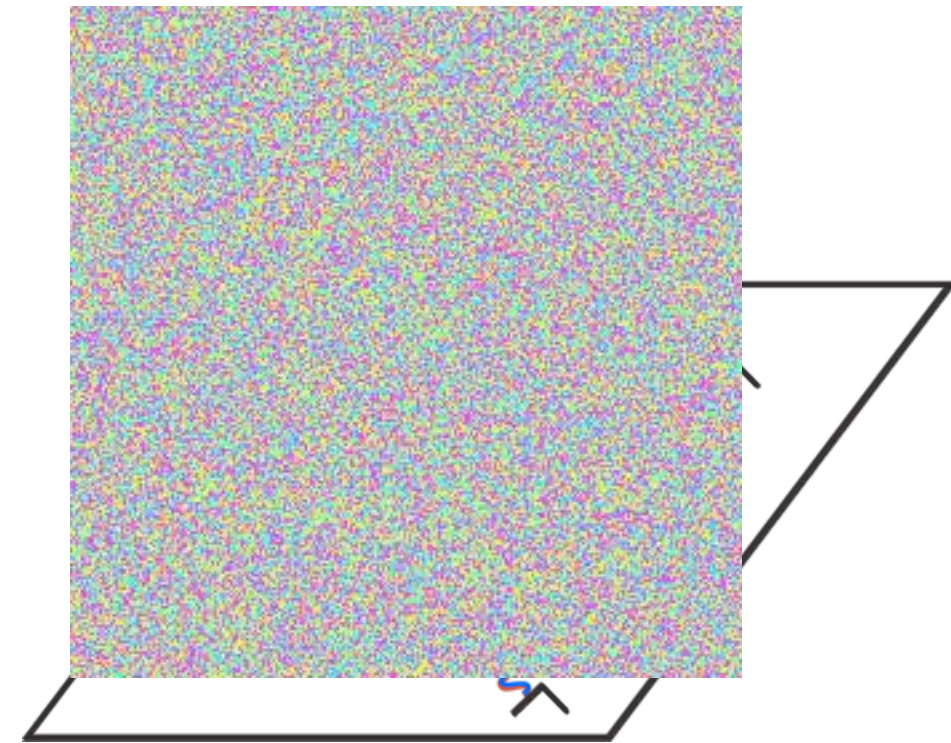


The perpendicular component of the baseline is important for estimating chances of an interferable pair of SAR images



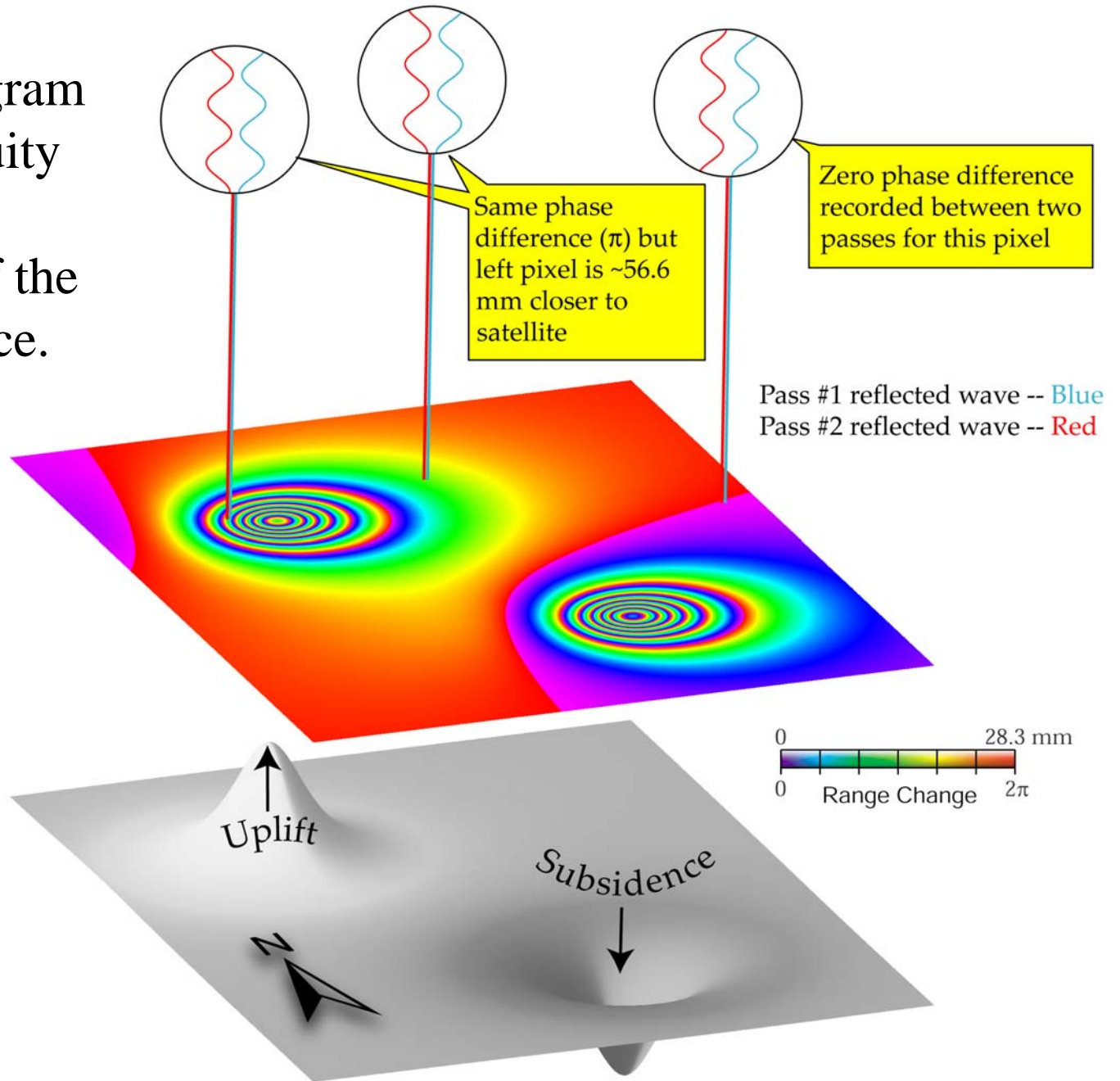


The phase of the signal (the perpendicular baseline) between the surface is a acquisition of the phase of the scatterers) that the interferometric phase will be incoherent



Scatterers in one pixel

The interferogram has an ambiguity related to the wavelength of the RADAR source.

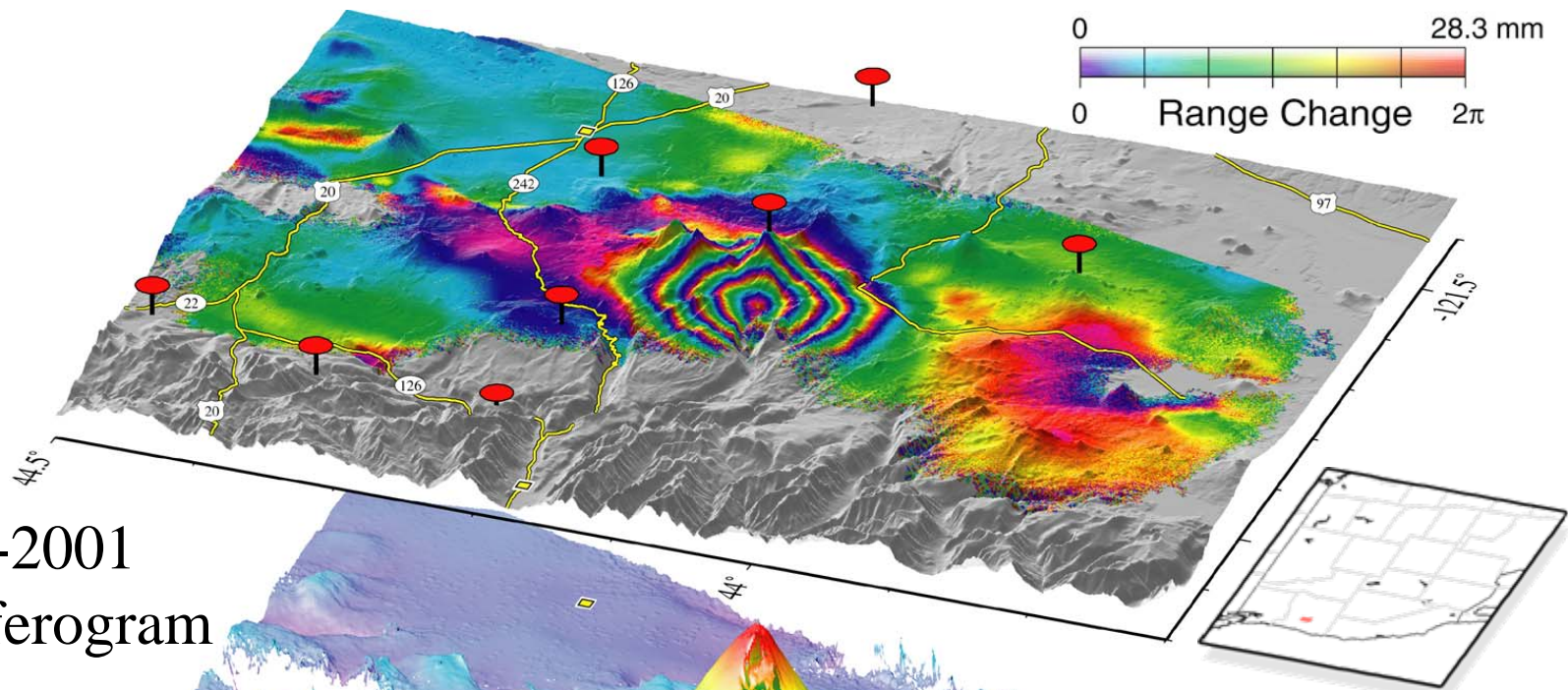




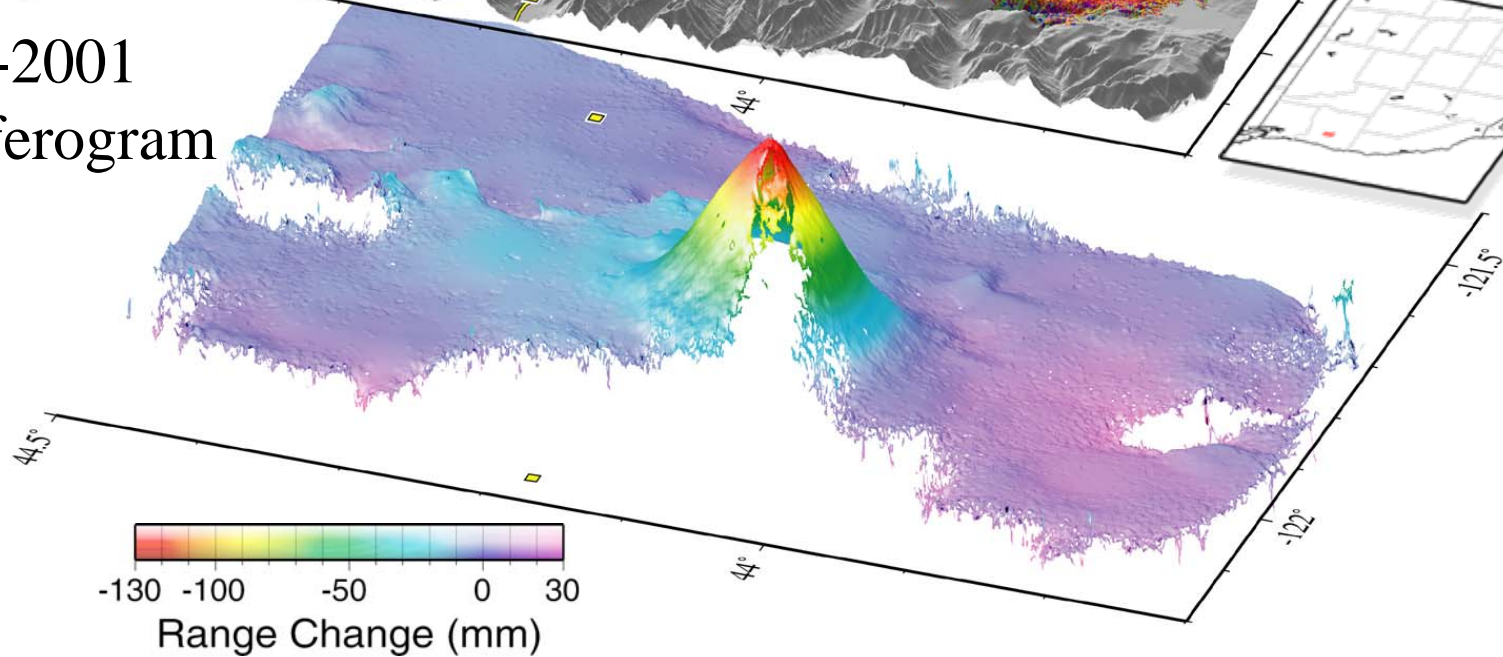
THREE
SISTERS ↗

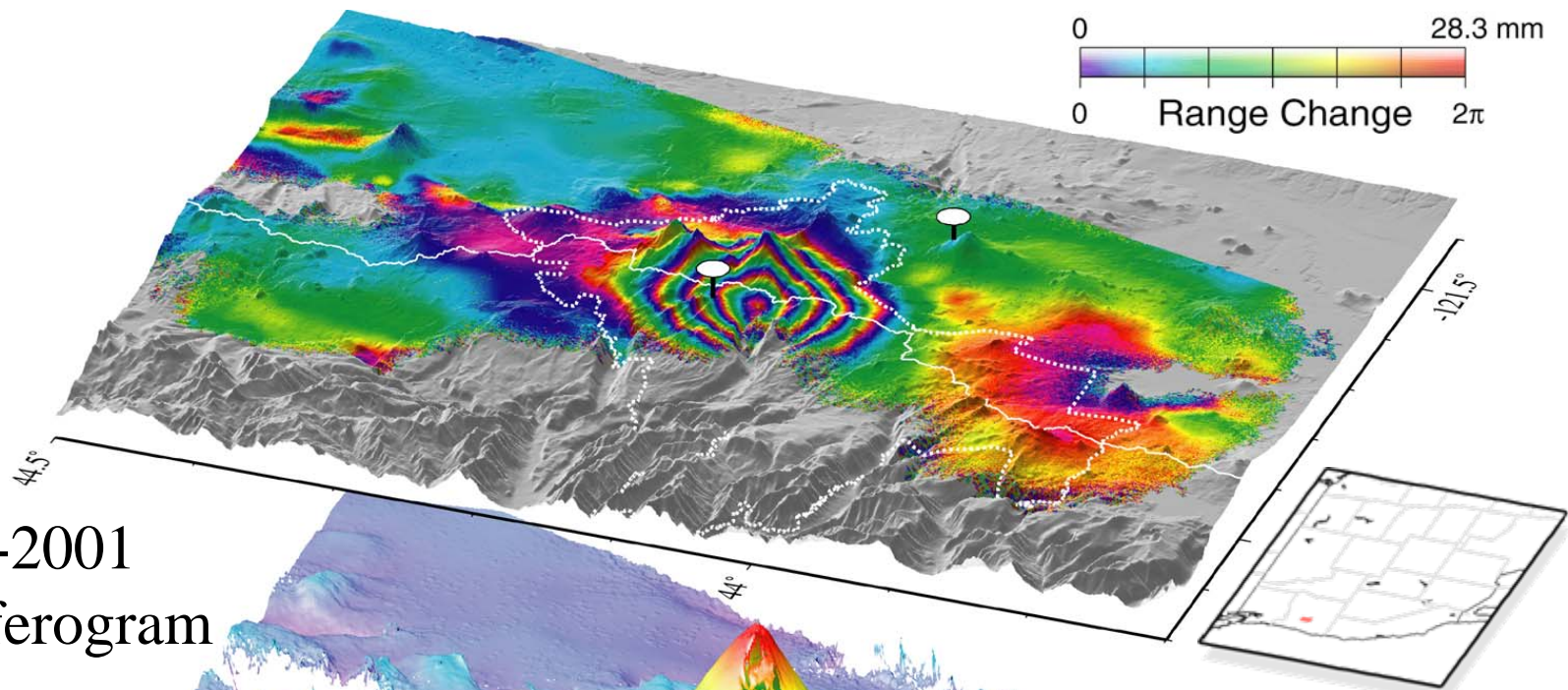


2002. 10. 30

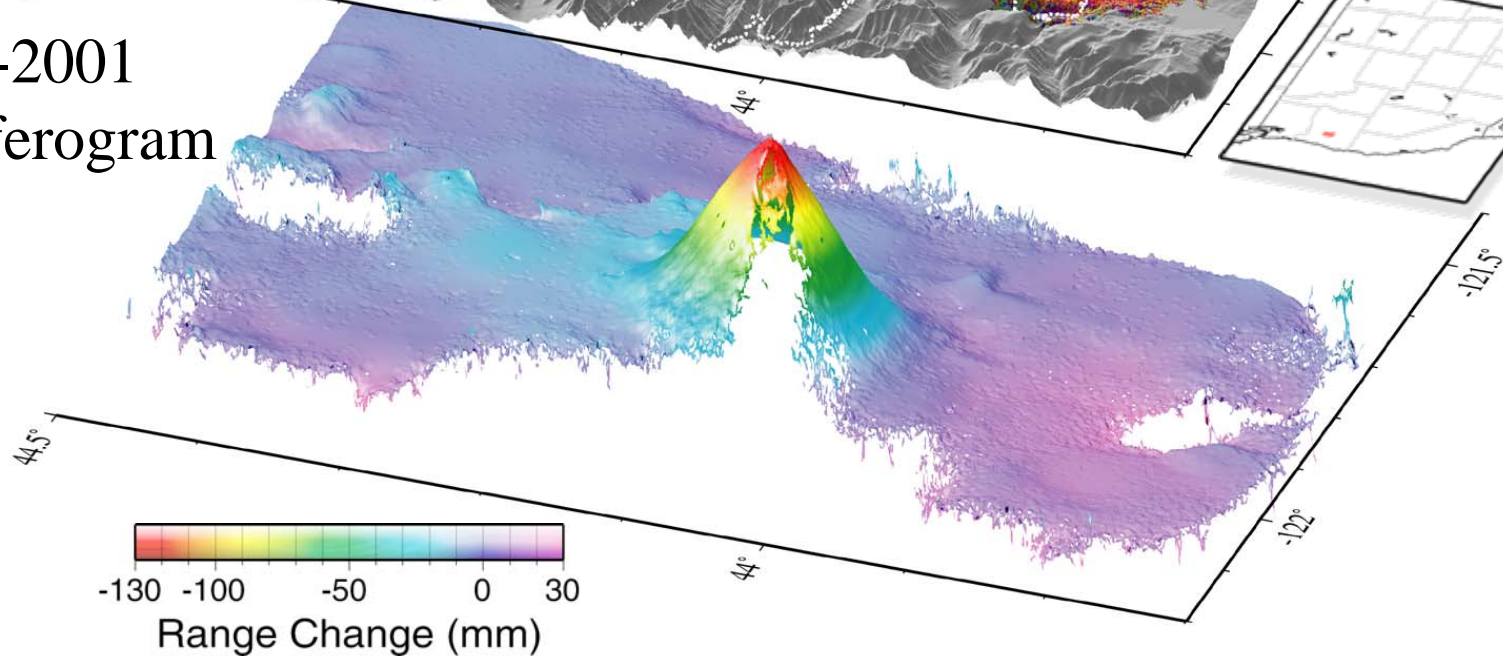


1995-2001
Interferogram



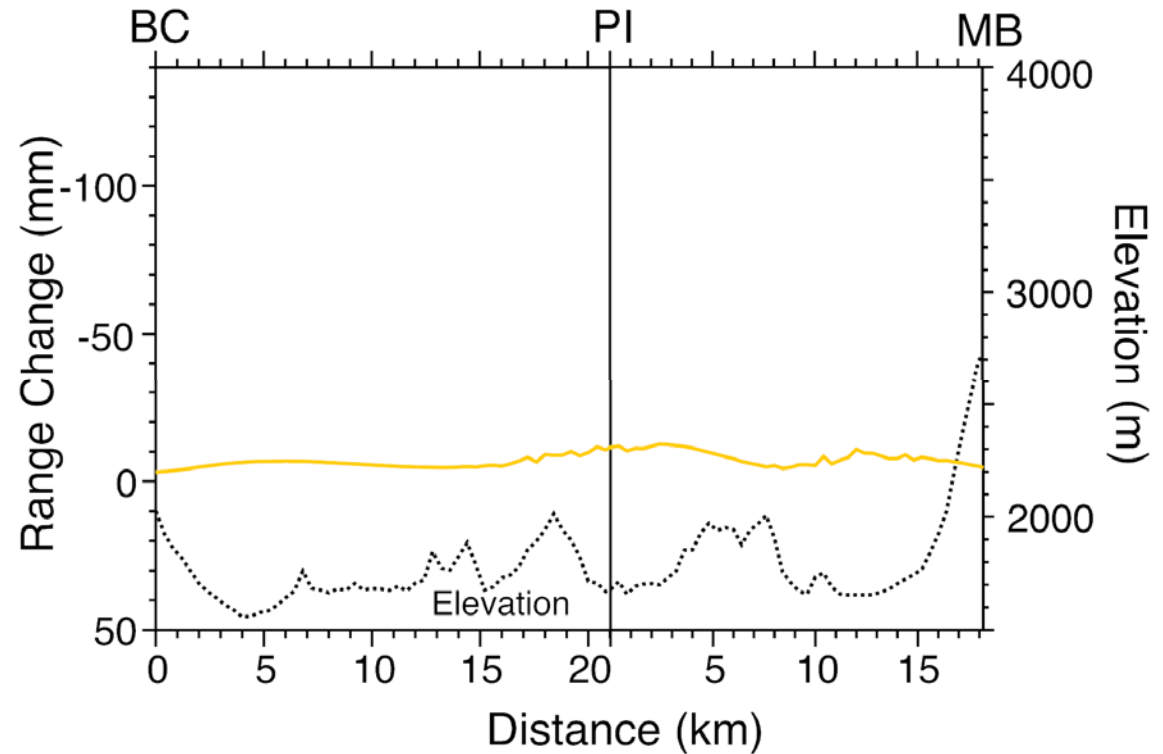
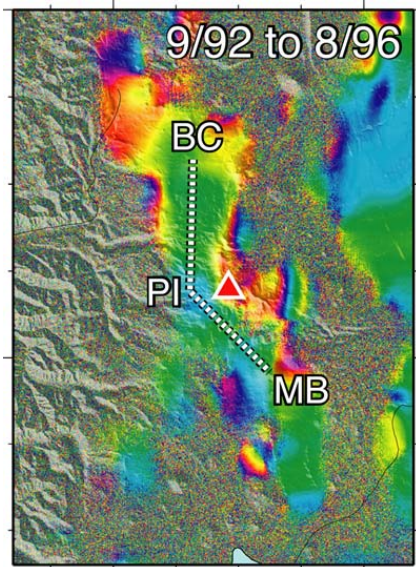


1995-2001
Interferogram

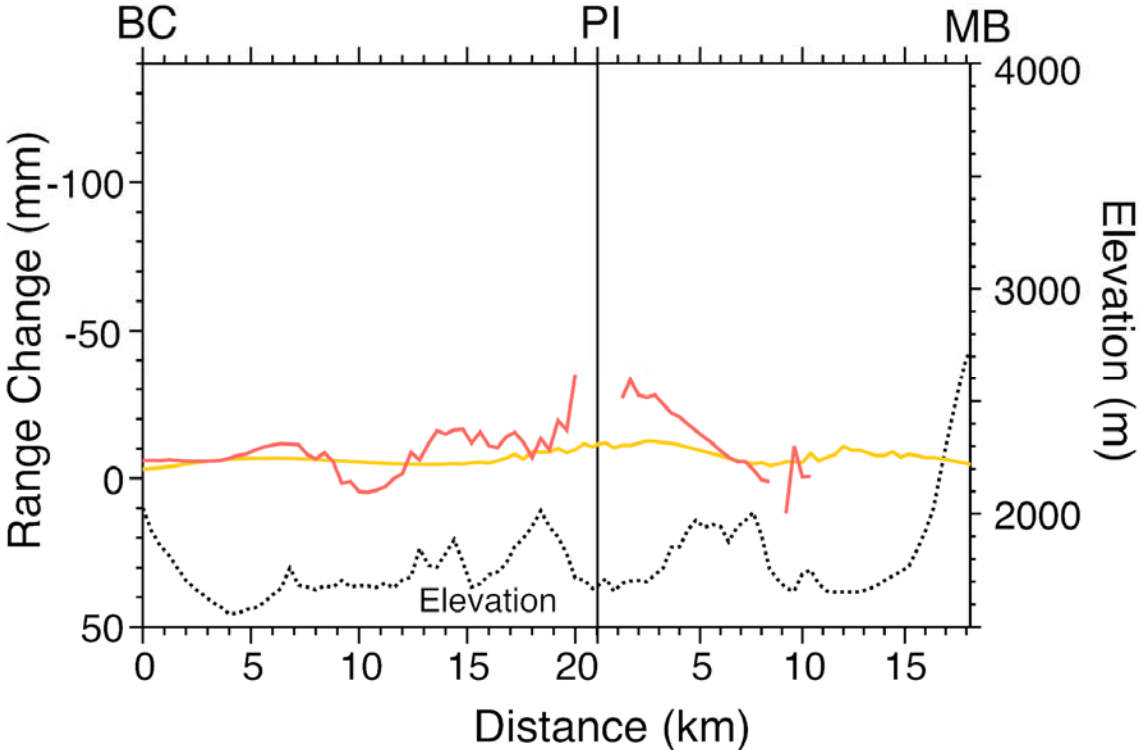
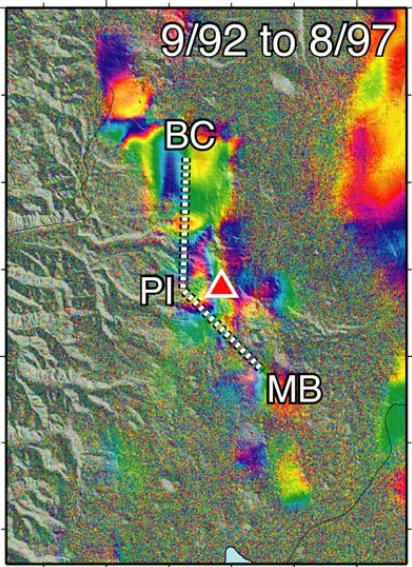




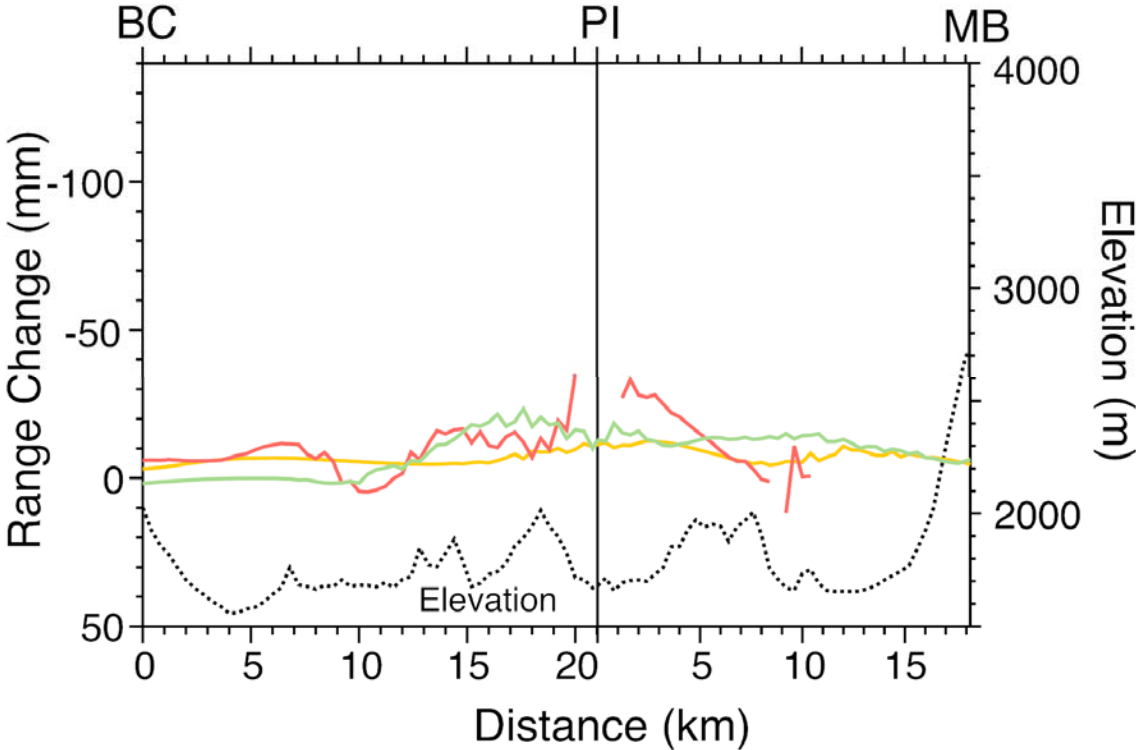
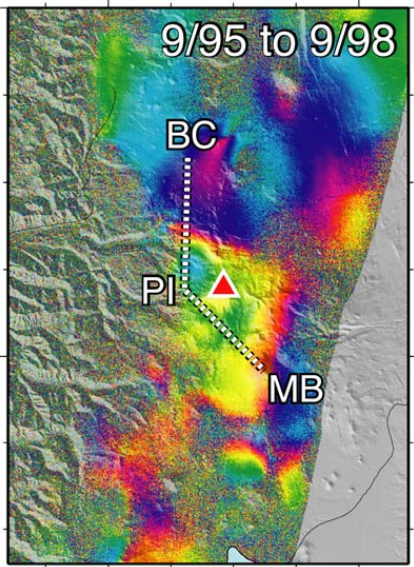
Profile of Uplift 1992-1996



Profile of Uplift 1992-1997

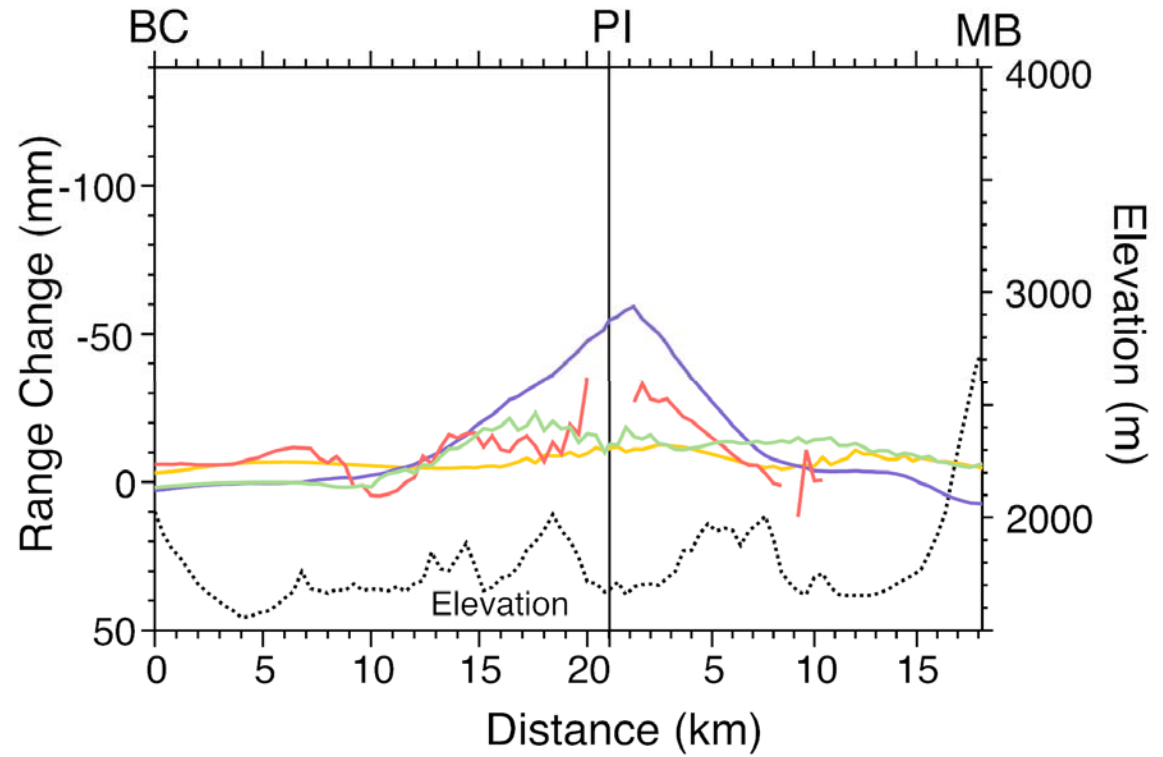
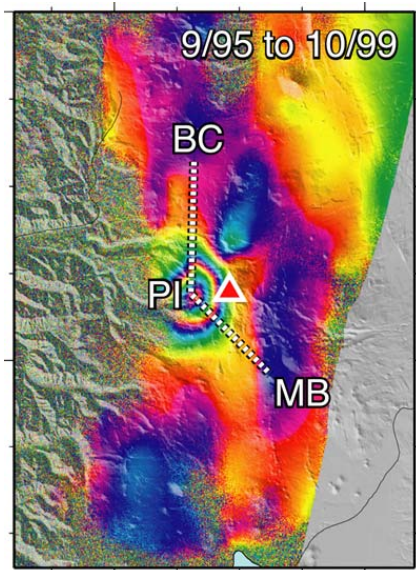


Profile of Uplift 1995-1998



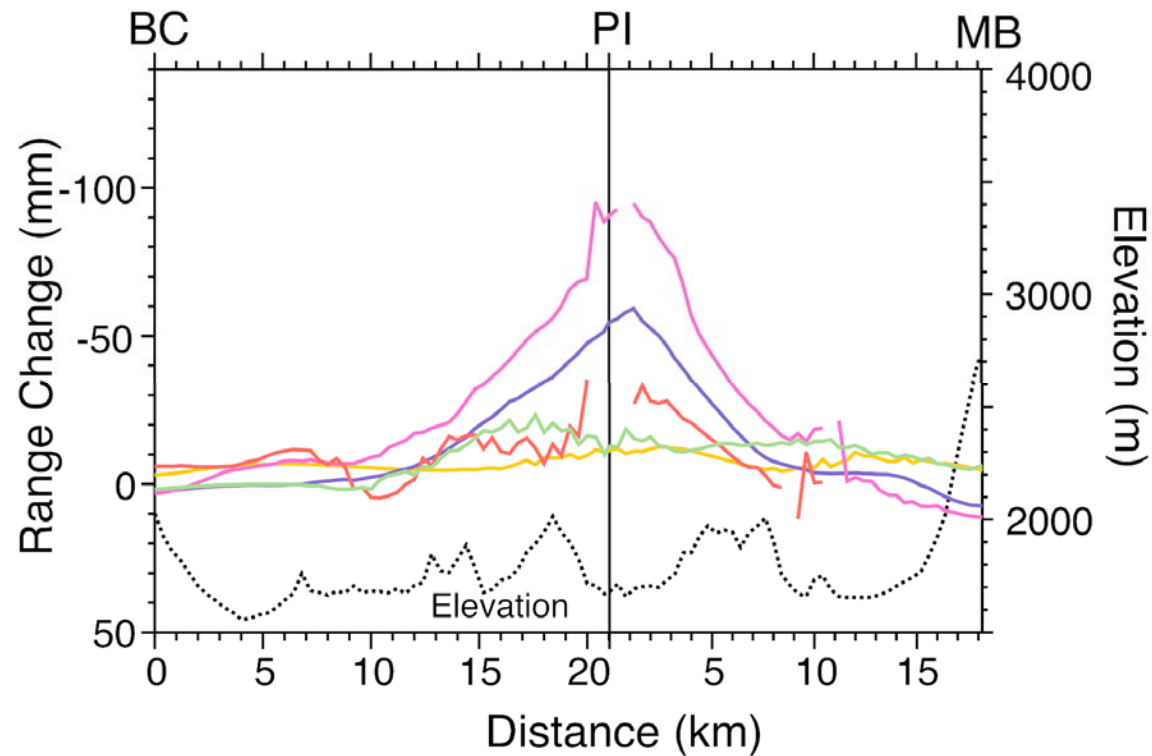
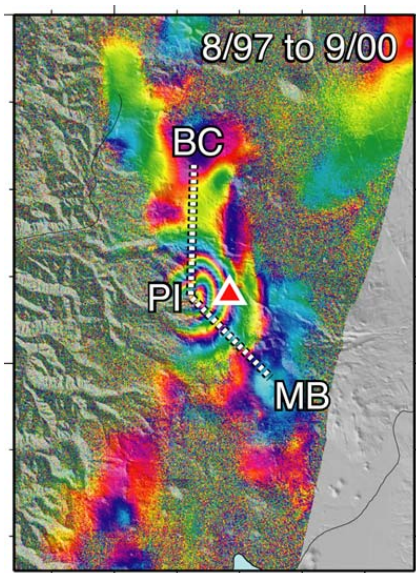


Profile of Uplift 1995-1999

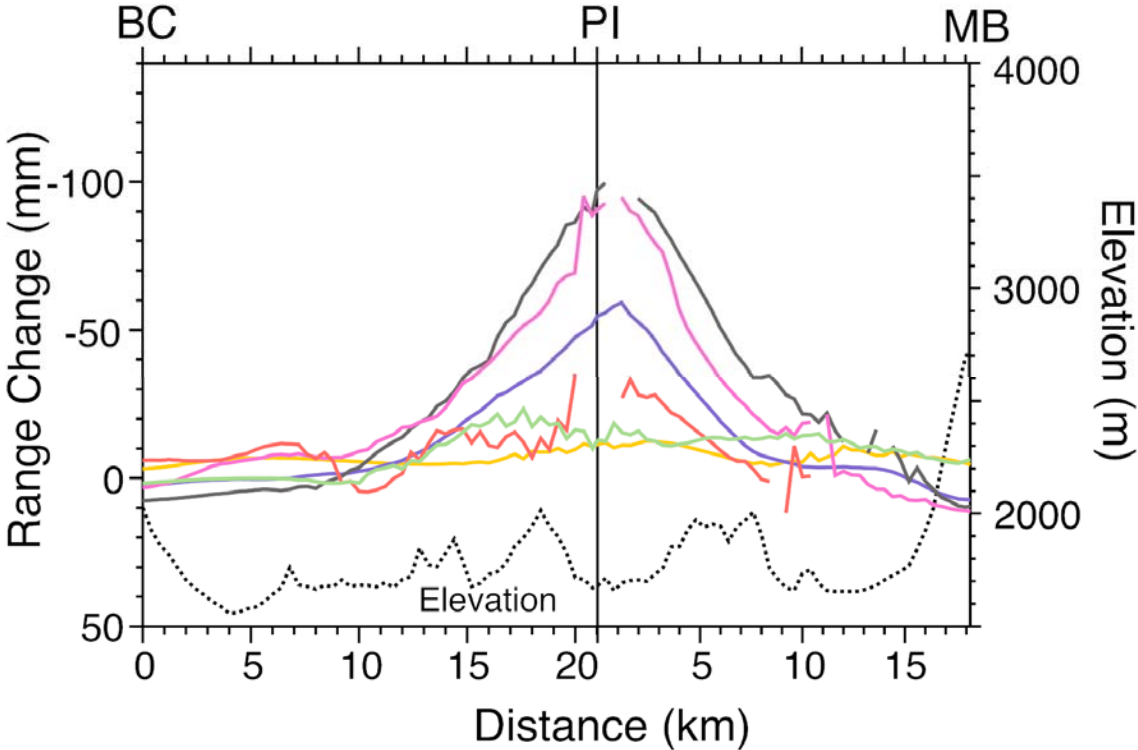
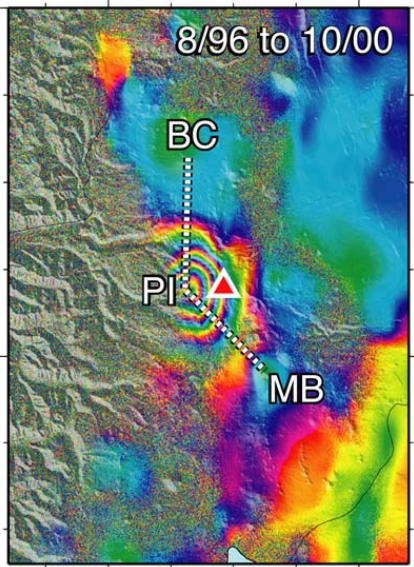




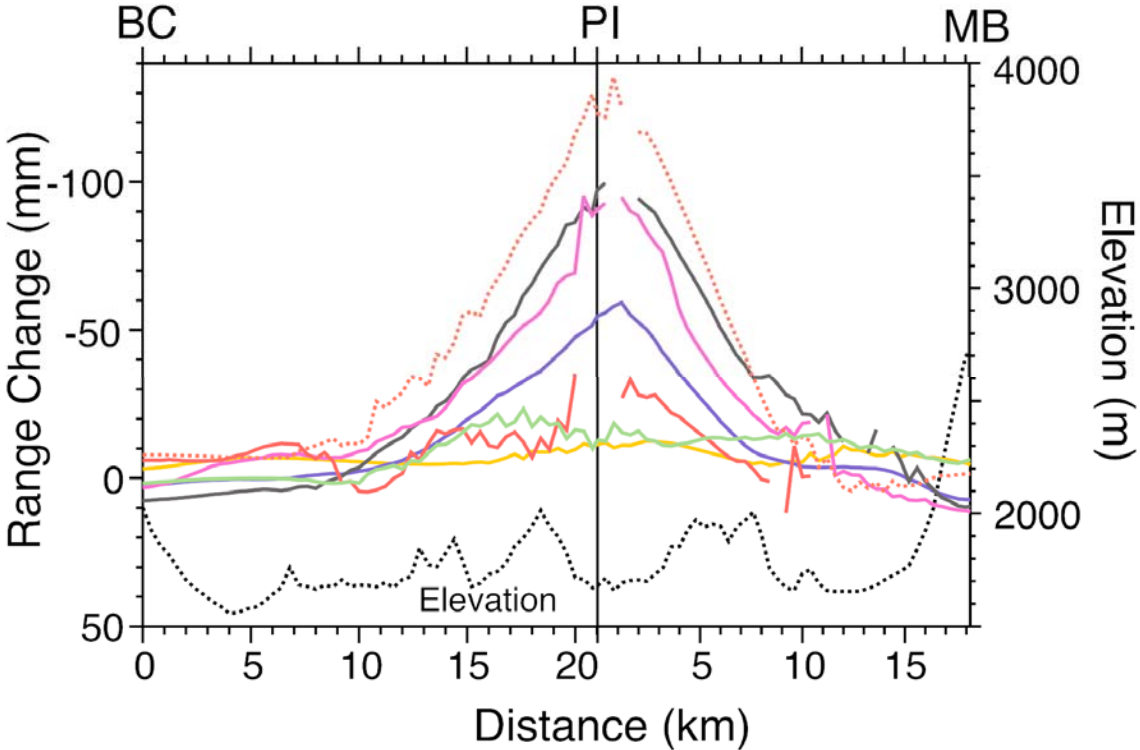
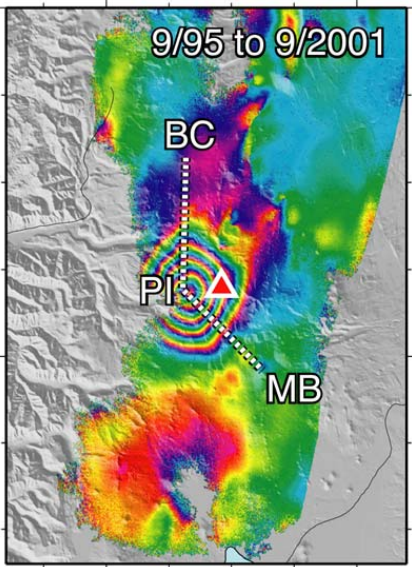
Profile of Uplift 1997-2000



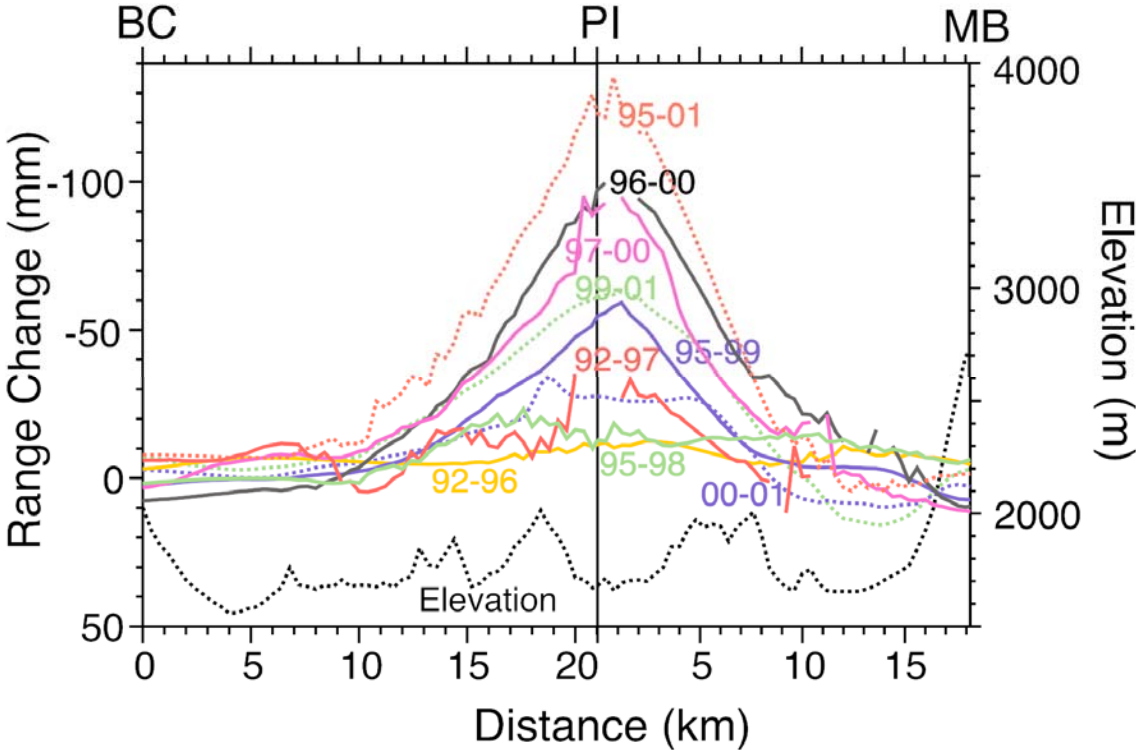
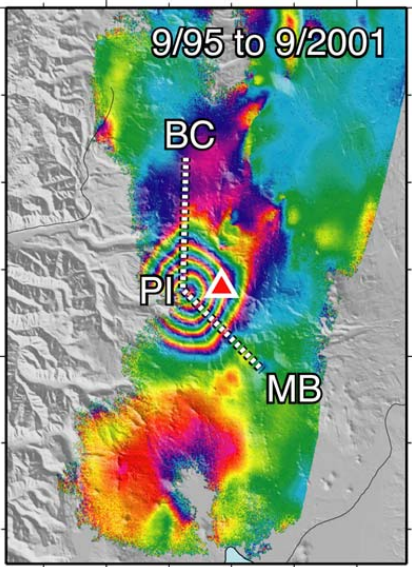
Profile of Uplift 1996-2000



Profile of Uplift 1995-2001



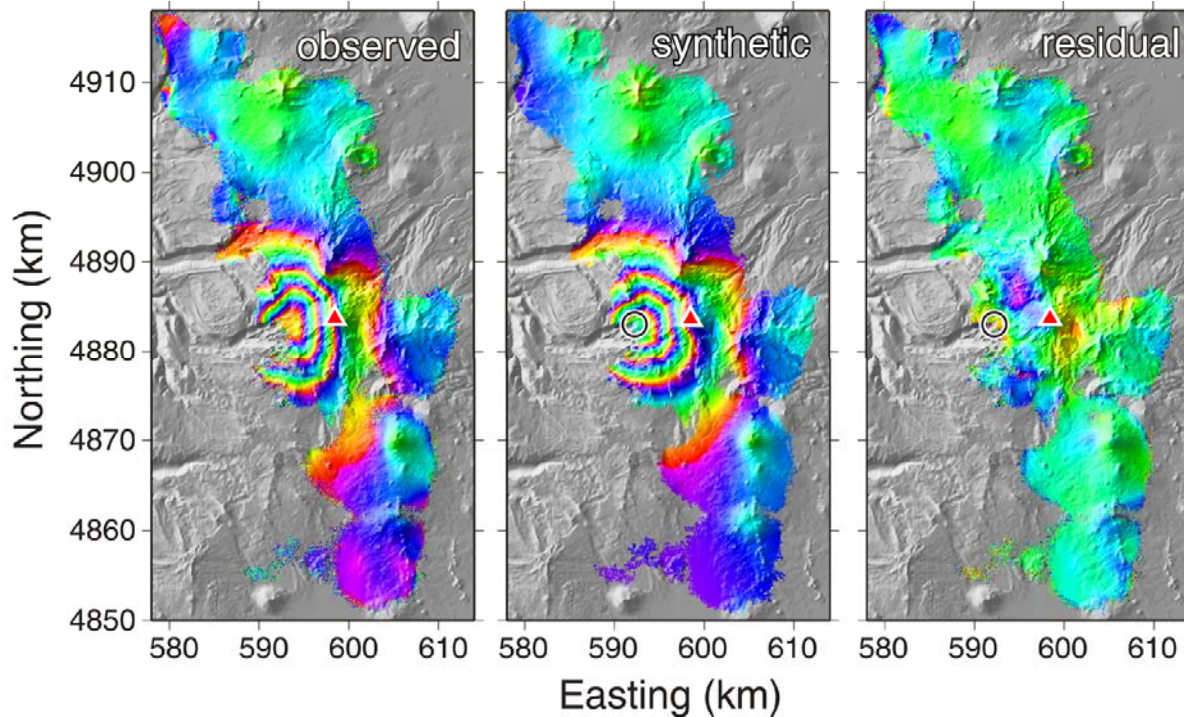
Profile of Uplift 1995-2001





Modeling the Uplift

(or forming an idea what it means)



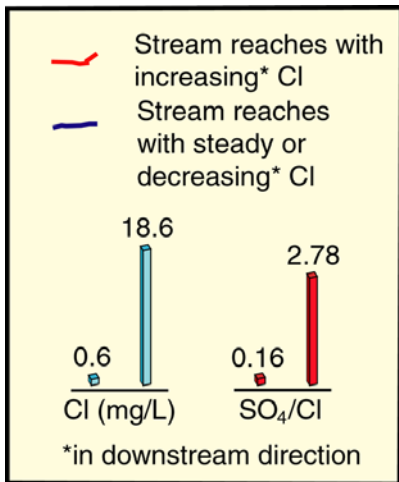
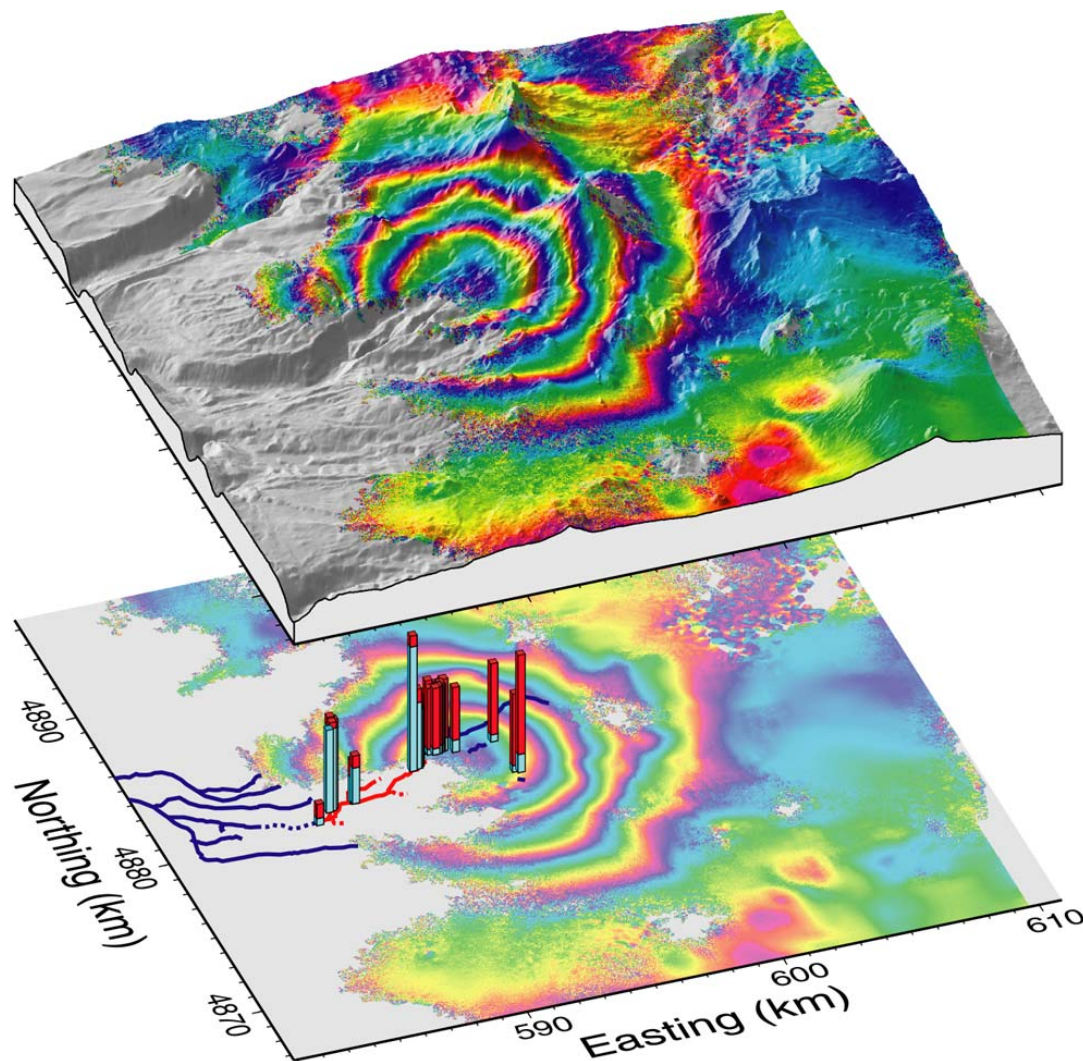
Assumptions

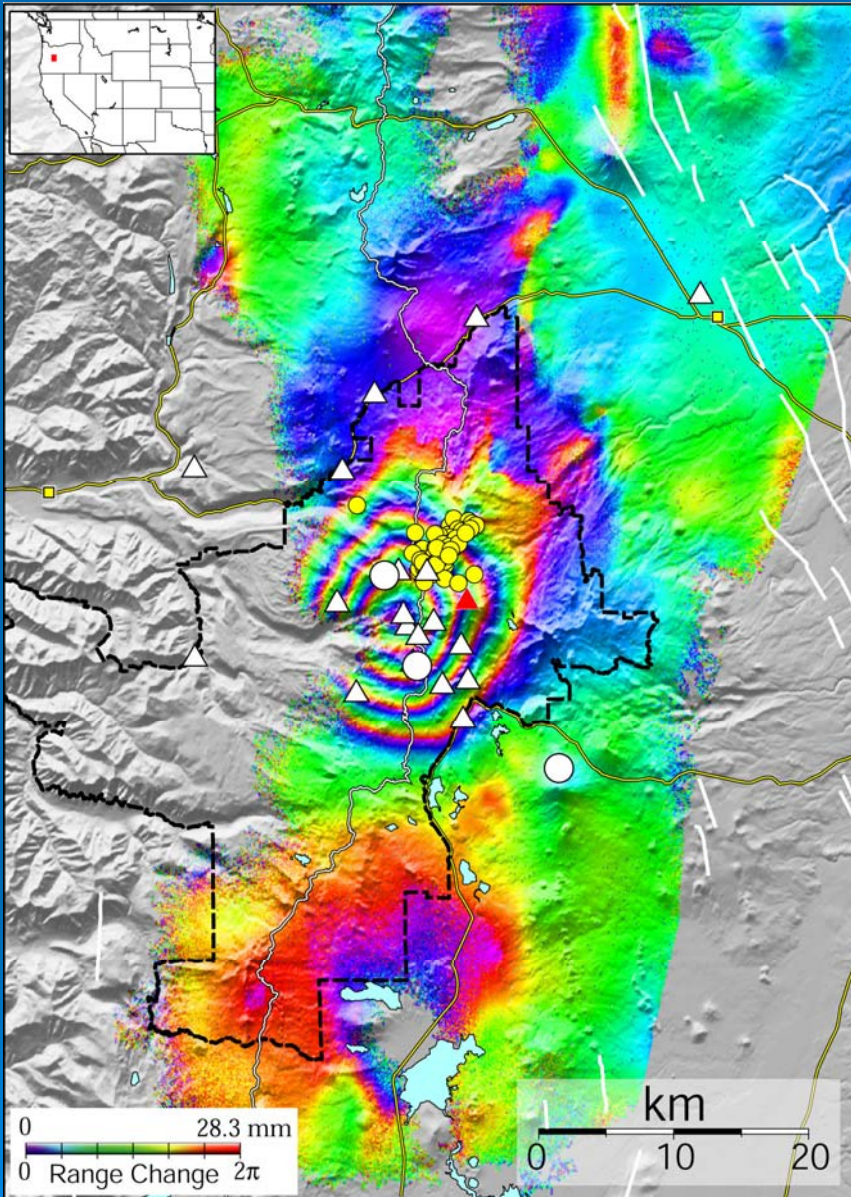
- ↪ Point Source of Inflation
- ↪ Elastic Half-space
- ↪ Simple correction for topography

Results

- ↪ Source Depth is 5-7 km
- ↪ Total volume of material injected is 0.02 - 0.03 km³

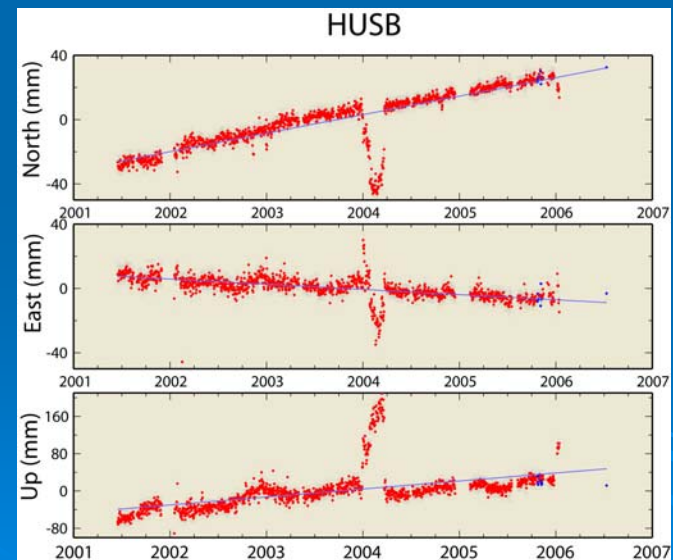
Geochemical Anomaly is Coincident with area of Uplift





Continuous GPS station HUSB shows steady northward movement from May 2001 until the present (~ 14 mm/year).

In the Three Sisters volcanic center heavy vegetation limits coherence to the west, and snow limits coherence through the winter and spring.





Snow Near South Sister on June 30, 2006



Peulik volcano, Alaska

1996-1997 Interferogram

Lu, et al., JGR 2002

