

SOUTH COAST AIR QUALITY MANAGEMENT DISTRICT

Annual Report on AB 2588 Air Toxics “Hot Spots” Program

June 2009

Deputy Executive Officer
Planning, Rule Development and Area Sources
Elaine Chang, Dr.PH

Assistant Deputy Executive Officer
Planning, Rule Development and Area Sources
Laki Tisopulos, Ph.D., P.E.

Planning and Rules Manager
Naveen Berry

Author: Victoria Moaveni, Sr. AQ Engineer

Technical assistance: Yi-Chia H. Chao, Sr. AQ Engineer
Pierre Sycip, AQ Specialist
Cheryl Marshal, Program Supervisor

Reviewed by: Thomas Chico, Program Supervisor
Barbara Baird, District Counsel

INTRODUCTION

This report satisfies Section 44363 of the California Health and Safety Code which requires the South Coast Air Quality Management District (AQMD) to annually prepare and publish a status and forecast report of the Air Toxics “Hot Spots” Information and Assessment Act (or AB 2588) activities. The main body of the report presents AB 2588 activities that occurred in calendar year 2008 and describes plans for future activities [Section 44363(a)(1)]. Appendix A lists facilities which have prepared health risk assessments for the AB 2588 program and their corresponding risks [Section 44363(a) (2) and (3)]. Appendix B describes the status of control measures and rules to reduce emissions of toxic air contaminants [Section 44363(a)(4)].

Background

In 1987, the California legislature adopted the Air Toxics “Hot Spots” Information and Assessment Act (or AB 2588). AB 2588 requires facilities to submit an air toxics inventory report (ATIR). A facility’s priority score is calculated from information in the ATIR.

AQMD staff follows the procedures in Health and Safety Code Section 44360 for prioritization and categorization of facilities. The potency, toxicity and amount of toxics released into the air, as well as the distance to workers, residents and sensitive receptors (such as hospitals, schools, and day care centers) are considered for prioritization and categorization. Facilities are assigned to high, medium, and low priority categories.

A facility with a priority score greater than ten (10) must provide a health risk assessment (HRA), following guidelines established by the State of California Office of Environmental Health Hazard Assessment (OEHHA),^[1] and supplemented by AQMD guidelines.^[2] If the risk reported in the HRA exceeds specific thresholds, then the facility is required to provide public notice to the affected community. The program is illustrated in Figure 1.

In 1992, the California legislature added a risk reduction component, the Facility Air Toxic Contaminant Risk Audit and Reduction Plan (or SB 1731), which required the District to specify a significant risk level, above which risk reduction would be required. In Rule 1402, the Governing Board set the significant risk level at a cancer risk of 100 in a million, and a total chronic or acute hazard index of 5.0. The Board also established action risk levels at a cancer burden of 0.5, a cancer risk of 25 in a million, and a hazard index of 3.0. Public notification and a public meeting are required for facilities with cancer risks greater than or equal to ten in a million or non-cancer acute or chronic hazard index greater than one. Rule 1402 requires annual public notice until the facility gets below the action risk levels.

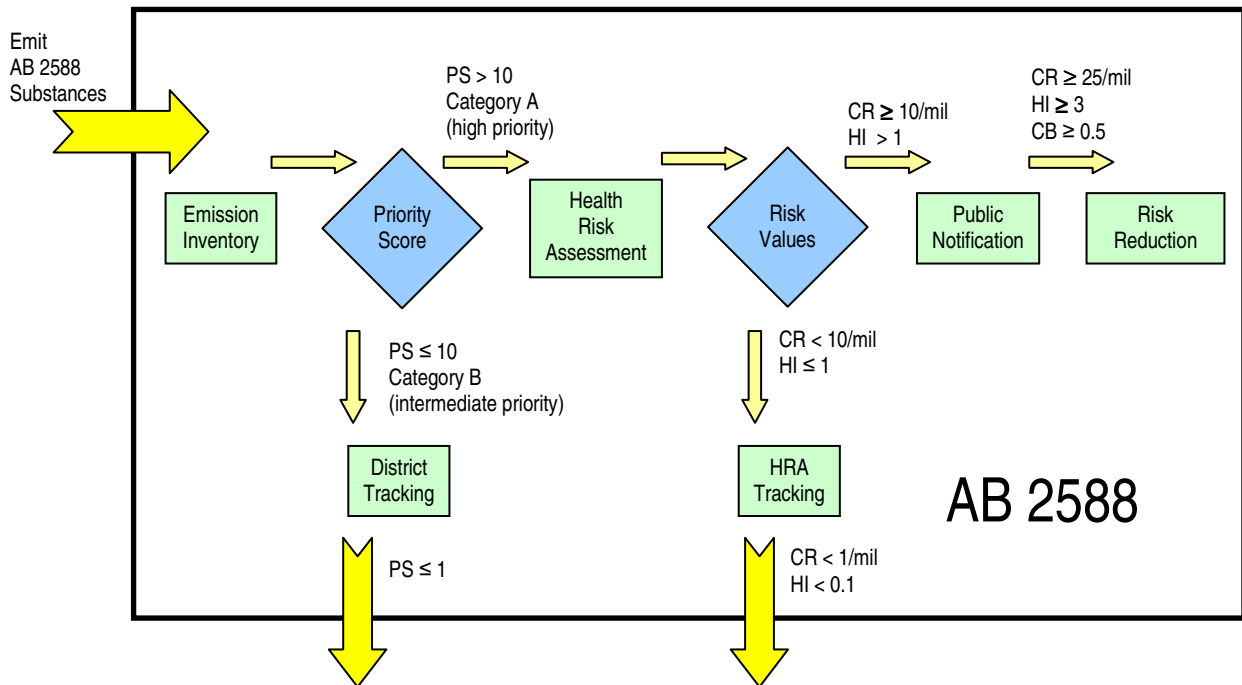


Figure 1 - Schematic of the Hot Spots Program
 (CR = cancer risk; PS = priority score; HI = hazard index; CB = cancer burden)

Currently, AQMD staff uses the web-based Annual Emissions Reporting (AER) Program to obtain a preliminary toxic inventory used for facility prioritization. Facilities with priority scores greater than ten are then asked to submit a detailed ATIR and perform an HRA using ARB’s Hotspots Analysis and Reporting Program (HARP).^[3]

Universe

AQMD has nearly 600 facilities active in the program, more than any other air district in the state. A facility is considered active in the AB 2588 program if it is subject to Hot Spots fees and is required to update its toxic inventory once every four years. This includes facilities that have:

- cancer risks greater than or equal to one in a million; or
- non-cancer hazard index greater than or equal to 0.1; or
- priority score greater than 1.

Air districts were also permitted to identify Industry-wide categories. The facilities that qualify for these categories share the same Standard Industrial Classification (SIC) code, by majority are small businesses, would suffer severe economic hardships by individual compliance, and can be easily and generically characterized. To date, the AQMD has identified seven Industry-wide categories:

- Retail Gasoline Dispensing;
- Perchloroethylene Dry Cleaning;
- Auto Body Shops;
- Fiberglass Molding;
- Printing;
- Metal Plating; and
- Wood Stripping / Refinishing.

The advantage to an Industry-wide category is that compliance may be handled collectively. The California Air Pollution Control Officers Association's (CAPCOA) Toxics Committee has been tasked with developing statewide emission inventory and risk assessment guidelines for several of these Industry-wide categories. Specifically, such guidelines have been completed for auto body shops^[4] and gasoline service stations.^[5] The guidelines for perchloroethylene dry cleaners^[6] are being finalized. The guidelines provide a cost-effective and uniform method for calculating facility emissions and estimating toxic risks for the approximately 1,600 auto body shops, 3,200 gasoline service stations, and 1,000 perchloroethylene dry cleaners under the AQMD's jurisdiction. In this manner, the AQMD may prepare Industry-wide inventories, risk assessments, and public notices and risk reduction plans if necessary. Facilities with emergency diesel internal combustion engines (DICEs) only are treated similarly to an Industry-wide category, as described later in this report. SCAQMD staff has developed public notification procedures for emergency DICE, as well as the Industry-wide categories of retail gasoline stations and perchloroethylene dry cleaners which were adopted by the Board on January 5, 2007^[7].

ACTIVITIES AND ACCOMPLISHMENTS

In calendar year 2008, the AB 2588 program staff accomplished the following:

- Approved four (4) facility HRAs and four (4) updated facility HRAs;
- Conducted one (1) public notice meeting;
- Prioritized two hundred eight (208) AB2588 facilities for FY2006-07, requested and evaluated seven (7) detailed Air Toxics Inventory Reports (ATIRs);
- Notified seven (7) facilities to prepare HRAs;
- In the early part of 2007, staff prepared and distributed Rule 1421 compliance letters to all active dry cleaners with permits for perchloroethylene dry cleaning equipment (approximately 1,400 facilities). The letters reminded facilities of the requirements in Rule 1421 that integrated primary and secondary control equipment must be in place on all perchloroethylene dry cleaning equipment by November 1, 2007. Secondly, the letter provided perchloroethylene usage limit for each facility and required the submittal of a Risk Reduction Plan that outlined

the facility's acceptance of the usage limit or replacement with non-perchloroethylene equipment within three years. In 2008, staff received and processed about 1,000 perchloroethylene dry cleaners Risk Reduction Plans to ensure compliance with Rule 1421 requirements;

- Added criteria and toxic emissions for fiscal year 2006-2007 to the AB2588 website and made it available to the public;
- Provided a list of **all facilities** subject to AB2588 and their HRA and prioritization scores to California Air Resources Board (CARB) to be posted on CEIDARS including low risk and exempt facilities. Traditionally, AQMD only provided information on facilities that are subject to State fees;
- Prepared procedures for assigning risk values to emergency standby diesel internal combustion engines (DICEs); and
- Provided technical assistance for development of Rule 1472 – Requirements for Facilities With Multiple Stationary Emergency Standby Diesel-fueled Internal Combustion Engines.

Each of these efforts is further explained below.

ATIRs, HRAs, and Risk Reduction

To date, staff has reviewed and approved over 300 facility HRAs. 42 facilities were required to perform a public notice and 21 facilities were subject to risk reduction. These 21 facilities are shown in Table 1, page 7. The results of the approved facility HRAs are summarized in Figures 2 and 3. For some of the facilities, the values indicate the risks after the implementation of risk reduction plans. Appendix A summarizes the cancer and non-cancer risk levels for each of the facilities that prepared an HRA. Over 96 percent of the facilities now have cancer risks below ten in a million and over 98 percent of the facilities have acute and chronic non-cancer hazard indices less than 1.

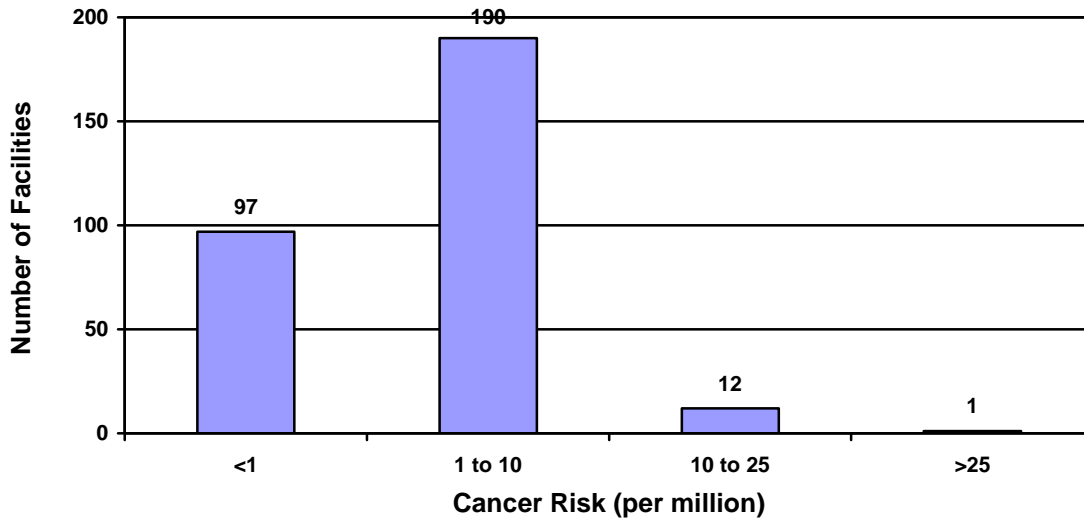


Figure 2 - Summary of Facility Cancer Risks

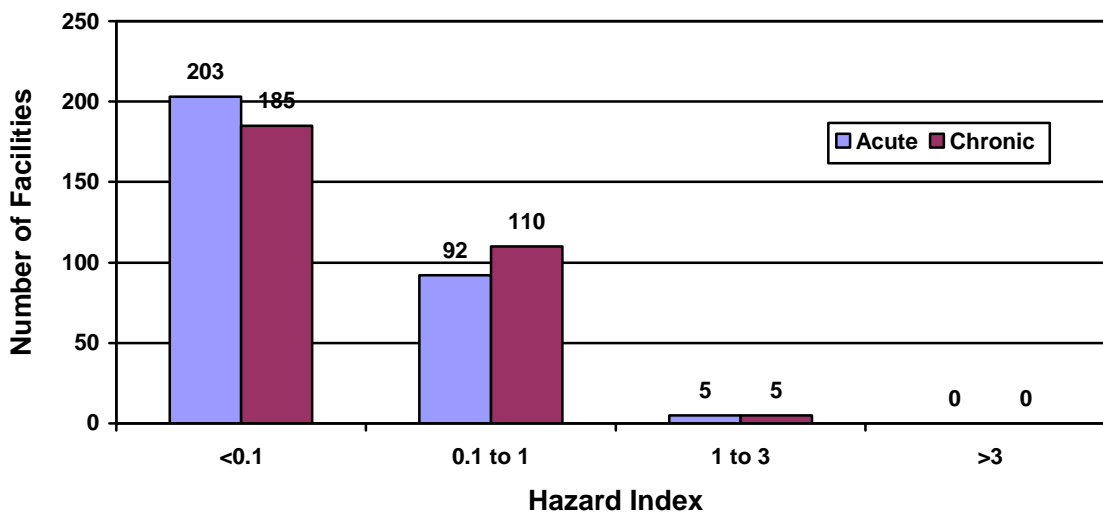


Figure 3 - Summary of Facility Non-Cancer Risks

In 2008, 11 HRAs were reviewed. Among these HRAs, 8 were approved, 2 were sent to Office of Environmental Health Hazard Assessment (OEHHA), and 1 was rejected based on comments from AQMD and OEHHA staff. The rejected HRA is being modified to address comments from both AQMD and OEHHA staff. In 2008, 6 facility HRAs were submitted.

Since the amendment of Rule 1402 on March 17, 2000, which lowered the action risk levels, the AB 2588 staff identified 21 facilities that were required to reduce risks (see Table 1).

Table 1 - Status of Risk Reduction Plans

Fac. ID	Facility Name	Submitted?	Approved?	Implemented?	Residual Risk
7427	Owens-Brockway Glass	Yes	Yes	Yes	Acute HI: 0.01
7730	E.R. Carpenter	Yes	Yes	Yes	Chronic HI: 1.34
8015	Anadite Inc.	Yes	Yes	Yes	Cancer: 3.5
8547	Quemetco	Yes	Yes	Yes	Cancer: 3.4 Acute HI: 0.053 Chronic HI: 0.287 Can. Burden 0.034(a)
8570	Embee Inc.	Yes	Yes	Yes	Cancer: 6.6
14191	Nicklor Chemical Co.	Yes	Yes	Yes	Non-cancer HIs: 0 (b)
15504	Schlusser Forge Co.	Yes	Yes	Yes	Cancer : 9.5 Chronic HI: 1.11
18294	Northrop-Grumman	Yes	Yes	Yes	Cancer: 7.6
22410	Palace Plating	Yes	Yes	Yes	Cancer: 5.6 Acute HI: 0.73 Chronic HI: 0.38
25012	Amada Manufacturing America, Inc.	Yes	Yes	Yes	Cancer: <0.1
41229	Lubeco, Inc.	Yes	Yes	Yes	Cancer: 14.0
45938	E.M.E. Inc.	Yes	Yes	Yes	Cancer: <0.1
48323	Sigma Plating Co.	Yes	Yes	Yes	Cancer: 13.8
61160	GE Engine Services	Yes	Yes	Yes	Acute HI: 0.7
116459	GE Engine Services	Yes	Yes	Yes	Cancer: 9.3
119127	PRC DeSoto International	Yes	Yes	Yes	Cancer: <0.1
126501	Vought Aircraft Industries, Inc.	Yes	Yes	Yes	Cancer: 19.7
134931	Alcoa Global Fasteners, Inc.	Yes	Yes	Yes	Cancer: 0.6
800037	DeMenno/Kerdoon	Yes	No	No	(c)
800063	Grover Products Co.	Yes	Yes	Yes	Cancer: 3.3
800196	American Airlines, Inc.	Yes	Yes	Yes	Cancer: 5.4 Acute HI: 0.86

(a) These HRA results are currently under staff review.

(b) Facility left the South Coast Air Basin as a result of a consent decree with the City of Carson. Thus, risks are zero.

(c) The Risk Reduction Plan (RRP) submitted by the facility requires revision and re-submittal. The RRP is due by May 2009.

A public notification meeting for DeMenno/Kerdoon was held on November 12, 2008 because the facility's cancer risks were over 10 in a million. DeMenno/Kerdoon is a hazardous waste treatment, recycling and storage facility located in Compton. They receive a variety of petroleum and glycol wastes, and produce refined products including marine diesel oil, asphalt high flash flux and antifreeze. About 25 households or

businesses were notified and 5 members of the public and a newspaper reporter for the Compton Bulletin attended the meeting. The presentation at the public meeting also included the results of the Risk Reduction Plan (RRP) that was submitted to the AQMD prior to the meeting since the maximum individual cancer risks were above 25 in a million. However, AQMD did not affirm DeMenno/Kerdoon's conclusions since the staff had not completed their review of the emission and risk reduction associated with the RRP. The RRP has to be implemented no later than October 2010.

Quemetco is a secondary smelter located in the City of Industry. Their main activity is to recover lead from spent automobile batteries. The facility submitted an initial HRA in December 2000. Due to several public meetings and various comments, the AQMD modified their HRA and approved the modified HRA on December 16, 2005. The risk values contained in the approved Quemetco HRA triggered risk reduction. The risk reduction plan includes a wet electrostatic precipitator (WESP) and regenerative thermal oxidizer (RTO). (A WESP reduces toxic particulate emissions while an RTO reduces toxic organic emissions.) Construction of the control equipment began in October 2007. Startup procedures on the WESP began in June 2008, but a fire on July 3, 2008 destroyed two sections (out of five) of the WESP. The facility ceased operations after the fire. Reconstruction of the WESP was completed and the facility returned to operations in October 2008. Pursuant to Rule 1402, Quemetco provided Public Notice regarding risk reduction status and activities on December 12, 2008. A source test measuring toxic emissions was completed in January 2009. The HRA, received April 8, 2009, to demonstrate compliance with Rule 1402 is currently under staff review.

Public Outreach and Response to Community Concerns

AB 2588 staff has been extensively involved in the investigation of community concerns regarding TXI Riverside Cement Company.

TXI Riverside Cement Co. manufactures various types of gray cement, including Type II Portland, Block, and Plastic Cement, in addition to importing cement clinker produced at the TXI Oro Grande cement plant in Oro Grande, California. The facility is located at 1500 Rubidoux Boulevard, Riverside, California. Late in 2007, The AQMD completed data analysis for the MATES-III study, a regional evaluation of air toxics pollution in Southern California, which indicated noticeable elevated hexavalent chromium concentrations in the ambient air and soil at the Western Riverside Air Monitoring Station relative to a previous air toxic study in 1998. This finding was contrary to anticipated levels, as several AQMD regulations should have resulted in a decrease of hexavalent chromium emissions. After several months of sampling and lab work, the AQMD staff concluded that the TXI Riverside Cement activities are the source of these elevated hexavalent chromium levels. As a result, AQMD staff required that TXI prepare an HRA in accordance with Rule 1402(d) to assess the health risks in the community around the facility, and if necessary, take appropriate actions to reduce the hexavalent chromium emissions. TXI submitted their HRA in September 2008. The HRA was

reviewed by AQMD staff and deemed not acceptable and requires revision and re-submittal. The revised HRA is due in the spring of 2009. Since mid-2008, several modifications have occurred at TXI, mainly due to a settlement agreement between AQMD and TXI, and as a result the risk at the facility has decreased.

Gregg Industries is a gray iron foundry located in El Monte. They produce iron castings for industrial, automotive, and trucking applications. The facility submitted an initial HRA on February 15, 2007. Based on various comments, the facility submitted a revised HRA on December 3, 2007. The AQMD modified the revised HRA and approved the modified HRA on April 2, 2008. The risk values contained in the approved Gregg HRA were below any regulatory thresholds. Gregg Industries has announced its closure by May 2009^[8].

Procedures for Assigning Risk Values to Emergency Standby Diesel Internal Combustion Engines (DICES)

On January 5, 2007 the AQMD Governing Board adopted public notification procedures for emergency DICES and Industry-wide categories of gas stations and perchloroethylene dry cleaners^[7]. These streamlined procedures differ from the previously established notification procedures for individual core facilities since some of these Industry-wide categories have thousands of facilities that may require public notice. Only facilities with cancer risks of 10 in a million or above, excluding risk attributable to the emergency DICE, are required to notify the affected community by direct mailing and hold a public meeting. In addition, a guidance document was developed and approved to outline procedures for inventory, risk assessment, and calculations pertaining to the Industry-wide categories, including emergency DICES.

To streamline the process and document assumptions and methods for the web notification, in August 2008, the AQMD staff developed procedures to estimate risk numbers for facilities with emergency DICES not on the AB2588 core facility list. Staff has developed a database of approximately 5,900 facilities in this category. Core facilities with prime engines will incorporate the regular program requirements for risk assessment and public notification. These procedures will enable AQMD to implement the “AB2588” requirements for emergency DICES as well as to post the status of current emergency DICES operating with valid permits after the implementation of Rule 1470.

Website Enhancements

As part of an earlier Environmental Justice initiative, a web-based tool was developed to display criteria and toxic emissions from facilities in the Annual Emissions Report (AER) and AB 2588 programs.^[9] A user can select by individual facility (using either facility name or ID), by street name, by city, or by zip code. This past year, the criteria and toxic emissions for FY 2006-07 were added to the database available to the public. This tool

has been regularly utilized by the public. During calendar year 2007, there were approximately 31,000 inquiries from the general public on this site.

Web Based Emission Reporting Program

In 2008, AQMD developed a new web-based emission reporting tool for facilities to use for preparing their AER and AB2588 Reports, allowing consolidation of criteria and toxic emissions. AB2588 facilities report their quadrennial toxics emissions inventory under the AER program. The program enhances the efficiency of the reporting process for AB2588 facilities, improves the quality of the data, provides a linkage between criteria and toxic pollutants, and enables the AQMD to identify facilities of concern. The tool also provides an option to calculate and report greenhouse gas (GHG) emissions to both AQMD and the CARB. Starting with 2008 AER, the web-based emission reporting tool can be accessed on-line which enables permitted facilities to enter operational data, automatically calculate emissions and fees, and to submit the emission data reports on-line. All emission and fee calculations and the transfer of data to summary forms are automatic. Once the report is submitted by the facility, the data are uploaded directly into AQMD's central database. After the first year, users can import the previous year data to start the emission reporting process. AB2588 facility must calculate and report toxic emissions for every source within the facility premises.

Miscellaneous Support Efforts

AB 2588 staff provided support to several other related toxic activities in 2008 as follows:

- Staff has developed the FY 2006-07 point source inventory of criteria pollutants and toxic air contaminants. It consists of about 2,500 facilities and provides emissions at the SIC and Source Category Code (SCC) level. The inventory was provided to CARB.
- Staff contributed to the development of the MATES III draft and final reports, responded to public comments, and made a presentation at the Technical Advisory Group Meeting in August 2008.
- Staff provided oversight and technical support for an outside contract to develop meteorological data for the U.S. Environmental Protection Agency guideline model called AERMOD. In the near future, this data will be available for use in health risk assessments.

FUTURE ACTIVITIES

In 2009, staff plans to perform the following tasks:

Implement Public Notification Procedures for Facilities with Emergency DICEs - Only and the Industry-wide Categories of Gasoline Stations and Perchloroethylene Dry Cleaners

As discussed earlier, on January 5, 2007, the AQMD Governing Board adopted the public notification procedures for emergency DICEs and Industry-wide categories of gasoline stations and perchloroethylene dry cleaners. An important task for 2009 is to complete implementation of the AB2588 requirements for these industries which entails the following:

- Estimating the emissions and cancer risks for approximately 1,000 perchloroethylene dry cleaners, 3,200 gasoline stations; and 1,100 facilities with multiple emergency DICEs only;
- Developing the AQMD website for these categories for notification purposes;
- Publishing the risks on the AQMD website;
- Distributing notices to school districts and local libraries; and
- Posting a notice on facility property.

Develop Work Plan for Addressing Emission Inventory, Risk Assessment, and Public Notification Procedures for the Remaining Industry-wide Categories

Staff will develop an internal work plan for addressing emission inventory, risk assessment, and public notification procedures for the remaining Industry-wide categories of auto body shops, fiberglass manufacturing, printing, metal plating, and wood stripping/finishing.

Continue to Notify Facilities with Prime DICEs

Staff will continue to identify facilities with prime DICEs, notify these facilities of the requirements to prepare and submit ATIR and HRA, followed by reviewing and approving these HRAs.

HRA Review and Approval

There are about 7 facility HRAs in addition to 2 detailed Air Toxics Inventory Reports (ATIRs) that are either under review or will be submitted in the first half of 2009. An important task for the coming year is to review and approve these HRAs. AB 2588 staff will continue to identify “high priority” facilities and notify these facilities to prepare detailed ATIR and facility HRA.

REFERENCES

- [1] OEHHA. 2003. The Air Toxics Hot Spots Program Guidance Manual for Preparation of Health Risk Assessments. The document is available at http://www.oehha.org/air/hot_spots/HRAguidefinal.html.
- [2] AQMD. 2005. Supplemental Guidelines for Preparing Risk Assessments to Comply with the Air Toxics ‘Hot Spots’ Information and Assessment Act. The document is available at http://www.aqmd.gov/prdas/AB2588/AB2588_B3.html under the bullet item labeled “AQMD risk assessment guidelines.”
- [3] ARB. 2005. Hotspots Analysis and Reporting Program (HARP). Link to HARP is <http://www.arb.ca.gov/toxics/harp/harp.htm>.
- [4] CAPCOA. 1996. Auto Bodyshop Industry-wide Risk Assessment Guidelines. Prepared by CAPCOA, September 1996. The document is located at the following link: <http://www.arb.ca.gov/ab2588/riskassess.htm>.
- [5] CAPCOA. 1997. Gasoline Service Station Industry-wide Risk Assessment Guidelines. Prepared by CAPCOA, December 1997. The document is located at the following link: <http://www.arb.ca.gov/ab2588/riskassess.htm>.
- [6] CAPCOA. 2003. Perchloroethylene Dry Cleaner Industry-wide Risk Assessment Guidelines. Prepared by CAPCOA, January 13, 2003 (Draft). The document is located at the following link: <http://www.arb.ca.gov/ab2588/riskassess.htm>.
- [7] AQMD. 2007. Emission Inventory and Risk Assessment Guidelines. The document is in the attached material for agenda item #28 of the January 5, 2007 AQMD Governing Board Meeting. See the following link to download the material: <http://www.aqmd.gov/hb/2007/January/0701ag.html>.
- [8] San Gabriel Valley Tribune. Gregg Industries to Close, 234 workers lose jobs. The article is available at the following link: http://www.sgvtribune.com/news/ci_11683646
- [9] The web-based tool is available at: <http://www.aqmd.gov/aer/DataInquiry.html>.

Appendix A

Health Risk from Facilities with an Approved Health Risk Assessment (HRA)

The table in Appendix A lists the facilities and the current risks as reviewed and approved by the AB2588 staff. In most instances, the listed risks are from an approved HRA. However, in some instances, the risks are those after the implementation of a risk reduction plan. See Table 1 included in the report for the status of the facility's risk reduction plan. Attention should also be given to the other footnotes in the table denoting facilities with updated HRAs pending approval and facilities with risk including emergency DICES. It also provides current status of each facility as follows:

- A – Active
- I – Inactive
- OB – Out of business

The table lists the facilities in the order of their cancer risk. The following risk levels are identified in AQMD Rule 1402 – Control of Toxic Air Contaminants from Existing Sources:

- **Action Risk Levels:** Cancer risk ≥ 25 in a million; Acute HI ≥ 3.0 ; Chronic HI ≥ 3.0 , Cancer Burden ≥ 0.5
- **Public Notification Levels:** Cancer risk ≥ 10 in a million; Acute HI > 1.0 ; Chronic HI > 1.0
- **Exemption Levels:** Cancer risk < 1 in a million; Acute HI < 0.1 ; Chronic HI < 0.1

Appendix A

Health Risks from Facilities with an Approved HRA

Facility ID	Facility Status	Facility Name	City	Cancer Risk in a million	Cancer Burden	Acute Hazard Index	Chronic Hazard Index	HRA Approved (year)
800037	A	DEMENNO/KERDOON	Compton	32.60	0.040	0.03	0.03	2008
8547	A	QUEMETCO INC. (a)	Industry	22.00	1.160	0.54	0.19	2005
122822	I	CONSOLIDATED FILM INDUSTRIES	Hollywood	21.00	n/a	0.11	0.40	2000
14495	A	VISTA METALS CORP.	Fontana	19.80	0.057	0.01	0.29	2008
126501	A	VOUGHT AIRCRAFT INDUSTRIES	Hawthorne	19.70	n/a	0.64	0.24	2001
114927	A	ANVIL CASES / A CALZONE COMPANY	Industry	19.00	n/a	0.13	0.08	2002
11142	OB	KEYSOR-CENTURY CORP	Saugus	17.00	n/a	0.54	0.06	2000
18989	A	BOWMAN PLATING CO. INC.	Compton	14.20	0.021	<0.01	<0.01	2007
41229	A	LUBECO, INC.	Long Beach	14.02	n/a	0.00	0.12	2003
35302	A	OWENS CORNING FIBERGLASS CORP. (b)	Compton	14.00	0.015	0.07	0.10	2000
48323	A	SIGMA PLATING COMPANY	La Puente	13.84	0.017	0.01	0.74	2004
18648	OB	CROWN CITY PLATING COMPANY	El Monte	11.99	0.130	0.39	0.13	2000
29110	A	OR. CO., SANITATION DIST	Huntington Beach	10.70 (c)	0.210	1.78	0.48	2007
106797	OB	SAINT-GOBAIN CONTAINERS LLC	Los Angeles	9.85	n/a	0.00	0.07	2000
101380	OB	GENERAL DYNAMICS OTS (DOWNEY) INC	Downey	9.80	n/a	0.01	0.05	2000
148925	A	CHERRY TEXTRON	Santa Ana	9.70	n/a	0.07	0.15	1999
800183	A	PARAMOUNT PETROLEUM CORPORATION	Paramount	9.61	n/a	0.02	0.01	2002
800318	A	GRISWOLD INDUSTRIES	Costa Mesa	9.51	0.009	0.10	0.01	2001
15504	A	SCHLOSSER FORGE CO.	Rancho Cucamonga	9.50	0.067	1.59	1.11	2003

Appendix A. Continued.

Facility ID	Facility Status	Facility Name	City	Cancer Risk in a million	Cancer Burden	Acute Hazard Index	Chronic Hazard Index	HRA Approved (year)
800149	A	US BORAX & CHEM CORP	Wilmington	9.46	n/a	0.00	0.03	2000
10510	A	GREGG INDUSTRIES INC.	El Monte	9.40	0.010	0.60	0.56	2008
155828	A	GARRETT AVIATION SERVICES INC.	Los Angeles	9.33	n/a	0.91	0.10	2005
42922	OB	CMC PRINTED BAG INC	Whittier	9.00	n/a	<0.01	<0.01	1995
800396	A	BP WEST COAST PRODUCTS, ARCO VINVALE	South Gate	9.00	0.023	<0.01	0.03	1994
3525	A	P.B. FASTENERS	Gardena	8.91	0.010	0.09	0.06	1999
800089	A	EXXON-MOBIL OIL CORPORATION	Torrance	8.90	0.380	0.06	0.05	2001
1744	A	KIRKHILL RUBBER CO	Brea	8.70	0.001	0.20	0.06	2007
800431	A	PRATT & WHITNEY ROCKETDYNE, INC.	Canoga Park	8.70	0.130	<0.01	<0.01	1995
44454	A	STRUCTURAL COMPOSITES INDUSTRIES, INC.	Pomona	8.60	0.001	0.01	0.23	2002
800363	A	CONOCO-PHILLIPS CO.	Wilmington	8.60	0.282	0.98	0.07	2001
2680	A	LA CO., SANITATION DISTRICT	Whittier	8.57	n/a	0.00	0.03	1999
15736	A	HENRY CO	Hunt. Park	8.50	0.026	0.00	0.00	2000
800057	A	GATX TANK STORAGE TERMINAL CORP	Carson	8.50	n/a	0.01	0.06	1999
800079	A	PETRO DIAMOND TERMINAL CO	Long Beach	8.30	n/a	0.00	0.16	1998
125281	OB	MODERN PLATING ALCO CAD-NICKEL PLATING	Los Angeles	8.20	n/a	0.10	0.01	1997
21615	OB	OPTICAL RADIATION CORP	Azusa	8.08	n/a	0.17	0.10	1998
110924	A	WESTWAY TERMINAL COMPANY	San Pedro	8.00	0.370	0.33	0.51	1997
3609	A	AL'S PLATING CO INC	Los Angeles	7.81	n/a	0.26	0.17	1999
37603	A	POLYCARBON INC	Valencia	7.80	0.012	0.01	0.36	1998
800182	A	RIVERSIDE CEMENT CO. (b)	Riverside	7.80	n/a	0.05	0.13	2001
800436	A	TESORO REFINING AND MARKETING CO	Wilmington	7.80	n/a	0.33	0.45	2000

Appendix A. Continued.

Facility ID	Facility Status	Facility Name	City	Cancer Risk in a million	Cancer Burden	Acute Hazard Index	Chronic Hazard Index	HRA Approved (year)
13920	A	ST. JOSEPH HOSPITAL	Orange	7.73	0.014	0.79	0.26	2008
18294	A	NORTHROP CORP., AIRCRAFT DIV. - WEST	El Segundo	7.60	n/a	0.13	0.05	2000
113170	A	SANTA MONICA HOSPITAL MEDICAL CTR UNIT 2	Santa Monica	7.60	0.000	0.17	0.01	1997
800214	A	LA CITY, HYPERION TREATMENT PLANT (b)	Playa del Rey	7.59	0.027	0.06	0.01	1999
20197	A	LAC/USC MEDICAL CENTER	Los Angeles	7.50	0.031	0.70	0.38	2007
800032	A	CHEVRON U.S.A. INC	Montebello	7.46	0.143	0.01	0.18	1999
800150	A	US GOVT., AF DEPT, MARCH AFB	Riverside	7.35	0.020	0.31	0.01	2008
108701	A	BALL FOSTER GLASS CONTAINER CO.	El Monte	7.30	0.056	0.09	0.07	2000
117560	A	EQUILON ENTER, LLC-SHELL OIL PROD. US	Wilmington	7.30	n/a	0.03	0.07	1998
131003	A	BP WEST COAST PRODUCTS LLC	Carson	7.28	n/a	0.30	0.08	2000
800113	A	ROHR IND INC	Riverside	7.20	0.011	0.86	0.02	2007
800236	A	LA CO., SANITATION DIST UNIT NO.01	Carson	7.20	0.058	0.17	0.12	2007
49387	A	UNIV CAL RIVERSIDE	Riverside	7.13	0.220	0.00	0.04	1999
57094	A	G S ROOFING PRODUCTS CO INC (b)	Wilmington	7.00	n/a	0.01	0.01	2000
140499	A	AMERESCO HUNTINGTON BEACH, LLC	Huntington Beach	7.00	n/a	<0.01	<0.01	1995
55449	A	BKK CORPORATION, LANDFILL DIVISION GNRL	W. Covina	6.90	n/a	0.01	0.10	2000
800372	A	EQUILON ENTERPRISES,LLC	Carson	6.90	0.030	0.44	0.07	2001
5723	A	AEROCHEM INC	Orange	6.70	0.004	0.02	0.10	1999
34764	A	CADDOCK ELECTRONICS, INC.	Riverside	6.70	0.034	0.01	0.09	2002
8570	A	EMBEE INC	Santa Ana	6.62	n/a	0.21	0.58	2001
17301	A	OR CO., SANITATION DIST	Fountain Valley	6.60	0.032	0.39	0.34	2007
6643	A	TECHNICOLOR, INC	N. Hollywood	6.53	0.003	0.03	0.08	2007

Appendix A. Continued.

Facility ID	Facility Status	Facility Name	City	Cancer Risk in a million	Cancer Burden	Acute Hazard Index	Chronic Hazard Index	HRA Approved (year)
141585	A	RESOLUTION SPECIALTY MATERIALS, LLC	Lynwood	6.50	0.150	0.13	1.60	1995
11726	A	GE ENGINE SERVICES	Ontario	6.46	n/a	0.12	0.59	1999
2852	A	WALT DISNEY CO	Burbank	6.40	0.031	0.02	0.02	1997
800066	A	HITCO	Gardena	6.40	0.310	0.34	0.05	1998
1226	A	HYATT DIE CAST & ENGINEERING CORP	Cypress	6.24	0.008	<0.01	0.12	1996
800067	A	BOEING SATELLITE SYSTEMS INC	El Segundo	6.22	n/a	0.03	0.08	2000
146570	A	ROHM AND HAAS CHEMICALS LLC	La Mirada	6.20	n/a	0.54	0.76	1999
45262	A	LA CO, SANITATION DISTRICT UNIT NO.02	Glendale	6.17	n/a	0.01	0.05	1998
800026	A	ULTRAMAR INC.	Wilmington	6.08	n/a	0.80	0.07	2002
800267	A	DV INDUSTRIES, INC.	Lynwood	6.06	0.000	<0.01	0.01	2007
140961	A	GKN AEROSPACE TRANSPARENCY SYS INC	Garden Grove	6.00	n/a	<0.01	0.49	1996
800022	A	CALNEV PIPE LINE CO	Bloomington	5.90	n/a	0.00	0.07	1999
800198	A	ULTRAMAR INC	Wilmington	5.90	n/a	0.01	0.09	1999
800279	A	SFPP, L.P.	Orange	5.85	n/a	0.00	0.24	1999
8578	OB	ASSOCIATED CONCRETE PROD. INC	Santa Ana	5.80	n/a	0.13	0.57	1999
136148	A	E/M CORP, GREAT LAKES CHEMICAL CORP SUB	N Hollywood	5.80	0.000	0.28	0.57	1998
800129	A	SO PACIFIC PIPELINES INC	Rialto	5.75	n/a	<0.01	0.02	1996
154540	A	ARROWHEAD BRASS PROD. INC	Los Angeles	5.70	n/a	0.26	0.04	1995
800288	A	UNIV CAL IRVINE UNIT NO 01	Irvine	5.64	n/a	0.00	0.07	1996
22410	A	PALACE PLATING	Los Angeles	5.60	n/a	0.73	0.38	2004
38971	A	RICOH ELECTRONICS INC	Irvine	5.60	0.007	0.02	0.39	1995

Appendix A. Continued.

Facility ID	Facility Status	Facility Name	City	Cancer Risk in a million	Cancer Burden	Acute Hazard Index	Chronic Hazard Index	HRA Approved (year)
43201	A	SNOW SUMMIT SKI CORP	Big Bear Lake	5.53	0.003	0.01	0.01	2007
14146	A	MAC GREGOR YACHT CORP	Costa Mesa	5.50	n/a	0.00	0.10	1998
54424	A	L & L CUSTOM SHUTTERS	Placentia	5.50	0.000	0.15	0.21	2001
800409	A	TRW INC.	Redondo Beach	5.48	n/a	0.45	0.24	1998
800196	A	AMERICAN AIRLINES, INC.	Los Angeles	5.40	0.190	0.86	0.08	2005
800171	A	MOBIL OIL CO	Vernon	5.33	0.016	0.07	0.02	1997
134018	A	INDUSTRIAL CONTAINER SERVICES	Montebello	5.24	n/a	0.57	0.23	2000
4477	A	SOUTHERN CALIFORNIA EDISON COMPANY	Avalon	4.98	0.004	0.05	0.20	1997
109198	A	TORCH OPERATING CO. (STEARNS GAS CO)	Brea	4.97	n/a	0.05	0.01	2001
103888	A	A J INDUSTRIES INC, SARGENT-FLETCHER CO	El Monte	4.90	0.280	0.16	0.02	1999
11192	A	HI-SHEAR CORP	Torrance	4.80	0.002	0.04	0.02	2008
800038	A	DOUGLAS AIRCRAFT CO	Long Beach	4.80	n/a	0.15	0.11	1999
800264	A	EDGINGTON OIL, CO.	Long Beach	4.78	0.001	0.01	0.01	2002
101977	A	AMERIGAS PROPANE L.P.	Long Beach	4.70	0.002	0.59	0.97	1998
3950	A	CROWN CORK & SEAL COMPANY, INC.	La Mirada	4.60	0.000	0.00	0.11	1997
83102	A	LIGHT METALS	Industry	4.50	0.008	0.04	2.70	2002
37336	A	COMMERCE REFUSE TO ENERGY FACILITY (b)	Commerce	4.40	0.160	0.03	0.08	1997
136395	A	THOMASON MECHANICAL CORP, BENDER MACHINE	Vernon	4.40	0.001	0.99	0.02	2002
800041	A	DOW U.S.A.	Torrance	4.40	n/a	0.09	0.01	2000
93346	A	COOPER DRUM CO	S. El Monte	4.30	n/a	0.09	0.16	1997
115240	A	MARCHEM TECHNOLOGIES, LONZA INC	Long Beach	4.30	0.005	0.28	0.01	2001
131249	A	BP WEST COAST PRODUCTS LLC (b)	Wilmington	4.30	0.180	0.08	0.18	1995

Appendix A. Continued.

Facility ID	Facility Status	Facility Name	City	Cancer Risk in a million	Cancer Burden	Acute Hazard Index	Chronic Hazard Index	HRA Approved (year)
124506	A	BOEING ELECTRON DYNAMIC DEVICES	Torrance	4.17	n/a	0.46	0.07	1995
6459	OB	HONEYWELL INTERNATIONAL INC.	Vernon	4.13	n/a	0.01	0.01	1999
18439	OB	ACE PLATING CO INC	Los Angeles	4.08	n/a	0.58	0.19	1998
118406	A	CARSON COGENERATION COMPANY	Carson	3.86	n/a	0.16	0.01	2007
45489	A	GUIDANT CORP	Temecula	3.80	0.006	1.31	0.01	2002
126060	A	STERIGENICS US, LLC	Ontario	3.80	0.000	0.00	0.01	2007
8820	A	REULAND ELECTRIC CO. H.BRITTON LEES	Industry	3.70	0.002	<0.01	<0.01	1996
9114	I	SOMITEX PRINTS OF CALIFORNIA	Industry	3.70	n/a	0.06	<0.01	1996
17325	A	ACE CLEARWATER ENTERPRISES	Paramount	3.70	0.001	0.01	0.00	2002
106838	A	VALLEY-TODECO, INC	Sylmar	3.70	0.000	0.20	0.20	2000
105598	A	SENIOR FLEXONICS INC	Burbank	3.64	0.007	0.98	0.49	2001
7427	A	OWENS-BROCKWAY GLASS CONTAINER	Vernon	3.60	0.000	0.01	0.06	2001
800007	OB	ALLIED SIGNAL INC, EI SEGUNDO	El Segundo	3.58	n/a	0.02	0.53	2000
126197	A	ION BEAM APPLICATIONS INC.	Los Angeles	3.56	0.000	<0.01	0.01	1996
127568	A	ENGINEERED POLYMER SOLUTION	Montebello	3.53	0.000	0.05	0.48	2000
151899	A	MEDALLION CALIFORNIA PROPERTIES CO	Newhall	3.51	n/a	0.02	0.20	2000
140811	A	DUCOMMUN AEROSTRUCTURES INC	Monrovia	3.50	0.007	0.01	0.01	2002
8015	A	ANADITE INC	South Gate	3.48	n/a	0.63	0.78	2003
9163	A	INLAND EMPIRE UTILITIES AGENCY	Ontario	3.44	0.001	0.25	0.01	2007
151415	A	AERA ENERGY LLC	Brea	3.40	0.020	0.05	0.00	1999
153546	A	HUCK INTERNATIONAL INC	Carson	3.30	0.017	0.00	0.02	1999
126191	A	ION BEAM APPLICATIONS INC.	Los Angeles	3.29	0.000	<0.01	0.00	1996

Appendix A. Continued.

Facility ID	Facility Status	Facility Name	City	Cancer Risk in a million	Cancer Burden	Acute Hazard Index	Chronic Hazard Index	HRA Approved (year)
800063	A	GROVER PROD. CO	Los Angeles	3.29	0.039	0.88	0.07	2002
800189	A	DISNEYLAND RESORT	Anaheim	3.25	0.030	0.11	0.06	2009
6384	A	LA CO., RANCHO LOS AMIGOS MEDICAL CENTER	Downey	3.14	0.082	0.01	0.06	1999
800362	A	CONOCO-PHILLIPS CO.	Carson	3.10	n/a	0.67	0.26	2001
11435	A	THE PQ CORP	South Gate	3.00	n/a	0.00	0.01	1998
800395	A	BP WEST COAST PRODUCTS, ARCO CARSON	Carson	3.00	0.001	<0.01	0.02	1994
10005	A	ELECTRONIC CHROME GRINDING CO, INC.	Santa Fe Springs	2.96	0.010	0.24	0.06	2001
18452	A	UCLA (REGENTS OF UC) (b)	Los Angeles	2.91	n/a	0.01	0.11	1999
2613	A	US GOVT, NAVY DEPT, NAVAL WEAPONS STN	Seal Beach	2.90	0.004	0.11	0.00	2002
16660	A	MC DONNELL DOUGLAS SPACE SYS CO. sub of BOEING CO.	Huntington Beach	2.89	0.001	0.23	0.05	2007
116868	A	EQUILON ENTERPRISES,LLC	Rialto	2.88	n/a	0.00	0.04	1999
800035	A	CONTINENTAL AIRLINES INC	Los Angeles	2.83	n/a	0.01	0.13	1997
48274	A	FENDER MUSICAL INST	Corona	2.81	0.004	0.03	0.37	1997
151798	A	TESORO REFINING AND MARKETING CO.	Carson	2.77	n/a	0.14	0.00	1999
151984	A	TESORO REFINING AND MARKETING CO.	Wilmington	2.75	0.002	0.00	0.01	2000
46268	A	CALIFORNIA STEEL INDUSTRIES, INC.	Fontana	2.74	0.016	0.16	0.31	1995
800030	A	CHEVRON U.S.A. INC	El Segundo	2.73	n/a	0.29	0.13	2001
5887	A	ANABOLIC INC	Irvine	2.70	0.154	0.03	0.00	1997
16642	A	ANHEUSER-BUSCH INC.(LA BREWERY)	Van Nuys	2.70	n/a	0.02	0.13	1999
25440	A	ROBERTSHAW CONTROLS CO, GRAYSON CONTROLS	Long Beach	2.70	0.003	0.00	0.96	1998
27701	A	CADDOCK ELECTRONICS, INC.	Riverside	2.70	n/a	0.02	0.06	2002
137517	A	RELIANT ENERGY ETIWANDA,LLC	Etiwanda	2.67	0.160	0.01	0.17	2000

Appendix A. Continued.

Facility ID	Facility Status	Facility Name	City	Cancer Risk in a million	Cancer Burden	Acute Hazard Index	Chronic Hazard Index	HRA Approved (year)
133987	A	PLAINS EXPLORATION & PRODUCTION CO. LP	Inglewood	2.65	n/a	0.01	0.07	1997
134943	A	ALCOA GLOBAL FASTERNERS, INC.	Torrance	2.61	n/a	0.55	0.04	2008
35483	A	WARNER BROTHERS STUDIO FACILITIES	Burbank	2.60	0.008	0.10	0.26	1997
7949	A	CUSTOM FIBERGLASS MFG CO/CUSTOM HARDTOP	Long Beach	2.50	0.078	<0.01	<0.01	1995
79682	A	RAMCAR BATTERIES INC	Commerce	2.43	n/a	0.04	0.17	1998
800278	A	SFPP, L.P.	Carson	2.43	n/a	0.00	0.10	1999
18188	A	PLASMA TECHNOLOGY INC.	Torrance	2.40	0.000	0.11	0.00	2007
18508	A	AIR PROD & CHEM INC, PACIFIC ANCHOR CHEM	Los Angeles	2.40	0.000	0.10	0.81	1999
800202	A	UNIVERSAL STUDIOS INC	Universal City	2.40	n/a	<0.01	0.03	1996
800387	A	CALIFORNIA INSTITUTE OF TECHNOLOGY	Pasadena	2.40	n/a	0.05	0.00	2007
152033	A	TESORO REFINING AND MARKETING CO.	Long Beach	2.39	n/a	0.00	0.01	1999
133405	A	BODYCOTE INC./BODYCOTE THERMAL PROCESSING	Los Angeles	2.36	n/a	0.03	0.20	1999
1208	A	MICROSEMI CORPORATION	Santa Ana	2.30	0.004	0.01	0.01	2001
124838	A	EXIDE TECHNOLOGIES (b)	Vernon	2.30	0.010	0.53	0.04	1999
800056	A	GATX STORAGE TERMINALS CORP	San Pedro	2.30	n/a	0.00	0.03	1997
103659	OB	FOUR MEDIA CO.	Burbank	2.22	n/a	0.61	0.04	2004
99773	A	CYTEC FIBERITE INC.	Anaheim	2.20	0.000	0.04	0.19	2000
9668	A	DELUXE LABORATORIES INC, DELUXE LABORATOR	Hollywood	2.10	0.000	0.01	0.02	2000
40829	A	HAWKER PACIFIC INC	Sun Valley	2.07	0.000	0.04	0.09	2009
18931	A	TAMCO	Rancho Cucamonga	2.04	0.017	0.01	0.24	2001
142267	A	FS PRECISION TECH LLC	Rancho Dominguez	2.03	n/a	0.08	0.15	2001
800181	A	CALIFORNIA PORTLAND CEMENT CO (b)	Colton	2.00	0.001	<0.01	0.39	1996

Appendix A. Continued.

Facility ID	Facility Status	Facility Name	City	Cancer Risk in a million	Cancer Burden	Acute Hazard Index	Chronic Hazard Index	HRA Approved (year)
2605	A	3M CO	Northridge	1.98	0.002	0.40	0.38	1996
14502	A	VERNON UTILITY DEPARTMENT	Vernon	1.98	0.000	0.01	0.01	2007
54627	A	HICKORY SPRINGS OF CAL INC	Commerce	1.95	n/a	0.01	0.48	1998
800325	A	TIDELANDS OIL PRODUCTION CO (L.B. Oil Co)	Long Beach	1.90	n/a	0.07	0.62	1999
10245	A	LA CITY SANITATION BUREAU, TERMINAL ISLAN	San Pedro	1.83	0.005	0.02	0.03	2000
23559	OB	JOHNSON CONTROLS BATTERY GROUP INC	Fullerton	1.80	n/a	0.01	0.08	2001
800003	A	HONEYWELL INTERNATIONAL INC	Torrance	1.77	n/a	0.00	0.01	1999
1947	A	THUMS LONG BEACH CO, UNIT NO.01	Long Beach	1.70	0.170	<0.01	0.14	1996
8309	A	CAMBRO MANUFACTURING CO	Huntington Beach	1.70	0.002	0.00	0.15	2000
22467	A	LEFIELL MFG CO	Santa Fe Springs	1.70	0.000	0.75	0.17	2000
82512	A	BREA CANYON OIL CO	Wilmington	1.70	n/a	0.01	<0.01	1996
119907	A	BERRY PETROLEUM	Santa Clarita	1.60	n/a	0.20	0.73	1999
119920	A	ALUMINUM COMPANY OF AMERICA	Vernon	1.60	n/a	0.30	0.30	1996
133660	A	HAYDEN INDUSTRIAL PRODUCTS	Corona	1.60	n/a	0.82	0.44	1998
107350	A	N O-RING CORPORATION	Downey	1.53	n/a	0.00	0.01	2001
2638	A	OCCIDENTAL COLLEGE	Los Angeles	1.50	0.002	0.07	0.01	2007
126536	A	CONSOLIDATED FOUNDRIES, POMONA	Pomona	1.50	n/a	0.00	0.02	1999
25070	A	LA CO., SANITATION DISTRICT (b)	Whittier	1.40	0.001	<0.01	<0.01	1996
44577	A	LONG BEACH CITY, SERRF PROJECT (b)	Long Beach	1.40	n/a	0.00	0.03	2000
82513	A	BREA CANYON OIL COMPANY INC	Harbor City	1.40	n/a	0.02	<0.01	1996
800408	A	TRW INC.	Manhattan Beach	1.37	n/a	0.92	0.10	1998
3968	A	TABC INC.	Long Beach	1.35	0.002	0.05	0.22	1999

Appendix A. Continued.

Facility ID	Facility Status	Facility Name	City	Cancer Risk in a million	Cancer Burden	Acute Hazard Index	Chronic Hazard Index	HRA Approved (year)
62679	A	KOP-COAT INC	Vernon	1.33	n/a	0.00	0.49	1997
123087	A	INDALEX WEST INC.	Industry	1.27	n/a	0.00	0.03	1999
126544	A	PAC FOUNDRIES INDUSTRY	Industry	1.27	n/a	0.59	0.09	1996
2526	A	CHEVRON USA INC	Van Nuys	1.25	0.007	<0.01	0.01	1996
22551	A	THUMS LONG BEACH CO, UNIT NO.04	Long Beach	1.20	0.000	0.00	0.01	2000
42633	A	LA CO., SANITATION DIST, SPADRA LANDFILL	Walnut	1.20	0.002	<0.01	<0.01	1996
106009	A	VENOCO INC.	Beverly Hills	1.16	n/a	0.05	0.00	2005
152054	A	BREA CANYON OIL COMPANY, INC.	Brea	1.14	n/a	<0.01	0.12	1996
124806	OB	EXIDE TECHNOLOGIES	Industry	1.00	n/a	0.00	0.04	1999
800127	A	THE GAS CO.	Montebello	0.99	0.000	0.01	0.01	2009
7730	A	E R CARPENTER CO INC	Riverside	0.96	0.000	0.03	1.34	2003
20375	A	PRUDENTIAL OVERALL SUPPLY	Riverside	0.96	0.000	0.03	0.08	1997
6670	A	TRU-CUT, INC.	Los Angeles	< 1	0.000	0.00	0.04	2002
47056	OB	MYERS CONTAINER CORP	Huntington Park	0.90	0.000	0.23	2.00	2002
800301	A	ITT GILFILLAN UNIT NO.01	Van Nuys	0.86	0.000	0.12	0.19	1998
3134	A	THUMS LONG BEACH CO, UNIT NO.05	Long Beach	0.84	0.000	<0.01	<0.01	1996
18378	A	GRUBER SYSTEMS, INC.	Valencia	0.83	0.000	0.14	0.10	2004
22556	A	THUMS LONG BEACH CO, UNIT NO.02	Long Beach	0.80	0.000	<0.01	<0.01	1996
111415	A	VAN CAN CO, SUBSIDIARY OF VAN CAMP SEAFO	Fontana	0.80	0.000	<0.01	0.08	1996
120088	A	BREITBURN ENERGY CO.	Santa Fe Springs	0.79	0.000	0.01	0.04	1998
126964	A	EDWARDS LIFESCIENCES LLC	Irvine	0.75	0.000	<0.01	0.00	1995
22373	A	CONTAINER CORPORATION OF AMERICA	Los Angeles	0.74	0.000	<0.01	<0.01	1996

Appendix A. Continued.

Facility ID	Facility Status	Facility Name	City	Cancer Risk in a million	Cancer Burden	Acute Hazard Index	Chronic Hazard Index	HRA Approved (year)
24060	A	TOMKINS INDUSTRIES INC-LASCO PRODS GROUP	Anaheim	0.72	0.000	<0.01	0.02	1996
800091	A	MOBIL OIL CORP	Anaheim	0.72	0.000	0.01	0.00	1999
772	A	DEFT INC	Irvine	0.70	0.000	<0.01	<0.01	1995
24756	A	CRANE CO, HYDRO-AIRE DIV	Burbank	0.63	0.000	0.04	0.05	1997
115394	A	AES ALAMITOS, LLC	Long Beach	0.63	0.000	0.00	0.02	1999
134931	A	ALCOA GLOBAL FASTENERS, INC.	Fullerton	0.61	0.000	1.90	0.02	2003
24957	A	GLENDALE CITY	Glendale	0.59	0.000	0.00	0.02	1999
15647	A	CUSTOM ENAMELERS INC	Fountain Valley	0.55	0.000	0.11	0.02	2000
3093	A	LA CO., OLIVE VIEW/UCLA MEDICAL CENTER	Sylmar	0.53	0.000	0.00	0.02	1999
21895	A	AC PRODUCTS, INC.	Placentia	0.53	0.000	0.00	0.00	2003
6281	A	US GOVT,MARINE CORPS AIR STATION,EL TORO	El Toro	0.51	0.000	<0.01	<0.01	1996
1634	OB	STEELCASE INC, WESTERN DIV	Tustin	0.50	0.000	<0.01	<0.01	1995
39388	A	THUMS LONG BEACH CO, UNIT NO.03	Long Beach	0.50	0.000	<0.01	<0.01	1996
61160	A	GE ENGINE SERVICES	Ontario	0.50	0.000	0.70	0.01	2003
152501	A	PRECISION SPECIALTY METALS, INC.	Los Angeles	0.45	0.000	0.38	0.15	2001
43436	A	TIMCO	Fontana	0.43	0.000	0.00	0.43	1997
18990	A	LIFE PAINT COMPANY	Santa Fe Springs	0.41	0.000	0.02	0.00	2001
12660	A	GOLDSHIELD FIBERGLASS, INC, PLANT #58	Fontana	0.40	0.000	0.01	0.05	1994
115536	A	AES REDONDO BEACH, LLC	Redondo Beach	0.40	0.000	0.01	0.04	1998
122295	A	FALCON FOAM, A DIV OF ALTAS ROOFING	Los Angeles	0.40	0.000	0.00	0.00	1999
115663	A	EL SEGUNDO POWER, LLC	El Segundo	0.34	0.000	0.00	0.01	2000
25638	A	BURBANK CITY, PUB SERV DEPT	Burbank	0.33	0.000	0.33	0.01	1996

Appendix A. Continued.

Facility ID	Facility Status	Facility Name	City	Cancer Risk in a million	Cancer Burden	Acute Hazard Index	Chronic Hazard Index	HRA Approved (year)
124805	A	EXIDE TECHNOLOGIES	Commerce	0.33	0.000	0.00	0.04	2000
550	A	LA CO., INTERNAL SERVICE DEPT	Los Angeles	0.32	0.000	0.02	0.00	2008
112192	OB	CONSOLIDATED DRUM RECONDITIONING CO. INC.	South Gate	0.31	0.000	0.00	0.00	1997
800343	A	BOEING SATELLITE SYSTEMS, INC.	El Segundo	0.30	0.000	<0.01	0.21	1996
24520	A	LA CO, SANITATION DISTRICTS	Rolling Hills Estates	0.29	0.000	<0.01	<0.01	1998
99119	A	INTERPLASTIC CORP	Hawthorne	0.28	0.000	0.05	0.32	1999
122300	A	BASF CORPORATION	Colton	0.28	0.000	0.56	0.02	2002
19989	OB	PARKER HANNIFIN AEROSPACE CORP	Irvine	0.27	0.000	0.01	0.00	1999
107149	A	MARKLAND MANUFACTURING INC.	Santa Ana	0.26	0.000	0.06	0.12	2007
102075	A	FOAMEX (b)	Orange	0.18	0.000	0.39	0.43	1994
16264	A	INTL COATINGS CO INC	Cerritos	0.17	0.000	0.00	0.00	1999
800074	A	LA CITY, DWP HAYNES GENERATING STATION	Long Beach	0.17	0.000	0.00	0.01	2000
48300	A	PRECISION TUBE BENDING	Santa Fe Springs	0.15	0.000	0.00	0.00	2002
800168	A	PASADENA CITY, DWP	Pasadena	0.15	0.000	0.70	0.00	1996
800193	A	LA CITY, DWP; VALLEY STM PLANT	Sun Valley	0.15	0.000	0.25	0.00	1999
42676	A	AES PLACERITA, INC.	Newhall	0.11	0.000	0.08	0.01	2003
114801	A	RHODIA INC.	Carson	0.11	0.000	0.02	0.05	2006
115389	A	SO CAL EDISON CO	Huntington Beach	0.11	0.000	0.00	0.00	1999
7416	A	PRAXAIR INC	Wilmington	0.11	0.000	0.04	0.03	2001
1992	A	PRUDENTIAL OVERALL SUPPLY	Van Nuys	0.10	0.000	0.00	0.00	1997
16044	I	SPECIALTY ORGANICS INC	Irwindale	0.10	0.000	0.00	0.23	1997
25012	A	AMADA MFG AMERICA, INC.	La Mirada	<0.1	0.000	0.00	0.00	2002

Appendix A. Continued.

Facility ID	Facility Status	Facility Name	City	Cancer Risk in a million	Cancer Burden	Acute Hazard Index	Chronic Hazard Index	HRA Approved (year)
24812	A	FARMER BROS CO	Torrance	0.09	0.000	0.00	0.02	1999
94872	A	METAL CONTAINER CORP.	Mira Loma	0.08	0.000	0.39	0.36	2002
111110	A	BRISTOL FIBERLITE IND	Santa Ana	0.08	0.000	0.00	0.02	1995
156741	A	HARBOR COGENERATION CO.	Wilmington	0.05	0.000	0.02	0.00	2002
20144	OB	CANON BUSINESS MACHINES INC	Costa Mesa	0.05	0.000	0.00	0.07	1999
800320	A	AMVAC CHEMICAL CORP.	Los Angeles	0.04	0.000	0.07	0.34	2004
45938	A	E.M.E. INC/ELECTRO MACHINE & ENGINEERING	Compton	0.04	0.000	0.00	<0.01	2001
114847	A	FOAMEX L.P. (b)	Compton	0.04	0.000	0.00	0.96	1997
117785	A	BALL METAL BEVERAGE CONTAINER CORP.	Torrance	0.04	0.000	0.21	0.91	2001
22229	A	PROCESSES BY MARTIN, INC.	Lynwood	0.04	0.000	0.00	0.00	2002
800075	A	LA CITY, DWP SCATTERGOOD GENERATING STN.	Playa del Rey	0.03	0.000	0.00	0.00	2000
145368	A	SEMMATERIALS LP	Fontana	0.02	0.000	0.33	0.01	1999
115586	A	SUNDANCE SPAS	Chino	0.02	0.000	0.05	0.43	1996
51620	A	WHEELABRATOR NORWALK ENERGY COMPANY	Norwalk	0.02	0.000	0.01	0.02	1996
800009	A	AMERON PROTECTIVE COATINGS DIV	Brea	0.01	0.000	0.24	0.24	2000
55711	A	SUNLAW COGENERATION PARTNERS I	Vernon	0.01	0.000	0.01	0.00	1996
124016	A	OAKITE PRODUCTS, INC.	La Mirada	0.00	0.000	0.14	0.08	2000
55714	A	SUNLAW COGENERATION PARTNERS I	Vernon	0.00	0.000	0.01	0.00	1996
119127	A	PRC DE SOTO INTERNATIONAL	Glendale	0.00	0.000	<0.01	<0.01	2002
809	A	GARNER GLASS CO	Claremont	0.00	0.000	0.00	0.00	1996
1732	OB	INTL ELECTRONIC RESEARCH CORP	Burbank	0.00	0.000	0.00	0.00	1996
1746	A	UNITED ALLOYS INC	Los Angeles	0.00	0.000	0.00	0.00	1998

Appendix A. Continued.

Facility ID	Facility Status	Facility Name	City	Cancer Risk in a million	Cancer Burden	Acute Hazard Index	Chronic Hazard Index	HRA Approved (year)
3084	A	CARDINAL INDUSTRIAL FINISHES INC	South El Monte	0.00	0.000	0.00	0.00	1996
3578	A	PRUDENTIAL OVERALL SUPPLY	Carson	0.00	0.000	0.00	0.00	2000
6163	A	OHLINE	Gardena	0.00	0.000	0.26	0.72	1996
6315	A	FLO-KEM, INC.	Rancho Dominguez	0.00	0.000	0.03	0.61	1999
7010	A	PRUDENTIAL OVERALL SUPPLY	Irvine	0.00	0.000	0.00	0.00	1995
8560	A	PRUDENTIAL OVERALL SUPPLY CO	Commerce	0.00	0.000	0.00	0.00	1995
8935	A	TRAIL RITE INC	Santa Ana	0.00	0.000	0.00	0.30	1996
10656	A	NEWPORT LAMINATES	Santa Ana	0.00	0.000	<0.01	<0.01	1996
19953	OB	RISTON KELLER INC	Irvine	0.00	0.000	<0.01	0.01	1996
21544	A	US GOVT, MARINE CORPS AIR STA @BLD	Tustin	0.00	0.000	0.00	0.00	2000
22092	A	WESTERN TUBE & CONDUIT CORP	Long Beach	0.00	0.000	0.02	0.62	1997
24647	A	J. B. I. INC	Compton	0.00	0.000	0.00	0.17	1999
40806	A	ASSOCIATED PLASTICS INC	Riverside	0.00	0.000	0.73	0.20	1997
51849	A	ELIMINATOR CUSTOM BOATS	Mira Loma	0.00	0.000	<0.01	<0.01	1995
70021	A	XERXES CORP (A DELAWARE CORP)	Anaheim	0.00	0.000	<0.01	<0.01	1996
144677	A	PRATT & WHITNEY ROCKETDYNE/RUBY ACQ ENT	Canoga Park	0.00	0.000	<0.01	<0.01	1996
149241	A	VERMAX, INC.	Pomona	0.00	0.000	<0.01	0.25	1995
800018	A	BAXTER HEALTH CARE CORP, BENTLEY DIV	Irvine	0.00	0.000	<0.01	0.37	1994

Notes:

- (a) Revised HRA after the implementation of the RRP is being evaluated by the AQMD staff.
- (b) AQMD staff has requested these facilities to update their HRAs based on their most recent ATIRs.
- (c) This includes risk attributable to the emergency DICE. The total facility risks excluding the emergency DICE are less than 10 in a million.

Appendix B

Rule Adoptions and Amendments in 2008

Rule 1401 – New Source Review of Air Toxic Compounds

Rule 1401 establishes cancer and non-cancer risk requirements for new, relocated, or modified sources of toxic air contaminants. Rule 1401 was amended to add diesel particulate emissions from internal combustion engines (diesel PM) to the list of toxic air contaminants (TACs) in the rule. Diesel PM has both cancer and chronic health effects. The Rule 1401 TAC list is also used for Rule 1402 - Control of Toxic Air Contaminants from Existing Sources. Therefore, in addition to impacts to new sources, the staff report assesses impacts for existing facilities. *[March 2008]*

Rule 1472 – Requirements for Facilities with Multiple Stationary Emergency Standby Diesel-fueled Internal Combustion Engines

Rule 1472 establishes requirements for facilities with multiple diesel engines in order to reduce cumulative risk from groups of diesel engines in close proximity of one another. It also provides a streamlined approach to identifying those sources with diesel PM emissions from stationary emergency standby diesel fueled engines or ICEs that exceed the Rule 1402 - Control of Toxic Air Contaminants from Existing Sources, action risk level of 25 in a million and establishes specific requirements to reduce the health risk. Options available to comply include reducing operating hours; replacing with newer, cleaner diesel engines; replacing with alternative fueled engines; and/or add-on controls. *[March 2008]*

Rule 1469 – Hexavalent Chromium Emissions from Chromium Electroplating and Chromic Acid Anodizing Operation

Rule 1469 was amended to incorporate the more stringent requirements of the State Airborne Toxic Control Measure (ATCM) for Chromium Plating and Chromic Acid Anodizing Facilities amended in 2007. Additional amendments beyond the ATCM include more detailed housekeeping requirements and enhanced monitoring, recordkeeping and testing of add-on air pollution control devices. The amendment further reduces hexavalent chromium emissions by requiring lower emission limits for some operators. *[December 2008]*

Regulation X (Subpart A) – National Emission Standards for Hazardous Air Pollutants (NESHAP) for Source Categories

U.S. EPA has authorized local air districts to directly implement federal standards established in 40 Code of Federal Regulations (CFR) Part 61, National Emission Standards for Hazardous Air Pollutants (NESHAP). NESHAPs govern the operation of

new and existing sources specifically identified in Part 61 of the CFR that emit substances that have been designated as hazardous air pollutants pursuant to Section 112 of the Clean Air Act (CAA) Amendments. The NESHAP change involved extensions to the deadlines imposed for source owners and operators to conduct an initial or subsequent performance tests required by applicable regulations. Affected industries include: all source categories covered by NESHAP; synthetic organic chemicals manufacturing industry; petroleum refineries; and steam-generating units. *[April 2008]*