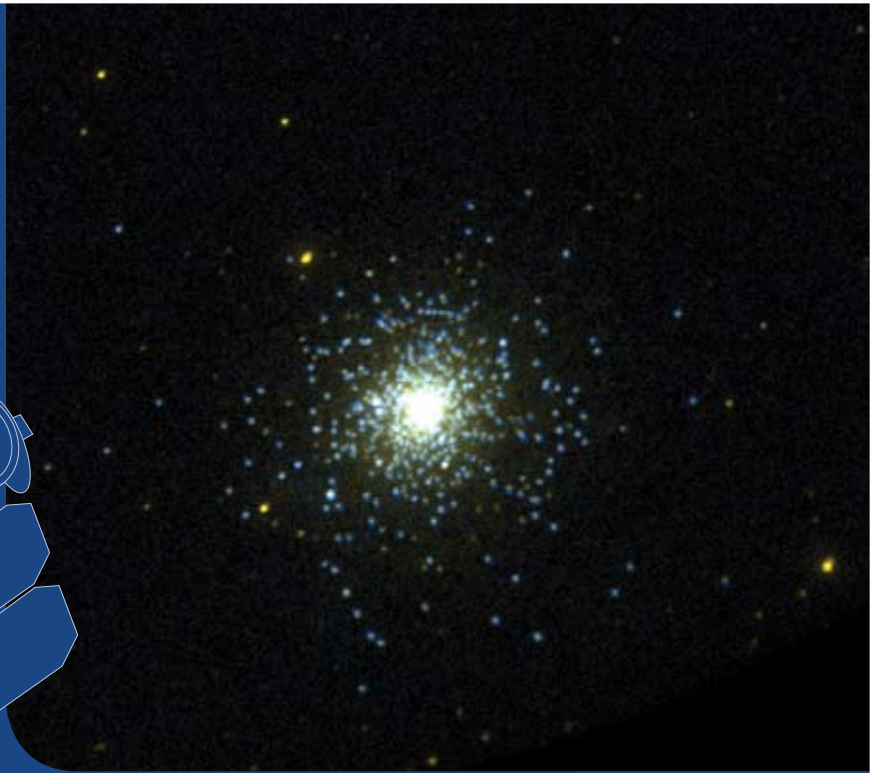
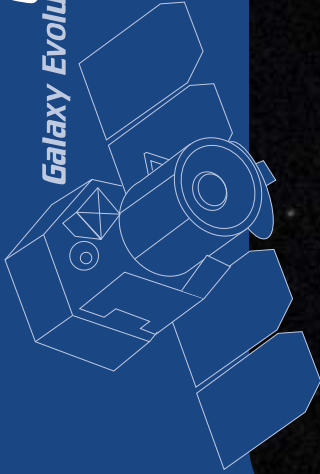


GALEX
Galaxy Evolution Explorer

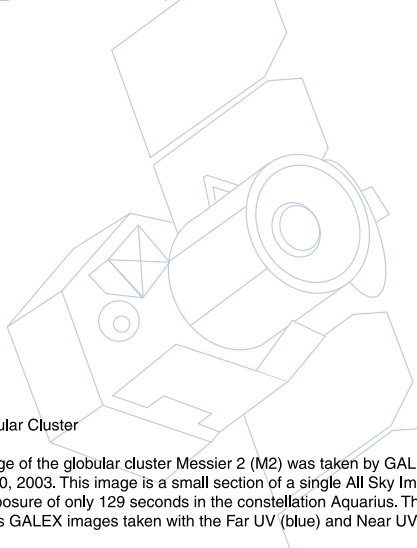
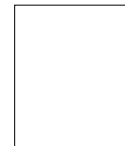


M2 Globular Cluster



National Aeronautics and
Space Administration
Jet Propulsion Laboratory
California Institute of Technology
Pasadena, California

GALEX
www.galex.caltech.edu



M2 Globular Cluster

This image of the globular cluster Messier 2 (M2) was taken by GALEX on August 20, 2003. This image is a small section of a single All Sky Imaging Survey (AIS) exposure of only 129 seconds in the constellation Aquarius. This picture combines GALEX images taken with the Far UV (blue) and Near UV detectors (red).

Globular clusters are gravitationally bound systems of hundreds of thousands of stars that orbit in the halos of galaxies. The globular clusters in our Milky Way galaxy contain some of the oldest stars known. M2 lies 33,000 light years from our Sun with stars distributed in a spherical system with a radius of approximately 100 light years.

To:
