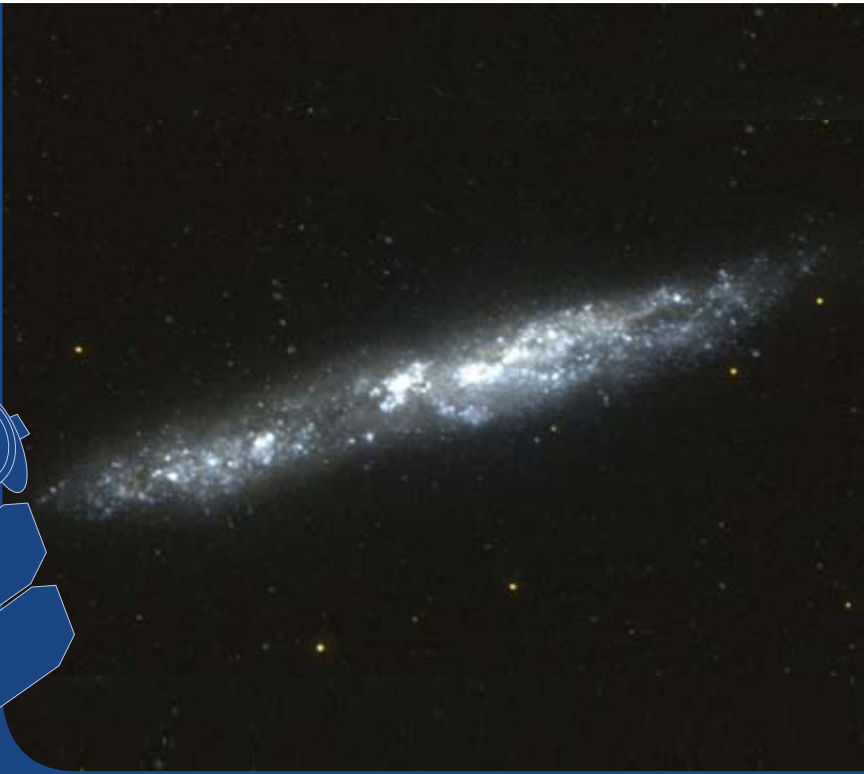


GALEX

Galaxy Evolution Explorer



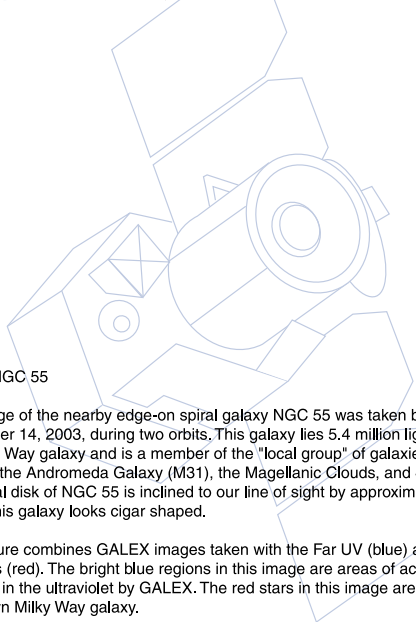
Galaxy NGC 55



National Aeronautics and
Space Administration

Jet Propulsion Laboratory
California Institute of Technology
Pasadena, California

GALEX
www.galex.caltech.edu



Galaxy NGC 55

This image of the nearby edge-on spiral galaxy NGC 55 was taken by GALEX on September 14, 2003, during two orbits. This galaxy lies 5.4 million light years from our Milky Way galaxy and is a member of the "local group" of galaxies that also includes the Andromeda Galaxy (M31), the Magellanic Clouds, and 40 other galaxies. The spiral disk of NGC 55 is inclined to our line of sight by approximately 80 degrees, and so this galaxy looks cigar shaped.

This picture combines GALEX images taken with the Far UV (blue) and Near UV detectors (red). The bright blue regions in this image are areas of active star formation detected in the ultraviolet by GALEX. The red stars in this image are foreground stars in our own Milky Way galaxy.

To:
