

Table XVI-1  
MELANOMA OF THE SKIN (Invasive)

TRENDS IN SEER INCIDENCE<sup>a</sup> AND U.S. MORTALITY<sup>b</sup> USING THE JOINTPOINT REGRESSION PROGRAM, 1975-2002  
WITH UP TO THREE JOINTPOINTS BY RACE AND SEX

		<u>Jointpoint Segment 1</u>		<u>Jointpoint Segment 2</u>		<u>Jointpoint Segment 3</u>		<u>Jointpoint Segment 4</u>	
		<u>Year</u>	<u>APC</u>	<u>Year</u>	<u>APC</u>	<u>Year</u>	<u>APC</u>	<u>Year</u>	<u>APC</u>
<u>SEER Cancer Incidence<sup>a</sup></u>									
All Races	Male and Female	1975-1981	6.1 <sup>c</sup>	1981-2002	2.8 <sup>c</sup>				
All Races	Male	1975-1985	5.4 <sup>c</sup>	1985-2000	3.3 <sup>c</sup>	2000-2002	-1.5		
All Races	Female	1975-1981	5.2 <sup>c</sup>	1981-2002	2.2 <sup>c</sup>				
White	Male and Female	1975-1981	6.3 <sup>c</sup>	1981-2002	3.1 <sup>c</sup>				
White	Male	1975-1985	5.7 <sup>c</sup>	1985-2000	3.6 <sup>c</sup>	2000-2002	-1.2		
White	Female	1975-1980	6.1 <sup>c</sup>	1980-2002	2.6 <sup>c</sup>				
Black	Male and Female	1975-2002	-0.1						
Black	Male	1975-2002	1.5						
Black	Female	1975-2002	-1.4 <sup>c</sup>						
<u>SEER Delay-Adjusted Incidence<sup>a</sup></u>									
White	Male and Female	1975-1980	6.6 <sup>c</sup>	1980-2002	3.5 <sup>c</sup>				
White	Male	1975-1985	5.8 <sup>c</sup>	1985-2002	3.8 <sup>c</sup>				
White	Female	1975-1981	6.1 <sup>c</sup>	1981-1993	2.2 <sup>c</sup>	1993-2002	4.1 <sup>c</sup>		
<u>U.S. Cancer Mortality<sup>b</sup></u>									
All Races	Male and Female	1975-1977	4.7	1977-1990	1.4 <sup>c</sup>	1990-2002	-0.3 <sup>c</sup>		
All Races	Male	1975-1987	2.4 <sup>c</sup>	1987-1998	0.8 <sup>c</sup>	1998-2002	-1.6 <sup>c</sup>		
All Races	Female	1975-1989	0.8 <sup>c</sup>	1989-2002	-0.7 <sup>c</sup>				
White	Male and Female	1975-1990	1.6 <sup>c</sup>	1990-2002	-0.2				
White	Male	1975-1987	2.6 <sup>c</sup>	1987-1998	0.9 <sup>c</sup>	1998-2002	-1.5 <sup>c</sup>		
White	Female	1975-1988	1.0 <sup>c</sup>	1988-2002	-0.5 <sup>c</sup>				
Black	Male and Female	1975-2002	-0.6 <sup>c</sup>						
Black	Male	1975-2002	-1.2 <sup>c</sup>						
Black	Female	1975-2002	-0.2						

Jointpoint Regression Program Version 3.0, April 2005, National Cancer Institute. (<http://srab.cancer.gov/jointpoint/>).

The APC is the Annual Percent Change based on rates age-adjusted to the 2000 US Std Population (19 age groups - Census P25-1130).

<sup>a</sup> Trends are from the SEER 9 areas.

<sup>b</sup> Trends are from the NCHS public use data file for the total US.

<sup>c</sup> The APC is significantly different from zero (p<.05).

Table XVI-2  
MELANOMA OF THE SKIN (Invasive)

SEER INCIDENCE RATES, AGE-ADJUSTED AND AGE-SPECIFIC RATES<sup>a</sup>, BY RACE AND SEX

	All Races			Whites			Blacks		
	Total	Males	Females	Total	Males	Females	Total	Males	Females
<u>AGE-ADJUSTED RATES</u>									
YEAR OF DIAGNOSIS:									
1975	7.9	8.5	7.4	8.7	9.4	8.2	-	-	-
1976	8.1	8.7	7.7	9.0	9.5	8.5	-	-	-
1977	8.9	9.8	8.2	9.8	10.8	9.1	-	-	-
1978	8.9	9.5	8.7	10.1	10.7	9.9	-	-	-
1979	9.5	10.6	8.9	10.7	11.9	10.0	-	-	-
1980	10.5	11.8	9.6	12.0	13.4	11.1	-	-	-
1981	11.1	12.1	10.4	12.5	13.5	11.9	-	-	-
1982	11.2	12.5	10.3	12.7	14.1	11.8	-	-	-
1983	11.1	12.6	10.0	12.5	14.3	11.4	-	-	-
1984	11.4	12.9	10.4	13.0	14.8	11.8	-	-	-
1985	12.7	15.1	11.1	14.3	16.9	12.5	-	-	-
1986	13.3	15.7	11.6	15.1	17.7	13.2	-	-	-
1987	13.7	15.9	12.1	15.5	18.0	13.8	-	-	-
1988	12.9	15.0	11.4	14.8	17.3	13.2	-	-	-
1989	13.7	16.4	11.8	15.8	18.9	13.7	-	-	-
1990	13.8	16.6	11.8	16.0	19.1	13.8	-	-	-
1991	14.6	17.5	12.5	17.0	20.3	14.6	-	-	-
1992	14.8	18.3	12.2	17.1	21.1	14.3	-	-	-
1993	14.5	18.0	12.1	16.8	20.7	14.1	-	-	-
1994	15.6	19.7	12.6	18.2	22.9	14.8	-	-	-
1995	16.3	20.2	13.7	19.1	23.3	16.2	1.7	-	-
1996	17.2	21.5	14.1	20.2	25.0	16.7	-	-	-
1997	17.6	21.5	14.8	20.6	24.9	17.6	-	-	-
1998	17.7	22.0	14.8	21.1	25.8	17.9	1.2	-	-
1999	18.0	22.6	14.9	21.4	26.4	18.0	1.2	-	-
2000	18.6	23.5	15.2	22.3	27.8	18.5	-	-	-
2001	19.3	23.9	16.1	23.4	28.4	19.9	-	-	-
2002	18.3	22.6	15.3	21.9	26.7	18.6	-	-	-
<u>AGE-ADJUSTED RATES, 1998-2002</u>									
AGE AT DIAGNOSIS:									
All ages	18.4	22.9	15.2	22.0	27.0	18.6	1.0	1.4	0.8
Under 65	12.8	13.4	12.3	15.7	16.1	15.3	0.6	0.6	0.6
65 and over	56.8	88.6	35.3	66.0	102.6	41.1	3.8	6.7	-
All ages(IARC world std) <sup>b</sup>	13.6	15.9	11.8	16.4	18.9	14.5	0.7	0.8	0.6
<u>AGE-SPECIFIC RATES, 1998-2002</u>									
AGE AT DIAGNOSIS:									
<1	-	-	-	-	-	-	-	-	-
1-4	-	-	-	-	-	-	-	-	-
5-9	-	-	-	-	-	-	-	-	-
10-14	0.4	-	0.5	0.5	-	0.7	-	-	-
15-19	1.6	1.1	2.0	2.0	1.4	2.6	-	-	-
20-24	4.8	3.2	6.4	6.2	4.1	8.3	-	-	-
25-29	7.6	5.5	9.9	9.9	6.9	13.1	-	-	-
30-34	11.2	8.3	14.1	14.2	10.4	18.2	-	-	-
35-39	14.1	11.9	16.3	17.4	14.6	20.4	-	-	-
40-44	19.1	18.2	20.0	23.3	22.0	24.7	-	-	-
45-49	23.1	24.0	22.3	28.1	28.8	27.5	-	-	-
50-54	28.4	32.6	24.3	34.2	38.9	29.6	-	-	-
55-59	35.6	44.5	27.0	41.8	51.8	32.1	-	-	-
60-64	40.8	53.9	28.7	48.8	63.5	34.9	-	-	-
65-69	48.6	67.3	32.6	58.1	79.3	39.5	-	-	-
70-74	58.4	86.8	36.0	68.5	100.9	42.4	-	-	-
75-79	60.0	95.4	35.0	69.6	110.3	40.8	-	-	-
80-84	64.6	107.0	38.8	73.5	122.3	43.8	-	-	-
85+	57.4	106.6	36.3	63.5	121.3	39.4	-	-	-

<sup>a</sup> SEER 9 areas. Rates are per 100,000 and are age-adjusted to the 2000 US Std Population (19 age groups - Census P25-1130), unless noted.

<sup>b</sup> SEER 9 areas. Rates are per 100,000 and are age-adjusted to the IARC world standard population.

- Statistic not shown. Rate based on less than 25 cases for the time interval.

Table XVI-3  
MELANOMA OF THE SKIN (Invasive)

U.S. DEATH RATES, AGE-ADJUSTED AND AGE-SPECIFIC RATES<sup>a</sup>, BY RACE AND SEX

	All Races			Whites			Blacks		
	Total	Males	Females	Total	Males	Females	Total	Males	Females
<u>AGE-ADJUSTED RATES</u>									
YEAR OF DEATH:									
1975	2.1	2.6	1.6	2.3	2.9	1.7	0.5	0.6	0.4
1976	2.2	2.9	1.8	2.5	3.1	1.9	0.5	0.7	0.4
1977	2.3	2.9	1.8	2.5	3.2	1.9	0.5	0.7	0.4
1978	2.3	3.0	1.7	2.5	3.3	1.9	0.5	0.6	0.5
1979	2.4	3.2	1.8	2.7	3.5	2.0	0.5	0.6	0.5
1980	2.3	3.1	1.7	2.6	3.4	1.9	0.5	0.5	0.6
1981	2.4	3.1	1.9	2.7	3.4	2.1	0.6	0.6	0.6
1982	2.5	3.3	1.8	2.7	3.6	2.0	0.5	0.6	0.5
1983	2.5	3.3	1.8	2.7	3.6	2.0	0.5	0.6	0.4
1984	2.5	3.4	1.8	2.8	3.8	2.0	0.5	0.5	0.5
1985	2.6	3.5	1.9	2.8	3.8	2.1	0.5	0.6	0.5
1986	2.6	3.5	1.9	2.9	3.9	2.1	0.5	0.7	0.3
1987	2.6	3.7	1.8	2.9	4.1	2.0	0.6	0.6	0.5
1988	2.6	3.7	1.9	3.0	4.1	2.1	0.5	0.5	0.4
1989	2.7	3.7	1.9	3.0	4.2	2.1	0.6	0.6	0.5
1990	2.8	3.8	2.0	3.1	4.2	2.2	0.5	0.6	0.4
1991	2.7	3.9	1.8	3.0	4.3	2.0	0.6	0.6	0.5
1992	2.7	3.8	1.8	3.0	4.3	2.1	0.5	0.6	0.4
1993	2.7	3.9	1.9	3.0	4.3	2.1	0.5	0.4	0.6
1994	2.7	3.8	1.8	3.0	4.3	2.0	0.4	0.4	0.4
1995	2.7	3.9	1.8	3.0	4.3	2.0	0.5	0.5	0.4
1996	2.8	4.0	1.9	3.1	4.5	2.1	0.4	0.5	0.4
1997	2.7	3.9	1.8	3.1	4.4	2.1	0.6	0.5	0.6
1998	2.8	4.1	1.8	3.1	4.6	2.0	0.5	0.5	0.5
1999	2.6	3.8	1.7	3.0	4.3	2.0	0.4	0.5	0.3
2000	2.7	3.8	1.8	3.0	4.3	2.0	0.5	0.6	0.5
2001	2.7	3.9	1.7	3.0	4.4	2.0	0.4	0.3	0.4
2002	2.6	3.8	1.7	2.9	4.2	2.0	0.4	0.5	0.3
<u>AGE-ADJUSTED RATES, 1998-2002</u>									
AGE AT DEATH:									
All ages	2.7	3.9	1.8	3.0	4.3	2.0	0.4	0.5	0.4
Under 65	1.4	1.8	0.9	1.6	2.1	1.1	0.2	0.2	0.1
65 and over	11.7	18.3	7.4	12.8	20.0	8.1	2.5	2.6	2.4
All ages(IARC world std) <sup>b</sup>	1.7	2.5	1.2	2.0	2.8	1.3	0.3	0.3	0.2
<u>AGE-SPECIFIC RATES, 1998-2002</u>									
AGE AT DEATH:									
<1	-	-	-	-	-	-	-	-	-
1-4	-	-	-	-	-	-	-	-	-
5-9	-	-	-	-	-	-	-	-	-
10-14	-	-	-	-	-	-	-	-	-
15-19	0.0	0.1	-	0.1	0.1	-	-	-	-
20-24	0.2	0.2	0.2	0.2	0.2	0.2	-	-	-
25-29	0.3	0.4	0.3	0.4	0.5	0.4	-	-	-
30-34	0.6	0.8	0.5	0.8	0.9	0.7	-	-	-
35-39	1.1	1.2	0.9	1.3	1.5	1.1	-	-	-
40-44	1.7	2.2	1.3	2.1	2.6	1.5	-	-	-
45-49	2.6	3.3	1.8	3.0	3.9	2.1	0.2	-	-
50-54	3.6	4.7	2.5	4.2	5.5	2.9	0.3	-	-
55-59	4.6	6.4	2.9	5.3	7.3	3.3	0.6	0.8	-
60-64	6.2	8.7	3.9	7.0	9.9	4.4	0.9	-	0.9
65-69	8.1	11.9	4.8	9.1	13.3	5.4	1.3	1.5	1.2
70-74	10.2	15.3	6.2	11.3	16.8	6.8	2.2	2.4	2.0
75-79	12.5	19.4	7.7	13.7	21.2	8.4	2.1	-	2.0
80-84	14.8	24.1	9.3	16.0	26.1	10.0	4.0	4.2	3.9
85+	17.8	29.8	12.8	19.2	32.5	13.7	4.9	-	5.1

<sup>a</sup> NCHS public use data file for the total US. Rates are per 100,000 and are age-adjusted to the 2000 US Std Population (19 age groups - Census P25-1130), unless noted.

<sup>b</sup> NCHS public use data file for the total US. Rates are per 100,000 and are age-adjusted to the IARC world standard population.

- Statistic not shown. Rate based on less than 25 cases for the time interval.

Table XVI-4  
MELANOMA OF THE SKIN (Invasive)

## SURVIVAL RATES, BY RACE, SEX, DIAGNOSIS YEAR, STAGE AND AGE

	All Races			Whites			Blacks		
	Total	Males	Females	Total	Males	Females	Total	Males	Females
<u>5-YR RELATIVE SURVIVAL RATES</u>									
YEAR OF DIAGNOSIS:									
1960-1963 <sup>a</sup>	-	-	-	60	51	68	-	-	-
1970-1973 <sup>a</sup>	-	-	-	68	62	75	-	-	-
1974-1976 <sup>b</sup>	80.2	75.1	85.1	80.5	75.6	85.1	66.5 <sup>e</sup>	-	-
1977-1979 <sup>b</sup>	82.3	77.9	86.4	82.6	78.2	86.7	49.9 <sup>f</sup>	-	-
1980-1982 <sup>b</sup>	83.0	77.8	88.2	83.2	78.1	88.3	56.4 <sup>f</sup>	-	-
1983-1985 <sup>b</sup>	84.9	80.5	89.5	85.0	80.6	89.6	74.1 <sup>f</sup>	-	69.8 <sup>f</sup>
1986-1988 <sup>b</sup>	88.0	84.8	91.4	88.2	85.0	91.5	66.9 <sup>e</sup>	-	-
1989-1991 <sup>b</sup>	88.9	86.4	91.8	89.1	86.7	91.8	77.6 <sup>e</sup>	60.8 <sup>f</sup>	93.7 <sup>f</sup>
1992-1994 <sup>b</sup>	89.2	87.2	91.6	89.4	87.4	91.8	59.4 <sup>f</sup>	-	-
1995-2001 <sup>b</sup>	91.6 <sup>d</sup>	90.2 <sup>d</sup>	93.3 <sup>d</sup>	91.8 <sup>d</sup>	90.3 <sup>d</sup>	93.5 <sup>d</sup>	77.5 <sup>e</sup>	75.7 <sup>e</sup>	78.2 <sup>e</sup>
1995-2001 <sup>b</sup>									
All Stages	91.6	90.2	93.3	91.8	90.3	93.5	77.5 <sup>e</sup>	75.7 <sup>e</sup>	78.2 <sup>e</sup>
Localized	98.3	98.6	98.0	98.4	98.6	98.1	92.6 <sup>e</sup>	92.2 <sup>e</sup>	92.5 <sup>e</sup>
Regional	63.8	60.3	68.9	64.1	60.3	69.7	36.9 <sup>f</sup>	-	-
Distant	16.0	14.7	18.0	15.6	14.8	17.0	-	-	-
Unstaged	80.9	78.5	83.5	81.0	78.6	83.7	-	-	-
<u>5-YR PERIOD SURVIVAL RATES<sup>bc</sup></u>									
YEAR OF DIAGNOSIS:									
1995-2001	92.0	90.7	93.5	92.2	90.8	93.8	77.9	70.6	83.5
<u>STAGE DISTRIBUTION (%) 1995-2001<sup>b</sup></u>									
All Stages									
Number of cases	25,323	13,801	11,522	24,924	13,597	11,327	137	75	62
Percent	100%	100%	100%	100%	100%	100%	100%	100%	100%
Localized	83	80	85	83	81	86	64	60	68
Regional	11	12	9	11	12	9	20	21	19
Distant	3	4	2	3	4	2	12	13	10
Unstaged	3	4	3	3	4	3	4	5	3
<u>5-YR RELATIVE SURVIVAL RATES, 1995-2001<sup>b</sup></u>									
AGE AT DIAGNOSIS:									
<45	93.4	89.7	96.2	93.5	89.8	96.3	81.2 <sup>e</sup>	-	-
45-54	91.6	88.9	95.1	91.6	88.9	95.2	-	-	-
55-64	91.5	90.1	93.8	91.6	90.2	93.9	82.8 <sup>e</sup>	-	-
65-74	91.6	92.4	90.3	92.0	92.6	91.1	-	-	-
75+	86.2	87.9	81.8	86.7	88.3	82.3	32.9 <sup>f</sup>	-	-
Under 65	92.4	89.5	95.5	92.5	89.6	95.6	85.2	85.3 <sup>e</sup>	84.9 <sup>e</sup>
65 and over	89.7	91.1	86.8	90.2	91.5	87.5	55.4 <sup>f</sup>	55.1 <sup>f</sup>	-

<sup>a</sup> Rates are based on End Results data from a series of hospital registries and one population-based registry.

<sup>b</sup> Rates are from the SEER 9 areas (San Francisco, Connecticut, Detroit, Hawaii, Iowa, New Mexico, Seattle, Utah, Atlanta). Rates are based on follow-up of patients into 2002.

<sup>c</sup> Period survival provides a more up-to-date estimate of survival by piecing together the most recent conditional survival estimates from several cohorts. It is computed here using three calendar year blocks (1999-2001: 0-1 year survival), (1998-2000: 1-2 year survival), (1997-1999: 2-3 year survival), (1996-1998: 3-4 year survival), (1995-1997: 4-5 years survival).

<sup>d</sup> The difference in rates between 1974-1976 and 1995-2001 is statistically significant (p<.05).

<sup>e</sup> The standard error of the survival rate is between 5 and 10 percentage points.

<sup>f</sup> The standard error of the survival rate is greater than 10 percentage points.

- Statistic could not be calculated.

Table XVI-5  
MELANOMA OF THE SKIN (Invasive)

SURVIVAL RATES<sup>a</sup>

By Year of Diagnosis

All Races, Males and Females

Year of Diagnosis

	1975- 1979	1980- 1984	1985	1986	1987	1988	1989	1990	1991	1992	1993	1994	1995	1996	1997	1998	1999	2000	2001
Relative Survival Rates (SEER <sup>b</sup> )																			
1-year	94.5	95.9	95.8	96.8	96.3	97.0	96.0	96.5	97.1	96.2	96.8	97.1	97.5	97.7	96.8	96.8	97.8	97.9	97.6
2-year	89.9	91.8	92.6	93.1	92.9	93.4	93.5	93.6	94.1	93.7	94.4	93.8	94.3	95.8	94.5	94.7	95.8	96.2	
3-year	86.1	88.1	89.3	90.8	90.3	91.1	90.9	91.7	91.9	91.6	92.5	91.6	92.7	94.0	92.5	92.9	94.2		
4-year	83.4	85.6	87.2	89.4	88.7	89.8	89.2	89.8	90.6	89.7	90.8	89.8	91.4	93.2	91.7	91.8			
5-year	82.1	83.6	85.5	87.8	87.3	88.9	87.7	89.2	89.7	88.7	90.2	88.8	90.2	92.4	90.4				
6-year	80.4	82.5	84.4	86.7	86.3	87.3	86.9	88.2	88.6	88.4	89.7	88.0	90.2	91.5					
7-year	79.2	81.8	83.3	86.3	85.4	86.8	85.8	87.8	88.0	88.1	88.6	87.6	90.2						
8-year	78.3	81.2	83.1	85.4	84.7	86.2	85.4	87.2	87.4	87.7	88.3	86.7							
9-year	77.6	80.5	82.6	85.4	84.3	85.9	85.3	87.1	87.2	87.4	88.1								
11-year	77.0	80.1	82.6	85.4	84.2	85.4	85.1	87.0	87.2	87.1									
11-year	76.5	79.8	82.6	85.4	83.2	85.0	84.7	86.8	87.0										
12-year	75.9	79.6	82.6	85.4	82.9	85.0	84.4	86.8											
13-year	75.6	79.4	82.6	85.4	82.9	84.9	84.2												
14-year	75.4	79.3	82.6	85.1	82.9	84.7													
15-year	75.1	79.2	82.6	85.1	82.9														
16-year	74.8	79.2	82.6	84.9															
17-year	74.7	78.9	82.2																
18-year	74.6	78.9																	
19-year	74.6																		
20-year	74.6																		

<sup>a</sup> Survival rates are relative rates expressed as percents.  
<sup>b</sup> Rates are from the SEER 9 areas.

Table XVI-6  
MELANOMA OF THE SKIN (Invasive)

SURVIVAL RATES<sup>a</sup>

By Year of Diagnosis

All Races, Males

Year of Diagnosis

	1975- 1979	1980- 1984	1985	1986	1987	1988	1989	1990	1991	1992	1993	1994	1995	1996	1997	1998	1999	2000	2001
Relative Survival Rates (SEER <sup>b</sup> )																			
1-year	92.7	94.4	94.7	95.7	95.3	95.7	94.8	95.7	96.1	95.9	96.2	96.8	96.6	96.8	96.4	96.5	97.5	97.6	97.0
2-year	86.6	88.9	90.3	91.0	90.8	91.8	92.2	91.8	93.0	92.7	93.4	92.4	92.3	94.6	93.8	94.2	94.6	95.8	
3-year	82.3	84.4	86.1	88.1	87.9	88.9	88.8	89.5	90.6	90.2	90.7	89.6	90.1	92.5	91.2	92.4	92.6		
4-year	78.9	81.4	83.6	86.2	85.8	87.6	86.5	87.2	89.3	87.4	89.2	87.8	88.4	91.7	90.4	91.0			
5-year	77.5	78.7	81.5	84.1	83.5	86.7	84.5	86.1	88.2	86.2	88.6	86.9	87.1	90.9	88.9				
6-year	75.4	77.6	80.4	82.2	82.7	84.8	83.5	84.9	87.2	85.6	87.7	86.3	87.0	90.0					
7-year	73.8	77.0	79.4	81.5	81.3	83.9	82.1	84.8	86.5	85.4	85.9	85.5	87.0						
8-year	72.7	76.3	79.1	80.7	80.6	83.4	81.4	84.5	85.8	85.3	85.5	83.9							
9-year	71.9	75.4	78.6	80.7	80.6	82.7	81.1	84.5	85.2	84.6	85.3								
10-year	71.3	75.1	78.6	80.7	80.2	82.2	81.1	84.5	85.2	84.6									
11-year	70.3	74.8	78.6	80.7	79.2	82.2	81.0	84.4	85.2										
12-year	69.7	74.7	78.6	80.7	78.9	82.2	80.9	84.4											
13-year	69.3	74.5	78.6	80.7	78.9	82.2	80.7												
14-year	69.3	74.2	78.6	79.6	78.9	82.1													
15-year	68.9	74.2	78.6	79.6	78.9														
16-year	68.5	74.2	78.6	79.6															
17-year	68.5	74.2	77.5																
18-year	68.5	74.2																	
19-year	68.5																		
20-year	68.5																		

<sup>a</sup> Survival rates are relative rates expressed as percents.  
<sup>b</sup> Rates are from the SEER 9 areas.

Table XVI-7  
MELANOMA OF THE SKIN (Invasive)

SURVIVAL RATES<sup>a</sup>

By Year of Diagnosis

All Races, Females

Year of Diagnosis

	1975- 1979	1980- 1984	1985	1986	1987	1988	1989	1990	1991	1992	1993	1994	1995	1996	1997	1998	1999	2000	2001
Relative Survival Rates (SEER <sup>b</sup> )																			
1-year	96.2	97.5	97.1	98.0	97.2	98.2	97.5	97.5	98.3	96.7	97.6	97.4	98.5	98.7	97.2	97.2	98.2	98.3	98.4
2-year	93.0	94.8	95.1	95.3	95.3	95.1	95.0	95.8	95.3	94.9	95.5	95.6	96.7	97.2	95.4	95.3	97.0	96.7	
3-year	89.9	91.9	92.7	93.9	93.0	93.4	93.2	94.1	93.3	93.2	94.5	94.1	95.6	95.8	93.9	93.5	95.9		
4-year	87.8	89.8	91.2	92.8	91.8	92.1	92.3	92.7	92.1	92.1	92.5	92.4	94.7	95.0	92.9	92.6			
5-year	86.5	88.7	89.6	91.9	91.2	91.2	91.2	92.5	91.3	91.5	92.1	91.2	93.8	94.2	92.1				
6-year	85.1	87.5	88.6	91.4	89.9	89.8	90.6	91.9	90.3	91.5	91.9	90.1	93.7	93.3					
7-year	84.3	86.6	87.5	91.3	89.5	89.6	89.8	91.1	89.7	91.0	91.8	90.0	93.5						
8-year	83.5	86.0	87.2	90.3	88.4	88.8	89.6	90.1	89.2	90.2	91.3	90.0							
9-year	82.9	85.5	86.8	90.3	88.1	88.8	89.6	89.9	89.0	90.2	91.0								
11-year	82.4	84.9	86.8	90.3	88.1	88.6	89.0	89.4	89.0	89.8									
10-year	82.1	84.6	86.8	89.9	87.2	87.7	88.4	89.1	87.9										
12-year	81.5	84.4	86.8	89.9	86.7	87.0	88.0	88.9											
13-year	81.4	84.0	86.8	89.9	86.3	86.9	87.1												
14-year	80.8	83.9	86.8	89.9	86.3	86.9													
15-year	80.5	83.5	86.8	89.9	86.3														
16-year	80.2	83.2	86.8	89.9															
17-year	80.1	83.0	86.8																
18-year	79.9	82.7																	
19-year	79.9																		
20-year	79.7																		

<sup>a</sup> Survival rates are relative rates expressed as percents.  
<sup>b</sup> Rates are from the SEER 9 areas.

Table XVI-8  
MELANOMA OF SKIN (Invasive)

Percent Diagnosed With Cancer In 10, 20 and 30 Years and In Remaining Lifetime,  
 Given Cancer Free At Current Age By Race and Sex

Lifetime Risk (Percent) of Being Diagnosed (13 SEER Areas) With Cancer and  
 Lifetime Risk (Percent) of Dying (Total U.S.) From Cancer

2000-2002

All Races

Current Age	Males				Females			
	+10 yrs	+20 yrs	+30 yrs	Eventually	+10 yrs	+20 yrs	+30 yrs	Eventually
0	0.00	0.01	0.04	1.94	0.00	0.01	0.08	1.30
10	0.01	0.04	0.13	1.96	0.01	0.08	0.21	1.31
20	0.03	0.12	0.30	1.97	0.07	0.20	0.38	1.30
30	0.09	0.27	0.59	1.96	0.13	0.31	0.53	1.24
40	0.19	0.51	0.97	1.90	0.18	0.40	0.65	1.12
50	0.34	0.81	1.36	1.78	0.22	0.47	0.73	0.95
60	0.51	1.10	1.48	1.56	0.26	0.53	0.72	0.76

Lifetime Risk of Being Diagnosed = 1.94%  
 Lifetime Risk of Dying = 0.35%

Lifetime Risk of Being Diagnosed = 1.30%  
 Lifetime Risk of Dying = 0.20%

Whites

Current Age	Males				Females			
	+10 yrs	+20 yrs	+30 yrs	Eventually	+10 yrs	+20 yrs	+30 yrs	Eventually
0	0.00	0.01	0.05	2.33	0.00	0.02	0.11	1.59
10	0.01	0.05	0.15	2.35	0.02	0.11	0.27	1.60
20	0.04	0.15	0.37	2.36	0.09	0.26	0.48	1.59
30	0.11	0.33	0.72	2.34	0.17	0.39	0.66	1.51
40	0.23	0.62	1.17	2.27	0.23	0.50	0.81	1.35
50	0.41	0.98	1.63	2.11	0.28	0.59	0.90	1.15
60	0.62	1.32	1.75	1.83	0.32	0.65	0.86	0.91

Lifetime Risk of Being Diagnosed = 2.33%  
 Lifetime Risk of Dying = 0.40%

Lifetime Risk of Being Diagnosed = 1.59%  
 Lifetime Risk of Dying = 0.22%

Blacks

Current Age	Males				Females			
	+10 yrs	+20 yrs	+30 yrs	Eventually	+10 yrs	+20 yrs	+30 yrs	Eventually
0	0.00	0.00	0.00	0.08	0.00	0.00	0.00	0.06
10	0.00	0.00	0.01	0.09	0.00	0.00	0.01	0.06
20	0.00	0.01	0.01	0.09	0.00	0.01	0.01	0.06
30	0.01	0.01	0.02	0.09	0.01	0.01	0.02	0.05
40	0.00	0.02	0.05	0.09	0.01	0.01	0.02	0.05
50	0.01	0.05	0.07	0.09	0.01	0.02	0.03	0.05
60	0.04	0.07	0.08	0.08	0.01	0.03	0.04	0.04

Lifetime Risk of Being Diagnosed = 0.08%  
 Lifetime Risk of Dying = 0.03%

Lifetime Risk of Being Diagnosed = 0.06%  
 Lifetime Risk of Dying = 0.04%

Devcan Version 6.0, April 2005, National Cancer Institute (<http://srab.cancer.gov/devcan/>).

Source: Incidence data are from the SEER 13 areas (San Francisco, Connecticut, Detroit, Hawaii, Iowa, New Mexico, Seattle, Utah, Atlanta, San Jose-Monterey, Los Angeles, Alaska Native Registry, Rural Georgia). Mortality data are from the NCHS public use data file for the total US.



Table XVI-9  
MELANOMA OF THE SKIN (Invasive)

SEER INCIDENCE AND U.S. MORTALITY  
AGE-ADJUSTED RATES AND TRENDS<sup>a</sup>  
 By Race/Ethnicity and Sex

Incidence<sup>b</sup>

RACE/ETHNICITY	Rate 1998-2002			Trend 1992-2002		
	Rate per 100,000 persons			APC (%)		
	Total	Males	Females	Total	Males	Females
All Races	17.2	21.8	14.0	2.4 <sup>e</sup>	2.5 <sup>e</sup>	2.3 <sup>e</sup>
White	20.8	25.9	17.2	2.9 <sup>e</sup>	2.9 <sup>e</sup>	3.0 <sup>e</sup>
White Hispanic <sup>c</sup>	4.4	4.6	4.5	2.7 <sup>e</sup>	3.2 <sup>e</sup>	2.5
White Non-Hispanic <sup>c</sup>	23.7	29.1	19.9	3.0 <sup>e</sup>	2.9 <sup>e</sup>	3.1 <sup>e</sup>
Black	1.0	1.3	0.8	-0.7	-	-
Asian/Pacific Islander	1.6	1.8	1.6	3.6	2.9	4.4
Amer Ind/Alaska Nat	1.6	-	-	-	-	-
Hispanic <sup>c</sup>	4.3	4.5	4.4	2.9 <sup>e</sup>	3.2 <sup>e</sup>	2.8

Mortality<sup>d</sup>

RACE/ETHNICITY	Rate 1998-2002			Trend 1992-2002		
	Rate per 100,000 persons			APC (%)		
	Total	Males	Females	Total	Males	Females
All Races	2.7	3.9	1.8	-0.3	-0.1	-0.7 <sup>e</sup>
White	3.0	4.3	2.0	-0.2	0.0	-0.5 <sup>e</sup>
White Hispanic <sup>c</sup>	0.9	1.1	0.7	-0.2	-0.5	-0.7
White Non-Hispanic <sup>c</sup>	3.2	4.7	2.1	0.0	0.1	-0.3
Black	0.4	0.5	0.4	-1.5	-0.5	-2.0
Asian/Pacific Islander	0.4	0.5	0.3	-1.8	-	-
Amer Ind/Alaska Nat	0.7	0.9	-	-	-	-
Hispanic <sup>c</sup>	0.8	1.0	0.6	-0.2	-0.6	-0.6

- The APC is the Annual Percent Change over the time interval.  
 - Statistic not shown. Rate based on less than 25 cases for the time interval. Trend based on less than 10 cases for at least one year within the time interval.  
<sup>a</sup> Rates are age-adjusted to the 2000 US Std Population (19 age groups - Census P25-1130). Trends are based on rates age-adjusted to the 2000 US Std Population (19 age groups - Census P25-1130).  
<sup>b</sup> Incidence data are from the 13 SEER areas (San Francisco, Connecticut, Detroit, Hawaii, Iowa, New Mexico, Seattle, Utah, Atlanta, San Jose-Monterey, Los Angeles, Alaska Native Registry and Rural Georgia).  
<sup>c</sup> Hispanic and Non-Hispanic are not mutually exclusive from Whites, Blacks, Asian Pacific Islanders, and American Indians/Alaska Natives. Incidence data for Hispanics and Non-Hispanics do not include cases from Detroit, Hawaii, Alaska Native Registry and Rural Georgia. For mortality, information is included for all states except Connecticut, Maine, Maryland, Minnesota, New Hampshire, New York, North Dakota, Oklahoma and Vermont.  
<sup>d</sup> Mortality data are analyzed from a public use file provided by the National Center for Health Statistics (NCHS).  
<sup>e</sup> The APC is significantly different from zero (p<.05).

Table XVI-10  
MELANOMA OF THE SKIN (Invasive)

AGE-ADJUSTED SEER INCIDENCE RATES AND SEER DEATH RATES<sup>a</sup>  
 By Registry, Race and Sex

	All Races			Whites			Blacks		
	Total	Males	Females	Total	Males	Females	Total	Males	Females
<u>SEER INCIDENCE RATES<sup>b</sup>, 1998-2002</u>									
REGISTRY									
13 SEER Areas	17.2	21.8	14.0	20.8	25.9	17.2	1.0	1.3	0.8
11 SEER Areas	17.3	21.9	14.1	20.8	26.0	17.2	1.0	1.3	0.8
9 SEER Areas	18.4	22.9	15.2	22.0	27.0	18.6	1.0	1.4	0.8
San Francisco-Oakland	15.1	19.7	11.8	20.2	25.9	16.2	-	-	-
Connecticut	22.0	27.4	18.2	23.3	28.8	19.4	-	-	-
Metropolitan Detroit	16.7	21.2	13.7	21.5	26.7	18.3	0.9	-	-
Hawaii	16.2	21.5	11.7	51.5	67.1	37.2	-	-	-
Iowa	17.6	19.8	16.2	17.0	19.2	15.7	-	-	-
New Mexico	16.4	21.0	12.8	18.0	22.8	14.2	-	-	-
Seattle-Puget Sound	21.5	25.3	19.0	24.2	28.1	21.6	-	-	-
Utah	20.9	25.5	17.5	21.7	26.4	18.2	-	-	-
Metropolitan Atlanta	19.2	26.9	14.2	27.2	36.2	21.4	1.1	-	-
San Jose-Monterey	16.4	20.4	13.3	18.9	23.7	15.2	-	-	-
Los Angeles	14.2	19.0	10.9	17.5	23.2	13.6	1.1	1.3	-
<u>SEER DEATH RATES<sup>c</sup>, 1998-2002</u>									
REGISTRY									
13 SEER Areas	2.3	3.3	1.5	2.8	4.0	1.9	0.4	-	0.4
11 SEER Areas	2.3	3.3	1.5	2.8	4.0	1.9	0.3	-	0.3
9 SEER Areas	2.4	3.5	1.6	2.9	4.1	1.9	0.4	-	0.4
San Francisco-Oakland	2.4	3.4	1.6	3.2	4.5	2.2	-	-	-
Connecticut	2.6	3.6	1.8	2.8	3.9	1.9	-	-	-
Metropolitan Detroit	1.9	2.8	1.3	2.4	3.5	1.6	-	-	-
Hawaii	1.4	1.9	0.9	3.9	5.2	-	-	-	-
Iowa	2.4	3.5	1.6	2.5	3.6	1.7	-	-	-
New Mexico	2.4	3.4	1.6	2.6	3.6	1.7	-	-	-
Seattle-Puget Sound	2.9	4.0	2.0	3.2	4.4	2.2	-	-	-
Utah	3.2	4.4	2.2	3.3	4.6	2.3	-	-	-
Metropolitan Atlanta	2.4	3.8	1.5	3.3	5.1	2.0	-	-	-
San Jose-Monterey	2.3	3.1	1.7	2.8	3.9	2.0	-	-	-
Los Angeles	1.9	2.9	1.3	2.5	3.6	1.6	-	-	-

<sup>a</sup> Incidence and death rates are per 100,000 and are age-adjusted to the 2000 US Std Population (19 age groups - Census P25-1130).

<sup>b</sup> The SEER 9 areas are San Francisco, Connecticut, Detroit, Hawaii, Iowa, New Mexico, Seattle, Utah, and Atlanta. The SEER 11 areas comprise the SEER 9 areas plus San Jose-Monterey and Los Angeles. The SEER 13 areas comprise the SEER 11 areas plus the Alaska Native Registry and Rural Georgia.

<sup>c</sup> NCHS public use data file for the total US with analyses limited to the SEER geographic areas.

- Statistic could not be calculated or populations are inadequate.

Table XVI-11  
MELANOMA OF THE SKIN (Invasive)

AVERAGE ANNUAL AGE-ADJUSTED CANCER DEATH<sup>a</sup> RATES BY STATE, ALL RACES, 1998-2002

Males and Females

State	Rate	SE	Rank	PD
TOTAL U.S.	2.7	0.01		
High Five States				
Oklahoma	3.6 <sup>bc</sup>	0.14	(01)	33.3
Delaware	3.3 <sup>b</sup>	0.29	(02)	22.2
Utah	3.2 <sup>b</sup>	0.20	(03)	18.5
Vermont	3.2 <sup>b</sup>	0.32	(04)	18.5
Oregon	3.2 <sup>bc</sup>	0.13	(05)	18.5
Low Five States				
Louisiana	2.3 <sup>c</sup>	0.10	(47)	-14.8
Alaska	1.8 <sup>b</sup>	0.31	(48)	-33.3
North Dakota	1.8 <sup>bc</sup>	0.23	(49)	-33.3
District of Columbia	1.5 <sup>bc</sup>	0.23	(50)	-44.4
Hawaii	1.4 <sup>bc</sup>	0.15	(51)	-48.1

Males

State	Rate	SE	Rank	PD
TOTAL U.S.	3.9	0.03		
High Five States				
Oklahoma	5.2 <sup>bc</sup>	0.26	(01)	33.3
Vermont	5.1 <sup>b</sup>	0.61	(02)	30.8
Delaware	5.1 <sup>b</sup>	0.56	(03)	30.8
Idaho	4.7 <sup>b</sup>	0.42	(04)	20.5
Kentucky	4.7 <sup>b</sup>	0.24	(05)	20.5
Low Five States				
Louisiana	3.2 <sup>b</sup>	0.19	(47)	-17.9
District of Columbia	2.5 <sup>b</sup>	0.48	(48)	-35.9
North Dakota	2.2 <sup>bc</sup>	0.38	(49)	-43.6
Alaska	2.1 <sup>b</sup>	0.49	(50)	-46.2
Hawaii	1.9 <sup>bc</sup>	0.26	(51)	-51.3

Females

State	Rate	SE	Rank	PD
TOTAL U.S.	1.8	0.02		
High Five States				
Rhode Island	2.4 <sup>b</sup>	0.27	(01)	33.3
Oklahoma	2.3 <sup>b</sup>	0.15	(02)	27.8
Utah	2.2 <sup>b</sup>	0.23	(03)	22.2
New Hampshire	2.1 <sup>b</sup>	0.25	(04)	16.7
Maine	2.1 <sup>b</sup>	0.23	(05)	16.7
Low Five States				
Mississippi	1.5 <sup>b</sup>	0.14	(47)	-16.7
Alaska	1.5 <sup>b</sup>	0.38	(48)	-16.7
North Dakota	1.4 <sup>b</sup>	0.28	(49)	-22.2
Hawaii	0.9 <sup>bc</sup>	0.17	(50)	-50.0
District of Columbia	0.8 <sup>bc</sup>	0.21	(51)	-55.6

For additional detailed cancer statistics by state, please visit the State Cancer Profiles website. <http://statecancerprofiles.cancer.gov/>

- <sup>a</sup> NCHS public use data file. Rates are per 100,000 and are age-adjusted to the 2000 US Std Population (19 age groups - Census P25-1130).
- <sup>b</sup> Absolute percent difference between state rate and total U.S. rate is 15% or more.
- <sup>c</sup> Difference between state rate and total U.S. rate is statistically significant (p<=.0002).
- SE Standard error of the rate.
- PD Percent difference between state rate and total U.S. rate.

Table XVI-12  
MELANOMA OF THE SKIN (Invasive)

Estimated United States Cancer Prevalence Counts<sup>a</sup> on January 1, 2002  
 By Race/Ethnicity, Sex and Years Since Diagnosis

Years Since Diagnosis	0 to <5	5 to <10	10 to <15	15 to <20	20 to <25	0 to <12 <sup>e</sup>	0 to <27 <sup>e</sup>	>=27 <sup>g</sup>	Complete <sup>h</sup>
<u>Race/Sex</u>									
All Races <sup>b</sup>	202,999	140,468	102,284	72,580	47,934	388,400	578,663	51,159	629,822
Males	107,851	71,956	49,016	32,680	19,675	202,121	286,244	17,853	304,097
Females	95,148	68,512	53,268	39,900	28,259	186,279	292,419	33,306	325,725
White <sup>b</sup>	195,440	134,001	97,729	68,677	46,323	372,536	553,759	48,322	602,081
Males	103,825	68,668	47,201	30,945	18,921	194,063	274,314	16,994	291,308
Females	91,615	65,333	50,528	37,732	27,402	178,473	279,445	31,328	310,773
Black <sup>b</sup>	821	518	446	223	37	1,523	2,154	149	2,303
Males	387	279	188	49	11	759	937	61	998
Females	434	239	258	174	26	764	1,217	88	1,305
Asian/Pacific Islander <sup>c</sup>	578	297	+	+	+	937	+	+	+
Males	261	150	+	+	+	425	+	+	+
Females	317	147	+	+	+	512	+	+	+
Hispanic <sup>d</sup>	3,296	1,906	+	+	+	5,862	+	+	+
Males	1,310	705	+	+	+	2,277	+	+	+
Females	1,986	1,201	+	+	+	3,585	+	+	+

Estimated prevalence percent<sup>a</sup> on January 1, 2002, of the SEER 11 population diagnosed in the previous 10 years  
 By Age at Prevalence, Race/Ethnicity and Sex

Age at Prevalence	Age Specific (Crude)										Age-Adjusted <sup>f</sup>
	All Ages	0-9	10-19	20-29	30-39	40-49	50-59	60-69	70-79	80+	All Ages
<u>Race/Sex</u>											
All Races <sup>c</sup>	0.1013%	0.0003%	0.0023%	0.0237%	0.0688%	0.1337%	0.2001%	0.2640%	0.3297%	0.3086%	0.1058%
Males	0.1080%	0.0003%	0.0019%	0.0161%	0.0500%	0.1253%	0.2258%	0.3470%	0.4650%	0.4857%	0.1236%
Females	0.0947%	0.0003%	0.0027%	0.0317%	0.0881%	0.1419%	0.1757%	0.1901%	0.2278%	0.2132%	0.0937%
White <sup>c</sup>	0.1249%	0.0003%	0.0028%	0.0290%	0.0848%	0.1632%	0.2398%	0.3168%	0.3851%	0.3473%	0.1264%
Males	0.1322%	0.0004%	0.0022%	0.0190%	0.0599%	0.1506%	0.2668%	0.4115%	0.5397%	0.5558%	0.1454%
Females	0.1176%	0.0003%	0.0034%	0.0399%	0.1114%	0.1761%	0.2135%	0.2305%	0.2670%	0.2366%	0.1140%
Black <sup>c</sup>	0.0037%	-	-	0.0011%	0.0025%	0.0035%	0.0079%	0.0173%	0.0169%	0.0168%	0.0049%
Males	0.0039%	-	-	-	0.0014%	0.0042%	0.0082%	0.0249%	0.0221%	0.0198%	0.0059%
Females	0.0035%	-	-	-	0.0035%	0.0028%	0.0076%	0.0113%	0.0135%	0.0154%	0.0042%
Asian/Pacific Islander <sup>c</sup>	0.0078%	-	-	0.0024%	0.0056%	0.0075%	0.0151%	0.0204%	0.0282%	0.0321%	0.0084%
Males	0.0077%	-	-	0.0029%	0.0029%	0.0060%	0.0145%	0.0246%	0.0423%	0.0389%	0.0091%
Females	0.0078%	-	-	0.0020%	0.0082%	0.0089%	0.0157%	0.0169%	0.0177%	0.0274%	0.0079%
Hispanic <sup>d</sup>	0.0137%	-	-	0.0031%	0.0125%	0.0260%	0.0452%	0.0509%	0.0872%	0.0958%	0.0236%
Males	0.0101%	-	-	0.0019%	0.0050%	0.0181%	0.0358%	0.0520%	0.1085%	0.1234%	0.0222%
Females	0.0175%	-	-	0.0045%	0.0211%	0.0340%	0.0539%	0.0501%	0.0720%	0.0806%	0.0258%

<sup>a</sup> US 2002 cancer prevalence counts are based on 2002 cancer prevalence proportions from the SEER registries and 1/1/2002 US population estimates based on the average of 2001 and 2002 population estimates from the US Bureau of the Census. Prevalence was calculated using the First Malignant Primary Only for a person.

<sup>b c d</sup> Statistics based on b) SEER 9 Areas c) SEER 11 Areas and Rural Georgia d) SEER 11 Areas excluding Hawaii and Detroit.

<sup>e</sup> Maximum limited-duration prevalence: 27 years for 1975-2002 SEER 9 data; 12 years for 1990-2002 SEER 11 data (used to calculate prevalence for Hispanics and Asian Pacific Islanders).

<sup>f</sup> Percentages are age-adjusted to the 2000 US standard population by 5-year age groups.

<sup>g h</sup> (g) Cases diagnosed more than 27 years ago were estimated using the completeness index method (Capocaccia et. al. 1997, Merrill et. al. 2000). (h) Complete prevalence is obtained by summing 0 to <27 and >=27.

- Statistic not shown. Statistic based on fewer than 5 cases estimated alive in SEER for the time interval.

+ Not available.

# SEER Incidence, Delay Adjusted Incidence and US Death Rates+ Melanoma of the Skin, White, by Sex

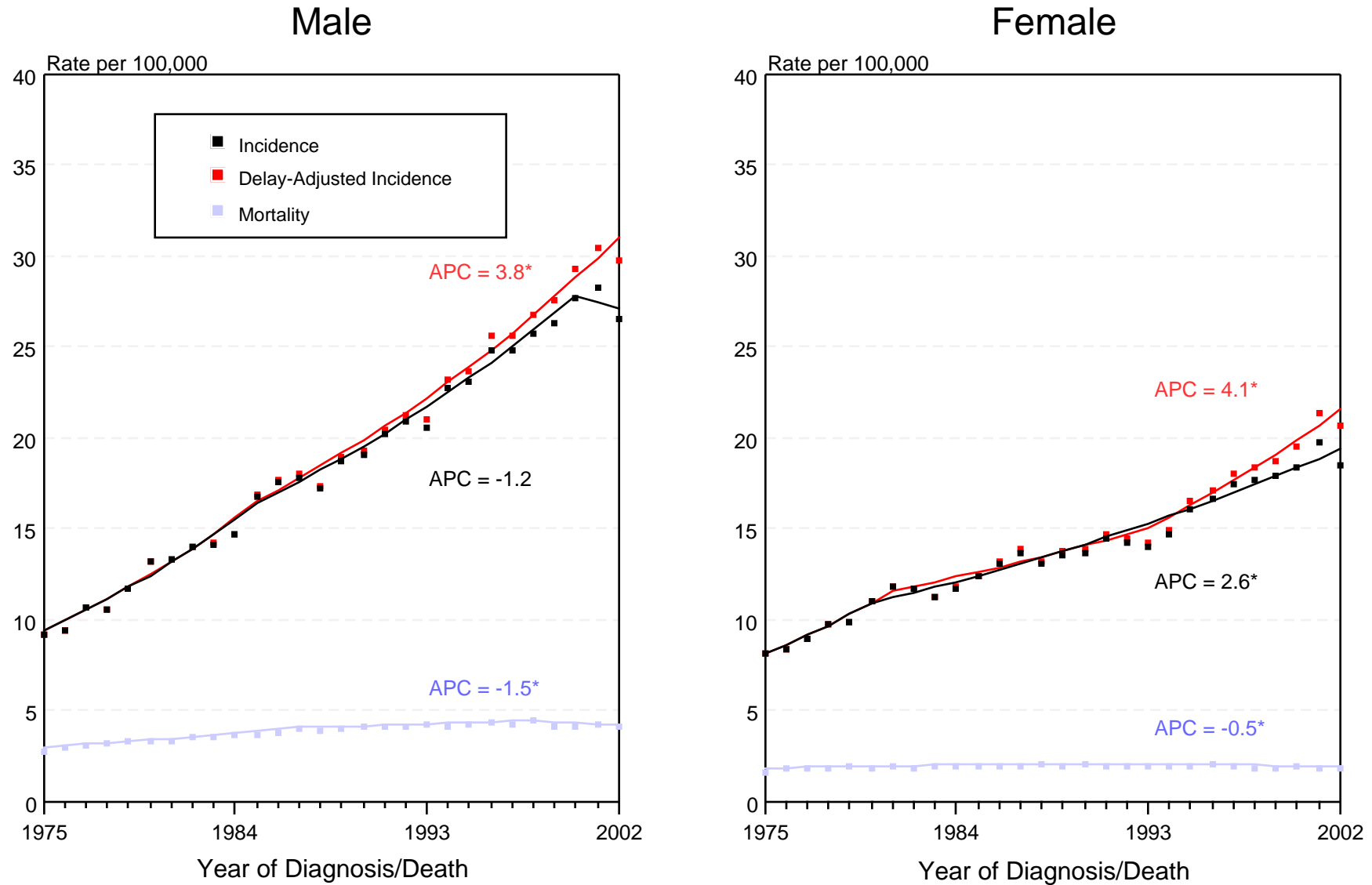


Figure XVI-1

+ Source: SEER 9 areas and NCHS public use data file for the total US. Rates are age-adjusted to the 2000 US Std Population (19 age groups - Census P25-1103). Regression lines and APCs are calculated using the Joinpoint Regression Program Version 3.0, April 2005, National Cancer Institute.

The APC is the Annual Percent Change for the regression line segments. The APC shown on the graph is for the most recent trend.

\* The APC is significantly different from zero ( $p < 0.05$ ).

# SEER Incidence and US Death Rates + Melanoma of the Skin, Both Sexes

Joinpoint Analyses for 1975-2002 for Whites and Blacks

Rates for 1992-2002 for Asian/Pacific Islander, American Indian/Alaska Native and Hispanic

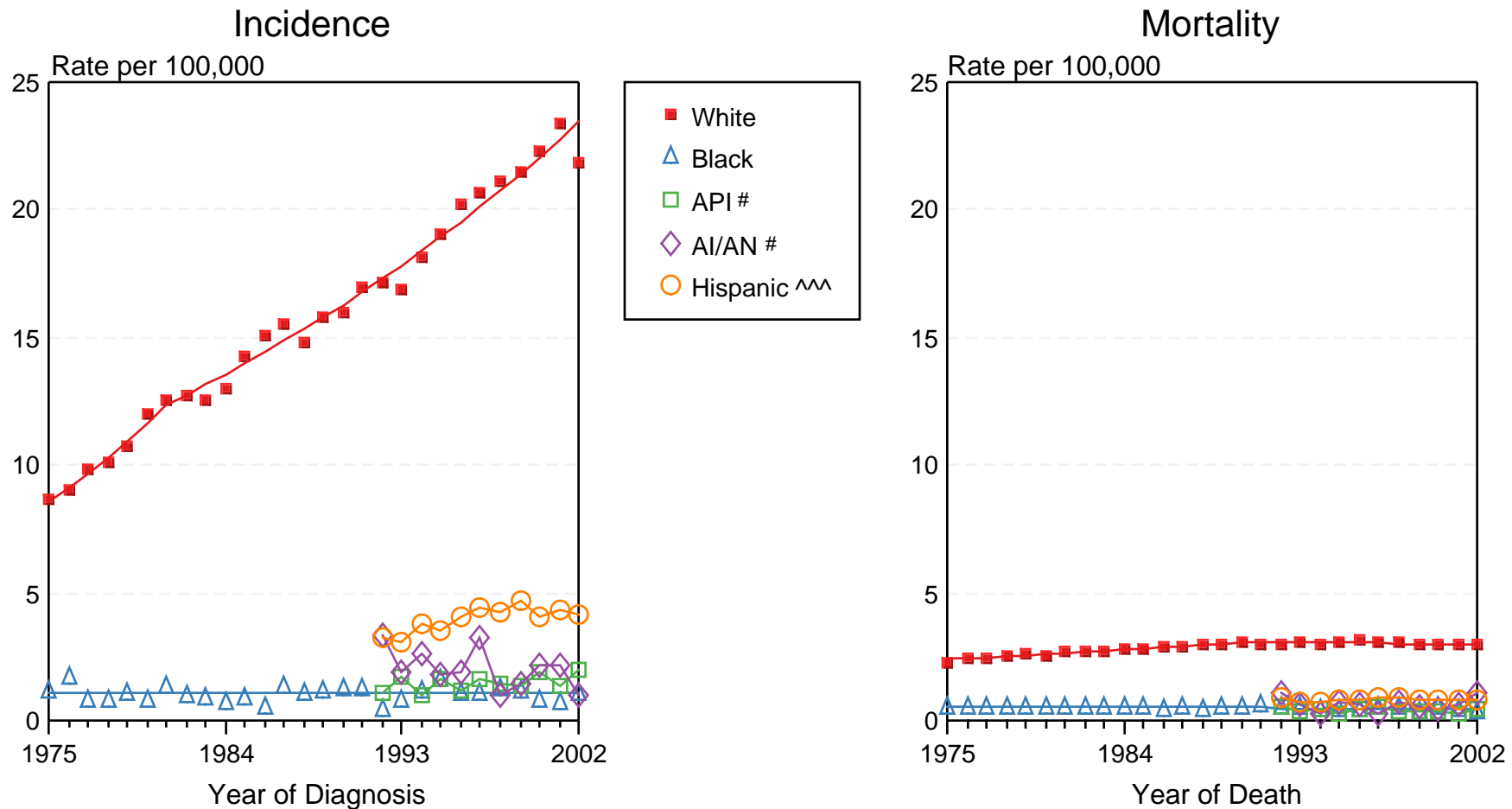


Figure XVI-2

+ Source: Incidence data for whites and blacks is from the SEER 9 areas (San Francisco, Connecticut, Detroit, Hawaii, Iowa, New Mexico, Seattle, Utah, Atlanta). Incidence data for Asian/Pacific Islanders, American Indian/Alaska Natives and Hispanics is from the SEER 13 Areas (SEER 9 Areas, San Jose-Monterey, Los Angeles, Alaska Native Registry and Rural Georgia). Mortality data is from NCHS public use data file for the total US. Rates are age-adjusted to the 2000 US Std Population (19 age groups - Census P25-1103). Regression lines for whites and blacks are calculated using the Joinpoint Regression Program Version 3.0, April 2005, National Cancer Institute.

# API = Asian/Pacific Islander. AI/AN = American Indian/Alaska Native.

^^ Hispanic is not mutually exclusive from Whites, Blacks, Asian/Pacific Islanders, and American Indians/Alaska Natives. Incidence data for Hispanics excludes cases from Detroit, Hawaii, Alaska Native Registry and Rural Georgia. Mortality data for Hispanics excludes cases from Connecticut, Maine, Maryland, Minnesota, Oklahoma, New Hampshire, New York, North Dakota, and Vermont.

# Melanoma of the Skin

## SEER Incidence 1990-1992 vs 2000-2002

### White, by Age and Sex

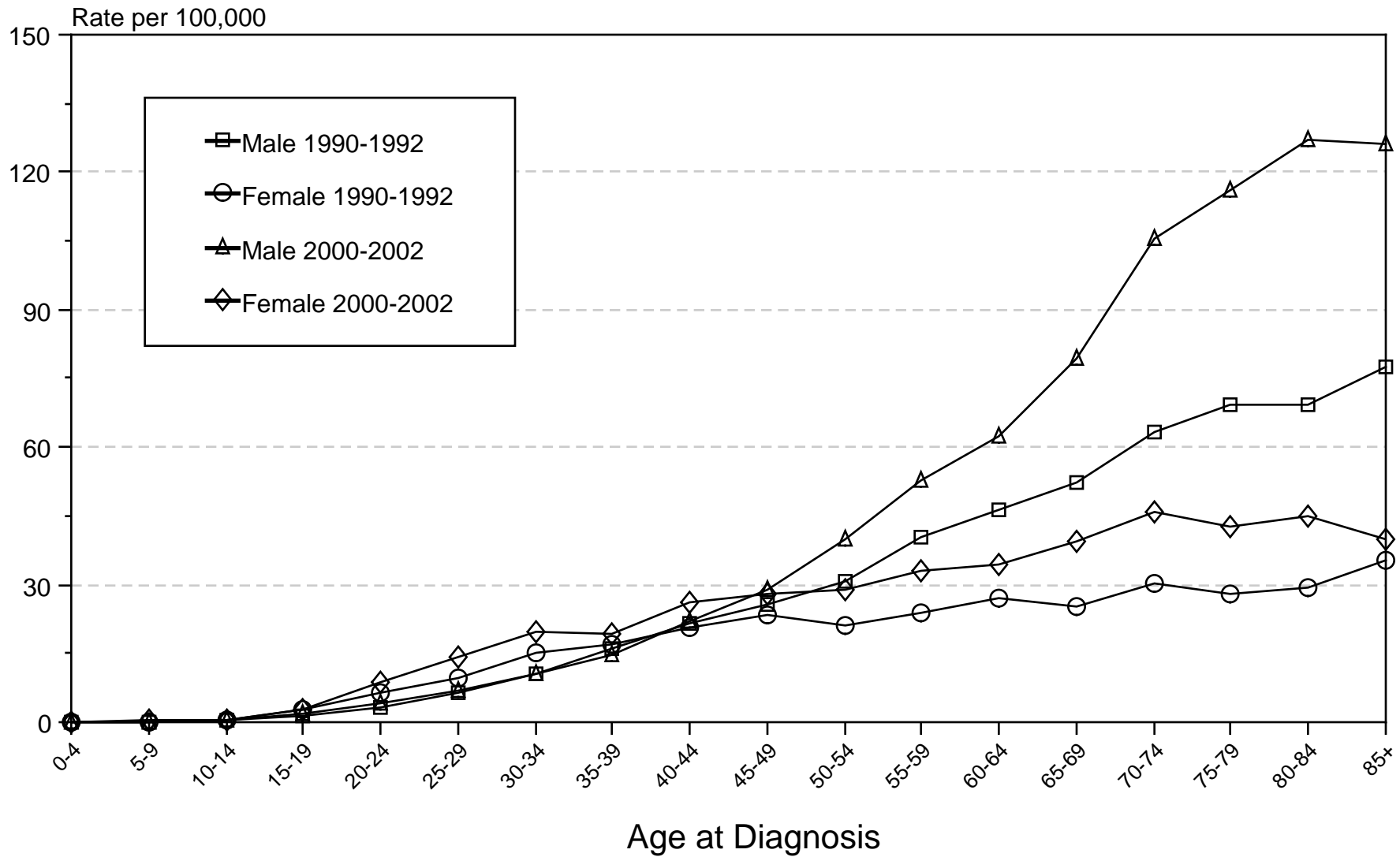


Figure XVI-3

Source: SEER 9 areas. Rates are age-adjusted to the 2000 US Std Population (19 age groups - Census P25-1103).