

## Make holiday travel easy – ride BART to the airport

If you're heading to SFO or Oakland International Airport this holiday season, take BART ... and you're there.

BART is the most reliable, least expensive and fastest way to get to the airport, whether you're heading out of town or picking someone up.

SFO-bound BART trains pull right into the International Terminal. From the BART station you can easily access domestic terminals with a short walk or a quick ride on SFO's free AirTrain shuttle. For Oakland International Airport, take BART to the Coliseum/Oakland Airport station and transfer to the AirBART shuttle, departing for the airport every 10 minutes.

For more information on airport service, or to plan your trip, visit [www.bart.gov/airport](http://www.bart.gov/airport).

### Reserve a BART Airport/Long Term parking space

Don't bother with pricey airport parking lots! Reserve a space at BART.

November 26 through December 1 and again December 19 through January 4,

BART will make 540 additional parking spaces available for Airport/Long Term parking reservations.

Reserved spaces are available at most

East Bay BART lots for just \$5 per day.

Airport/Long Term parking is also available at the Colma, South San Francisco, San Bruno and Millbrae BART stations for just \$6 per day.

Visit [www.bart.gov/parking](http://www.bart.gov/parking) for more information or to make your reservation.



### Take BART to the KPFA Crafts & Music Fair

Ride BART to the 38th Annual KPFA Crafts & Music Fair, December 13 and 14 and use the free shuttles from the Civic Center BART Station (at the 8th and Market Street MUNI bus stop) to the Fair and back.

This fantastic event offers collectors, craft enthusiasts and holiday shoppers

a unique opportunity to purchase high-quality, original, handcrafted work directly from the artists and learn firsthand about their craft. This year, many exhibitors will showcase eco-friendly green crafts that use repurposed materials and environmentally sensitive techniques.

For more information about the Fair, call 510/848-6767 ext. 646, or visit [www.kpfa.org/craftsfair](http://www.kpfa.org/craftsfair). To plan your BART trip, please visit [www.bart.gov](http://www.bart.gov).



### San Francisco expands transit benefits

San Francisco recently signed into law the most far-reaching transit benefit ordinance in the country. Employers have until January 19th to set up their transit program.

Commuter Check and the San Francisco Department of the Environment are holding an employer workshop to answer questions about the ordinance and explain the options employers have in participating. The workshop takes place Tuesday, November 18 from 1-3 p.m. in San Francisco City Hall, Room 416.

For more information, send an e-mail to [workshop@accorservicesusa.com](mailto:workshop@accorservicesusa.com).

#### From the General Manager

### Happy Holidays from BART...

It's November, the holiday season is quickly approaching and many of you are planning your holiday travel.

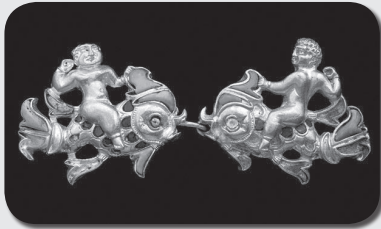
BART is a convenient and affordable option for airport travelers. This year, we began running more trains, more often to SFO and the Oakland International Airport. As an added service, this holiday season we're allocating more Airport/Long term parking for holiday travelers. You can read more about our holiday parking in this issue of BART Times or watch BARTtv News at [www.bart.gov/BARTtv](http://www.bart.gov/BARTtv).

This is the month when we take the time to celebrate all that we are thankful for. As part of BART's Thanksgiving tradition, I'd like to express just how grateful we are for your continued support and loyalty to BART. May you and your loved ones have a joyful holiday season.



Dorothy W. Dugger, General Manager

## Take BART to Afghanistan



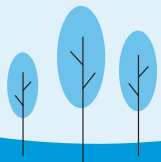
Extraordinary artifacts uncovered in modern-day Afghanistan, long thought stolen or destroyed, make their only West Coast appearance on their United States tour at the Asian Art Museum of San Francisco, October 24 through January 25.

Take BART to *Afghanistan: Hidden Treasures from the National Museum, Kabul* at the Asian Art Museum.

The museum is one block west of the Civic Center BART station. Leave the station by the Grove Street exit, head one block north on Hyde to Fulton. Make a left on Fulton, walk one block west (toward City Hall) on Fulton to Larkin. Make a right on Larkin. Enter the museum at 200 Larkin Street.

For more information, visit [www.asianart.org](http://www.asianart.org). To plan your BART trip, please visit [www.bart.gov](http://www.bart.gov).

## BART Eco-fact



### Newspaper recycling available at all BART stations

If you're one of the tens of thousands of people who bring newspapers on BART, take your newspaper with you when you get off the train and recycle it. Just toss your paper in one of the recycling bins on the concourse level of each station and we'll take care of it.



For more about BART's recycling program, check out the story on BART TV at [www.bart.gov/barttv](http://www.bart.gov/barttv).

## November Good Times calendar

### Mark Curry's Hot Monday Nights

Oakland Museum of California  
1000 Oak Street, [www.museumca.org](http://www.museumca.org)

#### > BART: LAKE MERRITT

*Mondays, Nov. 10, 17 and 24, 7:30 p.m.:* Mark Curry has been making people laugh in comedy clubs around the world for over two decades. Well-known as the star of the ABC sitcom *Hangin' with Mr. Cooper*, Curry has also had a recurring role as Drew's boss on *The Drew Carey Show*. The Oakland native now brings his comedy home to the Oakland Museum of California every Monday night. Tickets are \$20; \$18 for museum members. Tickets at the door or online at [www.markcurrycomedy.com](http://www.markcurrycomedy.com). Museum members who buy tickets online will get a \$2 refund at the door with presentation of their membership card. No-host bar.

### Lily Cai Chinese Dance Company

Highlights from the Repertoire plus a world premiere  
Yerba Buena Center for the Arts  
700 Howard Street, San Francisco  
[www.ybca.org](http://www.ybca.org) or 415/978-2787

#### > BART: POWELL OR MONTGOMERY

*Friday, Nov. 14, and Saturday, Nov. 15, 8 p.m.:* A celebration of the company's 20 years of innovation in Eastern and Western dance, plus the world premiere of a piece exploring the strength, complexity and inner beauty of the Chinese woman.

### David Pinto and Syncopated Colors – Afro-Peruvian grooves meet jazz

Jazzschool, 2087 Addison Street, Berkeley  
[www.jazzschool.com](http://www.jazzschool.com) or 510/845-5373

#### > BART: DOWNTOWN BERKELEY

*Sunday, Nov. 16, 4:30 p.m.:* An afternoon of traditional Afro-Peruvian music, percussion and dance melded together with jazz.

### Embarcadero Center Lighting Ceremony

Embarcadero Center Ice Rink  
Justin Herman Plaza, San Francisco  
[www.embarcaderocenter.com](http://www.embarcaderocenter.com)

#### > BART: EMBARCADERO

*Friday, Nov. 21, 5:30 p.m.:* Skating, dancing and songs from "Disney's High School Musical: The Ice Tour"; kids' events; performances by local musicians; and fireworks celebrate the annual lighting of the Embarcadero Center office towers. The ice rink will be open for skating for nine weeks, from Nov. 12, 2008, through Jan. 4, 2009.



### Doubt

Center REPeratory Company  
Dean Lesher Center for the Arts  
1601 Civic Drive, Walnut Creek  
[www.lesherartscenter.org](http://www.lesherartscenter.org) or 925/943-SHOW

#### > BART: WALNUT CREEK

*Through Nov. 22:* Timothy Near directs a sensational drama with the crackling intensity of a good mystery.

### FBI Turns 100 exhibit

San Francisco Main Public Library  
Government Information Center, fifth floor  
100 Larkin Street at Grove, [www.sfpl.org](http://www.sfpl.org)

#### > BART: CIVIC CENTER

*Through Dec. 1:* The FBI began in 1908 as a small investigative bureau within the Department of Justice with 34 agents. An exhibit of items and documents from the library's collection and the San Francisco Historical Photo Collection shows this evolving government agency at work.

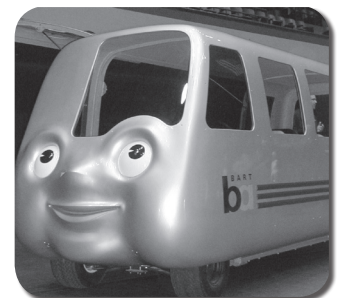


## BARTmobile returns to S.F. Auto Show

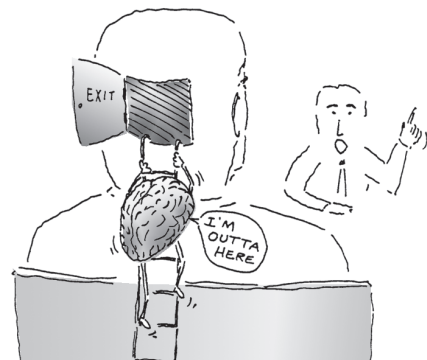
The San Francisco International Auto Show is back with over 800 vehicles from over 40 of the world's top manufacturers. But nestled among the classic cars and sleek roadsters, you'll find a different sort of car ... the BARTmobile!

For more info, visit [sfautoshow.com](http://sfautoshow.com). The event will be held at the Moscone Center in San Francisco Saturday, November 22 through Saturday, November 29.

Take BART to Powell Street Station to get to the show.



BARToon [grimescartoons.com](http://grimescartoons.com)



© JIM GRIMES

During long meetings, Ralph's mind would tend to wander...