

Unemployment Insurance Data Summary

[Individual State Data](#)

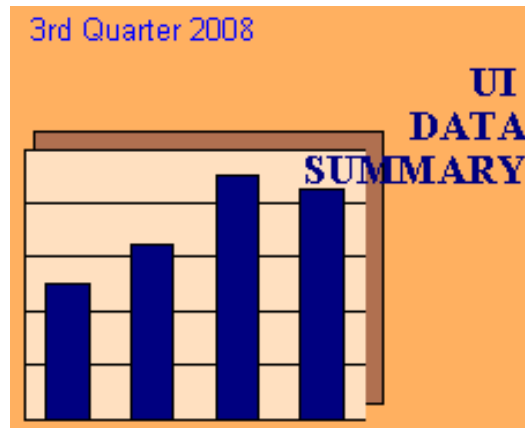
[US Summary Tables](#)

- [Summary Benefits Data](#)
- [Summary Financial Data](#)
- [Benefits and Duration Data](#)
- [Summary Labor Force Data](#)
- [Wage and Tax Rate Data](#)

[Charts](#)

[Glossary of data definitions](#)

[Choose another quarter](#)



The UI Data Summary is produced quarterly from state-reported data contained in the Unemployment Insurance Data Base (UIDB) as well as UI-related data from outside sources (e.g., Bureau of Labor Statistics data on employment and unemployment and U.S. Department of Treasury data on state UI trust fund activities). This data base is maintained by the Division of Fiscal and Actuarial Services, Office of Workforce Security (OWS), U.S. Department of Labor.

This report is intended to provide the user with a quick overview of the status of the UI system at the national and state levels. Tables are provided for each state and many data items are repeated on [summary tables](#) which show all states together. The [glossary](#) gives the definition of each data item in the report. Except for reciprocity rates, UCFE and UCX data is not included. Except for covered employment and wage data, which have a reporting/processing lag, all the data refers to the same quarter. This quarter is shown on the front cover and is also the first column heading on each individual state page. The year and quarter are indicated by the notation CYyyyy.q (e.g. CY1995.4). For many data items, the report shows -- in addition to the latest quarter -- data for the latest twelve months, the highest and lowest quarters historically, and the state's rank among all states. If a state has failed to report for a particular time period, estimated data are used; however, if the time period extends too far for reasonable estimates, blanks are displayed instead.

Your comments and suggestions are welcomed. For further information please contact **Kevin Stapleton** at the Division of Fiscal and Actuarial Services, Room C-4531, 200 Constitution Ave., NW, Washington, DC 20210, phone (202) 693-3009. You can also reach the receptionist at (202) 693-3039. If you want quarterly copies mailed to you, add your name to the [Data summary mailing list](#).

NOTE: Starting with 2006.3, interstate initial claims and weeks claimed are reported in the paying state rather than the state of residence.

ALSO: Blank cells appearing in any section of this report indicates that information is unavailable.

ATTENTION:

Now available on the Department of Labor, Office of Workforce Security website, and by mail, is a new report called “**Significant Measures of State Unemployment Insurance Tax Systems**” (<http://www.ows.doleta.gov/unemploy/finance.asp>). This will be a yearly report containing a compilation of new and existing tax measures for each state, which is intended to provide users with the information necessary to evaluate and compare state UI tax systems. The report is produced by the Division of Fiscal and Actuarial Services in the Office of Workforce Security and calendar years 2006 and 2005 are now available.

Charts Categories: 3rd Quarter 2008

[Data Summary Home](#)

[Data Summary Glossary](#)

[Data Summary Mailing List](#)

[OWS Homepage](#)

Click on desired Chart Category to jump to that section:

[Regular Benefits](#)

[Trust Fund Balance](#)

[Revenues](#)

[Regular AWBA](#)

[Initial Claims](#)

[Weeks Claimed](#)

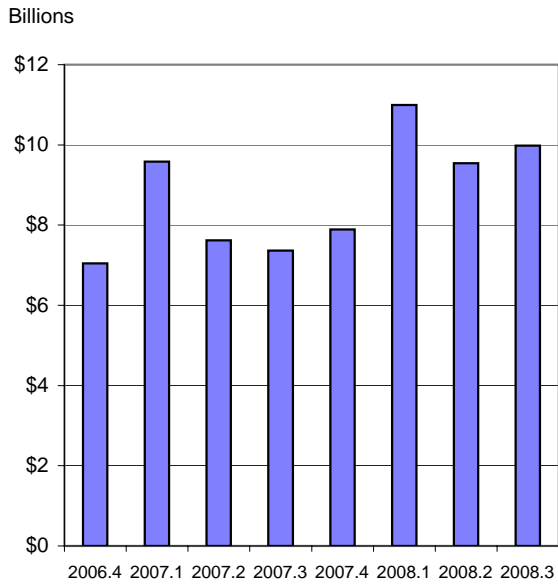
[First Payments](#)

[Exhaustions](#)

[AHCM](#)

Note: Blank cells appearing in any section of this report indicates that information is unavailable.

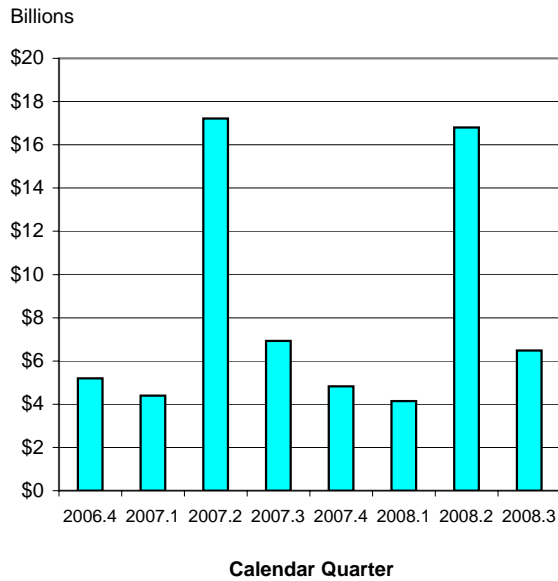
REGULAR BENEFITS



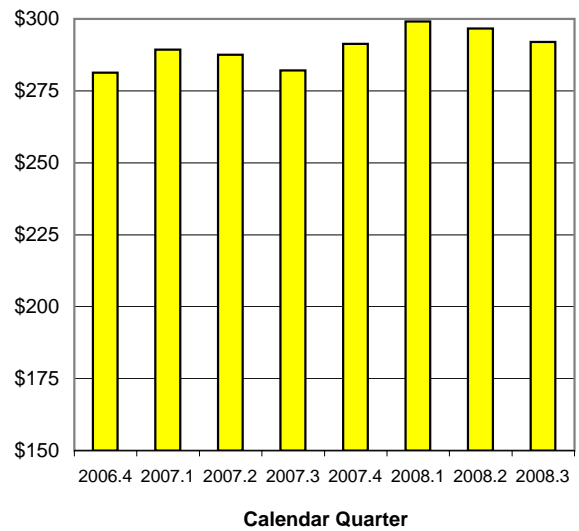
TRUST FUND BALANCE



REVENUES

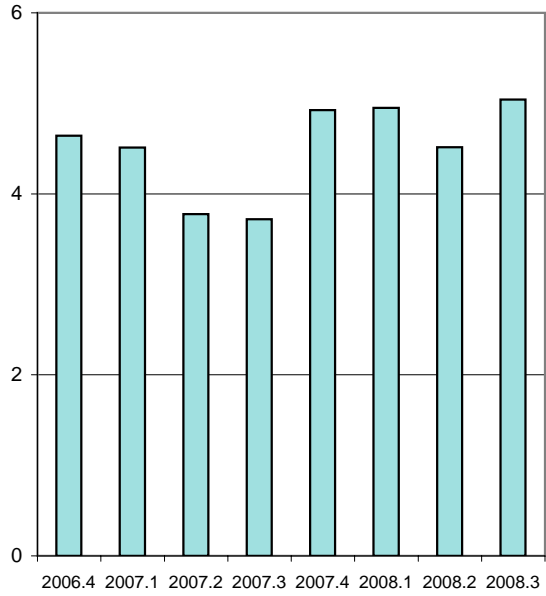


REGULAR AWBA



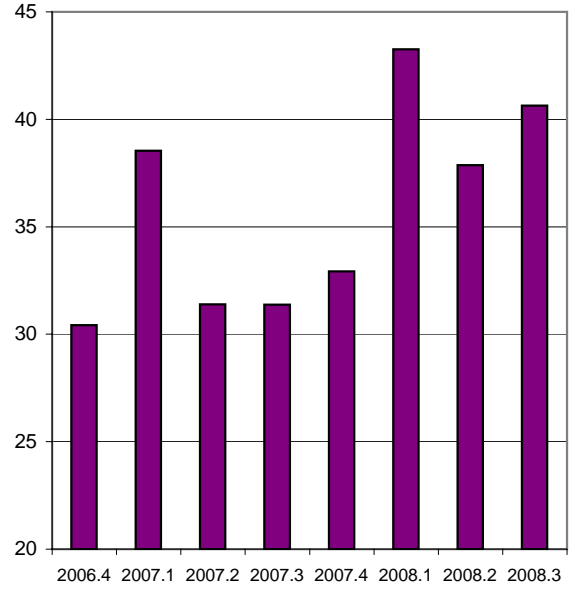
Millions

INITIAL CLAIMS



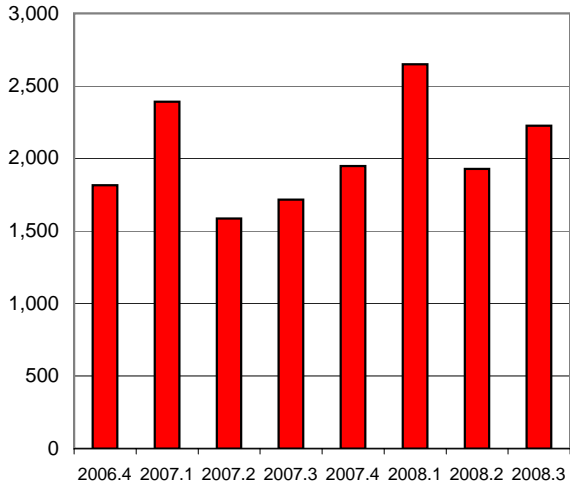
Millions

WEEKS CLAIMED



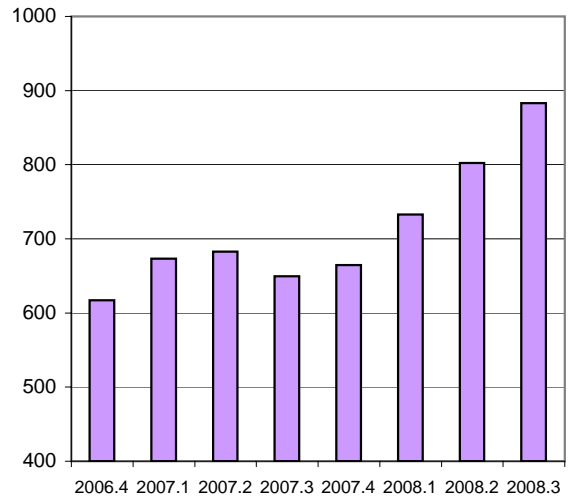
FIRST PAYMENTS

Thousands

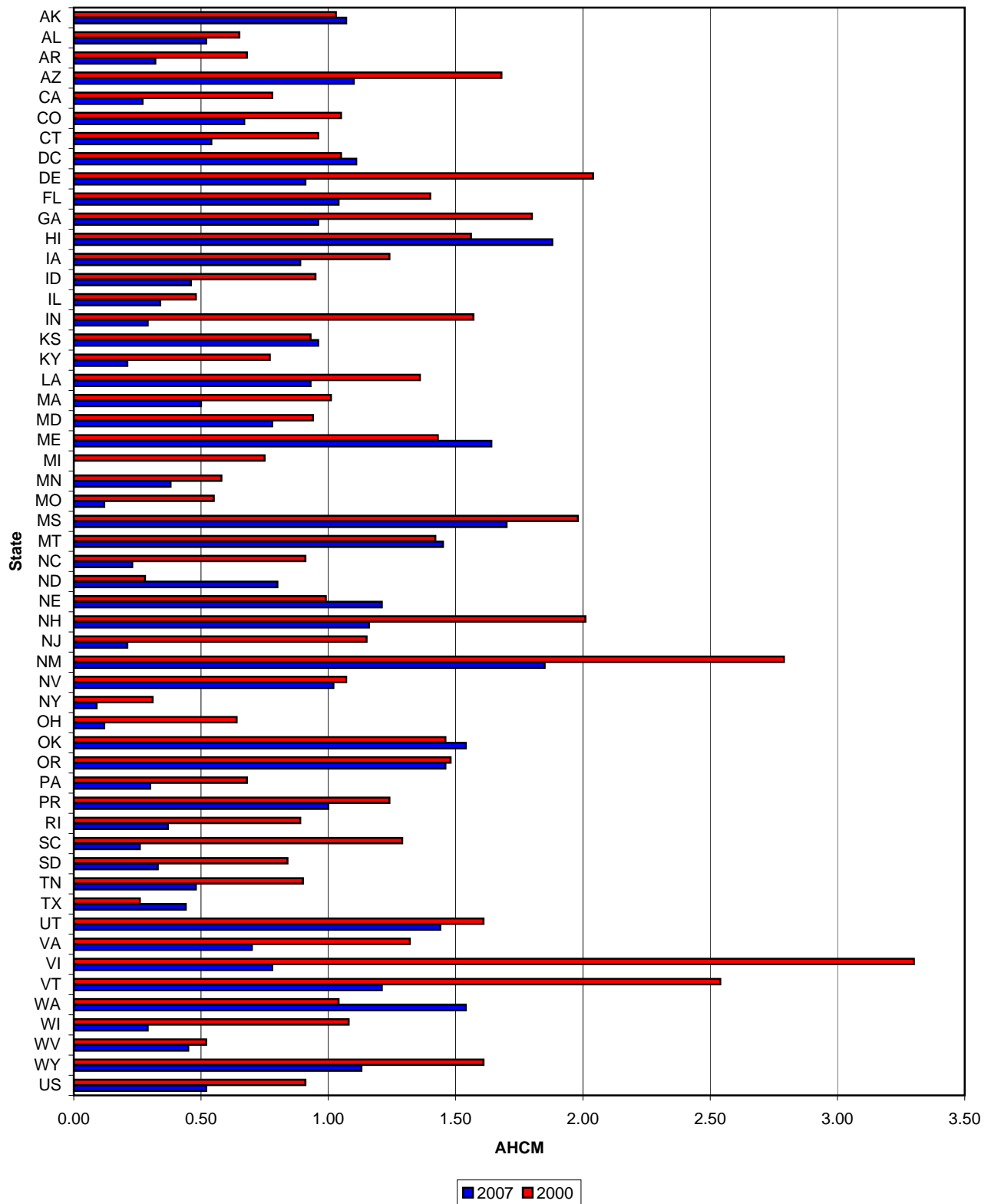


EXHAUSTIONS

Thousands



AHCM CY 2007 vs CY 2000



Summary Tables: 3rd Quarter 2008

[Data Summary Home](#)

[Data Summary Glossary](#)

[Data Summary Mailing List](#)

[OWS Homepage](#)

Click on desired information to jump to that section:

[Summary Benefits Data](#)

[Summary Financial Data](#)

[Benefits and Duration Data](#)

[Labor Force Information](#)

[Wage and Tax Rate Information](#)

Note: Blank cells appearing in any section of this report indicates that information is unavailable.

Regular Benefits Information by State for CYQ 2008.3

State	Initial Claims	First Payments	Weeks Claimed	Weeks Compensated	Exhaustions	Exhaustion Rate
Alabama	75,288	34,200	460,065	425,362	10,159	30.9%
Alaska	18,471	6,119	113,954	93,585	2,922	40.7%
Arizona	71,236	33,894	665,869	576,290	15,756	46.9%
Arkansas	52,465	20,817	409,756	316,586	7,820	36.4%
California	726,576	332,102	6,423,347	5,545,346	144,658	48.0%
Colorado	33,959	19,086	346,914	274,854	9,169	43.9%
Connecticut	59,572	32,328	627,584	588,824	12,665	34.3%
Delaware	15,629	7,012	134,909	123,713	2,735	36.5%
District of Columbia	9,334	5,907	114,571	157,488	2,813	58.9%
Florida	252,928	140,015	2,558,205	2,153,417	62,539	53.0%
Georgia	173,894	67,775	1,042,611	890,908	29,432	41.9%
Hawaii	23,632	9,729	169,877	146,888	2,299	27.9%
Idaho	25,975	11,309	163,575	147,169	3,883	31.2%
Illinois	195,020	86,926	1,846,569	1,624,206	40,431	38.2%
Indiana	142,807	57,263	879,036	756,908	21,742	42.6%
Iowa	55,316	20,910	297,930	273,533	5,472	24.5%
Kansas	37,177	14,700	269,153	245,825	6,378	32.8%
Kentucky	97,059	30,488	476,110	465,586	8,017	23.7%
Louisiana	91,529	16,346	361,076	260,622	6,052	38.3%
Maine	14,619	6,268	119,874	100,338	2,656	33.8%
Maryland	61,846	30,558	582,911	504,558	12,044	36.7%
Massachusetts	95,610	54,662	1,219,012	1,037,348	23,537	38.1%
Michigan	258,474	122,792	1,850,107	1,657,472	42,704	36.7%
Minnesota	51,644	25,067	549,102	465,483	11,274	36.6%
Mississippi	42,524	18,872	329,778	271,987	5,162	33.8%
Missouri	100,484	37,286	706,780	575,295	13,575	32.9%
Montana	10,349	4,273	82,166	74,840	1,849	36.0%
Nebraska	16,348	7,712	121,875	95,665	3,406	42.9%
Nevada	59,830	29,667	501,350	454,526	12,314	43.7%
New Hampshire	14,009	6,828	113,258	98,459	1,877	21.1%
New Jersey	137,358	87,597	1,799,110	1,632,634	41,900	48.2%
New Mexico	15,819	8,559	175,550	142,980	3,838	45.2%
New York	278,329	139,332	2,602,498	2,234,583	51,409	37.1%
North Carolina	219,065	82,227	1,375,261	1,131,478	34,441	45.8%
North Dakota	5,989	2,750	30,521	24,362	532	35.7%
Ohio	199,538	72,229	1,447,034	1,147,031	27,065	30.4%
Oklahoma	27,763	11,676	215,360	182,023	4,361	37.9%
Oregon	98,076	37,287	692,663	599,785	14,549	33.1%
Pennsylvania	286,481	116,630	2,386,583	2,067,427	45,333	31.9%
Puerto Rico	61,236	31,415	596,600	545,777	11,180	47.7%
Rhode Island	19,625	10,492	198,356	179,470	5,023	44.9%
South Carolina	99,045	37,028	663,482	516,414	14,433	42.1%
South Dakota	3,307	1,270	18,357	14,714	189	11.4%
Tennessee	91,774	46,376	657,590	640,214	16,400	39.6%
Texas	250,679	95,113	1,610,427	1,396,847	35,587	41.1%
Utah	20,683	8,433	161,370	135,132	3,418	37.5%
Vermont	8,519	3,956	79,737	71,074	1,158	20.0%
Virgin Islands	1,323	627	11,294	9,871	316	53.9%
Virginia	76,466	31,439	524,398	442,284	12,671	37.2%
Washington	111,049	42,267	740,509	633,196	12,303	22.8%
West Virginia	14,765	8,466	153,274	135,317	3,085	23.8%
Wisconsin	128,720	57,492	936,361	847,647	17,754	26.6%
Wyoming	4,144	1,791	29,202	27,877	737	31.1%
United States	5,043,357	2,225,363	40,642,861	35,161,218	883,022	39.0%

Financial Information by State for CYO 2008.3

State	Revenues (000) {Last 12 Months}	TF Balance (000)	TF as % of Total Wages*	Interest Earned (000)	AHCM+	HCM+
Alabama	\$231,358	\$395,511	0.67	\$4,984	0.52	0.33
Alaska	\$136,779	\$346,883	3.35	\$4,065	1.07	0.77
Arizona	\$290,273	\$964,520	1.08	\$11,928	1.12	0.45
Arkansas	\$263,264	\$151,276	0.46	\$1,982	0.32	0.18
California	\$4,869,746	\$1,785,177	0.28	\$27,439	0.27	0.18
Colorado	\$415,479	\$699,891	0.78	\$8,502	0.67	0.59
Connecticut	\$565,401	\$566,678	0.72	\$7,148	0.54	0.23
Delaware	\$84,202	\$153,778	0.96	\$1,917	0.90	0.42
District of Columbia	\$110,751	\$423,003	1.48	\$5,099	1.10	0.79
Florida	\$849,082	\$1,767,806	0.69	\$23,188	1.05	0.46
Georgia	\$519,012	\$1,151,446	0.81	\$14,446	0.98	0.43
Hawaii	\$83,245	\$485,523	2.68	\$6,023	1.88	1.5
Idaho	\$110,741	\$128,142	0.72	\$1,603	0.47	0.35
Illinois	\$1,977,454	\$1,849,318	0.79	\$22,783	0.35	0.3
Indiana	\$549,337	\$90,735	0.10	\$2,052	0.29	0.2
Iowa	\$363,127	\$756,589	1.77	\$8,865	0.88	0.68
Kansas	\$223,343	\$635,593	1.37	\$7,740	0.97	0.72
Kentucky	\$392,982	\$194,414	0.37	\$2,683	0.21	0.16
Louisiana	\$170,236	\$1,483,865	2.51	\$17,710	0.94	0.83
Maine	\$99,943	\$466,735	3.00	\$5,559	1.64	1.12
Maryland	\$388,071	\$896,734	0.99	\$11,170	0.79	0.53
Massachusetts	\$1,519,733	\$1,403,903	0.95	\$17,219	0.50	0.28
Michigan	\$1,590,532	\$35,773	0.03	\$0	N.A.	N.A.
Minnesota	\$832,356	\$574,137	0.60	\$6,735	0.38	0.3
Mississippi	\$105,600	\$717,381	2.50	\$8,641	1.70	1.32
Missouri	\$605,678	\$221,588	0.26	\$2,795	0.12	0.07
Montana	\$82,866	\$282,048	2.37	\$3,336	1.45	0.82
Nebraska	\$109,979	\$296,858	1.17	\$3,560	1.19	0.73
Nevada	\$358,686	\$714,598	1.50	\$8,888	1.02	0.63
New Hampshire	\$51,776	\$196,300	0.90	\$2,462	1.19	0.44
New Jersey	\$1,957,272	\$792,885	0.45	\$10,413	0.21	0.11
New Mexico	\$87,426	\$543,833	2.38	\$6,520	1.88	1.6
New York	\$2,316,834	\$809,721	0.20	\$7,481	0.09	0.04
North Carolina	\$924,136	\$439,808	0.34	\$5,841	0.23	0.13
North Dakota	\$49,706	\$137,638	1.57	\$1,610	0.79	0.71
Ohio	\$1,099,404	\$333,956	0.20	\$4,369	0.12	0.09
Oklahoma	\$166,021	\$856,198	1.84	\$10,245	1.51	1.39
Oregon	\$804,084	\$2,121,559	3.92	\$25,325	1.46	1.14
Pennsylvania	\$2,214,250	\$1,483,767	0.78	\$19,380	0.30	0.25
Puerto Rico	\$180,930	\$539,026	3.24	\$6,449	1.00	0.73
Rhode Island	\$187,785	\$114,033	0.79	\$1,490	0.38	0.25
South Carolina	\$284,134	\$102,549	0.19	\$1,721	0.26	0.13
South Dakota	\$26,620	\$28,245	0.29	\$332	0.33	0.25
Tennessee	\$412,978	\$558,644	0.62	\$7,140	0.48	0.3
Texas	\$1,035,946	\$1,671,383	0.42	\$21,293	0.45	0.41
Utah	\$148,286	\$851,275	2.29	\$10,137	1.47	1.17
Vermont	\$63,146	\$153,975	1.91	\$1,881	1.20	0.71
Virgin Islands	\$1,505	\$15,162	1.30	\$195	0.80	0.7
Virginia	\$342,558	\$731,008	0.54	\$9,093	0.71	0.45
Washington	\$1,125,909	\$4,117,673	3.88	\$48,666	1.53	0.98
West Virginia	\$140,521	\$249,994	1.38	\$2,998	0.45	0.35
Wisconsin	\$668,123	\$413,611	0.49	\$5,404	0.29	0.23
Wyoming	\$55,677	\$258,691	2.87	\$3,038	1.15	0.97
United States	\$32,244,285	\$37,160,837	0.76	\$461,543	0.52	0.36

+ Refers to most recent calendar year. Fourth and first quarter issues publish measure based on extrapolated wages; Second and third quarter issues publish measure based on actual wages.

* Based on extrapolated wages for the most recent 12 months.

N.A. : Not Applicable -- These states have outstanding debt exceeding their fund balances

Benefits and Duration Information by State for CYQ 2008.3

State	Regular Benefits Paid (000)	Extended Benefits Paid (000)	AWBA	Average Duration	Avg Benefits per First Payment
Alabama	\$81,848	\$0	\$194.54	12.1	\$2,309
Alaska	\$18,292	\$3,109	\$200.02	14.3	\$2,821
Arizona	\$122,486	\$0	\$214.86	15.3	\$3,253
Arkansas	\$78,652	\$0	\$261.11	13.6	\$3,405
California	\$1,635,490	\$0	\$306.33	16.8	\$4,961
Colorado	\$92,227	\$0	\$339.71	13.4	\$4,478
Connecticut	\$174,729	\$0	\$310.80	16.2	\$4,932
Delaware	\$31,003	\$0	\$255.60	17.3	\$4,401
District of Columbia	\$44,881	\$0	\$288.99	21.9	\$6,204
Florida	\$503,841	\$0	\$236.29	15.3	\$3,610
Georgia	\$235,452	\$0	\$270.86	11.8	\$3,099
Hawaii	\$59,771	\$0	\$414.17	13.7	\$5,492
Idaho	\$36,991	\$0	\$267.46	12.5	\$3,186
Illinois	\$480,540	\$0	\$297.07	17.4	\$5,391
Indiana	\$216,146	\$0	\$291.97	12.9	\$3,705
Iowa	\$76,157	\$0	\$290.43	12.3	\$3,520
Kansas	\$75,088	\$0	\$310.08	14.3	\$4,385
Kentucky	\$137,050	\$0	\$304.98	14.4	\$4,110
Louisiana	\$54,141	\$0	\$209.58	14.4	\$2,978
Maine	\$25,974	\$0	\$266.42	14.3	\$3,637
Maryland	\$152,012	\$0	\$305.59	15.5	\$4,583
Massachusetts	\$397,361	\$0	\$383.77	18.1	\$6,874
Michigan	\$480,824	\$0	\$300.28	15.0	\$4,337
Minnesota	\$153,422	\$0	\$335.99	17.1	\$5,745
Mississippi	\$47,787	\$0	\$180.77	13.6	\$2,365
Missouri	\$136,023	\$0	\$242.68	14.2	\$3,281
Montana	\$16,641	\$0	\$239.07	15.0	\$3,508
Nebraska	\$22,099	\$0	\$238.51	11.9	\$2,756
Nevada	\$128,205	\$0	\$289.30	15.0	\$4,248
New Hampshire	\$25,684	\$0	\$270.29	13.1	\$3,472
New Jersey	\$579,119	\$0	\$366.34	18.3	\$6,578
New Mexico	\$39,750	\$0	\$280.73	16.4	\$4,469
New York	\$655,216	\$0	\$304.62	16.8	\$4,932
North Carolina	\$316,644	\$0	\$289.05	13.9	\$3,821
North Dakota	\$6,619	\$0	\$273.79	11.3	\$3,142
Ohio	\$341,161	\$0	\$302.51	15.4	\$4,514
Oklahoma	\$48,974	\$0	\$273.98	14.8	\$3,813
Oregon	\$176,749	\$0	\$300.95	14.5	\$4,224
Pennsylvania	\$635,847	\$0	\$325.06	16.4	\$5,114
Puerto Rico	\$59,427	\$0	\$111.47	18.3	\$2,001
Rhode Island	\$62,212	\$392	\$357.41	16.3	\$5,823
South Carolina	\$120,087	\$0	\$239.06	13.7	\$3,168
South Dakota	\$3,325	\$0	\$230.21	11.0	\$2,533
Tennessee	\$139,173	\$0	\$220.03	13.7	\$2,950
Texas	\$408,217	\$0	\$301.31	14.2	\$4,117
Utah	\$41,059	\$0	\$309.66	14.0	\$4,250
Vermont	\$19,259	\$0	\$282.63	14.8	\$4,165
Virgin Islands	\$3,059	\$0	\$320.25	17.3	\$5,536
Virginia	\$122,573	\$0	\$283.51	12.8	\$3,485
Washington	\$215,455	\$0	\$357.03	13.5	\$4,473
West Virginia	\$30,905	\$0	\$235.65	13.8	\$3,220
Wisconsin	\$203,740	\$0	\$262.97	13.6	\$3,360
Wyoming	\$8,524	\$0	\$310.46	13.1	\$3,896
United States	\$9,977,909	\$3,500	\$292.02	15.3	\$4,384

Labor Force Information by State (Levels in thousands) for CYQ 2008.3

State	IUR (%)	TUR (%)	Covered Employment **	Civilian Labor Force	Total Unemployment	Insured Unemployment	
						Regular Programs *	All Programs +
Alabama	2.0	5.4	1,888	2,184	117.3	37.2	50.3
Alaska	2.7	6.0	283	366	22.1	8.1	10.4
Arizona	2.1	5.8	2,583	3,116	180.1	53.6	67.9
Arkansas	2.8	4.7	1,149	1,386	64.7	32.3	41.4
California	3.2	7.6	15,239	18,522	1,405.3	492.4	610.8
Colorado	1.2	5.1	2,237	2,774	141.3	27.4	38.6
Connecticut	2.8	6.2	1,657	1,909	117.6	47.1	63.7
Delaware	2.5	4.7	411	448	21.2	10.4	13.2
District of Columbia	1.1	7.1	485	336	23.9	5.5	7.9
Florida	2.6	6.7	7,756	9,397	630.9	198.8	270.5
Georgia	2.1	6.4	3,956	4,921	314.7	84.3	124.2
Hawaii	2.1	4.4	593	666	29.5	12.7	14.9
Idaho	2.0	4.0	629	760	30.6	13.2	15.9
Illinois	2.4	7.1	5,689	6,768	477.4	141.5	194.2
Indiana	2.4	6.1	2,809	3,267	198.6	67.6	90.8
Iowa	1.6	4.0	1,446	1,689	67.3	22.9	30.8
Kansas	1.5	4.8	1,329	1,502	72.3	20.2	23.3
Kentucky	2.2	6.7	1,750	2,052	136.7	38.6	49.1
Louisiana	1.6	4.9	1,845	2,055	100.3	29.1	33.8
Maine	1.6	4.9	570	723	35.6	9.6	13.0
Maryland	2.0	4.5	2,392	3,038	136.4	48.9	63.5
Massachusetts	2.9	5.2	3,145	3,442	178.4	92.8	121.2
Michigan	3.5	8.6	4,002	4,982	429.3	144.9	213.1
Minnesota	1.6	5.7	2,609	2,960	168.6	42.4	42.4
Mississippi	2.4	7.9	1,107	1,334	105.6	26.9	35.4
Missouri	2.1	6.4	2,636	3,022	194.5	56.3	67.2
Montana	1.6	3.7	417	511	18.9	6.7	8.5
Nebraska	1.0	3.3	892	1,000	33.3	9.3	14.1
Nevada	3.1	7.0	1,247	1,409	98.2	38.9	49.8
New Hampshire	1.5	3.9	614	751	29.3	9.0	10.6
New Jersey	3.5	5.7	3,863	4,552	260.5	135.4	195.5
New Mexico	1.8	4.4	790	962	42.1	14.0	20.6
New York	2.4	5.5	8,394	9,686	535.3	201.8	276.9
North Carolina	2.7	6.7	3,984	4,610	310.8	107.5	148.4
North Dakota	0.8	3.1	331	380	11.8	2.6	3.1
Ohio	2.2	7.1	5,112	6,048	429.2	113.5	145.2
Oklahoma	1.2	3.8	1,504	1,751	66.3	17.2	22.2
Oregon	3.2	5.9	1,675	1,970	116.7	54.5	67.9
Pennsylvania	3.3	5.5	5,488	6,466	355.9	180.9	242.7
Puerto Rico	4.7	12.3	987	1,364	167.6	47.3	68.6
Rhode Island	3.2	8.4	454	577	48.5	15.0	21.1
South Carolina	2.9	7.4	1,845	2,178	160.6	54.1	77.1
South Dakota	0.4	2.9	376	451	13.2	1.7	1.9
Tennessee	2.0	6.8	2,683	3,061	209.4	52.7	74.6
Texas	1.2	5.1	10,171	11,798	604.7	125.4	167.3
Utah	1.1	3.6	1,180	1,393	49.7	12.7	15.4
Vermont	2.0	4.6	296	356	16.2	6.0	7.5
Virgin Islands	1.6		45			0.7	1.0
Virginia	1.2	4.4	3,481	4,171	184.7	41.2	53.8
Washington	2.0	5.5	2,841	3,488	191.2	57.8	71.3
West Virginia	1.8	3.9	675	812	31.7	12.6	16.2
Wisconsin	2.7	4.6	2,698	3,101	143.3	72.9	95.6
Wyoming	0.8	3.0	269	295	8.8	2.1	2.5
United States	2.4	6.0	132,504	155,399	9,370.0	3,158.3	4,186.7

* Includes State UI, UCFE, and UCX

** Wages and Covered Employment lag the rest of the Data Summary information by 6 months.

+ Includes EUC08

Note: Blank cells appearing in any section of this report indicates that information is unavailable.

Wage and Tax Rate Information by State for CYQ 2008.1

State	Total Wages (000)	Total Wages (Taxed Employers) (000)	Taxable Wages (000)	Average Tax Rates on:		Current Taxable Wage Base
				Taxable Wages	Total Wages	
Alabama	\$17,785,681	\$14,587,804	\$8,796,478	1.43	0.37	\$8,000
Alaska	\$3,113,059	\$2,438,377	\$2,206,961	2.36	1.46	\$31,300
Arizona	\$27,335,946	\$22,485,875	\$11,828,933	1.43	0.32	\$7,000
Arkansas	\$9,849,713	\$7,946,802	\$5,633,962	2.37	0.78	\$10,000
California	\$199,327,336	\$159,717,923	\$66,368,636	4.09	0.71	\$7,000
Colorado	\$26,557,786	\$22,616,117	\$13,015,171	1.70	0.46	\$10,000
Connecticut	\$27,080,864	\$22,206,896	\$11,586,023	2.59	0.69	\$15,000
Delaware	\$5,273,574	\$4,262,800	\$2,314,900	2.00	0.45	\$10,500
District of Columbia	\$9,037,718	\$7,409,395	\$2,856,405	2.03	0.32	\$9,000
Florida	\$77,760,039	\$64,095,282	\$34,604,974	1.41	0.32	\$7,000
Georgia	\$43,150,612	\$36,409,876	\$19,735,885	1.52	0.36	\$8,500
Hawaii	\$5,813,364	\$4,446,458	\$3,451,230	0.80	0.52	\$13,000
Idaho	\$5,138,966	\$4,172,150	\$3,884,756	1.03	0.68	\$32,200
Illinois	\$72,221,690	\$59,879,452	\$34,288,336	3.26	0.85	\$12,000
Indiana	\$27,491,755	\$22,521,404	\$12,180,502	2.70	0.60	\$7,000
Iowa	\$13,276,361	\$10,424,187	\$9,147,899	1.57	0.84	\$22,800
Kansas	\$12,637,540	\$11,659,644	\$7,306,520	1.44	0.48	\$8,000
Kentucky	\$16,066,481	\$12,798,747	\$7,848,354	2.75	0.71	\$8,000
Louisiana	\$18,200,327	\$14,691,618	\$7,825,675	1.41	0.33	\$7,000
Maine	\$5,106,319	\$3,766,408	\$2,885,044	1.70	0.63	\$12,000
Maryland	\$28,964,785	\$22,718,432	\$11,771,927	1.74	0.38	\$8,500
Massachusetts	\$46,678,277	\$38,226,749	\$22,083,335	3.45	1.01	\$14,000
Michigan	\$44,432,037	\$35,186,719	\$19,775,500	4.71	1.09	\$9,000
Minnesota	\$30,714,836	\$24,230,533	\$19,116,010	1.62	0.75	\$25,000
Mississippi	\$8,985,722	\$7,098,074	\$4,503,217	1.32	0.35	\$7,000
Missouri	\$26,087,854	\$21,095,069	\$14,378,545	2.20	0.68	\$12,000
Montana	\$3,321,453	\$2,799,721	\$2,576,336	1.12	0.73	\$23,800
Nebraska	\$7,896,672	\$6,107,686	\$4,103,898	1.49	0.43	\$9,000
Nevada	\$13,535,031	\$11,662,410	\$9,948,664	1.39	0.77	\$25,400
New Hampshire	\$6,859,649	\$5,423,868	\$2,839,248	1.23	0.26	\$8,000
New Jersey	\$56,789,693	\$46,884,666	\$34,294,236	2.03	0.89	\$27,700
New Mexico	\$7,177,437	\$5,555,953	\$4,820,083	0.96	0.48	\$19,900
New York	\$153,201,610	\$125,995,505	\$38,798,382	3.45	0.55	\$8,500
North Carolina	\$40,561,920	\$33,200,969	\$25,226,890	1.84	0.81	\$18,600
North Dakota	\$2,768,096	\$2,081,187	\$1,841,140	1.05	0.58	\$22,100
Ohio	\$52,687,940	\$41,746,554	\$24,901,495	2.53	0.64	\$9,000
Oklahoma	\$13,591,659	\$11,532,800	\$8,752,432	0.95	0.37	\$13,600
Oregon	\$16,777,239	\$13,179,900	\$11,646,820	1.85	1.11	\$30,200
Pennsylvania	\$61,621,989	\$48,366,770	\$25,043,689	4.78	1.02	\$8,000
Puerto Rico	\$6,135,406	\$4,166,274	\$2,922,997	3.18	1.06	\$7,000
Rhode Island	\$4,970,367	\$3,741,189	\$2,604,402	3.35	1.21	\$14,000
South Carolina	\$16,516,973	\$13,292,831	\$7,733,621	2.12	0.51	\$7,000
South Dakota	\$3,041,825	\$2,320,897	\$1,666,939	0.87	0.27	\$9,000
Tennessee	\$26,270,979	\$21,882,804	\$11,861,508	2.04	0.44	\$7,000
Texas	\$118,833,788	\$101,847,813	\$53,220,594	1.45	0.34	\$9,000
Utah	\$10,877,056	\$8,914,277	\$7,933,179	0.78	0.45	\$26,700
Vermont	\$2,796,992	\$2,001,989	\$1,227,405	2.83	0.73	\$8,000
Virgin Islands	\$408,384	\$291,330	\$253,876	0.18	0.10	\$21,800
Virginia	\$40,521,120	\$34,111,740	\$17,143,235	1.22	0.25	\$8,000
Washington	\$32,978,505	\$26,166,337	\$23,253,731	1.84	1.06	\$34,000
West Virginia	\$5,815,474	\$4,446,698	\$2,825,718	2.75	0.77	\$8,000
Wisconsin	\$26,566,686	\$20,744,669	\$13,991,622	2.63	0.77	\$10,500
Wyoming	\$2,701,594	\$2,128,339	\$1,835,302	1.37	0.65	\$20,100
United States	\$1,543,314,180	\$1,257,687,967	\$702,662,621	2.32	0.63	\$11,570

Individual State Pages: 3rd Quarter 2008

[Data Summary Home](#)

[Data Summary Glossary](#)

[Data Summary Mailing List](#)

[OWS Homepage](#)

Click on Desired State:

Alaska	Alabama	Arkansas	Arizona	California	Colorado
Connecticut	District of Columbia	Delaware	Florida	Georgia	Hawaii
Iowa	Idaho	Illinois	Indiana	Kansas	Kentucky
Louisiana	Massachusetts	Maryland	Maine	Michigan	Minnesota
Missouri	Mississippi	Montana	North Carolina	North Dakota	Nebraska
New Hampshire	New Jersey	New Mexico	Nevada	New York	Ohio
Oklahoma	Oregon	Pennsylvania	Puerto Rico	Rhode Island	South Carolina
South Dakota	Tennessee	Texas	Utah	Virginia	Virgin Islands
Vermont	Washington	Wisconsin	West Virginia	Wyoming	United States

Note: Blank cells appearing in any section of this report indicates that information is unavailable.

UI Data Summary for **Alabama**

CYQ: 2008.3

Benefits	(Quarterly)	Past 12 Months	Rank	High Value : Qtr		Low Value : Qtr	
Benefits Paid (000):	\$81,848	\$272,566	28	\$87,642	2002.1	\$7,540	1973.3
Initial Claims:	75,288	271,194	23	199,272	1982.1	27,174	1973.2
First Payments:	34,200	118,038	20	87,774	1982.1	11,594	1973.2
Weeks Claimed:	460,065	1,620,803	28	1,008,116	1983.1	202,249	1973.2
Wks Compensated:	425,362	1,431,792	28	843,002	1983.1	163,877	1973.4
Exhaustions:	10,159	32,552	27	23,814	1983.1	3,671	1973.4
Exhaustion Rate:		30.9%	43	35.6%	1983.3	17.4%	1990.3
Average Duration:		12.1	49	14.2	1983.2	9.2	1995.4
AWBA:	\$194.54	\$192.95	51	\$194.64	2008.2	\$40.78	1971.2
As % of AWW:	27.4		48				
Avg. Benefits per First Payment:		\$2,309					

Financial Information	Past 12 Months	Rank
State Revenues (000):	\$231,358	30
Total Wages (000)**:	\$17,785,681	25
Total Wages (Taxable Employers)(000)**:	\$14,587,804	25
Taxable Wages (000)**:	\$8,796,478	30
Avg. Weekly Wage**:	\$711.38	34
Avg. Tax Rate on Taxable Wages (%) **:	1.43	36
Avg. Tax Rate on Total Wages (%) **:	0.37	42
Calendar Yr Taxable Wage Base:	\$8,000	41
Trust Fund (TF) Balance (000):		
(Including Loans):	\$395,511	33
TF as % of Total Wages*:	0.67	36
Interest Earned (000):	\$4,984	33
Avg. High Cost Multiple +:	0.52	31
High Cost Multiple +:	0.33	33

Labor Force	(Quarterly)	Past 12 Mos	Rank
IUR (%):	2.0	1.7	32
TUR (%):	5.4	4.3	27
Total Unemp. (000):	117.3	95.2	27
Insured Unemployed (000) ***			
Regular Programs:	37.2	32.6	28
All Programs:	50.3	35.9	25
Reciency Rates (%) ***			
Regular Programs:	32	34	25
All Programs:	43	38	27
Covered Emp. (000)**:	1,888	1,901	23
Civ. Labor Force (000):	2,184	2,194	23
Subj. Employers (000):	90	91	27

Extended Benefits	(Quarterly)	Past 12 Months
Extended Benefits (000):	\$0	\$0
EB First Payments:	0	0
EB Weeks Claimed:	0	0
EB Exhaustions:	0	0

Loans	Rank
Outstanding Loan Bal (000):	\$0 2
Loan per Cov Employee:	\$0 2
Loan as % of Total Wages*:	0 2

* Based on extrapolated wages for the most recent 12 months.

** Wages and Covered Employment lag the rest of the Data Summary information by six months

*** Regular programs include State UI, UCFE and UCX.

+ Refers to most recent calendar year. Fourth and first quarter issues publish measure based on extrapolated wages. Second and third quarter issues publish measure based on actual wages.

See glossary for data definitions

Note: Blank cells appearing in any section of this report indicates that information is unavailable.

UI Data Summary for **Alaska**

CYQ: 2008.3

Benefits	(Quarterly)	Past 12 Months	Rank	High Value : Qtr		Low Value : Qtr	
Benefits Paid (000):	\$18,292	\$110,114	48	\$44,533	2004.1	\$1,663	1971.3
Initial Claims:	18,471	90,545	40	30,954	1996.1	6,230	1973.2
First Payments:	6,119	39,038	46	19,617	1977.1	2,132	1971.3
Weeks Claimed:	113,954	649,052	46	244,721	1986.1	39,062	1971.3
Wks Compensated:	93,585	556,854	47	321,508	1977.1	36,386	1971.3
Exhaustions:	2,922	15,428	42	9,445	1986.2	937	1971.3
Exhaustion Rate:		40.7%	18	56.9%	1986.4	20.2%	1976.3
Average Duration:		14.3	27	19.9	1978.1	14.1	2002.2
AWBA:	\$200.02	\$201.79	50	\$203.39	2007.4	\$46.09	1971.3
As % of AWW:	24.1		51				
Avg. Benefits per First Payment:		\$2,821					

Financial Information	Past 12 Months	Rank
State Revenues (000):	\$136,779	38
Total Wages (000)**:	\$3,113,059	48
Total Wages (Taxable Employers)(000)**:	\$2,438,377	48
Taxable Wages (000)**:	\$2,206,961	41
Avg. Weekly Wage**:	\$831.66	17
Avg. Tax Rate on Taxable Wages (%) **:	2.36	17
Avg. Tax Rate on Total Wages (%) **:	1.46	1
Calendar Yr Taxable Wage Base:	\$31,300	3
Trust Fund (TF) Balance (000):		
(Including Loans):	\$346,883	34
TF as % of Total Wages*:	3.35	3
Interest Earned (000):	\$4,065	35
Avg. High Cost Multiple +:	1.07	16
High Cost Multiple +:	0.77	13

Labor Force	(Quarterly)	Past 12 Mos	Rank
IUR (%):	2.7	3.8	13
TUR (%):	6.0	6.6	19
Total Unemp. (000):	22.1	23.6	46
Insured Unemployed (000) ***			
Regular Programs:	8.1	11.2	46
All Programs:	10.4	11.9	46
Reciency Rates (%) ***			
Regular Programs:	37	48	15
All Programs:	47	51	18
Covered Emp. (000)**:	283	295	51
Civ. Labor Force (000):	366	357	49
Subj. Employers (000):	17	17	52

Extended Benefits	(Quarterly)	Past 12 Months
Extended Benefits (000):	\$3,109	\$3,812
EB First Payments:	1,895	3,375
EB Weeks Claimed:	17,412	23,569
EB Exhaustions:	999	999

Loans	Rank
Outstanding Loan Bal (000):	\$0 2
Loan per Cov Employee:	\$0 2
Loan as % of Total Wages*:	0 2

* Based on extrapolated wages for the most recent 12 months.

** Wages and Covered Employment lag the rest of the Data Summary information by six months

*** Regular programs include State UI, UCFE and UCX.

+ Refers to most recent calendar year. Fourth and first quarter issues publish measure based on extrapolated wages. Second and third quarter issues publish measure based on actual wages.

See glossary for data definitions

Note: Blank cells appearing in any section of this report indicates that information is unavailable.

UI Data Summary for Arizona

CYQ: 2008.3

Benefits	(Quarterly)	Past 12 Months	Rank	High Value : Qtr		Low Value : Qtr	
<u>Benefits Paid (000):</u>	\$122,486	\$370,119	25	\$122,486	2008.3	\$4,271	1972.2
<u>Initial Claims:</u>	71,236	240,255	24	73,262	2003.2	19,869	1973.2
<u>First Payments:</u>	33,894	113,761	21	34,734	2003.2	6,115	1972.2
<u>Weeks Claimed:</u>	665,869	2,027,742	18	684,378	2003.3	109,406	1972.3
<u>Wks Compensated:</u>	576,290	1,739,624	19	586,784	2002.3	82,840	1972.3
<u>Exhaustions:</u>	15,756	43,344	16	17,598	2003.3	1,807	1978.4
<u>Exhaustion Rate:</u>		46.9%	7	50.4%	1975.4	22.0%	1980.1
<u>Average Duration:</u>		15.3	17	18.4	1983.3	10.7	1980.1
<u>AWBA:</u>	\$214.86	\$215.21	48	\$219.72	2008.1	\$45.53	1971.2
As % of AWW:	27.0		49				
<u>Avg. Benefits per First Payment:</u>		\$3,253					

Financial Information	Past 12 Months	Rank
<u>State Revenues (000):</u>	\$290,273	27
<u>Total Wages (000)**:</u>	\$27,335,946	18
<u>Total Wages (Taxable Employers)(000)**:</u>	\$22,485,875	19
<u>Taxable Wages (000)**:</u>	\$11,828,933	24
<u>Avg. Weekly Wage**:</u>	\$796.28	21
<u>Avg. Tax Rate on Taxable Wages (%) **:</u>	1.43	37
<u>Avg. Tax Rate on Total Wages (%) **:</u>	0.32	48
<u>Calendar Yr Taxable Wage Base:</u>	\$7,000	49
<u>Trust Fund (TF) Balance (000):</u>		
(Including Loans):	\$964,520	11
<u>TF as % of Total Wages*:</u>	1.08	23
<u>Interest Earned (000):</u>	\$11,928	11
<u>Avg. High Cost Multiple +:</u>	1.12	14
<u>High Cost Multiple +:</u>	0.45	26

Labor Force	(Quarterly)	Past 12 Mos	Rank
<u>IUR (%):</u>	2.1	1.6	27
<u>TUR (%):</u>	5.8	4.6	21
<u>Total Unemp. (000):</u>	180.1	140.6	17
Insured Unemployed (000) ***			
<u>Regular Programs:</u>	53.6	41.0	19
<u>All Programs:</u>	67.9	44.6	20
Reciency Rates (%) ***			
<u>Regular Programs:</u>	30	29	30
<u>All Programs:</u>	38	32	32
<u>Covered Emp. (000)**:</u>	2,583	2,591	20
<u>Civ. Labor Force (000):</u>	3,116	3,078	16
<u>Subj. Employers (000):</u>	124	132	21

Extended Benefits	(Quarterly)	Past 12 Months
<u>Extended Benefits (000):</u>	\$0	\$0
EB First Payments:	0	0
EB Weeks Claimed:	0	0
EB Exhaustions:	0	0

Loans	Rank
<u>Outstanding Loan Bal (000):</u>	\$0 2
Loan per Cov Employee:	\$0 2
Loan as % of Total Wages*:	0 2

* Based on extrapolated wages for the most recent 12 months.

** Wages and Covered Employment lag the rest of the Data Summary information by six months

*** Regular programs include State UI, UCFE and UCX.

+ Refers to most recent calendar year. Fourth and first quarter issues publish measure based on extrapolated wages. Second and third quarter issues publish measure based on actual wages.

See glossary for data definitions

Note: Blank cells appearing in any section of this report indicates that information is unavailable.

UI Data Summary for **Arkansas**

CYQ: 2008.3

Benefits	(Quarterly)	Past 12 Months	Rank	High Value : Qtr		Low Value : Qtr	
Benefits Paid (000):	\$78,652	\$311,176	29	\$93,583	2002.1	\$3,532	1972.3
Initial Claims:	52,465	223,320	30	103,999	1981.4	20,162	1972.2
First Payments:	20,817	91,395	30	52,817	1975.1	7,104	1973.2
Weeks Claimed:	409,756	1,615,637	29	724,967	1975.1	116,813	1973.3
Wks Compensated:	316,586	1,245,653	29	557,933	1975.1	82,739	1973.3
Exhaustions:	7,820	30,736	30	13,071	1975.2	1,808	1973.4
Exhaustion Rate:		36.4%	31	40.9%	2003.2	21.6%	1986.2
Average Duration:		13.6	38	16.1	1976.1	9.8	1974.4
AWBA:	\$261.11	\$263.32	38	\$265.84	2008.2	\$39.54	1971.1
As % of AWW:	39.9		15				
Avg. Benefits per First Payment:		\$3,405					

Financial Information	Past 12 Months	Rank
State Revenues (000):	\$263,264	29
Total Wages (000)**:	\$9,849,713	34
Total Wages (Taxable Employers)(000)**:	\$7,946,802	34
Taxable Wages (000)**:	\$5,633,962	37
Avg. Weekly Wage**:	\$653.92	46
Avg. Tax Rate on Taxable Wages (%) **:	2.37	16
Avg. Tax Rate on Total Wages (%) **:	0.78	13
Calendar Yr Taxable Wage Base:	\$10,000	27
Trust Fund (TF) Balance (000):		
(Including Loans):	\$151,276	45
TF as % of Total Wages*:	0.46	41
Interest Earned (000):	\$1,982	44
Avg. High Cost Multiple +:	0.32	41
High Cost Multiple +:	0.18	45

Labor Force	(Quarterly)	Past 12 Mos	Rank
IUR (%):	2.8	2.8	12
TUR (%):	4.7	5.1	35
Total Unemp. (000):	64.7	70.2	35
Insured Unemployed (000) ***			
Regular Programs:	32.3	31.8	29
All Programs:	41.4	34.1	29
Reciency Rates (%) ***			
Regular Programs:	50	45	5
All Programs:	64	49	5
Covered Emp. (000)**:	1,149	1,154	34
Civ. Labor Force (000):	1,386	1,374	34
Subj. Employers (000):	65	67	33

Extended Benefits	(Quarterly)	Past 12 Months
Extended Benefits (000):	\$0	\$0
EB First Payments:	0	0
EB Weeks Claimed:	0	0
EB Exhaustions:	0	0

Loans	Rank
Outstanding Loan Bal (000):	\$0 2
Loan per Cov Employee:	\$0 2
Loan as % of Total Wages*:	0 2

* Based on extrapolated wages for the most recent 12 months.

** Wages and Covered Employment lag the rest of the Data Summary information by six months

*** Regular programs include State UI, UCFE and UCX.

+ Refers to most recent calendar year. Fourth and first quarter issues publish measure based on extrapolated wages. Second and third quarter issues publish measure based on actual wages.

See glossary for data definitions

Note: Blank cells appearing in any section of this report indicates that information is unavailable.

UI Data Summary for California

CYQ: 2008.3

Benefits	(Quarterly)	Past 12 Months	Rank	High Value : Qtr		Low Value : Qtr	
Benefits Paid (000):	\$1,635,490	\$6,153,814	1	\$1,635,490	2008.3	\$125,689	1973.3
Initial Claims:	726,576	2,729,675	1	1,073,146	1992.1	404,986	1973.2
First Payments:	332,102	1,240,368	1	469,351	1975.1	152,420	1973.2
Weeks Claimed:	6,423,347	24,092,843	1	8,150,226	1992.1	2,522,143	1973.3
Wks Compensated:	5,545,346	20,837,589	1	7,410,743	1992.1	2,184,142	1973.3
Exhaustions:	144,658	518,910	1	184,303	2002.3	48,106	1973.4
Exhaustion Rate:		48.0%	5	50.1%	2003.2	23.7%	1979.2
Average Duration:		16.8	10	18.7	1983.4	12.4	1979.1
AWBA:	\$306.33	\$306.09	14	\$307.65	2008.1	\$53.87	1971.3
As % of AWW:	31.5		41				
Avg. Benefits per First Payment:		\$4,961					

Financial Information	Past 12 Months	Rank
State Revenues (000):	\$4,869,746	1
Total Wages (000)**:	\$199,327,336	1
Total Wages (Taxable Employers)(000)**:	\$159,717,923	1
Taxable Wages (000)**:	\$66,368,636	1
Avg. Weekly Wage**:	\$973.23	6
Avg. Tax Rate on Taxable Wages (%) **:	4.09	3
Avg. Tax Rate on Total Wages (%) **:	0.71	20
Calendar Yr Taxable Wage Base:	\$7,000	49
Trust Fund (TF) Balance (000):		
(Including Loans):	\$1,785,177	4
TF as % of Total Wages*:	0.28	47
Interest Earned (000):	\$27,439	2
Avg. High Cost Multiple +:	0.27	45
High Cost Multiple +:	0.18	45

Labor Force	(Quarterly)	Past 12 Mos	Rank
IUR (%):	3.2	3.0	7
TUR (%):	7.6	6.5	5
Total Unemp. (000):	1,405.3	1,196.7	1
Insured Unemployed (000) ***			
Regular Programs:	492.4	462.3	1
All Programs:	610.8	491.8	1
Reciency Rates (%) ***			
Regular Programs:	35	39	18
All Programs:	43	41	25
Covered Emp. (000)**:	15,239	15,409	1
Civ. Labor Force (000):	18,522	18,372	1
Subj. Employers (000):	1,119	1,172	1

Extended Benefits	(Quarterly)	Past 12 Months
Extended Benefits (000):	\$0	\$0
EB First Payments:	0	0
EB Weeks Claimed:	0	0
EB Exhaustions:	0	0

Loans	Rank
Outstanding Loan Bal (000):	\$0 2
Loan per Cov Employee:	\$0 2
Loan as % of Total Wages*:	0 2

* Based on extrapolated wages for the most recent 12 months.

** Wages and Covered Employment lag the rest of the Data Summary information by six months

*** Regular programs include State UI, UCFE and UCX.

+ Refers to most recent calendar year. Fourth and first quarter issues publish measure based on extrapolated wages. Second and third quarter issues publish measure based on actual wages.

See glossary for data definitions

Note: Blank cells appearing in any section of this report indicates that information is unavailable.

UI Data Summary for Colorado

CYQ: 2008.3

Benefits	(Quarterly)	Past 12 Months	Rank	<u>High Value : Qtr</u>		<u>Low Value : Qtr</u>	
Benefits Paid (000):	\$92,227	\$358,584	27	\$153,005	2002.1	\$2,261	1972.3
Initial Claims:	33,959	135,352	34	68,252	1983.1	11,717	1972.3
First Payments:	19,086	80,083	31	37,139	1983.1	3,945	1972.3
Weeks Claimed:	346,914	1,356,663	31	671,262	1983.1	66,570	1972.3
Wks Compensated:	274,854	1,075,744	30	525,948	1983.1	37,409	1972.3
Exhaustions:	9,169	31,785	28	17,442	2002.2	828	1972.4
Exhaustion Rate:		43.9%	11	62.4%	1976.1	24.4%	1978.4
Average Duration:		13.4	42	16.7	1975.3	9.7	1974.1
AWBA:	\$339.71	\$337.63	6	\$339.71	2008.3	\$58.64	1971.3
As % of AWW:	38.9		23				
Avg. Benefits per First Payment:		\$4,478					

Financial Information	Past 12 Months	Rank
State Revenues (000):	\$415,479	20
Total Wages (000)**:	\$26,557,786	22
Total Wages (Taxable Employers)(000)**:	\$22,616,117	17
Taxable Wages (000)**:	\$13,015,171	20
Avg. Weekly Wage**:	\$872.40	10
Avg. Tax Rate on Taxable Wages (%) **:	1.70	28
Avg. Tax Rate on Total Wages (%) **:	0.46	35
Calendar Yr Taxable Wage Base:	\$10,000	27
Trust Fund (TF) Balance (000):		
(Including Loans):	\$699,891	21
TF as % of Total Wages*:	0.78	32
Interest Earned (000):	\$8,502	20
Avg. High Cost Multiple +:	0.67	29
High Cost Multiple +:	0.59	22

Labor Force	(Quarterly)	Past 12 Mos	Rank
IUR (%):	1.2	1.2	45
TUR (%):	5.1	4.6	30
Total Unemp. (000):	141.3	127.5	23
Insured Unemployed (000) ***			
Regular Programs:	27.4	26.7	31
All Programs:	38.6	29.5	30
Reciency Rates (%) ***			
Regular Programs:	19	21	51
All Programs:	27	23	49
Covered Emp. (000)**:	2,237	2,252	22
Civ. Labor Force (000):	2,774	2,754	22
Subj. Employers (000):	152	157	15

Extended Benefits	(Quarterly)	Past 12 Months
Extended Benefits (000):	\$0	\$0
EB First Payments:	0	0
EB Weeks Claimed:	0	0
EB Exhaustions:	0	0

Loans	Rank
Outstanding Loan Bal (000):	2
Loan per Cov Employee:	2
Loan as % of Total Wages*:	2

* Based on extrapolated wages for the most recent 12 months.

** Wages and Covered Employment lag the rest of the Data Summary information by six months

*** Regular programs include State UI, UCFE and UCX.

+ Refers to most recent calendar year. Fourth and first quarter issues publish measure based on extrapolated wages. Second and third quarter issues publish measure based on actual wages.

See glossary for data definitions

Note: Blank cells appearing in any section of this report indicates that information is unavailable.

UI Data Summary for **Connecticut**

CYQ: 2008.3

Benefits	(Quarterly)	Past 12 Months	Rank	High Value : Qtr		Low Value : Qtr	
Benefits Paid (000):	\$174,729	\$661,743	17	\$232,930	2003.1	\$23,568	1973.4
Initial Claims:	59,572	240,209	28	158,726	1975.1	33,893	1988.2
First Payments:	32,328	134,179	22	92,026	1975.1	14,892	1987.2
Weeks Claimed:	627,584	2,308,124	21	1,196,204	1975.1	194,676	1987.4
Wks Compensated:	588,824	2,179,349	18	1,157,832	1975.2	191,037	1987.4
Exhaustions:	12,665	41,798	21	26,941	1975.3	2,849	1980.1
Exhaustion Rate:		34.3%	34	40.1%	1993.3	12.3%	1979.2
Average Duration:		16.2	14	18.7	1992.4	10.2	1974.1
AWBA:	\$310.80	\$318.30	10	\$325.37	2008.1	\$61.34	1971.3
As % of AWW:	27.9		47				
Avg. Benefits per First Payment:		\$4,932					

Financial Information	Past 12 Months	Rank
State Revenues (000):	\$565,401	17
Total Wages (000)**:	\$27,080,864	23
Total Wages (Taxable Employers)(000)**:	\$22,206,896	20
Taxable Wages (000)**:	\$11,586,023	23
Avg. Weekly Wage**:	\$1,114.45	3
Avg. Tax Rate on Taxable Wages (%) **:	2.59	14
Avg. Tax Rate on Total Wages (%) **:	0.69	22
Calendar Yr Taxable Wage Base:	\$15,000	16
Trust Fund (TF) Balance (000):		
(Including Loans):	\$566,678	24
TF as % of Total Wages*:	0.72	34
Interest Earned (000):	\$7,148	23
Avg. High Cost Multiple +:	0.54	30
High Cost Multiple +:	0.23	42

Labor Force	(Quarterly)	Past 12 Mos	Rank
IUR (%):	2.8	2.6	11
TUR (%):	6.2	5.3	17
Total Unemp. (000):	117.6	100.2	26
Insured Unemployed (000) ***			
Regular Programs:	47.1	43.3	23
All Programs:	63.7	47.4	22
Reciency Rates (%) ***			
Regular Programs:	40	43	10
All Programs:	54	47	8
Covered Emp. (000)**:	1,657	1,671	28
Civ. Labor Force (000):	1,909	1,885	28
Subj. Employers (000):	98	99	26

Extended Benefits	(Quarterly)	Past 12 Months
Extended Benefits (000):	\$0	\$0
EB First Payments:	0	0
EB Weeks Claimed:	0	0
EB Exhaustions:	0	0

Loans	Rank
Outstanding Loan Bal (000):	\$0 2
Loan per Cov Employee:	\$0 2
Loan as % of Total Wages*:	0 2

* Based on extrapolated wages for the most recent 12 months.

** Wages and Covered Employment lag the rest of the Data Summary information by six months

*** Regular programs include State UI, UCFE and UCX.

+ Refers to most recent calendar year. Fourth and first quarter issues publish measure based on extrapolated wages. Second and third quarter issues publish measure based on actual wages.

See glossary for data definitions

Note: Blank cells appearing in any section of this report indicates that information is unavailable.

UI Data Summary for Delaware

CYQ: 2008.3

Benefits	(Quarterly)	Past 12 Months	Rank	High Value : Qtr		Low Value : Qtr	
<u>Benefits Paid (000):</u>	\$31,003	\$116,741	42	\$37,777	2003.1	\$1,884	1972.4
<u>Initial Claims:</u>	15,629	65,086	43	27,988	1974.4	6,192	1973.2
<u>First Payments:</u>	7,012	26,528	43	17,084	1975.1	2,130	1987.2
<u>Weeks Claimed:</u>	134,909	498,567	42	217,510	1975.1	27,787	1987.4
<u>Wks Compensated:</u>	123,713	460,102	43	225,281	1975.1	26,548	1987.4
<u>Exhaustions:</u>	2,735	8,957	44	5,341	1975.2	256	1988.2
<u>Exhaustion Rate:</u>		36.5%	30	44.8%	1976.1	10.5%	1989.3
<u>Average Duration:</u>		17.3	6	19.1	1976.1	9.7	1986.1
<u>AWBA:</u>	\$255.60	\$255.55	39	\$258.02	2007.1	\$50.54	1971.4
As % of AWW:	28.2		46				
<u>Avg. Benefits per First Payment:</u>		\$4,401					

Financial Information	Past 12 Months	Rank
<u>State Revenues (000):</u>	\$84,202	45
<u>Total Wages (000)**:</u>	\$5,273,574	45
<u>Total Wages (Taxable Employers)(000)**:</u>	\$4,262,800	42
<u>Taxable Wages (000)**:</u>	\$2,314,900	50
<u>Avg. Weekly Wage**:</u>	\$908.05	8
<u>Avg. Tax Rate on Taxable Wages (%) **:</u>	2.00	23
<u>Avg. Tax Rate on Total Wages (%) **:</u>	0.45	36
<u>Calendar Yr Taxable Wage Base:</u>	\$10,500	25
<u>Trust Fund (TF) Balance (000):</u>		
(Including Loans):	\$153,778	44
<u>TF as % of Total Wages*:</u>	0.96	25
<u>Interest Earned (000):</u>	\$1,917	45
<u>Avg. High Cost Multiple +:</u>	0.90	23
<u>High Cost Multiple +:</u>	0.42	29

Labor Force	(Quarterly)	Past 12 Mos	Rank
<u>IUR (%):</u>	2.5	2.3	17
<u>TUR (%):</u>	4.7	4.0	34
<u>Total Unemp. (000):</u>	21.2	17.9	47
Insured Unemployed (000) ***			
<u>Regular Programs:</u>	10.4	9.6	42
<u>All Programs:</u>	13.2	10.3	43
Reciency Rates (%) ***			
<u>Regular Programs:</u>	49	54	6
<u>All Programs:</u>	62	58	6
<u>Covered Emp. (000)**:</u>	411	419	47
<u>Civ. Labor Force (000):</u>	448	446	47
<u>Subj. Employers (000):</u>	26	27	47

Extended Benefits	(Quarterly)	Past 12 Months
<u>Extended Benefits (000):</u>	\$0	\$0
EB First Payments:	0	0
EB Weeks Claimed:	0	0
EB Exhaustions:	0	0

Loans	Rank
<u>Outstanding Loan Bal (000):</u>	\$0 2
Loan per Cov Employee:	\$0 2
Loan as % of Total Wages*:	0 2

* Based on extrapolated wages for the most recent 12 months.

** Wages and Covered Employment lag the rest of the Data Summary information by six months

*** Regular programs include State UI, UCFE and UCX.

+ Refers to most recent calendar year. Fourth and first quarter issues publish measure based on extrapolated wages. Second and third quarter issues publish measure based on actual wages.

See glossary for data definitions

Note: Blank cells appearing in any section of this report indicates that information is unavailable.

UI Data Summary for District of Columbia

CYQ: 2008.3

Benefits	(Quarterly)	Past 12 Months	Rank	High Value : Qtr		Low Value : Qtr	
<u>Benefits Paid (000):</u>	\$44,881	\$118,342	38	\$44,881	2008.3	\$4,732	1971.4
<u>Initial Claims:</u>	9,334	32,329	48	15,303	1975.2	3,624	2005.4
<u>First Payments:</u>	5,907	19,076	47	11,131	1975.3	2,779	2003.2
<u>Weeks Claimed:</u>	114,571	413,997	45	205,018	1975.3	48,862	2006.2
<u>Wks Compensated:</u>	157,488	416,858	37	201,986	1975.3	66,758	2000.4
<u>Exhaustions:</u>	2,813	10,240	43	5,220	1991.3	1,310	1971.1
<u>Exhaustion Rate:</u>		58.9%	1	93.7%	2003.2	37.4%	1979.2
<u>Average Duration:</u>		21.9	1	32.6	2003.2	15.7	2001.4
<u>AWBA:</u>	\$288.99	\$289.77	27	\$314.28	2002.1	\$57.77	1971.1
As % of AWW:	21.7		53				
<u>Avg. Benefits per First Payment:</u>		\$6,204					

Financial Information	Past 12 Months	Rank
<u>State Revenues (000):</u>	\$110,751	39
<u>Total Wages (000)**:</u>	\$9,037,718	36
<u>Total Wages (Taxable Employers)(000)**:</u>	\$7,409,395	35
<u>Taxable Wages (000)**:</u>	\$2,856,405	48
<u>Avg. Weekly Wage**:</u>	\$1,332.80	1
<u>Avg. Tax Rate on Taxable Wages (%) **:</u>	2.03	22
<u>Avg. Tax Rate on Total Wages (%) **:</u>	0.32	47
<u>Calendar Yr Taxable Wage Base:</u>	\$9,000	31
<u>Trust Fund (TF) Balance (000):</u>		
(Including Loans):	\$423,003	31
<u>TF as % of Total Wages*:</u>	1.48	18
<u>Interest Earned (000):</u>	\$5,099	32
<u>Avg. High Cost Multiple +:</u>	1.10	15
<u>High Cost Multiple +:</u>	0.79	12

Labor Force	(Quarterly)	Past 12 Mos	Rank
<u>IUR (%):</u>	1.1	1.0	48
<u>TUR (%):</u>	7.1	6.3	8
<u>Total Unemp. (000):</u>	23.9	20.9	45
<u>Insured Unemployed (000) ***</u>			
<u>Regular Programs:</u>	5.5	4.9	49
<u>All Programs:</u>	7.9	5.6	48
<u>Reciency Rates (%) ***</u>			
<u>Regular Programs:</u>	23	24	47
<u>All Programs:</u>	33	27	43
<u>Covered Emp. (000)**:</u>	485	488	44
<u>Civ. Labor Force (000):</u>	336	331	51
<u>Subj. Employers (000):</u>	28	28	46

Extended Benefits	(Quarterly)	Past 12 Months
<u>Extended Benefits (000):</u>	\$0	\$0
EB First Payments:	0	0
EB Weeks Claimed:	0	0
EB Exhaustions:	0	0

Loans	Rank
<u>Outstanding Loan Bal (000):</u>	\$0 2
Loan per Cov Employee:	\$0 2
Loan as % of Total Wages*:	0 2

* Based on extrapolated wages for the most recent 12 months.

** Wages and Covered Employment lag the rest of the Data Summary information by six months

*** Regular programs include State UI, UCFE and UCX.

+ Refers to most recent calendar year. Fourth and first quarter issues publish measure based on extrapolated wages. Second and third quarter issues publish measure based on actual wages.

See glossary for data definitions

Note: Blank cells appearing in any section of this report indicates that information is unavailable.

UI Data Summary for Florida

CYQ: 2008.3

Benefits	(Quarterly)	Past 12 Months	Rank	High Value : Qtr		Low Value : Qtr	
<u>Benefits Paid (000):</u>	\$503,841	\$1,588,078	5	\$503,841	2008.3	\$7,873	1973.2
<u>Initial Claims:</u>	252,928	819,515	5	252,928	2008.3	47,634	1972.4
<u>First Payments:</u>	140,015	439,961	2	140,015	2008.3	13,559	1973.1
<u>Weeks Claimed:</u>	2,558,205	7,942,013	3	2,558,205	2008.3	290,942	1973.2
<u>Wks Compensated:</u>	2,153,417	6,717,639	3	2,153,417	2008.3	161,460	1973.1
<u>Exhaustions:</u>	62,539	191,475	2	62,539	2008.3	5,076	1973.2
<u>Exhaustion Rate:</u>		53.0%	3	62.4%	1975.2	33.8%	1984.3
<u>Average Duration:</u>		15.3	18	16.4	1993.1	10.5	1974.1
<u>AWBA:</u>	\$236.29	\$238.96	44	\$241.15	2008.1	\$38.12	1971.1
As % of AWW:	31.1		42				
<u>Avg. Benefits per First Payment:</u>		\$3,610					

Financial Information	Past 12 Months	Rank
<u>State Revenues (000):</u>	\$849,082	12
<u>Total Wages (000)**:</u>	\$77,760,039	4
<u>Total Wages (Taxable Employers)(000)**:</u>	\$64,095,282	4
<u>Taxable Wages (000)**:</u>	\$34,604,974	7
<u>Avg. Weekly Wage**:</u>	\$761.04	24
<u>Avg. Tax Rate on Taxable Wages (%) **:</u>	1.41	39
<u>Avg. Tax Rate on Total Wages (%) **:</u>	0.32	49
<u>Calendar Yr Taxable Wage Base:</u>	\$7,000	49
<u>Trust Fund (TF) Balance (000):</u>		
(Including Loans):	\$1,767,806	5
<u>TF as % of Total Wages*:</u>	0.69	35
<u>Interest Earned (000):</u>	\$23,188	4
<u>Avg. High Cost Multiple +:</u>	1.05	17
<u>High Cost Multiple +:</u>	0.46	24

Labor Force	(Quarterly)	Past 12 Mos	Rank
<u>IUR (%):</u>	2.6	2.0	16
<u>TUR (%):</u>	6.7	5.3	13
<u>Total Unemp. (000):</u>	630.9	487.5	2
Insured Unemployed (000) ***			
<u>Regular Programs:</u>	198.8	155.4	3
<u>All Programs:</u>	270.5	173.3	3
Reciency Rates (%) ***			
<u>Regular Programs:</u>	32	32	26
<u>All Programs:</u>	43	36	26
<u>Covered Emp. (000)**:</u>	7,756	7,780	4
<u>Civ. Labor Force (000):</u>	9,397	9,259	4
<u>Subj. Employers (000):</u>	475	500	3

Extended Benefits	(Quarterly)	Past 12 Months
<u>Extended Benefits (000):</u>	\$0	\$0
EB First Payments:	0	0
EB Weeks Claimed:	0	0
EB Exhaustions:	0	0

Loans	Rank
<u>Outstanding Loan Bal (000):</u>	\$0 2
Loan per Cov Employee:	\$0 2
Loan as % of Total Wages*:	0 2

* Based on extrapolated wages for the most recent 12 months.

** Wages and Covered Employment lag the rest of the Data Summary information by six months

*** Regular programs include State UI, UCFE and UCX.

+ Refers to most recent calendar year. Fourth and first quarter issues publish measure based on extrapolated wages. Second and third quarter issues publish measure based on actual wages.

See glossary for data definitions

Note: Blank cells appearing in any section of this report indicates that information is unavailable.

UI Data Summary for Georgia

CYQ: 2008.3

Benefits	(Quarterly)	Past 12 Months	Rank	High Value : Qtr		Low Value : Qtr	
Benefits Paid (000):	\$235,452	\$795,566	12	\$235,452	2008.3	\$6,287	1972.4
Initial Claims:	173,894	599,804	10	293,875	1982.1	24,591	1973.2
First Payments:	67,775	256,728	11	157,459	1975.1	9,055	1973.2
Weeks Claimed:	1,042,611	3,676,723	12	1,526,729	1975.1	182,945	1972.4
Wks Compensated:	890,908	3,038,954	12	1,376,688	1975.1	137,491	1972.4
Exhaustions:	29,432	94,075	10	47,966	1975.2	4,870	1972.4
Exhaustion Rate:		41.9%	16	54.9%	1975.2	19.6%	1990.3
Average Duration:		11.8	51	14.1	1976.1	8.2	1986.2
AWBA:	\$270.86	\$269.57	33	\$272.46	2008.2	\$43.29	1971.1
As % of AWW:	33.7		36				
Avg. Benefits per First Payment:		\$3,099					

Financial Information	Past 12 Months	Rank
State Revenues (000):	\$519,012	19
Total Wages (000)**:	\$43,150,612	11
Total Wages (Taxable Employers)(000)**:	\$36,409,876	10
Taxable Wages (000)**:	\$19,735,885	13
Avg. Weekly Wage**:	\$803.77	20
Avg. Tax Rate on Taxable Wages (%) **:	1.52	32
Avg. Tax Rate on Total Wages (%) **:	0.36	43
Calendar Yr Taxable Wage Base:	\$8,500	35
Trust Fund (TF) Balance (000):		
(Including Loans):	\$1,151,446	10
TF as % of Total Wages*:	0.81	28
Interest Earned (000):	\$14,446	10
Avg. High Cost Multiple +:	0.98	20
High Cost Multiple +:	0.43	28

Labor Force	(Quarterly)	Past 12 Mos	Rank
IUR (%):	2.1	1.9	25
TUR (%):	6.4	5.4	16
Total Unemp. (000):	314.7	263.2	9
Insured Unemployed (000) ***			
Regular Programs:	84.3	74.0	12
All Programs:	124.2	84.0	11
Reciency Rates (%) ***			
Regular Programs:	27	28	39
All Programs:	39	32	31
Covered Emp. (000)**:	3,956	3,985	10
Civ. Labor Force (000):	4,921	4,882	9
Subj. Employers (000):	209	216	10

Extended Benefits	(Quarterly)	Past 12 Months
Extended Benefits (000):	\$0	\$0
EB First Payments:	0	0
EB Weeks Claimed:	0	0
EB Exhaustions:	0	0

Loans	Rank
Outstanding Loan Bal (000):	\$0 2
Loan per Cov Employee:	\$0 2
Loan as % of Total Wages*:	0 2

* Based on extrapolated wages for the most recent 12 months.

** Wages and Covered Employment lag the rest of the Data Summary information by six months

*** Regular programs include State UI, UCFE and UCX.

+ Refers to most recent calendar year. Fourth and first quarter issues publish measure based on extrapolated wages. Second and third quarter issues publish measure based on actual wages.

See glossary for data definitions

Note: Blank cells appearing in any section of this report indicates that information is unavailable.

UI Data Summary for Hawaii

CYQ: 2008.3

Benefits	(Quarterly)	Past 12 Months	Rank	High Value : Qtr		Low Value : Qtr	
<u>Benefits Paid (000):</u>	\$59,771	\$180,008	33	\$59,771	2008.3	\$6,426	1972.3
<u>Initial Claims:</u>	23,632	80,391	37	35,479	2001.4	10,200	1990.3
<u>First Payments:</u>	9,729	32,778	38	18,185	2001.4	4,105	1989.4
<u>Weeks Claimed:</u>	169,877	522,536	38	241,177	1976.1	57,623	1989.4
<u>Wks Compensated:</u>	146,888	450,347	39	224,118	1976.1	51,372	1989.4
<u>Exhaustions:</u>	2,299	6,920	46	5,073	1976.3	728	1989.4
<u>Exhaustion Rate:</u>		27.9%	45	43.7%	1976.4	16.3%	1990.1
<u>Average Duration:</u>		13.7	35	19.2	2002.4	11.1	1991.1
<u>AWBA:</u>	\$414.17	\$408.28	1	\$414.60	2008.2	\$63.43	1971.1
As % of AWW:	55.7		1				
<u>Avg. Benefits per First Payment:</u>		\$5,492					

Financial Information	Past 12 Months	Rank
<u>State Revenues (000):</u>	\$83,245	46
<u>Total Wages (000)**:</u>	\$5,813,364	42
<u>Total Wages (Taxable Employers)(000)**:</u>	\$4,446,458	41
<u>Taxable Wages (000)**:</u>	\$3,451,230	35
<u>Avg. Weekly Wage**:</u>	\$742.99	29
<u>Avg. Tax Rate on Taxable Wages (%) **:</u>	0.80	51
<u>Avg. Tax Rate on Total Wages (%) **:</u>	0.52	31
<u>Calendar Yr Taxable Wage Base:</u>	\$13,000	20
<u>Trust Fund (TF) Balance (000):</u>		
(Including Loans):	\$485,523	28
<u>TF as % of Total Wages*:</u>	2.68	7
<u>Interest Earned (000):</u>	\$6,023	28
<u>Avg. High Cost Multiple +:</u>	1.88	2
<u>High Cost Multiple +:</u>	1.5	2

Labor Force	(Quarterly)	Past 12 Mos	Rank
<u>IUR (%):</u>	2.1	1.7	24
<u>TUR (%):</u>	4.4	3.5	40
<u>Total Unemp. (000):</u>	29.5	22.9	43
Insured Unemployed (000) ***			
<u>Regular Programs:</u>	12.7	9.9	40
<u>All Programs:</u>	14.9	10.4	41
Reciency Rates (%) ***			
<u>Regular Programs:</u>	43	43	9
<u>All Programs:</u>	50	45	13
<u>Covered Emp. (000)**:</u>	593	595	42
<u>Civ. Labor Force (000):</u>	666	658	43
<u>Subj. Employers (000):</u>	31	31	45

Extended Benefits	(Quarterly)	Past 12 Months
<u>Extended Benefits (000):</u>	\$0	\$0
EB First Payments:	0	0
EB Weeks Claimed:	0	0
EB Exhaustions:	0	0

Loans	Rank
<u>Outstanding Loan Bal (000):</u>	\$0 2
Loan per Cov Employee:	\$0 2
Loan as % of Total Wages*:	0 2

* Based on extrapolated wages for the most recent 12 months.

** Wages and Covered Employment lag the rest of the Data Summary information by six months

*** Regular programs include State UI, UCFE and UCX.

+ Refers to most recent calendar year. Fourth and first quarter issues publish measure based on extrapolated wages. Second and third quarter issues publish measure based on actual wages.

See glossary for data definitions

Note: Blank cells appearing in any section of this report indicates that information is unavailable.

UI Data Summary for **Idaho**

CYQ: 2008.3

Benefits	(Quarterly)	Past 12 Months	Rank	High Value : Qtr		Low Value : Qtr	
Benefits Paid (000):	\$36,991	\$183,943	41	\$69,637	2008.1	\$1,990	1972.4
Initial Claims:	25,975	118,999	36	47,070	2001.4	8,753	1972.3
First Payments:	11,309	57,731	36	23,010	2003.1	3,784	1971.2
Weeks Claimed:	163,575	828,619	39	353,845	2003.1	63,956	1972.4
Wks Compensated:	147,169	718,599	38	313,570	2002.1	40,048	1972.4
Exhaustions:	3,883	15,956	37	9,096	1983.1	920	1972.4
Exhaustion Rate:		31.2%	41	52.6%	1983.2	22.0%	1979.3
Average Duration:		12.5	47	15.3	1982.4	10.1	1978.4
AWBA:	\$267.46	\$269.84	35	\$275.29	2008.2	\$45.31	1971.3
As % of AWW:	42.0		9				
Avg. Benefits per First Payment:		\$3,186					

Financial Information	Past 12 Months	Rank
State Revenues (000):	\$110,741	40
Total Wages (000)**:	\$5,138,966	43
Total Wages (Taxable Employers)(000)**:	\$4,172,150	43
Taxable Wages (000)**:	\$3,884,756	34
Avg. Weekly Wage**:	\$637.14	48
Avg. Tax Rate on Taxable Wages (%) **:	1.03	47
Avg. Tax Rate on Total Wages (%) **:	0.68	23
Calendar Yr Taxable Wage Base:	\$32,200	2
Trust Fund (TF) Balance (000):		
(Including Loans):	\$128,142	47
TF as % of Total Wages*:	0.72	33
Interest Earned (000):	\$1,603	49
Avg. High Cost Multiple +:	0.47	34
High Cost Multiple +:	0.35	32

Labor Force	(Quarterly)	Past 12 Mos	Rank
IUR (%):	2.0	2.6	28
TUR (%):	4.0	3.4	42
Total Unemp. (000):	30.6	25.9	42
Insured Unemployed (000) ***			
Regular Programs:	13.2	16.7	38
All Programs:	15.9	17.4	39
Reciency Rates (%) ***			
Regular Programs:	43	65	8
All Programs:	52	67	9
Covered Emp. (000)**:	629	649	40
Civ. Labor Force (000):	760	756	40
Subj. Employers (000):	51	51	37

Extended Benefits	(Quarterly)	Past 12 Months
Extended Benefits (000):	\$0	\$0
EB First Payments:	0	0
EB Weeks Claimed:	0	0
EB Exhaustions:	0	0

Loans	Rank
Outstanding Loan Bal (000):	\$0 2
Loan per Cov Employee:	\$0 2
Loan as % of Total Wages*:	0 2

* Based on extrapolated wages for the most recent 12 months.

** Wages and Covered Employment lag the rest of the Data Summary information by six months

*** Regular programs include State UI, UCFE and UCX.

+ Refers to most recent calendar year. Fourth and first quarter issues publish measure based on extrapolated wages. Second and third quarter issues publish measure based on actual wages.

See glossary for data definitions

Note: Blank cells appearing in any section of this report indicates that information is unavailable.

UI Data Summary for **Illinois**

CYQ: 2008.3

Benefits	(Quarterly)	Past 12 Months	Rank	High Value : Qtr		Low Value : Qtr	
Benefits Paid (000):	\$480,540	\$2,103,253	7	\$759,769	2002.1	\$33,425	1973.3
Initial Claims:	195,020	796,256	9	366,762	1982.1	111,476	1973.2
First Payments:	86,926	390,159	8	210,346	1975.1	45,457	1973.4
Weeks Claimed:	1,846,569	7,810,944	6	3,764,106	1983.1	714,895	1973.4
Wks Compensated:	1,624,206	6,799,477	7	3,334,960	1983.1	563,654	1973.4
Exhaustions:	40,431	137,010	7	83,792	1982.4	12,720	1972.4
Exhaustion Rate:		38.2%	21	53.3%	1983.3	26.9%	2000.4
Average Duration:		17.4	5	21.6	1983.4	11.7	1975.1
AWBA:	\$297.07	\$310.46	22	\$324.57	2008.1	\$51.05	1971.3
As % of AWW:	32.3		39				
Avg. Benefits per First Payment:		\$5,391					

Financial Information	Past 12 Months	Rank
State Revenues (000):	\$1,977,454	4
Total Wages (000)**:	\$72,221,690	5
Total Wages (Taxable Employers)(000)**:	\$59,879,452	5
Taxable Wages (000)**:	\$34,288,336	5
Avg. Weekly Wage**:	\$918.63	7
Avg. Tax Rate on Taxable Wages (%) **:	3.26	7
Avg. Tax Rate on Total Wages (%) **:	0.85	10
Calendar Yr Taxable Wage Base:	\$12,000	22
Trust Fund (TF) Balance (000):		
(Including Loans):	\$1,849,318	3
TF as % of Total Wages*:	0.79	29
Interest Earned (000):	\$22,783	5
Avg. High Cost Multiple +:	0.35	39
High Cost Multiple +:	0.3	35

Labor Force	(Quarterly)	Past 12 Mos	Rank
IUR (%):	2.4	2.6	18
TUR (%):	7.1	6.1	9
Total Unemp. (000):	477.4	409.9	5
Insured Unemployed (000) ***			
Regular Programs:	141.5	149.1	6
All Programs:	194.2	162.3	7
Reciency Rates (%) ***			
Regular Programs:	30	36	31
All Programs:	41	40	30
Covered Emp. (000)**:	5,689	5,787	5
Civ. Labor Force (000):	6,768	6,767	5
Subj. Employers (000):	292	297	5

Extended Benefits	(Quarterly)	Past 12 Months
Extended Benefits (000):	\$0	\$0
EB First Payments:	0	0
EB Weeks Claimed:	0	0
EB Exhaustions:	0	0

Loans	Rank
Outstanding Loan Bal (000):	\$0 2
Loan per Cov Employee:	\$0 2
Loan as % of Total Wages*:	0 2

* Based on extrapolated wages for the most recent 12 months.

** Wages and Covered Employment lag the rest of the Data Summary information by six months

*** Regular programs include State UI, UCFE and UCX.

+ Refers to most recent calendar year. Fourth and first quarter issues publish measure based on extrapolated wages. Second and third quarter issues publish measure based on actual wages.

See glossary for data definitions

Note: Blank cells appearing in any section of this report indicates that information is unavailable.

UI Data Summary for Indiana

CYQ: 2008.3

Benefits	(Quarterly)	Past 12 Months	Rank	High Value : Qtr		Low Value : Qtr	
<u>Benefits Paid (000):</u>	\$216,146	\$830,931	13	\$261,983	2008.1	\$8,800	1973.3
<u>Initial Claims:</u>	142,807	527,935	11	239,452	1975.1	42,913	1994.2
<u>First Payments:</u>	57,263	224,273	13	135,044	1975.1	14,237	1976.3
<u>Weeks Claimed:</u>	879,036	3,368,535	14	1,563,934	1975.1	234,695	1973.3
<u>Wks Compensated:</u>	756,908	2,893,035	14	1,367,828	1975.1	199,188	1973.4
<u>Exhaustions:</u>	21,742	82,231	13	37,884	1975.2	4,727	1988.4
<u>Exhaustion Rate:</u>		42.6%	14	44.0%	2003.4	20.6%	1990.3
<u>Average Duration:</u>		12.9	45	16.0	1983.4	8.6	1974.1
<u>AWBA:</u>	\$291.97	\$294.07	23	\$299.65	2008.1	\$40.32	1971.2
As % of AWW:	40.5		14				
<u>Avg. Benefits per First Payment:</u>		\$3,705					

Financial Information	Past 12 Months	Rank
<u>State Revenues (000):</u>	\$549,337	18
<u>Total Wages (000)**:</u>	\$27,491,755	17
<u>Total Wages (Taxable Employers)(000)**:</u>	\$22,521,404	18
<u>Taxable Wages (000)**:</u>	\$12,180,502	26
<u>Avg. Weekly Wage**:</u>	\$720.87	33
<u>Avg. Tax Rate on Taxable Wages (%) **:</u>	2.70	12
<u>Avg. Tax Rate on Total Wages (%) **:</u>	0.60	28
<u>Calendar Yr Taxable Wage Base:</u>	\$7,000	49
<u>Trust Fund (TF) Balance (000):</u>		
(Including Loans):	\$90,735	50
<u>TF as % of Total Wages*:</u>	0.10	52
<u>Interest Earned (000):</u>	\$2,052	43
<u>Avg. High Cost Multiple +:</u>	0.29	44
<u>High Cost Multiple +:</u>	0.2	43

Labor Force	(Quarterly)	Past 12 Mos	Rank
<u>IUR (%):</u>	2.4	2.3	21
<u>TUR (%):</u>	6.1	5.2	18
<u>Total Unemp. (000):</u>	198.6	168.1	13
Insured Unemployed (000) ***			
<u>Regular Programs:</u>	67.6	64.8	14
<u>All Programs:</u>	90.8	70.6	14
Reciency Rates (%) ***			
<u>Regular Programs:</u>	34	39	21
<u>All Programs:</u>	46	42	22
<u>Covered Emp. (000)**:</u>	2,809	2,868	15
<u>Civ. Labor Force (000):</u>	3,267	3,226	15
<u>Subj. Employers (000):</u>	128	130	20

Extended Benefits	(Quarterly)	Past 12 Months
<u>Extended Benefits (000):</u>	\$0	\$0
EB First Payments:	0	0
EB Weeks Claimed:	0	0
EB Exhaustions:	0	0

Loans	Rank
<u>Outstanding Loan Bal (000):</u>	\$0 2
Loan per Cov Employee:	\$0 2
Loan as % of Total Wages*:	0 2

* Based on extrapolated wages for the most recent 12 months.

** Wages and Covered Employment lag the rest of the Data Summary information by six months

*** Regular programs include State UI, UCFE and UCX.

+ Refers to most recent calendar year. Fourth and first quarter issues publish measure based on extrapolated wages. Second and third quarter issues publish measure based on actual wages.

See glossary for data definitions

Note: Blank cells appearing in any section of this report indicates that information is unavailable.

UI Data Summary for Iowa

CYQ: 2008.3

Benefits	(Quarterly)	Past 12 Months	Rank	High Value : Qtr		Low Value : Qtr	
Benefits Paid (000):	\$76,157	\$368,760	30	\$138,548	2008.1	\$4,418	1972.4
Initial Claims:	55,316	233,418	29	91,605	1982.1	15,337	1974.2
First Payments:	20,910	104,775	29	63,848	1982.1	6,856	1974.2
Weeks Claimed:	297,930	1,397,727	33	762,074	1983.1	104,815	1974.3
Wks Compensated:	273,533	1,286,810	31	728,215	1983.1	79,526	1973.4
Exhaustions:	5,472	23,032	33	17,724	1983.1	1,761	1973.4
Exhaustion Rate:		24.5%	47	46.5%	1975.3	13.6%	1979.4
Average Duration:		12.3	48	15.8	1983.2	10.6	1999.2
AWBA:	\$290.43	\$299.40	24	\$306.40	2008.1	\$52.22	1971.3
As % of AWW:	42.1		8				
Avg. Benefits per First Payment:		\$3,520					

Financial Information	Past 12 Months	Rank
State Revenues (000):	\$363,127	24
Total Wages (000)**:	\$13,276,361	30
Total Wages (Taxable Employers)(000)**:	\$10,424,187	32
Taxable Wages (000)**:	\$9,147,899	21
Avg. Weekly Wage**:	\$689.17	40
Avg. Tax Rate on Taxable Wages (%) **:	1.57	31
Avg. Tax Rate on Total Wages (%) **:	0.84	11
Calendar Yr Taxable Wage Base:	\$22,800	10
Trust Fund (TF) Balance (000):		
(Including Loans):	\$756,589	17
TF as % of Total Wages*:	1.77	15
Interest Earned (000):	\$8,865	18
Avg. High Cost Multiple +:	0.88	24
High Cost Multiple +:	0.68	20

Labor Force	(Quarterly)	Past 12 Mos	Rank
IUR (%):	1.6	1.8	41
TUR (%):	4.0	3.9	43
Total Unemp. (000):	67.3	65.0	33
Insured Unemployed (000) ***			
Regular Programs:	22.9	26.9	33
All Programs:	30.8	28.9	33
Reciency Rates (%) ***			
Regular Programs:	34	41	20
All Programs:	46	44	21
Covered Emp. (000)**:	1,446	1,471	30
Civ. Labor Force (000):	1,689	1,674	30
Subj. Employers (000):	71	72	31

Extended Benefits	(Quarterly)	Past 12 Months
Extended Benefits (000):	\$0	\$0
EB First Payments:	0	0
EB Weeks Claimed:	0	0
EB Exhaustions:	0	0

Loans	Rank
Outstanding Loan Bal (000):	\$0 2
Loan per Cov Employee:	\$0 2
Loan as % of Total Wages*:	0 2

* Based on extrapolated wages for the most recent 12 months.

** Wages and Covered Employment lag the rest of the Data Summary information by six months

*** Regular programs include State UI, UCFE and UCX.

+ Refers to most recent calendar year. Fourth and first quarter issues publish measure based on extrapolated wages. Second and third quarter issues publish measure based on actual wages.

See glossary for data definitions

Note: Blank cells appearing in any section of this report indicates that information is unavailable.

UI Data Summary for **Kansas**

CYQ: 2008.3

Benefits	(Quarterly)	Past 12 Months	Rank	High Value : Qtr		Low Value : Qtr	
Benefits Paid (000):	\$75,088	\$283,770	31	\$105,996	2003.1	\$3,919	1973.3
Initial Claims:	37,177	144,751	33	58,971	1983.1	12,849	1973.2
First Payments:	14,700	64,718	34	32,068	1982.1	6,024	1973.2
Weeks Claimed:	269,153	1,026,421	34	507,786	1983.1	94,003	1973.3
Wks Compensated:	245,825	922,253	34	473,467	1982.3	74,015	1973.3
Exhaustions:	6,378	20,341	31	16,294	1983.1	1,499	1973.4
Exhaustion Rate:		32.8%	39	48.1%	1983.3	20.6%	1980.1
Average Duration:		14.3	29	18.4	1983.3	10.7	1974.1
AWBA:	\$310.08	\$312.42	12	\$317.42	2008.1	\$50.55	1971.3
As % of AWW:	43.7		6				
Avg. Benefits per First Payment:		\$4,385					

Financial Information	Past 12 Months	Rank
State Revenues (000):	\$223,343	31
Total Wages (000)**:	\$12,637,540	32
Total Wages (Taxable Employers)(000)**:	\$11,659,644	30
Taxable Wages (000)**:	\$7,306,520	29
Avg. Weekly Wage**:	\$710.04	35
Avg. Tax Rate on Taxable Wages (%) **:	1.44	35
Avg. Tax Rate on Total Wages (%) **:	0.48	34
Calendar Yr Taxable Wage Base:	\$8,000	41
Trust Fund (TF) Balance (000):		
(Including Loans):	\$635,593	22
TF as % of Total Wages*:	1.37	20
Interest Earned (000):	\$7,740	21
Avg. High Cost Multiple +:	0.97	21
High Cost Multiple +:	0.72	16

Labor Force	(Quarterly)	Past 12 Mos	Rank
IUR (%):	1.5	1.5	42
TUR (%):	4.8	4.3	33
Total Unemp. (000):	72.3	63.4	32
Insured Unemployed (000) ***			
Regular Programs:	20.2	19.5	34
All Programs:	23.3	20.2	34
Reciency Rates (%) ***			
Regular Programs:	28	31	37
All Programs:	32	32	44
Covered Emp. (000)**:	1,329	1,338	31
Civ. Labor Force (000):	1,502	1,488	31
Subj. Employers (000):	70	71	32

Extended Benefits	(Quarterly)	Past 12 Months
Extended Benefits (000):	\$0	\$0
EB First Payments:	0	0
EB Weeks Claimed:	0	0
EB Exhaustions:	0	0

Loans	Rank
Outstanding Loan Bal (000):	\$0 2
Loan per Cov Employee:	\$0 2
Loan as % of Total Wages*:	0 2

* Based on extrapolated wages for the most recent 12 months.

** Wages and Covered Employment lag the rest of the Data Summary information by six months

*** Regular programs include State UI, UCFE and UCX.

+ Refers to most recent calendar year. Fourth and first quarter issues publish measure based on extrapolated wages. Second and third quarter issues publish measure based on actual wages.

See glossary for data definitions

Note: Blank cells appearing in any section of this report indicates that information is unavailable.

UI Data Summary for Kentucky

CYQ: 2008.3

Benefits	(Quarterly)	Past 12 Months	Rank	High Value : Qtr		Low Value : Qtr	
<u>Benefits Paid (000):</u>	\$137,050	\$497,485	21	\$148,652	2003.1	\$7,436	1972.3
<u>Initial Claims:</u>	97,059	366,317	18	170,954	1994.1	25,015	1973.2
<u>First Payments:</u>	30,488	121,054	26	110,332	1994.1	11,096	1972.2
<u>Weeks Claimed:</u>	476,110	1,783,950	27	1,029,444	1983.1	169,408	1973.3
<u>Wks Compensated:</u>	465,586	1,741,119	24	974,059	1983.1	147,330	1973.3
<u>Exhaustions:</u>	8,017	26,861	29	20,572	1983.1	2,882	1972.4
<u>Exhaustion Rate:</u>		23.7%	49	39.4%	1983.1	12.8%	1995.2
<u>Average Duration:</u>		14.4	25	18.6	1983.4	8.9	1994.1
<u>AWBA:</u>	\$304.98	\$296.69	16	\$304.98	2008.3	\$46.26	1971.2
As % of AWW:	43.7		5				
<u>Avg. Benefits per First Payment:</u>		\$4,110					

Financial Information	Past 12 Months	Rank
<u>State Revenues (000):</u>	\$392,982	22
<u>Total Wages (000)**:</u>	\$16,066,481	28
<u>Total Wages (Taxable Employers)(000)**:</u>	\$12,798,747	28
<u>Taxable Wages (000)**:</u>	\$7,848,354	32
<u>Avg. Weekly Wage**:</u>	\$698.20	38
<u>Avg. Tax Rate on Taxable Wages (%) **:</u>	2.75	10
<u>Avg. Tax Rate on Total Wages (%) **:</u>	0.71	21
<u>Calendar Yr Taxable Wage Base:</u>	\$8,000	41
<u>Trust Fund (TF) Balance (000):</u>		
(Including Loans):	\$194,414	42
<u>TF as % of Total Wages*:</u>	0.37	44
<u>Interest Earned (000):</u>	\$2,683	41
<u>Avg. High Cost Multiple +:</u>	0.21	49
<u>High Cost Multiple +:</u>	0.16	46

Labor Force	(Quarterly)	Past 12 Mos	Rank
<u>IUR (%):</u>	2.2	2.1	22
<u>TUR (%):</u>	6.7	5.9	14
<u>Total Unemp. (000):</u>	136.7	121.5	24
Insured Unemployed (000) ***			
<u>Regular Programs:</u>	38.6	36.2	27
<u>All Programs:</u>	49.1	38.8	27
Reciency Rates (%) ***			
<u>Regular Programs:</u>	28	30	34
<u>All Programs:</u>	36	32	36
<u>Covered Emp. (000)**:</u>	1,750	1,766	26
<u>Civ. Labor Force (000):</u>	2,052	2,044	26
<u>Subj. Employers (000):</u>	85	86	28

Extended Benefits	(Quarterly)	Past 12 Months
<u>Extended Benefits (000):</u>	\$0	\$0
EB First Payments:	0	0
EB Weeks Claimed:	0	0
EB Exhaustions:	0	0

Loans	Rank
<u>Outstanding Loan Bal (000):</u>	\$0 2
Loan per Cov Employee:	\$0 2
Loan as % of Total Wages*:	0 2

* Based on extrapolated wages for the most recent 12 months.

** Wages and Covered Employment lag the rest of the Data Summary information by six months

*** Regular programs include State UI, UCFE and UCX.

+ Refers to most recent calendar year. Fourth and first quarter issues publish measure based on extrapolated wages. Second and third quarter issues publish measure based on actual wages.

See glossary for data definitions

Note: Blank cells appearing in any section of this report indicates that information is unavailable.

UI Data Summary for Louisiana

CYQ: 2008.3

Benefits	(Quarterly)	Past 12 Months	Rank	High Value : Qtr		Low Value : Qtr	
<u>Benefits Paid (000):</u>	\$54,141	\$189,823	35	\$472,654	2005.4	\$11,866	1972.3
<u>Initial Claims:</u>	91,529	200,279	21	228,256	2005.3	30,169	2007.3
<u>First Payments:</u>	16,346	63,735	33	144,081	2005.3	12,250	2007.2
<u>Weeks Claimed:</u>	361,076	1,168,975	30	2,775,877	2005.4	243,812	2007.4
<u>Wks Compensated:</u>	260,622	915,962	33	2,477,795	2005.4	195,524	2007.2
<u>Exhaustions:</u>	6,052	22,254	32	70,297	2006.1	4,215	1998.4
<u>Exhaustion Rate:</u>		38.3%	20	63.1%	1987.1	19.5%	2007.1
<u>Average Duration:</u>		14.4	26	27.1	2006.4	7.9	2005.3
<u>AWBA:</u>	\$209.58	\$209.36	49	\$210.59	2008.1	\$45.89	1971.1
As % of AWW:	28.5		45				
<u>Avg. Benefits per First Payment:</u>		\$2,978					

Financial Information	Past 12 Months	Rank
<u>State Revenues (000):</u>	\$170,236	34
<u>Total Wages (000)**:</u>	\$18,200,327	24
<u>Total Wages (Taxable Employers)(000)**:</u>	\$14,691,618	24
<u>Taxable Wages (000)**:</u>	\$7,825,675	31
<u>Avg. Weekly Wage**:</u>	\$736.66	31
<u>Avg. Tax Rate on Taxable Wages (%) **:</u>	1.41	38
<u>Avg. Tax Rate on Total Wages (%) **:</u>	0.33	46
<u>Calendar Yr Taxable Wage Base:</u>	\$7,000	49
<u>Trust Fund (TF) Balance (000):</u>		
(Including Loans):	\$1,483,865	7
<u>TF as % of Total Wages*:</u>	2.51	8
<u>Interest Earned (000):</u>	\$17,710	8
<u>Avg. High Cost Multiple +:</u>	0.94	22
<u>High Cost Multiple +:</u>	0.83	10

Labor Force	(Quarterly)	Past 12 Mos	Rank
<u>IUR (%):</u>	1.6	1.3	40
<u>TUR (%):</u>	4.9	4.1	32
<u>Total Unemp. (000):</u>	100.3	83.6	30
Insured Unemployed (000) ***			
<u>Regular Programs:</u>	29.1	23.5	30
<u>All Programs:</u>	33.8	25.0	32
Reciency Rates (%) ***			
<u>Regular Programs:</u>	29	28	32
<u>All Programs:</u>	34	30	40
<u>Covered Emp. (000)**:</u>	1,845	1,846	24
<u>Civ. Labor Force (000):</u>	2,055	2,019	25
<u>Subj. Employers (000):</u>	99	102	25

Extended Benefits	(Quarterly)	Past 12 Months
<u>Extended Benefits (000):</u>	\$0	\$3
EB First Payments:	2	6
EB Weeks Claimed:	13,151	13,162
EB Exhaustions:	0	0

Loans	Rank
<u>Outstanding Loan Bal (000):</u>	\$0 2
Loan per Cov Employee:	\$0 2
Loan as % of Total Wages*:	0 2

* Based on extrapolated wages for the most recent 12 months.

** Wages and Covered Employment lag the rest of the Data Summary information by six months

*** Regular programs include State UI, UCFE and UCX.

+ Refers to most recent calendar year. Fourth and first quarter issues publish measure based on extrapolated wages. Second and third quarter issues publish measure based on actual wages.

See glossary for data definitions

Note: Blank cells appearing in any section of this report indicates that information is unavailable.

UI Data Summary for Maine

CYQ: 2008.3

Benefits	(Quarterly)	Past 12 Months	Rank	High Value : Qtr		Low Value : Qtr	
<u>Benefits Paid (000):</u>	\$25,974	\$129,407	44	\$59,871	1991.1	\$4,084	1973.4
<u>Initial Claims:</u>	14,619	71,277	45	55,565	1991.1	10,710	2007.3
<u>First Payments:</u>	6,268	35,581	45	35,621	1975.1	4,372	2000.3
<u>Weeks Claimed:</u>	119,874	590,503	44	443,727	1991.1	83,258	2000.3
<u>Wks Compensated:</u>	100,338	507,286	44	385,026	1991.1	65,703	2000.3
<u>Exhaustions:</u>	2,656	11,208	45	10,511	1975.2	1,314	1988.4
<u>Exhaustion Rate:</u>		33.8%	35	64.5%	1983.3	19.9%	1988.3
<u>Average Duration:</u>		14.3	28	18.7	1983.3	10.1	1980.1
<u>AWBA:</u>	\$266.42	\$261.78	36	\$266.42	2008.3	\$46.43	1971.3
As % of AWW:	39.9		16				
<u>Avg. Benefits per First Payment:</u>		\$3,637					

Financial Information	Past 12 Months	Rank
<u>State Revenues (000):</u>	\$99,943	43
<u>Total Wages (000)**:</u>	\$5,106,319	44
<u>Total Wages (Taxable Employers)(000)**:</u>	\$3,766,408	45
<u>Taxable Wages (000)**:</u>	\$2,885,044	42
<u>Avg. Weekly Wage**:</u>	\$668.49	45
<u>Avg. Tax Rate on Taxable Wages (%) **:</u>	1.70	29
<u>Avg. Tax Rate on Total Wages (%) **:</u>	0.63	27
<u>Calendar Yr Taxable Wage Base:</u>	\$12,000	22
<u>Trust Fund (TF) Balance (000):</u>		
(Including Loans):	\$466,735	29
<u>TF as % of Total Wages*:</u>	3.00	5
<u>Interest Earned (000):</u>	\$5,559	30
<u>Avg. High Cost Multiple +:</u>	1.64	4
<u>High Cost Multiple +:</u>	1.12	7

Labor Force	(Quarterly)	Past 12 Mos	Rank
<u>IUR (%):</u>	1.6	2.0	37
<u>TUR (%):</u>	4.9	5.1	31
<u>Total Unemp. (000):</u>	35.6	36.3	39
Insured Unemployed (000) ***			
<u>Regular Programs:</u>	9.6	11.6	43
<u>All Programs:</u>	13.0	12.4	44
Reciency Rates (%) ***			
<u>Regular Programs:</u>	27	32	38
<u>All Programs:</u>	36	34	34
<u>Covered Emp. (000)**:</u>	570	589	43
<u>Civ. Labor Force (000):</u>	723	709	42
<u>Subj. Employers (000):</u>	41	42	40

Extended Benefits	(Quarterly)	Past 12 Months
<u>Extended Benefits (000):</u>	\$0	\$0
EB First Payments:	0	0
EB Weeks Claimed:	0	0
EB Exhaustions:	0	0

Loans	Rank
<u>Outstanding Loan Bal (000):</u>	\$0 2
Loan per Cov Employee:	\$0 2
Loan as % of Total Wages*:	0 2

* Based on extrapolated wages for the most recent 12 months.

** Wages and Covered Employment lag the rest of the Data Summary information by six months

*** Regular programs include State UI, UCFE and UCX.

+ Refers to most recent calendar year. Fourth and first quarter issues publish measure based on extrapolated wages. Second and third quarter issues publish measure based on actual wages.

See glossary for data definitions

Note: Blank cells appearing in any section of this report indicates that information is unavailable.

UI Data Summary for **Maryland**

CYQ: 2008.3

Benefits	(Quarterly)	Past 12 Months	Rank	High Value : Qtr		Low Value : Qtr	
Benefits Paid (000):	\$152,012	\$559,544	19	\$154,086	2008.1	\$12,029	1973.3
Initial Claims:	61,846	244,417	25	118,620	1975.1	38,277	1973.2
First Payments:	30,558	122,089	25	70,645	1975.1	14,868	1973.2
Weeks Claimed:	582,911	2,165,440	23	1,021,835	1992.1	269,003	1973.4
Wks Compensated:	504,558	1,892,372	23	850,921	1982.1	202,353	1973.4
Exhaustions:	12,044	39,636	24	19,819	1975.3	3,394	1973.4
Exhaustion Rate:		36.7%	28	38.7%	1975.3	18.4%	1979.3
Average Duration:		15.5	15	17.9	1992.1	11.4	1974.4
AWBA:	\$305.59	\$300.09	15	\$305.89	2008.2	\$52.82	1971.2
As % of AWW:	33.9		35				
Avg. Benefits per First Payment:		\$4,583					

Financial Information	Past 12 Months	Rank
State Revenues (000):	\$388,071	23
Total Wages (000)**:	\$28,964,785	16
Total Wages (Taxable Employers)(000)**:	\$22,718,432	16
Taxable Wages (000)**:	\$11,771,927	25
Avg. Weekly Wage**:	\$900.93	9
Avg. Tax Rate on Taxable Wages (%) **:	1.74	27
Avg. Tax Rate on Total Wages (%) **:	0.38	40
Calendar Yr Taxable Wage Base:	\$8,500	35
Trust Fund (TF) Balance (000):		
(Including Loans):	\$896,734	12
TF as % of Total Wages*:	0.99	24
Interest Earned (000):	\$11,170	12
Avg. High Cost Multiple +:	0.79	27
High Cost Multiple +:	0.53	23

Labor Force	(Quarterly)	Past 12 Mos	Rank
IUR (%):	2.0	1.9	29
TUR (%):	4.5	3.9	38
Total Unemp. (000):	136.4	116.7	25
Insured Unemployed (000) ***			
Regular Programs:	48.9	45.2	21
All Programs:	63.5	48.8	23
Reciency Rates (%) ***			
Regular Programs:	36	39	16
All Programs:	47	42	19
Covered Emp. (000)**:	2,392	2,424	21
Civ. Labor Force (000):	3,038	3,002	19
Subj. Employers (000):	140	143	16

Extended Benefits	(Quarterly)	Past 12 Months
Extended Benefits (000):	\$0	\$0
EB First Payments:	0	0
EB Weeks Claimed:	0	0
EB Exhaustions:	0	0

Loans	Rank
Outstanding Loan Bal (000):	\$0 2
Loan per Cov Employee:	\$0 2
Loan as % of Total Wages*:	0 2

* Based on extrapolated wages for the most recent 12 months.

** Wages and Covered Employment lag the rest of the Data Summary information by six months

*** Regular programs include State UI, UCFE and UCX.

+ Refers to most recent calendar year. Fourth and first quarter issues publish measure based on extrapolated wages. Second and third quarter issues publish measure based on actual wages.

See glossary for data definitions

Note: Blank cells appearing in any section of this report indicates that information is unavailable.

UI Data Summary for **Massachusetts**

CYQ: 2008.3

Benefits	(Quarterly)	Past 12 Months	Rank	High Value : Qtr		Low Value : Qtr	
Benefits Paid (000):	\$397,361	\$1,600,970	9	\$634,981	2002.1	\$46,838	1972.4
Initial Claims:	95,610	432,782	19	250,766	1974.4	65,733	1997.3
First Payments:	54,662	232,893	14	157,733	1975.1	30,738	1987.2
Weeks Claimed:	1,219,012	4,762,347	11	2,382,332	1975.1	556,699	1987.4
Wks Compensated:	1,037,348	4,210,384	11	2,159,531	1975.1	518,866	1987.4
Exhaustions:	23,537	84,430	12	48,214	1975.2	10,557	1984.4
Exhaustion Rate:		38.1%	22	47.3%	2003.2	24.2%	1985.3
Average Duration:		18.1	4	20.4	1992.1	14.2	1985.2
AWBA:	\$383.77	\$387.31	2	\$391.91	2008.2	\$56.86	1971.2
As % of AWW:	35.9		28				
Avg. Benefits per First Payment:		\$6,874					

Financial Information	Past 12 Months	Rank
State Revenues (000):	\$1,519,733	7
Total Wages (000)**:	\$46,678,277	10
Total Wages (Taxable Employers)(000)**:	\$38,226,749	9
Taxable Wages (000)**:	\$22,083,335	10
Avg. Weekly Wage**:	\$1,067.97	4
Avg. Tax Rate on Taxable Wages (%) **:	3.45	4
Avg. Tax Rate on Total Wages (%) **:	1.01	8
Calendar Yr Taxable Wage Base:	\$14,000	18
Trust Fund (TF) Balance (000):		
(Including Loans):	\$1,403,903	9
TF as % of Total Wages*:	0.95	26
Interest Earned (000):	\$17,219	9
Avg. High Cost Multiple +:	0.50	32
High Cost Multiple +:	0.28	37

Labor Force	(Quarterly)	Past 12 Mos	Rank
IUR (%):	2.9	2.8	9
TUR (%):	5.2	4.7	28
Total Unemp. (000):	178.4	159.9	18
Insured Unemployed (000) ***			
Regular Programs:	92.8	90.4	11
All Programs:	121.2	97.5	12
Reciency Rates (%) ***			
Regular Programs:	52	57	1
All Programs:	68	61	3
Covered Emp. (000)**:	3,145	3,193	13
Civ. Labor Force (000):	3,442	3,409	14
Subj. Employers (000):	188	187	13

Extended Benefits	(Quarterly)	Past 12 Months
Extended Benefits (000):	\$0	\$0
EB First Payments:	0	0
EB Weeks Claimed:	0	0
EB Exhaustions:	0	0

Loans	Rank
Outstanding Loan Bal (000):	\$0 2
Loan per Cov Employee:	\$0 2
Loan as % of Total Wages*:	0 2

* Based on extrapolated wages for the most recent 12 months.

** Wages and Covered Employment lag the rest of the Data Summary information by six months

*** Regular programs include State UI, UCFE and UCX.

+ Refers to most recent calendar year. Fourth and first quarter issues publish measure based on extrapolated wages. Second and third quarter issues publish measure based on actual wages.

See glossary for data definitions

Note: Blank cells appearing in any section of this report indicates that information is unavailable.

UI Data Summary for Michigan

CYQ: 2008.3

Benefits	(Quarterly)	Past 12 Months	Rank	High Value : Qtr		Low Value : Qtr	
Benefits Paid (000):	\$480,824	\$2,026,587	6	\$667,851	2004.1	\$37,946	1973.3
Initial Claims:	258,474	993,802	4	631,661	1980.2	107,765	1999.2
First Payments:	122,792	467,321	4	302,813	1975.1	45,089	1973.2
Weeks Claimed:	1,850,107	7,788,754	5	4,570,735	1975.1	850,960	2000.2
Wks Compensated:	1,657,472	7,014,173	5	4,105,400	1975.1	659,905	1973.4
Exhaustions:	42,704	162,596	5	97,918	1975.2	17,145	2000.3
Exhaustion Rate:		36.7%	27	46.6%	1981.1	18.4%	2000.4
Average Duration:		15.0	20	18.1	1980.4	10.1	2001.1
AWBA:	\$300.28	\$298.67	21	\$301.04	2008.2	\$57.21	1971.4
As % of AWW:	36.1		27				
Avg. Benefits per First Payment:		\$4,337					

Financial Information	Past 12 Months	Rank
State Revenues (000):	\$1,590,532	6
Total Wages (000)**:	\$44,432,037	9
Total Wages (Taxable Employers)(000)**:	\$35,186,719	11
Taxable Wages (000)**:	\$19,775,500	14
Avg. Weekly Wage**:	\$831.77	16
Avg. Tax Rate on Taxable Wages (%) **:	4.71	2
Avg. Tax Rate on Total Wages (%) **:	1.09	4
Calendar Yr Taxable Wage Base:	\$9,000	31
Trust Fund (TF) Balance (000):		
(Including Loans):	\$35,773	51
TF as % of Total Wages*:	0.03	53
Interest Earned (000):	\$0	53
Avg. High Cost Multiple +:	N.A.	53
High Cost Multiple +:	N.A.	53

Labor Force	(Quarterly)	Past 12 Mos	Rank
IUR (%):	3.5	3.7	2
TUR (%):	8.6	7.8	2
Total Unemp. (000):	429.3	390.1	6
Insured Unemployed (000) ***			
Regular Programs:	144.9	151.4	5
All Programs:	213.1	168.5	5
Reciency Rates (%) ***			
Regular Programs:	34	39	22
All Programs:	50	43	14
Covered Emp. (000)**:	4,002	4,112	8
Civ. Labor Force (000):	4,982	4,983	8
Subj. Employers (000):	219	224	9

Extended Benefits	(Quarterly)	Past 12 Months
Extended Benefits (000):	\$0	\$0
EB First Payments:	0	0
EB Weeks Claimed:	0	0
EB Exhaustions:	0	0

Loans	Rank
Outstanding Loan Bal (000):	\$362,400 1
Loan per Cov Employee:	\$88 1
Loan as % of Total Wages*:	0.2571 1

* Based on extrapolated wages for the most recent 12 months.

** Wages and Covered Employment lag the rest of the Data Summary information by six months

*** Regular programs include State UI, UCFE and UCX.

+ Refers to most recent calendar year. Fourth and first quarter issues publish measure based on extrapolated wages. Second and third quarter issues publish measure based on actual wages.

See glossary for data definitions

Note: Blank cells appearing in any section of this report indicates that information is unavailable.

UI Data Summary for **Minnesota**

CYQ: 2008.3

Benefits	(Quarterly)	Past 12 Months	Rank	High Value : Qtr		Low Value : Qtr	
Benefits Paid (000):	\$153,422	\$816,984	18	\$297,915	2002.1	\$10,434	1971.3
Initial Claims:	51,644	271,035	31	111,066	1982.4	30,305	1973.2
First Payments:	25,067	142,203	28	68,591	1975.1	14,570	1973.3
Weeks Claimed:	549,102	2,873,577	24	1,087,887	1983.1	257,773	1973.3
Wks Compensated:	465,483	2,435,169	25	1,008,063	1983.1	199,220	1973.3
Exhaustions:	11,274	51,283	25	29,103	1983.1	4,658	1978.3
Exhaustion Rate:		36.6%	29	51.9%	1975.3	22.5%	2000.4
Average Duration:		17.1	8	18.2	1983.3	13.0	1980.1
AWBA:	\$335.99	\$341.44	7	\$348.47	2007.1	\$48.42	1971.3
As % of AWW:	39.2		21				
Avg. Benefits per First Payment:		\$5,745					

Financial Information	Past 12 Months	Rank
State Revenues (000):	\$832,356	13
Total Wages (000)**:	\$30,714,836	15
Total Wages (Taxable Employers)(000)**:	\$24,230,533	15
Taxable Wages (000)**:	\$19,116,010	9
Avg. Weekly Wage**:	\$858.23	14
Avg. Tax Rate on Taxable Wages (%) **:	1.62	30
Avg. Tax Rate on Total Wages (%) **:	0.75	17
Calendar Yr Taxable Wage Base:	\$25,000	8
Trust Fund (TF) Balance (000):		
(Including Loans):	\$574,137	23
TF as % of Total Wages*:	0.60	38
Interest Earned (000):	\$6,735	25
Avg. High Cost Multiple +:	0.38	38
High Cost Multiple +:	0.3	35

Labor Force	(Quarterly)	Past 12 Mos	Rank
IUR (%):	1.6	2.1	38
TUR (%):	5.7	5.1	23
Total Unemp. (000):	168.6	149.5	19
Insured Unemployed (000) ***			
Regular Programs:	42.4	55.1	24
All Programs:	42.4	55.1	28
Reciency Rates (%) ***			
Regular Programs:	25	37	45
All Programs:	25	37	51
Covered Emp. (000)**:	2,609	2,659	19
Civ. Labor Force (000):	2,960	2,937	21
Subj. Employers (000):	134	136	18

Extended Benefits	(Quarterly)	Past 12 Months
Extended Benefits (000):	\$0	\$0
EB First Payments:	0	0
EB Weeks Claimed:	0	0
EB Exhaustions:	0	0

Loans	Rank
Outstanding Loan Bal (000):	\$0 2
Loan per Cov Employee:	\$0 2
Loan as % of Total Wages*:	0 2

* Based on extrapolated wages for the most recent 12 months.

** Wages and Covered Employment lag the rest of the Data Summary information by six months

*** Regular programs include State UI, UCFE and UCX.

+ Refers to most recent calendar year. Fourth and first quarter issues publish measure based on extrapolated wages. Second and third quarter issues publish measure based on actual wages.

See glossary for data definitions

Note: Blank cells appearing in any section of this report indicates that information is unavailable.

UI Data Summary for **Mississippi**

CYQ: 2008.3

Benefits	(Quarterly)	Past 12 Months	Rank	High Value : Qtr		Low Value : Qtr	
Benefits Paid (000):	\$47,787	\$152,920	37	\$99,628	2005.4	\$1,738	1972.4
Initial Claims:	42,524	155,372	32	111,429	1982.1	10,210	1972.3
First Payments:	18,872	64,658	32	46,604	1982.1	3,605	1972.3
Weeks Claimed:	329,778	1,103,521	32	687,309	1983.1	64,694	1972.4
Wks Compensated:	271,987	879,231	32	545,032	1983.1	43,771	1972.4
Exhaustions:	5,162	18,883	34	13,945	2006.1	903	1973.4
Exhaustion Rate:		33.8%	36	37.6%	1983.3	19.3%	1974.3
Average Duration:		13.6	39	16.9	2006.4	8.5	1974.4
AWBA:	\$180.77	\$179.08	52	\$202.61	2005.4	\$31.97	1974.1
As % of AWW:	29.4		43				
Avg. Benefits per First Payment:		\$2,365					

Financial Information	Past 12 Months	Rank
State Revenues (000):	\$105,600	42
Total Wages (000)**:	\$8,985,722	35
Total Wages (Taxable Employers)(000)**:	\$7,098,074	36
Taxable Wages (000)**:	\$4,503,217	38
Avg. Weekly Wage**:	\$614.85	50
Avg. Tax Rate on Taxable Wages (%) **:	1.32	42
Avg. Tax Rate on Total Wages (%) **:	0.35	44
Calendar Yr Taxable Wage Base:	\$7,000	49
Trust Fund (TF) Balance (000):		
(Including Loans):	\$717,381	19
TF as % of Total Wages*:	2.50	9
Interest Earned (000):	\$8,641	19
Avg. High Cost Multiple +:	1.70	3
High Cost Multiple +:	1.32	4

Labor Force	(Quarterly)	Past 12 Mos	Rank
IUR (%):	2.4	2.0	19
TUR (%):	7.9	6.7	4
Total Unemp. (000):	105.6	89.3	29
Insured Unemployed (000) ***			
Regular Programs:	26.9	22.5	32
All Programs:	35.4	24.6	31
Reciency Rates (%) ***			
Regular Programs:	25	25	43
All Programs:	34	28	42
Covered Emp. (000)**:	1,107	1,112	35
Civ. Labor Force (000):	1,334	1,330	36
Subj. Employers (000):	55	56	36

Extended Benefits	(Quarterly)	Past 12 Months
Extended Benefits (000):	\$0	\$0
EB First Payments:	0	0
EB Weeks Claimed:	0	0
EB Exhaustions:	0	0

Loans	Rank
Outstanding Loan Bal (000):	\$0 2
Loan per Cov Employee:	\$0 2
Loan as % of Total Wages*:	0 2

* Based on extrapolated wages for the most recent 12 months.

** Wages and Covered Employment lag the rest of the Data Summary information by six months

*** Regular programs include State UI, UCFE and UCX.

+ Refers to most recent calendar year. Fourth and first quarter issues publish measure based on extrapolated wages. Second and third quarter issues publish measure based on actual wages.

See glossary for data definitions

Note: Blank cells appearing in any section of this report indicates that information is unavailable.

UI Data Summary for **Missouri**

CYQ: 2008.3

Benefits	(Quarterly)	Past 12 Months	Rank	High Value : Qtr		Low Value : Qtr	
Benefits Paid (000):	\$136,023	\$505,910	22	\$174,057	2002.1	\$13,289	1973.3
Initial Claims:	100,484	410,607	15	230,473	1975.1	61,852	1972.2
First Payments:	37,286	154,202	18	102,722	1975.1	21,081	1972.2
Weeks Claimed:	706,780	2,670,881	16	1,390,771	1975.1	368,393	1973.3
Wks Compensated:	575,295	2,183,559	20	1,168,718	1975.1	267,636	1973.3
Exhaustions:	13,575	46,814	19	30,085	1975.3	5,746	1973.4
Exhaustion Rate:		32.9%	38	43.2%	2004.2	22.6%	2000.4
Average Duration:		14.2	31	16.6	2004.1	10.4	1979.3
AWBA:	\$242.68	\$238.33	40	\$242.98	2008.2	\$49.06	1971.3
As % of AWW:	32.7		38				
Avg. Benefits per First Payment:		\$3,281					

Financial Information	Past 12 Months	Rank
State Revenues (000):	\$605,678	16
Total Wages (000)**:	\$26,087,854	21
Total Wages (Taxable Employers)(000)**:	\$21,095,069	22
Taxable Wages (000)**:	\$14,378,545	18
Avg. Weekly Wage**:	\$741.84	30
Avg. Tax Rate on Taxable Wages (%) **:	2.20	18
Avg. Tax Rate on Total Wages (%) **:	0.68	24
Calendar Yr Taxable Wage Base:	\$12,000	22
Trust Fund (TF) Balance (000):		
(Including Loans):	\$221,588	40
TF as % of Total Wages*:	0.26	48
Interest Earned (000):	\$2,795	40
Avg. High Cost Multiple +:	0.12	51
High Cost Multiple +:	0.07	51

Labor Force	(Quarterly)	Past 12 Mos	Rank
IUR (%):	2.1	2.0	26
TUR (%):	6.4	5.8	15
Total Unemp. (000):	194.5	174.4	14
Insured Unemployed (000) ***			
Regular Programs:	56.3	53.0	16
All Programs:	67.2	55.8	21
Reciency Rates (%) ***			
Regular Programs:	29	30	33
All Programs:	35	32	38
Covered Emp. (000)**:	2,636	2,669	18
Civ. Labor Force (000):	3,022	3,024	20
Subj. Employers (000):	139	140	17

Extended Benefits	(Quarterly)	Past 12 Months
Extended Benefits (000):	\$0	\$0
EB First Payments:	0	0
EB Weeks Claimed:	0	0
EB Exhaustions:	0	0

Loans	Rank
Outstanding Loan Bal (000):	\$0 2
Loan per Cov Employee:	\$0 2
Loan as % of Total Wages*:	0 2

* Based on extrapolated wages for the most recent 12 months.

** Wages and Covered Employment lag the rest of the Data Summary information by six months

*** Regular programs include State UI, UCFE and UCX.

+ Refers to most recent calendar year. Fourth and first quarter issues publish measure based on extrapolated wages. Second and third quarter issues publish measure based on actual wages.

See glossary for data definitions

Note: Blank cells appearing in any section of this report indicates that information is unavailable.

UI Data Summary for **Montana**

CYQ: 2008.3

Benefits	(Quarterly)	Past 12 Months	Rank	High Value : Qtr		Low Value : Qtr	
Benefits Paid (000):	\$16,641	\$87,265	49	\$33,652	2008.1	\$1,267	1971.3
Initial Claims:	10,349	54,037	47	23,928	1982.4	7,063	2006.3
First Payments:	4,273	24,875	48	14,506	1982.1	2,169	1971.3
Weeks Claimed:	82,166	429,831	48	218,479	1983.1	47,952	1973.3
Wks Compensated:	74,840	373,087	48	184,305	1983.1	31,660	1971.3
Exhaustions:	1,849	7,990	48	5,570	1983.1	1,032	1971.4
Exhaustion Rate:		36.0%	32	46.0%	1983.3	25.2%	1978.3
Average Duration:		15.0	21	16.3	2004.2	12.2	1979.1
AWBA:	\$239.07	\$252.44	41	\$265.83	2008.2	\$37.87	1971.2
As % of AWW:	39.1		22				
Avg. Benefits per First Payment:		\$3,508					

Financial Information	Past 12 Months	Rank
State Revenues (000):	\$82,866	47
Total Wages (000)**:	\$3,321,453	47
Total Wages (Taxable Employers)(000)**:	\$2,799,721	47
Taxable Wages (000)**:	\$2,576,336	39
Avg. Weekly Wage**:	\$610.89	51
Avg. Tax Rate on Taxable Wages (%) **:	1.12	45
Avg. Tax Rate on Total Wages (%) **:	0.73	18
Calendar Yr Taxable Wage Base:	\$23,800	9
Trust Fund (TF) Balance (000):		
(Including Loans):	\$282,048	37
TF as % of Total Wages*:	2.37	11
Interest Earned (000):	\$3,336	37
Avg. High Cost Multiple +:	1.45	9
High Cost Multiple +:	0.82	11

Labor Force	(Quarterly)	Past 12 Mos	Rank
IUR (%):	1.6	2.1	39
TUR (%):	3.7	3.8	47
Total Unemp. (000):	18.9	19.0	48
Insured Unemployed (000) ***			
Regular Programs:	6.7	8.8	47
All Programs:	8.5	9.3	47
Reciency Rates (%) ***			
Regular Programs:	36	46	17
All Programs:	45	49	23
Covered Emp. (000)**:	417	425	46
Civ. Labor Force (000):	511	504	45
Subj. Employers (000):	38	38	42

Extended Benefits	(Quarterly)	Past 12 Months
Extended Benefits (000):	\$0	\$0
EB First Payments:	0	0
EB Weeks Claimed:	0	0
EB Exhaustions:	0	0

Loans	Rank
Outstanding Loan Bal (000):	\$0 2
Loan per Cov Employee:	\$0 2
Loan as % of Total Wages*:	0 2

* Based on extrapolated wages for the most recent 12 months.

** Wages and Covered Employment lag the rest of the Data Summary information by six months

*** Regular programs include State UI, UCFE and UCX.

+ Refers to most recent calendar year. Fourth and first quarter issues publish measure based on extrapolated wages. Second and third quarter issues publish measure based on actual wages.

See glossary for data definitions

Note: Blank cells appearing in any section of this report indicates that information is unavailable.

UI Data Summary for **Nebraska**

CYQ: 2008.3

Benefits	(Quarterly)	Past 12 Months	Rank	High Value : Qtr		Low Value : Qtr	
Benefits Paid (000):	\$22,099	\$94,573	46	\$40,183	2003.1	\$2,319	1971.3
Initial Claims:	16,348	72,643	41	29,750	1982.4	7,244	1972.2
First Payments:	7,712	34,310	42	22,141	1975.1	3,557	1972.2
Weeks Claimed:	121,875	524,860	43	314,764	1983.1	51,311	1972.3
Wks Compensated:	95,665	408,499	46	282,568	1983.1	45,263	1978.3
Exhaustions:	3,406	13,742	40	6,938	1983.1	917	1977.4
Exhaustion Rate:		42.9%	13	47.3%	1975.2	23.7%	1989.1
Average Duration:		11.9	50	15.4	1976.1	10.3	1980.2
AWBA:	\$238.51	\$238.20	43	\$241.46	2008.1	\$42.90	1971.3
As % of AWW:	35.3		31				
Avg. Benefits per First Payment:		\$2,756					

Financial Information	Past 12 Months	Rank
State Revenues (000):	\$109,979	41
Total Wages (000)**:	\$7,896,672	37
Total Wages (Taxable Employers)(000)**:	\$6,107,686	37
Taxable Wages (000)**:	\$4,103,898	40
Avg. Weekly Wage**:	\$676.01	44
Avg. Tax Rate on Taxable Wages (%) **:	1.49	33
Avg. Tax Rate on Total Wages (%) **:	0.43	39
Calendar Yr Taxable Wage Base:	\$9,000	31
Trust Fund (TF) Balance (000):		
(Including Loans):	\$296,858	36
TF as % of Total Wages*:	1.17	22
Interest Earned (000):	\$3,560	36
Avg. High Cost Multiple +:	1.19	12
High Cost Multiple +:	0.73	15

Labor Force	(Quarterly)	Past 12 Mos	Rank
IUR (%):	1.0	1.1	50
TUR (%):	3.3	3.2	49
Total Unemp. (000):	33.3	31.5	40
Insured Unemployed (000) ***			
Regular Programs:	9.3	10.0	44
All Programs:	14.1	11.2	42
Reciency Rates (%) ***			
Regular Programs:	28	32	36
All Programs:	42	36	28
Covered Emp. (000)**:	892	904	37
Civ. Labor Force (000):	1,000	992	37
Subj. Employers (000):	48	48	38

Extended Benefits	(Quarterly)	Past 12 Months
Extended Benefits (000):	\$0	\$0
EB First Payments:	0	0
EB Weeks Claimed:	0	0
EB Exhaustions:	0	0

Loans	Rank
Outstanding Loan Bal (000):	\$0 2
Loan per Cov Employee:	\$0 2
Loan as % of Total Wages*:	0 2

* Based on extrapolated wages for the most recent 12 months.

** Wages and Covered Employment lag the rest of the Data Summary information by six months

*** Regular programs include State UI, UCFE and UCX.

+ Refers to most recent calendar year. Fourth and first quarter issues publish measure based on extrapolated wages. Second and third quarter issues publish measure based on actual wages.

See glossary for data definitions

Note: Blank cells appearing in any section of this report indicates that information is unavailable.

UI Data Summary for Nevada

CYQ: 2008.3

Benefits	(Quarterly)	Past 12 Months	Rank	High Value : Qtr		Low Value : Qtr	
<u>Benefits Paid (000):</u>	\$128,205	\$455,651	23	\$128,205	2008.3	\$3,807	1971.2
<u>Initial Claims:</u>	59,830	209,614	27	65,819	2001.4	15,524	1989.2
<u>First Payments:</u>	29,667	107,274	27	37,987	2001.4	5,250	1973.2
<u>Weeks Claimed:</u>	501,350	1,771,285	26	511,261	2001.4	81,969	1973.3
<u>Wks Compensated:</u>	454,526	1,611,425	26	454,526	2008.3	70,349	1978.3
<u>Exhaustions:</u>	12,314	39,278	22	12,314	2008.3	1,506	1978.3
<u>Exhaustion Rate:</u>		43.7%	12	50.0%	1976.3	21.3%	1989.3
<u>Average Duration:</u>		15.0	19	16.9	1983.4	11.4	1979.2
<u>AWBA:</u>	\$289.30	\$289.85	25	\$292.19	2008.1	\$46.51	1971.2
As % of AWW:	35.5		30				
<u>Avg. Benefits per First Payment:</u>		\$4,248					

Financial Information	Past 12 Months	Rank
<u>State Revenues (000):</u>	\$358,686	25
<u>Total Wages (000)**:</u>	\$13,535,031	29
<u>Total Wages (Taxable Employers)(000)**:</u>	\$11,662,410	29
<u>Taxable Wages (000)**:</u>	\$9,948,664	17
<u>Avg. Weekly Wage**:</u>	\$815.10	19
<u>Avg. Tax Rate on Taxable Wages (%) **:</u>	1.39	40
<u>Avg. Tax Rate on Total Wages (%) **:</u>	0.77	15
<u>Calendar Yr Taxable Wage Base:</u>	\$25,400	7
<u>Trust Fund (TF) Balance (000):</u>		
(Including Loans):	\$714,598	20
<u>TF as % of Total Wages*:</u>	1.50	17
<u>Interest Earned (000):</u>	\$8,888	17
<u>Avg. High Cost Multiple +:</u>	1.02	18
<u>High Cost Multiple +:</u>	0.63	21

Labor Force	(Quarterly)	Past 12 Mos	Rank
<u>IUR (%):</u>	3.1	2.7	8
<u>TUR (%):</u>	7.0	6.0	10
<u>Total Unemp. (000):</u>	98.2	83.2	31
Insured Unemployed (000) ***			
<u>Regular Programs:</u>	38.9	34.3	26
<u>All Programs:</u>	49.8	37.1	26
Reciency Rates (%) ***			
<u>Regular Programs:</u>	40	41	11
<u>All Programs:</u>	51	45	12
<u>Covered Emp. (000)**:</u>	1,247	1,265	32
<u>Civ. Labor Force (000):</u>	1,409	1,383	32
<u>Subj. Employers (000):</u>	56	59	35

Extended Benefits	(Quarterly)	Past 12 Months
<u>Extended Benefits (000):</u>	\$0	\$0
EB First Payments:	0	0
EB Weeks Claimed:	0	0
EB Exhaustions:	0	0

Loans	Rank
<u>Outstanding Loan Bal (000):</u>	\$0 2
Loan per Cov Employee:	\$0 2
Loan as % of Total Wages*:	0 2

* Based on extrapolated wages for the most recent 12 months.

** Wages and Covered Employment lag the rest of the Data Summary information by six months

*** Regular programs include State UI, UCFE and UCX.

+ Refers to most recent calendar year. Fourth and first quarter issues publish measure based on extrapolated wages. Second and third quarter issues publish measure based on actual wages.

See glossary for data definitions

Note: Blank cells appearing in any section of this report indicates that information is unavailable.

UI Data Summary for New Hampshire

CYQ: 2008.3

Benefits	(Quarterly)	Past 12 Months	Rank	High Value : Qtr		Low Value : Qtr	
<u>Benefits Paid (000):</u>	\$25,684	\$103,777	45	\$34,830	2003.1	\$1,519	1972.4
<u>Initial Claims:</u>	14,009	59,516	46	37,881	1974.4	5,974	2000.2
<u>First Payments:</u>	6,828	29,889	44	31,034	1975.2	2,086	1999.4
<u>Weeks Claimed:</u>	113,258	452,321	47	266,020	1975.1	24,573	1987.4
<u>Wks Compensated:</u>	98,459	392,887	45	240,574	1975.1	16,768	1987.4
<u>Exhaustions:</u>	1,877	5,591	47	5,519	1991.4	1	1985.3
<u>Exhaustion Rate:</u>		21.1%	51	33.8%	2003.2	1.8%	1988.1
<u>Average Duration:</u>		13.1	43	18.0	2004.1	5.4	1988.1
<u>AWBA:</u>	\$270.29	\$271.93	34	\$278.39	2007.4	\$45.06	1971.2
As % of AWW:	32.0		40				
<u>Avg. Benefits per First Payment:</u>		\$3,472					

Financial Information	Past 12 Months	Rank
<u>State Revenues (000):</u>	\$51,776	50
<u>Total Wages (000)**:</u>	\$6,859,649	39
<u>Total Wages (Taxable Employers)(000)**:</u>	\$5,423,868	39
<u>Taxable Wages (000)**:</u>	\$2,839,248	46
<u>Avg. Weekly Wage**:</u>	\$844.72	15
<u>Avg. Tax Rate on Taxable Wages (%) **:</u>	1.23	43
<u>Avg. Tax Rate on Total Wages (%) **:</u>	0.26	51
<u>Calendar Yr Taxable Wage Base:</u>	\$8,000	41
<u>Trust Fund (TF) Balance (000):</u>		
(Including Loans):	\$196,300	41
<u>TF as % of Total Wages*:</u>	0.90	27
<u>Interest Earned (000):</u>	\$2,462	42
<u>Avg. High Cost Multiple +:</u>	1.19	12
<u>High Cost Multiple +:</u>	0.44	27

Labor Force	(Quarterly)	Past 12 Mos	Rank
<u>IUR (%):</u>	1.5	1.4	43
<u>TUR (%):</u>	3.9	3.8	45
<u>Total Unemp. (000):</u>	29.3	28.1	44
Insured Unemployed (000) ***			
<u>Regular Programs:</u>	9.0	9.0	45
<u>All Programs:</u>	10.6	9.4	45
Reciency Rates (%) ***			
<u>Regular Programs:</u>	31	32	28
<u>All Programs:</u>	36	33	35
<u>Covered Emp. (000)**:</u>	614	623	41
<u>Civ. Labor Force (000):</u>	751	743	41
<u>Subj. Employers (000):</u>	40	41	41

Extended Benefits	(Quarterly)	Past 12 Months
<u>Extended Benefits (000):</u>	\$0	\$0
EB First Payments:	0	0
EB Weeks Claimed:	0	0
EB Exhaustions:	0	0

Loans	Rank
<u>Outstanding Loan Bal (000):</u>	\$0 2
Loan per Cov Employee:	\$0 2
Loan as % of Total Wages*:	0 2

* Based on extrapolated wages for the most recent 12 months.

** Wages and Covered Employment lag the rest of the Data Summary information by six months

*** Regular programs include State UI, UCFE and UCX.

+ Refers to most recent calendar year. Fourth and first quarter issues publish measure based on extrapolated wages. Second and third quarter issues publish measure based on actual wages.

See glossary for data definitions

Note: Blank cells appearing in any section of this report indicates that information is unavailable.

UI Data Summary for **New Jersey**

CYQ: 2008.3

Benefits	(Quarterly)	Past 12 Months	Rank	High Value : Qtr		Low Value : Qtr	
Benefits Paid (000):	\$579,119	\$2,190,072	4	\$619,079	2008.1	\$64,334	1972.4
Initial Claims:	137,358	592,385	12	290,136	1975.1	93,677	1987.3
First Payments:	87,597	332,949	7	185,783	1975.1	45,958	1988.2
Weeks Claimed:	1,799,110	6,617,770	7	2,824,241	1975.1	762,372	1987.4
Wks Compensated:	1,632,634	6,090,910	6	2,724,700	1975.1	715,819	1987.4
Exhaustions:	41,900	150,972	6	65,321	1975.2	18,202	1988.4
Exhaustion Rate:		48.2%	4	58.7%	2003.1	33.3%	1988.3
Average Duration:		18.3	2	19.5	1993.1	13.7	1974.1
AWBA:	\$366.34	\$372.61	3	\$381.16	2008.2	\$61.32	1971.1
As % of AWW:	35.2		33				
Avg. Benefits per First Payment:		\$6,578					

Financial Information	Past 12 Months	Rank
State Revenues (000):	\$1,957,272	5
Total Wages (000)**:	\$56,789,693	7
Total Wages (Taxable Employers)(000)**:	\$46,884,666	7
Taxable Wages (000)**:	\$34,294,236	3
Avg. Weekly Wage**:	\$1,040.81	5
Avg. Tax Rate on Taxable Wages (%) **:	2.03	21
Avg. Tax Rate on Total Wages (%) **:	0.89	9
Calendar Yr Taxable Wage Base:	\$27,700	5
Trust Fund (TF) Balance (000):		
(Including Loans):	\$792,885	16
TF as % of Total Wages*:	0.45	42
Interest Earned (000):	\$10,413	13
Avg. High Cost Multiple +:	0.21	49
High Cost Multiple +:	0.11	49

Labor Force	(Quarterly)	Past 12 Mos	Rank
IUR (%):	3.5	3.2	3
TUR (%):	5.7	5.0	22
Total Unemp. (000):	260.5	224.7	11
Insured Unemployed (000) ***			
Regular Programs:	135.4	123.8	7
All Programs:	195.5	138.8	6
Reciency Rates (%) ***			
Regular Programs:	52	55	2
All Programs:	75	62	1
Covered Emp. (000)**:	3,863	3,906	11
Civ. Labor Force (000):	4,552	4,501	11
Subj. Employers (000):	255	247	7

Extended Benefits	(Quarterly)	Past 12 Months
Extended Benefits (000):	\$0	\$0
EB First Payments:	0	0
EB Weeks Claimed:	0	0
EB Exhaustions:	0	0

Loans	Rank
Outstanding Loan Bal (000):	\$0 2
Loan per Cov Employee:	\$0 2
Loan as % of Total Wages*:	0 2

* Based on extrapolated wages for the most recent 12 months.

** Wages and Covered Employment lag the rest of the Data Summary information by six months

*** Regular programs include State UI, UCFE and UCX.

+ Refers to most recent calendar year. Fourth and first quarter issues publish measure based on extrapolated wages. Second and third quarter issues publish measure based on actual wages.

See glossary for data definitions

Note: Blank cells appearing in any section of this report indicates that information is unavailable.

UI Data Summary for New Mexico

CYQ: 2008.3

Benefits	(Quarterly)	Past 12 Months	Rank	High Value : Qtr		Low Value : Qtr	
<u>Benefits Paid (000):</u>	\$39,750	\$150,067	40	\$39,750	2008.3	\$2,686	1972.3
<u>Initial Claims:</u>	15,819	60,139	42	25,921	1983.1	9,060	2006.1
<u>First Payments:</u>	8,559	33,580	39	12,622	1975.1	3,613	1972.2
<u>Weeks Claimed:</u>	175,550	649,073	37	275,784	1983.1	82,983	1972.3
<u>Wks Compensated:</u>	142,980	551,271	40	220,164	1983.1	58,692	1972.3
<u>Exhaustions:</u>	3,838	14,054	38	5,308	1983.1	994	1978.4
<u>Exhaustion Rate:</u>		45.2%	9	46.4%	1983.2	21.8%	1979.4
<u>Average Duration:</u>		16.4	11	19.3	1976.1	14.1	1980.2
<u>AWBA:</u>	\$280.73	\$274.15	30	\$280.73	2008.3	\$44.69	1971.2
As % of AWW:	40.8		12				
<u>Avg. Benefits per First Payment:</u>		\$4,469					

Financial Information	Past 12 Months	Rank
<u>State Revenues (000):</u>	\$87,426	44
<u>Total Wages (000)**:</u>	\$7,177,437	38
<u>Total Wages (Taxable Employers)(000)**:</u>	\$5,555,953	38
<u>Taxable Wages (000)**:</u>	\$4,820,083	36
<u>Avg. Weekly Wage**:</u>	\$688.50	41
<u>Avg. Tax Rate on Taxable Wages (%) **:</u>	0.96	48
<u>Avg. Tax Rate on Total Wages (%) **:</u>	0.48	33
<u>Calendar Yr Taxable Wage Base:</u>	\$19,900	14
<u>Trust Fund (TF) Balance (000):</u>		
(Including Loans):	\$543,833	26
<u>TF as % of Total Wages*:</u>	2.38	10
<u>Interest Earned (000):</u>	\$6,520	26
<u>Avg. High Cost Multiple +:</u>	1.88	2
<u>High Cost Multiple +:</u>	1.6	1

Labor Force	(Quarterly)	Past 12 Mos	Rank
<u>IUR (%):</u>	1.8	1.6	35
<u>TUR (%):</u>	4.4	3.7	41
<u>Total Unemp. (000):</u>	42.1	35.3	38
<u>Insured Unemployed (000) ***</u>			
<u>Regular Programs:</u>	14.0	13.0	37
<u>All Programs:</u>	20.6	14.7	37
<u>Reciency Rates (%) ***</u>			
<u>Regular Programs:</u>	33	37	24
<u>All Programs:</u>	49	42	15
<u>Covered Emp. (000)**:</u>	790	793	38
<u>Civ. Labor Force (000):</u>	962	950	38
<u>Subj. Employers (000):</u>	44	45	39

Extended Benefits	(Quarterly)	Past 12 Months
<u>Extended Benefits (000):</u>	\$0	\$0
EB First Payments:	0	0
EB Weeks Claimed:	0	0
EB Exhaustions:	0	0

Loans	Rank
<u>Outstanding Loan Bal (000):</u>	\$0 2
Loan per Cov Employee:	\$0 2
Loan as % of Total Wages*:	0 2

* Based on extrapolated wages for the most recent 12 months.

** Wages and Covered Employment lag the rest of the Data Summary information by six months

*** Regular programs include State UI, UCFE and UCX.

+ Refers to most recent calendar year. Fourth and first quarter issues publish measure based on extrapolated wages. Second and third quarter issues publish measure based on actual wages.

See glossary for data definitions

Note: Blank cells appearing in any section of this report indicates that information is unavailable.

UI Data Summary for New York

CYQ: 2008.3

Benefits	(Quarterly)	Past 12 Months	Rank	High Value : Qtr		Low Value : Qtr	
<u>Benefits Paid (000):</u>	\$655,216	\$2,533,125	2	\$933,140	2002.1	\$126,179	1973.4
<u>Initial Claims:</u>	278,329	1,099,940	3	674,249	1974.4	188,751	2000.3
<u>First Payments:</u>	139,332	513,607	3	355,805	1975.1	78,936	1985.2
<u>Weeks Claimed:</u>	2,602,498	9,906,492	2	5,968,340	1975.1	1,728,933	1999.4
<u>Wks Compensated:</u>	2,234,583	8,640,963	2	5,422,159	1975.1	1,543,669	2000.2
<u>Exhaustions:</u>	51,409	176,789	3	119,461	1975.3	36,374	1988.1
<u>Exhaustion Rate:</u>		37.1%	26	59.2%	2003.2	29.2%	1974.3
<u>Average Duration:</u>		16.8	9	23.0	1976.1	15.4	2001.2
<u>AWBA:</u>	\$304.62	\$304.94	17	\$307.07	2008.2	\$57.80	1971.3
As % of AWW:	26.6		50				
<u>Avg. Benefits per First Payment:</u>		\$4,932					

Financial Information	Past 12 Months	Rank
<u>State Revenues (000):</u>	\$2,316,834	2
<u>Total Wages (000)**:</u>	\$153,201,610	2
<u>Total Wages (Taxable Employers)(000)**:</u>	\$125,995,505	2
<u>Taxable Wages (000)**:</u>	\$38,798,382	4
<u>Avg. Weekly Wage**:</u>	\$1,144.11	2
<u>Avg. Tax Rate on Taxable Wages (%) **:</u>	3.45	5
<u>Avg. Tax Rate on Total Wages (%) **:</u>	0.55	30
<u>Calendar Yr Taxable Wage Base:</u>	\$8,500	35
<u>Trust Fund (TF) Balance (000):</u>		
(Including Loans):	\$809,721	15
<u>TF as % of Total Wages*:</u>	0.20	50
<u>Interest Earned (000):</u>	\$7,481	22
<u>Avg. High Cost Multiple +:</u>	0.09	52
<u>High Cost Multiple +:</u>	0.04	52

Labor Force	(Quarterly)	Past 12 Mos	Rank
<u>IUR (%):</u>	2.4	2.3	20
<u>TUR (%):</u>	5.5	5.0	24
<u>Total Unemp. (000):</u>	535.3	482.8	4
Insured Unemployed (000) ***			
<u>Regular Programs:</u>	201.8	191.3	2
<u>All Programs:</u>	276.9	210.1	2
Reciency Rates (%) ***			
<u>Regular Programs:</u>	38	40	13
<u>All Programs:</u>	52	44	10
<u>Covered Emp. (000)**:</u>	8,394	8,456	3
<u>Civ. Labor Force (000):</u>	9,686	9,578	3
<u>Subj. Employers (000):</u>	492	493	2

Extended Benefits	(Quarterly)	Past 12 Months
<u>Extended Benefits (000):</u>	\$0	\$0
EB First Payments:	0	0
EB Weeks Claimed:	0	0
EB Exhaustions:	0	0

Loans	Rank
<u>Outstanding Loan Bal (000):</u>	\$0 2
Loan per Cov Employee:	\$0 2
Loan as % of Total Wages*:	0 2

* Based on extrapolated wages for the most recent 12 months.

** Wages and Covered Employment lag the rest of the Data Summary information by six months

*** Regular programs include State UI, UCFE and UCX.

+ Refers to most recent calendar year. Fourth and first quarter issues publish measure based on extrapolated wages. Second and third quarter issues publish measure based on actual wages.

See glossary for data definitions

Note: Blank cells appearing in any section of this report indicates that information is unavailable.

UI Data Summary for North Carolina

CYQ: 2008.3

Benefits	(Quarterly)	Past 12 Months	Rank	High Value : Qtr		Low Value : Qtr	
<u>Benefits Paid (000):</u>	\$316,644	\$1,103,087	11	\$347,056	2002.1	\$5,433	1973.4
<u>Initial Claims:</u>	219,065	769,364	7	603,068	1982.1	39,534	1972.4
<u>First Payments:</u>	82,227	288,700	9	247,972	1975.1	13,856	1972.4
<u>Weeks Claimed:</u>	1,375,261	4,843,800	10	2,374,887	1975.1	177,061	1973.4
<u>Wks Compensated:</u>	1,131,478	4,011,189	10	1,945,163	1975.1	131,814	1973.4
<u>Exhaustions:</u>	34,441	117,303	9	39,392	1975.2	1,894	1973.4
<u>Exhaustion Rate:</u>		45.8%	8	45.8%	2008.3	12.5%	1989.1
<u>Average Duration:</u>		13.9	33	14.2	2004.2	7.5	1988.4
<u>AWBA:</u>	\$289.05	\$284.60	26	\$289.05	2008.3	\$38.77	1972.2
As % of AWW:	38.8		24				
<u>Avg. Benefits per First Payment:</u>		\$3,821					

Financial Information	Past 12 Months	Rank
<u>State Revenues (000):</u>	\$924,136	11
<u>Total Wages (000)**:</u>	\$40,561,920	13
<u>Total Wages (Taxable Employers)(000)**:</u>	\$33,200,969	13
<u>Taxable Wages (000)**:</u>	\$25,226,890	8
<u>Avg. Weekly Wage**:</u>	\$744.98	28
<u>Avg. Tax Rate on Taxable Wages (%) **:</u>	1.84	25
<u>Avg. Tax Rate on Total Wages (%) **:</u>	0.81	12
<u>Calendar Yr Taxable Wage Base:</u>	\$18,600	15
<u>Trust Fund (TF) Balance (000):</u>		
(Including Loans):	\$439,808	30
<u>TF as % of Total Wages*:</u>	0.34	45
<u>Interest Earned (000):</u>	\$5,841	29
<u>Avg. High Cost Multiple +:</u>	0.23	47
<u>High Cost Multiple +:</u>	0.13	48

Labor Force	(Quarterly)	Past 12 Mos	Rank
<u>IUR (%):</u>	2.7	2.4	14
<u>TUR (%):</u>	6.7	5.6	12
<u>Total Unemp. (000):</u>	310.8	254.8	10
Insured Unemployed (000) ***			
<u>Regular Programs:</u>	107.5	94.6	10
<u>All Programs:</u>	148.4	104.8	9
Reciency Rates (%) ***			
<u>Regular Programs:</u>	35	37	19
<u>All Programs:</u>	48	41	17
<u>Covered Emp. (000)**:</u>	3,984	4,012	9
<u>Civ. Labor Force (000):</u>	4,610	4,553	10
<u>Subj. Employers (000):</u>	203	202	11

Extended Benefits	(Quarterly)	Past 12 Months
<u>Extended Benefits (000):</u>	\$0	\$0
EB First Payments:	0	0
EB Weeks Claimed:	0	0
EB Exhaustions:	0	0

Loans	Rank
<u>Outstanding Loan Bal (000):</u>	\$0 2
Loan per Cov Employee:	\$0 2
Loan as % of Total Wages*:	0 2

* Based on extrapolated wages for the most recent 12 months.

** Wages and Covered Employment lag the rest of the Data Summary information by six months

*** Regular programs include State UI, UCFE and UCX.

+ Refers to most recent calendar year. Fourth and first quarter issues publish measure based on extrapolated wages. Second and third quarter issues publish measure based on actual wages.

See glossary for data definitions

Note: Blank cells appearing in any section of this report indicates that information is unavailable.

UI Data Summary for North Dakota

CYQ: 2008.3

Benefits	(Quarterly)	Past 12 Months	Rank	High Value : Qtr		Low Value : Qtr	
Benefits Paid (000):	\$6,619	\$41,522	51	\$23,730	1983.1	\$620	1971.3
Initial Claims:	5,989	25,532	50	19,325	1982.4	2,017	1971.3
First Payments:	2,750	13,215	50	11,508	1983.1	929	1971.3
Weeks Claimed:	30,521	174,783	50	179,165	1983.1	19,179	1971.3
Wks Compensated:	24,362	148,740	51	171,825	1983.1	14,351	1971.3
Exhaustions:	532	4,323	51	4,709	1983.2	382	1971.4
Exhaustion Rate:		35.7%	33	47.0%	1983.2	23.0%	1979.1
Average Duration:		11.3	52	15.9	1987.1	9.8	1997.2
AWBA:	\$273.79	\$281.01	32	\$289.27	2008.1	\$43.75	1971.3
As % of AWW:	43.1		7				
Avg. Benefits per First Payment:		\$3,142					

Financial Information	Past 12 Months	Rank
State Revenues (000):	\$49,706	51
Total Wages (000)**:	\$2,768,096	50
Total Wages (Taxable Employers)(000)**:	\$2,081,187	51
Taxable Wages (000)**:	\$1,841,140	47
Avg. Weekly Wage**:	\$635.10	49
Avg. Tax Rate on Taxable Wages (%) **:	1.05	46
Avg. Tax Rate on Total Wages (%) **:	0.58	29
Calendar Yr Taxable Wage Base:	\$22,100	11
Trust Fund (TF) Balance (000):		
(Including Loans):	\$137,638	46
TF as % of Total Wages*:	1.57	16
Interest Earned (000):	\$1,610	48
Avg. High Cost Multiple +:	0.79	27
High Cost Multiple +:	0.71	18

Labor Force	(Quarterly)	Past 12 Mos	Rank
IUR (%):	0.8	1.0	51
TUR (%):	3.1	3.3	50
Total Unemp. (000):	11.8	12.1	51
Insured Unemployed (000) ***			
Regular Programs:	2.6	3.5	50
All Programs:	3.1	3.6	50
Reciency Rates (%) ***			
Regular Programs:	22	29	49
All Programs:	26	30	50
Covered Emp. (000)**:	331	334	49
Civ. Labor Force (000):	380	370	48
Subj. Employers (000):	20	20	51

Extended Benefits	(Quarterly)	Past 12 Months
Extended Benefits (000):	\$0	\$0
EB First Payments:	0	0
EB Weeks Claimed:	0	0
EB Exhaustions:	0	0

Loans	Rank
Outstanding Loan Bal (000):	\$0 2
Loan per Cov Employee:	\$0 2
Loan as % of Total Wages*:	0 2

* Based on extrapolated wages for the most recent 12 months.

** Wages and Covered Employment lag the rest of the Data Summary information by six months

*** Regular programs include State UI, UCFE and UCX.

+ Refers to most recent calendar year. Fourth and first quarter issues publish measure based on extrapolated wages. Second and third quarter issues publish measure based on actual wages.

See glossary for data definitions

Note: Blank cells appearing in any section of this report indicates that information is unavailable.

UI Data Summary for Ohio

CYQ: 2008.3

Benefits	(Quarterly)	Past 12 Months	Rank	High Value : Qtr		Low Value : Qtr	
<u>Benefits Paid (000):</u>	\$341,161	\$1,422,137	10	\$479,209	2002.1	\$19,670	1973.3
<u>Initial Claims:</u>	199,538	746,121	8	491,161	1982.4	77,739	1973.2
<u>First Payments:</u>	72,229	315,085	10	262,818	1975.1	29,637	1973.2
<u>Weeks Claimed:</u>	1,447,034	5,900,842	9	3,509,353	1982.1	469,902	1973.3
<u>Wks Compensated:</u>	1,147,031	4,836,088	9	3,169,009	1982.1	351,318	1973.4
<u>Exhaustions:</u>	27,065	86,959	11	72,068	1982.3	6,345	1973.4
<u>Exhaustion Rate:</u>		30.4%	44	44.9%	1983.1	16.5%	2000.4
<u>Average Duration:</u>		15.4	16	18.7	1983.4	10.2	1974.1
<u>AWBA:</u>	\$302.51	\$298.78	18	\$302.51	2008.3	\$49.28	1971.2
As % of AWW:	39.7		18				
<u>Avg. Benefits per First Payment:</u>		\$4,514					

Financial Information	Past 12 Months	Rank
<u>State Revenues (000):</u>	\$1,099,404	9
<u>Total Wages (000)**:</u>	\$52,687,940	8
<u>Total Wages (Taxable Employers)(000)**:</u>	\$41,746,554	8
<u>Taxable Wages (000)**:</u>	\$24,901,495	11
<u>Avg. Weekly Wage**:</u>	\$762.76	23
<u>Avg. Tax Rate on Taxable Wages (%) **:</u>	2.53	15
<u>Avg. Tax Rate on Total Wages (%) **:</u>	0.64	26
<u>Calendar Yr Taxable Wage Base:</u>	\$9,000	31
<u>Trust Fund (TF) Balance (000):</u>		
(Including Loans):	\$333,956	35
<u>TF as % of Total Wages*:</u>	0.20	49
<u>Interest Earned (000):</u>	\$4,369	34
<u>Avg. High Cost Multiple +:</u>	0.12	51
<u>High Cost Multiple +:</u>	0.09	50

Labor Force	(Quarterly)	Past 12 Mos	Rank
<u>IUR (%):</u>	2.2	2.2	23
<u>TUR (%):</u>	7.1	6.2	7
<u>Total Unemp. (000):</u>	429.2	370.9	7
Insured Unemployed (000) ***			
<u>Regular Programs:</u>	113.5	115.5	9
<u>All Programs:</u>	145.2	123.4	10
Reciency Rates (%) ***			
<u>Regular Programs:</u>	26	31	40
<u>All Programs:</u>	34	33	39
<u>Covered Emp. (000)**:</u>	5,112	5,224	7
<u>Civ. Labor Force (000):</u>	6,048	5,989	7
<u>Subj. Employers (000):</u>	228	228	8

Extended Benefits	(Quarterly)	Past 12 Months
<u>Extended Benefits (000):</u>	\$0	\$0
EB First Payments:	0	0
EB Weeks Claimed:	0	0
EB Exhaustions:	0	0

Loans	Rank
<u>Outstanding Loan Bal (000):</u>	\$0 2
Loan per Cov Employee:	\$0 2
Loan as % of Total Wages*:	0 2

* Based on extrapolated wages for the most recent 12 months.

** Wages and Covered Employment lag the rest of the Data Summary information by six months

*** Regular programs include State UI, UCFE and UCX.

+ Refers to most recent calendar year. Fourth and first quarter issues publish measure based on extrapolated wages. Second and third quarter issues publish measure based on actual wages.

See glossary for data definitions

Note: Blank cells appearing in any section of this report indicates that information is unavailable.

UI Data Summary for **Oklahoma**

CYQ: 2008.3

Benefits	(Quarterly)	Past 12 Months	Rank	High Value : Qtr		Low Value : Qtr	
Benefits Paid (000):	\$48,974	\$168,072	36	\$77,707	1983.1	\$5,871	1972.3
Initial Claims:	27,763	108,310	35	72,345	1982.3	19,985	2000.2
First Payments:	11,676	44,073	35	40,001	1982.4	7,273	1978.3
Weeks Claimed:	215,360	766,231	35	623,327	1983.1	130,917	1978.3
Wks Compensated:	182,023	650,362	35	552,703	1983.1	86,510	1978.3
Exhaustions:	4,361	15,571	36	22,782	1983.1	2,430	1998.4
Exhaustion Rate:		37.9%	23	59.8%	1983.2	24.7%	2000.4
Average Duration:		14.8	23	17.4	2004.2	10.3	1982.2
AWBA:	\$273.98	\$264.27	31	\$278.55	2008.1	\$14.70	1971.1
As % of AWW:	40.5		13				
Avg. Benefits per First Payment:		\$3,813					

Financial Information	Past 12 Months	Rank
State Revenues (000):	\$166,021	35
Total Wages (000)**:	\$13,591,659	31
Total Wages (Taxable Employers)(000)**:	\$11,532,800	31
Taxable Wages (000)**:	\$8,752,432	28
Avg. Weekly Wage**:	\$676.43	43
Avg. Tax Rate on Taxable Wages (%) **:	0.95	49
Avg. Tax Rate on Total Wages (%) **:	0.37	41
Calendar Yr Taxable Wage Base:	\$13,600	19
Trust Fund (TF) Balance (000):		
(Including Loans):	\$856,198	13
TF as % of Total Wages*:	1.84	14
Interest Earned (000):	\$10,245	14
Avg. High Cost Multiple +:	1.51	6
High Cost Multiple +:	1.39	3

Labor Force	(Quarterly)	Past 12 Mos	Rank
IUR (%):	1.2	1.0	47
TUR (%):	3.8	3.8	46
Total Unemp. (000):	66.3	65.7	34
Insured Unemployed (000) ***			
Regular Programs:	17.2	15.2	35
All Programs:	22.2	16.5	35
Reciency Rates (%) ***			
Regular Programs:	26	23	41
All Programs:	34	25	41
Covered Emp. (000)**:	1,504	1,498	29
Civ. Labor Force (000):	1,751	1,735	29
Subj. Employers (000):	79	81	29

Extended Benefits	(Quarterly)	Past 12 Months
Extended Benefits (000):	\$0	\$0
EB First Payments:	0	0
EB Weeks Claimed:	0	0
EB Exhaustions:	0	0

Loans	Rank
Outstanding Loan Bal (000):	\$0 2
Loan per Cov Employee:	\$0 2
Loan as % of Total Wages*:	0 2

* Based on extrapolated wages for the most recent 12 months.

** Wages and Covered Employment lag the rest of the Data Summary information by six months

*** Regular programs include State UI, UCFE and UCX.

+ Refers to most recent calendar year. Fourth and first quarter issues publish measure based on extrapolated wages. Second and third quarter issues publish measure based on actual wages.

See glossary for data definitions

Note: Blank cells appearing in any section of this report indicates that information is unavailable.

UI Data Summary for Oregon

CYQ: 2008.3

Benefits	(Quarterly)	Past 12 Months	Rank	High Value : Qtr		Low Value : Qtr	
				Value	Year	Value	Year
Benefits Paid (000):	\$176,749	\$696,956	16	\$234,369	2002.1	\$7,771	1972.3
Initial Claims:	98,076	420,990	17	153,754	2001.4	39,945	1972.3
First Payments:	37,287	165,005	17	61,610	2003.1	11,218	1972.3
Weeks Claimed:	692,663	2,769,697	17	1,050,912	1982.1	236,902	1972.3
Wks Compensated:	599,785	2,399,147	17	978,274	2003.1	171,876	1972.3
Exhaustions:	14,549	48,823	17	23,099	2002.2	2,889	1973.4
Exhaustion Rate:		33.1%	37	46.9%	2003.2	18.4%	1979.4
Average Duration:		14.5	24	18.0	2002.4	12.0	1980.2
AWBA:	\$300.95	\$296.69	20	\$300.95	2008.3	\$42.83	1971.2
As % of AWW:	39.6		19				
Avg. Benefits per First Payment:		\$4,224					

Financial Information	Past 12 Months	Rank
State Revenues (000):	\$804,084	14
Total Wages (000)**:	\$16,777,239	26
Total Wages (Taxable Employers)(000)**:	\$13,179,900	27
Taxable Wages (000)**:	\$11,646,820	15
Avg. Weekly Wage**:	\$759.53	25
Avg. Tax Rate on Taxable Wages (%) **:	1.85	24
Avg. Tax Rate on Total Wages (%) **:	1.11	3
Calendar Yr Taxable Wage Base:	\$30,200	4
Trust Fund (TF) Balance (000):		
(Including Loans):	\$2,121,559	2
TF as % of Total Wages*:	3.92	1
Interest Earned (000):	\$25,325	3
Avg. High Cost Multiple +:	1.46	8
High Cost Multiple +:	1.14	6

Labor Force	(Quarterly)	Past 12 Mos	Rank
IUR (%):	3.2	3.2	6
TUR (%):	5.9	5.7	20
Total Unemp. (000):	116.7	110.4	28
Insured Unemployed (000) ***			
Regular Programs:	54.5	54.6	17
All Programs:	67.9	58.0	19
Reciency Rates (%) ***			
Regular Programs:	47	49	7
All Programs:	58	52	7
Covered Emp. (000)**:	1,675	1,701	27
Civ. Labor Force (000):	1,970	1,947	27
Subj. Employers (000):	109	111	23

Extended Benefits	(Quarterly)	Past 12 Months
Extended Benefits (000):	\$0	\$0
EB First Payments:	0	0
EB Weeks Claimed:	0	0
EB Exhaustions:	0	0

Loans	Rank
Outstanding Loan Bal (000):	\$0 2
Loan per Cov Employee:	\$0 2
Loan as % of Total Wages*:	0 2

* Based on extrapolated wages for the most recent 12 months.

** Wages and Covered Employment lag the rest of the Data Summary information by six months

*** Regular programs include State UI, UCFE and UCX.

+ Refers to most recent calendar year. Fourth and first quarter issues publish measure based on extrapolated wages. Second and third quarter issues publish measure based on actual wages.

See glossary for data definitions

Note: Blank cells appearing in any section of this report indicates that information is unavailable.

UI Data Summary for Pennsylvania

CYQ: 2008.3

Benefits	(Quarterly)	Past 12 Months	Rank	High Value : Qtr		Low Value : Qtr	
<u>Benefits Paid (000):</u>	\$635,847	\$2,549,107	3	\$844,154	2003.1	\$65,467	1971.3
<u>Initial Claims:</u>	286,481	1,310,037	2	595,313	1982.4	188,957	2000.3
<u>First Payments:</u>	116,630	498,493	5	294,655	1975.1	70,828	1973.2
<u>Weeks Claimed:</u>	2,386,583	9,489,763	4	4,645,096	1983.1	1,301,090	1988.4
<u>Wks Compensated:</u>	2,067,427	8,170,876	4	4,309,149	1983.1	1,122,944	1988.4
<u>Exhaustions:</u>	45,333	148,938	4	77,689	1983.1	15,144	1973.4
<u>Exhaustion Rate:</u>		31.9%	40	38.3%	1994.1	16.7%	1980.1
<u>Average Duration:</u>		16.4	12	20.9	1983.3	13.5	1979.3
<u>AWBA:</u>	\$325.06	\$331.69	8	\$336.59	2008.1	\$50.64	1971.3
As % of AWW:	39.2		20				
<u>Avg. Benefits per First Payment:</u>		\$5,114					

Financial Information	Past 12 Months	Rank
<u>State Revenues (000):</u>	\$2,214,250	3
<u>Total Wages (000)**:</u>	\$61,621,989	6
<u>Total Wages (Taxable Employers)(000)**:</u>	\$48,366,770	6
<u>Taxable Wages (000)**:</u>	\$25,043,689	12
<u>Avg. Weekly Wage**:</u>	\$829.78	18
<u>Avg. Tax Rate on Taxable Wages (%) **:</u>	4.78	1
<u>Avg. Tax Rate on Total Wages (%) **:</u>	1.02	7
<u>Calendar Yr Taxable Wage Base:</u>	\$8,000	41
<u>Trust Fund (TF) Balance (000):</u>		
(Including Loans):	\$1,483,767	8
<u>TF as % of Total Wages*:</u>	0.78	31
<u>Interest Earned (000):</u>	\$19,380	7
<u>Avg. High Cost Multiple +:</u>	0.30	42
<u>High Cost Multiple +:</u>	0.25	39

Labor Force	(Quarterly)	Past 12 Mos	Rank
<u>IUR (%):</u>	3.3	3.3	4
<u>TUR (%):</u>	5.5	5.0	25
<u>Total Unemp. (000):</u>	355.9	320.8	8
Insured Unemployed (000) ***			
<u>Regular Programs:</u>	180.9	181.2	4
<u>All Programs:</u>	242.7	196.7	4
Reciency Rates (%) ***			
<u>Regular Programs:</u>	51	56	4
<u>All Programs:</u>	68	61	2
<u>Covered Emp. (000)**:</u>	5,488	5,559	6
<u>Civ. Labor Force (000):</u>	6,466	6,361	6
<u>Subj. Employers (000):</u>	282	288	6

Extended Benefits	(Quarterly)	Past 12 Months
<u>Extended Benefits (000):</u>	\$0	\$0
EB First Payments:	0	0
EB Weeks Claimed:	0	0
EB Exhaustions:	0	0

Loans	Rank
<u>Outstanding Loan Bal (000):</u>	\$0 2
Loan per Cov Employee:	\$0 2
Loan as % of Total Wages*:	0 2

* Based on extrapolated wages for the most recent 12 months.

** Wages and Covered Employment lag the rest of the Data Summary information by six months

*** Regular programs include State UI, UCFE and UCX.

+ Refers to most recent calendar year. Fourth and first quarter issues publish measure based on extrapolated wages. Second and third quarter issues publish measure based on actual wages.

See glossary for data definitions

Note: Blank cells appearing in any section of this report indicates that information is unavailable.

UI Data Summary for **Puerto Rico**

CYQ: 2008.3

Benefits	(Quarterly)	Past 12 Months	Rank	High Value : Qtr		Low Value : Qtr	
Benefits Paid (000):	\$59,427	\$211,590	34	\$67,074	2001.3	\$9,234	1971.2
Initial Claims:	61,236	176,100	26	132,965	2006.2	33,814	2007.4
First Payments:	31,415	105,717	24	46,272	1998.4	6,319	1984.1
Weeks Claimed:	596,600	2,136,701	22	922,160	1975.2	341,054	1988.2
Wks Compensated:	545,777	1,933,331	21	671,786	1994.2	198,213	1983.2
Exhaustions:	11,180	47,309	26	26,319	1976.3	3,103	1983.2
Exhaustion Rate:		47.7%	6	98.6%	1984.3	30.3%	1982.2
Average Duration:		18.3	3	39.4	1984.3	13.8	1989.4
AWBA:	\$111.47	\$112.48	53	\$113.44	2008.2	\$29.70	1971.1
As % of AWW:	23.8		52				
Avg. Benefits per First Payment:		\$2,001					

Financial Information	Past 12 Months	Rank
State Revenues (000):	\$180,930	33
Total Wages (000)**:	\$6,135,406	40
Total Wages (Taxable Employers)(000)**:	\$4,166,274	44
Taxable Wages (000)**:	\$2,922,997	43
Avg. Weekly Wage**:	\$468.56	53
Avg. Tax Rate on Taxable Wages (%) **:	3.18	8
Avg. Tax Rate on Total Wages (%) **:	1.06	6
Calendar Yr Taxable Wage Base:	\$7,000	49
Trust Fund (TF) Balance (000):		
(Including Loans):	\$539,026	27
TF as % of Total Wages*:	3.24	4
Interest Earned (000):	\$6,449	27
Avg. High Cost Multiple +:	1.00	19
High Cost Multiple +:	0.73	15

Labor Force	(Quarterly)	Past 12 Mos	Rank
IUR (%):	4.7	4.3	1
TUR (%):	12.3	11.1	1
Total Unemp. (000):	167.6	152.2	20
Insured Unemployed (000) ***			
Regular Programs:	47.3	42.6	22
All Programs:	68.6	47.9	18
Reciency Rates (%) ***			
Regular Programs:	28	28	35
All Programs:	41	31	29
Covered Emp. (000)**:	987	998	36
Civ. Labor Force (000):	1,364	1,366	35
Subj. Employers (000):	64	68	34

Extended Benefits	(Quarterly)	Past 12 Months
Extended Benefits (000):	\$0	\$0
EB First Payments:	0	0
EB Weeks Claimed:	0	0
EB Exhaustions:	0	0

Loans	Rank
Outstanding Loan Bal (000):	\$0 2
Loan per Cov Employee:	\$0 2
Loan as % of Total Wages*:	0 2

* Based on extrapolated wages for the most recent 12 months.

** Wages and Covered Employment lag the rest of the Data Summary information by six months

*** Regular programs include State UI, UCFE and UCX.

+ Refers to most recent calendar year. Fourth and first quarter issues publish measure based on extrapolated wages. Second and third quarter issues publish measure based on actual wages.

See glossary for data definitions

Note: Blank cells appearing in any section of this report indicates that information is unavailable.

UI Data Summary for **Rhode Island**

CYQ: 2008.3

Benefits	(Quarterly)	Past 12 Months	Rank	High Value : Qtr		Low Value : Qtr	
Benefits Paid (000):	\$62,212	\$259,715	32	\$83,815	2008.1	\$6,858	1972.4
Initial Claims:	19,625	90,305	39	102,513	1978.2	14,082	1989.1
First Payments:	10,492	44,603	37	51,557	1978.2	6,427	1988.2
Weeks Claimed:	198,356	806,148	36	508,725	1975.1	104,435	1987.4
Wks Compensated:	179,470	724,826	36	444,513	1975.1	85,635	1987.4
Exhaustions:	5,023	18,937	35	12,648	1975.2	1,870	1987.4
Exhaustion Rate:		44.9%	10	51.5%	1994.1	18.6%	1979.1
Average Duration:		16.3	13	19.5	1976.1	9.2	1979.1
AWBA:	\$357.41	\$368.89	4	\$375.82	2008.1	\$54.10	1971.3
As % of AWW:	45.0		3				
Avg. Benefits per First Payment:		\$5,823					

Financial Information	Past 12 Months	Rank
State Revenues (000):	\$187,785	32
Total Wages (000)**:	\$4,970,367	46
Total Wages (Taxable Employers)(000)**:	\$3,741,189	46
Taxable Wages (000)**:	\$2,604,402	44
Avg. Weekly Wage**:	\$793.59	22
Avg. Tax Rate on Taxable Wages (%) **:	3.35	6
Avg. Tax Rate on Total Wages (%) **:	1.21	2
Calendar Yr Taxable Wage Base:	\$14,000	18
Trust Fund (TF) Balance (000):		
(Including Loans):	\$114,033	48
TF as % of Total Wages*:	0.79	30
Interest Earned (000):	\$1,490	50
Avg. High Cost Multiple +:	0.38	38
High Cost Multiple +:	0.25	39

Labor Force	(Quarterly)	Past 12 Mos	Rank
IUR (%):	3.2	3.3	5
TUR (%):	8.4	6.7	3
Total Unemp. (000):	48.5	38.6	37
Insured Unemployed (000) ***			
Regular Programs:	15.0	15.2	36
All Programs:	21.1	16.7	36
Reciency Rates (%) ***			
Regular Programs:	31	39	27
All Programs:	44	43	24
Covered Emp. (000)**:	454	468	45
Civ. Labor Force (000):	577	574	44
Subj. Employers (000):	34	34	44

Extended Benefits	(Quarterly)	Past 12 Months
Extended Benefits (000):	\$392	\$392
EB First Payments:	491	491
EB Weeks Claimed:	1,294	1,294
EB Exhaustions:	8	8

Loans	Rank
Outstanding Loan Bal (000):	\$0 2
Loan per Cov Employee:	\$0 2
Loan as % of Total Wages*:	0 2

* Based on extrapolated wages for the most recent 12 months.

** Wages and Covered Employment lag the rest of the Data Summary information by six months

*** Regular programs include State UI, UCFE and UCX.

+ Refers to most recent calendar year. Fourth and first quarter issues publish measure based on extrapolated wages. Second and third quarter issues publish measure based on actual wages.

See glossary for data definitions

Note: Blank cells appearing in any section of this report indicates that information is unavailable.

UI Data Summary for South Carolina

CYQ: 2008.3

Benefits	(Quarterly)	Past 12 Months	Rank	High Value : Qtr		Low Value : Qtr	
<u>Benefits Paid (000):</u>	\$120,087	\$433,258	26	\$123,120	2002.1	\$4,284	1973.3
<u>Initial Claims:</u>	99,045	347,836	16	259,218	1982.1	17,287	1973.2
<u>First Payments:</u>	37,028	136,774	19	132,837	1975.1	6,914	1972.4
<u>Weeks Claimed:</u>	663,482	2,341,405	19	1,140,593	1975.1	119,478	1973.2
<u>Wks Compensated:</u>	516,414	1,876,655	22	942,398	1975.1	93,407	1973.3
<u>Exhaustions:</u>	14,433	50,744	18	19,459	1975.2	2,196	1973.4
<u>Exhaustion Rate:</u>		42.1%	15	49.1%	1975.2	17.7%	1990.2
<u>Average Duration:</u>		13.7	36	14.7	1976.1	7.9	1975.1
<u>AWBA:</u>	\$239.06	\$238.39	42	\$240.78	2008.2	\$41.67	1971.1
As % of AWW:	35.2		32				
<u>Avg. Benefits per First Payment:</u>		\$3,168					

Financial Information	Past 12 Months	Rank
<u>State Revenues (000):</u>	\$284,134	28
<u>Total Wages (000)**:</u>	\$16,516,973	27
<u>Total Wages (Taxable Employers)(000)**:</u>	\$13,292,831	26
<u>Taxable Wages (000)**:</u>	\$7,733,621	33
<u>Avg. Weekly Wage**:</u>	\$678.50	42
<u>Avg. Tax Rate on Taxable Wages (%) **:</u>	2.12	19
<u>Avg. Tax Rate on Total Wages (%) **:</u>	0.51	32
<u>Calendar Yr Taxable Wage Base:</u>	\$7,000	49
<u>Trust Fund (TF) Balance (000):</u>		
(Including Loans):	\$102,549	49
<u>TF as % of Total Wages*:</u>	0.19	51
<u>Interest Earned (000):</u>	\$1,721	47
<u>Avg. High Cost Multiple +:</u>	0.26	46
<u>High Cost Multiple +:</u>	0.13	48

Labor Force	(Quarterly)	Past 12 Mos	Rank
<u>IUR (%):</u>	2.9	2.5	10
<u>TUR (%):</u>	7.4	6.4	6
<u>Total Unemp. (000):</u>	160.6	136.4	21
Insured Unemployed (000) ***			
<u>Regular Programs:</u>	54.1	47.2	18
<u>All Programs:</u>	77.1	53.0	15
Reciency Rates (%) ***			
<u>Regular Programs:</u>	34	35	23
<u>All Programs:</u>	48	39	16
<u>Covered Emp. (000)**:</u>	1,845	1,864	25
<u>Civ. Labor Force (000):</u>	2,178	2,148	24
<u>Subj. Employers (000):</u>	100	99	24

Extended Benefits	(Quarterly)	Past 12 Months
<u>Extended Benefits (000):</u>	\$0	\$0
EB First Payments:	0	0
EB Weeks Claimed:	0	0
EB Exhaustions:	0	0

Loans	Rank
<u>Outstanding Loan Bal (000):</u>	\$0 2
Loan per Cov Employee:	\$0 2
Loan as % of Total Wages*:	0 2

* Based on extrapolated wages for the most recent 12 months.

** Wages and Covered Employment lag the rest of the Data Summary information by six months

*** Regular programs include State UI, UCFE and UCX.

+ Refers to most recent calendar year. Fourth and first quarter issues publish measure based on extrapolated wages. Second and third quarter issues publish measure based on actual wages.

See glossary for data definitions

Note: Blank cells appearing in any section of this report indicates that information is unavailable.

UI Data Summary for South Dakota

CYQ: 2008.3

Benefits	(Quarterly)	Past 12 Months	Rank	High Value : Qtr		Low Value : Qtr	
<u>Benefits Paid (000):</u>	\$3,325	\$19,353	52	\$10,598	2003.1	\$448	1971.3
<u>Initial Claims:</u>	3,307	17,524	52	13,637	1978.4	2,200	1971.2
<u>First Payments:</u>	1,270	7,639	52	6,177	1979.1	1,008	2007.3
<u>Weeks Claimed:</u>	18,357	103,463	52	88,801	1979.1	16,839	1971.3
<u>Wks Compensated:</u>	14,714	83,861	52	66,277	1979.1	12,003	1971.3
<u>Exhaustions:</u>	189	827	53	1,370	1975.2	105	2000.3
<u>Exhaustion Rate:</u>		11.4%	53	33.5%	1975.2	7.3%	2000.4
<u>Average Duration:</u>		11.0	53	14.6	1983.3	9.8	2001.1
<u>AWBA:</u>	\$230.21	\$234.92	46	\$240.32	2008.1	\$39.50	1971.3
As % of AWW:	38.1		25				
<u>Avg. Benefits per First Payment:</u>		\$2,533					

Financial Information	Past 12 Months	Rank
<u>State Revenues (000):</u>	\$26,620	52
<u>Total Wages (000)**:</u>	\$3,041,825	49
<u>Total Wages (Taxable Employers)(000)**:</u>	\$2,320,897	49
<u>Taxable Wages (000)**:</u>	\$1,666,939	51
<u>Avg. Weekly Wage**:</u>	\$605.07	52
<u>Avg. Tax Rate on Taxable Wages (%) **:</u>	0.87	50
<u>Avg. Tax Rate on Total Wages (%) **:</u>	0.27	50
<u>Calendar Yr Taxable Wage Base:</u>	\$9,000	31
<u>Trust Fund (TF) Balance (000):</u>		
(Including Loans):	\$28,245	52
<u>TF as % of Total Wages*:</u>	0.29	46
<u>Interest Earned (000):</u>	\$332	51
<u>Avg. High Cost Multiple +:</u>	0.33	40
<u>High Cost Multiple +:</u>	0.25	39

Labor Force	(Quarterly)	Past 12 Mos	Rank
<u>IUR (%):</u>	0.4	0.6	53
<u>TUR (%):</u>	2.9	2.9	52
<u>Total Unemp. (000):</u>	13.2	12.7	50
Insured Unemployed (000) ***			
<u>Regular Programs:</u>	1.7	2.2	52
<u>All Programs:</u>	1.9	2.3	52
Reciency Rates (%) ***			
<u>Regular Programs:</u>	13	17	52
<u>All Programs:</u>	14	18	52
<u>Covered Emp. (000)**:</u>	376	383	48
<u>Civ. Labor Force (000):</u>	451	444	46
<u>Subj. Employers (000):</u>	24	25	48

Extended Benefits	(Quarterly)	Past 12 Months
<u>Extended Benefits (000):</u>	\$0	\$0
EB First Payments:	0	0
EB Weeks Claimed:	0	0
EB Exhaustions:	0	0

Loans	Rank
<u>Outstanding Loan Bal (000):</u>	\$0 2
Loan per Cov Employee:	\$0 2
Loan as % of Total Wages*:	0 2

* Based on extrapolated wages for the most recent 12 months.

** Wages and Covered Employment lag the rest of the Data Summary information by six months

*** Regular programs include State UI, UCFE and UCX.

+ Refers to most recent calendar year. Fourth and first quarter issues publish measure based on extrapolated wages. Second and third quarter issues publish measure based on actual wages.

See glossary for data definitions

Note: Blank cells appearing in any section of this report indicates that information is unavailable.

UI Data Summary for Tennessee

CYQ: 2008.3

Benefits	(Quarterly)	Past 12 Months	Rank	High Value : Qtr		Low Value : Qtr	
<u>Benefits Paid (000):</u>	\$139,173	\$488,828	20	\$193,223	2002.1	\$7,536	1972.4
<u>Initial Claims:</u>	91,774	341,368	20	279,757	1982.1	27,840	1973.2
<u>First Payments:</u>	46,376	165,726	15	121,148	1975.1	14,013	1972.4
<u>Weeks Claimed:</u>	657,590	2,368,039	20	1,526,707	1975.1	231,044	1972.4
<u>Wks Compensated:</u>	640,214	2,262,312	15	1,189,643	1975.1	170,977	1972.4
<u>Exhaustions:</u>	16,400	58,207	15	29,480	1975.2	4,037	1973.4
<u>Exhaustion Rate:</u>		39.6%	19	40.2%	2003.4	19.6%	1984.3
<u>Average Duration:</u>		13.7	37	16.6	1976.1	8.8	1990.4
<u>AWBA:</u>	\$220.03	\$220.50	47	\$224.57	2007.4	\$41.43	1971.1
As % of AWW:	29.4		44				
<u>Avg. Benefits per First Payment:</u>		\$2,950					

Financial Information	Past 12 Months	Rank
<u>State Revenues (000):</u>	\$412,978	21
<u>Total Wages (000)**:</u>	\$26,270,979	19
<u>Total Wages (Taxable Employers)(000)**:</u>	\$21,882,804	21
<u>Taxable Wages (000)**:</u>	\$11,861,508	27
<u>Avg. Weekly Wage**:</u>	\$749.23	27
<u>Avg. Tax Rate on Taxable Wages (%) **:</u>	2.04	20
<u>Avg. Tax Rate on Total Wages (%) **:</u>	0.44	38
<u>Calendar Yr Taxable Wage Base:</u>	\$7,000	49
<u>Trust Fund (TF) Balance (000):</u>		
(Including Loans):	\$558,644	25
<u>TF as % of Total Wages*:</u>	0.62	37
<u>Interest Earned (000):</u>	\$7,140	24
<u>Avg. High Cost Multiple +:</u>	0.48	33
<u>High Cost Multiple +:</u>	0.3	35

Labor Force	(Quarterly)	Past 12 Mos	Rank
<u>IUR (%):</u>	2.0	1.7	33
<u>TUR (%):</u>	6.8	5.8	11
<u>Total Unemp. (000):</u>	209.4	178.3	12
Insured Unemployed (000) ***			
<u>Regular Programs:</u>	52.7	47.1	20
<u>All Programs:</u>	74.6	52.5	16
Reciency Rates (%) ***			
<u>Regular Programs:</u>	25	26	44
<u>All Programs:</u>	36	29	37
<u>Covered Emp. (000)**:</u>	2,683	2,703	17
<u>Civ. Labor Force (000):</u>	3,061	3,053	18
<u>Subj. Employers (000):</u>	116	116	22

Extended Benefits	(Quarterly)	Past 12 Months
<u>Extended Benefits (000):</u>	\$0	\$0
EB First Payments:	0	0
EB Weeks Claimed:	0	0
EB Exhaustions:	0	0

Loans	Rank
<u>Outstanding Loan Bal (000):</u>	\$0 2
Loan per Cov Employee:	\$0 2
Loan as % of Total Wages*:	0 2

* Based on extrapolated wages for the most recent 12 months.

** Wages and Covered Employment lag the rest of the Data Summary information by six months

*** Regular programs include State UI, UCFE and UCX.

+ Refers to most recent calendar year. Fourth and first quarter issues publish measure based on extrapolated wages. Second and third quarter issues publish measure based on actual wages.

See glossary for data definitions

Note: Blank cells appearing in any section of this report indicates that information is unavailable.

UI Data Summary for Texas

CYQ: 2008.3

Benefits	(Quarterly)	Past 12 Months	Rank	High Value : Qtr		Low Value : Qtr	
<u>Benefits Paid (000):</u>	\$408,217	\$1,384,197	8	\$592,800	2002.1	\$15,273	1973.4
<u>Initial Claims:</u>	250,679	763,490	6	292,684	2001.4	59,692	1973.3
<u>First Payments:</u>	95,113	336,186	6	148,987	2001.4	24,909	1973.2
<u>Weeks Claimed:</u>	1,610,427	5,508,579	8	2,704,288	2002.1	377,514	1973.3
<u>Wks Compensated:</u>	1,396,847	4,761,637	8	2,360,139	2002.1	306,120	1973.4
<u>Exhaustions:</u>	35,587	121,713	8	112,555	2002.1	9,367	1973.4
<u>Exhaustion Rate:</u>		41.1%	17	67.2%	2002.1	29.7%	1982.2
<u>Average Duration:</u>		14.2	30	17.0	2004.2	10.7	1975.1
<u>AWBA:</u>	\$301.31	\$300.21	19	\$304.72	2008.2	\$40.91	1971.3
As % of AWW:	35.0		34				
<u>Avg. Benefits per First Payment:</u>		\$4,117					

Financial Information	Past 12 Months	Rank
<u>State Revenues (000):</u>	\$1,035,946	10
<u>Total Wages (000)**:</u>	\$118,833,788	3
<u>Total Wages (Taxable Employers)(000)**:</u>	\$101,847,813	3
<u>Taxable Wages (000)**:</u>	\$53,220,594	2
<u>Avg. Weekly Wage**:</u>	\$861.43	13
<u>Avg. Tax Rate on Taxable Wages (%) **:</u>	1.45	34
<u>Avg. Tax Rate on Total Wages (%) **:</u>	0.34	45
<u>Calendar Yr Taxable Wage Base:</u>	\$9,000	31
<u>Trust Fund (TF) Balance (000):</u>		
(Including Loans):	\$1,671,383	6
<u>TF as % of Total Wages*:</u>	0.42	43
<u>Interest Earned (000):</u>	\$21,293	6
<u>Avg. High Cost Multiple +:</u>	0.45	36
<u>High Cost Multiple +:</u>	0.41	30

Labor Force	(Quarterly)	Past 12 Mos	Rank
<u>IUR (%):</u>	1.2	1.1	44
<u>TUR (%):</u>	5.1	4.5	29
<u>Total Unemp. (000):</u>	604.7	524.2	3
Insured Unemployed (000) ***			
<u>Regular Programs:</u>	125.4	108.4	8
<u>All Programs:</u>	167.3	118.9	8
Reciency Rates (%) ***			
<u>Regular Programs:</u>	21	21	50
<u>All Programs:</u>	28	23	48
<u>Covered Emp. (000)**:</u>	10,171	10,125	2
<u>Civ. Labor Force (000):</u>	11,798	11,652	2
<u>Subj. Employers (000):</u>	448	445	4

Extended Benefits	(Quarterly)	Past 12 Months
<u>Extended Benefits (000):</u>	\$0	\$0
EB First Payments:	0	0
EB Weeks Claimed:	0	0
EB Exhaustions:	0	0

Loans	Rank
<u>Outstanding Loan Bal (000):</u>	\$0 2
Loan per Cov Employee:	\$0 2
Loan as % of Total Wages*:	0 2

* Based on extrapolated wages for the most recent 12 months.

** Wages and Covered Employment lag the rest of the Data Summary information by six months

*** Regular programs include State UI, UCFE and UCX.

+ Refers to most recent calendar year. Fourth and first quarter issues publish measure based on extrapolated wages. Second and third quarter issues publish measure based on actual wages.

See glossary for data definitions

Note: Blank cells appearing in any section of this report indicates that information is unavailable.

UI Data Summary for Utah

CYQ: 2008.3

Benefits	(Quarterly)	Past 12 Months	Rank	High Value : Qtr		Low Value : Qtr	
<u>Benefits Paid (000):</u>	\$41,059	\$157,386	39	\$79,889	2002.1	\$3,256	1973.3
<u>Initial Claims:</u>	20,683	81,169	38	38,001	1982.4	10,343	1973.2
<u>First Payments:</u>	8,433	37,032	41	20,398	2001.4	4,234	2006.3
<u>Weeks Claimed:</u>	161,370	616,426	40	398,806	1983.1	78,788	1973.3
<u>Wks Compensated:</u>	135,132	519,964	42	307,666	1983.1	60,361	1973.3
<u>Exhaustions:</u>	3,418	11,354	39	8,568	1983.1	1,303	1973.3
<u>Exhaustion Rate:</u>		37.5%	24	46.6%	1983.2	20.5%	1978.3
<u>Average Duration:</u>		14.0	32	16.6	1983.3	10.7	1996.3
<u>AWBA:</u>	\$309.66	\$309.03	13	\$311.83	2008.1	\$44.14	1971.2
As % of AWW:	43.8		4				
<u>Avg. Benefits per First Payment:</u>		\$4,250					

Financial Information	Past 12 Months	Rank
<u>State Revenues (000):</u>	\$148,286	36
<u>Total Wages (000)**:</u>	\$10,877,056	33
<u>Total Wages (Taxable Employers)(000)**:</u>	\$8,914,277	33
<u>Taxable Wages (000)**:</u>	\$7,933,179	22
<u>Avg. Weekly Wage**:</u>	\$706.55	37
<u>Avg. Tax Rate on Taxable Wages (%) **:</u>	0.78	52
<u>Avg. Tax Rate on Total Wages (%) **:</u>	0.45	37
<u>Calendar Yr Taxable Wage Base:</u>	\$26,700	6
<u>Trust Fund (TF) Balance (000):</u>		
(Including Loans):	\$851,275	14
<u>TF as % of Total Wages*:</u>	2.29	12
<u>Interest Earned (000):</u>	\$10,137	15
<u>Avg. High Cost Multiple +:</u>	1.47	7
<u>High Cost Multiple +:</u>	1.17	5

Labor Force	(Quarterly)	Past 12 Mos	Rank
<u>IUR (%):</u>	1.1	1.0	49
<u>TUR (%):</u>	3.6	3.2	48
<u>Total Unemp. (000):</u>	49.7	44.3	36
Insured Unemployed (000) ***			
<u>Regular Programs:</u>	12.7	12.3	39
<u>All Programs:</u>	15.4	12.9	40
Reciency Rates (%) ***			
<u>Regular Programs:</u>	26	28	42
<u>All Programs:</u>	31	29	45
<u>Covered Emp. (000)**:</u>	1,180	1,189	33
<u>Civ. Labor Force (000):</u>	1,393	1,386	33
<u>Subj. Employers (000):</u>	71	71	30

Extended Benefits	(Quarterly)	Past 12 Months
<u>Extended Benefits (000):</u>	\$0	\$0
EB First Payments:	0	0
EB Weeks Claimed:	0	0
EB Exhaustions:	0	0

Loans	Rank
<u>Outstanding Loan Bal (000):</u>	\$0 2
Loan per Cov Employee:	\$0 2
Loan as % of Total Wages*:	0 2

* Based on extrapolated wages for the most recent 12 months.

** Wages and Covered Employment lag the rest of the Data Summary information by six months

*** Regular programs include State UI, UCFE and UCX.

+ Refers to most recent calendar year. Fourth and first quarter issues publish measure based on extrapolated wages. Second and third quarter issues publish measure based on actual wages.

See glossary for data definitions

Note: Blank cells appearing in any section of this report indicates that information is unavailable.

UI Data Summary for **Vermont**

CYQ: 2008.3

Benefits	(Quarterly)	Past 12 Months	Rank	High Value : Qtr		Low Value : Qtr	
Benefits Paid (000):	\$19,259	\$102,384	47	\$37,231	2008.1	\$2,018	1973.3
Initial Claims:	8,519	49,140	49	21,356	1982.4	4,424	1988.3
First Payments:	3,956	24,581	49	11,432	1991.1	2,057	1988.3
Weeks Claimed:	79,737	394,103	49	172,983	1991.1	34,974	1988.3
Wks Compensated:	71,074	363,741	49	154,357	1991.1	29,653	1988.3
Exhaustions:	1,158	4,633	49	2,755	1975.3	400	1989.1
Exhaustion Rate:		20.0%	52	37.4%	1976.1	11.8%	2000.4
Average Duration:		14.8	22	19.1	1976.1	11.4	1989.4
AWBA:	\$282.63	\$291.61	29	\$299.97	2008.1	\$53.47	1971.1
As % of AWW:	39.8		17				
Avg. Benefits per First Payment:		\$4,165					

Financial Information	Past 12 Months	Rank
State Revenues (000):	\$63,146	48
Total Wages (000)**:	\$2,796,992	51
Total Wages (Taxable Employers)(000)**:	\$2,001,989	52
Taxable Wages (000)**:	\$1,227,405	52
Avg. Weekly Wage**:	\$709.90	36
Avg. Tax Rate on Taxable Wages (%) **:	2.83	9
Avg. Tax Rate on Total Wages (%) **:	0.73	19
Calendar Yr Taxable Wage Base:	\$8,000	41
Trust Fund (TF) Balance (000):		
(Including Loans):	\$153,975	43
TF as % of Total Wages*:	1.91	13
Interest Earned (000):	\$1,881	46
Avg. High Cost Multiple +:	1.20	10
High Cost Multiple +:	0.71	18

Labor Force	(Quarterly)	Past 12 Mos	Rank
IUR (%):	2.0	2.5	30
TUR (%):	4.6	4.5	37
Total Unemp. (000):	16.2	15.8	49
Insured Unemployed (000) ***			
Regular Programs:	6.0	7.4	48
All Programs:	7.5	7.7	49
Reciency Rates (%) ***			
Regular Programs:	37	47	14
All Programs:	46	49	20
Covered Emp. (000)**:	296	298	50
Civ. Labor Force (000):	356	353	50
Subj. Employers (000):	22	22	49

Extended Benefits	(Quarterly)	Past 12 Months
Extended Benefits (000):	\$0	\$0
EB First Payments:	0	0
EB Weeks Claimed:	0	0
EB Exhaustions:	0	0

Loans	Rank
Outstanding Loan Bal (000):	\$0 2
Loan per Cov Employee:	\$0 2
Loan as % of Total Wages*:	0 2

* Based on extrapolated wages for the most recent 12 months.

** Wages and Covered Employment lag the rest of the Data Summary information by six months

*** Regular programs include State UI, UCFE and UCX.

+ Refers to most recent calendar year. Fourth and first quarter issues publish measure based on extrapolated wages. Second and third quarter issues publish measure based on actual wages.

See glossary for data definitions

Note: Blank cells appearing in any section of this report indicates that information is unavailable.

UI Data Summary for Virgin Islands

CYQ: 2008.3

Benefits	(Quarterly)	Past 12 Months	Rank	High Value : Qtr		Low Value : Qtr	
				Value	Year	Value	Year
Benefits Paid (000):	\$3,059	\$11,913	53	\$21,838	2002.4	\$277	1988.1
Initial Claims:	1,323	3,871	53	3,877	1995.4	332	2000.1
First Payments:	627	2,152	53	3,838	1995.4	107	1978.1
Weeks Claimed:	11,294	41,844	53	25,858	1994.1	215	1974.3
Wks Compensated:	9,871	37,147	53	37,242	1995.4	2,660	1988.1
Exhaustions:	316	1,081	52	1,170	1994.2	51	1978.1
Exhaustion Rate:		53.9%	2	70.6%	2003.3	20.5%	1991.1
Average Duration:		17.3	7	41.3	1978.1	10.9	1991.1
AWBA:	\$320.25	\$331.80	9	\$338.13	2007.4	\$62.61	1978.4
As % of AWW:	46.0		2				
Avg. Benefits per First Payment:		\$5,536					

Financial Information	Past 12 Months	Rank
State Revenues (000):	\$1,505	53
Total Wages (000)**:	\$408,384	53
Total Wages (Taxable Employers)(000)**:	\$291,330	53
Taxable Wages (000)**:	\$253,876	53
Avg. Weekly Wage**:	\$696.02	39
Avg. Tax Rate on Taxable Wages (%) **:	0.18	53
Avg. Tax Rate on Total Wages (%) **:	0.10	53
Calendar Yr Taxable Wage Base:	\$21,800	12
Trust Fund (TF) Balance (000):		
(Including Loans):	\$15,162	53
TF as % of Total Wages*:	1.30	21
Interest Earned (000):	\$195	52
Avg. High Cost Multiple +:	0.80	25
High Cost Multiple +:	0.7	19

Labor Force	(Quarterly)	Past 12 Mos	Rank
IUR (%):	1.6	1.5	36
TUR (%):			
Total Unemp. (000):			
Insured Unemployed (000) ***			
Regular Programs:	0.7	0.7	53
All Programs:	1.0	0.7	53
Reciency Rates (%) ***			
Regular Programs:			
All Programs:			
Covered Emp. (000)**:	45	45	53
Civ. Labor Force (000):			
Subj. Employers (000):	3	4	53

Extended Benefits	(Quarterly)	Past 12 Months
Extended Benefits (000):	\$0	\$0
EB First Payments:	0	0
EB Weeks Claimed:	0	0
EB Exhaustions:	0	0

Loans	Rank
Outstanding Loan Bal (000):	\$0 2
Loan per Cov Employee:	\$0 2
Loan as % of Total Wages*:	0 2

* Based on extrapolated wages for the most recent 12 months.

** Wages and Covered Employment lag the rest of the Data Summary information by six months

*** Regular programs include State UI, UCFE and UCX.

+ Refers to most recent calendar year. Fourth and first quarter issues publish measure based on extrapolated wages. Second and third quarter issues publish measure based on actual wages.

See glossary for data definitions

Note: Blank cells appearing in any section of this report indicates that information is unavailable.

UI Data Summary for **Virginia**

CYQ: 2008.3

Benefits	(Quarterly)	Past 12 Months	Rank	High Value : Qtr		Low Value : Qtr	
Benefits Paid (000):	\$122,573	\$440,743	24	\$207,301	2002.1	\$2,738	1972.4
Initial Claims:	76,466	302,136	22	185,586	1991.1	16,939	1973.2
First Payments:	31,439	126,466	23	96,342	1975.1	5,286	1973.3
Weeks Claimed:	524,398	1,986,069	25	847,708	1975.1	83,251	1972.4
Wks Compensated:	442,284	1,619,954	27	759,236	1975.2	52,602	1972.4
Exhaustions:	12,671	42,460	20	18,990	2002.2	1,301	1972.4
Exhaustion Rate:		37.2%	25	42.9%	1975.2	14.3%	1990.3
Average Duration:		12.8	46	15.4	1976.1	7.5	1990.1
AWBA:	\$283.51	\$279.10	28	\$313.81	2002.2	\$45.63	1971.3
As % of AWW:	32.9		37				
Avg. Benefits per First Payment:		\$3,485					

Financial Information	Past 12 Months	Rank
State Revenues (000):	\$342,558	26
Total Wages (000)**:	\$40,521,120	12
Total Wages (Taxable Employers)(000)**:	\$34,111,740	12
Taxable Wages (000)**:	\$17,143,235	16
Avg. Weekly Wage**:	\$863.13	12
Avg. Tax Rate on Taxable Wages (%) **:	1.22	44
Avg. Tax Rate on Total Wages (%) **:	0.25	52
Calendar Yr Taxable Wage Base:	\$8,000	41
Trust Fund (TF) Balance (000):		
(Including Loans):	\$731,008	18
TF as % of Total Wages*:	0.54	39
Interest Earned (000):	\$9,093	16
Avg. High Cost Multiple +:	0.71	28
High Cost Multiple +:	0.45	26

Labor Force	(Quarterly)	Past 12 Mos	Rank
IUR (%):	1.2	1.1	46
TUR (%):	4.4	3.8	39
Total Unemp. (000):	184.7	155.3	16
Insured Unemployed (000) ***			
Regular Programs:	41.2	38.9	25
All Programs:	53.8	42.1	24
Reciency Rates (%) ***			
Regular Programs:	22	25	48
All Programs:	29	27	46
Covered Emp. (000)**:	3,481	3,520	12
Civ. Labor Force (000):	4,171	4,112	12
Subj. Employers (000):	180	187	14

Extended Benefits	(Quarterly)	Past 12 Months
Extended Benefits (000):	\$0	\$0
EB First Payments:	0	0
EB Weeks Claimed:	8	8
EB Exhaustions:	0	0

Loans	Rank
Outstanding Loan Bal (000):	\$0 2
Loan per Cov Employee:	\$0 2
Loan as % of Total Wages*:	0 2

* Based on extrapolated wages for the most recent 12 months.

** Wages and Covered Employment lag the rest of the Data Summary information by six months

*** Regular programs include State UI, UCFE and UCX.

+ Refers to most recent calendar year. Fourth and first quarter issues publish measure based on extrapolated wages. Second and third quarter issues publish measure based on actual wages.

See glossary for data definitions

Note: Blank cells appearing in any section of this report indicates that information is unavailable.

UI Data Summary for Washington

CYQ: 2008.3

Benefits	(Quarterly)	Past 12 Months	Rank	High Value : Qtr		Low Value : Qtr	
Benefits Paid (000):	\$215,455	\$875,914	14	\$502,782	2002.1	\$28,236	1972.3
Initial Claims:	111,049	476,886	14	206,872	2001.4	76,810	1979.2
First Payments:	42,267	195,813	16	89,272	2001.4	26,788	1979.2
Weeks Claimed:	740,509	3,054,003	15	1,756,873	2002.1	459,778	1979.3
Wks Compensated:	633,196	2,637,602	16	1,646,496	2002.1	353,807	1979.3
Exhaustions:	12,303	40,542	23	30,315	1971.1	5,488	1979.3
Exhaustion Rate:		22.8%	50	41.5%	1976.1	19.2%	1980.1
Average Duration:		13.5	41	19.5	2002.4	12.4	1979.4
AWBA:	\$357.03	\$348.87	5	\$357.03	2008.3	\$57.77	1972.3
As % of AWW:	41.2		10				
Avg. Benefits per First Payment:		\$4,473					

Financial Information	Past 12 Months	Rank
State Revenues (000):	\$1,125,909	8
Total Wages (000)**:	\$32,978,505	14
Total Wages (Taxable Employers)(000)**:	\$26,166,337	14
Taxable Wages (000)**:	\$23,253,731	6
Avg. Weekly Wage**:	\$866.27	11
Avg. Tax Rate on Taxable Wages (%) **:	1.84	26
Avg. Tax Rate on Total Wages (%) **:	1.06	5
Calendar Yr Taxable Wage Base:	\$34,000	1
Trust Fund (TF) Balance (000):		
(Including Loans):	\$4,117,673	1
TF as % of Total Wages*:	3.88	2
Interest Earned (000):	\$48,666	1
Avg. High Cost Multiple +:	1.53	5
High Cost Multiple +:	0.98	8

Labor Force	(Quarterly)	Past 12 Mos	Rank
IUR (%):	2.0	2.1	31
TUR (%):	5.5	5.0	26
Total Unemp. (000):	191.2	174.3	15
Insured Unemployed (000) ***			
Regular Programs:	57.8	59.8	15
All Programs:	71.3	63.2	17
Reciency Rates (%) ***			
Regular Programs:	30	34	29
All Programs:	37	36	33
Covered Emp. (000)**:	2,841	2,874	14
Civ. Labor Force (000):	3,488	3,461	13
Subj. Employers (000):	202	200	12

Extended Benefits	(Quarterly)	Past 12 Months
Extended Benefits (000):	\$0	\$2
EB First Payments:	0	2
EB Weeks Claimed:	0	0
EB Exhaustions:	0	0

Loans	Rank	
Outstanding Loan Bal (000):	\$0	2
Loan per Cov Employee:	\$0	2
Loan as % of Total Wages*:	0	2

* Based on extrapolated wages for the most recent 12 months.

** Wages and Covered Employment lag the rest of the Data Summary information by six months

*** Regular programs include State UI, UCFE and UCX.

+ Refers to most recent calendar year. Fourth and first quarter issues publish measure based on extrapolated wages. Second and third quarter issues publish measure based on actual wages.

See glossary for data definitions

Note: Blank cells appearing in any section of this report indicates that information is unavailable.

UI Data Summary for **West Virginia**

CYQ: 2008.3

Benefits	(Quarterly)	Past 12 Months	Rank	High Value : Qtr		Low Value : Qtr	
Benefits Paid (000):	\$30,905	\$142,558	43	\$98,566	1983.1	\$3,940	1971.3
Initial Claims:	14,765	69,346	44	70,987	1977.1	13,253	2006.2
First Payments:	8,466	44,266	40	53,519	1977.1	7,534	2004.3
Weeks Claimed:	153,274	695,875	41	798,811	1983.1	136,981	1973.3
Wks Compensated:	135,317	610,292	41	723,321	1983.1	106,340	1973.3
Exhaustions:	3,085	10,280	41	14,289	1983.2	1,743	1971.2
Exhaustion Rate:		23.8%	48	42.1%	1983.3	12.3%	1979.1
Average Duration:		13.8	34	21.7	1983.4	9.3	1977.4
AWBA:	\$235.65	\$242.13	45	\$246.24	2008.1	\$36.07	1971.1
As % of AWW:	36.5		26				
Avg. Benefits per First Payment:		\$3,220					

Financial Information	Past 12 Months	Rank
State Revenues (000):	\$140,521	37
Total Wages (000)**:	\$5,815,474	41
Total Wages (Taxable Employers)(000)**:	\$4,446,698	40
Taxable Wages (000)**:	\$2,825,718	45
Avg. Weekly Wage**:	\$645.21	47
Avg. Tax Rate on Taxable Wages (%) **:	2.75	11
Avg. Tax Rate on Total Wages (%) **:	0.77	16
Calendar Yr Taxable Wage Base:	\$8,000	41
Trust Fund (TF) Balance (000):		
(Including Loans):	\$249,994	39
TF as % of Total Wages*:	1.38	19
Interest Earned (000):	\$2,998	39
Avg. High Cost Multiple +:	0.45	36
High Cost Multiple +:	0.35	32

Labor Force	(Quarterly)	Past 12 Mos	Rank
IUR (%):	1.8	2.1	34
TUR (%):	3.9	4.7	44
Total Unemp. (000):	31.7	38.1	41
Insured Unemployed (000) ***			
Regular Programs:	12.6	14.2	41
All Programs:	16.2	15.1	38
Reciency Rates (%) ***			
Regular Programs:	40	37	12
All Programs:	51	40	11
Covered Emp. (000)**:	675	685	39
Civ. Labor Force (000):	812	811	39
Subj. Employers (000):	36	36	43

Extended Benefits	(Quarterly)	Past 12 Months
Extended Benefits (000):	\$0	\$0
EB First Payments:	0	0
EB Weeks Claimed:	0	0
EB Exhaustions:	0	0

Loans	Rank
Outstanding Loan Bal (000):	\$0 2
Loan per Cov Employee:	\$0 2
Loan as % of Total Wages*:	0 2

* Based on extrapolated wages for the most recent 12 months.

** Wages and Covered Employment lag the rest of the Data Summary information by six months

*** Regular programs include State UI, UCFE and UCX.

+ Refers to most recent calendar year. Fourth and first quarter issues publish measure based on extrapolated wages. Second and third quarter issues publish measure based on actual wages.

See glossary for data definitions

Note: Blank cells appearing in any section of this report indicates that information is unavailable.

UI Data Summary for Wisconsin

CYQ: 2008.3

Benefits	(Quarterly)	Past 12 Months	Rank	High Value : Qtr		Low Value : Qtr	
Benefits Paid (000):	\$203,740	\$960,221	15	\$355,320	2002.1	\$13,881	1973.3
Initial Claims:	128,720	667,774	13	244,850	2001.4	40,405	1973.2
First Payments:	57,492	285,786	12	120,308	2002.1	15,946	1973.2
Weeks Claimed:	936,361	4,165,874	13	1,801,296	1983.1	291,967	1973.3
Wks Compensated:	847,647	3,872,571	13	1,600,491	1983.1	221,033	1973.3
Exhaustions:	17,754	72,434	14	35,071	1982.2	3,847	1973.3
Exhaustion Rate:		26.6%	46	39.7%	1982.4	14.8%	2000.4
Average Duration:		13.6	40	17.8	1976.1	10.9	2001.1
AWBA:	\$262.97	\$271.77	37	\$278.89	2008.1	\$56.98	1971.3
As % of AWW:	35.9		29				
Avg. Benefits per First Payment:		\$3,360					

Financial Information	Past 12 Months	Rank
State Revenues (000):	\$668,123	15
Total Wages (000)**:	\$26,566,686	20
Total Wages (Taxable Employers)(000)**:	\$20,744,669	23
Taxable Wages (000)**:	\$13,991,622	19
Avg. Weekly Wage**:	\$732.46	32
Avg. Tax Rate on Taxable Wages (%) **:	2.63	13
Avg. Tax Rate on Total Wages (%) **:	0.77	14
Calendar Yr Taxable Wage Base:	\$10,500	25
Trust Fund (TF) Balance (000):		
(Including Loans):	\$413,611	32
TF as % of Total Wages*:	0.49	40
Interest Earned (000):	\$5,404	31
Avg. High Cost Multiple +:	0.29	44
High Cost Multiple +:	0.23	42

Labor Force	(Quarterly)	Past 12 Mos	Rank
IUR (%):	2.7	2.9	15
TUR (%):	4.6	4.8	36
Total Unemp. (000):	143.3	147.7	22
Insured Unemployed (000) ***			
Regular Programs:	72.9	80.6	13
All Programs:	95.6	86.3	13
Reciency Rates (%) ***			
Regular Programs:	51	55	3
All Programs:	67	58	4
Covered Emp. (000)**:	2,698	2,754	16
Civ. Labor Force (000):	3,101	3,088	17
Subj. Employers (000):	128	131	19

Extended Benefits	(Quarterly)	Past 12 Months
Extended Benefits (000):	\$0	\$0
EB First Payments:	0	0
EB Weeks Claimed:	0	0
EB Exhaustions:	0	0

Loans	Rank
Outstanding Loan Bal (000):	\$0 2
Loan per Cov Employee:	\$0 2
Loan as % of Total Wages*:	0 2

* Based on extrapolated wages for the most recent 12 months.

** Wages and Covered Employment lag the rest of the Data Summary information by six months

*** Regular programs include State UI, UCFE and UCX.

+ Refers to most recent calendar year. Fourth and first quarter issues publish measure based on extrapolated wages. Second and third quarter issues publish measure based on actual wages.

See glossary for data definitions

Note: Blank cells appearing in any section of this report indicates that information is unavailable.

UI Data Summary for Wyoming

CYQ: 2008.3

Benefits	(Quarterly)	Past 12 Months	Rank	High Value : Qtr		Low Value : Qtr	
				Value	Year	Value	Year
Benefits Paid (000):	\$8,524	\$41,746	50	\$25,268	1983.1	\$282	1974.3
Initial Claims:	4,144	22,753	51	15,650	1983.1	1,089	1973.3
First Payments:	1,791	10,715	51	10,956	1983.1	440	1974.3
Weeks Claimed:	29,202	151,377	51	172,109	1983.1	7,676	1974.3
Wks Compensated:	27,877	140,073	50	180,987	1983.1	5,338	1974.3
Exhaustions:	737	3,119	50	5,042	1983.2	137	1974.4
Exhaustion Rate:		31.1%	42	50.1%	1983.2	17.1%	1979.4
Average Duration:		13.1	44	19.7	1987.3	9.6	1976.3
AWBA:	\$310.46	\$302.29	11	\$310.46	2008.3	\$47.47	1971.3
As % of AWW:	40.9		11				
Avg. Benefits per First Payment:		\$3,896					

Financial Information	Past 12 Months	Rank
State Revenues (000):	\$55,677	49
Total Wages (000)**:	\$2,701,594	52
Total Wages (Taxable Employers)(000)**:	\$2,128,339	50
Taxable Wages (000)**:	\$1,835,302	49
Avg. Weekly Wage**:	\$758.99	26
Avg. Tax Rate on Taxable Wages (%) **:	1.37	41
Avg. Tax Rate on Total Wages (%) **:	0.65	25
Calendar Yr Taxable Wage Base:	\$20,100	13
Trust Fund (TF) Balance (000):		
(Including Loans):	\$258,691	38
TF as % of Total Wages*:	2.87	6
Interest Earned (000):	\$3,038	38
Avg. High Cost Multiple +:	1.15	13
High Cost Multiple +:	0.97	9

Labor Force	(Quarterly)	Past 12 Mos	Rank
IUR (%):	0.8	1.0	52
TUR (%):	3.0	3.1	51
Total Unemp. (000):	8.8	9.0	52
Insured Unemployed (000) ***			
Regular Programs:	2.1	2.7	51
All Programs:	2.5	2.8	51
Reciency Rates (%) ***			
Regular Programs:	23	30	46
All Programs:	28	31	47
Covered Emp. (000)**:	269	273	52
Civ. Labor Force (000):	295	291	52
Subj. Employers (000):	22	22	50

Extended Benefits	(Quarterly)	Past 12 Months
Extended Benefits (000):	\$0	\$0
EB First Payments:	0	0
EB Weeks Claimed:	0	0
EB Exhaustions:	0	0

Loans	Rank
Outstanding Loan Bal (000):	\$0 2
Loan per Cov Employee:	\$0 2
Loan as % of Total Wages*:	0 2

* Based on extrapolated wages for the most recent 12 months.

** Wages and Covered Employment lag the rest of the Data Summary information by six months

*** Regular programs include State UI, UCFE and UCX.

+ Refers to most recent calendar year. Fourth and first quarter issues publish measure based on extrapolated wages. Second and third quarter issues publish measure based on actual wages.

See glossary for data definitions

Note: Blank cells appearing in any section of this report indicates that information is unavailable.

UI Data Summary for **United States**

CYQ: 2008.3

Benefits	(Quarterly)	Past 12 Months	High Value : Qtr		Low Value : Qtr	
			Value	Year	Value	Year
Benefits Paid (000):	\$9,977,909	\$38,412,356	\$12,080,573	2002.1	\$860,035	1973.3
Initial Claims:	5,043,357	19,433,248	8,229,191	1975.1	2,671,661	1973.2
First Payments:	2,225,363	8,761,836	4,663,186	1975.1	1,074,462	1973.2
Weeks Claimed:	40,642,861	154,731,548	62,573,667	1975.1	18,445,892	1973.3
Wks Compensated:	35,161,218	134,279,344	54,739,150	1983.1	15,351,045	1973.3
Exhaustions:	883,022	3,082,728	1,285,185	1983.1	332,910	1973.4
Exhaustion Rate:		39.0%	43.7%	2003.3	25.8%	1979.2
Average Duration:		15.3	17.5	1983.3	12.4	1975.1
AWBA:	\$292.02	\$295.05	\$299.14	2008.1	\$52.64	1971.3
As % of AWW:	34.4					
Avg. Benefits Per First Payment:		\$4,384				

Financial Information	Past 12 Months
State Revenues (000):	\$32,244,285
Total Wages (000)**:	\$5,913,510,397
Total Wages (Taxable Employers) (000)**:	\$4,802,355,517
Taxable Wages (000)**:	\$1,314,138,574
Avg. Weekly Wage**:	\$849.29
Avg. Tax Rate on Taxable Wages (%) **:	2.32
Avg. Tax Rate on Total Wages (%) **:	0.63
Avg. State CY Taxable Wage Base:	\$11,570
Trust Fund (TF) Balance (000):	
(Including Loans):	\$37,160,837
TF as % of Total Wages*:	0.76
Interest Earned (000):	\$461,543
Avg. High Cost Multiple +:	0.52
High Cost Multiple +:	0.36

Labor Force	(Quarterly)	Past 12 Months
IUR (%) (NSA):	2.4	2.2
TUR (%) (NSA):	6.0	5.3
Total Unemployed (000):	9,370	8,139
Insured Unemployed (000) ***		
Regular Programs:	3,158.3	3,002.6
All Programs:	4,186.7	3,260.1
Reciency Rates (%) ***		
Regular Programs:	34	37
All Programs:	45	40
Cov. Employ. (000)**:	132,504	133,902
Civ. Labor Force (000):	155,399	155,064
Subject Employers (000):	7,493	7,636

Extended Benefits	(Quarterly)	Past 12 Months
Extended Benefits (000):	\$3,500	\$4,209
EB First Payments:	2,388	3,874
EB Weeks Claimed:	31,865	38,033
EB Exhaustions:	1,007	1,007

Loans	
Outstanding Loan Bal (000):	\$362,400
Loan per Cov Employee:	\$2.71
Loan as % of Total Wages*:	0.0074

* Based on extrapolated wages for the most recent 12 months.
 ** Wages and Covered Employment lag the rest of the Data Summary information by six months.
 *** Regular programs include State UI, UCFE and UCX.
 + Refers to most recent calendar year. Fourth and first quarter issues publish measure based on extrapolated wages. Second and third quarter issues publish measure based on actual wages.

See glossary for data definitions

DATA DEFINITIONS

[Back to Data Summary Home](#)

[Back to State Selection Page](#)

AVERAGE BENEFITS PER FIRST PAYMENT

Benefits Paid for all weeks compensated divided by the number of first payments.

AVERAGE DURATION

The number of weeks compensated for the year divided by the number of first payments. (ETA 5159)

AVERAGE HIGH COST RATE

The average of the three highest calendar year benefit cost rates in the last 20 years (or a period including three recessions, if longer). Benefit cost rates are benefits paid (including the state's share of extended benefits but excluding reimbursable benefits) as a percent of total wages in taxable employment.

AVERAGE HIGH COST MULTIPLE (AHCM)

Calendar Year Reserve Ratio (or "TF as % of Total Wages"); divided by the Average High Cost Rate.

AVERAGE TAX RATE (Taxable Wages)

Total employer contributions for a 12 month period divided by the total taxable wages for the same time period. (ES 202)

AVERAGE TAX RATE (Total Wages)

Total employer contributions for a 12 month period divided by the total wages paid by taxable employers for the same time period. (ES 202)

AVERAGE WEEKLY BENEFIT AMOUNT (AWBA)

Benefits Paid for Total Unemployment divided by Weeks Compensated for Total Unemployment. (ETA 5159)

AVERAGE WEEKLY WAGE

Total wages divided by covered employment, divided by 52 weeks. (ES 202)

BENEFITS PAID

The Unemployment benefits paid to individuals under a state program, usually the first 26 weeks of benefits, for all weeks compensated including partial payments. (ETA 5159)

CIVILIAN LABOR FORCE

The average number of individuals who are either employed or unemployed in the week of the 12th for the three months of the quarter. (Bureau of Labor Statistics)

COVERED EMPLOYMENT

The number of employees covered by Unemployment Insurance reported to the states by employers. (ETA 202)

EXHAUSTIONS

Number of claimants drawing the final payment of their original entitlement for a given program. (ETA 5159)

DATA DEFINITIONS

[Back to Data Summary Home](#)

[Back to State Selection Page](#)

EXHAUSTION RATE

A rate computed by dividing the average monthly exhaustions by the average monthly first payments. To allow for the normal flow of claimants through the program, the numerator lags the denominator by 26 weeks, e.g., the exhaustion rate for CY 1995.3 is computed by dividing the average monthly exhaustions for the twelve months ending September 1995, by the average monthly first payments for the twelve months ending March 1995.

EXTENDED BENEFITS

The supplemental program that pays extended compensation during periods of specified high unemployment in a state to individuals for weeks of unemployment after exhaustion of regular UI benefits. One-half of EB is funded by the state trust fund. (ETA 5159)

FIRST PAYMENTS

The first payment in a benefit year for a week of unemployment claimed under a specific program. This is used as a proxy for "beneficiaries" under a specific program. (ETA 5159)

HIGH-COST MULTIPLE (HCM)

"TF as % of Total Wages" divided by the High Cost Rate. The High Cost Rate is the highest historical ratio of benefits to wages for a 12-month period.

HIGHEST/LOWEST QUARTER

The value displayed represents the quarter with the highest or lowest value beginning with the January through March quarter of 1971 (CY 1971.1). Exhaustion rate and average duration are for 4-quarter periods, ending with the quarter shown.

INITIAL CLAIMS

Any notice of unemployment filed (1) to request a determination of entitlement to and eligibility for compensation or (2) to begin a second or subsequent period of eligibility within a benefit year or period of eligibility. Interstate claims are counted in the paying state. (ETA 5159)

INSURED UNEMPLOYED

The average weekly number of weeks claimed for the three months of the quarter. (ETA 5159)

INSURED UNEMPLOYMENT RATE (IUR)

The rate computed by dividing Insured Unemployed for the current quarter by Covered Employment for the first four of the last six completed quarters. (ETA 539)

INTEREST EARNED

The amount of interest earned on the Unemployment Trust Fund account. (unpublished US Treasury reports)

DATA DEFINITIONS

[Back to Data Summary Home](#)

[Back to State Selection Page](#)

OUTSTANDING LOAN BALANCE	Balance, as of the end of the quarter, of advances acquired by the state under Title XII of the Social Security Act. (unpublished US Treasury reports)
RANK	All rankings are from highest to lowest for a particular item. Ties receive the same rank.
RECIPIENCY RATE	The insured unemployed in regular programs as a percent of total unemployed.
STATE REVENUE	Funds deposited in state accounts in the Unemployment Trust Fund (UTF). These revenues are used to pay state UI benefits and the state share of EB. (ETA 2112)
SUBJECT EMPLOYERS	The number of employers subject to UI taxes. (ETA 581)
TAX YEAR	The twelve-month time period in which a state's tax rate schedules and taxable wage base remain constant. This is equivalent to the calendar year for most states, with the exception of NH, NJ, TN, and VT. These 4 states have July-June tax years.
TAXABLE WAGES	Wages paid to covered employees that are subject to State Unemployment Insurance taxes. (ES 202)
TAXABLE WAGE BASE	For each State, the maximum amount of wages paid to an employee by an employer during a tax year which are subject to UI taxes. Wages above this amount are not subject to tax. Note: The taxable wage bases published in this report are current as of the date of issue. Therefore, they do not match the time period of the taxable wages and average tax rate on taxable wages.
TF AS % OF TOTAL WAGES	Trust fund balance as a percent of estimated wages for the most recent 12 months. Also referred to as the Reserve Ratio. Estimated wages are based on the latest growth rate in the 12 month moving average (MA). <i>Example for 1997.4: Growth rate = ((MA1997.2-MA1996.4)/MA1996.4); MA1997.4=MA1997.2*growth rate)</i>
TOTAL UNEMPLOYED	The average number of individuals, 16 years of age or older, who do not have a job but are available for work and actively seeking work in the week of the 12th for the three months of the quarter. This includes individuals on layoff and waiting to report to a new job within 30 days. (Bureau of Labor Statistics-Not Seasonally Adjusted)

DATA DEFINITIONS

[Back to Data Summary Home](#)

[Back to State Selection Page](#)

TOTAL UNEMPLOYMENT RATE (TUR)

The rate computed by dividing Total Unemployed by the Civilian Labor Force. (Bureau of Labor Statistics)

TOTAL WAGES

All wages or remuneration paid to workers on all payrolls covered by Unemployment Insurance. (ES 202)

TOTAL WAGES (Taxable Employers)

All wages or remuneration paid to workers by all taxable employers. (ES 202)

TRUST FUND BALANCE (TF)

The balance in the individual state account in the Unemployment Trust Fund. (unpublished US Treasury reports)

UCFE

Unemployment Compensation for Federal Civilian Employees

UCX

Unemployment Compensation for Ex-Service Members

UNEMPLOYMENT TRUST FUND (UTF)

A fund established in the Treasury of United States which contains all monies deposited by state agencies to the credit of their unemployment fund accounts and Federal unemployment taxes collected by the Internal Revenue Service.

WEEKS CLAIMED

The number of weeks of benefits claimed, including weeks for which a waiting period or fixed disqualification period is being served. Interstate claims are counted in the paying state. (ETA 5159)

WEEKS COMPENSATED

The number of weeks claimed for which UI benefits are paid. Weeks compensated for partial unemployment are included. Interstate claims are counted in the paying state. (ETA 5159)