

Unemployment Insurance Data Summary

[Individual State Data](#)

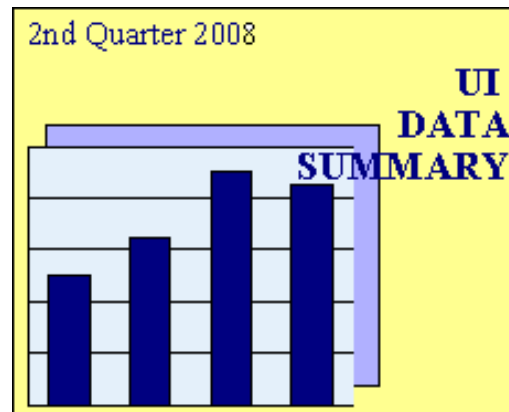
[US Summary Tables](#)

- [Summary Benefits Data](#)
- [Summary Financial Data](#)
- [Benefits and Duration Data](#)
- [Summary Labor Force Data](#)
- [Wage and Tax Rate Data](#)

[Charts](#)

[Glossary of data definitions](#)

[Choose another quarter](#)



The UI Data Summary is produced quarterly from state-reported data contained in the Unemployment Insurance Data Base (UIDB) as well as UI-related data from outside sources (e.g., Bureau of Labor Statistics data on employment and unemployment and U.S. Department of Treasury data on state UI trust fund activities). This data base is maintained by the Division of Fiscal and Actuarial Services, Office of Workforce Security (OWS), U.S. Department of Labor.

This report is intended to provide the user with a quick overview of the status of the UI system at the national and state levels. Tables are provided for each state and many data items are repeated on [summary tables](#) which show all states together. The [glossary](#) gives the definition of each data item in the report. Except for reciprocity rates, UCFE and UCX data is not included. Except for covered employment and wage data, which have a reporting/processing lag, all the data refers to the same quarter. This quarter is shown on the front cover and is also the first column heading on each individual state page. The year and quarter are indicated by the notation CYyyyy.q (e.g. CY1995.4). For many data items, the report shows -- in addition to the latest quarter -- data for the latest twelve months, the highest and lowest quarters historically, and the state's rank among all states. If a state has failed to report for a particular time period, estimated data are used; however, if the time period extends too far for reasonable estimates, blanks are displayed instead.

Your comments and suggestions are welcomed. For further information please contact **Kevin Stapleton** at the Division of Fiscal and Actuarial Services, Room C-4531, 200 Constitution Ave., NW, Washington, DC 20210, phone (202) 693-3009. You can also reach the receptionist at (202) 693-3039. If you want quarterly copies mailed to you, add your name to the [Data summary mailing list](#).

NOTE: Starting with 2006.3, interstate initial claims and weeks claimed are reported in the paying state rather than the state of residence.

ALSO: Blank cells appearing in any section of this report indicates that information is unavailable.

ATTENTION:

Now available on the Department of Labor, Office of Workforce Security website, and by mail, is a new report called “**Significant Measures of State Unemployment Insurance Tax Systems**” (<http://www.ows.doleta.gov/unemploy/finance.asp>). This will be a yearly report containing a compilation of new and existing tax measures for each state, which is intended to provide users with the information necessary to evaluate and compare state UI tax systems. The report is produced by the Division of Fiscal and Actuarial Services in the Office of Workforce Security and calendar years 2006 and 2005 are now available.

Charts Categories: 2nd Quarter 2008

[Data Summary Home](#)

[Data Summary Glossary](#)

[Data Summary Mailing List](#)

[OWS Homepage](#)

Click on desired Chart Category to jump to that section:

[Regular Benefits](#)

[Trust Fund Balance](#)

[Revenues](#)

[Regular AWBA](#)

[Initial Claims](#)

[Weeks Claimed](#)

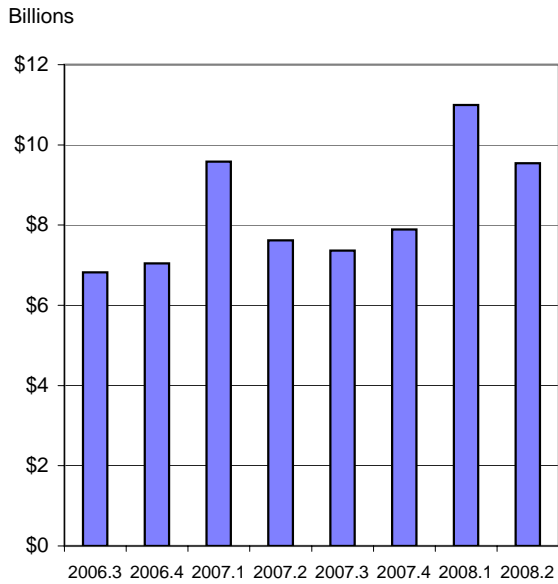
[First Payments](#)

[Exhaustions](#)

[AHCM](#)

Note: Blank cells appearing in any section of this report indicates that information is unavailable.

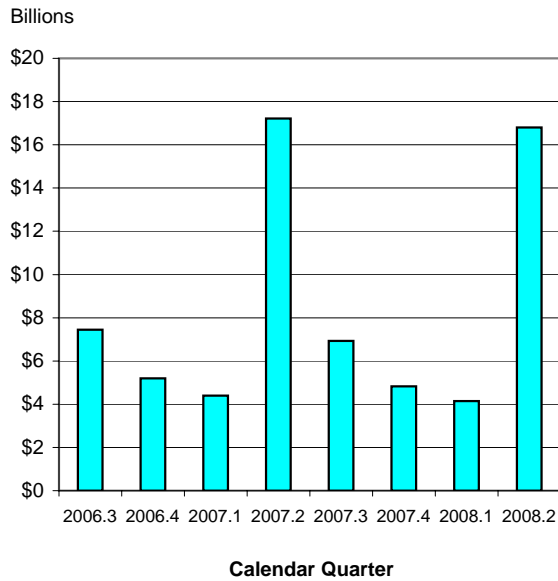
REGULAR BENEFITS



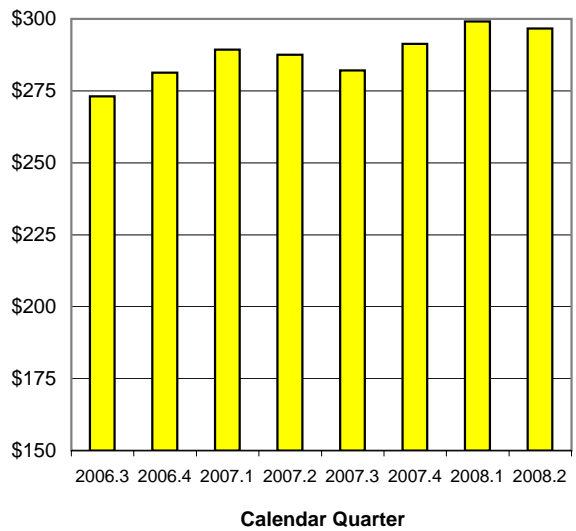
TRUST FUND BALANCE



REVENUES

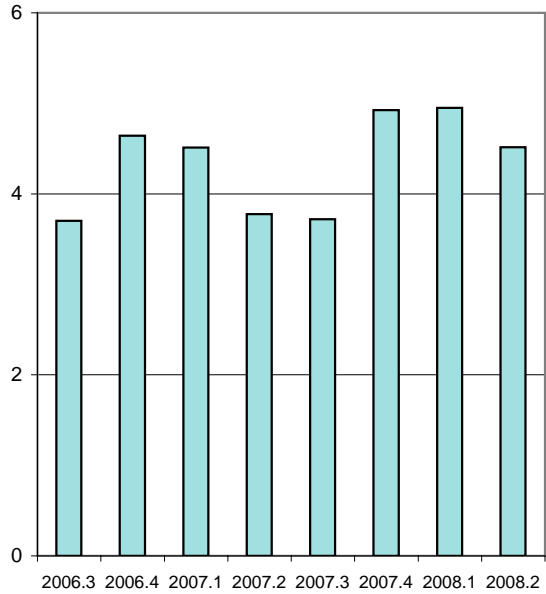


REGULAR AWBA



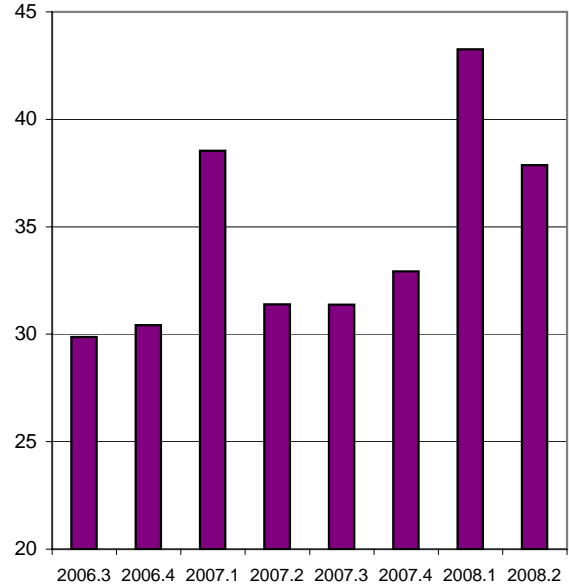
Millions

INITIAL CLAIMS



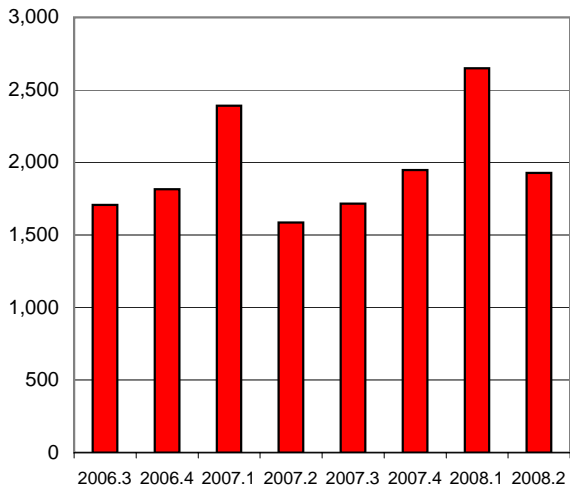
Millions

WEEKS CLAIMED



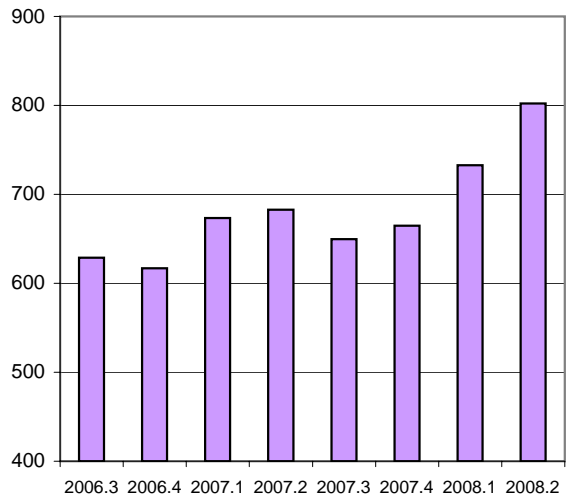
FIRST PAYMENTS

Thousands

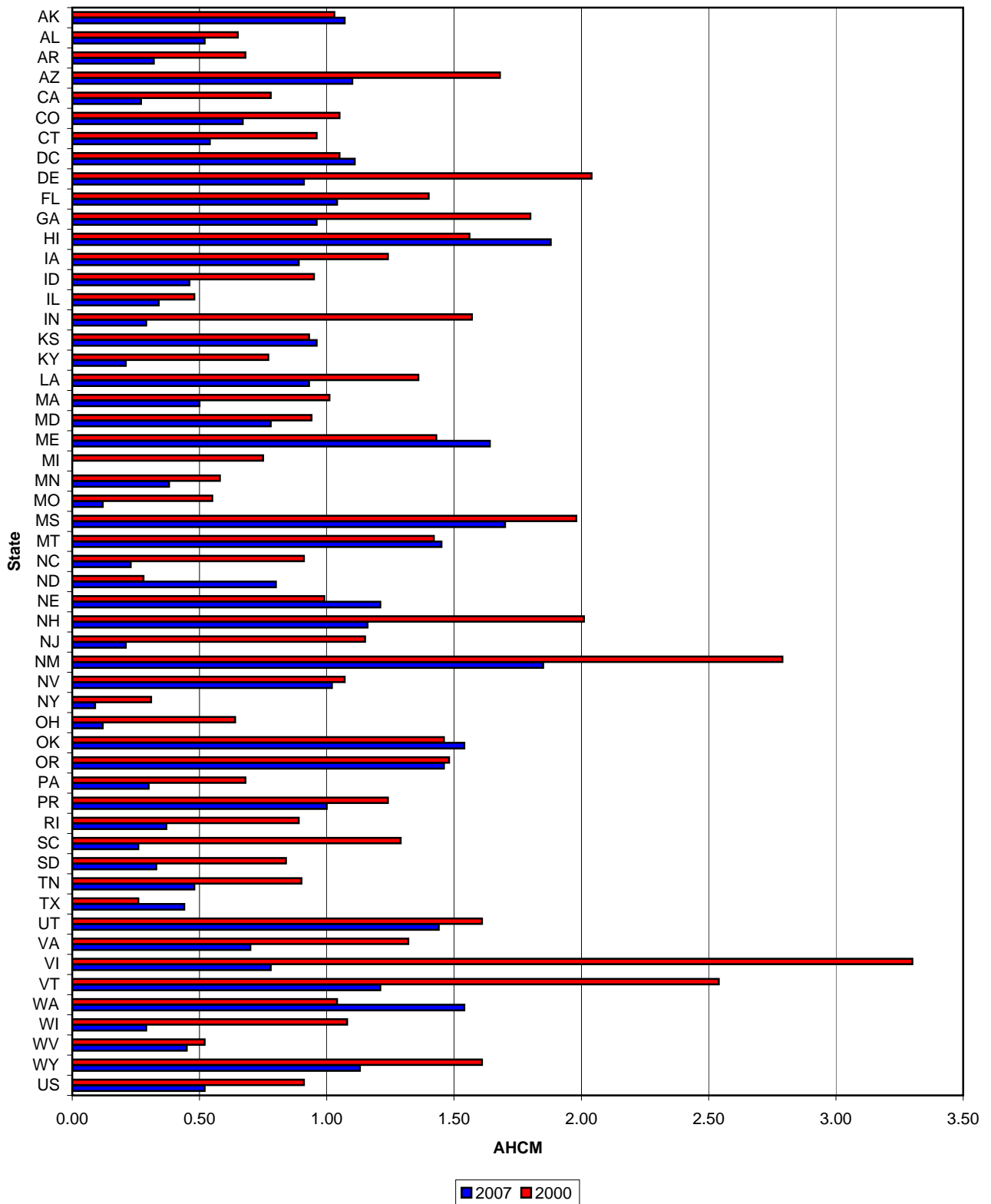


EXHAUSTIONS

Thousands



AHCM CY 2007 vs CY 2000



Summary Tables: 2nd Quarter 2008

[Data Summary Home](#)

[Data Summary Glossary](#)

[Data Summary Mailing List](#)

[OWS Homepage](#)

Click on desired information to jump to that section:

[Summary Benefits Data](#)

[Summary Financial Data](#)

[Benefits and Duration Data](#)

[Labor Force Information](#)

[Wage and Tax Rate Information](#)

Note: Blank cells appearing in any section of this report indicates that information is unavailable.

Regular Benefits Information by State for CYQ 2008.2

State	Initial Claims	First Payments	Weeks Claimed	Weeks Compensated	Exhaustions	Exhaustion Rate
Alabama	61,234	24,784	404,034	356,727	7,995	28.4%
Alaska	21,454	8,982	169,678	151,777	4,998	39.3%
Arizona	70,744	34,010	552,616	467,587	10,952	45.3%
Arkansas	49,059	20,918	387,452	280,074	8,135	36.6%
California	667,465	296,897	6,235,982	5,458,507	141,594	46.5%
Colorado	31,389	18,540	338,602	269,978	7,948	41.7%
Connecticut	56,561	27,832	545,300	516,972	10,390	32.8%
Delaware	16,074	5,110	116,137	107,972	2,131	34.4%
District of Columbia	7,962	4,230	97,374	84,591	2,504	56.2%
Florida	213,691	109,992	1,964,528	1,661,392	47,070	49.5%
Georgia	141,005	59,282	924,848	747,167	23,758	38.9%
Hawaii	22,046	9,695	140,191	120,292	1,636	25.4%
Idaho	23,063	10,092	188,959	175,681	5,190	30.9%
Illinois	174,502	82,016	1,886,076	1,694,072	33,846	36.7%
Indiana	115,144	43,890	792,225	681,605	21,944	41.8%
Iowa	57,442	20,410	317,712	305,984	6,623	24.4%
Kansas	32,292	14,323	244,192	220,268	4,790	30.9%
Kentucky	87,519	22,799	421,700	410,422	6,486	22.1%
Louisiana	39,272	15,658	275,365	222,286	5,451	39.6%
Maine	15,285	8,045	151,211	132,566	3,515	32.3%
Maryland	57,519	26,820	530,679	460,862	10,300	33.6%
Massachusetts	105,651	48,816	1,117,113	998,696	21,687	36.1%
Michigan	206,599	83,983	1,910,269	1,767,835	44,564	35.5%
Minnesota	60,117	27,358	690,081	615,879	16,022	35.9%
Mississippi	40,983	16,635	270,224	211,358	4,339	33.1%
Missouri	93,225	32,050	627,735	521,597	12,108	31.2%
Montana	11,633	4,868	99,397	90,395	2,488	34.7%
Nebraska	16,102	7,359	121,043	92,590	3,404	41.8%
Nevada	50,082	24,128	448,224	407,793	10,637	41.4%
New Hampshire	14,244	7,350	115,137	101,568	1,489	18.4%
New Jersey	143,588	70,236	1,549,940	1,444,058	38,142	45.8%
New Mexico	14,792	8,343	165,137	142,574	3,774	43.6%
New York	249,163	106,746	2,359,536	2,053,899	42,930	36.1%
North Carolina	170,690	62,435	1,193,743	983,036	29,719	44.4%
North Dakota	4,204	1,885	30,904	26,214	1,301	32.9%
Ohio	155,775	63,363	1,442,194	1,211,619	23,148	28.9%
Oklahoma	25,947	11,156	189,939	160,943	3,552	37.1%
Oregon	96,052	35,487	691,836	606,994	13,352	31.7%
Pennsylvania	301,901	105,669	2,234,344	1,978,811	36,317	29.9%
Puerto Rico	43,605	28,709	533,016	482,072	11,764	48.0%
Rhode Island	21,544	8,715	185,412	168,748	5,098	42.4%
South Carolina	79,485	30,889	568,685	456,255	12,770	41.0%
South Dakota	3,784	1,447	21,233	17,182	251	10.8%
Tennessee	78,699	37,777	575,553	549,122	14,557	37.8%
Texas	184,868	86,212	1,366,258	1,180,761	29,951	40.5%
Utah	18,692	7,801	147,654	124,598	3,197	35.6%
Vermont	12,146	5,621	100,109	95,996	1,437	19.0%
Virgin Islands	984	517	10,494	9,246	278	48.8%
Virginia	66,739	28,241	498,672	410,142	11,514	34.9%
Washington	109,020	43,055	751,617	662,012	11,253	21.4%
West Virginia	13,918	8,363	164,687	147,104	2,516	22.5%
Wisconsin	153,446	56,476	968,337	905,212	20,368	25.3%
Wyoming	4,950	2,342	36,538	35,365	939	30.8%
United States	4,513,350	1,928,357	37,869,922	33,186,456	802,122	37.3%

Financial Information by State for CYO 2008.2

State	Revenues (000) {Last 12 Months}	TF Balance (000)	TF as % of Total Wages*	Interest Earned (000)	AHCM+	HCM+
Alabama	\$230,840	\$433,093	0.74	\$4,960	0.52	0.33
Alaska	\$141,652	\$331,229	3.24	\$3,968	1.07	0.77
Arizona	\$296,489	\$1,033,150	1.15	\$12,334	1.12	0.45
Arkansas	\$263,532	\$166,642	0.51	\$1,830	0.32	0.18
California	\$4,906,309	\$2,666,360	0.42	\$29,417	0.27	0.18
Colorado	\$423,499	\$710,467	0.80	\$8,062	0.67	0.59
Connecticut	\$562,651	\$610,918	0.76	\$6,792	0.54	0.23
Delaware	\$82,610	\$166,653	1.04	\$1,982	0.90	0.42
District of Columbia	\$109,057	\$437,963	1.54	\$5,057	1.10	0.79
Florida	\$856,881	\$2,099,552	0.81	\$25,324	1.05	0.46
Georgia	\$526,299	\$1,280,173	0.90	\$14,682	0.98	0.43
Hawaii	\$101,370	\$527,352	2.92	\$6,498	1.88	1.50
Idaho	\$121,849	\$135,087	0.75	\$1,758	0.47	0.35
Illinois	\$2,054,440	\$1,906,219	0.82	\$21,130	0.35	0.30
Indiana	\$555,537	\$226,272	0.25	\$2,427	0.29	0.20
Iowa	\$360,198	\$713,920	1.69	\$8,413	0.88	0.68
Kansas	\$222,619	\$662,664	1.44	\$7,687	0.97	0.72
Kentucky	\$390,556	\$237,383	0.46	\$2,552	0.21	0.16
Louisiana	\$173,074	\$1,495,958	2.56	\$17,812	0.94	0.83
Maine	\$103,041	\$463,588	3.01	\$5,580	1.64	1.12
Maryland	\$390,435	\$986,316	1.09	\$11,837	0.79	0.53
Massachusetts	\$1,537,681	\$1,426,211	0.97	\$15,678	0.50	0.28
Michigan	\$1,604,913	\$30,931	0.02	\$130	N.A.	N.A.
Minnesota	\$841,255	\$490,776	0.51	\$5,624	0.38	0.30
Mississippi	\$107,322	\$739,738	2.59	\$8,816	1.70	1.32
Missouri	\$595,893	\$214,247	0.25	\$1,899	0.12	0.07
Montana	\$87,111	\$274,326	2.32	\$3,252	1.45	0.82
Nebraska	\$114,093	\$298,499	1.17	\$3,494	1.19	0.73
Nevada	\$366,205	\$754,146	1.59	\$9,129	1.02	0.63
New Hampshire	\$52,162	\$216,367	1.00	\$2,605	1.19	0.44
New Jersey	\$1,941,349	\$847,031	0.48	\$6,367	0.21	0.11
New Mexico	\$98,054	\$553,315	2.45	\$6,689	1.88	1.60
New York	\$2,318,341	\$698,517	0.17	\$6,285	0.09	0.04
North Carolina	\$924,771	\$467,345	0.36	\$5,142	0.23	0.13
North Dakota	\$51,110	\$129,498	1.52	\$1,540	0.79	0.71
Ohio	\$1,102,469	\$427,589	0.26	\$4,483	0.12	0.09
Oklahoma	\$179,951	\$860,554	1.89	\$10,274	1.51	1.39
Oregon	\$826,751	\$2,118,859	3.91	\$23,104	1.46	1.14
Pennsylvania	\$2,274,627	\$1,719,203	0.90	\$18,457	0.30	0.25
Puerto Rico	\$184,429	\$547,315	3.30	\$6,342	1.00	0.73
Rhode Island	\$188,087	\$127,123	0.89	\$1,461	0.38	0.25
South Carolina	\$287,867	\$182,893	0.34	\$2,034	0.26	0.13
South Dakota	\$26,678	\$26,048	0.27	\$289	0.33	0.25
Tennessee	\$405,120	\$619,344	0.69	\$7,165	0.48	0.30
Texas	\$1,081,520	\$1,874,615	0.47	\$22,946	0.45	0.41
Utah	\$166,066	\$847,903	2.27	\$10,168	1.47	1.17
Vermont	\$63,583	\$160,643	2.01	\$1,897	1.20	0.71
Virgin Islands	\$1,532	\$17,869	1.57	\$229	0.80	0.70
Virginia	\$354,966	\$779,103	0.57	\$9,318	0.71	0.45
Washington	\$1,156,175	\$4,000,453	3.78	\$47,372	1.53	0.98
West Virginia	\$140,869	\$251,965	1.41	\$2,907	0.45	0.35
Wisconsin	\$676,456	\$461,292	0.55	\$5,271	0.29	0.23
Wyoming	\$55,736	\$250,474	2.87	\$2,970	1.15	0.97
United States	\$32,686,081	\$39,705,150	0.81	\$453,437	0.52	0.36

+ Refers to most recent calendar year. Fourth and first quarter issues publish measure based on extrapolated wages; Second and third quarter issues publish measure based on actual wages.

* Based on extrapolated wages for the most recent 12 months.

N.A. : Not Applicable -- These states have outstanding debt exceeding their fund balances

Benefits and Duration Information by State for CYQ 2008.2

State	Regular Benefits Paid (000)	Extended Benefits Paid (000)	AWBA	Average Duration	Avg Benefits per First Payment
Alabama	\$68,528	\$0	\$194.64	12.0	\$2,256
Alaska	\$29,669	\$704	\$199.60	14.2	\$2,816
Arizona	\$100,256	\$0	\$216.69	15.1	\$3,147
Arkansas	\$70,478	\$0	\$265.84	13.8	\$3,441
California	\$1,613,170	\$0	\$306.67	16.8	\$4,955
Colorado	\$90,430	\$0	\$339.11	13.5	\$4,456
Connecticut	\$157,724	\$0	\$320.48	16.3	\$4,888
Delaware	\$27,267	\$0	\$256.79	16.9	\$4,298
District of Columbia	\$24,289	\$0	\$293.58	19.3	\$5,456
Florida	\$395,058	\$0	\$240.39	15.0	\$3,548
Georgia	\$198,479	\$0	\$272.46	11.5	\$2,971
Hawaii	\$49,160	\$0	\$414.60	13.2	\$5,174
Idaho	\$45,637	\$0	\$275.29	12.2	\$3,105
Illinois	\$526,129	\$0	\$311.70	17.4	\$5,370
Indiana	\$194,998	\$0	\$292.69	13.1	\$3,729
Iowa	\$87,569	\$0	\$299.78	12.4	\$3,530
Kansas	\$68,090	\$0	\$313.82	13.7	\$4,179
Kentucky	\$118,196	\$0	\$297.54	13.8	\$3,865
Louisiana	\$46,292	\$1	\$210.36	14.2	\$2,909
Maine	\$34,031	\$0	\$263.53	14.2	\$3,595
Maryland	\$138,747	\$0	\$305.89	15.2	\$4,413
Massachusetts	\$381,758	\$0	\$391.91	17.9	\$6,741
Michigan	\$515,241	\$0	\$301.04	14.7	\$4,217
Minnesota	\$208,160	\$0	\$344.82	17.0	\$5,673
Mississippi	\$36,775	\$0	\$178.98	13.9	\$2,400
Missouri	\$123,221	\$0	\$242.98	14.2	\$3,229
Montana	\$21,280	\$0	\$265.83	15.0	\$3,480
Nebraska	\$21,354	\$0	\$237.68	12.1	\$2,774
Nevada	\$114,982	\$0	\$289.13	14.8	\$4,167
New Hampshire	\$26,866	\$0	\$272.26	12.8	\$3,349
New Jersey	\$530,267	\$0	\$381.16	18.1	\$6,427
New Mexico	\$38,914	\$0	\$274.74	16.5	\$4,402
New York	\$605,622	\$0	\$307.07	16.9	\$4,921
North Carolina	\$270,592	\$0	\$284.16	14.1	\$3,852
North Dakota	\$7,184	\$0	\$276.14	12.0	\$3,320
Ohio	\$355,057	\$0	\$297.52	15.3	\$4,437
Oklahoma	\$42,487	\$0	\$270.20	14.8	\$3,723
Oregon	\$175,939	\$0	\$296.13	14.3	\$4,106
Pennsylvania	\$618,230	\$0	\$333.51	16.4	\$5,081
Puerto Rico	\$53,033	\$0	\$113.44	18.6	\$2,026
Rhode Island	\$60,001	\$0	\$367.04	16.0	\$5,729
South Carolina	\$106,708	\$0	\$240.78	13.7	\$3,129
South Dakota	\$3,943	\$0	\$233.80	11.2	\$2,551
Tennessee	\$118,836	\$0	\$219.83	14.0	\$3,021
Texas	\$348,687	\$0	\$304.72	14.8	\$4,245
Utah	\$37,910	\$0	\$310.96	13.5	\$4,063
Vermont	\$26,821	\$0	\$289.76	14.7	\$4,137
Virgin Islands	\$2,993	\$0	\$333.17	17.1	\$5,500
Virginia	\$111,996	\$0	\$280.00	12.6	\$3,376
Washington	\$221,084	\$0	\$351.54	13.2	\$4,322
West Virginia	\$34,246	\$0	\$240.30	13.7	\$3,218
Wisconsin	\$223,918	\$0	\$273.20	13.5	\$3,337
Wyoming	\$10,742	\$0	\$308.31	13.0	\$3,807
United States	\$9,539,046	\$705	\$296.69	15.3	\$4,343

Labor Force Information by State (Levels in thousands) for CYQ 2008.2

State	IUR (%)	TUR (%)	Covered Employment **	Civilian Labor Force	Total Unemployment	Insured Unemployment	
						Regular Programs *	All Programs +
Alabama	1.7	4.3	1,914	2,198	94.1	32.5	32.5
Alaska	3.9	6.8	287	360	24.6	11.8	12.2
Arizona	1.7	4.2	2,632	3,066	130.2	44.5	44.5
Arkansas	2.6	4.9	1,164	1,387	68.6	30.5	30.5
California	3.1	6.5	15,537	18,381	1,199.3	478.1	478.2
Colorado	1.2	4.8	2,266	2,758	131.1	26.5	26.5
Connecticut	2.4	5.2	1,691	1,888	97.9	40.9	40.9
Delaware	2.1	4.0	422	446	17.8	8.9	8.9
District of Columbia	0.9	6.2	493	330	20.4	4.7	4.7
Florida	2.0	5.3	7,822	9,249	488.3	153.6	153.6
Georgia	1.8	5.5	4,016	4,892	270.0	74.0	74.0
Hawaii	1.8	3.7	600	665	24.6	10.6	10.6
Idaho	2.3	3.3	652	755	24.8	15.3	15.3
Illinois	2.5	6.2	5,840	6,813	424.5	143.9	143.9
Indiana	2.1	5.2	2,897	3,237	168.4	60.6	60.6
Iowa	1.7	3.7	1,483	1,677	61.2	24.4	24.4
Kansas	1.4	4.1	1,349	1,494	62.0	18.4	18.4
Kentucky	1.9	6.1	1,789	2,056	124.5	34.1	34.1
Louisiana	1.2	4.0	1,866	2,023	80.8	21.9	21.9
Maine	2.0	5.1	595	709	36.2	11.8	11.8
Maryland	1.8	3.8	2,447	3,013	115.7	44.2	44.2
Massachusetts	2.6	4.6	3,225	3,403	158.1	84.4	84.4
Michigan	3.6	7.9	4,150	4,993	393.9	148.5	148.5
Minnesota	2.0	5.1	2,683	2,949	149.7	52.8	52.8
Mississippi	2.0	6.8	1,120	1,340	91.0	21.9	21.9
Missouri	1.9	5.5	2,693	3,038	168.3	49.7	49.7
Montana	1.9	3.9	428	507	19.8	8.1	8.1
Nebraska	1.0	3.2	910	1,001	32.2	9.3	9.3
Nevada	2.7	6.0	1,274	1,391	83.7	34.9	34.9
New Hampshire	1.5	3.9	628	745	28.9	9.2	9.2
New Jersey	3.0	5.1	3,953	4,513	229.9	115.7	115.7
New Mexico	1.6	3.9	800	951	36.9	13.1	13.1
New York	2.1	4.9	8,601	9,579	469.4	182.4	182.4
North Carolina	2.3	5.7	4,056	4,565	260.2	92.7	92.7
North Dakota	0.7	3.3	339	376	12.4	2.5	2.5
Ohio	2.1	6.1	5,263	6,003	364.3	112.8	112.8
Oklahoma	1.0	3.5	1,516	1,737	61.3	15.0	15.0
Oregon	3.2	5.4	1,718	1,944	104.8	54.4	54.4
Pennsylvania	3.0	5.0	5,612	6,385	321.9	170.4	170.4
Puerto Rico	4.2	11.0	1,014	1,369	150.3	42.2	42.2
Rhode Island	3.0	6.9	472	570	39.2	14.0	14.0
South Carolina	2.4	6.0	1,874	2,159	129.4	45.7	45.7
South Dakota	0.4	2.7	384	448	12.1	1.8	1.8
Tennessee	1.7	5.9	2,731	3,057	181.9	45.6	45.6
Texas	1.1	4.3	10,230	11,693	506.3	107.9	107.9
Utah	1.0	3.1	1,201	1,382	43.5	11.6	11.6
Vermont	2.5	4.8	301	352	16.7	7.5	7.5
Virgin Islands	1.5		45			0.7	0.7
Virginia	1.1	3.8	3,539	4,134	155.3	38.9	38.9
Washington	2.0	5.0	2,887	3,448	172.4	59.0	59.0
West Virginia	1.9	5.2	691	821	42.9	13.4	13.4
Wisconsin	2.7	4.5	2,780	3,092	139.3	75.0	75.0
Wyoming	0.9	2.9	274	291	8.4	2.6	2.6
United States	2.2	5.2	135,155	154,264	8,099.0	2,934.7	2,935.1

* Includes State UI, UCFE, and UCX

** Wages and Covered Employment lag the rest of the Data Summary information by 6 months.

+ Does not include TEUC

Note: Blank cells appearing in any section of this report indicates that information is unavailable.

Wage and Tax Rate Information by State for CYQ 2007.4

State	Total Wages (000)	Total Wages (Taxed Employers) (000)	Taxable Wages (000)	Average Tax Rates on:		Current Taxable Wage Base
				Taxable Wages	Total Wages	
Alabama	\$18,624,835	\$15,242,664	\$1,498,382	1.42	0.36	\$8,000
Alaska	\$3,190,946	\$2,490,398	\$843,595	2.49	1.53	\$31,300
Arizona	\$28,005,417	\$23,299,752	\$2,165,489	1.51	0.34	\$7,000
Arkansas	\$10,675,814	\$8,787,569	\$1,068,020	2.30	0.76	\$10,000
California	\$208,163,419	\$170,066,244	\$11,070,905	4.17	0.73	\$7,000
Colorado	\$27,051,239	\$23,150,906	\$2,689,457	1.77	0.47	\$10,000
Connecticut	\$25,263,529	\$20,494,650	\$2,002,452	2.56	0.67	\$15,000
Delaware	\$5,061,844	\$4,119,774	\$308,058	2.19	0.46	\$10,500
District of Columbia	\$8,883,829	\$7,383,062	\$395,801	2.03	0.32	\$9,000
Florida	\$81,685,103	\$67,934,667	\$5,977,505	1.48	0.34	\$7,000
Georgia	\$42,960,389	\$36,273,673	\$3,600,285	1.54	0.37	\$8,500
Hawaii	\$6,016,430	\$4,689,885	\$2,064,247	0.83	0.57	\$13,000
Idaho	\$5,743,203	\$4,718,225	\$1,941,792	1.15	0.76	\$32,200
Illinois	\$73,668,313	\$61,318,412	\$5,599,927	3.74	0.96	\$12,000
Indiana	\$27,810,121	\$23,059,257	\$1,839,172	2.75	0.61	\$7,000
Iowa	\$14,033,120	\$11,204,947	\$2,627,184	1.58	0.84	\$22,800
Kansas	\$12,978,403	\$11,914,273	\$2,378,734	1.45	0.48	\$8,000
Kentucky	\$16,858,418	\$13,536,552	\$1,321,711	2.64	0.68	\$8,000
Louisiana	\$18,804,109	\$15,341,285	\$1,459,602	1.42	0.33	\$7,000
Maine	\$5,370,462	\$4,034,462	\$556,219	1.82	0.67	\$12,000
Maryland	\$30,320,098	\$23,865,333	\$1,951,747	1.80	0.40	\$8,500
Massachusetts	\$47,380,109	\$38,795,413	\$5,102,086	3.56	1.04	\$14,000
Michigan	\$46,844,148	\$37,357,154	\$2,982,629	4.73	1.10	\$9,000
Minnesota	\$30,667,254	\$24,355,507	\$4,922,331	1.68	0.77	\$25,000
Mississippi	\$9,363,560	\$7,494,217	\$776,953	1.36	0.36	\$7,000
Missouri	\$27,099,861	\$22,018,883	\$2,449,288	2.21	0.67	\$12,000
Montana	\$3,584,763	\$3,084,962	\$1,240,263	1.20	0.78	\$23,800
Nebraska	\$8,474,674	\$6,681,059	\$707,303	1.65	0.47	\$9,000
Nevada	\$14,363,027	\$12,531,473	\$3,638,459	1.41	0.78	\$25,400
New Hampshire	\$7,430,010	\$6,000,718	\$424,049	1.25	0.26	\$8,000
New Jersey	\$55,928,439	\$45,942,724	\$9,249,758	2.03	0.88	\$27,700
New Mexico	\$7,493,170	\$5,932,451	\$1,500,257	0.95	0.47	\$19,900
New York	\$128,765,921	\$101,343,811	\$5,861,053	3.48	0.55	\$8,500
North Carolina	\$40,701,961	\$33,005,637	\$6,461,539	1.88	0.81	\$18,600
North Dakota	\$2,993,115	\$2,275,574	\$589,191	1.16	0.63	\$22,100
Ohio	\$53,912,781	\$43,085,224	\$3,915,360	2.51	0.64	\$9,000
Oklahoma	\$13,925,122	\$11,866,749	\$1,984,078	1.13	0.44	\$13,600
Oregon	\$17,652,057	\$14,028,347	\$4,712,774	1.95	1.16	\$30,200
Pennsylvania	\$63,213,175	\$49,787,483	\$3,633,170	5.01	1.06	\$8,000
Puerto Rico	\$6,654,155	\$4,493,560	\$532,922	3.18	1.06	\$7,000
Rhode Island	\$5,074,799	\$3,770,952	\$523,753	3.36	1.22	\$14,000
South Carolina	\$17,288,375	\$14,060,986	\$1,278,789	2.15	0.52	\$7,000
South Dakota	\$3,167,400	\$2,480,874	\$286,046	0.92	0.28	\$9,000
Tennessee	\$28,569,215	\$24,022,453	\$1,913,493	1.84	0.40	\$7,000
Texas	\$120,322,873	\$102,837,717	\$9,704,453	1.91	0.45	\$9,000
Utah	\$11,671,380	\$9,701,627	\$3,079,513	0.90	0.52	\$26,700
Vermont	\$2,871,945	\$2,100,741	\$191,388	2.87	0.74	\$8,000
Virgin Islands	\$421,042	\$282,228	\$91,292	0.20	0.11	\$21,800
Virginia	\$41,258,184	\$34,840,148	\$2,631,748	1.41	0.29	\$8,000
Washington	\$32,894,890	\$26,128,529	\$8,418,677	1.97	1.12	\$34,000
West Virginia	\$5,994,008	\$4,647,574	\$496,437	2.76	0.77	\$8,000
Wisconsin	\$27,698,692	\$21,977,638	\$2,181,881	2.69	0.79	\$10,500
Wyoming	\$2,873,345	\$2,301,424	\$526,622	1.42	0.66	\$20,100
United States	\$1,557,722,490	\$1,272,159,829	\$145,367,839	2.42	0.66	\$11,565

Individual State Pages: 2nd Quarter 2008

[Data Summary Home](#)

[Data Summary Glossary](#)

[Data Summary Mailing List](#)

[OWS Homepage](#)

Click on Desired State:

Alaska	Alabama	Arkansas	Arizona	California	Colorado
Connecticut	District of Columbia	Delaware	Florida	Georgia	Hawaii
Iowa	Idaho	Illinois	Indiana	Kansas	Kentucky
Louisiana	Massachusetts	Maryland	Maine	Michigan	Minnesota
Missouri	Mississippi	Montana	North Carolina	North Dakota	Nebraska
New Hampshire	New Jersey	New Mexico	Nevada	New York	Ohio
Oklahoma	Oregon	Pennsylvania	Puerto Rico	Rhode Island	South Carolina
South Dakota	Tennessee	Texas	Utah	Virginia	Virgin Islands
Vermont	Washington	Wisconsin	West Virginia	Wyoming	United States

Note: Blank cells appearing in any section of this report indicates that information is unavailable.

UI Data Summary for **Alabama**

CYQ: 2008.2

Benefits	(Quarterly)	Past 12 Months	Rank	High Value : Qtr		Low Value : Qtr	
Benefits Paid (000):	\$68,528	\$248,614	30	\$87,642	2002.1	\$7,540	1973.3
Initial Claims:	61,234	255,415	23	199,272	1982.1	27,174	1973.2
First Payments:	24,784	110,211	26	87,774	1982.1	11,594	1973.2
Weeks Claimed:	404,034	1,516,759	28	1,008,116	1983.1	202,249	1973.2
Wks Compensated:	356,727	1,321,036	28	843,002	1983.1	163,877	1973.4
Exhaustions:	7,995	29,023	28	23,814	1983.1	3,671	1973.4
Exhaustion Rate:		28.4%	44	35.6%	1983.3	17.4%	1990.3
Average Duration:		12.0	51	14.2	1983.2	9.2	1995.4
AWBA:	\$194.64	\$190.89	51	\$194.64	2008.2	\$40.78	1971.2
As % of AWW:	27.6		48				
Avg. Benefits per First Payment:		\$2,256					

Financial Information	Past 12 Months	Rank
State Revenues (000):	\$230,840	30
Total Wages (000)**:	\$18,624,835	24
Total Wages (Taxable Employers)(000)**:	\$15,242,664	25
Taxable Wages (000)**:	\$1,498,382	30
Avg. Weekly Wage**:	\$705.71	35
Avg. Tax Rate on Taxable Wages (%) **:	1.42	38
Avg. Tax Rate on Total Wages (%) **:	0.36	44
Calendar Yr Taxable Wage Base:	\$8,000	41
Trust Fund (TF) Balance (000):		
(Including Loans):	\$433,093	33
TF as % of Total Wages*:	0.74	36
Interest Earned (000):	\$4,960	33
Avg. High Cost Multiple +:	0.52	31
High Cost Multiple +:	0.33	33

Labor Force	(Quarterly)	Past 12 Mos	Rank
IUR (%):	1.7	1.6	36
TUR (%):	4.3	3.9	34
Total Unemp. (000):	94.1	86.6	28
Insured Unemployed (000) ***			
Regular Programs:	32.5	30.5	28
All Programs:	32.5	30.5	28
Reciency Rates (%) ***			
Regular Programs:	35	35	26
All Programs:	35	35	26
Covered Emp. (000)**:	1,914	1,900	23
Civ. Labor Force (000):	2,198	2,195	23
Subj. Employers (000):	91	91	27

Extended Benefits	(Quarterly)	Past 12 Months
Extended Benefits (000):	\$0	\$0
EB First Payments:	0	0
EB Weeks Claimed:	0	0
EB Exhaustions:	0	0

Loans	Rank
Outstanding Loan Bal (000):	\$0 2
Loan per Cov Employee:	\$0 2
Loan as % of Total Wages*:	0 2

* Based on extrapolated wages for the most recent 12 months.

** Wages and Covered Employment lag the rest of the Data Summary information by six months

*** Regular programs include State UI, UCFE and UCX.

+ Refers to most recent calendar year. Fourth and first quarter issues publish measure based on extrapolated wages. Second and third quarter issues publish measure based on actual wages.

See glossary for data definitions

Note: Blank cells appearing in any section of this report indicates that information is unavailable.

UI Data Summary for **Alaska**

CYQ: 2008.2

Benefits	(Quarterly)	Past 12 Months	Rank	High Value : Qtr		Low Value : Qtr	
				Value	Year	Value	Year
Benefits Paid (000):	\$29,669	\$109,006	43	\$44,533	2004.1	\$1,663	1971.3
Initial Claims:	21,454	88,309	39	30,954	1996.1	6,230	1973.2
First Payments:	8,982	38,710	38	19,617	1977.1	2,132	1971.3
Weeks Claimed:	169,678	643,225	38	244,721	1986.1	39,062	1971.3
Wks Compensated:	151,777	551,419	38	321,508	1977.1	36,386	1971.3
Exhaustions:	4,998	15,115	35	9,445	1986.2	937	1971.3
Exhaustion Rate:		39.3%	18	56.9%	1986.4	20.2%	1976.3
Average Duration:		14.2	26	19.9	1978.1	14.1	2002.2
AWBA:	\$199.60	\$201.71	50	\$203.39	2007.4	\$46.09	1971.3
As % of AWW:	24.3		52				
Avg. Benefits per First Payment:		\$2,816					

Financial Information	Past 12 Months	Rank
State Revenues (000):	\$141,652	37
Total Wages (000)**:	\$3,190,946	48
Total Wages (Taxable Employers)(000)**:	\$2,490,398	48
Taxable Wages (000)**:	\$843,595	41
Avg. Weekly Wage**:	\$822.62	18
Avg. Tax Rate on Taxable Wages (%) **:	2.49	16
Avg. Tax Rate on Total Wages (%) **:	1.53	1
Calendar Yr Taxable Wage Base:	\$31,300	3
Trust Fund (TF) Balance (000):		
(Including Loans):	\$331,229	35
TF as % of Total Wages*:	3.24	4
Interest Earned (000):	\$3,968	35
Avg. High Cost Multiple +:	1.07	16
High Cost Multiple +:	0.77	13

Labor Force	(Quarterly)	Past 12 Mos	Rank
IUR (%):	3.9	3.7	2
TUR (%):	6.8	6.5	4
Total Unemp. (000):	24.6	23.0	44
Insured Unemployed (000) ***			
Regular Programs:	11.8	11.1	40
All Programs:	12.2	11.2	40
Reciency Rates (%) ***			
Regular Programs:	48	48	8
All Programs:	50	49	8
Covered Emp. (000)**:	287	294	51
Civ. Labor Force (000):	360	355	49
Subj. Employers (000):	17	17	52

Extended Benefits	(Quarterly)	Past 12 Months
Extended Benefits (000):	\$704	\$704
EB First Payments:	1,480	1,480
EB Weeks Claimed:	6,157	6,157
EB Exhaustions:	0	0

Loans	Rank
Outstanding Loan Bal (000):	\$0 2
Loan per Cov Employee:	\$0 2
Loan as % of Total Wages*:	0 2

* Based on extrapolated wages for the most recent 12 months.

** Wages and Covered Employment lag the rest of the Data Summary information by six months

*** Regular programs include State UI, UCFE and UCX.

+ Refers to most recent calendar year. Fourth and first quarter issues publish measure based on extrapolated wages. Second and third quarter issues publish measure based on actual wages.

See glossary for data definitions

Note: Blank cells appearing in any section of this report indicates that information is unavailable.

UI Data Summary for Arizona

CYQ: 2008.2

Benefits	(Quarterly)	Past 12 Months	Rank	<u>High Value : Qtr</u>		<u>Low Value : Qtr</u>	
Benefits Paid (000):	\$100,256	\$324,992	26	\$100,822	2002.3	\$4,271	1972.2
Initial Claims:	70,744	220,583	21	73,262	2003.2	19,869	1973.2
First Payments:	34,010	103,276	18	34,734	2003.2	6,115	1972.2
Weeks Claimed:	552,616	1,817,367	21	684,378	2003.3	109,406	1972.3
Wks Compensated:	467,587	1,556,660	22	586,784	2002.3	82,840	1972.3
Exhaustions:	10,952	38,096	23	17,598	2003.3	1,807	1978.4
Exhaustion Rate:		45.3%	7	50.4%	1975.4	22.0%	1980.1
Average Duration:		15.1	17	18.4	1983.3	10.7	1980.1
AWBA:	\$216.69	\$211.19	48	\$219.72	2008.1	\$45.53	1971.2
As % of AWW:	27.4		49				
Avg. Benefits per First Payment:		\$3,147					

Financial Information	Past 12 Months	Rank
State Revenues (000):	\$296,489	27
Total Wages (000)**:	\$28,005,417	18
Total Wages (Taxable Employers)(000)**:	\$23,299,752	18
Taxable Wages (000)**:	\$2,165,489	24
Avg. Weekly Wage**:	\$791.38	21
Avg. Tax Rate on Taxable Wages (%) **:	1.51	35
Avg. Tax Rate on Total Wages (%) **:	0.34	46
Calendar Yr Taxable Wage Base:	\$7,000	49
Trust Fund (TF) Balance (000):		
(Including Loans):	\$1,033,150	11
TF as % of Total Wages*:	1.15	23
Interest Earned (000):	\$12,334	11
Avg. High Cost Multiple +:	1.12	14
High Cost Multiple +:	0.45	26

Labor Force	(Quarterly)	Past 12 Mos	Rank
IUR (%):	1.7	1.4	35
TUR (%):	4.2	4.1	35
Total Unemp. (000):	130.2	125.7	22
Insured Unemployed (000) ***			
Regular Programs:	44.5	36.8	21
All Programs:	44.5	36.8	21
Reciency Rates (%) ***			
Regular Programs:	34	29	27
All Programs:	34	29	27
Covered Emp. (000)**:	2,632	2,595	20
Civ. Labor Force (000):	3,066	3,058	17
Subj. Employers (000):	135	134	19

Extended Benefits	(Quarterly)	Past 12 Months
Extended Benefits (000):	\$0	\$0
EB First Payments:	0	0
EB Weeks Claimed:	0	0
EB Exhaustions:	0	0

Loans	Rank
Outstanding Loan Bal (000):	2
Loan per Cov Employee:	2
Loan as % of Total Wages*:	2

* Based on extrapolated wages for the most recent 12 months.

** Wages and Covered Employment lag the rest of the Data Summary information by six months

*** Regular programs include State UI, UCFE and UCX.

+ Refers to most recent calendar year. Fourth and first quarter issues publish measure based on extrapolated wages. Second and third quarter issues publish measure based on actual wages.

See glossary for data definitions

Note: Blank cells appearing in any section of this report indicates that information is unavailable.

UI Data Summary for **Arkansas**

CYQ: 2008.2

Benefits	(Quarterly)	Past 12 Months	Rank	High Value : Qtr		Low Value : Qtr	
Benefits Paid (000):	\$70,478	\$303,794	29	\$93,583	2002.1	\$3,532	1972.3
Initial Claims:	49,059	213,146	29	103,999	1981.4	20,162	1972.2
First Payments:	20,918	88,299	29	52,817	1975.1	7,104	1973.2
Weeks Claimed:	387,452	1,579,575	29	724,967	1975.1	116,813	1973.3
Wks Compensated:	280,074	1,220,342	30	557,933	1975.1	82,739	1973.3
Exhaustions:	8,135	30,506	27	13,071	1975.2	1,808	1973.4
Exhaustion Rate:		36.6%	23	40.9%	2003.2	21.6%	1986.2
Average Duration:		13.8	33	16.1	1976.1	9.8	1974.4
AWBA:	\$265.84	\$261.89	37	\$265.84	2008.2	\$39.54	1971.1
As % of AWW:	41.0		13				
Avg. Benefits per First Payment:		\$3,441					

Financial Information	Past 12 Months	Rank
State Revenues (000):	\$263,532	29
Total Wages (000)**:	\$10,675,814	34
Total Wages (Taxable Employers)(000)**:	\$8,787,569	34
Taxable Wages (000)**:	\$1,068,020	37
Avg. Weekly Wage**:	\$647.70	46
Avg. Tax Rate on Taxable Wages (%) **:	2.30	17
Avg. Tax Rate on Total Wages (%) **:	0.76	18
Calendar Yr Taxable Wage Base:	\$10,000	27
Trust Fund (TF) Balance (000):		
(Including Loans):	\$166,642	46
TF as % of Total Wages*:	0.51	41
Interest Earned (000):	\$1,830	47
Avg. High Cost Multiple +:	0.32	41
High Cost Multiple +:	0.18	45

Labor Force	(Quarterly)	Past 12 Mos	Rank
IUR (%):	2.6	2.7	12
TUR (%):	4.9	5.3	27
Total Unemp. (000):	68.6	73.0	32
Insured Unemployed (000) ***			
Regular Programs:	30.5	31.1	29
All Programs:	30.5	31.1	29
Reciency Rates (%) ***			
Regular Programs:	44	43	10
All Programs:	44	43	10
Covered Emp. (000)**:	1,164	1,153	34
Civ. Labor Force (000):	1,387	1,371	33
Subj. Employers (000):	69	68	34

Extended Benefits	(Quarterly)	Past 12 Months
Extended Benefits (000):	\$0	\$0
EB First Payments:	0	0
EB Weeks Claimed:	0	0
EB Exhaustions:	0	0

Loans	Rank
Outstanding Loan Bal (000):	\$0 2
Loan per Cov Employee:	\$0 2
Loan as % of Total Wages*:	0 2

* Based on extrapolated wages for the most recent 12 months.

** Wages and Covered Employment lag the rest of the Data Summary information by six months

*** Regular programs include State UI, UCFE and UCX.

+ Refers to most recent calendar year. Fourth and first quarter issues publish measure based on extrapolated wages. Second and third quarter issues publish measure based on actual wages.

See glossary for data definitions

Note: Blank cells appearing in any section of this report indicates that information is unavailable.

UI Data Summary for California

CYQ: 2008.2

Benefits	(Quarterly)	Past 12 Months	Rank	High Value : Qtr		Low Value : Qtr	
<u>Benefits Paid (000):</u>	\$1,613,170	\$5,673,096	1	\$1,630,000	2008.1	\$125,689	1973.3
<u>Initial Claims:</u>	667,465	2,536,866	1	1,073,146	1992.1	404,986	1973.2
<u>First Payments:</u>	296,897	1,144,835	1	469,351	1975.1	152,420	1973.2
<u>Weeks Claimed:</u>	6,235,982	22,319,637	1	8,150,226	1992.1	2,522,143	1973.3
<u>Wks Compensated:</u>	5,458,507	19,268,601	1	7,410,743	1992.1	2,184,142	1973.3
<u>Exhaustions:</u>	141,594	473,432	1	184,303	2002.3	48,106	1973.4
<u>Exhaustion Rate:</u>		46.5%	5	50.1%	2003.2	23.7%	1979.2
<u>Average Duration:</u>		16.8	10	18.7	1983.4	12.4	1979.1
<u>AWBA:</u>	\$306.67	\$304.98	16	\$307.65	2008.1	\$53.87	1971.3
As % of AWW:	31.7		42				
<u>Avg. Benefits per First Payment:</u>		\$4,955					

Financial Information	Past 12 Months	Rank
<u>State Revenues (000):</u>	\$4,906,309	1
<u>Total Wages (000)**:</u>	\$208,163,419	1
<u>Total Wages (Taxable Employers)(000)**:</u>	\$170,066,244	1
<u>Taxable Wages (000)**:</u>	\$11,070,905	1
<u>Avg. Weekly Wage**:</u>	\$967.94	6
<u>Avg. Tax Rate on Taxable Wages (%) **:</u>	4.17	3
<u>Avg. Tax Rate on Total Wages (%) **:</u>	0.73	21
<u>Calendar Yr Taxable Wage Base:</u>	\$7,000	49
<u>Trust Fund (TF) Balance (000):</u>		
(Including Loans):	\$2,666,360	2
<u>TF as % of Total Wages*:</u>	0.42	45
<u>Interest Earned (000):</u>	\$29,417	2
<u>Avg. High Cost Multiple +:</u>	0.27	45
<u>High Cost Multiple +:</u>	0.18	45

Labor Force	(Quarterly)	Past 12 Mos	Rank
<u>IUR (%):</u>	3.1	2.7	5
<u>TUR (%):</u>	6.5	6.0	6
<u>Total Unemp. (000):</u>	1,199.3	1,098.2	1
Insured Unemployed (000) ***			
<u>Regular Programs:</u>	478.1	428.0	1
<u>All Programs:</u>	478.2	428.0	1
Reciency Rates (%) ***			
<u>Regular Programs:</u>	40	39	16
<u>All Programs:</u>	40	39	16
<u>Covered Emp. (000)**:</u>	15,537	15,395	1
<u>Civ. Labor Force (000):</u>	18,381	18,309	1
<u>Subj. Employers (000):</u>	1,177	1,182	1

Extended Benefits	(Quarterly)	Past 12 Months
<u>Extended Benefits (000):</u>	\$0	\$0
EB First Payments:	0	0
EB Weeks Claimed:	0	0
EB Exhaustions:	0	0

Loans	Rank
<u>Outstanding Loan Bal (000):</u>	\$0 2
Loan per Cov Employee:	\$0 2
Loan as % of Total Wages*:	0 2

* Based on extrapolated wages for the most recent 12 months.

** Wages and Covered Employment lag the rest of the Data Summary information by six months

*** Regular programs include State UI, UCFE and UCX.

+ Refers to most recent calendar year. Fourth and first quarter issues publish measure based on extrapolated wages. Second and third quarter issues publish measure based on actual wages.

See glossary for data definitions

Note: Blank cells appearing in any section of this report indicates that information is unavailable.

UI Data Summary for Colorado

CYQ: 2008.2

Benefits	(Quarterly)	Past 12 Months	Rank	High Value : Qtr		Low Value : Qtr	
<u>Benefits Paid (000):</u>	\$90,430	\$335,846	27	\$153,005	2002.1	\$2,261	1972.3
<u>Initial Claims:</u>	31,389	125,430	34	68,252	1983.1	11,717	1972.3
<u>First Payments:</u>	18,540	75,361	31	37,139	1983.1	3,945	1972.3
<u>Weeks Claimed:</u>	338,602	1,281,123	30	671,262	1983.1	66,570	1972.3
<u>Wks Compensated:</u>	269,978	1,016,928	31	525,948	1983.1	37,409	1972.3
<u>Exhaustions:</u>	7,948	29,433	29	17,442	2002.2	828	1972.4
<u>Exhaustion Rate:</u>		41.7%	13	62.4%	1976.1	24.4%	1978.4
<u>Average Duration:</u>		13.5	40	16.7	1975.3	9.7	1974.1
<u>AWBA:</u>	\$339.11	\$334.36	7	\$339.11	2008.2	\$58.64	1971.3
As % of AWW:	39.3		22				
<u>Avg. Benefits per First Payment:</u>		\$4,456					

Financial Information	Past 12 Months	Rank
<u>State Revenues (000):</u>	\$423,499	20
<u>Total Wages (000)**:</u>	\$27,051,239	22
<u>Total Wages (Taxable Employers)(000)**:</u>	\$23,150,906	19
<u>Taxable Wages (000)**:</u>	\$2,689,457	20
<u>Avg. Weekly Wage**:</u>	\$863.98	10
<u>Avg. Tax Rate on Taxable Wages (%) **:</u>	1.77	30
<u>Avg. Tax Rate on Total Wages (%) **:</u>	0.47	35
<u>Calendar Yr Taxable Wage Base:</u>	\$10,000	27
<u>Trust Fund (TF) Balance (000):</u>		
(Including Loans):	\$710,467	20
<u>TF as % of Total Wages*:</u>	0.80	33
<u>Interest Earned (000):</u>	\$8,062	19
<u>Avg. High Cost Multiple +:</u>	0.67	29
<u>High Cost Multiple +:</u>	0.59	22

Labor Force	(Quarterly)	Past 12 Mos	Rank
<u>IUR (%):</u>	1.2	1.1	44
<u>TUR (%):</u>	4.8	4.3	29
<u>Total Unemp. (000):</u>	131.1	117.9	21
Insured Unemployed (000) ***			
<u>Regular Programs:</u>	26.5	25.2	30
<u>All Programs:</u>	26.5	25.2	30
Reciency Rates (%) ***			
<u>Regular Programs:</u>	20	21	51
<u>All Programs:</u>	20	21	51
<u>Covered Emp. (000)**:</u>	2,266	2,241	22
<u>Civ. Labor Force (000):</u>	2,758	2,743	22
<u>Subj. Employers (000):</u>	157	158	15

Extended Benefits	(Quarterly)	Past 12 Months
<u>Extended Benefits (000):</u>	\$0	\$0
EB First Payments:	0	0
EB Weeks Claimed:	0	0
EB Exhaustions:	0	0

Loans	Rank
<u>Outstanding Loan Bal (000):</u>	\$0 2
Loan per Cov Employee:	\$0 2
Loan as % of Total Wages*:	0 2

* Based on extrapolated wages for the most recent 12 months.

** Wages and Covered Employment lag the rest of the Data Summary information by six months

*** Regular programs include State UI, UCFE and UCX.

+ Refers to most recent calendar year. Fourth and first quarter issues publish measure based on extrapolated wages. Second and third quarter issues publish measure based on actual wages.

See glossary for data definitions

Note: Blank cells appearing in any section of this report indicates that information is unavailable.

UI Data Summary for **Connecticut**

CYQ: 2008.2

Benefits	(Quarterly)	Past 12 Months	Rank	High Value : Qtr		Low Value : Qtr	
Benefits Paid (000):	\$157,724	\$622,023	18	\$232,930	2003.1	\$23,568	1973.4
Initial Claims:	56,561	223,481	27	158,726	1975.1	33,893	1988.2
First Payments:	27,832	127,253	23	92,026	1975.1	14,892	1987.2
Weeks Claimed:	545,300	2,197,719	22	1,196,204	1975.1	194,676	1987.4
Wks Compensated:	516,972	2,071,842	20	1,157,832	1975.2	191,037	1987.4
Exhaustions:	10,390	39,741	25	26,941	1975.3	2,849	1980.1
Exhaustion Rate:		32.8%	35	40.1%	1993.3	12.3%	1979.2
Average Duration:		16.3	13	18.7	1992.4	10.2	1974.1
AWBA:	\$320.48	\$314.90	10	\$325.37	2008.1	\$61.34	1971.3
As % of AWW:	28.7		46				
Avg. Benefits per First Payment:		\$4,888					

Financial Information	Past 12 Months	Rank
State Revenues (000):	\$562,651	17
Total Wages (000)**:	\$25,263,529	23
Total Wages (Taxable Employers)(000)**:	\$20,494,650	23
Taxable Wages (000)**:	\$2,002,452	22
Avg. Weekly Wage**:	\$1,115.96	3
Avg. Tax Rate on Taxable Wages (%) **:	2.56	14
Avg. Tax Rate on Total Wages (%) **:	0.67	24
Calendar Yr Taxable Wage Base:	\$15,000	16
Trust Fund (TF) Balance (000):		
(Including Loans):	\$610,918	24
TF as % of Total Wages*:	0.76	34
Interest Earned (000):	\$6,792	22
Avg. High Cost Multiple +:	0.54	30
High Cost Multiple +:	0.23	42

Labor Force	(Quarterly)	Past 12 Mos	Rank
IUR (%):	2.4	2.5	15
TUR (%):	5.2	4.9	21
Total Unemp. (000):	97.9	92.6	27
Insured Unemployed (000) ***			
Regular Programs:	40.9	41.3	24
All Programs:	40.9	41.3	24
Reciency Rates (%) ***			
Regular Programs:	42	45	12
All Programs:	42	45	12
Covered Emp. (000)**:	1,691	1,666	28
Civ. Labor Force (000):	1,888	1,879	28
Subj. Employers (000):	99	100	26

Extended Benefits	(Quarterly)	Past 12 Months
Extended Benefits (000):	\$0	\$0
EB First Payments:	0	0
EB Weeks Claimed:	0	0
EB Exhaustions:	0	0

Loans	Rank
Outstanding Loan Bal (000):	\$0 2
Loan per Cov Employee:	\$0 2
Loan as % of Total Wages*:	0 2

* Based on extrapolated wages for the most recent 12 months.

** Wages and Covered Employment lag the rest of the Data Summary information by six months

*** Regular programs include State UI, UCFE and UCX.

+ Refers to most recent calendar year. Fourth and first quarter issues publish measure based on extrapolated wages. Second and third quarter issues publish measure based on actual wages.

See glossary for data definitions

Note: Blank cells appearing in any section of this report indicates that information is unavailable.

UI Data Summary for Delaware

CYQ: 2008.2

Benefits	(Quarterly)	Past 12 Months	Rank	High Value : Qtr		Low Value : Qtr	
<u>Benefits Paid (000):</u>	\$27,267	\$109,606	44	\$37,777	2003.1	\$1,884	1972.4
<u>Initial Claims:</u>	16,074	62,167	42	27,988	1974.4	6,192	1973.2
<u>First Payments:</u>	5,110	25,502	47	17,084	1975.1	2,130	1987.2
<u>Weeks Claimed:</u>	116,137	465,853	45	217,510	1975.1	27,787	1987.4
<u>Wks Compensated:</u>	107,972	430,661	44	225,281	1975.1	26,548	1987.4
<u>Exhaustions:</u>	2,131	8,218	46	5,341	1975.2	256	1988.2
<u>Exhaustion Rate:</u>		34.4%	31	44.8%	1976.1	10.5%	1989.3
<u>Average Duration:</u>		16.9	9	19.1	1976.1	9.7	1986.1
<u>AWBA:</u>	\$256.79	\$254.96	40	\$258.02	2007.1	\$50.54	1971.4
As % of AWW:	28.3		47				
<u>Avg. Benefits per First Payment:</u>		\$4,298					

Financial Information	Past 12 Months	Rank
<u>State Revenues (000):</u>	\$82,610	47
<u>Total Wages (000)**:</u>	\$5,061,844	45
<u>Total Wages (Taxable Employers)(000)**:</u>	\$4,119,774	44
<u>Taxable Wages (000)**:</u>	\$308,058	50
<u>Avg. Weekly Wage**:</u>	\$907.68	8
<u>Avg. Tax Rate on Taxable Wages (%) **:</u>	2.19	19
<u>Avg. Tax Rate on Total Wages (%) **:</u>	0.46	38
<u>Calendar Yr Taxable Wage Base:</u>	\$10,500	25
<u>Trust Fund (TF) Balance (000):</u>		
(Including Loans):	\$166,653	45
<u>TF as % of Total Wages*:</u>	1.04	25
<u>Interest Earned (000):</u>	\$1,982	44
<u>Avg. High Cost Multiple +:</u>	0.90	23
<u>High Cost Multiple +:</u>	0.42	29

Labor Force	(Quarterly)	Past 12 Mos	Rank
<u>IUR (%):</u>	2.1	2.1	21
<u>TUR (%):</u>	4.0	3.7	38
<u>Total Unemp. (000):</u>	17.8	16.3	48
Insured Unemployed (000) ***			
<u>Regular Programs:</u>	8.9	9.0	46
<u>All Programs:</u>	8.9	9.0	46
Reciency Rates (%) ***			
<u>Regular Programs:</u>	50	55	7
<u>All Programs:</u>	50	55	7
<u>Covered Emp. (000)**:</u>	422	418	47
<u>Civ. Labor Force (000):</u>	446	444	47
<u>Subj. Employers (000):</u>	27	27	47

Extended Benefits	(Quarterly)	Past 12 Months
<u>Extended Benefits (000):</u>	\$0	\$0
EB First Payments:	0	0
EB Weeks Claimed:	0	0
EB Exhaustions:	0	0

Loans	Rank
<u>Outstanding Loan Bal (000):</u>	\$0 2
Loan per Cov Employee:	\$0 2
Loan as % of Total Wages*:	0 2

* Based on extrapolated wages for the most recent 12 months.

** Wages and Covered Employment lag the rest of the Data Summary information by six months

*** Regular programs include State UI, UCFE and UCX.

+ Refers to most recent calendar year. Fourth and first quarter issues publish measure based on extrapolated wages. Second and third quarter issues publish measure based on actual wages.

See glossary for data definitions

Note: Blank cells appearing in any section of this report indicates that information is unavailable.

UI Data Summary for District of Columbia

CYQ: 2008.2

Benefits	(Quarterly)	Past 12 Months	Rank	High Value : Qtr		Low Value : Qtr	
<u>Benefits Paid (000):</u>	\$24,289	\$97,080	47	\$39,715	2002.1	\$4,732	1971.4
<u>Initial Claims:</u>	7,962	30,394	49	15,303	1975.2	3,624	2005.4
<u>First Payments:</u>	4,230	17,794	49	11,131	1975.3	2,779	2003.2
<u>Weeks Claimed:</u>	97,374	397,639	49	205,018	1975.3	48,862	2006.2
<u>Wks Compensated:</u>	84,591	343,959	49	201,986	1975.3	66,758	2000.4
<u>Exhaustions:</u>	2,504	9,526	44	5,220	1991.3	1,310	1971.1
<u>Exhaustion Rate:</u>		56.2%	1	93.7%	2003.2	37.4%	1979.2
<u>Average Duration:</u>		19.3	1	32.6	2003.2	15.7	2001.4
<u>AWBA:</u>	\$293.58	\$289.15	24	\$314.28	2002.1	\$57.77	1971.1
As % of AWW:	22.3		53				
<u>Avg. Benefits per First Payment:</u>		\$5,456					

Financial Information	Past 12 Months	Rank
<u>State Revenues (000):</u>	\$109,057	41
<u>Total Wages (000)**:</u>	\$8,883,829	36
<u>Total Wages (Taxable Employers)(000)**:</u>	\$7,383,062	36
<u>Taxable Wages (000)**:</u>	\$395,801	48
<u>Avg. Weekly Wage**:</u>	\$1,315.94	1
<u>Avg. Tax Rate on Taxable Wages (%) **:</u>	2.03	21
<u>Avg. Tax Rate on Total Wages (%) **:</u>	0.32	49
<u>Calendar Yr Taxable Wage Base:</u>	\$9,000	31
<u>Trust Fund (TF) Balance (000):</u>		
(Including Loans):	\$437,963	32
<u>TF as % of Total Wages*:</u>	1.54	18
<u>Interest Earned (000):</u>	\$5,057	32
<u>Avg. High Cost Multiple +:</u>	1.10	15
<u>High Cost Multiple +:</u>	0.79	12

Labor Force	(Quarterly)	Past 12 Mos	Rank
<u>IUR (%):</u>	0.9	1.0	50
<u>TUR (%):</u>	6.2	6.0	8
<u>Total Unemp. (000):</u>	20.4	19.8	46
Insured Unemployed (000) ***			
<u>Regular Programs:</u>	4.7	4.8	49
<u>All Programs:</u>	4.7	4.8	49
Reciency Rates (%) ***			
<u>Regular Programs:</u>	23	24	48
<u>All Programs:</u>	23	24	48
<u>Covered Emp. (000)**:</u>	493	487	44
<u>Civ. Labor Force (000):</u>	330	329	51
<u>Subj. Employers (000):</u>	28	28	46

Extended Benefits	(Quarterly)	Past 12 Months
<u>Extended Benefits (000):</u>	\$0	\$0
EB First Payments:	0	0
EB Weeks Claimed:	0	0
EB Exhaustions:	0	0

Loans	Rank
<u>Outstanding Loan Bal (000):</u>	\$0 2
Loan per Cov Employee:	\$0 2
Loan as % of Total Wages*:	0 2

* Based on extrapolated wages for the most recent 12 months.

** Wages and Covered Employment lag the rest of the Data Summary information by six months

*** Regular programs include State UI, UCFE and UCX.

+ Refers to most recent calendar year. Fourth and first quarter issues publish measure based on extrapolated wages. Second and third quarter issues publish measure based on actual wages.

See glossary for data definitions

Note: Blank cells appearing in any section of this report indicates that information is unavailable.

UI Data Summary for Florida

CYQ: 2008.2

Benefits	(Quarterly)	Past 12 Months	Rank	High Value : Qtr		Low Value : Qtr	
<u>Benefits Paid (000):</u>	\$395,058	\$1,395,301	7	\$395,058	2008.2	\$7,873	1973.2
<u>Initial Claims:</u>	213,691	733,495	4	213,691	2008.2	47,634	1972.4
<u>First Payments:</u>	109,992	393,235	2	109,992	2008.2	13,559	1973.1
<u>Weeks Claimed:</u>	1,964,528	6,970,481	4	2,038,601	1993.3	290,942	1973.2
<u>Wks Compensated:</u>	1,661,392	5,898,235	6	1,661,392	2008.2	161,460	1973.1
<u>Exhaustions:</u>	47,070	163,448	2	53,422	1975.3	5,076	1973.2
<u>Exhaustion Rate:</u>		49.5%	2	62.4%	1975.2	33.8%	1984.3
<u>Average Duration:</u>		15.0	19	16.4	1993.1	10.5	1974.1
<u>AWBA:</u>	\$240.39	\$239.11	43	\$241.15	2008.1	\$38.12	1971.1
As % of AWW:	31.7		41				
<u>Avg. Benefits per First Payment:</u>		\$3,548					

Financial Information	Past 12 Months	Rank
<u>State Revenues (000):</u>	\$856,881	12
<u>Total Wages (000)**:</u>	\$81,685,103	4
<u>Total Wages (Taxable Employers)(000)**:</u>	\$67,934,667	4
<u>Taxable Wages (000)**:</u>	\$5,977,505	5
<u>Avg. Weekly Wage**:</u>	\$757.37	24
<u>Avg. Tax Rate on Taxable Wages (%) **:</u>	1.48	36
<u>Avg. Tax Rate on Total Wages (%) **:</u>	0.34	47
<u>Calendar Yr Taxable Wage Base:</u>	\$7,000	49
<u>Trust Fund (TF) Balance (000):</u>		
(Including Loans):	\$2,099,552	4
<u>TF as % of Total Wages*:</u>	0.81	32
<u>Interest Earned (000):</u>	\$25,324	3
<u>Avg. High Cost Multiple +:</u>	1.05	17
<u>High Cost Multiple +:</u>	0.46	24

Labor Force	(Quarterly)	Past 12 Mos	Rank
<u>IUR (%):</u>	2.0	1.7	27
<u>TUR (%):</u>	5.3	4.7	18
<u>Total Unemp. (000):</u>	488.3	431.8	3
Insured Unemployed (000) ***			
<u>Regular Programs:</u>	153.6	136.7	4
<u>All Programs:</u>	153.6	136.7	4
Reciency Rates (%) ***			
<u>Regular Programs:</u>	31	32	32
<u>All Programs:</u>	31	32	32
<u>Covered Emp. (000)**:</u>	7,822	7,818	4
<u>Civ. Labor Force (000):</u>	9,249	9,208	4
<u>Subj. Employers (000):</u>	510	505	2

Extended Benefits	(Quarterly)	Past 12 Months
<u>Extended Benefits (000):</u>	\$0	\$0
EB First Payments:	0	0
EB Weeks Claimed:	0	0
EB Exhaustions:	0	0

Loans	Rank
<u>Outstanding Loan Bal (000):</u>	\$0 2
Loan per Cov Employee:	\$0 2
Loan as % of Total Wages*:	0 2

* Based on extrapolated wages for the most recent 12 months.

** Wages and Covered Employment lag the rest of the Data Summary information by six months

*** Regular programs include State UI, UCFE and UCX.

+ Refers to most recent calendar year. Fourth and first quarter issues publish measure based on extrapolated wages. Second and third quarter issues publish measure based on actual wages.

See glossary for data definitions

Note: Blank cells appearing in any section of this report indicates that information is unavailable.

UI Data Summary for Georgia

CYQ: 2008.2

Benefits	(Quarterly)	Past 12 Months	Rank	High Value : Qtr		Low Value : Qtr	
Benefits Paid (000):	\$198,479	\$712,729	15	\$218,168	2002.1	\$6,287	1972.4
Initial Claims:	141,005	536,223	12	293,875	1982.1	24,591	1973.2
First Payments:	59,282	239,933	11	157,459	1975.1	9,055	1973.2
Weeks Claimed:	924,848	3,352,808	13	1,526,729	1975.1	182,945	1972.4
Wks Compensated:	747,167	2,749,964	13	1,376,688	1975.1	137,491	1972.4
Exhaustions:	23,758	82,430	10	47,966	1975.2	4,870	1972.4
Exhaustion Rate:		38.9%	19	54.9%	1975.2	19.6%	1990.3
Average Duration:		11.5	52	14.1	1976.1	8.2	1986.2
AWBA:	\$272.46	\$267.04	34	\$272.46	2008.2	\$43.29	1971.1
As % of AWW:	34.0		37				
Avg. Benefits per First Payment:		\$2,971					

Financial Information	Past 12 Months	Rank
State Revenues (000):	\$526,299	19
Total Wages (000)**:	\$42,960,389	11
Total Wages (Taxable Employers)(000)**:	\$36,273,673	11
Taxable Wages (000)**:	\$3,600,285	13
Avg. Weekly Wage**:	\$801.15	20
Avg. Tax Rate on Taxable Wages (%) **:	1.54	34
Avg. Tax Rate on Total Wages (%) **:	0.37	43
Calendar Yr Taxable Wage Base:	\$8,500	35
Trust Fund (TF) Balance (000):		
(Including Loans):	\$1,280,173	10
TF as % of Total Wages*:	0.90	29
Interest Earned (000):	\$14,682	10
Avg. High Cost Multiple +:	0.98	20
High Cost Multiple +:	0.43	28

Labor Force	(Quarterly)	Past 12 Mos	Rank
IUR (%):	1.8	1.7	32
TUR (%):	5.5	5.0	16
Total Unemp. (000):	270.0	240.3	9
Insured Unemployed (000) ***			
Regular Programs:	74.0	67.6	13
All Programs:	74.0	67.6	13
Reciency Rates (%) ***			
Regular Programs:	27	28	40
All Programs:	27	28	40
Covered Emp. (000)**:	4,016	3,981	10
Civ. Labor Force (000):	4,892	4,858	9
Subj. Employers (000):	220	218	10

Extended Benefits	(Quarterly)	Past 12 Months
Extended Benefits (000):	\$0	\$0
EB First Payments:	0	0
EB Weeks Claimed:	0	0
EB Exhaustions:	0	0

Loans	Rank
Outstanding Loan Bal (000):	\$0 2
Loan per Cov Employee:	\$0 2
Loan as % of Total Wages*:	0 2

* Based on extrapolated wages for the most recent 12 months.

** Wages and Covered Employment lag the rest of the Data Summary information by six months

*** Regular programs include State UI, UCFE and UCX.

+ Refers to most recent calendar year. Fourth and first quarter issues publish measure based on extrapolated wages. Second and third quarter issues publish measure based on actual wages.

See glossary for data definitions

Note: Blank cells appearing in any section of this report indicates that information is unavailable.

UI Data Summary for Hawaii

CYQ: 2008.2

Benefits	(Quarterly)	Past 12 Months	Rank	High Value : Qtr		Low Value : Qtr	
<u>Benefits Paid (000):</u>	\$49,160	\$150,527	34	\$53,765	2001.4	\$6,426	1972.3
<u>Initial Claims:</u>	22,046	70,793	37	35,479	2001.4	10,200	1990.3
<u>First Payments:</u>	9,695	29,091	37	18,185	2001.4	4,105	1989.4
<u>Weeks Claimed:</u>	140,191	447,488	43	241,177	1976.1	57,623	1989.4
<u>Wks Compensated:</u>	120,292	384,804	43	224,118	1976.1	51,372	1989.4
<u>Exhaustions:</u>	1,636	5,902	47	5,073	1976.3	728	1989.4
<u>Exhaustion Rate:</u>		25.4%	45	43.7%	1976.4	16.3%	1990.1
<u>Average Duration:</u>		13.2	41	19.2	2002.4	11.1	1991.1
<u>AWBA:</u>	\$414.60	\$400.96	1	\$414.60	2008.2	\$63.43	1971.1
As % of AWW:	56.3		1				
<u>Avg. Benefits per First Payment:</u>		\$5,174					

Financial Information	Past 12 Months	Rank
<u>State Revenues (000):</u>	\$101,370	44
<u>Total Wages (000)**:</u>	\$6,016,430	41
<u>Total Wages (Taxable Employers)(000)**:</u>	\$4,689,885	41
<u>Taxable Wages (000)**:</u>	\$2,064,247	34
<u>Avg. Weekly Wage**:</u>	\$736.42	29
<u>Avg. Tax Rate on Taxable Wages (%) **:</u>	0.83	52
<u>Avg. Tax Rate on Total Wages (%) **:</u>	0.57	30
<u>Calendar Yr Taxable Wage Base:</u>	\$13,000	20
<u>Trust Fund (TF) Balance (000):</u>		
(Including Loans):	\$527,352	27
<u>TF as % of Total Wages*:</u>	2.92	6
<u>Interest Earned (000):</u>	\$6,498	24
<u>Avg. High Cost Multiple +:</u>	1.88	2
<u>High Cost Multiple +:</u>	1.50	2

Labor Force	(Quarterly)	Past 12 Mos	Rank
<u>IUR (%):</u>	1.8	1.4	34
<u>TUR (%):</u>	3.7	3.1	44
<u>Total Unemp. (000):</u>	24.6	20.2	45
Insured Unemployed (000) ***			
<u>Regular Programs:</u>	10.6	8.5	43
<u>All Programs:</u>	10.6	8.5	43
Reciency Rates (%) ***			
<u>Regular Programs:</u>	43	42	11
<u>All Programs:</u>	43	42	11
<u>Covered Emp. (000)**:</u>	600	594	42
<u>Civ. Labor Force (000):</u>	665	653	43
<u>Subj. Employers (000):</u>	31	31	45

Extended Benefits	(Quarterly)	Past 12 Months
<u>Extended Benefits (000):</u>	\$0	\$0
EB First Payments:	0	0
EB Weeks Claimed:	0	0
EB Exhaustions:	0	0

Loans	Rank
<u>Outstanding Loan Bal (000):</u>	\$0 2
Loan per Cov Employee:	\$0 2
Loan as % of Total Wages*:	0 2

* Based on extrapolated wages for the most recent 12 months.

** Wages and Covered Employment lag the rest of the Data Summary information by six months

*** Regular programs include State UI, UCFE and UCX.

+ Refers to most recent calendar year. Fourth and first quarter issues publish measure based on extrapolated wages. Second and third quarter issues publish measure based on actual wages.

See glossary for data definitions

Note: Blank cells appearing in any section of this report indicates that information is unavailable.

UI Data Summary for Idaho

CYQ: 2008.2

Benefits	(Quarterly)	Past 12 Months	Rank	High Value : Qtr		Low Value : Qtr	
<u>Benefits Paid (000):</u>	\$45,637	\$167,562	36	\$69,637	2008.1	\$1,990	1972.4
<u>Initial Claims:</u>	23,063	109,716	36	47,070	2001.4	8,753	1972.3
<u>First Payments:</u>	10,092	53,957	36	23,010	2003.1	3,784	1971.2
<u>Weeks Claimed:</u>	188,959	767,224	36	353,845	2003.1	63,956	1972.4
<u>Wks Compensated:</u>	175,681	657,667	35	313,570	2002.1	40,048	1972.4
<u>Exhaustions:</u>	5,190	14,014	33	9,096	1983.1	920	1972.4
<u>Exhaustion Rate:</u>		30.9%	40	52.6%	1983.2	22.0%	1979.3
<u>Average Duration:</u>		12.2	48	15.3	1982.4	10.1	1978.4
<u>AWBA:</u>	\$275.29	\$268.04	31	\$275.29	2008.2	\$45.31	1971.3
As % of AWW:	43.3		9				
<u>Avg. Benefits per First Payment:</u>		\$3,105					

Financial Information	Past 12 Months	Rank
<u>State Revenues (000):</u>	\$121,849	39
<u>Total Wages (000)**:</u>	\$5,743,203	43
<u>Total Wages (Taxable Employers)(000)**:</u>	\$4,718,225	40
<u>Taxable Wages (000)**:</u>	\$1,941,792	35
<u>Avg. Weekly Wage**:</u>	\$636.23	48
<u>Avg. Tax Rate on Taxable Wages (%) **:</u>	1.15	47
<u>Avg. Tax Rate on Total Wages (%) **:</u>	0.76	19
<u>Calendar Yr Taxable Wage Base:</u>	\$32,200	2
<u>Trust Fund (TF) Balance (000):</u>		
(Including Loans):	\$135,087	48
<u>TF as % of Total Wages*:</u>	0.75	35
<u>Interest Earned (000):</u>	\$1,758	48
<u>Avg. High Cost Multiple +:</u>	0.47	34
<u>High Cost Multiple +:</u>	0.35	32

Labor Force	(Quarterly)	Past 12 Mos	Rank
<u>IUR (%):</u>	2.3	2.4	17
<u>TUR (%):</u>	3.3	3.0	48
<u>Total Unemp. (000):</u>	24.8	22.4	43
Insured Unemployed (000) ***			
<u>Regular Programs:</u>	15.3	15.5	35
<u>All Programs:</u>	15.3	15.5	35
Reciency Rates (%) ***			
<u>Regular Programs:</u>	62	69	1
<u>All Programs:</u>	62	69	1
<u>Covered Emp. (000)**:</u>	652	648	40
<u>Civ. Labor Force (000):</u>	755	756	40
<u>Subj. Employers (000):</u>	51	51	37

Extended Benefits	(Quarterly)	Past 12 Months
<u>Extended Benefits (000):</u>	\$0	\$0
EB First Payments:	0	0
EB Weeks Claimed:	0	0
EB Exhaustions:	0	0

Loans	Rank
<u>Outstanding Loan Bal (000):</u>	\$0 2
Loan per Cov Employee:	\$0 2
Loan as % of Total Wages*:	0 2

* Based on extrapolated wages for the most recent 12 months.

** Wages and Covered Employment lag the rest of the Data Summary information by six months

*** Regular programs include State UI, UCFE and UCX.

+ Refers to most recent calendar year. Fourth and first quarter issues publish measure based on extrapolated wages. Second and third quarter issues publish measure based on actual wages.

See glossary for data definitions

Note: Blank cells appearing in any section of this report indicates that information is unavailable.

UI Data Summary for **Illinois**

CYQ: 2008.2

Benefits	(Quarterly)	Past 12 Months	Rank	High Value : Qtr		Low Value : Qtr	
Benefits Paid (000):	\$526,129	\$1,997,831	5	\$759,769	2002.1	\$33,425	1973.3
Initial Claims:	174,502	749,206	7	366,762	1982.1	111,476	1973.2
First Payments:	82,016	372,013	7	210,346	1975.1	45,457	1973.4
Weeks Claimed:	1,886,076	7,448,713	6	3,764,106	1983.1	714,895	1973.4
Wks Compensated:	1,694,072	6,480,841	5	3,334,960	1983.1	563,654	1973.4
Exhaustions:	33,846	129,264	7	83,792	1982.4	12,720	1972.4
Exhaustion Rate:		36.7%	22	53.3%	1983.3	26.9%	2000.4
Average Duration:		17.4	5	21.6	1983.4	11.7	1975.1
AWBA:	\$311.70	\$309.41	12	\$324.57	2008.1	\$51.05	1971.3
As % of AWW:	34.2		36				
Avg. Benefits per First Payment:		\$5,370					

Financial Information	Past 12 Months	Rank
State Revenues (000):	\$2,054,440	4
Total Wages (000)**:	\$73,668,313	5
Total Wages (Taxable Employers)(000)**:	\$61,318,412	5
Taxable Wages (000)**:	\$5,599,927	6
Avg. Weekly Wage**:	\$912.44	7
Avg. Tax Rate on Taxable Wages (%) **:	3.74	4
Avg. Tax Rate on Total Wages (%) **:	0.96	9
Calendar Yr Taxable Wage Base:	\$12,000	22
Trust Fund (TF) Balance (000):		
(Including Loans):	\$1,906,219	5
TF as % of Total Wages*:	0.82	31
Interest Earned (000):	\$21,130	6
Avg. High Cost Multiple +:	0.35	39
High Cost Multiple +:	0.30	35

Labor Force	(Quarterly)	Past 12 Mos	Rank
IUR (%):	2.5	2.4	14
TUR (%):	6.2	5.6	7
Total Unemp. (000):	424.5	377.7	5
Insured Unemployed (000) ***			
Regular Programs:	143.9	142.2	6
All Programs:	143.9	142.2	6
Reciency Rates (%) ***			
Regular Programs:	34	38	29
All Programs:	34	38	29
Covered Emp. (000)**:	5,840	5,782	5
Civ. Labor Force (000):	6,813	6,761	5
Subj. Employers (000):	300	299	5

Extended Benefits	(Quarterly)	Past 12 Months
Extended Benefits (000):	\$0	\$0
EB First Payments:	0	0
EB Weeks Claimed:	0	0
EB Exhaustions:	0	0

Loans	Rank
Outstanding Loan Bal (000):	\$0 2
Loan per Cov Employee:	\$0 2
Loan as % of Total Wages*:	0 2

* Based on extrapolated wages for the most recent 12 months.

** Wages and Covered Employment lag the rest of the Data Summary information by six months

*** Regular programs include State UI, UCFE and UCX.

+ Refers to most recent calendar year. Fourth and first quarter issues publish measure based on extrapolated wages. Second and third quarter issues publish measure based on actual wages.

See glossary for data definitions

Note: Blank cells appearing in any section of this report indicates that information is unavailable.

UI Data Summary for Indiana

CYQ: 2008.2

Benefits	(Quarterly)	Past 12 Months	Rank	High Value : Qtr		Low Value : Qtr	
<u>Benefits Paid (000):</u>	\$194,998	\$756,625	16	\$261,983	2008.1	\$8,800	1973.3
<u>Initial Claims:</u>	115,144	476,105	13	239,452	1975.1	42,913	1994.2
<u>First Payments:</u>	43,890	202,913	14	135,044	1975.1	14,237	1976.3
<u>Weeks Claimed:</u>	792,225	3,116,182	14	1,563,934	1975.1	234,695	1973.3
<u>Wks Compensated:</u>	681,605	2,655,828	14	1,367,828	1975.1	199,188	1973.4
<u>Exhaustions:</u>	21,944	78,029	12	37,884	1975.2	4,727	1988.4
<u>Exhaustion Rate:</u>		41.8%	12	44.0%	2003.4	20.6%	1990.3
<u>Average Duration:</u>		13.1	43	16.0	1983.4	8.6	1974.1
<u>AWBA:</u>	\$292.69	\$291.95	25	\$299.65	2008.1	\$40.32	1971.2
As % of AWW:	40.9		15				
<u>Avg. Benefits per First Payment:</u>		\$3,729					

Financial Information	Past 12 Months	Rank
<u>State Revenues (000):</u>	\$555,537	18
<u>Total Wages (000)**:</u>	\$27,810,121	17
<u>Total Wages (Taxable Employers)(000)**:</u>	\$23,059,257	20
<u>Taxable Wages (000)**:</u>	\$1,839,172	25
<u>Avg. Weekly Wage**:</u>	\$716.34	33
<u>Avg. Tax Rate on Taxable Wages (%) **:</u>	2.75	11
<u>Avg. Tax Rate on Total Wages (%) **:</u>	0.61	29
<u>Calendar Yr Taxable Wage Base:</u>	\$7,000	49
<u>Trust Fund (TF) Balance (000):</u>		
(Including Loans):	\$226,272	41
<u>TF as % of Total Wages*:</u>	0.25	51
<u>Interest Earned (000):</u>	\$2,427	42
<u>Avg. High Cost Multiple +:</u>	0.29	44
<u>High Cost Multiple +:</u>	0.20	43

Labor Force	(Quarterly)	Past 12 Mos	Rank
<u>IUR (%):</u>	2.1	2.1	22
<u>TUR (%):</u>	5.2	4.8	20
<u>Total Unemp. (000):</u>	168.4	153.4	14
Insured Unemployed (000) ***			
<u>Regular Programs:</u>	60.6	60.1	14
<u>All Programs:</u>	60.6	60.1	14
Reciency Rates (%) ***			
<u>Regular Programs:</u>	36	39	20
<u>All Programs:</u>	36	39	20
<u>Covered Emp. (000)**:</u>	2,897	2,869	14
<u>Civ. Labor Force (000):</u>	3,237	3,214	15
<u>Subj. Employers (000):</u>	132	131	21

Extended Benefits	(Quarterly)	Past 12 Months
<u>Extended Benefits (000):</u>	\$0	\$0
EB First Payments:	0	0
EB Weeks Claimed:	0	0
EB Exhaustions:	0	0

Loans	Rank
<u>Outstanding Loan Bal (000):</u>	\$0 2
Loan per Cov Employee:	\$0 2
Loan as % of Total Wages*:	0 2

* Based on extrapolated wages for the most recent 12 months.

** Wages and Covered Employment lag the rest of the Data Summary information by six months

*** Regular programs include State UI, UCFE and UCX.

+ Refers to most recent calendar year. Fourth and first quarter issues publish measure based on extrapolated wages. Second and third quarter issues publish measure based on actual wages.

See glossary for data definitions

Note: Blank cells appearing in any section of this report indicates that information is unavailable.

UI Data Summary for Iowa

CYQ: 2008.2

Benefits	(Quarterly)	Past 12 Months	Rank	High Value : Qtr		Low Value : Qtr	
Benefits Paid (000):	\$87,569	\$349,743	28	\$138,548	2008.1	\$4,418	1972.4
Initial Claims:	57,442	213,144	26	91,605	1982.1	15,337	1974.2
First Payments:	20,410	99,066	30	63,848	1982.1	6,856	1974.2
Weeks Claimed:	317,712	1,329,262	31	762,074	1983.1	104,815	1974.3
Wks Compensated:	305,984	1,224,141	29	728,215	1983.1	79,526	1973.4
Exhaustions:	6,623	22,322	30	17,724	1983.1	1,761	1973.4
Exhaustion Rate:		24.4%	47	46.5%	1975.3	13.6%	1979.4
Average Duration:		12.4	47	15.8	1983.2	10.6	1999.2
AWBA:	\$299.78	\$298.65	20	\$306.40	2008.1	\$52.22	1971.3
As % of AWW:	43.9		8				
Avg. Benefits per First Payment:		\$3,530					

Financial Information	Past 12 Months	Rank
State Revenues (000):	\$360,198	25
Total Wages (000)**:	\$14,033,120	30
Total Wages (Taxable Employers)(000)**:	\$11,204,947	32
Taxable Wages (000)**:	\$2,627,184	21
Avg. Weekly Wage**:	\$682.99	40
Avg. Tax Rate on Taxable Wages (%) **:	1.58	33
Avg. Tax Rate on Total Wages (%) **:	0.84	11
Calendar Yr Taxable Wage Base:	\$22,800	10
Trust Fund (TF) Balance (000):		
(Including Loans):	\$713,920	19
TF as % of Total Wages*:	1.69	15
Interest Earned (000):	\$8,413	18
Avg. High Cost Multiple +:	0.88	24
High Cost Multiple +:	0.68	20

Labor Force	(Quarterly)	Past 12 Mos	Rank
IUR (%):	1.7	1.7	38
TUR (%):	3.7	3.8	45
Total Unemp. (000):	61.2	62.8	35
Insured Unemployed (000) ***			
Regular Programs:	24.4	25.6	31
All Programs:	24.4	25.6	31
Reciency Rates (%) ***			
Regular Programs:	40	41	15
All Programs:	40	41	15
Covered Emp. (000)**:	1,483	1,467	30
Civ. Labor Force (000):	1,677	1,668	30
Subj. Employers (000):	72	72	30

Extended Benefits	(Quarterly)	Past 12 Months
Extended Benefits (000):	\$0	\$0
EB First Payments:	0	0
EB Weeks Claimed:	0	0
EB Exhaustions:	0	0

Loans	Rank
Outstanding Loan Bal (000):	\$0 2
Loan per Cov Employee:	\$0 2
Loan as % of Total Wages*:	0 2

* Based on extrapolated wages for the most recent 12 months.

** Wages and Covered Employment lag the rest of the Data Summary information by six months

*** Regular programs include State UI, UCFE and UCX.

+ Refers to most recent calendar year. Fourth and first quarter issues publish measure based on extrapolated wages. Second and third quarter issues publish measure based on actual wages.

See glossary for data definitions

Note: Blank cells appearing in any section of this report indicates that information is unavailable.

UI Data Summary for **Kansas**

CYQ: 2008.2

Benefits	(Quarterly)	Past 12 Months	Rank	High Value : Qtr		Low Value : Qtr	
Benefits Paid (000):	\$68,090	\$262,854	31	\$105,996	2003.1	\$3,919	1973.3
Initial Claims:	32,292	137,550	33	58,971	1983.1	12,849	1973.2
First Payments:	14,323	62,893	34	32,068	1982.1	6,024	1973.2
Weeks Claimed:	244,192	966,337	34	507,786	1983.1	94,003	1973.3
Wks Compensated:	220,268	861,019	33	473,467	1982.3	74,015	1973.3
Exhaustions:	4,790	18,080	36	16,294	1983.1	1,499	1973.4
Exhaustion Rate:		30.9%	39	48.1%	1983.3	20.6%	1980.1
Average Duration:		13.7	37	18.4	1983.3	10.7	1974.1
AWBA:	\$313.82	\$309.80	11	\$317.42	2008.1	\$50.55	1971.3
As % of AWW:	44.5		4				
Avg. Benefits per First Payment:		\$4,179					

Financial Information	Past 12 Months	Rank
State Revenues (000):	\$222,619	31
Total Wages (000)**:	\$12,978,403	32
Total Wages (Taxable Employers)(000)**:	\$11,914,273	30
Taxable Wages (000)**:	\$2,378,734	29
Avg. Weekly Wage**:	\$705.71	34
Avg. Tax Rate on Taxable Wages (%) **:	1.45	37
Avg. Tax Rate on Total Wages (%) **:	0.48	34
Calendar Yr Taxable Wage Base:	\$8,000	41
Trust Fund (TF) Balance (000):		
(Including Loans):	\$662,664	22
TF as % of Total Wages*:	1.44	20
Interest Earned (000):	\$7,687	20
Avg. High Cost Multiple +:	0.97	21
High Cost Multiple +:	0.72	16

Labor Force	(Quarterly)	Past 12 Mos	Rank
IUR (%):	1.4	1.4	42
TUR (%):	4.1	4.1	36
Total Unemp. (000):	62.0	60.8	33
Insured Unemployed (000) ***			
Regular Programs:	18.4	18.4	34
All Programs:	18.4	18.4	34
Reciency Rates (%) ***			
Regular Programs:	30	30	36
All Programs:	30	30	36
Covered Emp. (000)**:	1,349	1,332	31
Civ. Labor Force (000):	1,494	1,483	31
Subj. Employers (000):	72	71	31

Extended Benefits	(Quarterly)	Past 12 Months
Extended Benefits (000):	\$0	\$0
EB First Payments:	0	0
EB Weeks Claimed:	0	0
EB Exhaustions:	0	0

Loans	Rank
Outstanding Loan Bal (000):	\$0 2
Loan per Cov Employee:	\$0 2
Loan as % of Total Wages*:	0 2

* Based on extrapolated wages for the most recent 12 months.

** Wages and Covered Employment lag the rest of the Data Summary information by six months

*** Regular programs include State UI, UCFE and UCX.

+ Refers to most recent calendar year. Fourth and first quarter issues publish measure based on extrapolated wages. Second and third quarter issues publish measure based on actual wages.

See glossary for data definitions

Note: Blank cells appearing in any section of this report indicates that information is unavailable.

UI Data Summary for **Kentucky**

CYQ: 2008.2

Benefits

	(Quarterly)	Past 12 Months	Rank	High Value : Qtr		Low Value : Qtr	
Benefits Paid (000):	\$118,196	\$454,639	22	\$148,652	2003.1	\$7,436	1972.3
Initial Claims:	87,519	334,349	18	170,954	1994.1	25,015	1973.2
First Payments:	22,799	117,631	28	110,332	1994.1	11,096	1972.2
Weeks Claimed:	421,700	1,678,058	27	1,029,444	1983.1	169,408	1973.3
Wks Compensated:	410,422	1,619,483	25	974,059	1983.1	147,330	1973.3
Exhaustions:	6,486	25,386	31	20,572	1983.1	2,882	1972.4
Exhaustion Rate:		22.1%	49	39.4%	1983.1	12.8%	1995.2
Average Duration:		13.8	34	18.6	1983.4	8.9	1994.1
AWBA:	\$297.54	\$291.49	21	\$297.54	2008.2	\$46.26	1971.2
As % of AWW:	42.9		10				
Avg. Benefits per First Payment:		\$3,865					

Financial Information

	Past 12 Months	Rank
State Revenues (000):	\$390,556	22
Total Wages (000)**:	\$16,858,418	28
Total Wages (Taxable Employers)(000)**:	\$13,536,552	28
Taxable Wages (000)**:	\$1,321,711	31
Avg. Weekly Wage**:	\$694.36	38
Avg. Tax Rate on Taxable Wages (%) **:	2.64	13
Avg. Tax Rate on Total Wages (%) **:	0.68	22
Calendar Yr Taxable Wage Base:	\$8,000	41
Trust Fund (TF) Balance (000):		
(Including Loans):	\$237,383	40
TF as % of Total Wages*:	0.46	44
Interest Earned (000):	\$2,552	41
Avg. High Cost Multiple +:	0.21	49
High Cost Multiple +:	0.16	46

Labor Force

	(Quarterly)	Past 12 Mos	Rank
IUR (%):	1.9	1.9	29
TUR (%):	6.1	5.6	10
Total Unemp. (000):	124.5	114.1	24
Insured Unemployed (000) ***			
Regular Programs:	34.1	34.1	27
All Programs:	34.1	34.1	27
Reciency Rates (%) ***			
Regular Programs:	27	30	41
All Programs:	27	30	41
Covered Emp. (000)**:	1,789	1,764	26
Civ. Labor Force (000):	2,056	2,043	25
Subj. Employers (000):	87	86	28

Extended Benefits

	(Quarterly)	Past 12 Months
Extended Benefits (000):	\$0	\$0
EB First Payments:	0	0
EB Weeks Claimed:	0	0
EB Exhaustions:	0	0

Loans

		Rank
Outstanding Loan Bal (000):	\$0	2
Loan per Cov Employee:	\$0	2
Loan as % of Total Wages*:	0	2

* Based on extrapolated wages for the most recent 12 months.

** Wages and Covered Employment lag the rest of the Data Summary information by six months

*** Regular programs include State UI, UCFE and UCX.

+ Refers to most recent calendar year. Fourth and first quarter issues publish measure based on extrapolated wages. Second and third quarter issues publish measure based on actual wages.

See glossary for data definitions

Note: Blank cells appearing in any section of this report indicates that information is unavailable.

UI Data Summary for Louisiana

CYQ: 2008.2

Benefits	(Quarterly)	Past 12 Months	Rank	High Value : Qtr		Low Value : Qtr	
<u>Benefits Paid (000):</u>	\$46,292	\$178,859	35	\$472,654	2005.4	\$11,866	1972.3
<u>Initial Claims:</u>	39,272	138,919	32	228,256	2005.3	30,169	2007.3
<u>First Payments:</u>	15,658	61,475	33	144,081	2005.3	12,250	2007.2
<u>Weeks Claimed:</u>	275,365	1,078,703	32	2,775,877	2005.4	243,812	2007.4
<u>Wks Compensated:</u>	222,286	870,641	32	2,477,795	2005.4	195,524	2007.2
<u>Exhaustions:</u>	5,451	21,794	32	70,297	2006.1	4,215	1998.4
<u>Exhaustion Rate:</u>		39.6%	17	63.1%	1987.1	19.5%	2007.1
<u>Average Duration:</u>		14.2	29	27.1	2006.4	7.9	2005.3
<u>AWBA:</u>	\$210.36	\$207.57	49	\$210.59	2008.1	\$45.89	1971.1
As % of AWW:	28.9		45				
<u>Avg. Benefits per First Payment:</u>		\$2,909					

Financial Information	Past 12 Months	Rank
<u>State Revenues (000):</u>	\$173,074	35
<u>Total Wages (000)**:</u>	\$18,804,109	25
<u>Total Wages (Taxable Employers)(000)**:</u>	\$15,341,285	24
<u>Taxable Wages (000)**:</u>	\$1,459,602	32
<u>Avg. Weekly Wage**:</u>	\$728.00	32
<u>Avg. Tax Rate on Taxable Wages (%) **:</u>	1.42	39
<u>Avg. Tax Rate on Total Wages (%) **:</u>	0.33	48
<u>Calendar Yr Taxable Wage Base:</u>	\$7,000	49
<u>Trust Fund (TF) Balance (000):</u>		
(Including Loans):	\$1,495,958	8
<u>TF as % of Total Wages*:</u>	2.56	9
<u>Interest Earned (000):</u>	\$17,812	8
<u>Avg. High Cost Multiple +:</u>	0.94	22
<u>High Cost Multiple +:</u>	0.83	10

Labor Force	(Quarterly)	Past 12 Mos	Rank
<u>IUR (%):</u>	1.2	1.2	43
<u>TUR (%):</u>	4.0	3.9	37
<u>Total Unemp. (000):</u>	80.8	78.9	31
Insured Unemployed (000) ***			
<u>Regular Programs:</u>	21.9	21.8	33
<u>All Programs:</u>	21.9	21.8	33
Reciency Rates (%) ***			
<u>Regular Programs:</u>	27	28	42
<u>All Programs:</u>	27	28	42
<u>Covered Emp. (000)**:</u>	1,866	1,837	25
<u>Civ. Labor Force (000):</u>	2,023	2,008	26
<u>Subj. Employers (000):</u>	103	102	24

Extended Benefits	(Quarterly)	Past 12 Months
<u>Extended Benefits (000):</u>	\$1	\$6
EB First Payments:	1	12
EB Weeks Claimed:	3	19
EB Exhaustions:	0	0

Loans	Rank
<u>Outstanding Loan Bal (000):</u>	\$0 2
Loan per Cov Employee:	\$0 2
Loan as % of Total Wages*:	0 2

* Based on extrapolated wages for the most recent 12 months.

** Wages and Covered Employment lag the rest of the Data Summary information by six months

*** Regular programs include State UI, UCFE and UCX.

+ Refers to most recent calendar year. Fourth and first quarter issues publish measure based on extrapolated wages. Second and third quarter issues publish measure based on actual wages.

See glossary for data definitions

Note: Blank cells appearing in any section of this report indicates that information is unavailable.

UI Data Summary for Maine

CYQ: 2008.2

Benefits	(Quarterly)	Past 12 Months	Rank	High Value : Qtr		Low Value : Qtr	
<u>Benefits Paid (000):</u>	\$34,031	\$122,032	42	\$59,871	1991.1	\$4,084	1973.4
<u>Initial Claims:</u>	15,285	67,368	43	55,565	1991.1	10,710	2007.3
<u>First Payments:</u>	8,045	33,949	42	35,621	1975.1	4,372	2000.3
<u>Weeks Claimed:</u>	151,211	559,924	41	443,727	1991.1	83,258	2000.3
<u>Wks Compensated:</u>	132,566	483,079	41	385,026	1991.1	65,703	2000.3
<u>Exhaustions:</u>	3,515	10,495	40	10,511	1975.2	1,314	1988.4
<u>Exhaustion Rate:</u>		32.3%	36	64.5%	1983.3	19.9%	1988.3
<u>Average Duration:</u>		14.2	27	18.7	1983.3	10.1	1980.1
<u>AWBA:</u>	\$263.53	\$259.24	39	\$263.53	2008.2	\$46.43	1971.3
As % of AWW:	39.8		20				
<u>Avg. Benefits per First Payment:</u>		\$3,595					

Financial Information	Past 12 Months	Rank
<u>State Revenues (000):</u>	\$103,041	43
<u>Total Wages (000)**:</u>	\$5,370,462	44
<u>Total Wages (Taxable Employers)(000)**:</u>	\$4,034,462	45
<u>Taxable Wages (000)**:</u>	\$556,219	42
<u>Avg. Weekly Wage**:</u>	\$662.77	45
<u>Avg. Tax Rate on Taxable Wages (%) **:</u>	1.82	28
<u>Avg. Tax Rate on Total Wages (%) **:</u>	0.67	23
<u>Calendar Yr Taxable Wage Base:</u>	\$12,000	22
<u>Trust Fund (TF) Balance (000):</u>		
(Including Loans):	\$463,588	30
<u>TF as % of Total Wages*:</u>	3.01	5
<u>Interest Earned (000):</u>	\$5,580	29
<u>Avg. High Cost Multiple +:</u>	1.64	4
<u>High Cost Multiple +:</u>	1.12	7

Labor Force	(Quarterly)	Past 12 Mos	Rank
<u>IUR (%):</u>	2.0	1.9	24
<u>TUR (%):</u>	5.1	5.0	22
<u>Total Unemp. (000):</u>	36.2	35.0	40
<u>Insured Unemployed (000) ***</u>			
<u>Regular Programs:</u>	11.8	11.0	41
<u>All Programs:</u>	11.8	11.0	41
<u>Reciency Rates (%) ***</u>			
<u>Regular Programs:</u>	33	31	30
<u>All Programs:</u>	33	31	30
<u>Covered Emp. (000)**:</u>	595	588	43
<u>Civ. Labor Force (000):</u>	709	707	42
<u>Subj. Employers (000):</u>	43	43	40

Extended Benefits	(Quarterly)	Past 12 Months
<u>Extended Benefits (000):</u>	\$0	\$0
EB First Payments:	0	0
EB Weeks Claimed:	0	0
EB Exhaustions:	0	0

Loans	Rank
<u>Outstanding Loan Bal (000):</u>	\$0 2
Loan per Cov Employee:	\$0 2
Loan as % of Total Wages*:	0 2

* Based on extrapolated wages for the most recent 12 months.

** Wages and Covered Employment lag the rest of the Data Summary information by six months

*** Regular programs include State UI, UCFE and UCX.

+ Refers to most recent calendar year. Fourth and first quarter issues publish measure based on extrapolated wages. Second and third quarter issues publish measure based on actual wages.

See glossary for data definitions

Note: Blank cells appearing in any section of this report indicates that information is unavailable.

UI Data Summary for Maryland

CYQ: 2008.2

Benefits	(Quarterly)	Past 12 Months	Rank	High Value : Qtr		Low Value : Qtr	
				Value	Year	Value	Year
Benefits Paid (000):	\$138,747	\$506,960	19	\$154,086	2008.1	\$12,029	1973.3
Initial Claims:	57,519	228,366	25	118,620	1975.1	38,277	1973.2
First Payments:	26,820	114,878	25	70,645	1975.1	14,868	1973.2
Weeks Claimed:	530,679	2,007,993	24	1,021,835	1992.1	269,003	1973.4
Wks Compensated:	460,862	1,748,786	23	850,921	1982.1	202,353	1973.4
Exhaustions:	10,300	35,502	26	19,819	1975.3	3,394	1973.4
Exhaustion Rate:		33.6%	32	38.7%	1975.3	18.4%	1979.3
Average Duration:		15.2	16	17.9	1992.1	11.4	1974.4
AWBA:	\$305.89	\$294.10	17	\$305.89	2008.2	\$52.82	1971.2
As % of AWW:	34.2		35				
Avg. Benefits per First Payment:		\$4,413					

Financial Information	Past 12 Months	Rank
State Revenues (000):	\$390,435	23
Total Wages (000)**:	\$30,320,098	16
Total Wages (Taxable Employers)(000)**:	\$23,865,333	17
Taxable Wages (000)**:	\$1,951,747	26
Avg. Weekly Wage**:	\$894.60	9
Avg. Tax Rate on Taxable Wages (%) **:	1.80	29
Avg. Tax Rate on Total Wages (%) **:	0.40	42
Calendar Yr Taxable Wage Base:	\$8,500	35
Trust Fund (TF) Balance (000):		
(Including Loans):	\$986,316	12
TF as % of Total Wages*:	1.09	24
Interest Earned (000):	\$11,837	12
Avg. High Cost Multiple +:	0.79	27
High Cost Multiple +:	0.53	23

Labor Force	(Quarterly)	Past 12 Mos	Rank
IUR (%):	1.8	1.7	33
TUR (%):	3.8	3.7	42
Total Unemp. (000):	115.7	109.9	25
Insured Unemployed (000) ***			
Regular Programs:	44.2	41.9	22
All Programs:	44.2	41.9	22
Reciency Rates (%) ***			
Regular Programs:	38	38	18
All Programs:	38	38	18
Covered Emp. (000)**:	2,447	2,422	21
Civ. Labor Force (000):	3,013	2,993	20
Subj. Employers (000):	144	143	16

Extended Benefits	(Quarterly)	Past 12 Months
Extended Benefits (000):	\$0	\$0
EB First Payments:	0	0
EB Weeks Claimed:	0	0
EB Exhaustions:	0	0

Loans	Rank
Outstanding Loan Bal (000):	\$0 2
Loan per Cov Employee:	\$0 2
Loan as % of Total Wages*:	0 2

* Based on extrapolated wages for the most recent 12 months.

** Wages and Covered Employment lag the rest of the Data Summary information by six months

*** Regular programs include State UI, UCFE and UCX.

+ Refers to most recent calendar year. Fourth and first quarter issues publish measure based on extrapolated wages. Second and third quarter issues publish measure based on actual wages.

See glossary for data definitions

Note: Blank cells appearing in any section of this report indicates that information is unavailable.

UI Data Summary for **Massachusetts**

CYQ: 2008.2

Benefits	(Quarterly)	Past 12 Months	Rank	High Value : Qtr		Low Value : Qtr	
Benefits Paid (000):	\$381,758	\$1,532,169	8	\$634,981	2002.1	\$46,838	1972.4
Initial Claims:	105,651	417,397	15	250,766	1974.4	65,733	1997.3
First Payments:	48,816	227,300	13	157,733	1975.1	30,738	1987.2
Weeks Claimed:	1,117,113	4,584,234	11	2,382,332	1975.1	556,699	1987.4
Wks Compensated:	998,696	4,075,562	10	2,159,531	1975.1	518,866	1987.4
Exhaustions:	21,687	78,961	13	48,214	1975.2	10,557	1984.4
Exhaustion Rate:		36.1%	24	47.3%	2003.2	24.2%	1985.3
Average Duration:		17.9	4	20.4	1992.1	14.2	1985.2
AWBA:	\$391.91	\$385.10	2	\$391.91	2008.2	\$56.86	1971.2
As % of AWW:	37.0		28				
Avg. Benefits per First Payment:		\$6,741					

Financial Information	Past 12 Months	Rank
State Revenues (000):	\$1,537,681	7
Total Wages (000)**:	\$47,380,109	10
Total Wages (Taxable Employers)(000)**:	\$38,795,413	9
Taxable Wages (000)**:	\$5,102,086	11
Avg. Weekly Wage**:	\$1,059.10	4
Avg. Tax Rate on Taxable Wages (%) **:	3.56	5
Avg. Tax Rate on Total Wages (%) **:	1.04	8
Calendar Yr Taxable Wage Base:	\$14,000	18
Trust Fund (TF) Balance (000):		
(Including Loans):	\$1,426,211	9
TF as % of Total Wages*:	0.97	27
Interest Earned (000):	\$15,678	9
Avg. High Cost Multiple +:	0.50	32
High Cost Multiple +:	0.28	37

Labor Force	(Quarterly)	Past 12 Mos	Rank
IUR (%):	2.6	2.7	11
TUR (%):	4.6	4.5	31
Total Unemp. (000):	158.1	153.3	16
Insured Unemployed (000) ***			
Regular Programs:	84.4	86.9	11
All Programs:	84.4	86.9	11
Reciency Rates (%) ***			
Regular Programs:	53	57	3
All Programs:	53	57	3
Covered Emp. (000)**:	3,225	3,185	13
Civ. Labor Force (000):	3,403	3,405	14
Subj. Employers (000):	188	186	14

Extended Benefits	(Quarterly)	Past 12 Months
Extended Benefits (000):	\$0	\$0
EB First Payments:	0	0
EB Weeks Claimed:	0	0
EB Exhaustions:	0	0

Loans	Rank
Outstanding Loan Bal (000):	\$0 2
Loan per Cov Employee:	\$0 2
Loan as % of Total Wages*:	0 2

* Based on extrapolated wages for the most recent 12 months.

** Wages and Covered Employment lag the rest of the Data Summary information by six months

*** Regular programs include State UI, UCFE and UCX.

+ Refers to most recent calendar year. Fourth and first quarter issues publish measure based on extrapolated wages. Second and third quarter issues publish measure based on actual wages.

See glossary for data definitions

Note: Blank cells appearing in any section of this report indicates that information is unavailable.

UI Data Summary for Michigan

CYQ: 2008.2

Benefits	(Quarterly)	Past 12 Months	Rank	High Value : Qtr		Low Value : Qtr	
Benefits Paid (000):	\$515,241	\$1,918,567	6	\$667,851	2004.1	\$37,946	1973.3
Initial Claims:	206,599	952,025	5	631,661	1980.2	107,765	1999.2
First Payments:	83,983	454,971	6	302,813	1975.1	45,089	1973.2
Weeks Claimed:	1,910,269	7,443,557	5	4,570,735	1975.1	850,960	2000.2
Wks Compensated:	1,767,835	6,671,133	4	4,105,400	1975.1	659,905	1973.4
Exhaustions:	44,564	154,708	3	97,918	1975.2	17,145	2000.3
Exhaustion Rate:		35.5%	28	46.6%	1981.1	18.4%	2000.4
Average Duration:		14.7	24	18.1	1980.4	10.1	2001.1
AWBA:	\$301.04	\$296.35	19	\$301.04	2008.2	\$57.21	1971.4
As % of AWW:	36.3		30				
Avg. Benefits per First Payment:		\$4,217					

Financial Information	Past 12 Months	Rank
State Revenues (000):	\$1,604,913	6
Total Wages (000)**:	\$46,844,148	9
Total Wages (Taxable Employers)(000)**:	\$37,357,154	10
Taxable Wages (000)**:	\$2,982,629	14
Avg. Weekly Wage**:	\$829.81	16
Avg. Tax Rate on Taxable Wages (%) **:	4.73	2
Avg. Tax Rate on Total Wages (%) **:	1.10	5
Calendar Yr Taxable Wage Base:	\$9,000	31
Trust Fund (TF) Balance (000):		
(Including Loans):	\$30,931	51
TF as % of Total Wages*:	0.02	53
Interest Earned (000):	\$130	53
Avg. High Cost Multiple +:	N.A.	53
High Cost Multiple +:	N.A.	53

Labor Force	(Quarterly)	Past 12 Mos	Rank
IUR (%):	3.6	3.5	3
TUR (%):	7.9	7.5	2
Total Unemp. (000):	393.9	374.7	6
Insured Unemployed (000) ***			
Regular Programs:	148.5	144.4	5
All Programs:	148.5	144.4	5
Reciency Rates (%) ***			
Regular Programs:	38	39	19
All Programs:	38	39	19
Covered Emp. (000)**:	4,150	4,125	8
Civ. Labor Force (000):	4,993	4,999	8
Subj. Employers (000):	227	225	9

Extended Benefits	(Quarterly)	Past 12 Months
Extended Benefits (000):	\$0	\$0
EB First Payments:	0	0
EB Weeks Claimed:	0	0
EB Exhaustions:	0	0

Loans	Rank
Outstanding Loan Bal (000):	\$177,000 1
Loan per Cov Employee:	\$43 1
Loan as % of Total Wages*:	0.1245 1

* Based on extrapolated wages for the most recent 12 months.

** Wages and Covered Employment lag the rest of the Data Summary information by six months

*** Regular programs include State UI, UCFE and UCX.

+ Refers to most recent calendar year. Fourth and first quarter issues publish measure based on extrapolated wages. Second and third quarter issues publish measure based on actual wages.

See glossary for data definitions

Note: Blank cells appearing in any section of this report indicates that information is unavailable.

UI Data Summary for **Minnesota**

CYQ: 2008.2

Benefits	(Quarterly)	Past 12 Months	Rank	High Value : Qtr		Low Value : Qtr	
Benefits Paid (000):	\$208,160	\$796,301	14	\$297,915	2002.1	\$10,434	1971.3
Initial Claims:	60,117	272,153	24	111,066	1982.4	30,305	1973.2
First Payments:	27,358	140,365	24	68,591	1975.1	14,570	1973.3
Weeks Claimed:	690,081	2,810,783	17	1,087,887	1983.1	257,773	1973.3
Wks Compensated:	615,879	2,389,784	16	1,008,063	1983.1	199,220	1973.3
Exhaustions:	16,022	50,966	15	29,103	1983.1	4,658	1978.3
Exhaustion Rate:		35.9%	26	51.9%	1975.3	22.5%	2000.4
Average Duration:		17.0	7	18.2	1983.3	13.0	1980.1
AWBA:	\$344.82	\$341.50	6	\$348.47	2007.1	\$48.42	1971.3
As % of AWW:	40.6		16				
Avg. Benefits per First Payment:		\$5,673					

Financial Information	Past 12 Months	Rank
State Revenues (000):	\$841,255	13
Total Wages (000)**:	\$30,667,254	15
Total Wages (Taxable Employers)(000)**:	\$24,355,507	15
Taxable Wages (000)**:	\$4,922,331	9
Avg. Weekly Wage**:	\$849.50	14
Avg. Tax Rate on Taxable Wages (%) **:	1.68	31
Avg. Tax Rate on Total Wages (%) **:	0.77	16
Calendar Yr Taxable Wage Base:	\$25,000	8
Trust Fund (TF) Balance (000):		
(Including Loans):	\$490,776	28
TF as % of Total Wages*:	0.51	40
Interest Earned (000):	\$5,624	28
Avg. High Cost Multiple +:	0.38	38
High Cost Multiple +:	0.30	35

Labor Force	(Quarterly)	Past 12 Mos	Rank
IUR (%):	2.0	2.0	25
TUR (%):	5.1	4.8	24
Total Unemp. (000):	149.7	139.6	19
Insured Unemployed (000) ***			
Regular Programs:	52.8	53.9	17
All Programs:	52.8	53.9	17
Reciency Rates (%) ***			
Regular Programs:	35	39	25
All Programs:	35	39	25
Covered Emp. (000)**:	2,683	2,655	19
Civ. Labor Force (000):	2,949	2,934	21
Subj. Employers (000):	137	136	18

Extended Benefits	(Quarterly)	Past 12 Months
Extended Benefits (000):	\$0	\$0
EB First Payments:	0	0
EB Weeks Claimed:	0	0
EB Exhaustions:	0	0

Loans	Rank
Outstanding Loan Bal (000):	\$0 2
Loan per Cov Employee:	\$0 2
Loan as % of Total Wages*:	0 2

* Based on extrapolated wages for the most recent 12 months.

** Wages and Covered Employment lag the rest of the Data Summary information by six months

*** Regular programs include State UI, UCFE and UCX.

+ Refers to most recent calendar year. Fourth and first quarter issues publish measure based on extrapolated wages. Second and third quarter issues publish measure based on actual wages.

See glossary for data definitions

Note: Blank cells appearing in any section of this report indicates that information is unavailable.

UI Data Summary for **Mississippi**

CYQ: 2008.2

Benefits	(Quarterly)	Past 12 Months	Rank	High Value : Qtr		Low Value : Qtr	
Benefits Paid (000):	\$36,775	\$141,541	40	\$99,628	2005.4	\$1,738	1972.4
Initial Claims:	40,983	142,945	31	111,429	1982.1	10,210	1972.3
First Payments:	16,635	58,977	32	46,604	1982.1	3,605	1972.3
Weeks Claimed:	270,224	1,036,576	33	687,309	1983.1	64,694	1972.4
Wks Compensated:	211,358	819,930	34	545,032	1983.1	43,771	1972.4
Exhaustions:	4,339	17,947	37	13,945	2006.1	903	1973.4
Exhaustion Rate:		33.1%	33	37.6%	1983.3	19.3%	1974.3
Average Duration:		13.9	32	16.9	2006.4	8.5	1974.4
AWBA:	\$178.98	\$177.73	52	\$202.61	2005.4	\$31.97	1974.1
As % of AWW:	29.4		44				
Avg. Benefits per First Payment:		\$2,400					

Financial Information	Past 12 Months	Rank
State Revenues (000):	\$107,322	42
Total Wages (000)**:	\$9,363,560	35
Total Wages (Taxable Employers)(000)**:	\$7,494,217	35
Taxable Wages (000)**:	\$776,953	38
Avg. Weekly Wage**:	\$609.89	50
Avg. Tax Rate on Taxable Wages (%) **:	1.36	43
Avg. Tax Rate on Total Wages (%) **:	0.36	45
Calendar Yr Taxable Wage Base:	\$7,000	49
Trust Fund (TF) Balance (000):		
(Including Loans):	\$739,738	18
TF as % of Total Wages*:	2.59	8
Interest Earned (000):	\$8,816	17
Avg. High Cost Multiple +:	1.70	3
High Cost Multiple +:	1.32	4

Labor Force	(Quarterly)	Past 12 Mos	Rank
IUR (%):	2.0	1.9	26
TUR (%):	6.8	6.3	5
Total Unemp. (000):	91.0	84.0	29
Insured Unemployed (000) ***			
Regular Programs:	21.9	21.2	32
All Programs:	21.9	21.2	32
Reciency Rates (%) ***			
Regular Programs:	24	25	47
All Programs:	24	25	47
Covered Emp. (000)**:	1,120	1,109	35
Civ. Labor Force (000):	1,340	1,326	36
Subj. Employers (000):	57	56	36

Extended Benefits	(Quarterly)	Past 12 Months
Extended Benefits (000):	\$0	\$0
EB First Payments:	0	0
EB Weeks Claimed:	0	0
EB Exhaustions:	0	0

Loans	Rank
Outstanding Loan Bal (000):	\$0 2
Loan per Cov Employee:	\$0 2
Loan as % of Total Wages*:	0 2

* Based on extrapolated wages for the most recent 12 months.

** Wages and Covered Employment lag the rest of the Data Summary information by six months

*** Regular programs include State UI, UCFE and UCX.

+ Refers to most recent calendar year. Fourth and first quarter issues publish measure based on extrapolated wages. Second and third quarter issues publish measure based on actual wages.

See glossary for data definitions

Note: Blank cells appearing in any section of this report indicates that information is unavailable.

UI Data Summary for **Missouri**

CYQ: 2008.2

Benefits	(Quarterly)	Past 12 Months	Rank	High Value : Qtr		Low Value : Qtr	
Benefits Paid (000):	\$123,221	\$470,379	20	\$174,057	2002.1	\$13,289	1973.3
Initial Claims:	93,225	388,282	17	230,473	1975.1	61,852	1972.2
First Payments:	32,050	145,660	19	102,722	1975.1	21,081	1972.2
Weeks Claimed:	627,735	2,531,274	18	1,390,771	1975.1	368,393	1973.3
Wks Compensated:	521,597	2,069,981	19	1,168,718	1975.1	267,636	1973.3
Exhaustions:	12,108	43,450	19	30,085	1975.3	5,746	1973.4
Exhaustion Rate:		31.2%	38	43.2%	2004.2	22.6%	2000.4
Average Duration:		14.2	28	16.6	2004.1	10.4	1979.3
AWBA:	\$242.98	\$233.56	41	\$242.98	2008.2	\$49.06	1971.3
As % of AWW:	33.0		38				
Avg. Benefits per First Payment:		\$3,229					

Financial Information	Past 12 Months	Rank
State Revenues (000):	\$595,893	16
Total Wages (000)**:	\$27,099,861	21
Total Wages (Taxable Employers)(000)**:	\$22,018,883	21
Taxable Wages (000)**:	\$2,449,288	18
Avg. Weekly Wage**:	\$735.73	30
Avg. Tax Rate on Taxable Wages (%) **:	2.21	18
Avg. Tax Rate on Total Wages (%) **:	0.67	25
Calendar Yr Taxable Wage Base:	\$12,000	22
Trust Fund (TF) Balance (000):		
(Including Loans):	\$214,247	43
TF as % of Total Wages*:	0.25	50
Interest Earned (000):	\$1,899	45
Avg. High Cost Multiple +:	0.12	51
High Cost Multiple +:	0.07	51

Labor Force	(Quarterly)	Past 12 Mos	Rank
IUR (%):	1.9	1.9	31
TUR (%):	5.5	5.5	15
Total Unemp. (000):	168.3	165.4	15
Insured Unemployed (000) ***			
Regular Programs:	49.7	50.3	18
All Programs:	49.7	50.3	18
Reciency Rates (%) ***			
Regular Programs:	30	30	37
All Programs:	30	30	37
Covered Emp. (000)**:	2,693	2,665	18
Civ. Labor Force (000):	3,038	3,029	19
Subj. Employers (000):	139	140	17

Extended Benefits	(Quarterly)	Past 12 Months
Extended Benefits (000):	\$0	\$0
EB First Payments:	0	0
EB Weeks Claimed:	0	0
EB Exhaustions:	0	0

Loans	Rank
Outstanding Loan Bal (000):	\$0 2
Loan per Cov Employee:	\$0 2
Loan as % of Total Wages*:	0 2

* Based on extrapolated wages for the most recent 12 months.

** Wages and Covered Employment lag the rest of the Data Summary information by six months

*** Regular programs include State UI, UCFE and UCX.

+ Refers to most recent calendar year. Fourth and first quarter issues publish measure based on extrapolated wages. Second and third quarter issues publish measure based on actual wages.

See glossary for data definitions

Note: Blank cells appearing in any section of this report indicates that information is unavailable.

UI Data Summary for **Montana**

CYQ: 2008.2

Benefits

	(Quarterly)	Past 12 Months	Rank	High Value : Qtr		Low Value : Qtr	
Benefits Paid (000):	\$21,280	\$81,156	49	\$33,652	2008.1	\$1,267	1971.3
Initial Claims:	11,633	51,470	48	23,928	1982.4	7,063	2006.3
First Payments:	4,868	23,321	48	14,506	1982.1	2,169	1971.3
Weeks Claimed:	99,397	410,894	48	218,479	1983.1	47,952	1973.3
Wks Compensated:	90,395	350,320	48	184,305	1983.1	31,660	1971.3
Exhaustions:	2,488	7,260	45	5,570	1983.1	1,032	1971.4
Exhaustion Rate:		34.7%	30	46.0%	1983.3	25.2%	1978.3
Average Duration:		15.0	18	16.3	2004.2	12.2	1979.1
AWBA:	\$265.83	\$248.17	38	\$265.83	2008.2	\$37.87	1971.2
As % of AWW:	44.0		7				
Avg. Benefits per First Payment:		\$3,480					

Financial Information

	Past 12 Months	Rank
State Revenues (000):	\$87,111	46
Total Wages (000)**:	\$3,584,763	47
Total Wages (Taxable Employers)(000)**:	\$3,084,962	47
Taxable Wages (000)**:	\$1,240,263	39
Avg. Weekly Wage**:	\$604.40	51
Avg. Tax Rate on Taxable Wages (%) **:	1.20	45
Avg. Tax Rate on Total Wages (%) **:	0.78	15
Calendar Yr Taxable Wage Base:	\$23,800	9
Trust Fund (TF) Balance (000):		
(Including Loans):	\$274,326	37
TF as % of Total Wages*:	2.32	11
Interest Earned (000):	\$3,252	37
Avg. High Cost Multiple +:	1.45	9
High Cost Multiple +:	0.82	11

Labor Force

	(Quarterly)	Past 12 Mos	Rank
IUR (%):	1.9	1.9	30
TUR (%):	3.9	3.5	39
Total Unemp. (000):	19.8	17.5	47
Insured Unemployed (000) ***			
Regular Programs:	8.1	8.5	47
All Programs:	8.1	8.5	47
Reciency Rates (%) ***			
Regular Programs:	41	48	14
All Programs:	41	48	14
Covered Emp. (000)**:	428	423	46
Civ. Labor Force (000):	507	503	45
Subj. Employers (000):	38	38	42

Extended Benefits

	(Quarterly)	Past 12 Months
Extended Benefits (000):	\$0	\$0
EB First Payments:	0	0
EB Weeks Claimed:	0	0
EB Exhaustions:	0	0

Loans

	Rank
Outstanding Loan Bal (000):	\$0 2
Loan per Cov Employee:	\$0 2
Loan as % of Total Wages*:	0 2

* Based on extrapolated wages for the most recent 12 months.

** Wages and Covered Employment lag the rest of the Data Summary information by six months

*** Regular programs include State UI, UCFE and UCX.

+ Refers to most recent calendar year. Fourth and first quarter issues publish measure based on extrapolated wages. Second and third quarter issues publish measure based on actual wages.

See glossary for data definitions

Note: Blank cells appearing in any section of this report indicates that information is unavailable.

UI Data Summary for **Nebraska**

CYQ: 2008.2

Benefits	(Quarterly)	Past 12 Months	Rank	High Value : Qtr		Low Value : Qtr	
Benefits Paid (000):	\$21,354	\$90,750	48	\$40,183	2003.1	\$2,319	1971.3
Initial Claims:	16,102	69,488	41	29,750	1982.4	7,244	1972.2
First Payments:	7,359	32,719	44	22,141	1975.1	3,557	1972.2
Weeks Claimed:	121,043	516,529	44	314,764	1983.1	51,311	1972.3
Wks Compensated:	92,590	394,878	47	282,568	1983.1	45,263	1978.3
Exhaustions:	3,404	13,561	41	6,938	1983.1	917	1977.4
Exhaustion Rate:		41.8%	11	47.3%	1975.2	23.7%	1989.1
Average Duration:		12.1	49	15.4	1976.1	10.3	1980.2
AWBA:	\$237.68	\$236.25	45	\$241.46	2008.1	\$42.90	1971.3
As % of AWW:	35.4		34				
Avg. Benefits per First Payment:		\$2,774					

Financial Information	Past 12 Months	Rank
State Revenues (000):	\$114,093	40
Total Wages (000)**:	\$8,474,674	37
Total Wages (Taxable Employers)(000)**:	\$6,681,059	37
Taxable Wages (000)**:	\$707,303	40
Avg. Weekly Wage**:	\$670.91	43
Avg. Tax Rate on Taxable Wages (%) **:	1.65	32
Avg. Tax Rate on Total Wages (%) **:	0.47	37
Calendar Yr Taxable Wage Base:	\$9,000	31
Trust Fund (TF) Balance (000):		
(Including Loans):	\$298,499	36
TF as % of Total Wages*:	1.17	22
Interest Earned (000):	\$3,494	36
Avg. High Cost Multiple +:	1.19	12
High Cost Multiple +:	0.73	15

Labor Force	(Quarterly)	Past 12 Mos	Rank
IUR (%):	1.0	1.1	47
TUR (%):	3.2	3.1	49
Total Unemp. (000):	32.2	30.7	41
Insured Unemployed (000) ***			
Regular Programs:	9.3	9.9	44
All Programs:	9.3	9.9	44
Reciency Rates (%) ***			
Regular Programs:	29	32	38
All Programs:	29	32	38
Covered Emp. (000)**:	910	901	37
Civ. Labor Force (000):	1,001	989	37
Subj. Employers (000):	48	48	38

Extended Benefits	(Quarterly)	Past 12 Months
Extended Benefits (000):	\$0	\$0
EB First Payments:	0	0
EB Weeks Claimed:	0	0
EB Exhaustions:	0	0

Loans	Rank
Outstanding Loan Bal (000):	\$0 2
Loan per Cov Employee:	\$0 2
Loan as % of Total Wages*:	0 2

* Based on extrapolated wages for the most recent 12 months.

** Wages and Covered Employment lag the rest of the Data Summary information by six months

*** Regular programs include State UI, UCFE and UCX.

+ Refers to most recent calendar year. Fourth and first quarter issues publish measure based on extrapolated wages. Second and third quarter issues publish measure based on actual wages.

See glossary for data definitions

Note: Blank cells appearing in any section of this report indicates that information is unavailable.

UI Data Summary for Nevada

CYQ: 2008.2

Benefits	(Quarterly)	Past 12 Months	Rank	High Value : Qtr		Low Value : Qtr	
<u>Benefits Paid (000):</u>	\$114,982	\$405,045	23	\$116,743	2008.1	\$3,807	1971.2
<u>Initial Claims:</u>	50,082	189,086	28	65,819	2001.4	15,524	1989.2
<u>First Payments:</u>	24,128	97,202	27	37,987	2001.4	5,250	1973.2
<u>Weeks Claimed:</u>	448,224	1,584,657	26	511,261	2001.4	81,969	1973.3
<u>Wks Compensated:</u>	407,793	1,438,010	27	449,715	2002.1	70,349	1978.3
<u>Exhaustions:</u>	10,637	33,638	24	12,048	2002.2	1,506	1978.3
<u>Exhaustion Rate:</u>		41.4%	14	50.0%	1976.3	21.3%	1989.3
<u>Average Duration:</u>		14.8	21	16.9	1983.4	11.4	1979.2
<u>AWBA:</u>	\$289.13	\$288.49	27	\$292.19	2008.1	\$46.51	1971.2
As % of AWW:	35.9		31				
<u>Avg. Benefits per First Payment:</u>		\$4,167					

Financial Information	Past 12 Months	Rank
<u>State Revenues (000):</u>	\$366,205	24
<u>Total Wages (000)**:</u>	\$14,363,027	29
<u>Total Wages (Taxable Employers)(000)**:</u>	\$12,531,473	29
<u>Taxable Wages (000)**:</u>	\$3,638,459	17
<u>Avg. Weekly Wage**:</u>	\$805.71	19
<u>Avg. Tax Rate on Taxable Wages (%) **:</u>	1.41	41
<u>Avg. Tax Rate on Total Wages (%) **:</u>	0.78	14
<u>Calendar Yr Taxable Wage Base:</u>	\$25,400	7
<u>Trust Fund (TF) Balance (000):</u>		
(Including Loans):	\$754,146	17
<u>TF as % of Total Wages*:</u>	1.59	16
<u>Interest Earned (000):</u>	\$9,129	16
<u>Avg. High Cost Multiple +:</u>	1.02	18
<u>High Cost Multiple +:</u>	0.63	21

Labor Force	(Quarterly)	Past 12 Mos	Rank
<u>IUR (%):</u>	2.7	2.4	9
<u>TUR (%):</u>	6.0	5.5	11
<u>Total Unemp. (000):</u>	83.7	75.3	30
Insured Unemployed (000) ***			
<u>Regular Programs:</u>	34.9	30.7	26
<u>All Programs:</u>	34.9	30.7	26
Reciency Rates (%) ***			
<u>Regular Programs:</u>	42	41	13
<u>All Programs:</u>	42	41	13
<u>Covered Emp. (000)**:</u>	1,274	1,268	32
<u>Civ. Labor Force (000):</u>	1,391	1,366	32
<u>Subj. Employers (000):</u>	61	60	35

Extended Benefits	(Quarterly)	Past 12 Months
<u>Extended Benefits (000):</u>	\$0	\$0
EB First Payments:	0	0
EB Weeks Claimed:	0	0
EB Exhaustions:	0	0

Loans	Rank
<u>Outstanding Loan Bal (000):</u>	\$0 2
Loan per Cov Employee:	\$0 2
Loan as % of Total Wages*:	0 2

* Based on extrapolated wages for the most recent 12 months.

** Wages and Covered Employment lag the rest of the Data Summary information by six months

*** Regular programs include State UI, UCFE and UCX.

+ Refers to most recent calendar year. Fourth and first quarter issues publish measure based on extrapolated wages. Second and third quarter issues publish measure based on actual wages.

See glossary for data definitions

Note: Blank cells appearing in any section of this report indicates that information is unavailable.

UI Data Summary for New Hampshire

CYQ: 2008.2

Benefits	(Quarterly)	Past 12 Months	Rank	High Value : Qtr		Low Value : Qtr	
<u>Benefits Paid (000):</u>	\$26,866	\$95,271	45	\$34,830	2003.1	\$1,519	1972.4
<u>Initial Claims:</u>	14,244	55,929	45	37,881	1974.4	5,974	2000.2
<u>First Payments:</u>	7,350	28,447	45	31,034	1975.2	2,086	1999.4
<u>Weeks Claimed:</u>	115,137	419,201	46	266,020	1975.1	24,573	1987.4
<u>Wks Compensated:</u>	101,568	363,093	45	240,574	1975.1	16,768	1987.4
<u>Exhaustions:</u>	1,489	4,793	48	5,519	1991.4	1	1985.3
<u>Exhaustion Rate:</u>		18.4%	52	33.8%	2003.2	1.8%	1988.1
<u>Average Duration:</u>		12.8	45	18.0	2004.1	5.4	1988.1
<u>AWBA:</u>	\$272.26	\$270.14	35	\$278.39	2007.4	\$45.06	1971.2
As % of AWW:	32.5		40				
<u>Avg. Benefits per First Payment:</u>		\$3,349					

Financial Information	Past 12 Months	Rank
<u>State Revenues (000):</u>	\$52,162	50
<u>Total Wages (000)**:</u>	\$7,430,010	39
<u>Total Wages (Taxable Employers)(000)**:</u>	\$6,000,718	38
<u>Taxable Wages (000)**:</u>	\$424,049	46
<u>Avg. Weekly Wage**:</u>	\$837.41	15
<u>Avg. Tax Rate on Taxable Wages (%) **:</u>	1.25	44
<u>Avg. Tax Rate on Total Wages (%) **:</u>	0.26	52
<u>Calendar Yr Taxable Wage Base:</u>	\$8,000	41
<u>Trust Fund (TF) Balance (000):</u>		
(Including Loans):	\$216,367	42
<u>TF as % of Total Wages*:</u>	1.00	26
<u>Interest Earned (000):</u>	\$2,605	40
<u>Avg. High Cost Multiple +:</u>	1.19	12
<u>High Cost Multiple +:</u>	0.44	27

Labor Force	(Quarterly)	Past 12 Mos	Rank
<u>IUR (%):</u>	1.5	1.3	40
<u>TUR (%):</u>	3.9	3.6	40
<u>Total Unemp. (000):</u>	28.9	26.9	42
<u>Insured Unemployed (000) ***</u>			
<u>Regular Programs:</u>	9.2	8.3	45
<u>All Programs:</u>	9.2	8.3	45
<u>Reciency Rates (%) ***</u>			
<u>Regular Programs:</u>	32	31	31
<u>All Programs:</u>	32	31	31
<u>Covered Emp. (000)**:</u>	628	622	41
<u>Civ. Labor Force (000):</u>	745	741	41
<u>Subj. Employers (000):</u>	41	41	41

Extended Benefits	(Quarterly)	Past 12 Months
<u>Extended Benefits (000):</u>	\$0	\$0
EB First Payments:	0	0
EB Weeks Claimed:	0	0
EB Exhaustions:	0	0

Loans	Rank
<u>Outstanding Loan Bal (000):</u>	\$0 2
Loan per Cov Employee:	\$0 2
Loan as % of Total Wages*:	0 2

* Based on extrapolated wages for the most recent 12 months.

** Wages and Covered Employment lag the rest of the Data Summary information by six months

*** Regular programs include State UI, UCFE and UCX.

+ Refers to most recent calendar year. Fourth and first quarter issues publish measure based on extrapolated wages. Second and third quarter issues publish measure based on actual wages.

See glossary for data definitions

Note: Blank cells appearing in any section of this report indicates that information is unavailable.

UI Data Summary for New Jersey

CYQ: 2008.2

Benefits	(Quarterly)	Past 12 Months	Rank	High Value : Qtr		Low Value : Qtr	
<u>Benefits Paid (000):</u>	\$530,267	\$2,071,506	4	\$619,079	2008.1	\$64,334	1972.4
<u>Initial Claims:</u>	143,588	575,476	11	290,136	1975.1	93,677	1987.3
<u>First Payments:</u>	70,236	322,299	8	185,783	1975.1	45,958	1988.2
<u>Weeks Claimed:</u>	1,549,940	6,336,751	7	2,824,241	1975.1	762,372	1987.4
<u>Wks Compensated:</u>	1,444,058	5,842,671	7	2,724,700	1975.1	715,819	1987.4
<u>Exhaustions:</u>	38,142	142,657	5	65,321	1975.2	18,202	1988.4
<u>Exhaustion Rate:</u>		45.8%	6	58.7%	2003.1	33.3%	1988.3
<u>Average Duration:</u>		18.1	3	19.5	1993.1	13.7	1974.1
<u>AWBA:</u>	\$381.16	\$367.43	3	\$381.16	2008.2	\$61.32	1971.1
As % of AWW:	37.0		29				
<u>Avg. Benefits per First Payment:</u>		\$6,427					

Financial Information	Past 12 Months	Rank
<u>State Revenues (000):</u>	\$1,941,349	5
<u>Total Wages (000)**:</u>	\$55,928,439	7
<u>Total Wages (Taxable Employers)(000)**:</u>	\$45,942,724	7
<u>Taxable Wages (000)**:</u>	\$9,249,758	3
<u>Avg. Weekly Wage**:</u>	\$1,031.22	5
<u>Avg. Tax Rate on Taxable Wages (%) **:</u>	2.03	22
<u>Avg. Tax Rate on Total Wages (%) **:</u>	0.88	10
<u>Calendar Yr Taxable Wage Base:</u>	\$27,700	5
<u>Trust Fund (TF) Balance (000):</u>		
(Including Loans):	\$847,031	15
<u>TF as % of Total Wages*:</u>	0.48	42
<u>Interest Earned (000):</u>	\$6,367	25
<u>Avg. High Cost Multiple +:</u>	0.21	49
<u>High Cost Multiple +:</u>	0.11	49

Labor Force	(Quarterly)	Past 12 Mos	Rank
<u>IUR (%):</u>	3.0	3.0	8
<u>TUR (%):</u>	5.1	4.6	23
<u>Total Unemp. (000):</u>	229.9	207.9	11
Insured Unemployed (000) ***			
<u>Regular Programs:</u>	115.7	118.5	7
<u>All Programs:</u>	115.7	118.5	7
Reciency Rates (%) ***			
<u>Regular Programs:</u>	50	57	6
<u>All Programs:</u>	50	57	6
<u>Covered Emp. (000)**:</u>	3,953	3,900	11
<u>Civ. Labor Force (000):</u>	4,513	4,483	11
<u>Subj. Employers (000):</u>	245	246	7

Extended Benefits	(Quarterly)	Past 12 Months
<u>Extended Benefits (000):</u>	\$0	\$0
EB First Payments:	0	0
EB Weeks Claimed:	0	0
EB Exhaustions:	0	0

Loans	Rank	
<u>Outstanding Loan Bal (000):</u>	\$0	2
Loan per Cov Employee:	\$0	2
Loan as % of Total Wages*:	0	2

* Based on extrapolated wages for the most recent 12 months.

** Wages and Covered Employment lag the rest of the Data Summary information by six months

*** Regular programs include State UI, UCFE and UCX.

+ Refers to most recent calendar year. Fourth and first quarter issues publish measure based on extrapolated wages. Second and third quarter issues publish measure based on actual wages.

See glossary for data definitions

Note: Blank cells appearing in any section of this report indicates that information is unavailable.

UI Data Summary for New Mexico

CYQ: 2008.2

Benefits	(Quarterly)	Past 12 Months	Rank	High Value : Qtr		Low Value : Qtr	
<u>Benefits Paid (000):</u>	\$38,914	\$141,298	38	\$39,213	2008.1	\$2,686	1972.3
<u>Initial Claims:</u>	14,792	56,703	44	25,921	1983.1	9,060	2006.1
<u>First Payments:</u>	8,343	32,097	41	12,622	1975.1	3,613	1972.2
<u>Weeks Claimed:</u>	165,137	615,587	39	275,784	1983.1	82,983	1972.3
<u>Wks Compensated:</u>	142,574	529,302	40	220,164	1983.1	58,692	1972.3
<u>Exhaustions:</u>	3,774	13,266	38	5,308	1983.1	994	1978.4
<u>Exhaustion Rate:</u>		43.6%	9	46.4%	1983.2	21.8%	1979.4
<u>Average Duration:</u>		16.5	11	19.3	1976.1	14.1	1980.2
<u>AWBA:</u>	\$274.74	\$268.81	32	\$274.74	2008.2	\$44.69	1971.2
As % of AWW:	40.4		19				
<u>Avg. Benefits per First Payment:</u>		\$4,402					

Financial Information	Past 12 Months	Rank
<u>State Revenues (000):</u>	\$98,054	45
<u>Total Wages (000)**:</u>	\$7,493,170	38
<u>Total Wages (Taxable Employers)(000)**:</u>	\$5,932,451	39
<u>Taxable Wages (000)**:</u>	\$1,500,257	36
<u>Avg. Weekly Wage**:</u>	\$680.18	41
<u>Avg. Tax Rate on Taxable Wages (%) **:</u>	0.95	49
<u>Avg. Tax Rate on Total Wages (%) **:</u>	0.47	36
<u>Calendar Yr Taxable Wage Base:</u>	\$19,900	14
<u>Trust Fund (TF) Balance (000):</u>		
(Including Loans):	\$553,315	25
<u>TF as % of Total Wages*:</u>	2.45	10
<u>Interest Earned (000):</u>	\$6,689	23
<u>Avg. High Cost Multiple +:</u>	1.88	2
<u>High Cost Multiple +:</u>	1.60	1

Labor Force	(Quarterly)	Past 12 Mos	Rank
<u>IUR (%):</u>	1.6	1.5	39
<u>TUR (%):</u>	3.9	3.5	41
<u>Total Unemp. (000):</u>	36.9	33.3	39
Insured Unemployed (000) ***			
<u>Regular Programs:</u>	13.1	12.4	39
<u>All Programs:</u>	13.1	12.4	39
Reciency Rates (%) ***			
<u>Regular Programs:</u>	36	37	23
<u>All Programs:</u>	36	37	23
<u>Covered Emp. (000)**:</u>	800	791	38
<u>Civ. Labor Force (000):</u>	951	947	38
<u>Subj. Employers (000):</u>	46	46	39

Extended Benefits	(Quarterly)	Past 12 Months
<u>Extended Benefits (000):</u>	\$0	\$0
EB First Payments:	0	0
EB Weeks Claimed:	0	0
EB Exhaustions:	0	0

Loans	Rank
<u>Outstanding Loan Bal (000):</u>	\$0 2
Loan per Cov Employee:	\$0 2
Loan as % of Total Wages*:	0 2

* Based on extrapolated wages for the most recent 12 months.

** Wages and Covered Employment lag the rest of the Data Summary information by six months

*** Regular programs include State UI, UCFE and UCX.

+ Refers to most recent calendar year. Fourth and first quarter issues publish measure based on extrapolated wages. Second and third quarter issues publish measure based on actual wages.

See glossary for data definitions

Note: Blank cells appearing in any section of this report indicates that information is unavailable.

UI Data Summary for New York

CYQ: 2008.2

Benefits	(Quarterly)	Past 12 Months	Rank	High Value : Qtr		Low Value : Qtr	
<u>Benefits Paid (000):</u>	\$605,622	\$2,409,346	3	\$933,140	2002.1	\$126,179	1973.4
<u>Initial Claims:</u>	249,163	1,047,685	3	674,249	1974.4	188,751	2000.3
<u>First Payments:</u>	106,746	489,556	3	355,805	1975.1	78,936	1985.2
<u>Weeks Claimed:</u>	2,359,536	9,470,743	2	5,968,340	1975.1	1,728,933	1999.4
<u>Wks Compensated:</u>	2,053,899	8,272,286	2	5,422,159	1975.1	1,543,669	2000.2
<u>Exhaustions:</u>	42,930	165,249	4	119,461	1975.3	36,374	1988.1
<u>Exhaustion Rate:</u>		36.1%	25	59.2%	2003.2	29.2%	1974.3
<u>Average Duration:</u>		16.9	8	23.0	1976.1	15.4	2001.2
<u>AWBA:</u>	\$307.07	\$303.15	15	\$307.07	2008.2	\$57.80	1971.3
As % of AWW:	26.9		50				
<u>Avg. Benefits per First Payment:</u>		\$4,921					

Financial Information	Past 12 Months	Rank
<u>State Revenues (000):</u>	\$2,318,341	2
<u>Total Wages (000)**:</u>	\$128,765,921	2
<u>Total Wages (Taxable Employers)(000)**:</u>	\$101,343,811	3
<u>Taxable Wages (000)**:</u>	\$5,861,053	4
<u>Avg. Weekly Wage**:</u>	\$1,141.89	2
<u>Avg. Tax Rate on Taxable Wages (%) **:</u>	3.48	6
<u>Avg. Tax Rate on Total Wages (%) **:</u>	0.55	31
<u>Calendar Yr Taxable Wage Base:</u>	\$8,500	35
<u>Trust Fund (TF) Balance (000):</u>		
(Including Loans):	\$698,517	21
<u>TF as % of Total Wages*:</u>	0.17	52
<u>Interest Earned (000):</u>	\$6,285	27
<u>Avg. High Cost Multiple +:</u>	0.09	52
<u>High Cost Multiple +:</u>	0.04	52

Labor Force	(Quarterly)	Past 12 Mos	Rank
<u>IUR (%):</u>	2.1	2.2	19
<u>TUR (%):</u>	4.9	4.8	28
<u>Total Unemp. (000):</u>	469.4	460.0	4
Insured Unemployed (000) ***			
<u>Regular Programs:</u>	182.4	182.7	2
<u>All Programs:</u>	182.4	182.7	2
Reciency Rates (%) ***			
<u>Regular Programs:</u>	39	40	17
<u>All Programs:</u>	39	40	17
<u>Covered Emp. (000)**:</u>	8,601	8,427	3
<u>Civ. Labor Force (000):</u>	9,579	9,554	3
<u>Subj. Employers (000):</u>	491	494	3

Extended Benefits	(Quarterly)	Past 12 Months
<u>Extended Benefits (000):</u>	\$0	\$0
EB First Payments:	0	0
EB Weeks Claimed:	0	0
EB Exhaustions:	0	0

Loans	Rank
<u>Outstanding Loan Bal (000):</u>	\$0 2
Loan per Cov Employee:	\$0 2
Loan as % of Total Wages*:	0 2

* Based on extrapolated wages for the most recent 12 months.

** Wages and Covered Employment lag the rest of the Data Summary information by six months

*** Regular programs include State UI, UCFE and UCX.

+ Refers to most recent calendar year. Fourth and first quarter issues publish measure based on extrapolated wages. Second and third quarter issues publish measure based on actual wages.

See glossary for data definitions

Note: Blank cells appearing in any section of this report indicates that information is unavailable.

UI Data Summary for North Carolina

CYQ: 2008.2

Benefits	(Quarterly)	Past 12 Months	Rank	High Value : Qtr		Low Value : Qtr	
<u>Benefits Paid (000):</u>	\$270,592	\$1,009,858	11	\$347,056	2002.1	\$5,433	1973.4
<u>Initial Claims:</u>	170,690	692,687	8	603,068	1982.1	39,534	1972.4
<u>First Payments:</u>	62,435	262,145	10	247,972	1975.1	13,856	1972.4
<u>Weeks Claimed:</u>	1,193,743	4,448,268	10	2,374,887	1975.1	177,061	1973.4
<u>Wks Compensated:</u>	983,036	3,697,819	11	1,945,163	1975.1	131,814	1973.4
<u>Exhaustions:</u>	29,719	107,955	9	39,392	1975.2	1,894	1973.4
<u>Exhaustion Rate:</u>		44.4%	8	44.4%	2008.2	12.5%	1989.1
<u>Average Duration:</u>		14.1	30	14.2	2004.2	7.5	1988.4
<u>AWBA:</u>	\$284.16	\$282.30	28	\$284.16	2008.2	\$38.77	1972.2
As % of AWW:	38.3		25				
<u>Avg. Benefits per First Payment:</u>		\$3,852					

Financial Information	Past 12 Months	Rank
<u>State Revenues (000):</u>	\$924,771	11
<u>Total Wages (000)**:</u>	\$40,701,961	13
<u>Total Wages (Taxable Employers)(000)**:</u>	\$33,005,637	13
<u>Taxable Wages (000)**:</u>	\$6,461,539	8
<u>Avg. Weekly Wage**:</u>	\$742.47	28
<u>Avg. Tax Rate on Taxable Wages (%) **:</u>	1.88	26
<u>Avg. Tax Rate on Total Wages (%) **:</u>	0.81	12
<u>Calendar Yr Taxable Wage Base:</u>	\$18,600	15
<u>Trust Fund (TF) Balance (000):</u>		
(Including Loans):	\$467,345	29
<u>TF as % of Total Wages*:</u>	0.36	46
<u>Interest Earned (000):</u>	\$5,142	31
<u>Avg. High Cost Multiple +:</u>	0.23	47
<u>High Cost Multiple +:</u>	0.13	48

Labor Force	(Quarterly)	Past 12 Mos	Rank
<u>IUR (%):</u>	2.3	2.1	18
<u>TUR (%):</u>	5.7	5.1	14
<u>Total Unemp. (000):</u>	260.2	230.3	10
Insured Unemployed (000) ***			
<u>Regular Programs:</u>	92.7	86.8	10
<u>All Programs:</u>	92.7	86.8	10
Reciency Rates (%) ***			
<u>Regular Programs:</u>	36	38	22
<u>All Programs:</u>	36	38	22
<u>Covered Emp. (000)**:</u>	4,056	4,000	9
<u>Civ. Labor Force (000):</u>	4,565	4,535	10
<u>Subj. Employers (000):</u>	204	201	11

Extended Benefits	(Quarterly)	Past 12 Months
<u>Extended Benefits (000):</u>	\$0	\$0
EB First Payments:	0	0
EB Weeks Claimed:	0	0
EB Exhaustions:	0	0

Loans	Rank
<u>Outstanding Loan Bal (000):</u>	\$0 2
Loan per Cov Employee:	\$0 2
Loan as % of Total Wages*:	0 2

* Based on extrapolated wages for the most recent 12 months.

** Wages and Covered Employment lag the rest of the Data Summary information by six months

*** Regular programs include State UI, UCFE and UCX.

+ Refers to most recent calendar year. Fourth and first quarter issues publish measure based on extrapolated wages. Second and third quarter issues publish measure based on actual wages.

See glossary for data definitions

Note: Blank cells appearing in any section of this report indicates that information is unavailable.

UI Data Summary for North Dakota

CYQ: 2008.2

Benefits	(Quarterly)	Past 12 Months	Rank	High Value : Qtr		Low Value : Qtr	
<u>Benefits Paid (000):</u>	\$7,184	\$39,962	51	\$23,730	1983.1	\$620	1971.3
<u>Initial Claims:</u>	4,204	23,510	51	19,325	1982.4	2,017	1971.3
<u>First Payments:</u>	1,885	12,036	51	11,508	1983.1	929	1971.3
<u>Weeks Claimed:</u>	30,904	168,637	51	179,165	1983.1	19,179	1971.3
<u>Wks Compensated:</u>	26,214	144,899	51	171,825	1983.1	14,351	1971.3
<u>Exhaustions:</u>	1,301	4,262	50	4,709	1983.2	382	1971.4
<u>Exhaustion Rate:</u>		32.9%	34	47.0%	1983.2	23.0%	1979.1
<u>Average Duration:</u>		12.0	50	15.9	1987.1	9.8	1997.2
<u>AWBA:</u>	\$276.14	\$277.59	30	\$289.27	2008.1	\$43.75	1971.3
As % of AWW:	44.1		6				
<u>Avg. Benefits per First Payment:</u>		\$3,320					

Financial Information	Past 12 Months	Rank
<u>State Revenues (000):</u>	\$51,110	51
<u>Total Wages (000)**:</u>	\$2,993,115	51
<u>Total Wages (Taxable Employers)(000)**:</u>	\$2,275,574	51
<u>Taxable Wages (000)**:</u>	\$589,191	47
<u>Avg. Weekly Wage**:</u>	\$625.55	49
<u>Avg. Tax Rate on Taxable Wages (%) **:</u>	1.16	46
<u>Avg. Tax Rate on Total Wages (%) **:</u>	0.63	28
<u>Calendar Yr Taxable Wage Base:</u>	\$22,100	11
<u>Trust Fund (TF) Balance (000):</u>		
(Including Loans):	\$129,498	49
<u>TF as % of Total Wages*:</u>	1.52	19
<u>Interest Earned (000):</u>	\$1,540	49
<u>Avg. High Cost Multiple +:</u>	0.79	27
<u>High Cost Multiple +:</u>	0.71	18

Labor Force	(Quarterly)	Past 12 Mos	Rank
<u>IUR (%):</u>	0.7	1.0	52
<u>TUR (%):</u>	3.3	3.2	47
<u>Total Unemp. (000):</u>	12.4	11.8	50
<u>Insured Unemployed (000) ***</u>			
<u>Regular Programs:</u>	2.5	3.4	51
<u>All Programs:</u>	2.5	3.4	51
<u>Reciency Rates (%) ***</u>			
<u>Regular Programs:</u>	20	29	50
<u>All Programs:</u>	20	29	50
<u>Covered Emp. (000)**:</u>	339	332	49
<u>Civ. Labor Force (000):</u>	376	368	48
<u>Subj. Employers (000):</u>	20	20	51

Extended Benefits	(Quarterly)	Past 12 Months
<u>Extended Benefits (000):</u>	\$0	\$0
EB First Payments:	0	0
EB Weeks Claimed:	0	0
EB Exhaustions:	0	0

Loans	Rank
<u>Outstanding Loan Bal (000):</u>	\$0 2
Loan per Cov Employee:	\$0 2
Loan as % of Total Wages*:	0 2

* Based on extrapolated wages for the most recent 12 months.

** Wages and Covered Employment lag the rest of the Data Summary information by six months

*** Regular programs include State UI, UCFE and UCX.

+ Refers to most recent calendar year. Fourth and first quarter issues publish measure based on extrapolated wages. Second and third quarter issues publish measure based on actual wages.

See glossary for data definitions

Note: Blank cells appearing in any section of this report indicates that information is unavailable.

UI Data Summary for Ohio

CYQ: 2008.2

Benefits	(Quarterly)	Past 12 Months	Rank	High Value : Qtr		Low Value : Qtr	
<u>Benefits Paid (000):</u>	\$355,057	\$1,322,833	9	\$479,209	2002.1	\$19,670	1973.3
<u>Initial Claims:</u>	155,775	679,782	9	491,161	1982.4	77,739	1973.2
<u>First Payments:</u>	63,363	298,130	9	262,818	1975.1	29,637	1973.2
<u>Weeks Claimed:</u>	1,442,194	5,561,411	8	3,509,353	1982.1	469,902	1973.3
<u>Wks Compensated:</u>	1,211,619	4,553,510	8	3,169,009	1982.1	351,318	1973.4
<u>Exhaustions:</u>	23,148	80,308	11	72,068	1982.3	6,345	1973.4
<u>Exhaustion Rate:</u>		28.9%	43	44.9%	1983.1	16.5%	2000.4
<u>Average Duration:</u>		15.3	15	18.7	1983.4	10.2	1974.1
<u>AWBA:</u>	\$297.52	\$295.13	22	\$299.55	2008.1	\$49.28	1971.2
As % of AWW:	39.1		24				
<u>Avg. Benefits per First Payment:</u>		\$4,437					

Financial Information	Past 12 Months	Rank
<u>State Revenues (000):</u>	\$1,102,469	9
<u>Total Wages (000)**:</u>	\$53,912,781	8
<u>Total Wages (Taxable Employers)(000)**:</u>	\$43,085,224	8
<u>Taxable Wages (000)**:</u>	\$3,915,360	10
<u>Avg. Weekly Wage**:</u>	\$760.85	23
<u>Avg. Tax Rate on Taxable Wages (%) **:</u>	2.51	15
<u>Avg. Tax Rate on Total Wages (%) **:</u>	0.64	27
<u>Calendar Yr Taxable Wage Base:</u>	\$9,000	31
<u>Trust Fund (TF) Balance (000):</u>		
(Including Loans):	\$427,589	34
<u>TF as % of Total Wages*:</u>	0.26	49
<u>Interest Earned (000):</u>	\$4,483	34
<u>Avg. High Cost Multiple +:</u>	0.12	51
<u>High Cost Multiple +:</u>	0.09	50

Labor Force	(Quarterly)	Past 12 Mos	Rank
<u>IUR (%):</u>	2.1	2.1	20
<u>TUR (%):</u>	6.1	5.8	9
<u>Total Unemp. (000):</u>	364.3	347.5	7
Insured Unemployed (000) ***			
<u>Regular Programs:</u>	112.8	108.8	8
<u>All Programs:</u>	112.8	108.8	8
Reciency Rates (%) ***			
<u>Regular Programs:</u>	31	31	34
<u>All Programs:</u>	31	31	34
<u>Covered Emp. (000)**:</u>	5,263	5,230	7
<u>Civ. Labor Force (000):</u>	6,003	5,981	7
<u>Subj. Employers (000):</u>	229	228	8

Extended Benefits	(Quarterly)	Past 12 Months
<u>Extended Benefits (000):</u>	\$0	\$0
EB First Payments:	0	0
EB Weeks Claimed:	0	0
EB Exhaustions:	0	0

Loans	Rank	
<u>Outstanding Loan Bal (000):</u>	\$0	2
Loan per Cov Employee:	\$0	2
Loan as % of Total Wages*:	0	2

* Based on extrapolated wages for the most recent 12 months.

** Wages and Covered Employment lag the rest of the Data Summary information by six months

*** Regular programs include State UI, UCFE and UCX.

+ Refers to most recent calendar year. Fourth and first quarter issues publish measure based on extrapolated wages. Second and third quarter issues publish measure based on actual wages.

See glossary for data definitions

Note: Blank cells appearing in any section of this report indicates that information is unavailable.

UI Data Summary for **Oklahoma**

CYQ: 2008.2

Benefits	(Quarterly)	Past 12 Months	Rank	High Value : Qtr		Low Value : Qtr	
Benefits Paid (000):	\$42,487	\$158,615	37	\$77,707	1983.1	\$5,871	1972.3
Initial Claims:	25,947	105,111	35	72,345	1982.3	19,985	2000.2
First Payments:	11,156	42,599	35	40,001	1982.4	7,273	1978.3
Weeks Claimed:	189,939	741,153	35	623,327	1983.1	130,917	1978.3
Wks Compensated:	160,943	629,943	37	552,703	1983.1	86,510	1978.3
Exhaustions:	3,552	15,475	39	22,782	1983.1	2,430	1998.4
Exhaustion Rate:		37.1%	21	59.8%	1983.2	24.7%	2000.4
Average Duration:		14.8	22	17.4	2004.2	10.3	1982.2
AWBA:	\$270.20	\$257.66	36	\$278.55	2008.1	\$14.70	1971.1
As % of AWW:	40.4		17				
Avg. Benefits per First Payment:		\$3,723					

Financial Information	Past 12 Months	Rank
State Revenues (000):	\$179,951	34
Total Wages (000)**:	\$13,925,122	31
Total Wages (Taxable Employers)(000)**:	\$11,866,749	31
Taxable Wages (000)**:	\$1,984,078	28
Avg. Weekly Wage**:	\$668.16	44
Avg. Tax Rate on Taxable Wages (%) **:	1.13	48
Avg. Tax Rate on Total Wages (%) **:	0.44	40
Calendar Yr Taxable Wage Base:	\$13,600	19
Trust Fund (TF) Balance (000):		
(Including Loans):	\$860,554	13
TF as % of Total Wages*:	1.89	14
Interest Earned (000):	\$10,274	13
Avg. High Cost Multiple +:	1.51	6
High Cost Multiple +:	1.39	3

Labor Force	(Quarterly)	Past 12 Mos	Rank
IUR (%):	1.0	1.0	48
TUR (%):	3.5	3.9	46
Total Unemp. (000):	61.3	67.4	34
Insured Unemployed (000) ***			
Regular Programs:	15.0	14.7	36
All Programs:	15.0	14.7	36
Reciency Rates (%) ***			
Regular Programs:	24	22	46
All Programs:	24	22	46
Covered Emp. (000)**:	1,516	1,489	29
Civ. Labor Force (000):	1,737	1,730	29
Subj. Employers (000):	82	82	29

Extended Benefits	(Quarterly)	Past 12 Months
Extended Benefits (000):	\$0	\$0
EB First Payments:	0	0
EB Weeks Claimed:	0	0
EB Exhaustions:	0	0

Loans	Rank
Outstanding Loan Bal (000):	\$0 2
Loan per Cov Employee:	\$0 2
Loan as % of Total Wages*:	0 2

* Based on extrapolated wages for the most recent 12 months.

** Wages and Covered Employment lag the rest of the Data Summary information by six months

*** Regular programs include State UI, UCFE and UCX.

+ Refers to most recent calendar year. Fourth and first quarter issues publish measure based on extrapolated wages. Second and third quarter issues publish measure based on actual wages.

See glossary for data definitions

Note: Blank cells appearing in any section of this report indicates that information is unavailable.

UI Data Summary for Oregon

CYQ: 2008.2

Benefits	(Quarterly)	Past 12 Months	Rank	High Value : Qtr		Low Value : Qtr	
Benefits Paid (000):	\$175,939	\$635,360	17	\$234,369	2002.1	\$7,771	1972.3
Initial Claims:	96,052	390,111	16	153,754	2001.4	39,945	1972.3
First Payments:	35,487	154,732	17	61,610	2003.1	11,218	1972.3
Weeks Claimed:	691,836	2,556,833	16	1,050,912	1982.1	236,902	1972.3
Wks Compensated:	606,994	2,210,463	17	978,274	2003.1	171,876	1972.3
Exhaustions:	13,352	43,877	17	23,099	2002.2	2,889	1973.4
Exhaustion Rate:		31.7%	37	46.9%	2003.2	18.4%	1979.4
Average Duration:		14.3	25	18.0	2002.4	12.0	1980.2
AWBA:	\$296.13	\$293.33	23	\$296.36	2007.4	\$42.83	1971.2
As % of AWW:	39.3		21				
Avg. Benefits per First Payment:		\$4,106					

Financial Information	Past 12 Months	Rank
State Revenues (000):	\$826,751	14
Total Wages (000)**:	\$17,652,057	26
Total Wages (Taxable Employers)(000)**:	\$14,028,347	27
Taxable Wages (000)**:	\$4,712,774	15
Avg. Weekly Wage**:	\$753.77	25
Avg. Tax Rate on Taxable Wages (%) **:	1.95	24
Avg. Tax Rate on Total Wages (%) **:	1.16	3
Calendar Yr Taxable Wage Base:	\$30,200	4
Trust Fund (TF) Balance (000):		
(Including Loans):	\$2,118,859	3
TF as % of Total Wages*:	3.91	1
Interest Earned (000):	\$23,104	4
Avg. High Cost Multiple +:	1.46	8
High Cost Multiple +:	1.14	6

Labor Force	(Quarterly)	Past 12 Mos	Rank
IUR (%):	3.2	2.9	4
TUR (%):	5.4	5.4	17
Total Unemp. (000):	104.8	105.4	26
Insured Unemployed (000) ***			
Regular Programs:	54.4	50.5	16
All Programs:	54.4	50.5	16
Reciency Rates (%) ***			
Regular Programs:	52	48	5
All Programs:	52	48	5
Covered Emp. (000)**:	1,718	1,699	27
Civ. Labor Force (000):	1,944	1,940	27
Subj. Employers (000):	112	112	23

Extended Benefits	(Quarterly)	Past 12 Months
Extended Benefits (000):	\$0	\$0
EB First Payments:	0	0
EB Weeks Claimed:	0	0
EB Exhaustions:	0	0

Loans	Rank
Outstanding Loan Bal (000):	\$0 2
Loan per Cov Employee:	\$0 2
Loan as % of Total Wages*:	0 2

* Based on extrapolated wages for the most recent 12 months.

** Wages and Covered Employment lag the rest of the Data Summary information by six months

*** Regular programs include State UI, UCFE and UCX.

+ Refers to most recent calendar year. Fourth and first quarter issues publish measure based on extrapolated wages. Second and third quarter issues publish measure based on actual wages.

See glossary for data definitions

Note: Blank cells appearing in any section of this report indicates that information is unavailable.

UI Data Summary for **Pennsylvania**

CYQ: 2008.2

Benefits	(Quarterly)	Past 12 Months	Rank	High Value : Qtr		Low Value : Qtr	
Benefits Paid (000):	\$618,230	\$2,425,939	2	\$844,154	2003.1	\$65,467	1971.3
Initial Claims:	301,901	1,269,505	2	595,313	1982.4	188,957	2000.3
First Payments:	105,669	477,475	4	294,655	1975.1	70,828	1973.2
Weeks Claimed:	2,234,344	9,176,637	3	4,645,096	1983.1	1,301,090	1988.4
Wks Compensated:	1,978,811	7,843,816	3	4,309,149	1983.1	1,122,944	1988.4
Exhaustions:	36,317	138,019	6	77,689	1983.1	15,144	1973.4
Exhaustion Rate:		29.9%	42	38.3%	1994.1	16.7%	1980.1
Average Duration:		16.4	12	20.9	1983.3	13.5	1979.3
AWBA:	\$333.51	\$328.77	8	\$336.59	2008.1	\$50.64	1971.3
As % of AWW:	40.4		18				
Avg. Benefits per First Payment:		\$5,081					

Financial Information	Past 12 Months	Rank
State Revenues (000):	\$2,274,627	3
Total Wages (000)**:	\$63,213,175	6
Total Wages (Taxable Employers)(000)**:	\$49,787,483	6
Taxable Wages (000)**:	\$3,633,170	12
Avg. Weekly Wage**:	\$824.79	17
Avg. Tax Rate on Taxable Wages (%) **:	5.01	1
Avg. Tax Rate on Total Wages (%) **:	1.06	6
Calendar Yr Taxable Wage Base:	\$8,000	41
Trust Fund (TF) Balance (000):		
(Including Loans):	\$1,719,203	7
TF as % of Total Wages*:	0.90	28
Interest Earned (000):	\$18,457	7
Avg. High Cost Multiple +:	0.30	42
High Cost Multiple +:	0.25	39

Labor Force	(Quarterly)	Past 12 Mos	Rank
IUR (%):	3.0	3.1	6
TUR (%):	5.0	4.7	25
Total Unemp. (000):	321.9	300.2	8
Insured Unemployed (000) ***			
Regular Programs:	170.4	175.6	3
All Programs:	170.4	175.6	3
Reciency Rates (%) ***			
Regular Programs:	53	58	4
All Programs:	53	58	4
Covered Emp. (000)**:	5,612	5,549	6
Civ. Labor Force (000):	6,385	6,327	6
Subj. Employers (000):	288	289	6

Extended Benefits	(Quarterly)	Past 12 Months
Extended Benefits (000):	\$0	\$0
EB First Payments:	0	0
EB Weeks Claimed:	0	0
EB Exhaustions:	0	0

Loans	Rank
Outstanding Loan Bal (000):	\$0 2
Loan per Cov Employee:	\$0 2
Loan as % of Total Wages*:	0 2

* Based on extrapolated wages for the most recent 12 months.

** Wages and Covered Employment lag the rest of the Data Summary information by six months

*** Regular programs include State UI, UCFE and UCX.

+ Refers to most recent calendar year. Fourth and first quarter issues publish measure based on extrapolated wages. Second and third quarter issues publish measure based on actual wages.

See glossary for data definitions

Note: Blank cells appearing in any section of this report indicates that information is unavailable.

UI Data Summary for Puerto Rico

CYQ: 2008.2

Benefits	(Quarterly)	Past 12 Months	Rank	High Value : Qtr		Low Value : Qtr	
<u>Benefits Paid (000):</u>	\$53,033	\$207,013	33	\$67,074	2001.3	\$9,234	1971.2
<u>Initial Claims:</u>	43,605	159,149	30	132,965	2006.2	33,814	2007.4
<u>First Payments:</u>	28,709	102,183	21	46,272	1998.4	6,319	1984.1
<u>Weeks Claimed:</u>	533,016	2,107,714	23	922,160	1975.2	341,054	1988.2
<u>Wks Compensated:</u>	482,072	1,898,679	21	671,786	1994.2	198,213	1983.2
<u>Exhaustions:</u>	11,764	47,568	20	26,319	1976.3	3,103	1983.2
<u>Exhaustion Rate:</u>		48.0%	4	98.6%	1984.3	30.3%	1982.2
<u>Average Duration:</u>		18.6	2	39.4	1984.3	13.8	1989.4
<u>AWBA:</u>	\$113.44	\$112.13	53	\$113.44	2008.2	\$29.70	1971.1
As % of AWW:	24.4		51				
<u>Avg. Benefits per First Payment:</u>		\$2,026					

Financial Information	Past 12 Months	Rank
<u>State Revenues (000):</u>	\$184,429	33
<u>Total Wages (000)**:</u>	\$6,654,155	40
<u>Total Wages (Taxable Employers)(000)**:</u>	\$4,493,560	43
<u>Taxable Wages (000)**:</u>	\$532,922	43
<u>Avg. Weekly Wage**:</u>	\$465.61	53
<u>Avg. Tax Rate on Taxable Wages (%) **:</u>	3.18	8
<u>Avg. Tax Rate on Total Wages (%) **:</u>	1.06	7
<u>Calendar Yr Taxable Wage Base:</u>	\$7,000	49
<u>Trust Fund (TF) Balance (000):</u>		
(Including Loans):	\$547,315	26
<u>TF as % of Total Wages*:</u>	3.30	3
<u>Interest Earned (000):</u>	\$6,342	26
<u>Avg. High Cost Multiple +:</u>	1.00	19
<u>High Cost Multiple +:</u>	0.73	15

Labor Force	(Quarterly)	Past 12 Mos	Rank
<u>IUR (%):</u>	4.2	4.1	1
<u>TUR (%):</u>	11.0	11.0	1
<u>Total Unemp. (000):</u>	150.3	150.5	18
Insured Unemployed (000) ***			
<u>Regular Programs:</u>	42.2	41.8	23
<u>All Programs:</u>	42.2	41.8	23
Reciency Rates (%) ***			
<u>Regular Programs:</u>	28	28	39
<u>All Programs:</u>	28	28	39
<u>Covered Emp. (000)**:</u>	1,014	1,002	36
<u>Civ. Labor Force (000):</u>	1,369	1,368	35
<u>Subj. Employers (000):</u>	71	70	33

Extended Benefits	(Quarterly)	Past 12 Months
<u>Extended Benefits (000):</u>	\$0	\$0
EB First Payments:	0	0
EB Weeks Claimed:	0	0
EB Exhaustions:	0	0

Loans	Rank
<u>Outstanding Loan Bal (000):</u>	\$0 2
Loan per Cov Employee:	\$0 2
Loan as % of Total Wages*:	0 2

* Based on extrapolated wages for the most recent 12 months.

** Wages and Covered Employment lag the rest of the Data Summary information by six months

*** Regular programs include State UI, UCFE and UCX.

+ Refers to most recent calendar year. Fourth and first quarter issues publish measure based on extrapolated wages. Second and third quarter issues publish measure based on actual wages.

See glossary for data definitions

Note: Blank cells appearing in any section of this report indicates that information is unavailable.

UI Data Summary for **Rhode Island**

CYQ: 2008.2

Benefits	(Quarterly)	Past 12 Months	Rank	High Value : Qtr		Low Value : Qtr	
Benefits Paid (000):	\$60,001	\$249,241	32	\$83,815	2008.1	\$6,858	1972.4
Initial Claims:	21,544	87,494	38	102,513	1978.2	14,082	1989.1
First Payments:	8,715	43,506	39	51,557	1978.2	6,427	1988.2
Weeks Claimed:	185,412	777,127	37	508,725	1975.1	104,435	1987.4
Wks Compensated:	168,748	697,221	36	444,513	1975.1	85,635	1987.4
Exhaustions:	5,098	17,453	34	12,648	1975.2	1,870	1987.4
Exhaustion Rate:		42.4%	10	51.5%	1994.1	18.6%	1979.1
Average Duration:		16.0	14	19.5	1976.1	9.2	1979.1
AWBA:	\$367.04	\$367.70	4	\$375.82	2008.1	\$54.10	1971.3
As % of AWW:	46.5		3				
Avg. Benefits per First Payment:		\$5,729					

Financial Information	Past 12 Months	Rank
State Revenues (000):	\$188,087	32
Total Wages (000)**:	\$5,074,799	46
Total Wages (Taxable Employers)(000)**:	\$3,770,952	46
Taxable Wages (000)**:	\$523,753	44
Avg. Weekly Wage**:	\$789.40	22
Avg. Tax Rate on Taxable Wages (%) **:	3.36	7
Avg. Tax Rate on Total Wages (%) **:	1.22	2
Calendar Yr Taxable Wage Base:	\$14,000	18
Trust Fund (TF) Balance (000):		
(Including Loans):	\$127,123	50
TF as % of Total Wages*:	0.89	30
Interest Earned (000):	\$1,461	50
Avg. High Cost Multiple +:	0.38	38
High Cost Multiple +:	0.25	39

Labor Force	(Quarterly)	Past 12 Mos	Rank
IUR (%):	3.0	3.1	7
TUR (%):	6.9	5.9	3
Total Unemp. (000):	39.2	33.8	38
Insured Unemployed (000) ***			
Regular Programs:	14.0	14.7	37
All Programs:	14.0	14.7	37
Reciency Rates (%) ***			
Regular Programs:	36	43	21
All Programs:	36	43	21
Covered Emp. (000)**:	472	470	45
Civ. Labor Force (000):	570	575	44
Subj. Employers (000):	34	34	44

Extended Benefits	(Quarterly)	Past 12 Months
Extended Benefits (000):	\$0	\$0
EB First Payments:	0	0
EB Weeks Claimed:	0	0
EB Exhaustions:	0	0

Loans	Rank
Outstanding Loan Bal (000):	\$0 2
Loan per Cov Employee:	\$0 2
Loan as % of Total Wages*:	0 2

* Based on extrapolated wages for the most recent 12 months.

** Wages and Covered Employment lag the rest of the Data Summary information by six months

*** Regular programs include State UI, UCFE and UCX.

+ Refers to most recent calendar year. Fourth and first quarter issues publish measure based on extrapolated wages. Second and third quarter issues publish measure based on actual wages.

See glossary for data definitions

Note: Blank cells appearing in any section of this report indicates that information is unavailable.

UI Data Summary for South Carolina

CYQ: 2008.2

Benefits	(Quarterly)	Past 12 Months	Rank	High Value : Qtr		Low Value : Qtr	
<u>Benefits Paid (000):</u>	\$106,708	\$397,661	25	\$123,120	2002.1	\$4,284	1973.3
<u>Initial Claims:</u>	79,485	318,779	19	259,218	1982.1	17,287	1973.2
<u>First Payments:</u>	30,889	127,077	20	132,837	1975.1	6,914	1972.4
<u>Weeks Claimed:</u>	568,685	2,157,800	20	1,140,593	1975.1	119,478	1973.2
<u>Wks Compensated:</u>	456,255	1,739,733	24	942,398	1975.1	93,407	1973.3
<u>Exhaustions:</u>	12,770	46,759	18	19,459	1975.2	2,196	1973.4
<u>Exhaustion Rate:</u>		41.0%	15	49.1%	1975.2	17.7%	1990.2
<u>Average Duration:</u>		13.7	36	14.7	1976.1	7.9	1975.1
<u>AWBA:</u>	\$240.78	\$236.08	42	\$240.78	2008.2	\$41.67	1971.1
As % of AWW:	35.7		32				
<u>Avg. Benefits per First Payment:</u>		\$3,129					

Financial Information	Past 12 Months	Rank
<u>State Revenues (000):</u>	\$287,867	28
<u>Total Wages (000)**:</u>	\$17,288,375	27
<u>Total Wages (Taxable Employers)(000)**:</u>	\$14,060,986	26
<u>Taxable Wages (000)**:</u>	\$1,278,789	33
<u>Avg. Weekly Wage**:</u>	\$673.97	42
<u>Avg. Tax Rate on Taxable Wages (%) **:</u>	2.15	20
<u>Avg. Tax Rate on Total Wages (%) **:</u>	0.52	32
<u>Calendar Yr Taxable Wage Base:</u>	\$7,000	49
<u>Trust Fund (TF) Balance (000):</u>		
(Including Loans):	\$182,893	44
<u>TF as % of Total Wages*:</u>	0.34	47
<u>Interest Earned (000):</u>	\$2,034	43
<u>Avg. High Cost Multiple +:</u>	0.26	46
<u>High Cost Multiple +:</u>	0.13	48

Labor Force	(Quarterly)	Past 12 Mos	Rank
<u>IUR (%):</u>	2.4	2.3	16
<u>TUR (%):</u>	6.0	6.0	12
<u>Total Unemp. (000):</u>	129.4	128.3	23
Insured Unemployed (000) ***			
<u>Regular Programs:</u>	45.7	43.4	19
<u>All Programs:</u>	45.7	43.4	19
Reciency Rates (%) ***			
<u>Regular Programs:</u>	35	34	24
<u>All Programs:</u>	35	34	24
<u>Covered Emp. (000)**:</u>	1,874	1,862	24
<u>Civ. Labor Force (000):</u>	2,159	2,141	24
<u>Subj. Employers (000):</u>	100	100	25

Extended Benefits	(Quarterly)	Past 12 Months
<u>Extended Benefits (000):</u>	\$0	\$0
EB First Payments:	0	0
EB Weeks Claimed:	0	0
EB Exhaustions:	0	0

Loans	Rank
<u>Outstanding Loan Bal (000):</u>	\$0 2
Loan per Cov Employee:	\$0 2
Loan as % of Total Wages*:	0 2

* Based on extrapolated wages for the most recent 12 months.

** Wages and Covered Employment lag the rest of the Data Summary information by six months

*** Regular programs include State UI, UCFE and UCX.

+ Refers to most recent calendar year. Fourth and first quarter issues publish measure based on extrapolated wages. Second and third quarter issues publish measure based on actual wages.

See glossary for data definitions

Note: Blank cells appearing in any section of this report indicates that information is unavailable.

UI Data Summary for South Dakota

CYQ: 2008.2

Benefits	(Quarterly)	Past 12 Months	Rank	High Value : Qtr		Low Value : Qtr	
Benefits Paid (000):	\$3,943	\$18,821	52	\$10,598	2003.1	\$448	1971.3
Initial Claims:	3,784	16,987	52	13,637	1978.4	2,200	1971.2
First Payments:	1,447	7,377	52	6,177	1979.1	1,008	2007.3
Weeks Claimed:	21,233	102,306	52	88,801	1979.1	16,839	1971.3
Wks Compensated:	17,182	82,479	52	66,277	1979.1	12,003	1971.3
Exhaustions:	251	827	53	1,370	1975.2	105	2000.3
Exhaustion Rate:		10.8%	53	33.5%	1975.2	7.3%	2000.4
Average Duration:		11.2	53	14.6	1983.3	9.8	2001.1
AWBA:	\$233.80	\$232.48	46	\$240.32	2008.1	\$39.50	1971.3
As % of AWW:	39.2		23				
Avg. Benefits per First Payment:		\$2,551					

Financial Information	Past 12 Months	Rank
State Revenues (000):	\$26,678	52
Total Wages (000)**:	\$3,167,400	49
Total Wages (Taxable Employers)(000)**:	\$2,480,874	49
Taxable Wages (000)**:	\$286,046	51
Avg. Weekly Wage**:	\$597.06	52
Avg. Tax Rate on Taxable Wages (%) **:	0.92	50
Avg. Tax Rate on Total Wages (%) **:	0.28	51
Calendar Yr Taxable Wage Base:	\$9,000	31
Trust Fund (TF) Balance (000):		
(Including Loans):	\$26,048	52
TF as % of Total Wages*:	0.27	48
Interest Earned (000):	\$289	51
Avg. High Cost Multiple +:	0.33	40
High Cost Multiple +:	0.25	39

Labor Force	(Quarterly)	Past 12 Mos	Rank
IUR (%):	0.4	0.5	53
TUR (%):	2.7	2.8	52
Total Unemp. (000):	12.1	12.5	51
Insured Unemployed (000) ***			
Regular Programs:	1.8	2.2	52
All Programs:	1.8	2.2	52
Reciency Rates (%) ***			
Regular Programs:	15	18	52
All Programs:	15	18	52
Covered Emp. (000)**:	384	381	48
Civ. Labor Force (000):	448	444	46
Subj. Employers (000):	25	25	48

Extended Benefits	(Quarterly)	Past 12 Months
Extended Benefits (000):	\$0	\$0
EB First Payments:	0	0
EB Weeks Claimed:	0	0
EB Exhaustions:	0	0

Loans	Rank
Outstanding Loan Bal (000):	\$0 2
Loan per Cov Employee:	\$0 2
Loan as % of Total Wages*:	0 2

* Based on extrapolated wages for the most recent 12 months.

** Wages and Covered Employment lag the rest of the Data Summary information by six months

*** Regular programs include State UI, UCFE and UCX.

+ Refers to most recent calendar year. Fourth and first quarter issues publish measure based on extrapolated wages. Second and third quarter issues publish measure based on actual wages.

See glossary for data definitions

Note: Blank cells appearing in any section of this report indicates that information is unavailable.

UI Data Summary for Tennessee

CYQ: 2008.2

Benefits	(Quarterly)	Past 12 Months	Rank	High Value : Qtr		Low Value : Qtr	
<u>Benefits Paid (000):</u>	\$118,836	\$459,528	21	\$193,223	2002.1	\$7,536	1972.4
<u>Initial Claims:</u>	78,699	321,066	20	279,757	1982.1	27,840	1973.2
<u>First Payments:</u>	37,777	152,119	16	121,148	1975.1	14,013	1972.4
<u>Weeks Claimed:</u>	575,553	2,254,212	19	1,526,707	1975.1	231,044	1972.4
<u>Wks Compensated:</u>	549,122	2,127,921	18	1,189,643	1975.1	170,977	1972.4
<u>Exhaustions:</u>	14,557	54,074	16	29,480	1975.2	4,037	1973.4
<u>Exhaustion Rate:</u>		37.8%	20	40.2%	2003.4	19.6%	1984.3
<u>Average Duration:</u>		14.0	31	16.6	1976.1	8.8	1990.4
<u>AWBA:</u>	\$219.83	\$221.11	47	\$224.57	2007.4	\$41.43	1971.1
As % of AWW:	29.6		43				
<u>Avg. Benefits per First Payment:</u>		\$3,021					

Financial Information	Past 12 Months	Rank
<u>State Revenues (000):</u>	\$405,120	21
<u>Total Wages (000)**:</u>	\$28,569,215	20
<u>Total Wages (Taxable Employers)(000)**:</u>	\$24,022,453	16
<u>Taxable Wages (000)**:</u>	\$1,913,493	27
<u>Avg. Weekly Wage**:</u>	\$743.42	27
<u>Avg. Tax Rate on Taxable Wages (%) **:</u>	1.84	27
<u>Avg. Tax Rate on Total Wages (%) **:</u>	0.40	41
<u>Calendar Yr Taxable Wage Base:</u>	\$7,000	49
<u>Trust Fund (TF) Balance (000):</u>		
(Including Loans):	\$619,344	23
<u>TF as % of Total Wages*:</u>	0.69	37
<u>Interest Earned (000):</u>	\$7,165	21
<u>Avg. High Cost Multiple +:</u>	0.48	33
<u>High Cost Multiple +:</u>	0.30	35

Labor Force	(Quarterly)	Past 12 Mos	Rank
<u>IUR (%):</u>	1.7	1.6	37
<u>TUR (%):</u>	5.9	5.3	13
<u>Total Unemp. (000):</u>	181.9	161.9	12
Insured Unemployed (000) ***			
<u>Regular Programs:</u>	45.6	44.7	20
<u>All Programs:</u>	45.6	44.7	20
Reciency Rates (%) ***			
<u>Regular Programs:</u>	25	28	44
<u>All Programs:</u>	25	28	44
<u>Covered Emp. (000)**:</u>	2,731	2,696	17
<u>Civ. Labor Force (000):</u>	3,057	3,052	18
<u>Subj. Employers (000):</u>	116	116	22

Extended Benefits	(Quarterly)	Past 12 Months
<u>Extended Benefits (000):</u>	\$0	\$0
EB First Payments:	0	0
EB Weeks Claimed:	0	0
EB Exhaustions:	0	0

Loans	Rank
<u>Outstanding Loan Bal (000):</u>	\$0 2
Loan per Cov Employee:	\$0 2
Loan as % of Total Wages*:	0 2

* Based on extrapolated wages for the most recent 12 months.

** Wages and Covered Employment lag the rest of the Data Summary information by six months

*** Regular programs include State UI, UCFE and UCX.

+ Refers to most recent calendar year. Fourth and first quarter issues publish measure based on extrapolated wages. Second and third quarter issues publish measure based on actual wages.

See glossary for data definitions

Note: Blank cells appearing in any section of this report indicates that information is unavailable.

UI Data Summary for Texas

CYQ: 2008.2

Benefits	(Quarterly)	Past 12 Months	Rank	High Value : Qtr		Low Value : Qtr	
<u>Benefits Paid (000):</u>	\$348,687	\$1,273,407	10	\$592,800	2002.1	\$15,273	1973.4
<u>Initial Claims:</u>	184,868	666,313	6	292,684	2001.4	59,692	1973.3
<u>First Payments:</u>	86,212	299,980	5	148,987	2001.4	24,909	1973.2
<u>Weeks Claimed:</u>	1,366,258	5,169,384	9	2,704,288	2002.1	377,514	1973.3
<u>Wks Compensated:</u>	1,180,761	4,444,787	9	2,360,139	2002.1	306,120	1973.4
<u>Exhaustions:</u>	29,951	113,199	8	112,555	2002.1	9,367	1973.4
<u>Exhaustion Rate:</u>		40.5%	16	67.2%	2002.1	29.7%	1982.2
<u>Average Duration:</u>		14.8	20	17.0	2004.2	10.7	1975.1
<u>AWBA:</u>	\$304.72	\$296.02	18	\$304.72	2008.2	\$40.91	1971.3
As % of AWW:	35.7		33				
<u>Avg. Benefits per First Payment:</u>		\$4,245					

Financial Information	Past 12 Months	Rank
<u>State Revenues (000):</u>	\$1,081,520	10
<u>Total Wages (000)**:</u>	\$120,322,873	3
<u>Total Wages (Taxable Employers)(000)**:</u>	\$102,837,717	2
<u>Taxable Wages (000)**:</u>	\$9,704,453	2
<u>Avg. Weekly Wage**:</u>	\$853.34	13
<u>Avg. Tax Rate on Taxable Wages (%) **:</u>	1.91	25
<u>Avg. Tax Rate on Total Wages (%) **:</u>	0.45	39
<u>Calendar Yr Taxable Wage Base:</u>	\$9,000	31
<u>Trust Fund (TF) Balance (000):</u>		
(Including Loans):	\$1,874,615	6
<u>TF as % of Total Wages*:</u>	0.47	43
<u>Interest Earned (000):</u>	\$22,946	5
<u>Avg. High Cost Multiple +:</u>	0.45	36
<u>High Cost Multiple +:</u>	0.41	30

Labor Force	(Quarterly)	Past 12 Mos	Rank
<u>IUR (%):</u>	1.1	1.0	46
<u>TUR (%):</u>	4.3	4.3	33
<u>Total Unemp. (000):</u>	506.3	501.8	2
<u>Insured Unemployed (000) ***</u>			
<u>Regular Programs:</u>	107.9	101.5	9
<u>All Programs:</u>	107.9	101.5	9
<u>Reciency Rates (%) ***</u>			
<u>Regular Programs:</u>	21	20	49
<u>All Programs:</u>	21	20	49
<u>Covered Emp. (000)**:</u>	10,230	10,047	2
<u>Civ. Labor Force (000):</u>	11,693	11,585	2
<u>Subj. Employers (000):</u>	447	444	4

Extended Benefits	(Quarterly)	Past 12 Months
<u>Extended Benefits (000):</u>	\$0	\$0
EB First Payments:	0	0
EB Weeks Claimed:	0	0
EB Exhaustions:	0	0

Loans	Rank
<u>Outstanding Loan Bal (000):</u>	\$0 2
Loan per Cov Employee:	\$0 2
Loan as % of Total Wages*:	0 2

* Based on extrapolated wages for the most recent 12 months.

** Wages and Covered Employment lag the rest of the Data Summary information by six months

*** Regular programs include State UI, UCFE and UCX.

+ Refers to most recent calendar year. Fourth and first quarter issues publish measure based on extrapolated wages. Second and third quarter issues publish measure based on actual wages.

See glossary for data definitions

Note: Blank cells appearing in any section of this report indicates that information is unavailable.

UI Data Summary for Utah

CYQ: 2008.2

Benefits	(Quarterly)	Past 12 Months	Rank	High Value : Qtr		Low Value : Qtr	
<u>Benefits Paid (000):</u>	\$37,910	\$135,318	39	\$79,889	2002.1	\$3,256	1973.3
<u>Initial Claims:</u>	18,692	72,961	40	38,001	1982.4	10,343	1973.2
<u>First Payments:</u>	7,801	33,308	43	20,398	2001.4	4,234	2006.3
<u>Weeks Claimed:</u>	147,654	539,845	42	398,806	1983.1	78,788	1973.3
<u>Wks Compensated:</u>	124,598	451,036	42	307,666	1983.1	60,361	1973.3
<u>Exhaustions:</u>	3,197	9,351	42	8,568	1983.1	1,303	1973.3
<u>Exhaustion Rate:</u>		35.6%	27	46.6%	1983.2	20.5%	1978.3
<u>Average Duration:</u>		13.5	38	16.6	1983.3	10.7	1996.3
<u>AWBA:</u>	\$310.96	\$306.42	13	\$311.83	2008.1	\$44.14	1971.2
As % of AWW:	44.4		5				
<u>Avg. Benefits per First Payment:</u>		\$4,063					

Financial Information	Past 12 Months	Rank
<u>State Revenues (000):</u>	\$166,066	36
<u>Total Wages (000)**:</u>	\$11,671,380	33
<u>Total Wages (Taxable Employers)(000)**:</u>	\$9,701,627	33
<u>Taxable Wages (000)**:</u>	\$3,079,513	23
<u>Avg. Weekly Wage**:</u>	\$700.86	37
<u>Avg. Tax Rate on Taxable Wages (%) **:</u>	0.90	51
<u>Avg. Tax Rate on Total Wages (%) **:</u>	0.52	33
<u>Calendar Yr Taxable Wage Base:</u>	\$26,700	6
<u>Trust Fund (TF) Balance (000):</u>		
(Including Loans):	\$847,903	14
<u>TF as % of Total Wages*:</u>	2.27	12
<u>Interest Earned (000):</u>	\$10,168	14
<u>Avg. High Cost Multiple +:</u>	1.47	7
<u>High Cost Multiple +:</u>	1.17	5

Labor Force	(Quarterly)	Past 12 Mos	Rank
<u>IUR (%):</u>	1.0	0.9	49
<u>TUR (%):</u>	3.1	3.0	50
<u>Total Unemp. (000):</u>	43.5	41.4	36
Insured Unemployed (000) ***			
<u>Regular Programs:</u>	11.6	10.8	42
<u>All Programs:</u>	11.6	10.8	42
Reciency Rates (%) ***			
<u>Regular Programs:</u>	27	26	43
<u>All Programs:</u>	27	26	43
<u>Covered Emp. (000)**:</u>	1,201	1,184	33
<u>Civ. Labor Force (000):</u>	1,382	1,381	34
<u>Subj. Employers (000):</u>	71	70	32

Extended Benefits	(Quarterly)	Past 12 Months
<u>Extended Benefits (000):</u>	\$0	\$0
EB First Payments:	0	0
EB Weeks Claimed:	0	0
EB Exhaustions:	0	0

Loans	Rank
<u>Outstanding Loan Bal (000):</u>	\$0 2
Loan per Cov Employee:	\$0 2
Loan as % of Total Wages*:	0 2

* Based on extrapolated wages for the most recent 12 months.

** Wages and Covered Employment lag the rest of the Data Summary information by six months

*** Regular programs include State UI, UCFE and UCX.

+ Refers to most recent calendar year. Fourth and first quarter issues publish measure based on extrapolated wages. Second and third quarter issues publish measure based on actual wages.

See glossary for data definitions

Note: Blank cells appearing in any section of this report indicates that information is unavailable.

UI Data Summary for **Vermont**

CYQ: 2008.2

Benefits	(Quarterly)	Past 12 Months	Rank	High Value : Qtr		Low Value : Qtr	
Benefits Paid (000):	\$26,821	\$98,327	46	\$37,231	2008.1	\$2,018	1973.3
Initial Claims:	12,146	47,120	47	21,356	1982.4	4,424	1988.3
First Payments:	5,621	23,765	46	11,432	1991.1	2,057	1988.3
Weeks Claimed:	100,109	378,224	47	172,983	1991.1	34,974	1988.3
Wks Compensated:	95,996	349,621	46	154,357	1991.1	29,653	1988.3
Exhaustions:	1,437	4,359	49	2,755	1975.3	400	1989.1
Exhaustion Rate:		19.0%	51	37.4%	1976.1	11.8%	2000.4
Average Duration:		14.7	23	19.1	1976.1	11.4	1989.4
AWBA:	\$289.76	\$291.16	26	\$299.97	2008.1	\$53.47	1971.1
As % of AWW:	41.3		12				
Avg. Benefits per First Payment:		\$4,137					

Financial Information	Past 12 Months	Rank
State Revenues (000):	\$63,583	48
Total Wages (000)**:	\$2,871,945	50
Total Wages (Taxable Employers)(000)**:	\$2,100,741	52
Taxable Wages (000)**:	\$191,388	52
Avg. Weekly Wage**:	\$702.28	36
Avg. Tax Rate on Taxable Wages (%) **:	2.87	9
Avg. Tax Rate on Total Wages (%) **:	0.74	20
Calendar Yr Taxable Wage Base:	\$8,000	41
Trust Fund (TF) Balance (000):		
(Including Loans):	\$160,643	47
TF as % of Total Wages*:	2.01	13
Interest Earned (000):	\$1,897	46
Avg. High Cost Multiple +:	1.20	10
High Cost Multiple +:	0.71	18

Labor Force	(Quarterly)	Past 12 Mos	Rank
IUR (%):	2.5	2.4	13
TUR (%):	4.8	4.2	30
Total Unemp. (000):	16.7	14.8	49
Insured Unemployed (000) ***			
Regular Programs:	7.5	7.1	48
All Programs:	7.5	7.1	48
Reciency Rates (%) ***			
Regular Programs:	45	48	9
All Programs:	45	48	9
Covered Emp. (000)**:	301	297	50
Civ. Labor Force (000):	352	353	50
Subj. Employers (000):	22	22	49

Extended Benefits	(Quarterly)	Past 12 Months
Extended Benefits (000):	\$0	\$0
EB First Payments:	0	0
EB Weeks Claimed:	0	0
EB Exhaustions:	0	0

Loans	Rank
Outstanding Loan Bal (000):	\$0 2
Loan per Cov Employee:	\$0 2
Loan as % of Total Wages*:	0 2

* Based on extrapolated wages for the most recent 12 months.

** Wages and Covered Employment lag the rest of the Data Summary information by six months

*** Regular programs include State UI, UCFE and UCX.

+ Refers to most recent calendar year. Fourth and first quarter issues publish measure based on extrapolated wages. Second and third quarter issues publish measure based on actual wages.

See glossary for data definitions

Note: Blank cells appearing in any section of this report indicates that information is unavailable.

UI Data Summary for Virgin Islands

CYQ: 2008.2

Benefits	(Quarterly)	Past 12 Months	Rank	High Value : Qtr		Low Value : Qtr	
				Value	Year	Value	Year
Benefits Paid (000):	\$2,993	\$11,468	53	\$21,838	2002.4	\$277	1988.1
Initial Claims:	984	3,427	53	3,877	1995.4	332	2000.1
First Payments:	517	2,085	53	3,838	1995.4	107	1978.1
Weeks Claimed:	10,494	40,074	53	25,858	1994.1	215	1974.3
Wks Compensated:	9,246	35,656	53	37,242	1995.4	2,660	1988.1
Exhaustions:	278	978	52	1,170	1994.2	51	1978.1
Exhaustion Rate:		48.8%	3	70.6%	2003.3	20.5%	1991.1
Average Duration:		17.1	6	41.3	1978.1	10.9	1991.1
AWBA:	\$333.17	\$332.80	9	\$338.13	2007.4	\$62.61	1978.4
As % of AWW:	48.3		2				
Avg. Benefits per First Payment:		\$5,500					

Financial Information	Past 12 Months	Rank
State Revenues (000):	\$1,532	53
Total Wages (000)**:	\$421,042	53
Total Wages (Taxable Employers)(000)**:	\$282,228	53
Taxable Wages (000)**:	\$91,292	53
Avg. Weekly Wage**:	\$690.14	39
Avg. Tax Rate on Taxable Wages (%) **:	0.20	53
Avg. Tax Rate on Total Wages (%) **:	0.11	53
Calendar Yr Taxable Wage Base:	\$21,800	12
Trust Fund (TF) Balance (000):		
(Including Loans):	\$17,869	53
TF as % of Total Wages*:	1.57	17
Interest Earned (000):	\$229	52
Avg. High Cost Multiple +:	0.80	25
High Cost Multiple +:	0.70	19

Labor Force	(Quarterly)	Past 12 Mos	Rank
IUR (%):	1.5	1.4	41
TUR (%):			
Total Unemp. (000):			
Insured Unemployed (000) ***			
Regular Programs:	0.7	0.6	53
All Programs:	0.7	0.6	53
Reciency Rates (%) ***			
Regular Programs:			
All Programs:			
Covered Emp. (000)**:	45	45	53
Civ. Labor Force (000):			
Subj. Employers (000):	4	4	53

Extended Benefits	(Quarterly)	Past 12 Months
Extended Benefits (000):	\$0	\$0
EB First Payments:	0	0
EB Weeks Claimed:	0	0
EB Exhaustions:	0	0

Loans	Rank
Outstanding Loan Bal (000):	\$0 2
Loan per Cov Employee:	\$0 2
Loan as % of Total Wages*:	0 2

* Based on extrapolated wages for the most recent 12 months.

** Wages and Covered Employment lag the rest of the Data Summary information by six months

*** Regular programs include State UI, UCFE and UCX.

+ Refers to most recent calendar year. Fourth and first quarter issues publish measure based on extrapolated wages. Second and third quarter issues publish measure based on actual wages.

See glossary for data definitions

Note: Blank cells appearing in any section of this report indicates that information is unavailable.

UI Data Summary for Virginia

CYQ: 2008.2

Benefits	(Quarterly)	Past 12 Months	Rank	High Value : Qtr		Low Value : Qtr	
<u>Benefits Paid (000):</u>	\$111,996	\$403,245	24	\$207,301	2002.1	\$2,738	1972.4
<u>Initial Claims:</u>	66,739	283,137	22	185,586	1991.1	16,939	1973.2
<u>First Payments:</u>	28,241	119,439	22	96,342	1975.1	5,286	1973.3
<u>Weeks Claimed:</u>	498,672	1,870,015	25	847,708	1975.1	83,251	1972.4
<u>Wks Compensated:</u>	410,142	1,504,599	26	759,236	1975.2	52,602	1972.4
<u>Exhaustions:</u>	11,514	39,038	21	18,990	2002.2	1,301	1972.4
<u>Exhaustion Rate:</u>		34.9%	29	42.9%	1975.2	14.3%	1990.3
<u>Average Duration:</u>		12.6	46	15.4	1976.1	7.5	1990.1
<u>AWBA:</u>	\$280.00	\$275.51	29	\$313.81	2002.2	\$45.63	1971.3
As % of AWW:	32.6		39				
<u>Avg. Benefits per First Payment:</u>		\$3,376					

Financial Information	Past 12 Months	Rank
<u>State Revenues (000):</u>	\$354,966	26
<u>Total Wages (000)**:</u>	\$41,258,184	12
<u>Total Wages (Taxable Employers)(000)**:</u>	\$34,840,148	12
<u>Taxable Wages (000)**:</u>	\$2,631,748	16
<u>Avg. Weekly Wage**:</u>	\$859.06	11
<u>Avg. Tax Rate on Taxable Wages (%) **:</u>	1.41	42
<u>Avg. Tax Rate on Total Wages (%) **:</u>	0.29	50
<u>Calendar Yr Taxable Wage Base:</u>	\$8,000	41
<u>Trust Fund (TF) Balance (000):</u>		
(Including Loans):	\$779,103	16
<u>TF as % of Total Wages*:</u>	0.57	38
<u>Interest Earned (000):</u>	\$9,318	15
<u>Avg. High Cost Multiple +:</u>	0.71	28
<u>High Cost Multiple +:</u>	0.45	26

Labor Force	(Quarterly)	Past 12 Mos	Rank
<u>IUR (%):</u>	1.1	1.0	45
<u>TUR (%):</u>	3.8	3.4	43
<u>Total Unemp. (000):</u>	155.3	140.7	17
Insured Unemployed (000) ***			
<u>Regular Programs:</u>	38.9	36.6	25
<u>All Programs:</u>	38.9	36.6	25
Reciency Rates (%) ***			
<u>Regular Programs:</u>	25	26	45
<u>All Programs:</u>	25	26	45
<u>Covered Emp. (000)**:</u>	3,539	3,516	12
<u>Civ. Labor Force (000):</u>	4,134	4,089	12
<u>Subj. Employers (000):</u>	190	188	13

Extended Benefits	(Quarterly)	Past 12 Months
<u>Extended Benefits (000):</u>	\$0	\$0
EB First Payments:	0	0
EB Weeks Claimed:	0	0
EB Exhaustions:	0	0

Loans	Rank
<u>Outstanding Loan Bal (000):</u>	\$0 2
Loan per Cov Employee:	\$0 2
Loan as % of Total Wages*:	0 2

* Based on extrapolated wages for the most recent 12 months.

** Wages and Covered Employment lag the rest of the Data Summary information by six months

*** Regular programs include State UI, UCFE and UCX.

+ Refers to most recent calendar year. Fourth and first quarter issues publish measure based on extrapolated wages. Second and third quarter issues publish measure based on actual wages.

See glossary for data definitions

Note: Blank cells appearing in any section of this report indicates that information is unavailable.

UI Data Summary for Washington

CYQ: 2008.2

Benefits	(Quarterly)	Past 12 Months	Rank	High Value : Qtr		Low Value : Qtr	
Benefits Paid (000):	\$221,084	\$808,883	13	\$502,782	2002.1	\$28,236	1972.3
Initial Claims:	109,020	447,345	14	206,872	2001.4	76,810	1979.2
First Payments:	43,055	187,139	15	89,272	2001.4	26,788	1979.2
Weeks Claimed:	751,617	2,848,649	15	1,756,873	2002.1	459,778	1979.3
Wks Compensated:	662,012	2,464,487	15	1,646,496	2002.1	353,807	1979.3
Exhaustions:	11,253	36,078	22	30,315	1971.1	5,488	1979.3
Exhaustion Rate:		21.4%	50	41.5%	1976.1	19.2%	1980.1
Average Duration:		13.2	42	19.5	2002.4	12.4	1979.4
AWBA:	\$351.54	\$344.77	5	\$351.54	2008.2	\$57.77	1972.3
As % of AWW:	41.0		14				
Avg. Benefits per First Payment:		\$4,322					

Financial Information	Past 12 Months	Rank
State Revenues (000):	\$1,156,175	8
Total Wages (000)**:	\$32,894,890	14
Total Wages (Taxable Employers)(000)**:	\$26,128,529	14
Taxable Wages (000)**:	\$8,418,677	7
Avg. Weekly Wage**:	\$858.14	12
Avg. Tax Rate on Taxable Wages (%) **:	1.97	23
Avg. Tax Rate on Total Wages (%) **:	1.12	4
Calendar Yr Taxable Wage Base:	\$34,000	1
Trust Fund (TF) Balance (000):		
(Including Loans):	\$4,000,453	1
TF as % of Total Wages*:	3.78	2
Interest Earned (000):	\$47,372	1
Avg. High Cost Multiple +:	1.53	5
High Cost Multiple +:	0.98	8

Labor Force	(Quarterly)	Past 12 Mos	Rank
IUR (%):	2.0	1.9	23
TUR (%):	5.0	4.7	26
Total Unemp. (000):	172.4	163.2	13
Insured Unemployed (000) ***			
Regular Programs:	59.0	55.9	15
All Programs:	59.0	55.9	15
Reciency Rates (%) ***			
Regular Programs:	34	34	28
All Programs:	34	34	28
Covered Emp. (000)**:	2,887	2,857	15
Civ. Labor Force (000):	3,448	3,445	13
Subj. Employers (000):	199	200	12

Extended Benefits	(Quarterly)	Past 12 Months
Extended Benefits (000):	\$0	\$2
EB First Payments:	0	2
EB Weeks Claimed:	0	0
EB Exhaustions:	0	2

Loans	Rank	
Outstanding Loan Bal (000):	\$0	2
Loan per Cov Employee:	\$0	2
Loan as % of Total Wages*:	0	2

* Based on extrapolated wages for the most recent 12 months.

** Wages and Covered Employment lag the rest of the Data Summary information by six months

*** Regular programs include State UI, UCFE and UCX.

+ Refers to most recent calendar year. Fourth and first quarter issues publish measure based on extrapolated wages. Second and third quarter issues publish measure based on actual wages.

See glossary for data definitions

Note: Blank cells appearing in any section of this report indicates that information is unavailable.

UI Data Summary for West Virginia

CYQ: 2008.2

Benefits	(Quarterly)	Past 12 Months	Rank	High Value : Qtr		Low Value : Qtr	
Benefits Paid (000):	\$34,246	\$140,553	41	\$98,566	1983.1	\$3,940	1971.3
Initial Claims:	13,918	67,930	46	70,987	1977.1	13,253	2006.2
First Payments:	8,363	43,676	40	53,519	1977.1	7,534	2004.3
Weeks Claimed:	164,687	684,587	40	798,811	1983.1	136,981	1973.3
Wks Compensated:	147,104	599,371	39	723,321	1983.1	106,340	1973.3
Exhaustions:	2,516	9,730	43	14,289	1983.2	1,743	1971.2
Exhaustion Rate:		22.5%	48	42.1%	1983.3	12.3%	1979.1
Average Duration:		13.7	35	21.7	1983.4	9.3	1977.4
AWBA:	\$240.30	\$243.12	44	\$246.24	2008.1	\$36.07	1971.1
As % of AWW:	37.6		26				
Avg. Benefits per First Payment:		\$3,218					

Financial Information	Past 12 Months	Rank
State Revenues (000):	\$140,869	38
Total Wages (000)**:	\$5,994,008	42
Total Wages (Taxable Employers)(000)**:	\$4,647,574	42
Taxable Wages (000)**:	\$496,437	45
Avg. Weekly Wage**:	\$638.44	47
Avg. Tax Rate on Taxable Wages (%) **:	2.76	10
Avg. Tax Rate on Total Wages (%) **:	0.77	17
Calendar Yr Taxable Wage Base:	\$8,000	41
Trust Fund (TF) Balance (000):		
(Including Loans):	\$251,965	38
TF as % of Total Wages*:	1.41	21
Interest Earned (000):	\$2,907	39
Avg. High Cost Multiple +:	0.45	36
High Cost Multiple +:	0.35	32

Labor Force	(Quarterly)	Past 12 Mos	Rank
IUR (%):	1.9	2.0	28
TUR (%):	5.2	4.8	19
Total Unemp. (000):	42.9	39.1	37
Insured Unemployed (000) ***			
Regular Programs:	13.4	14.0	38
All Programs:	13.4	14.0	38
Reciency Rates (%) ***			
Regular Programs:	31	36	33
All Programs:	31	36	33
Covered Emp. (000)**:	691	684	39
Civ. Labor Force (000):	821	812	39
Subj. Employers (000):	36	37	43

Extended Benefits	(Quarterly)	Past 12 Months
Extended Benefits (000):	\$0	\$0
EB First Payments:	0	0
EB Weeks Claimed:	0	0
EB Exhaustions:	0	0

Loans	Rank
Outstanding Loan Bal (000):	\$0 2
Loan per Cov Employee:	\$0 2
Loan as % of Total Wages*:	0 2

* Based on extrapolated wages for the most recent 12 months.

** Wages and Covered Employment lag the rest of the Data Summary information by six months

*** Regular programs include State UI, UCFE and UCX.

+ Refers to most recent calendar year. Fourth and first quarter issues publish measure based on extrapolated wages. Second and third quarter issues publish measure based on actual wages.

See glossary for data definitions

Note: Blank cells appearing in any section of this report indicates that information is unavailable.

UI Data Summary for Wisconsin

CYQ: 2008.2

Benefits	(Quarterly)	Past 12 Months	Rank	High Value : Qtr		Low Value : Qtr	
Benefits Paid (000):	\$223,918	\$928,180	12	\$355,320	2002.1	\$13,881	1973.3
Initial Claims:	153,446	666,582	10	244,850	2001.4	40,405	1973.2
First Payments:	56,476	278,180	12	120,308	2002.1	15,946	1973.2
Weeks Claimed:	968,337	4,035,034	12	1,801,296	1983.1	291,967	1973.3
Wks Compensated:	905,212	3,766,136	12	1,600,491	1983.1	221,033	1973.3
Exhaustions:	20,368	70,868	14	35,071	1982.2	3,847	1973.3
Exhaustion Rate:		25.3%	46	39.7%	1982.4	14.8%	2000.4
Average Duration:		13.5	39	17.8	1976.1	10.9	2001.1
AWBA:	\$273.20	\$270.33	33	\$278.89	2008.1	\$56.98	1971.3
As % of AWW:	37.5		27				
Avg. Benefits per First Payment:		\$3,337					

Financial Information	Past 12 Months	Rank
State Revenues (000):	\$676,456	15
Total Wages (000)**:	\$27,698,692	19
Total Wages (Taxable Employers)(000)**:	\$21,977,638	22
Taxable Wages (000)**:	\$2,181,881	19
Avg. Weekly Wage**:	\$728.49	31
Avg. Tax Rate on Taxable Wages (%) **:	2.69	12
Avg. Tax Rate on Total Wages (%) **:	0.79	13
Calendar Yr Taxable Wage Base:	\$10,500	25
Trust Fund (TF) Balance (000):		
(Including Loans):	\$461,292	31
TF as % of Total Wages*:	0.55	39
Interest Earned (000):	\$5,271	30
Avg. High Cost Multiple +:	0.29	44
High Cost Multiple +:	0.23	42

Labor Force	(Quarterly)	Past 12 Mos	Rank
IUR (%):	2.7	2.8	10
TUR (%):	4.5	4.8	32
Total Unemp. (000):	139.3	147.6	20
Insured Unemployed (000) ***			
Regular Programs:	75.0	78.1	12
All Programs:	75.0	78.1	12
Reciency Rates (%) ***			
Regular Programs:	54	53	2
All Programs:	54	53	2
Covered Emp. (000)**:	2,780	2,752	16
Civ. Labor Force (000):	3,092	3,089	16
Subj. Employers (000):	132	131	20

Extended Benefits	(Quarterly)	Past 12 Months
Extended Benefits (000):	\$0	\$0
EB First Payments:	0	0
EB Weeks Claimed:	0	0
EB Exhaustions:	0	0

Loans	Rank
Outstanding Loan Bal (000):	\$0 2
Loan per Cov Employee:	\$0 2
Loan as % of Total Wages*:	0 2

* Based on extrapolated wages for the most recent 12 months.

** Wages and Covered Employment lag the rest of the Data Summary information by six months

*** Regular programs include State UI, UCFE and UCX.

+ Refers to most recent calendar year. Fourth and first quarter issues publish measure based on extrapolated wages. Second and third quarter issues publish measure based on actual wages.

See glossary for data definitions

Note: Blank cells appearing in any section of this report indicates that information is unavailable.

UI Data Summary for Wyoming

CYQ: 2008.2

Benefits	(Quarterly)	Past 12 Months	Rank	High Value : Qtr		Low Value : Qtr	
Benefits Paid (000):	\$10,742	\$39,222	50	\$25,268	1983.1	\$282	1974.3
Initial Claims:	4,950	21,953	50	15,650	1983.1	1,089	1973.3
First Payments:	2,342	10,302	50	10,956	1983.1	440	1974.3
Weeks Claimed:	36,538	147,272	50	172,109	1983.1	7,676	1974.3
Wks Compensated:	35,365	134,067	50	180,987	1983.1	5,338	1974.3
Exhaustions:	939	2,964	51	5,042	1983.2	137	1974.4
Exhaustion Rate:		30.8%	41	50.1%	1983.2	17.1%	1979.4
Average Duration:		13.0	44	19.7	1987.3	9.6	1976.3
AWBA:	\$308.31	\$296.75	14	\$308.31	2008.2	\$47.47	1971.3
As % of AWW:	41.3		11				
Avg. Benefits per First Payment:		\$3,807					

Financial Information	Past 12 Months	Rank
State Revenues (000):	\$55,736	49
Total Wages (000)**:	\$2,873,345	52
Total Wages (Taxable Employers)(000)**:	\$2,301,424	50
Taxable Wages (000)**:	\$526,622	49
Avg. Weekly Wage**:	\$746.49	26
Avg. Tax Rate on Taxable Wages (%) **:	1.42	40
Avg. Tax Rate on Total Wages (%) **:	0.66	26
Calendar Yr Taxable Wage Base:	\$20,100	13
Trust Fund (TF) Balance (000):		
(Including Loans):	\$250,474	39
TF as % of Total Wages*:	2.87	7
Interest Earned (000):	\$2,970	38
Avg. High Cost Multiple +:	1.15	13
High Cost Multiple +:	0.97	9

Labor Force	(Quarterly)	Past 12 Mos	Rank
IUR (%):	0.9	0.9	51
TUR (%):	2.9	3.0	51
Total Unemp. (000):	8.4	8.6	52
Insured Unemployed (000) ***			
Regular Programs:	2.6	2.6	50
All Programs:	2.6	2.6	50
Reciency Rates (%) ***			
Regular Programs:	31	30	35
All Programs:	31	30	35
Covered Emp. (000)**:	274	270	52
Civ. Labor Force (000):	291	290	52
Subj. Employers (000):	22	22	50

Extended Benefits	(Quarterly)	Past 12 Months
Extended Benefits (000):	\$0	\$0
EB First Payments:	0	0
EB Weeks Claimed:	0	0
EB Exhaustions:	0	0

Loans	Rank
Outstanding Loan Bal (000):	\$0 2
Loan per Cov Employee:	\$0 2
Loan as % of Total Wages*:	0 2

* Based on extrapolated wages for the most recent 12 months.

** Wages and Covered Employment lag the rest of the Data Summary information by six months

*** Regular programs include State UI, UCFE and UCX.

+ Refers to most recent calendar year. Fourth and first quarter issues publish measure based on extrapolated wages. Second and third quarter issues publish measure based on actual wages.

See glossary for data definitions

Note: Blank cells appearing in any section of this report indicates that information is unavailable.

UI Data Summary for **United States**

CYQ: 2008.2

Benefits	(Quarterly)		Past 12 Months		High Value : Qtr		Low Value : Qtr	
Benefits Paid (000):	\$9,539,046		\$35,796,484		\$12,080,573	2002.1	\$860,035	1973.3
Initial Claims:	4,513,350		18,110,613		8,229,191	1975.1	2,671,661	1973.2
First Payments:	1,928,357		8,242,442		4,663,186	1975.1	1,074,462	1973.2
Weeks Claimed:	37,869,922		145,468,038		62,573,667	1975.1	18,445,892	1973.3
Wks Compensated:	33,186,456		126,009,129		54,739,150	1983.1	15,351,045	1973.3
Exhaustions:	802,122		2,849,354		1,285,185	1983.1	332,910	1973.4
Exhaustion Rate:			37.3%		43.7%	2003.3	25.8%	1979.2
Average Duration:			15.3		17.5	1983.3	12.4	1975.1
AWBA:	\$296.69		\$293.14		\$299.14	2008.1	\$52.64	1971.3
As % of AWW:	35.2							
Avg. Benefits Per First Payment:			\$4,343					

Financial Information	Past 12 Months	
State Revenues (000):		\$32,686,081
Total Wages (000)**:	\$1,557,722,490	\$5,866,670,505
Total Wages (Taxable Employers) (000)**:	\$1,272,159,829	\$4,770,245,645
Taxable Wages (000)**:	\$145,367,839	\$1,298,274,360
Avg. Weekly Wage**:		\$843.91
Avg. Tax Rate on Taxable Wages (%) **:		2.42
Avg. Tax Rate on Total Wages (%) **:		0.66
Avg. State CY Taxable Wage Base:		\$11,565
Trust Fund (TF) Balance (000):		
(Including Loans):	\$39,705,150	
TF as % of Total Wages*:	0.81	
Interest Earned (000):	\$453,437	
Avg. High Cost Multiple +:	0.52	
High Cost Multiple +:	0.36	

Labor Force	(Quarterly)	Past 12 Months
IUR (%) (NSA)	2.2	2.1
TUR (%) (NSA)	5.2	4.9
Total Unemployed (000):	8,099	7,596
Insured Unemployed (000) ***		
Regular Programs:	2,934.7	2,822.6
All Programs:	2,935.1	2,822.7
Reciency Rates (%) ***		
Regular Programs:	36	37
All Programs:	36	37
Cov. Employ. (000)**:	135,155	133,688
Civ. Labor Force (000):	154,264	155,695
Subject Employers (000):	7,685	7,668

Extended Benefits	(Quarterly)	Past 12 Months
Extended Benefits (000):	\$705	\$712
EB First Payments:	1,481	1,494
EB Weeks Claimed:	6,160	6,176
EB Exhaustions:	0	2

Loans	
Outstanding Loan Bal (000):	\$177,000
Loan per Cov Employee:	\$1.32
Loan as % of Total Wages*:	0.0036

* Based on extrapolated wages for the most recent 12 months.

** Wages and Covered Employment lag the rest of the Data Summary information by six months.

*** Regular programs include State UI, UCFE and UCX.

+ Refers to most recent calendar year. Fourth and first quarter issues publish measure based on extrapolated wages. Second and third quarter issues publish measure based on actual wages.

See glossary for data definitions

DATA DEFINITIONS

[Back to Data Summary Home](#)

[Back to State Selection Page](#)

AVERAGE BENEFITS PER FIRST PAYMENT

Benefits Paid for all weeks compensated divided by the number of first payments.

AVERAGE DURATION

The number of weeks compensated for the year divided by the number of first payments. (ETA 5159)

AVERAGE HIGH COST RATE

The average of the three highest calendar year benefit cost rates in the last 20 years (or a period including three recessions, if longer). Benefit cost rates are benefits paid (including the state's share of extended benefits but excluding reimbursable benefits) as a percent of total wages in taxable employment.

AVERAGE HIGH COST MULTIPLE (AHCM)

Calendar Year Reserve Ratio (or "TF as % of Total Wages"); divided by the Average High Cost Rate.

AVERAGE TAX RATE (Taxable Wages)

Total employer contributions for a 12 month period divided by the total taxable wages for the same time period. (ES 202)

AVERAGE TAX RATE (Total Wages)

Total employer contributions for a 12 month period divided by the total wages paid by taxable employers for the same time period. (ES 202)

AVERAGE WEEKLY BENEFIT AMOUNT (AWBA)

Benefits Paid for Total Unemployment divided by Weeks Compensated for Total Unemployment. (ETA 5159)

AVERAGE WEEKLY WAGE

Total wages divided by covered employment, divided by 52 weeks. (ES 202)

BENEFITS PAID

The Unemployment benefits paid to individuals under a state program, usually the first 26 weeks of benefits, for all weeks compensated including partial payments. (ETA 5159)

CIVILIAN LABOR FORCE

The average number of individuals who are either employed or unemployed in the week of the 12th for the three months of the quarter. (Bureau of Labor Statistics)

COVERED EMPLOYMENT

The number of employees covered by Unemployment Insurance reported to the states by employers. (ETA 202)

EXHAUSTIONS

Number of claimants drawing the final payment of their original entitlement for a given program. (ETA 5159)

DATA DEFINITIONS

[Back to Data Summary Home](#)

[Back to State Selection Page](#)

EXHAUSTION RATE

A rate computed by dividing the average monthly exhaustions by the average monthly first payments. To allow for the normal flow of claimants through the program, the numerator lags the denominator by 26 weeks, e.g., the exhaustion rate for CY 1995.3 is computed by dividing the average monthly exhaustions for the twelve months ending September 1995, by the average monthly first payments for the twelve months ending March 1995.

EXTENDED BENEFITS

The supplemental program that pays extended compensation during periods of specified high unemployment in a state to individuals for weeks of unemployment after exhaustion of regular UI benefits. One-half of EB is funded by the state trust fund. (ETA 5159)

FIRST PAYMENTS

The first payment in a benefit year for a week of unemployment claimed under a specific program. This is used as a proxy for "beneficiaries" under a specific program. (ETA 5159)

HIGH-COST MULTIPLE (HCM)

"TF as % of Total Wages" divided by the High Cost Rate. The High Cost Rate is the highest historical ratio of benefits to wages for a 12-month period.

HIGHEST/LOWEST QUARTER

The value displayed represents the quarter with the highest or lowest value beginning with the January through March quarter of 1971 (CY 1971.1). Exhaustion rate and average duration are for 4-quarter periods, ending with the quarter shown.

INITIAL CLAIMS

Any notice of unemployment filed (1) to request a determination of entitlement to and eligibility for compensation or (2) to begin a second or subsequent period of eligibility within a benefit year or period of eligibility. Interstate claims are counted in the paying state. (ETA 5159)

INSURED UNEMPLOYED

The average weekly number of weeks claimed for the three months of the quarter. (ETA 5159)

INSURED UNEMPLOYMENT RATE (IUR)

The rate computed by dividing Insured Unemployed for the current quarter by Covered Employment for the first four of the last six completed quarters. (ETA 539)

INTEREST EARNED

The amount of interest earned on the Unemployment Trust Fund account. (unpublished US Treasury reports)

DATA DEFINITIONS

[Back to Data Summary Home](#)

[Back to State Selection Page](#)

OUTSTANDING LOAN BALANCE	Balance, as of the end of the quarter, of advances acquired by the state under Title XII of the Social Security Act. (unpublished US Treasury reports)
RANK	All rankings are from highest to lowest for a particular item. Ties receive the same rank.
RECIPIENCY RATE	The insured unemployed in regular programs as a percent of total unemployed.
STATE REVENUE	Funds deposited in state accounts in the Unemployment Trust Fund (UTF). These revenues are used to pay state UI benefits and the state share of EB. (ETA 2112)
SUBJECT EMPLOYERS	The number of employers subject to UI taxes. (ETA 581)
TAX YEAR	The twelve-month time period in which a state's tax rate schedules and taxable wage base remain constant. This is equivalent to the calendar year for most states, with the exception of NH, NJ, TN, and VT. These 4 states have July-June tax years.
TAXABLE WAGES	Wages paid to covered employees that are subject to State Unemployment Insurance taxes. (ES 202)
TAXABLE WAGE BASE	For each State, the maximum amount of wages paid to an employee by an employer during a tax year which are subject to UI taxes. Wages above this amount are not subject to tax. Note: The taxable wage bases published in this report are current as of the date of issue. Therefore, they do not match the time period of the taxable wages and average tax rate on taxable wages.
TF AS % OF TOTAL WAGES	Trust fund balance as a percent of estimated wages for the most recent 12 months. Also referred to as the Reserve Ratio. Estimated wages are based on the latest growth rate in the 12 month moving average (MA). <i>Example for 1997.4: Growth rate = ((MA1997.2-MA1996.4)/MA1996.4); MA1997.4=MA1997.2*growth rate)</i>
TOTAL UNEMPLOYED	The average number of individuals, 16 years of age or older, who do not have a job but are available for work and actively seeking work in the week of the 12th for the three months of the quarter. This includes individuals on layoff and waiting to report to a new job within 30 days. (Bureau of Labor Statistics-Not Seasonally Adjusted)

DATA DEFINITIONS

[Back to Data Summary Home](#)

[Back to State Selection Page](#)

TOTAL UNEMPLOYMENT RATE (TUR)

The rate computed by dividing Total Unemployed by the Civilian Labor Force. (Bureau of Labor Statistics)

TOTAL WAGES

All wages or remuneration paid to workers on all payrolls covered by Unemployment Insurance. (ES 202)

TOTAL WAGES (Taxable Employers)

All wages or remuneration paid to workers by all taxable employers. (ES 202)

TRUST FUND BALANCE (TF)

The balance in the individual state account in the Unemployment Trust Fund. (unpublished US Treasury reports)

UCFE

Unemployment Compensation for Federal Civilian Employees

UCX

Unemployment Compensation for Ex-Service Members

UNEMPLOYMENT TRUST FUND (UTF)

A fund established in the Treasury of United States which contains all monies deposited by state agencies to the credit of their unemployment fund accounts and Federal unemployment taxes collected by the Internal Revenue Service.

WEEKS CLAIMED

The number of weeks of benefits claimed, including weeks for which a waiting period or fixed disqualification period is being served. Interstate claims are counted in the paying state. (ETA 5159)

WEEKS COMPENSATED

The number of weeks claimed for which UI benefits are paid. Weeks compensated for partial unemployment are included. Interstate claims are counted in the paying state. (ETA 5159)